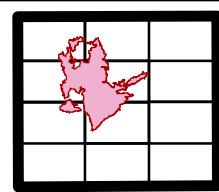




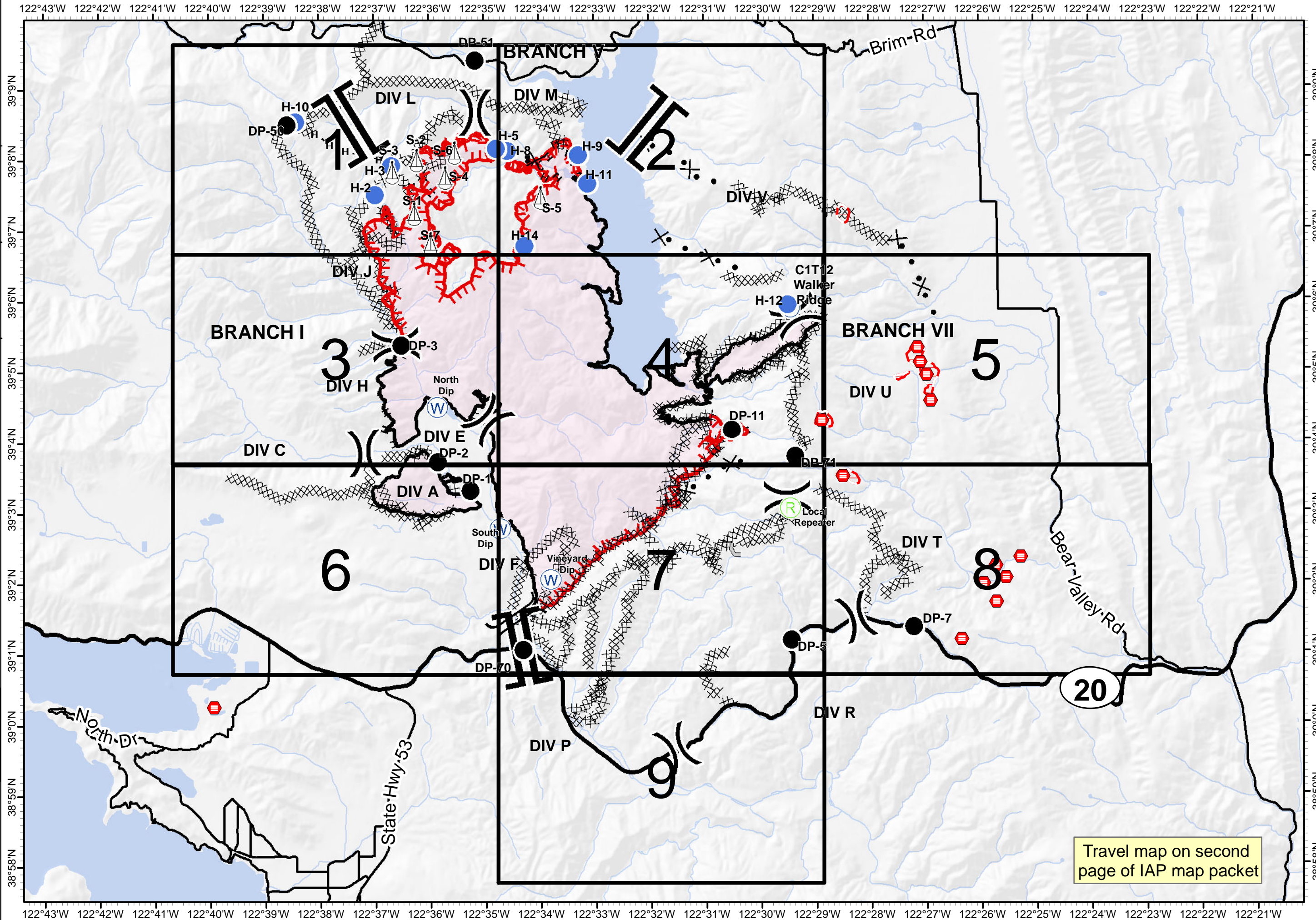
Pawnee Incident  
CA-LNU-009002  
June 30, 2018  
0700-0700

IAP  
Map  
Page 0

- Branch Break
- Division Break
- Drop Point
- Helispot
- Repeater
- Local Repeater
- Sling Site
- Water Source
- Bridge
- Uncontrolled Fire Edge
- Completed Line
- Completed Dozer Line
- Completed Hand Line
- Access or Improved Road
- Proposed Dozer Line
- Life Hazard
- Life Hazard Zone



1:90,000  
Team 3 GIS  
NAD 83





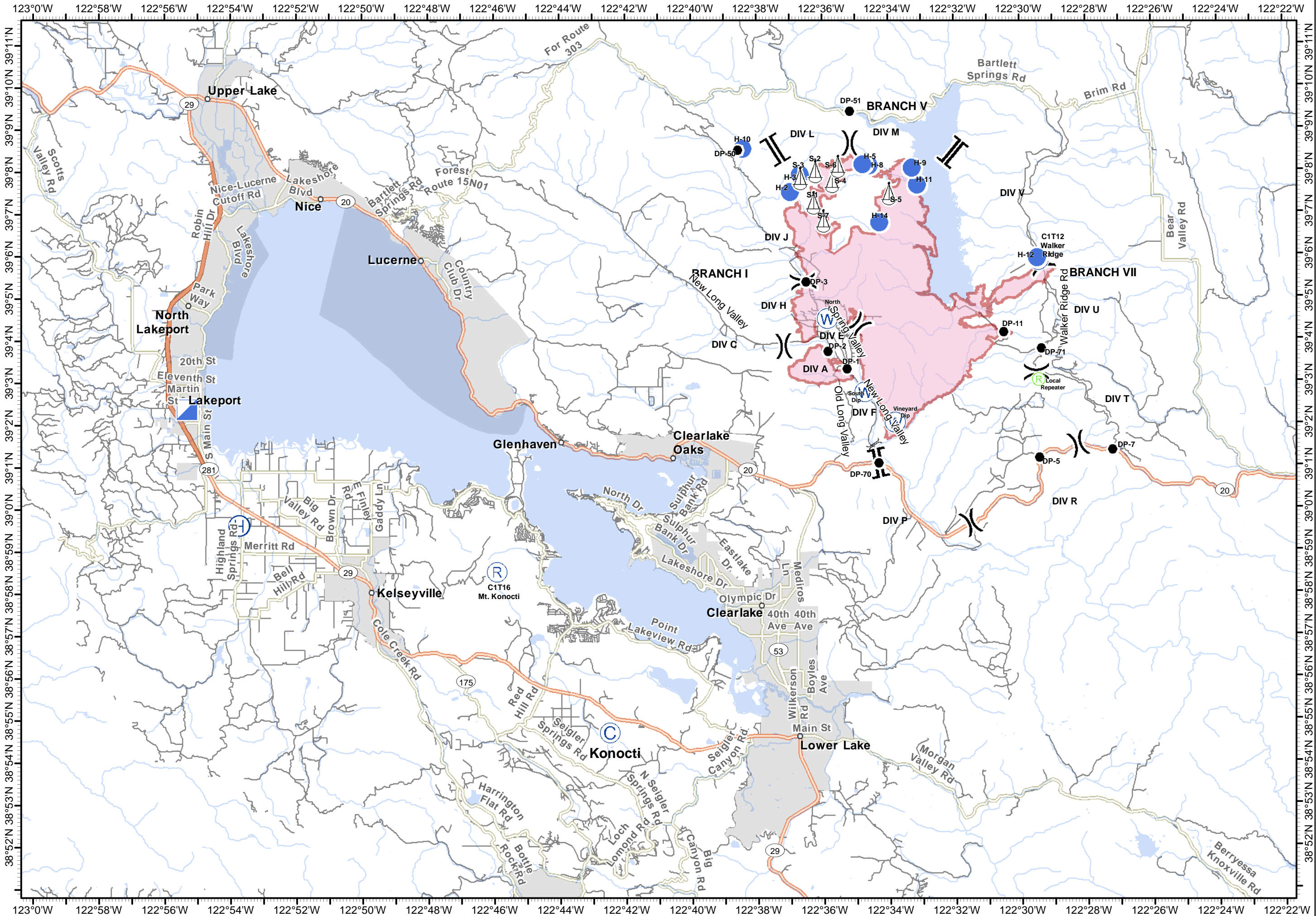
Pawnee Incident  
CA-LNU-009002  
June 30, 2018  
0700 - 0700

# Travel Map

- Camp
- Drop Point
- Helibase
- Helispot
- Incident Command Post
- Repeater
- Sling Site
- Water Source
- Unknown
- Fuel
- Division Break
- Branch Break
- Wildfire Daily Fire Perimeter



1:150,000  
Team 3 GIS  
NAD 83

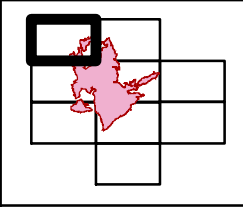




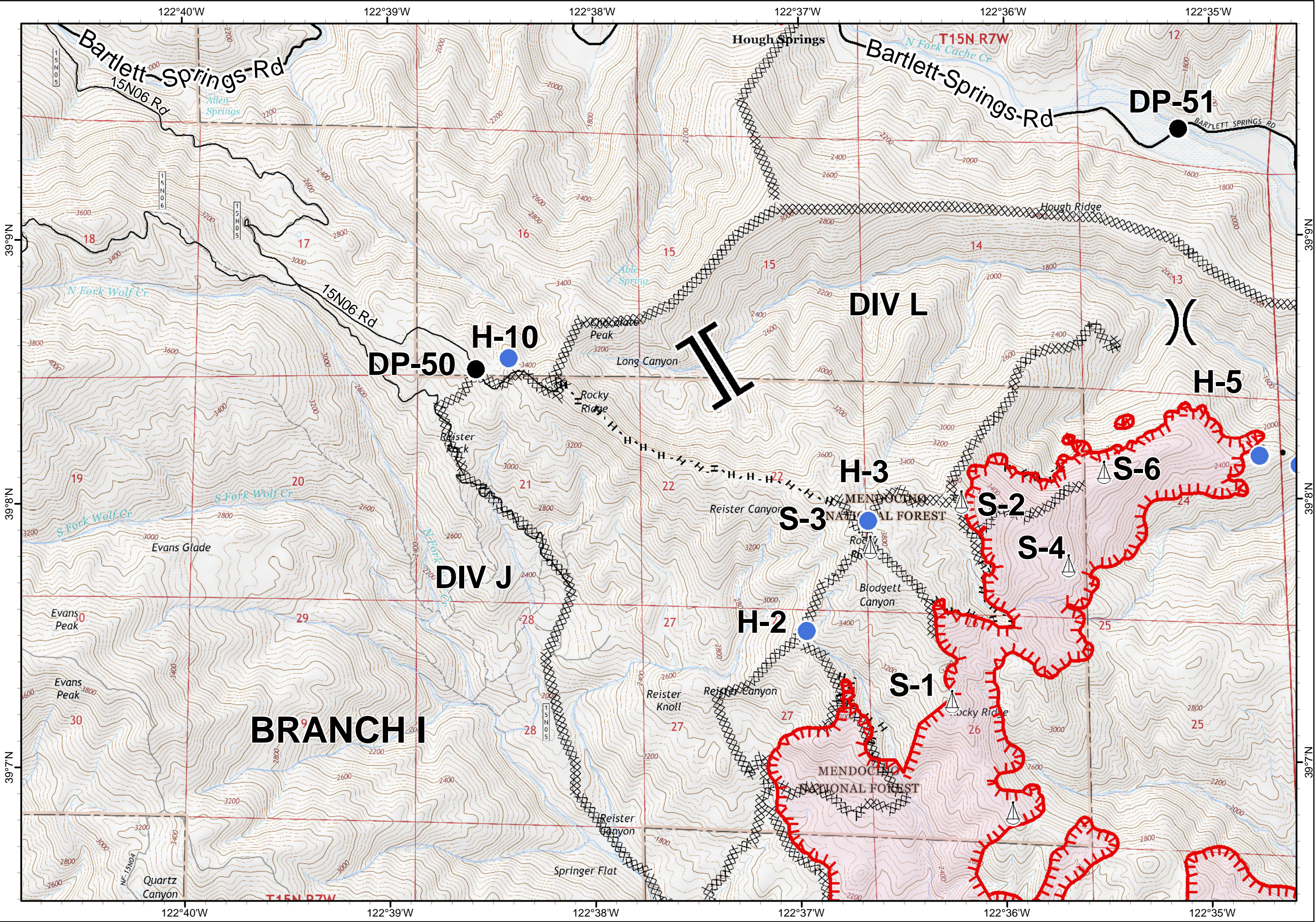
Pawnee Incident  
CA-LNU-009002  
June 30, 2018  
0700-0700

IAP  
Map  
Page 1

- Branch Break
- Division Break
- Drop Point
- Helispot
- Sling Site
- Uncontrolled Fire Edge
- Completed Dozer Line
- Completed Hand Line
- Proposed Dozer Line



1:24,000  
Team 3 GIS  
NAD 83

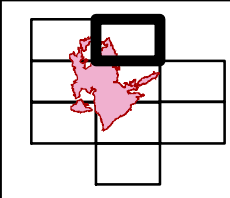




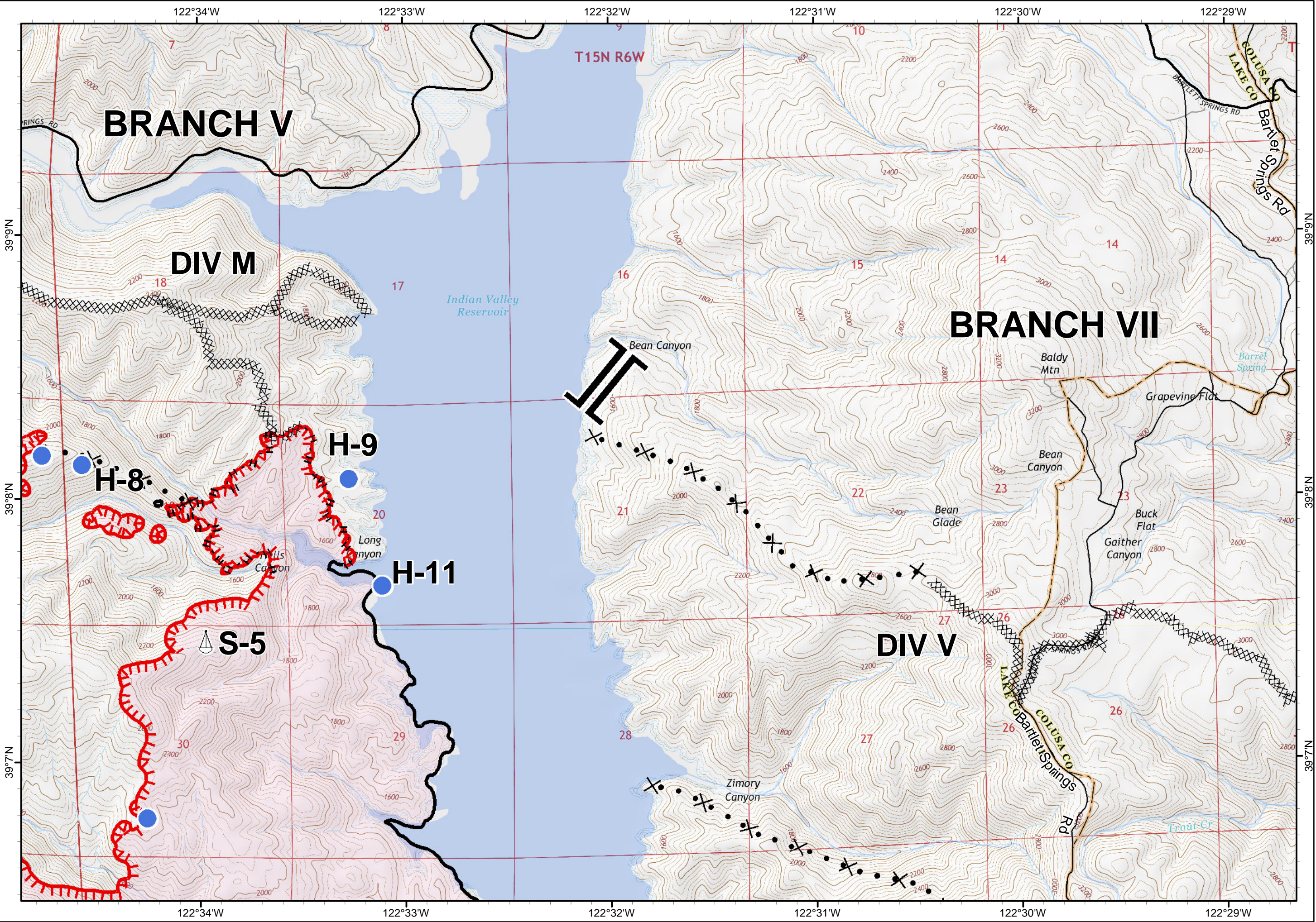
Pawnee Incident  
CA-LNU-009002  
June 30, 2018  
0700-0700

IAP  
Map  
Page 2

- Branch Break
- Helispot
- Sling Site
- Uncontrolled Fire Edge
- Completed Line
- Completed Dozer Line
- Completed Hand Line
- Proposed Dozer Line



1:24,000  
Team 3 GIS  
NAD 83

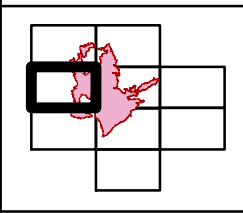




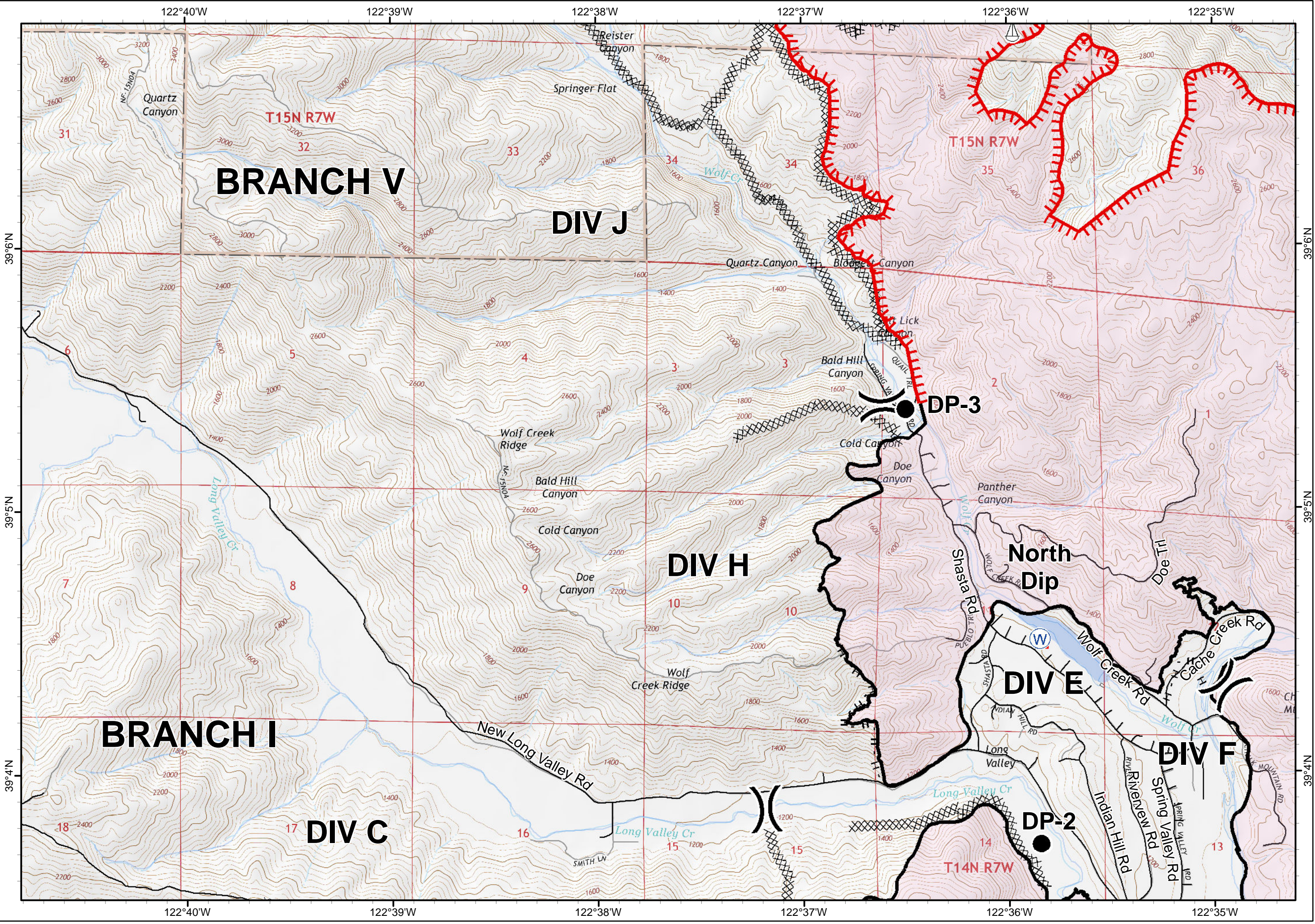
Pawnee Incident  
CA-LNU-009002  
June 30, 2018  
0700-0700

IAP  
Map  
Page 3

- Division Break
- Drop Point
- Sling Site
- Water Source
- Uncontrolled Fire Edge
- Completed Line
- Completed Dozer Line
- Completed Hand Line



1:24,000  
Team 3 GIS  
NAD 83

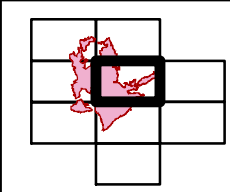




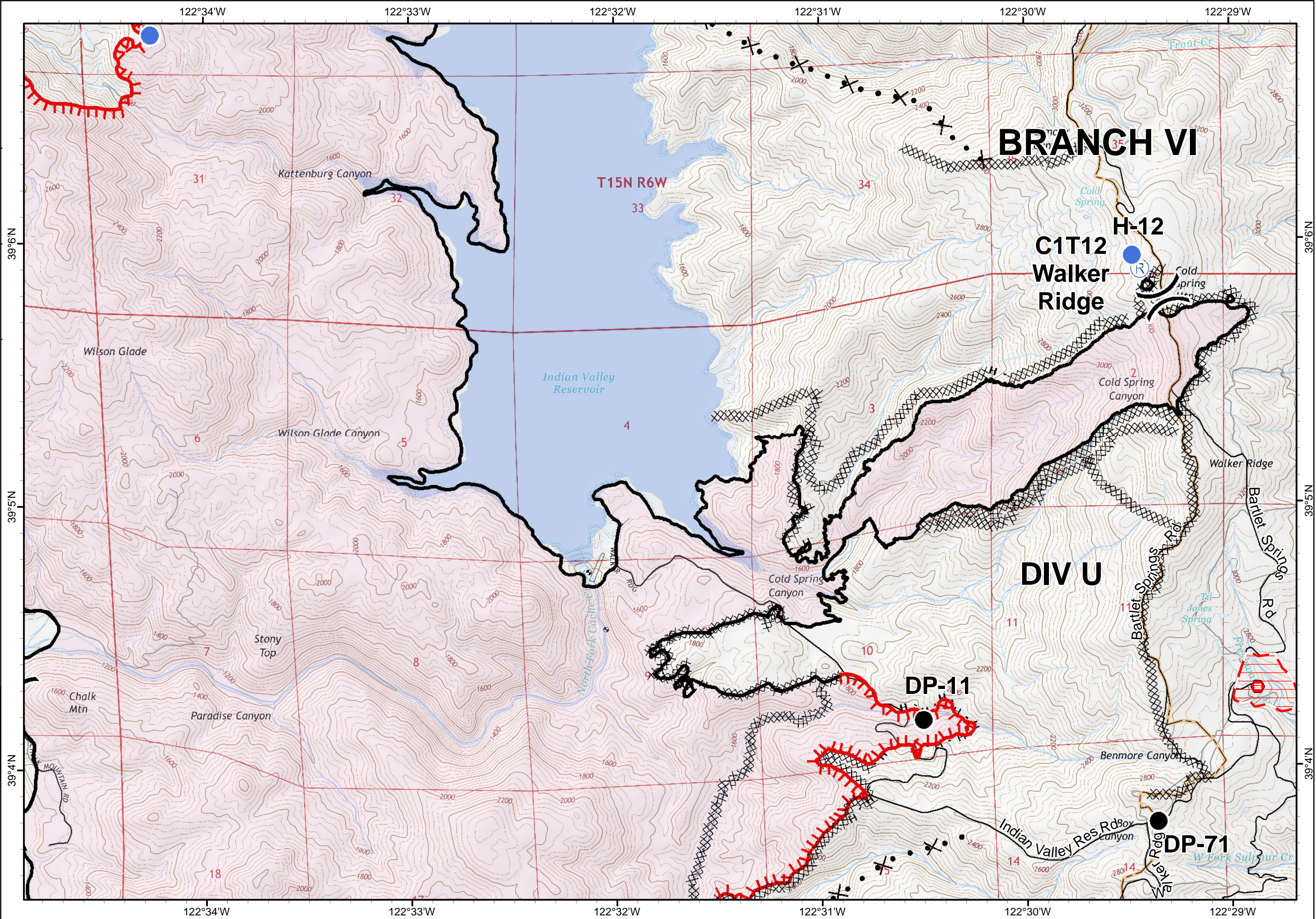
Pawnee Incident  
CA-LNU-009002  
June 30, 2018  
0700-0700

IAP  
Map  
Page 4

- Division Break
- Drop Point
- Helispot
- Repeater
- Uncontrolled Fire Edge
- Completed Line
- Completed Dozer Line
- Completed Hand Line
- Proposed Dozer Line
- Life Hazard
- Life Hazard Zone



1:24,000  
Team 3 GIS  
NAD 83

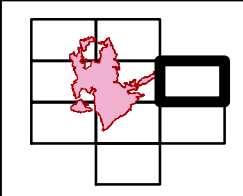




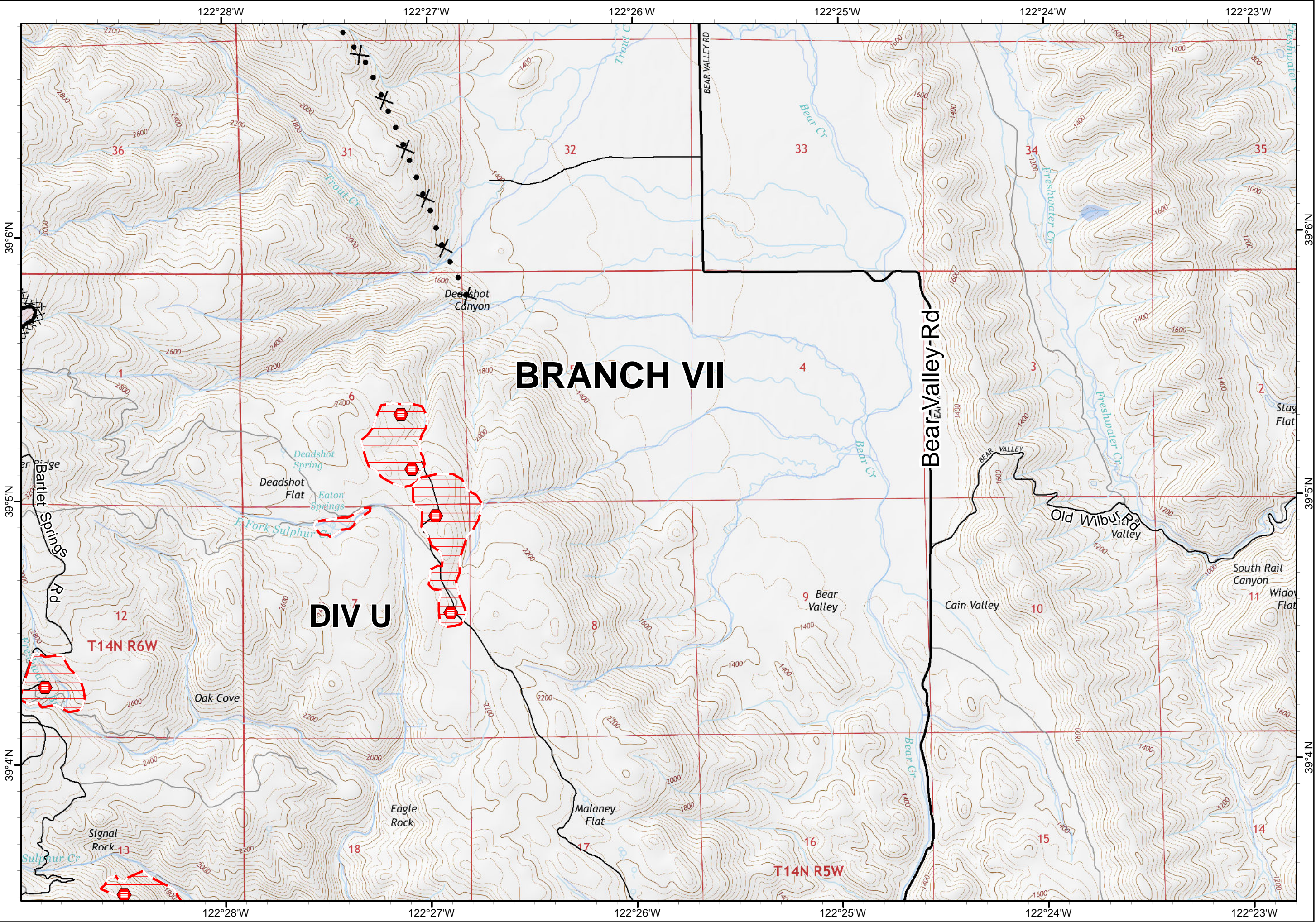
Pawnee Incident  
CA-LNU-009002  
June 30, 2018  
0700-0700

IAP  
Map  
Page 5

- Completed Line
- Completed Dozer Line
- Proposed Dozer Line
- Life Hazard
- Life Hazard Zone



1:24,000  
Team 3 GIS  
NAD 83

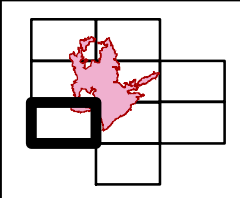




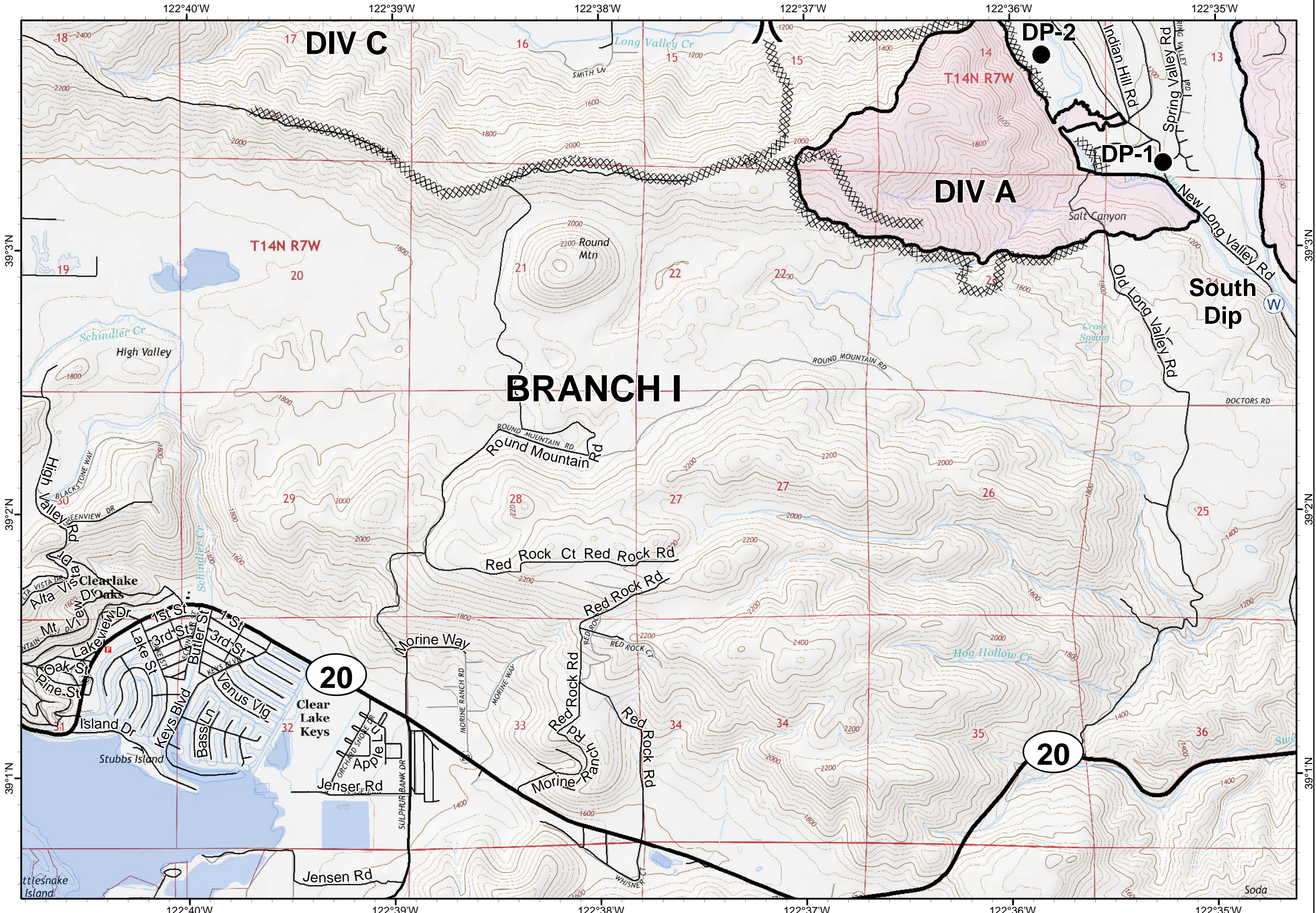
Pawnee Incident  
CA-LNU-009002  
June 30, 2018  
0700-0700

IAP  
Map  
Page 6

- Division Break
- Drop Point
- Water Source
- Completed Line
- Completed Dozer Line



1:24,000  
Team 3 GIS  
NAD 83



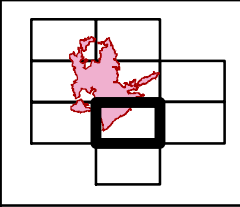





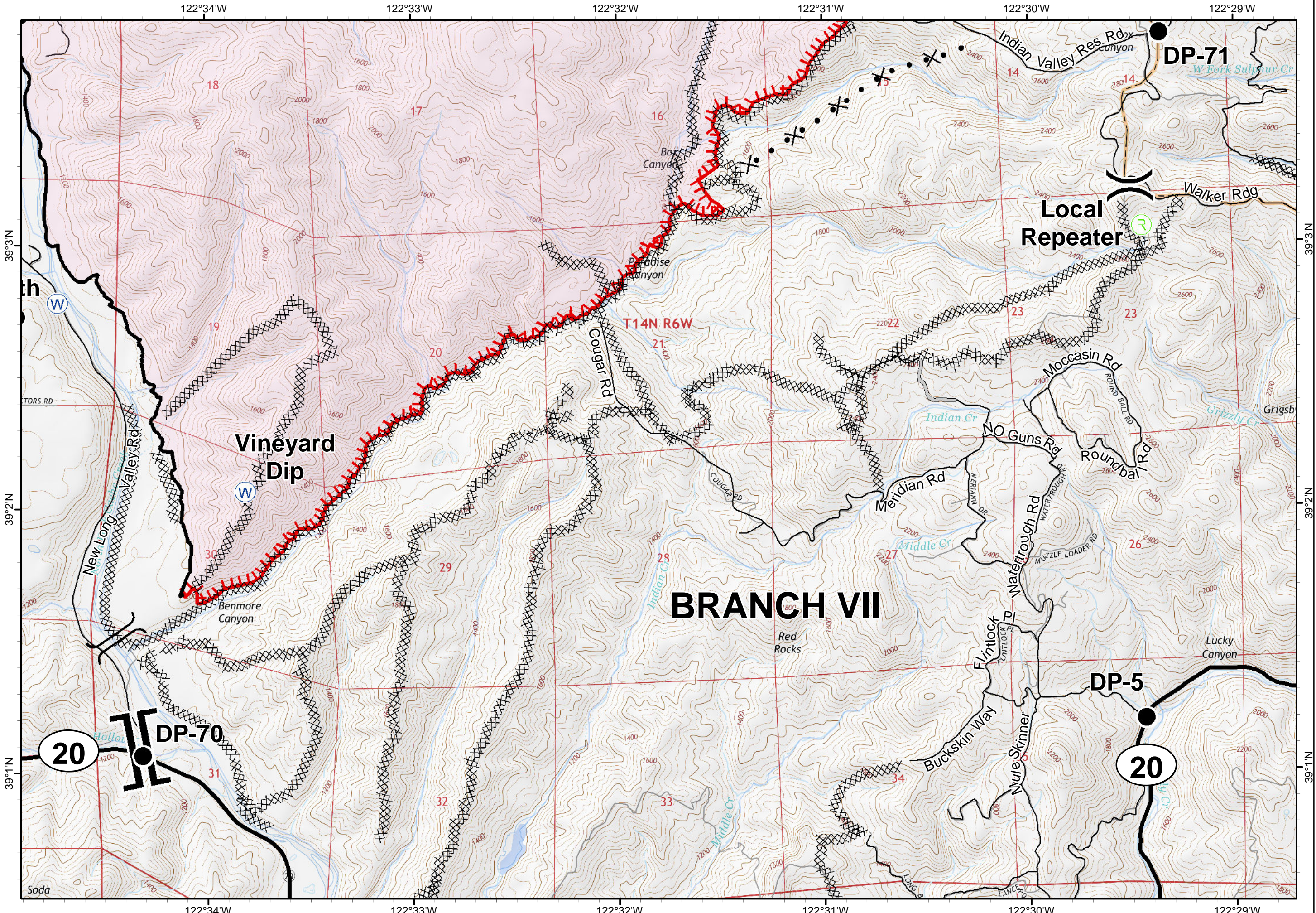
Pawnee Incident  
CA-LNU-009002  
June 30, 2018  
0700-0700

IAP  
Map  
Page 7

- Branch Break
- Division Break
- Drop Point
- Local Repeater
- Water Source
- Bridge
- Uncontrolled Fire Edge
- Completed Line
- Completed Dozer Line
- Completed Hand Line
- Access or Improved Road
- Proposed Dozer Line

1:24,000  
Team 3 GIS  
NAD 83

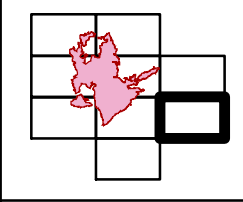




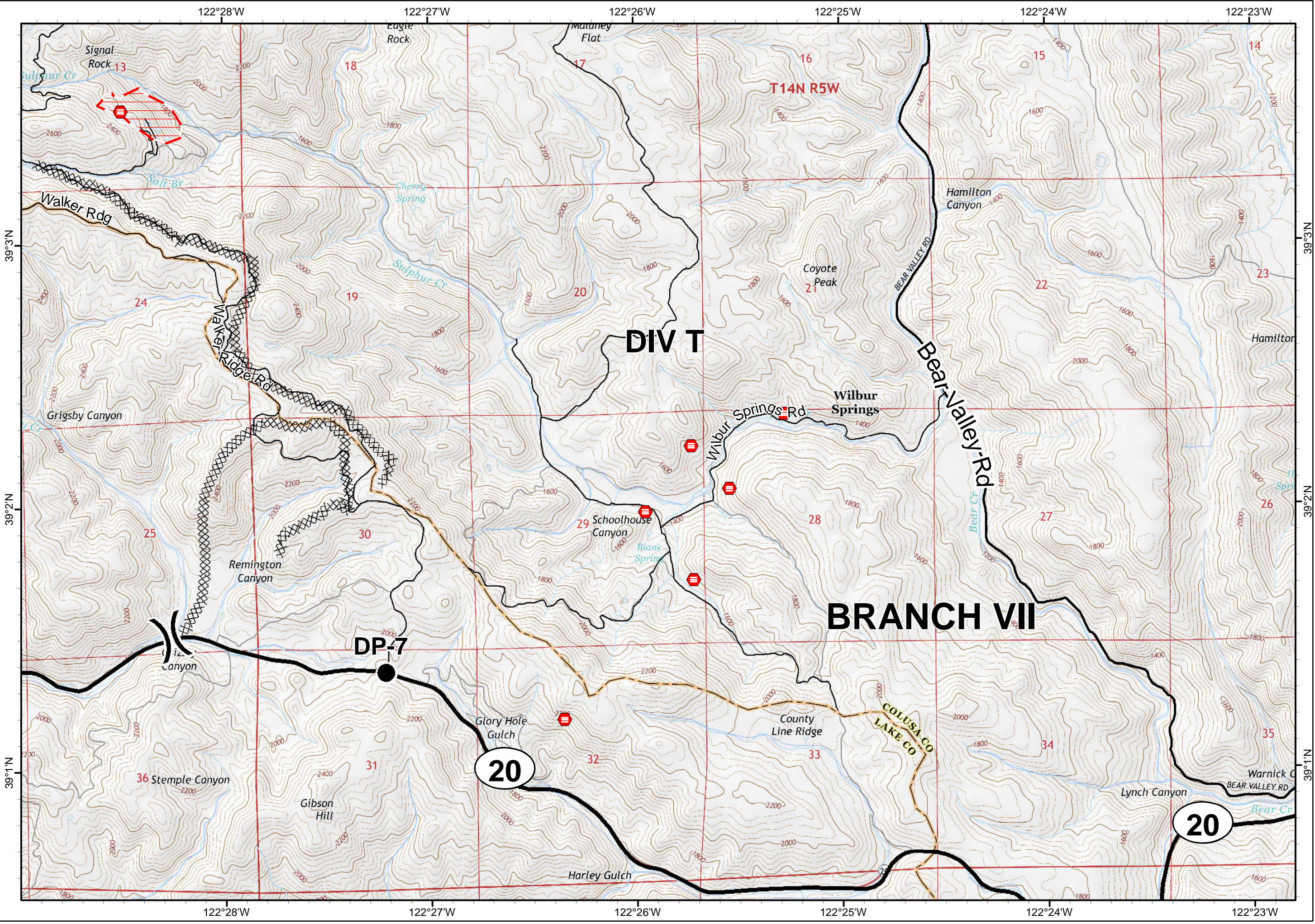
Pawnee Incident  
CA-LNU-009002  
June 30, 2018  
0700-0700

IAP  
Map  
Page 8

- Division Break
- Drop Point
- Completed Dozer Line
- Life Hazard
- Life Hazard Zone



1:24,000  
Team 3 GIS  
NAD 83



**DIV T**

**BRANCH VII**

**20**

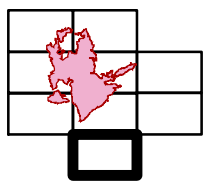
**20**



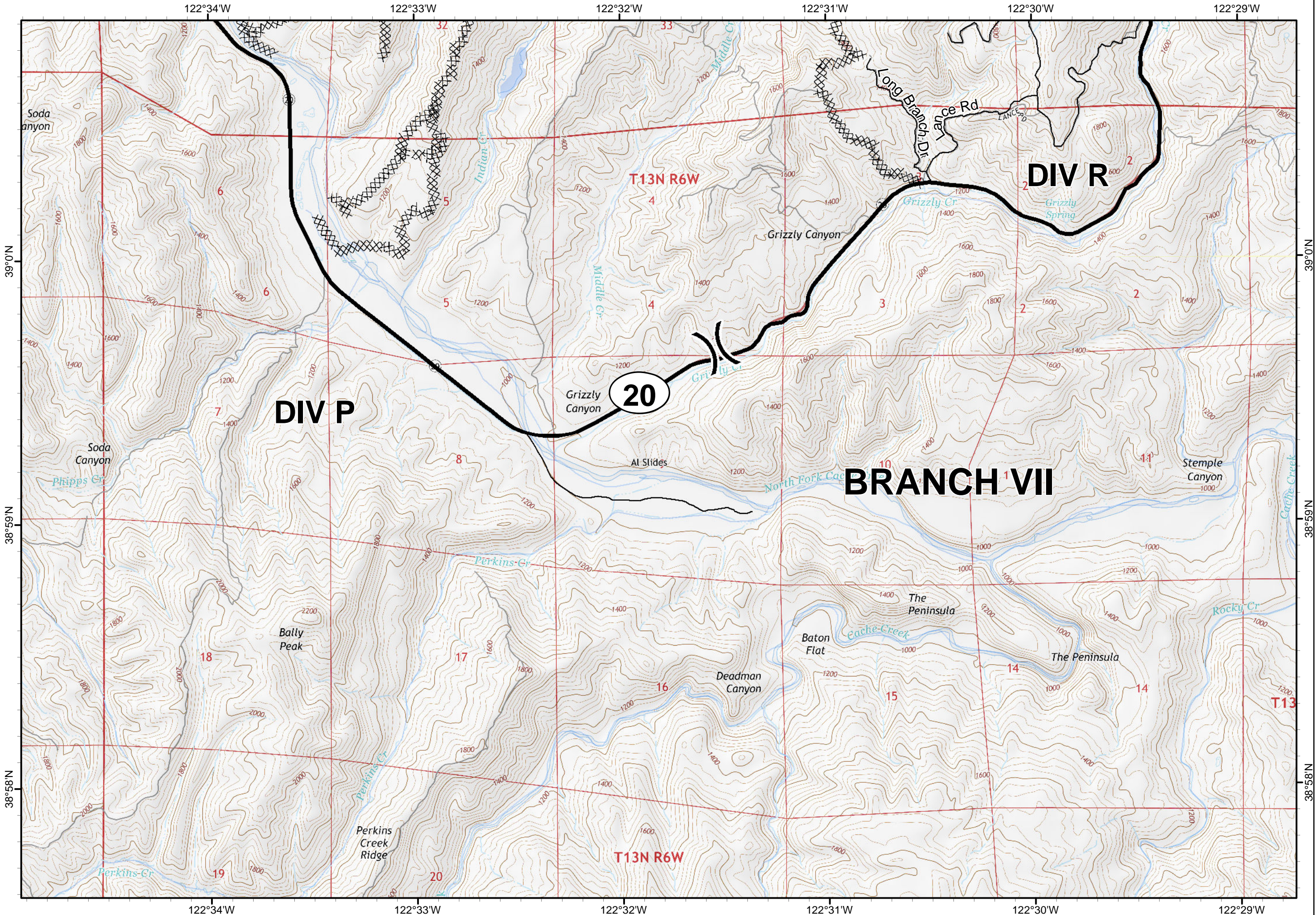
Pawnee Incident  
CA-LNU-009002  
June 30, 2018  
0700-0700

IAP  
Map  
Page 9

)) Division Break  
XX Completed Dozer Line



1:24,000  
Team 3 GIS  
NAD 83



122°34'W 122°33'W 122°32'W 122°31'W 122°30'W 122°29'W

39°0'N 38°59'N 38°58'N

Soda Canyon

Indian Cr

Middle Cr

Grizzly Cr

Grizzly Canyon

Long Branch Di Lance Rd

Grizzly Spring

**DIV R**

**DIV P**

Grizzly Canyon **20**

Al Slides

North Fork Cache Cr

**BRANCH VII**

Stemple Canyon

Cache Cr

Rocky Cr

The Peninsula

Baton Flat

Deadman Canyon

Perkins Cr

Perkins Cr

Perkins Creek Ridge

Bally Peak

Phipps Cr

T13N R6W

T13N R6W

1 2 3 4 5 6 7 8 9 10 11 12 13 14 15 16 17 18 19 20

122°34'W 122°33'W 122°32'W 122°31'W 122°30'W 122°29'W

38°58'N