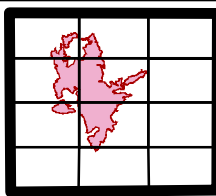
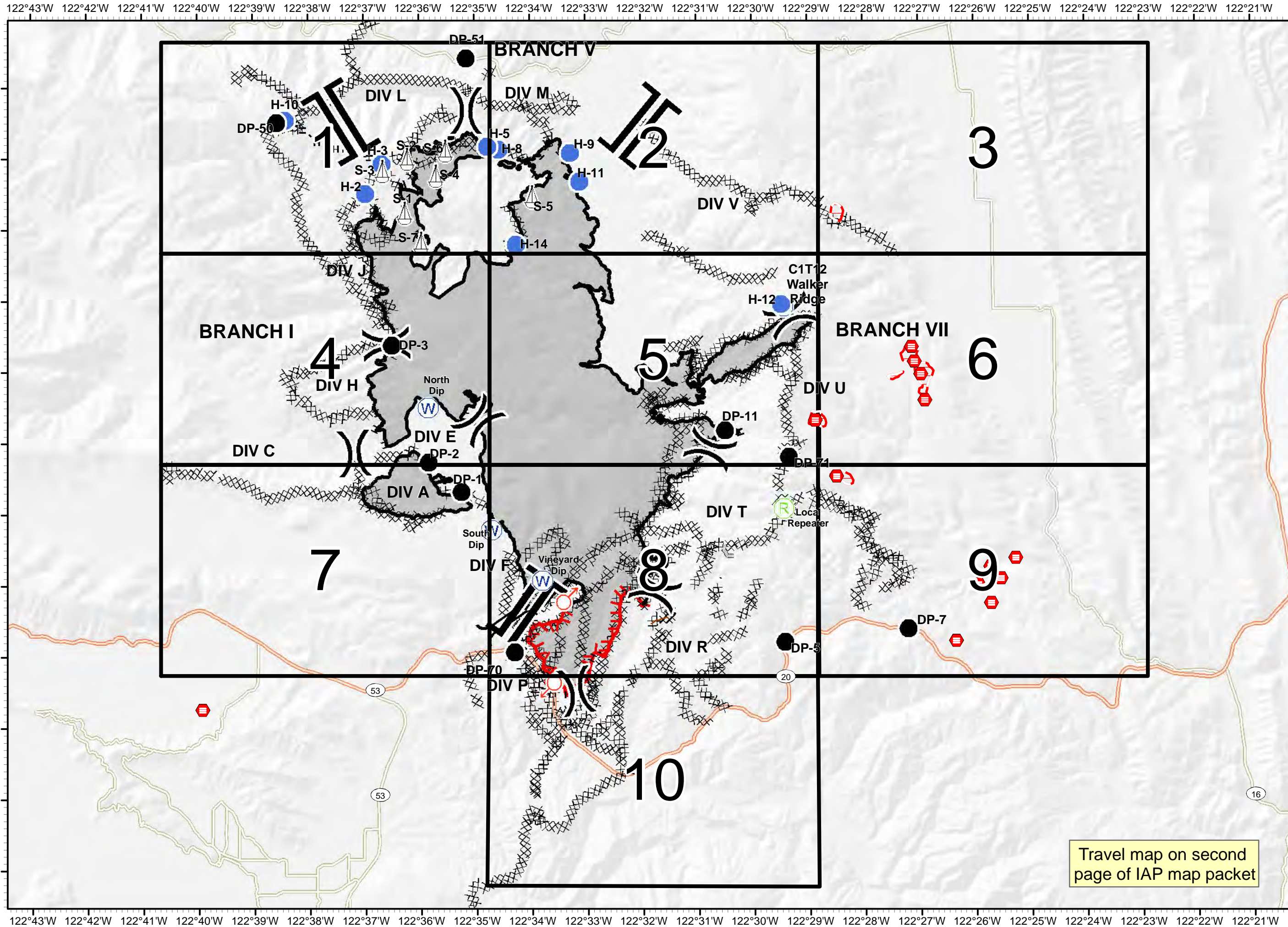




- Uncontrolled Fire Edge
- Completed Line
- Completed Dozer Line
- Completed Hand Line
- Access or Improved Road
- Branch Break
- Division Break
- Drop Point
- Helispot
- Repeater
- Local Repeater
- Sling Site
- Spot Fire
- Water Source
- Bridge
- Life Hazard
- Life Hazard Zone



1:90,000  
Team 3 GIS  
NAD 83





Pawnee Incident  
CA-LNU-009002

# Travel Map

7/5 - 7/10

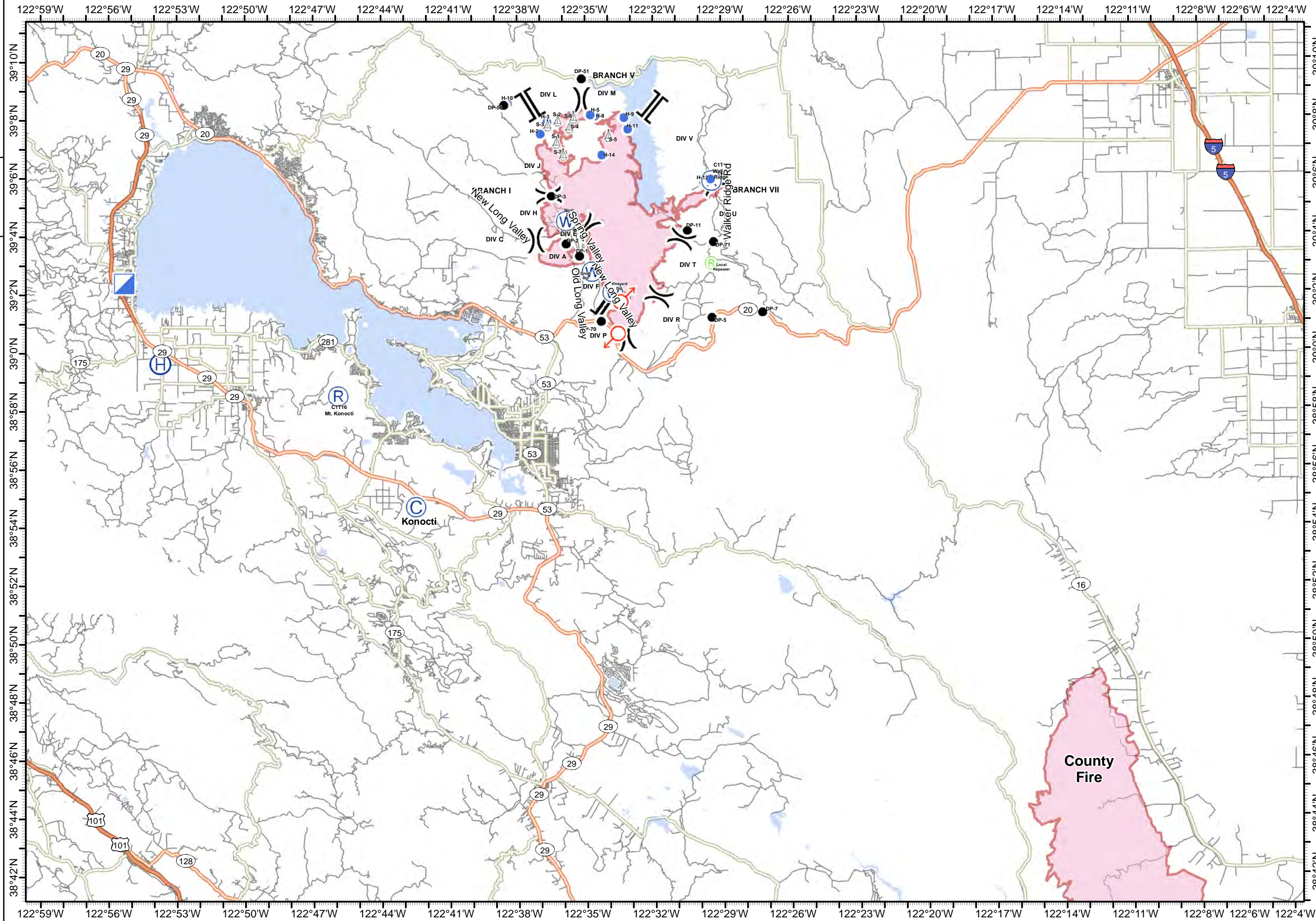


- Camp
- Drop Point
- Helibase
- Helispot
- Incident Command Post
- Repeater
- Sling Site
- Spot Fire
- Water Source
- Unknown
- Fuel
- Division Break
- Branch Break
- Wildfire Daily Fire Perimeter



1:218,000

Team 3 GIS  
NAD 83

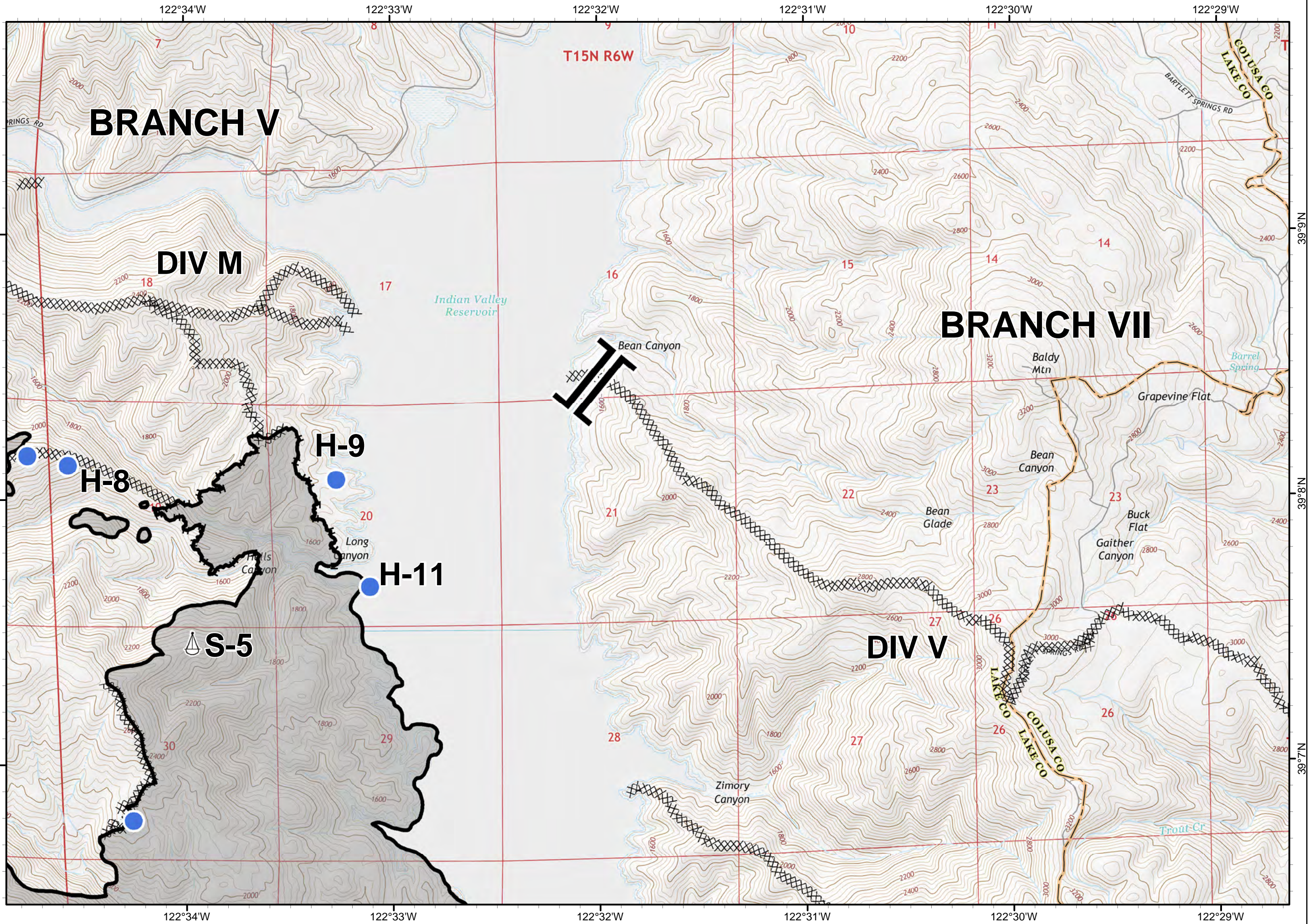


**County Fire**

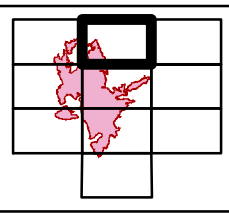








- Completed Line
- XX Completed Dozer Line
- H Completed Hand Line
- || Branch Break
- Helispot
- △ Sling Site

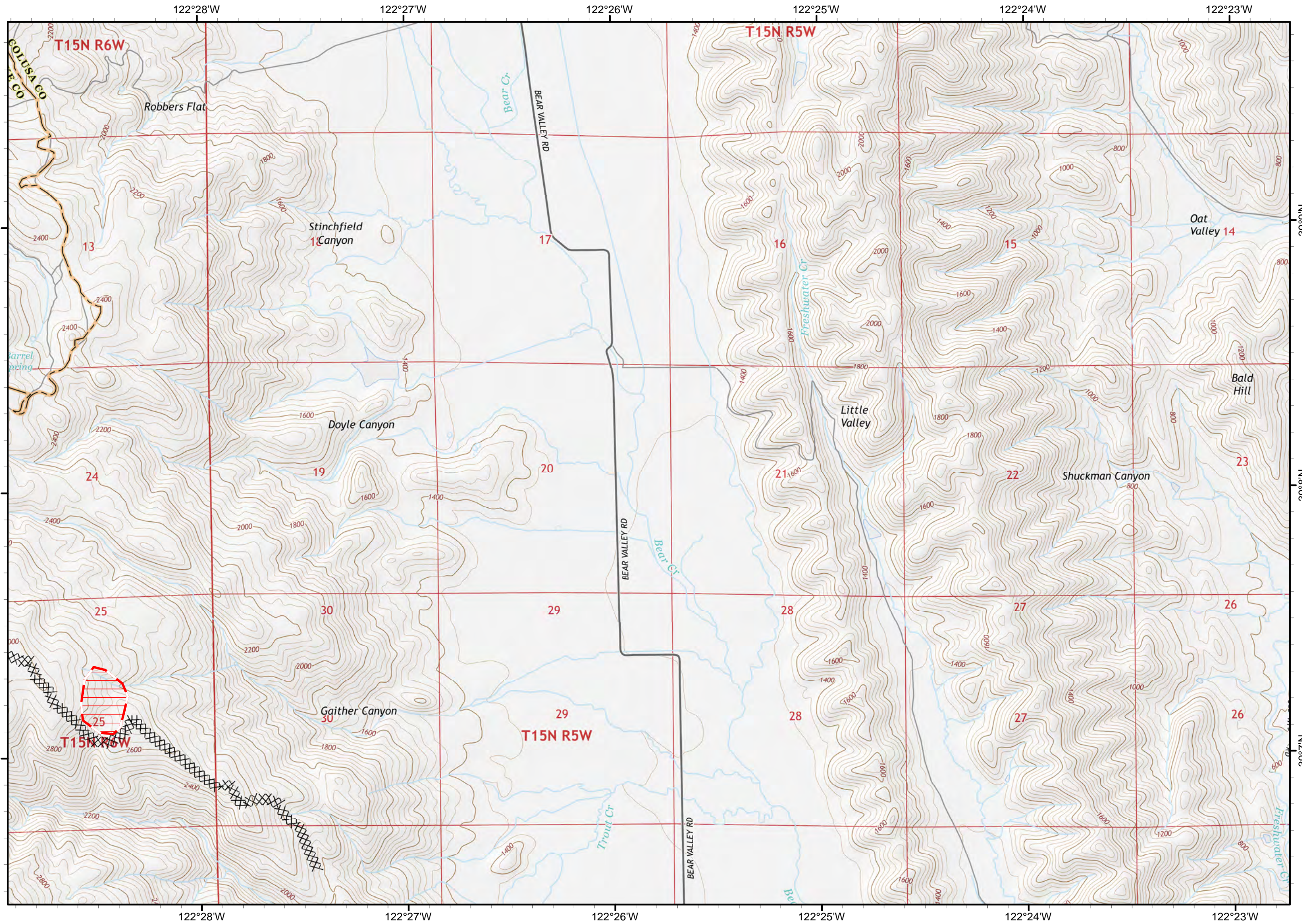


1:24,000  
Team 3 GIS  
NAD 83

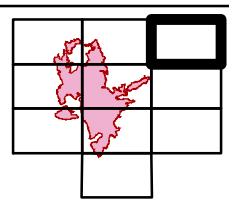


# IAP Map

7/5 - 7/10



XX Completed Dozer Line  
Life Hazard Zone

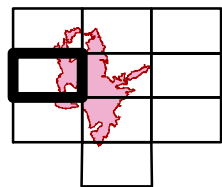


1:24,000  
Team 3 GIS  
NAD 83

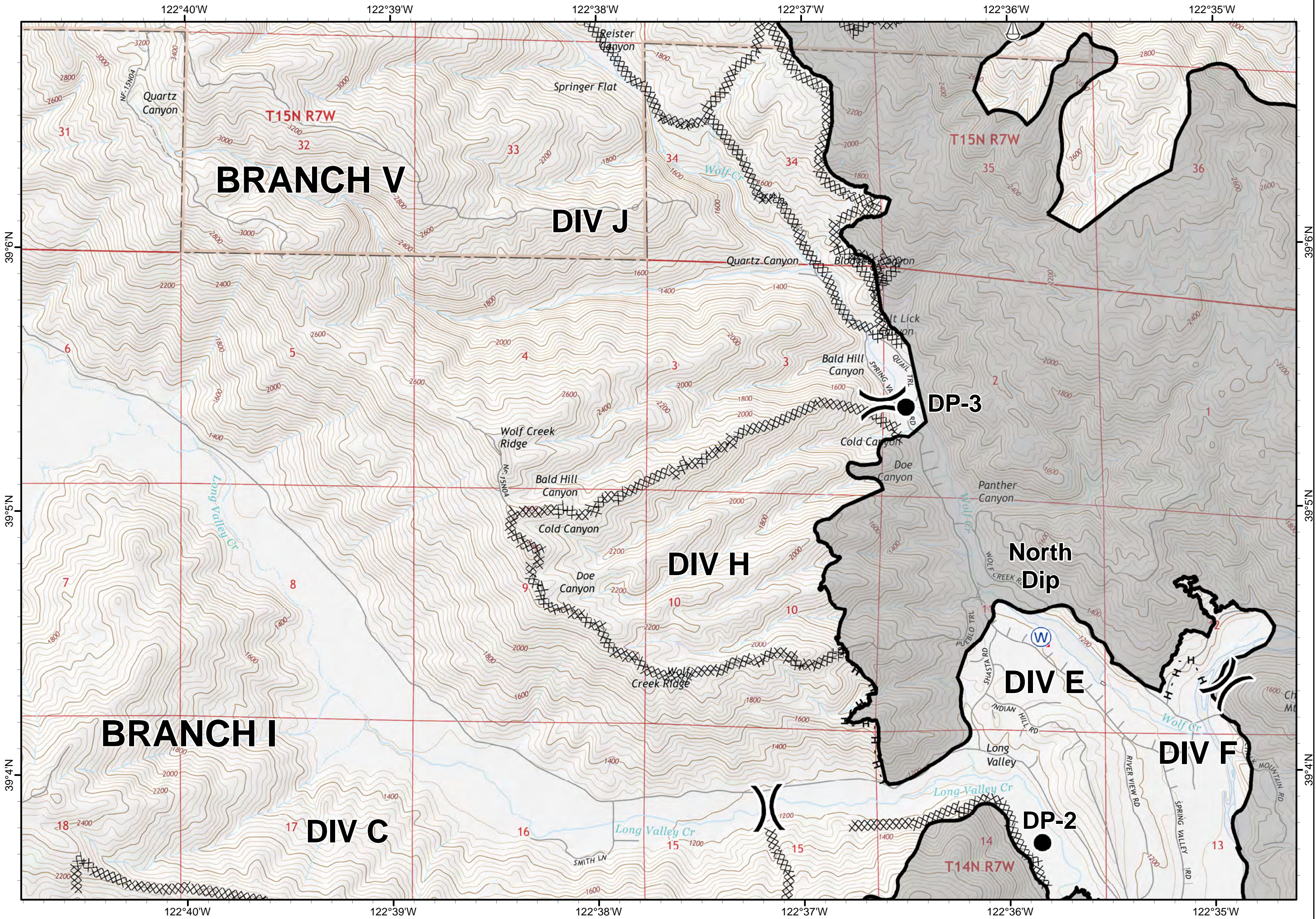




- Completed Line
- XX Completed Dozer Line
- H Completed Hand Line
- ) Division Break
- Drop Point
- ⚓ Sling Site
- W Water Source



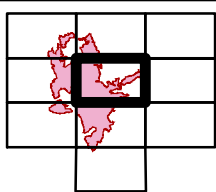
1:24,000  
Team 3 GIS  
NAD 83



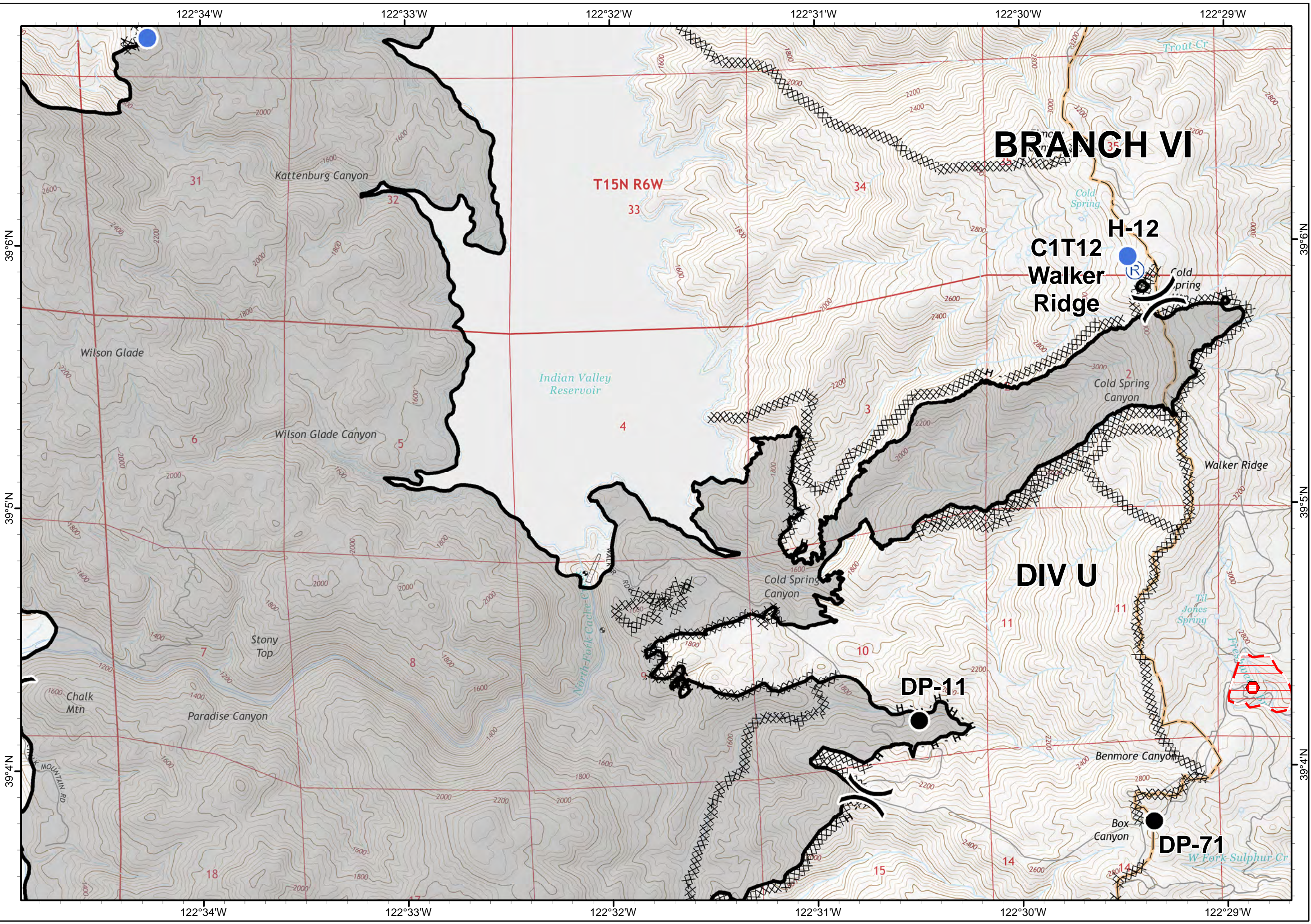




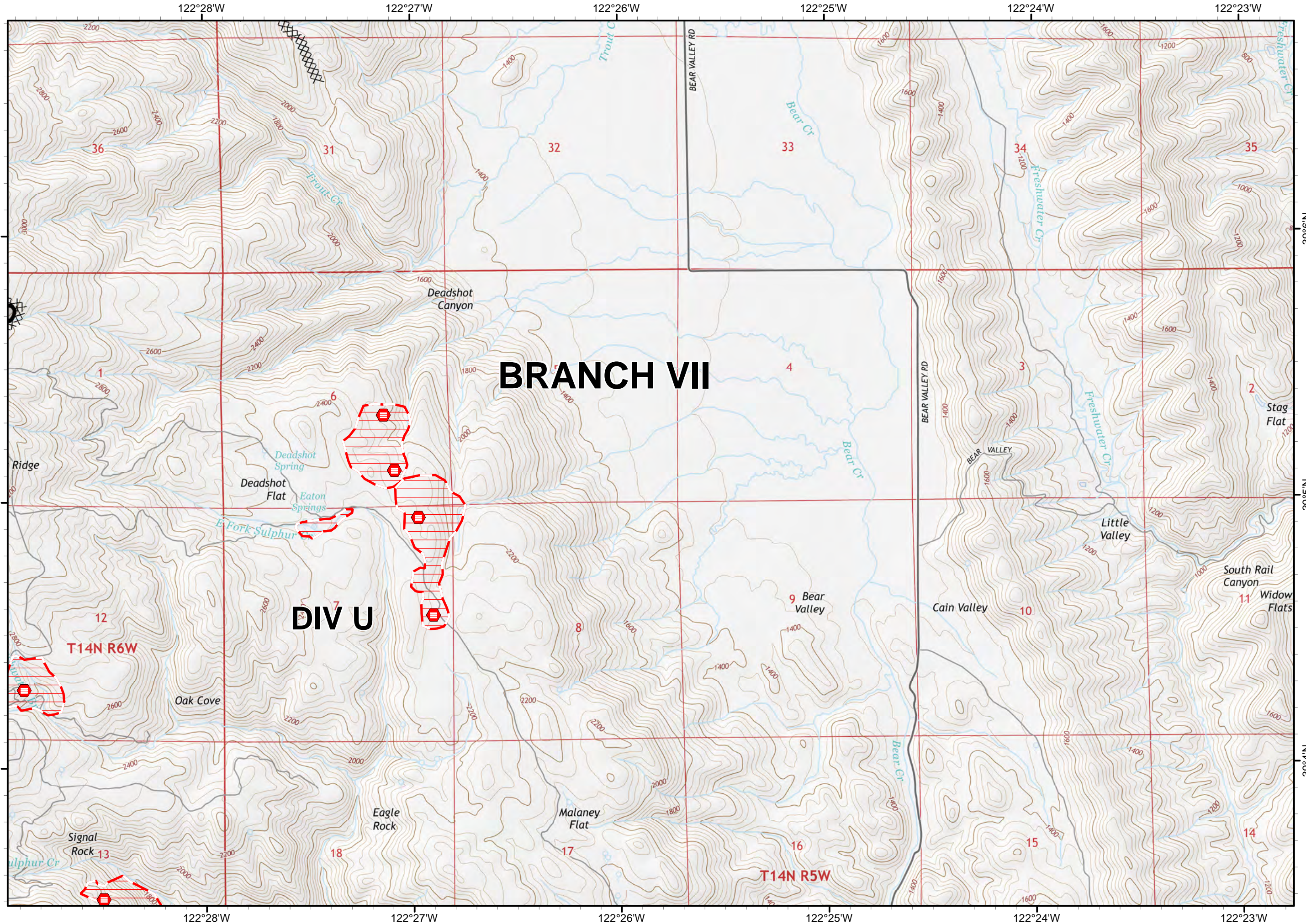
- Completed Line
- XX Completed Dozer Line
- H Completed Hand Line
- ) Division Break
- Drop Point
- Helispot
- Ⓡ Repeater
- ⚠ Life Hazard
- ⚠ Life Hazard Zone



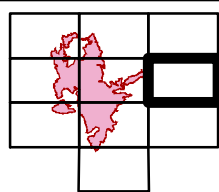
1:24,000  
Team 3 GIS  
NAD 83







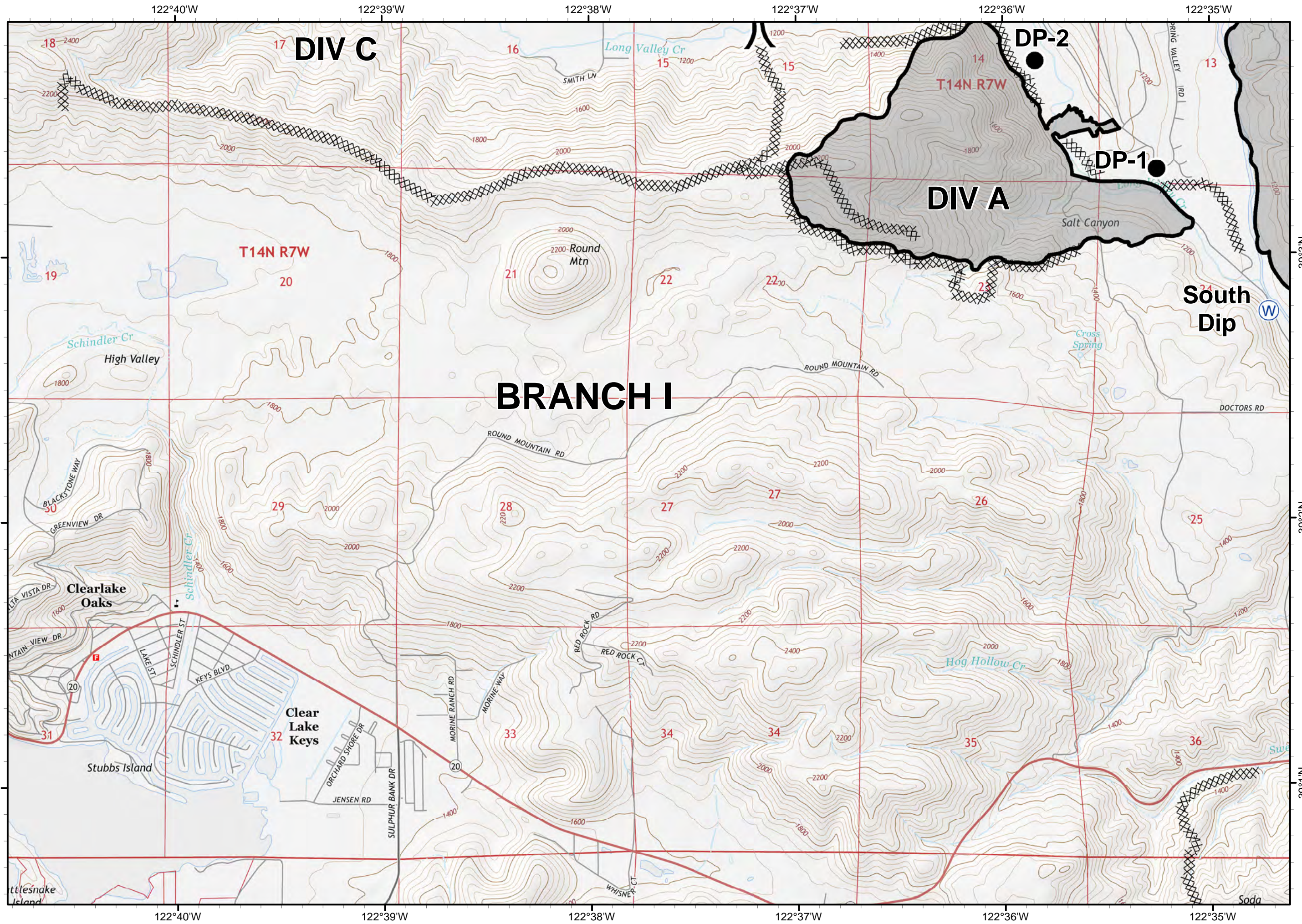
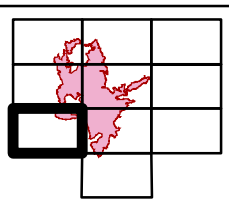
- Completed Line
- XX Completed Dozer Line
- Life Hazard
- Life Hazard Zone






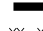
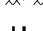











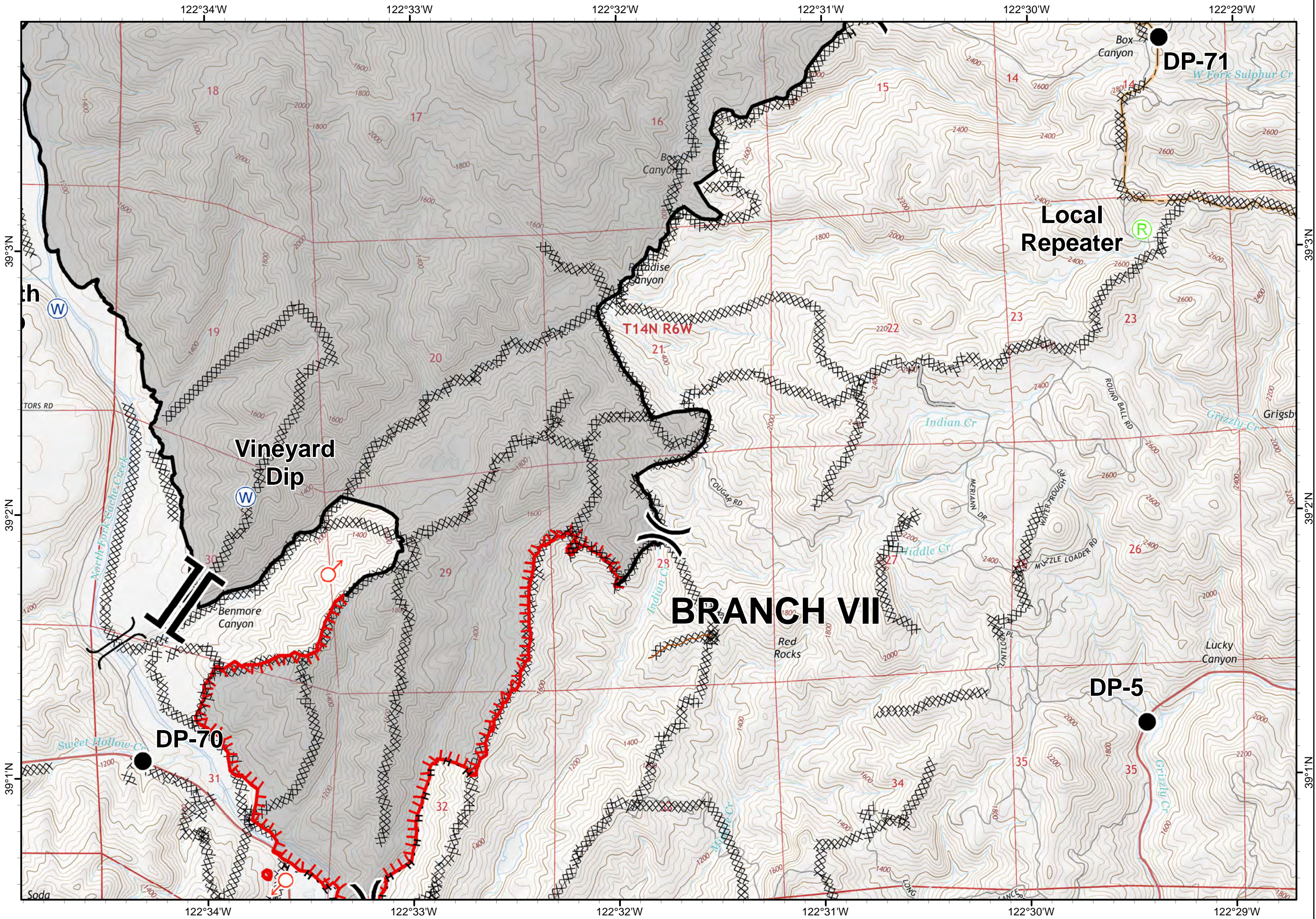
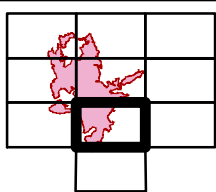
- Completed Line
- XX Completed Dozer Line
- ) Division Break
- Drop Point
- W Water Source



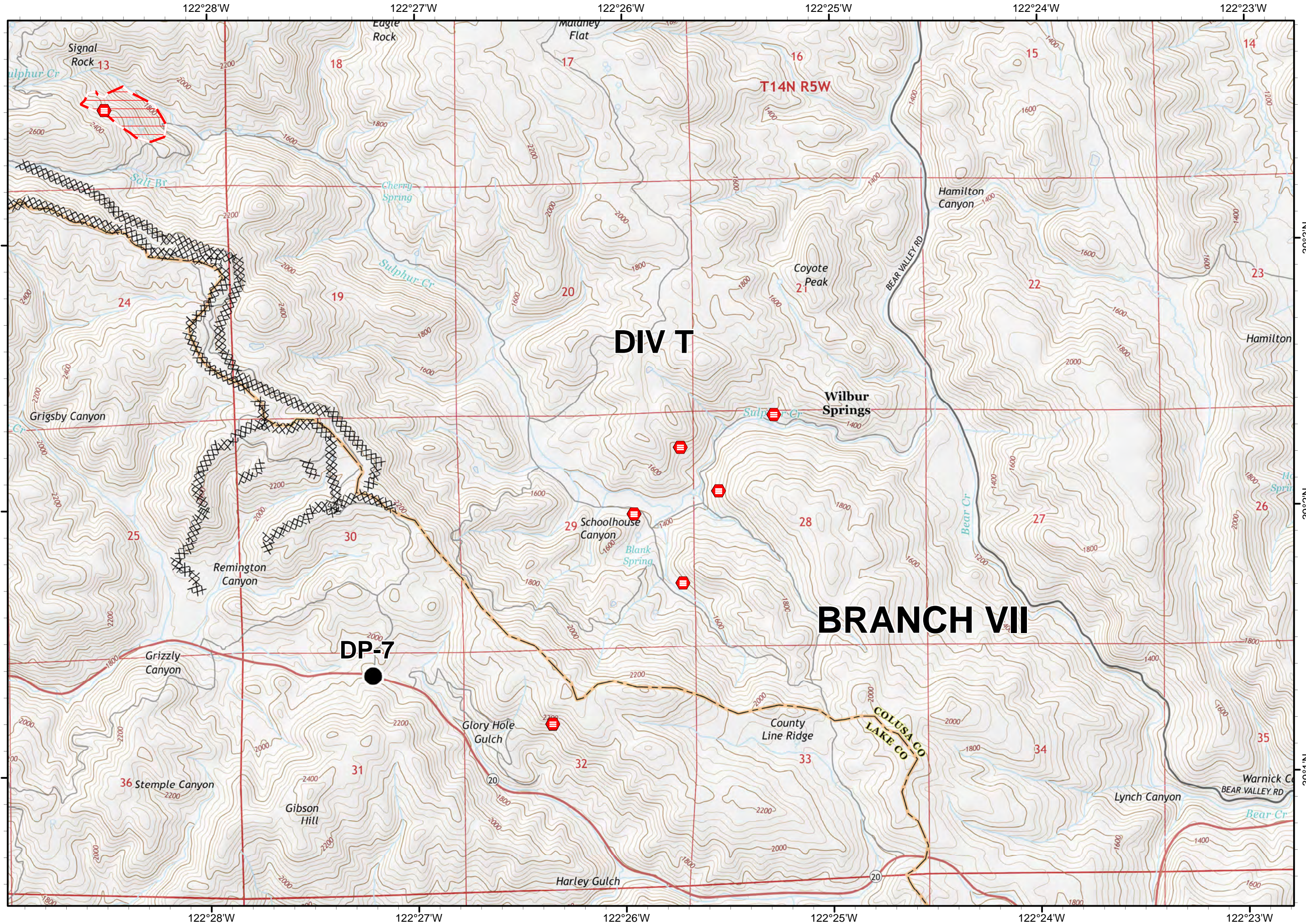




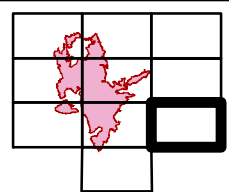
-  Uncontrolled Fire Edge
-  Completed Line
-  Completed Dozer Line
-  Completed Hand Line
-  Access or Improved Road
-  Branch Break
-  Division Break
-  Drop Point
-  Local Repeater
-  Spot Fire
-  Water Source
-  Bridge







- XX Completed Dozer Line
- Drop Point
- Life Hazard
- Life Hazard Zone

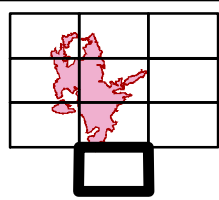


1:24,000  
Team 3 GIS  
NAD 83





- Uncontrolled Fire Edge
- Completed Dozer Line
- Completed Hand Line
- Division Break
- Spot Fire



1:24,000  
Team 3 GIS  
NAD 83

