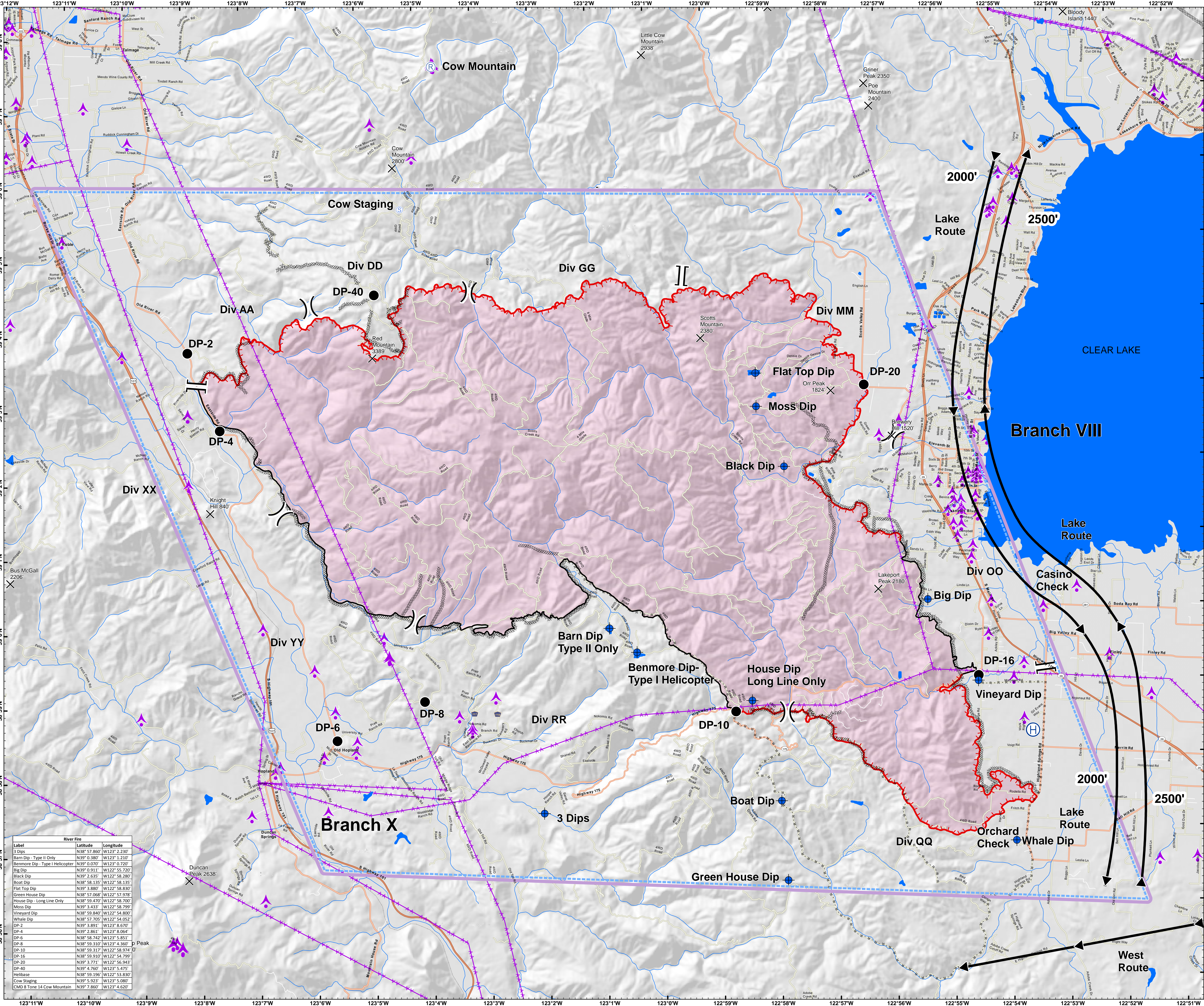




AIR OPERATIONS
Mendocino Complex
 CA-MEU-008674
 River Fire
 August 1, 2018

- Flight Route
- TFR
- Summits
- Division Break
- Branch Break
- Dip Site
- Drop Point
- Helibase
- Repeater
- Staging Area
- Uncontrolled Fire Edge
- Completed Line
- Completed Dozer Line
- Completed Hand Line
- Road as Completed Line
- Aviation Hazard
- Aerial Tower
- Fire Perimeter



Label	Latitude	Longitude
3 Dips	N38° 57.860'	W123° 2.230'
Barn Dip - Type II Only	N39° 0.380'	W123° 1.210'
Benmore Dip - Type I Helicopter	N39° 0.070'	W123° 0.730'
Big Dip	N39° 0.911'	W123° 55.720'
Black Dip	N39° 2.635'	W122° 58.280'
Boat Dip	N38° 58.135'	W122° 58.135'
Flat Top Dip	N39° 3.880'	W122° 58.830'
Green House Dip	N38° 57.068'	W122° 57.978'
House Dip - Long Line Only	N38° 59.470'	W122° 58.700'
Moss Dip	N39° 3.433'	W122° 58.799'
Vineyard Dip	N38° 59.840'	W122° 54.800'
Whale Dip	N38° 57.705'	W122° 54.052'
DP-2	N39° 3.891'	W123° 8.670'
DP-4	N39° 3.861'	W123° 8.064'
DP-6	N38° 58.742'	W123° 5.851'
DP-8	N38° 59.310'	W123° 4.360'
DP-10	N38° 59.317'	W122° 58.974'
DP-16	N38° 59.910'	W122° 54.799'
DP-20	N39° 3.771'	W122° 56.843'
DP-40	N39° 4.760'	W123° 5.475'
Helibase	N38° 59.196'	W122° 53.830'
Cow Staging	N39° 5.923'	W123° 5.080'
CMD 8 Tone 14 Cow Mountain	N39° 7.860'	W123° 4.620'

0 0.25 0.5 1 Miles

1:28,000

DISCLAIMER: The displayed incident data is approximate and should only be used for informational purposes. The information contained in supporting base layers was generated from GIS data maintained by different sources and agencies and is not necessarily accurate to mapping, surveying, or engineering standards.

MT 3 GIS 8/1/2018 3:28:54 AM