

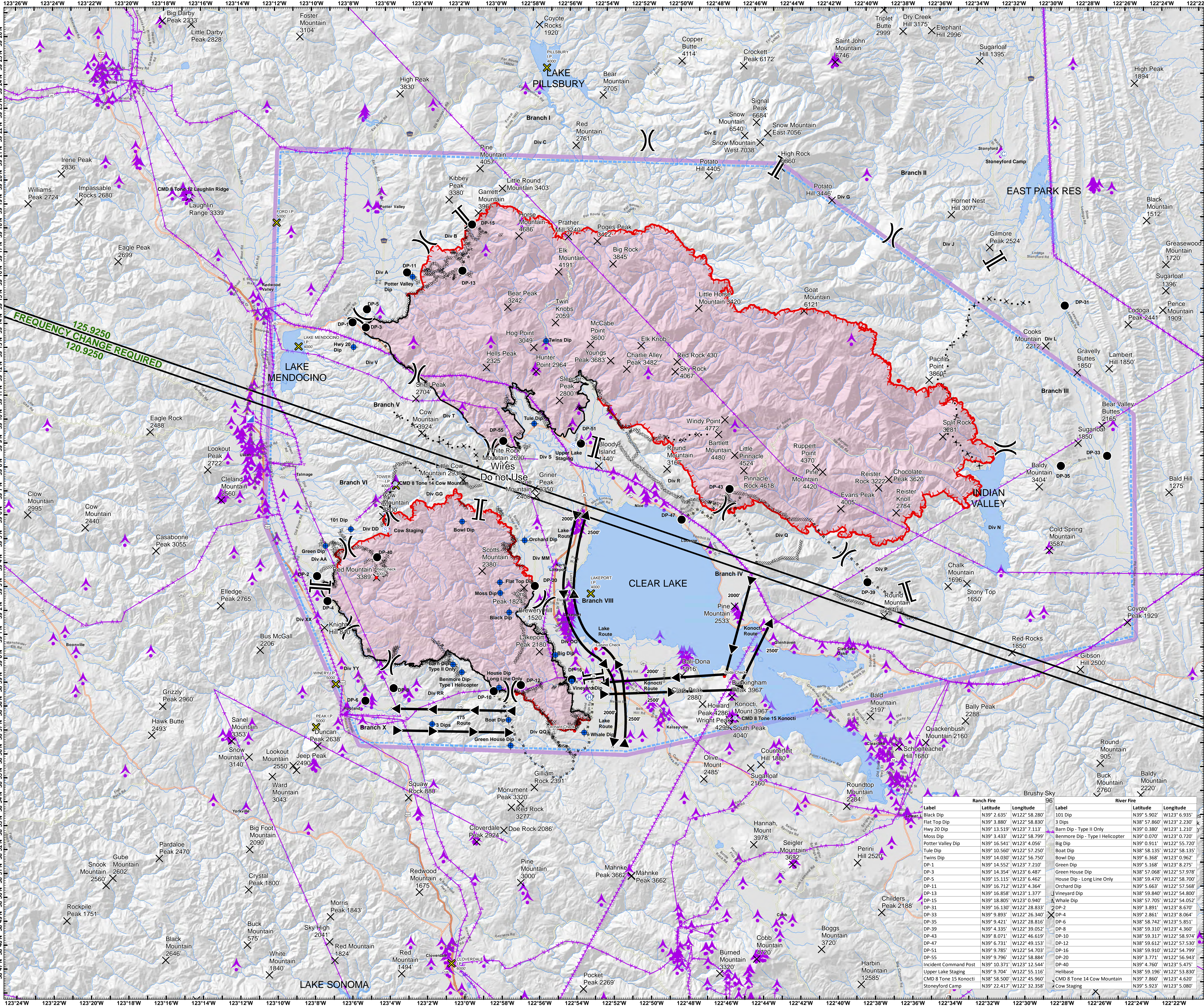


AIR OPERATIONS

Mendocino Complex

CA-MEU-008674
Ranch Fire & River Fire
August 4, 2018

- Division Break
- Branch Break
- Camp
- Dip Site
- Drop Point
- Helibase
- Incident Command Post
- Repeater
- Staging Area
- Uncontrolled Fire Edge
- Completed Line
- Completed Dozer Line
- Completed Hand Line
- Road as Completed Line
- Proposed Dozer Line
- Flight Route
- Check Locations
- Intersection Points
- Summits
- Aerial Tower
- Aviation Hazard
- TFR
- Fire Perimeter



FREQUENCY CHANGE REQUIRED
125.9250
120.9250

Ranch Fire			Brushy Sky 96'			River Fire		
Label	Latitude	Longitude	Label	Latitude	Longitude	Label	Latitude	Longitude
Black Dip	N39° 2.635'	W122° 58.280'	101 Dip	N39° 5.902'	W123° 6.935'	101 Dip	N39° 5.902'	W123° 6.935'
Flat Top Dip	N39° 3.880'	W122° 58.830'	3 Dips	N38° 57.860'	W123° 2.230'	3 Dips	N38° 57.860'	W123° 2.230'
Hwy 20 Dip	N39° 13.519'	W123° 7.113'	Barn Dip - Type II Only	N39° 0.380'	W123° 1.210'	Barn Dip - Type II Only	N39° 0.380'	W123° 1.210'
Moss Dip	N39° 3.433'	W122° 58.799'	Benmore Dip - Type I Helicopter	N39° 0.070'	W123° 0.720'	Benmore Dip - Type I Helicopter	N39° 0.070'	W123° 0.720'
Potter Valley Dip	N39° 16.541'	W123° 4.056'	Big Dip	N39° 0.911'	W122° 55.720'	Big Dip	N39° 0.911'	W122° 55.720'
Tule Dip	N39° 10.560'	W122° 57.250'	Boat Dip	N38° 58.135'	W123° 58.135'	Boat Dip	N38° 58.135'	W123° 58.135'
Twins Dip	N39° 14.030'	W122° 56.750'	Bowl Dip	N39° 6.368'	W123° 0.962'	Bowl Dip	N39° 6.368'	W123° 0.962'
DP-1	N39° 14.552'	W123° 7.210'	Green Dip	N39° 5.168'	W123° 8.275'	Green Dip	N39° 5.168'	W123° 8.275'
DP-3	N39° 14.355'	W123° 6.487'	Green House Dip	N38° 57.068'	W122° 57.978'	Green House Dip	N38° 57.068'	W122° 57.978'
DP-5	N39° 15.115'	W123° 6.462'	House Dip - Long Line Only	N38° 59.470'	W123° 58.700'	House Dip - Long Line Only	N38° 59.470'	W123° 58.700'
DP-11	N39° 16.712'	W123° 4.364'	Orchard Dip	N39° 5.663'	W122° 57.568'	Orchard Dip	N39° 5.663'	W122° 57.568'
DP-13	N39° 16.858'	W123° 1.377'	Vineyard Dip	N38° 59.840'	W122° 54.800'	Vineyard Dip	N38° 59.840'	W122° 54.800'
DP-15	N39° 18.805'	W123° 0.940'	Whale Dip	N38° 57.705'	W122° 54.052'	Whale Dip	N38° 57.705'	W122° 54.052'
DP-31	N39° 16.130'	W122° 28.833'	DP-2	N39° 3.891'	W123° 8.670'	DP-2	N39° 3.891'	W123° 8.670'
DP-33	N39° 9.893'	W122° 26.340'	DP-4	N39° 2.861'	W123° 8.064'	DP-4	N39° 2.861'	W123° 8.064'
DP-35	N39° 9.421'	W122° 28.816'	DP-6	N38° 58.742'	W123° 5.851'	DP-6	N38° 58.742'	W123° 5.851'
DP-39	N39° 4.335'	W122° 39.052'	DP-8	N38° 59.310'	W123° 4.360'	DP-8	N38° 59.310'	W123° 4.360'
DP-43	N39° 8.071'	W122° 46.619'	DP-10	N38° 59.317'	W122° 58.974'	DP-10	N38° 59.317'	W122° 58.974'
DP-47	N39° 6.731'	W122° 49.153'	DP-12	N38° 59.612'	W122° 57.530'	DP-12	N38° 59.612'	W122° 57.530'
DP-51	N39° 9.785'	W122° 54.793'	DP-16	N38° 59.910'	W122° 54.799'	DP-16	N38° 59.910'	W122° 54.799'
DP-55	N39° 9.796'	W122° 58.884'	DP-20	N39° 3.771'	W122° 56.943'	DP-20	N39° 3.771'	W122° 56.943'
Incident Command Post	N39° 10.371'	W123° 12.544'	DP-40	N39° 4.760'	W123° 5.475'	DP-40	N39° 4.760'	W123° 5.475'
Upper Lake Staging	N39° 9.704'	W122° 55.116'	Helibase	N38° 59.196'	W122° 53.830'	Helibase	N38° 59.196'	W122° 53.830'
CMD 8 Tone 15 Konociti	N39° 58.500'	W122° 45.960'	CMD 8 Tone 14 Cow Mountain	N39° 7.860'	W123° 4.620'	CMD 8 Tone 14 Cow Mountain	N39° 7.860'	W123° 4.620'
Stoneyford Camp	N39° 22.417'	W122° 32.358'	Cow Staging	N39° 5.923'	W123° 5.000'	Cow Staging	N39° 5.923'	W123° 5.000'

0 1 2 4 Miles

1:87,000

DISCLAIMER: The displayed incident data is approximate and should only be used for informational purposes. The information contained in supporting base layers was generated from GIS data maintained by different sources and agencies and is not necessarily accurate to mapping, surveying, or engineering standards.

MT 3.018 8/4/2018 8:13:14 AM