

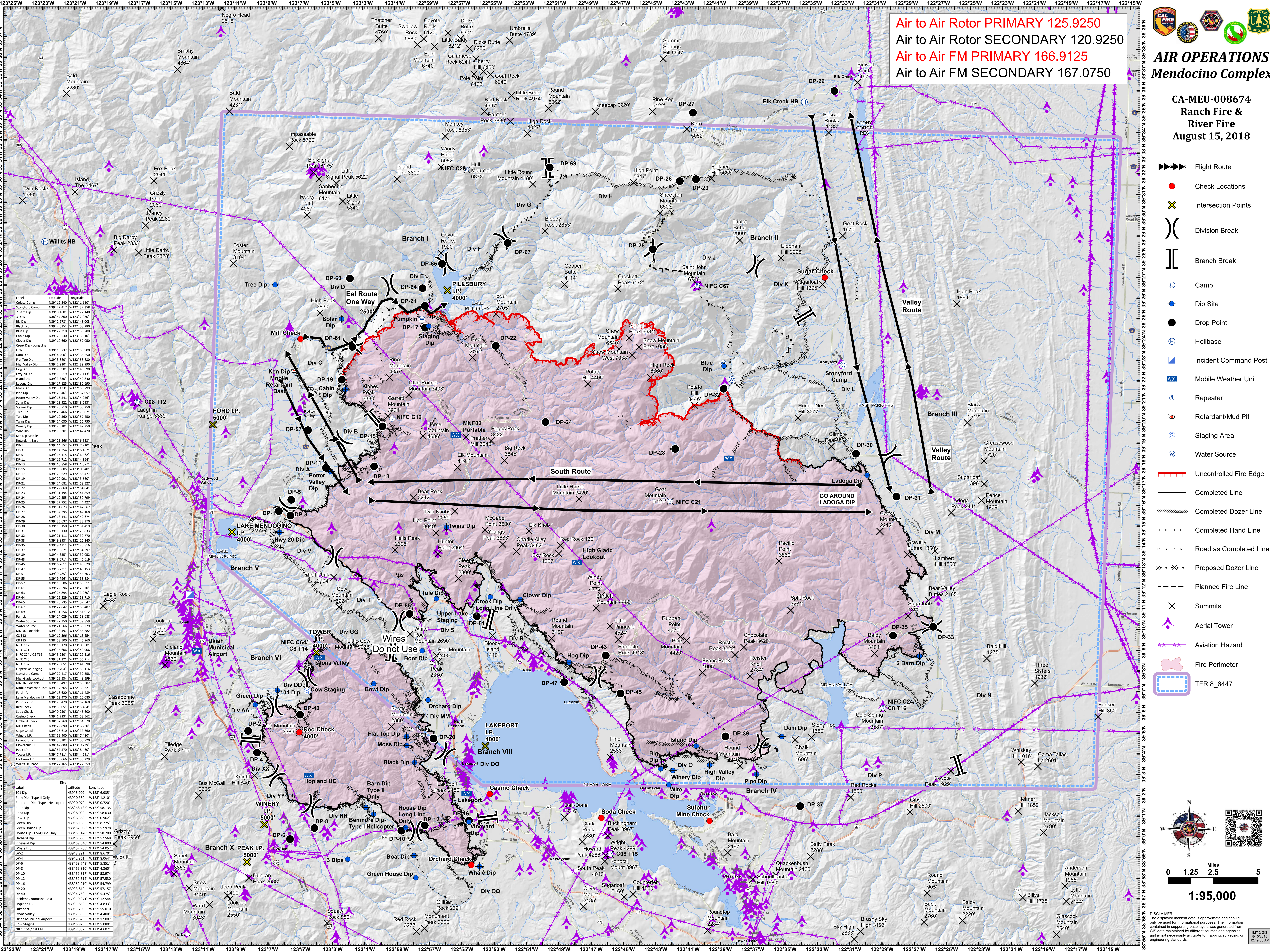
Air to Air Rotor PRIMARY 125.9250
Air to Air Rotor SECONDARY 120.9250
Air to Air FM PRIMARY 166.9125
Air to Air FM SECONDARY 167.0750



AIR OPERATIONS
Mendocino Complex

CA-MEU-008674
Ranch Fire &
River Fire
August 15, 2018

- Flight Route
- Check Locations
- Intersection Points
- Division Break
- Branch Break
- Camp
- Dip Site
- Drop Point
- Helibase
- Incident Command Post
- Mobile Weather Unit
- Repeater
- Retardant/Mud Pit
- Staging Area
- Water Source
- Uncontrolled Fire Edge
- Completed Line
- Completed Dozer Line
- Completed Hand Line
- Road as Completed Line
- Proposed Dozer Line
- Planned Fire Line
- Summits
- Aerial Tower
- Aviation Hazard
- Fire Perimeter
- TFR 8_6447



| Label | Latitude | Longitude |
|---------------------------------|--------------|---------------|
| Colony Camp | N39° 22.417' | W122° 52.358' |
| 2 Barn Dip | N39° 8.460' | W122° 27.140' |
| 1 Dip | N39° 5.800' | W122° 2.200' |
| Big Dip | N39° 2.676' | W122° 43.003' |
| Black Dip | N39° 2.635' | W122° 58.280' |
| Blue Dip | N39° 2.200' | W122° 58.780' |
| Cabin Dip | N39° 20.550' | W123° 3.310' |
| Clover Dip | N39° 10.660' | W122° 52.050' |
| Crow Dip - Long Line | | |
| Only | N39° 10.732' | W122° 53.900' |
| Dam Dip | N39° 4.400' | W122° 25.550' |
| Flat Top Dip | N39° 1.880' | W122° 58.990' |
| High Valley Dip | N39° 2.930' | W122° 39.990' |
| Hog Dip | N39° 7.690' | W122° 48.890' |
| High Dip | N39° 13.550' | W122° 1.133' |
| Island Dip | N39° 3.830' | W122° 40.840' |
| Ladoga Dip | N39° 17.125' | W122° 30.690' |
| Moos Dip | N39° 3.433' | W122° 58.790' |
| Pipe Dip | N39° 2.540' | W122° 37.057' |
| Potter Valley Dip | N39° 16.541' | W122° 4.056' |
| Solar Dip | N39° 23.920' | W122° 5.093' |
| Staging Dip | N39° 23.710' | W122° 58.250' |
| Tree Dip | N39° 25.460' | W122° 7.907' |
| Trill Dip | N39° 14.560' | W122° 7.250' |
| Twin Dip | N39° 14.030' | W122° 56.750' |
| Winery Dip | N39° 2.610' | W122° 42.230' |
| Wire Dip | N39° 6.900' | W122° 42.470' |
| Ken Dip Mobile Restaurant Base | | |
| DP-1 | N39° 23.360' | W122° 6.533' |
| DP-2 | N39° 14.552' | W122° 7.210' |
| DP-3 | N39° 14.354' | W122° 6.487' |
| DP-4 | N39° 11.115' | W122° 6.462' |
| DP-5 | N39° 16.712' | W122° 9.364' |
| DP-6 | N39° 16.858' | W122° 1.377' |
| DP-7 | N39° 21.800' | W122° 5.960' |
| DP-8 | N39° 23.629' | W122° 58.477' |
| DP-9 | N39° 20.991' | W122° 3.560' |
| DP-10 | N39° 21.550' | W122° 58.533' |
| DP-11 | N39° 22.860' | W122° 54.041' |
| DP-12 | N39° 31.194' | W122° 8.859' |
| DP-13 | N39° 21.800' | W122° 5.960' |
| DP-14 | N39° 22.752' | W122° 44.427' |
| DP-15 | N39° 31.073' | W122° 42.867' |
| DP-16 | N39° 18.350' | W122° 42.867' |
| DP-17 | N39° 18.141' | W122° 42.674' |
| DP-18 | N39° 35.637' | W122° 38.370' |
| DP-19 | N39° 18.150' | W122° 42.867' |
| DP-20 | N39° 16.130' | W122° 28.833' |
| DP-21 | N39° 9.421' | W122° 28.816' |
| DP-22 | N39° 1.007' | W122° 34.297' |
| DP-23 | N39° 4.335' | W122° 36.922' |
| DP-24 | N39° 6.261' | W122° 46.619' |
| DP-25 | N39° 6.731' | W122° 46.619' |
| DP-26 | N39° 9.785' | W122° 54.703' |
| DP-27 | N39° 9.796' | W122° 58.884' |
| DP-28 | N39° 14.560' | W122° 5.961' |
| DP-29 | N39° 22.596' | W122° 2.970' |
| DP-30 | N39° 25.895' | W122° 3.260' |
| DP-31 | N39° 14.560' | W122° 58.710' |
| DP-32 | N39° 26.735' | W122° 57.542' |
| DP-33 | N39° 27.842' | W122° 53.487' |
| DP-34 | N39° 31.556' | W122° 51.012' |
| Pumpkin | N39° 24.029' | W122° 58.688' |
| Water Source | N39° 21.550' | W122° 58.533' |
| MNF02 Portable | N39° 18.497' | W122° 39.279' |
| Water Source | N39° 21.550' | W122° 58.533' |
| CR T15 | N39° 58.500' | W122° 45.960' |
| NIFC C12 | N39° 19.170' | W122° 3.860' |
| NIFC C13 | N39° 15.000' | W122° 9.900' |
| NIFC C24 / C8 T16 | N39° 5.920' | W122° 29.310' |
| NIFC C26 | N39° 33.321' | W122° 56.214' |
| NIFC C27 | N39° 28.083' | W122° 51.557' |
| Upperlake Staging | N39° 9.704' | W122° 55.110' |
| Stonford Camp | N39° 22.417' | W122° 32.358' |
| High Glade Lookout | N39° 18.497' | W122° 39.279' |
| MNF02 Portable | N39° 18.497' | W122° 39.279' |
| Food | N39° 14.030' | W122° 10.080' |
| Pillsbury I.P. | N39° 25.470' | W122° 57.160' |
| Red Check | N39° 3.900' | W122° 46.600' |
| Soda Check | N39° 0.230' | W122° 46.600' |
| Casino Check | N39° 1.220' | W122° 53.560' |
| Orchard Check | N39° 14.760' | W122° 54.790' |
| Mill Check | N39° 22.880' | W122° 6.220' |
| Sugar Check | N39° 26.510' | W122° 33.660' |
| Winery I.P. | N39° 58.400' | W122° 3.480' |
| Lakeport I.P. | N39° 3.530' | W122° 53.920' |
| Cloverleaf I.P. | N39° 18.880' | W122° 3.770' |
| Peak I.P. | N39° 57.570' | W122° 1.460' |
| Tower I.P. | N39° 7.781' | W122° 4.591' |
| Elk Creek HB | N39° 18.560' | W122° 54.833' |
| Willits HB | N39° 27.165' | W122° 22.250' |
| 101 Dip | N39° 5.902' | W123° 6.935' |
| Barn Dip - Type II Only | N39° 0.380' | W123° 1.210' |
| Benmore Dip - Type I Helicopter | N39° 0.070' | W123° 2.720' |
| Boat Dip | N39° 58.135' | W122° 58.135' |
| Boat Dip | N39° 8.030' | W122° 58.030' |
| Row Dip | N39° 3.368' | W123° 0.962' |
| Green Dip | N39° 5.168' | W122° 5.225' |
| Green House Dip | N39° 57.068' | W122° 57.978' |
| House Dip - Long Line Only | N39° 59.470' | W122° 58.700' |
| Orchard Dip | N39° 5.613' | W122° 52.560' |
| Vineyard Dip | N39° 59.840' | W122° 54.800' |
| White Dip | N39° 57.700' | W122° 54.052' |
| DP-1 | N39° 3.891' | W123° 6.070' |
| DP-4 | N39° 2.861' | W123° 8.064' |
| DP-6 | N39° 58.742' | W123° 5.851' |
| DP-10 | N39° 59.510' | W123° 4.260' |
| DP-12 | N39° 59.317' | W122° 58.974' |
| DP-16 | N39° 59.812' | W122° 57.530' |
| DP-19 | N39° 59.910' | W122° 54.799' |
| DP-30 | N39° 3.812' | W122° 52.157' |
| DP-40 | N39° 4.760' | W123° 5.475' |
| Incident Command Post | N39° 10.371' | W123° 12.544' |
| Hopland UC | N39° 7.760' | W123° 12.007' |
| Lakeport | N39° 5.920' | W123° 1.000' |
| Lakeport | N39° 1.200' | W122° 55.010' |
| Lyons Valley | N39° 7.550' | W123° 4.400' |
| Ukiah Municipal Airport | N39° 7.760' | W123° 12.007' |
| Cow Staging | N39° 7.852' | W123° 6.002' |
| NIFC C64 / C8 T14 | N39° 7.852' | W123° 6.002' |

0 1.25 2.5 5 Miles

1:95,000

DISCLAIMER: The displayed incident data is approximate and should only be used for informational purposes. The information contained in supporting base layers was generated from GIS data maintained by different sources and agencies and is not necessarily accurate to mapping, surveying, or engineering standards.

MUT 2.018
8/15/2018
12:18:08 AM