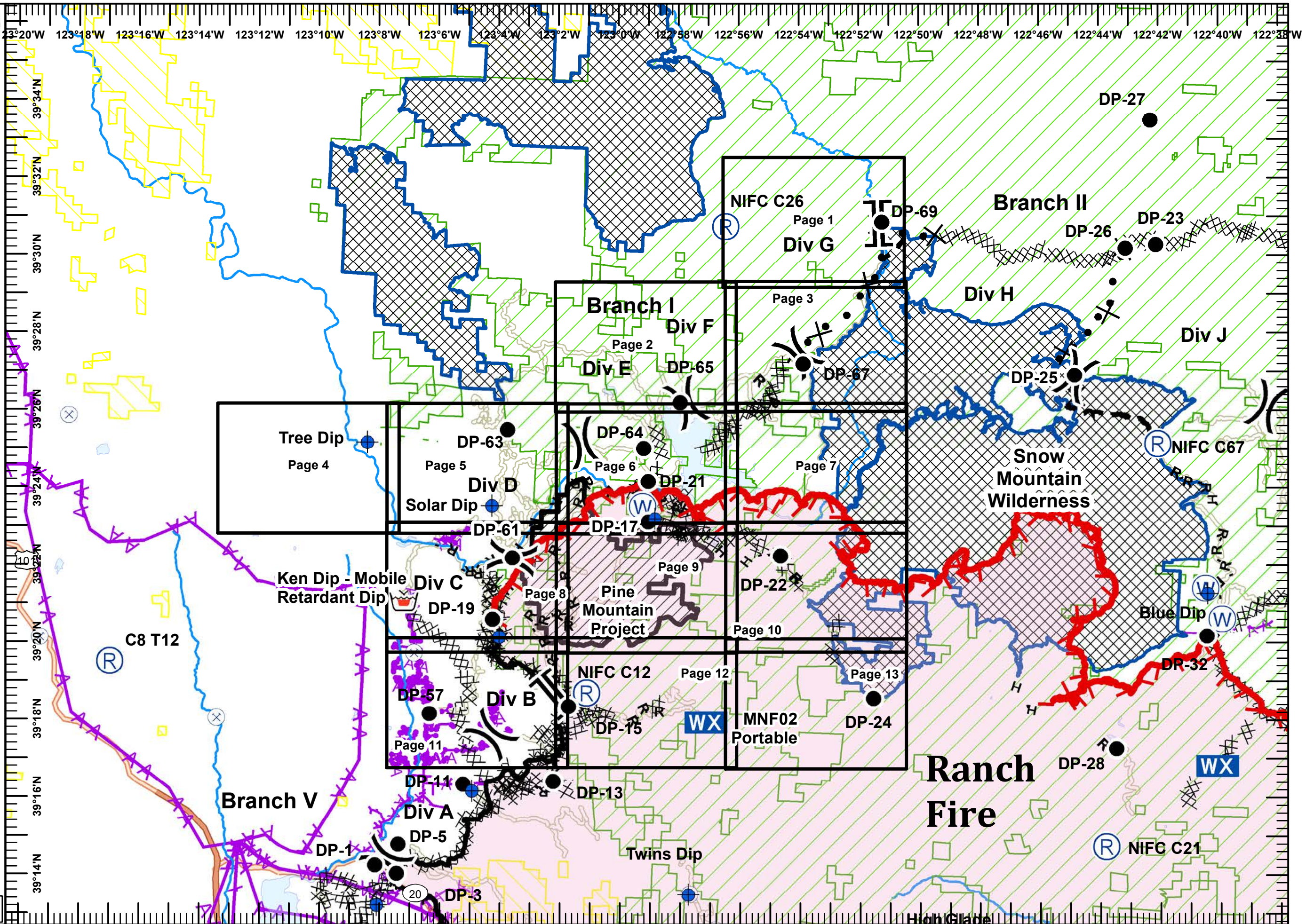




IAP Grid Ranch Fire

Branch I
Mendocino Complex
CA-MEU 008674
0700-0700
August 15, 2018

- Division Break
 - Branch Break
 - Dip Site
 - Drop Point
 - WX Mobile Weather Unit
 - Repeater
 - Retardant/Mud Pit
 - Water Source
 - Uncontrolled Fire Edge
 - Completed Line
 - Completed Dozer Line
 - Completed Hand Line
 - Road as Completed Line
 - Proposed Dozer Line
 - Planned Fire Line
 - Aerial Hazard
 - Bureau of Land Management
 - USDA Forest Service
 - Active Mines (2010)
- Miles
0 1 2
- 1:170,000
- IMT2 GIS
8/15/2018
00:34 hrs

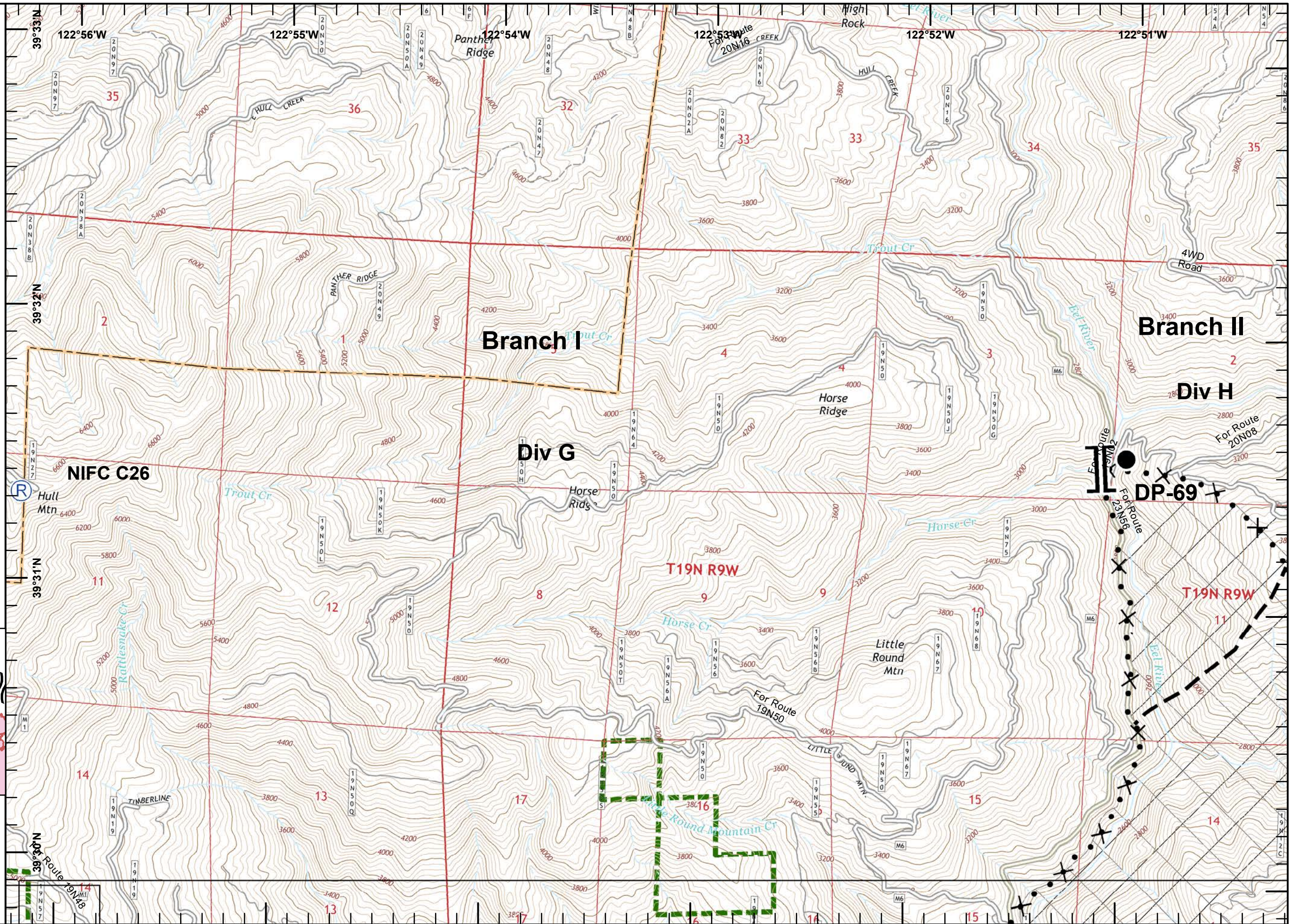
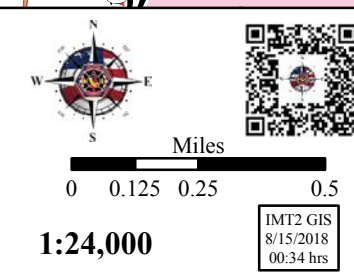
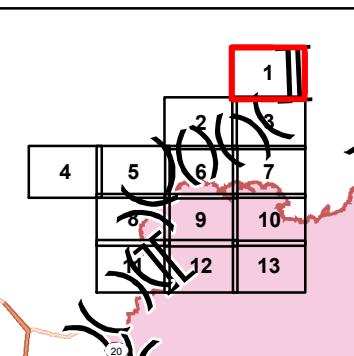




IAP Ranch Fire
Branch I
Mendocino Complex
CA-MEU 008674

0700 - 0700
August 15, 2018
Page 1 of 13

- Branch Break
- Drop Point
- Repeater
- Proposed Dozer Line
- Planned Fire Line
- Wilderness Area
- USDA Forest Service

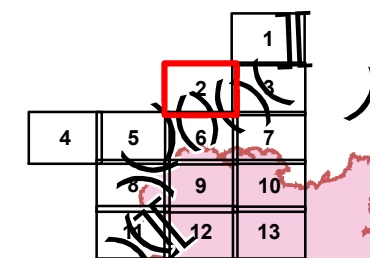




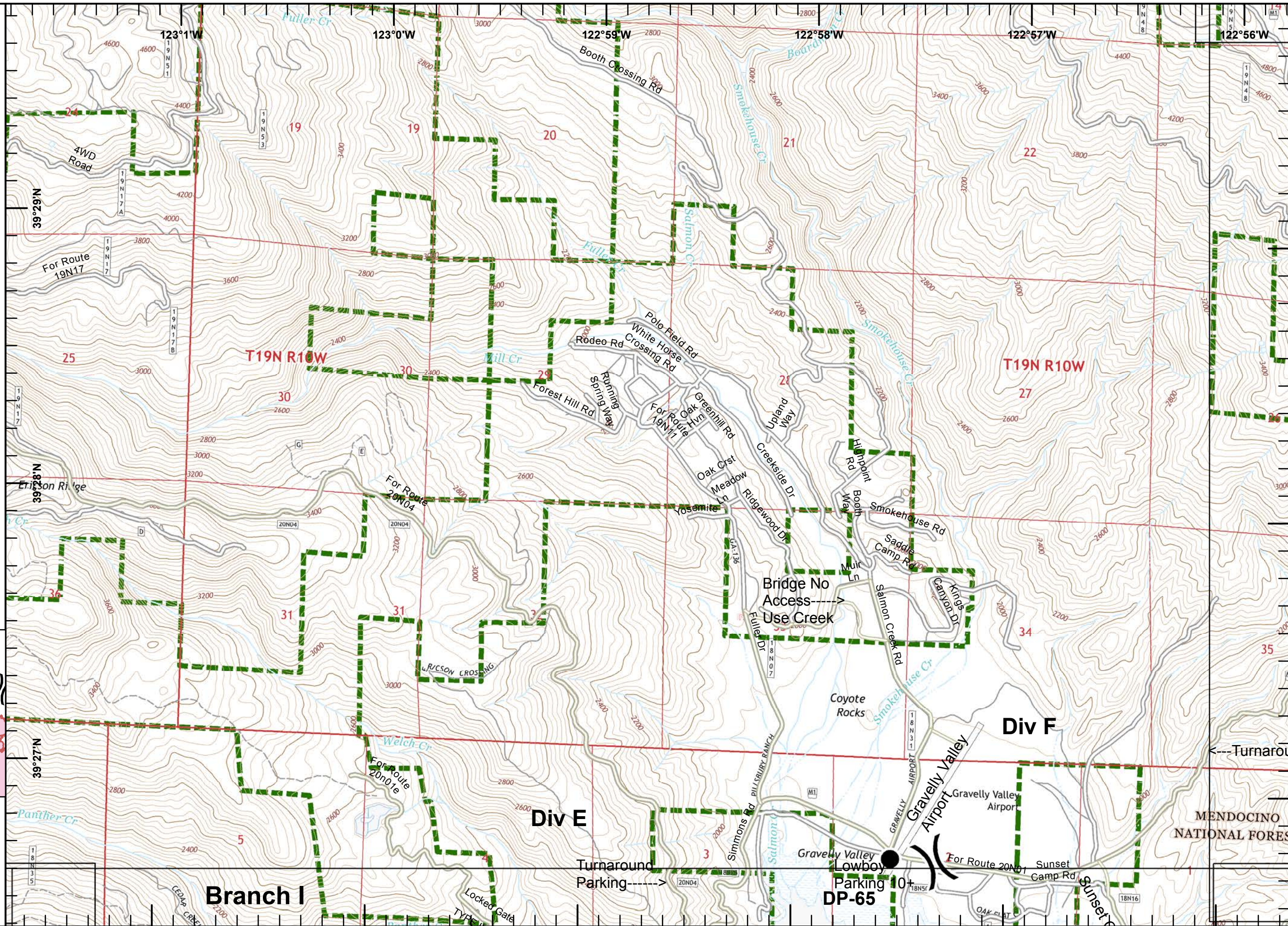
IAP Ranch Fire
Branch I
Mendocino Complex
CA-MEU 008674

0700 - 0700
 August 15, 2018
 Page 2 of 13

- Division Break
- Drop Point
- USDA Forest Service



1:24,000
 IMT2 GIS
 8/15/2018
 00:35 hrs

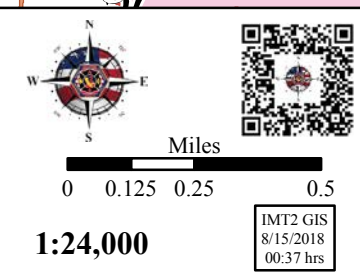
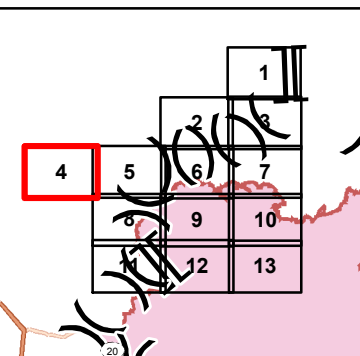




IAP Ranch Fire
Branch I
Mendocino Complex
CA-MEU 008674

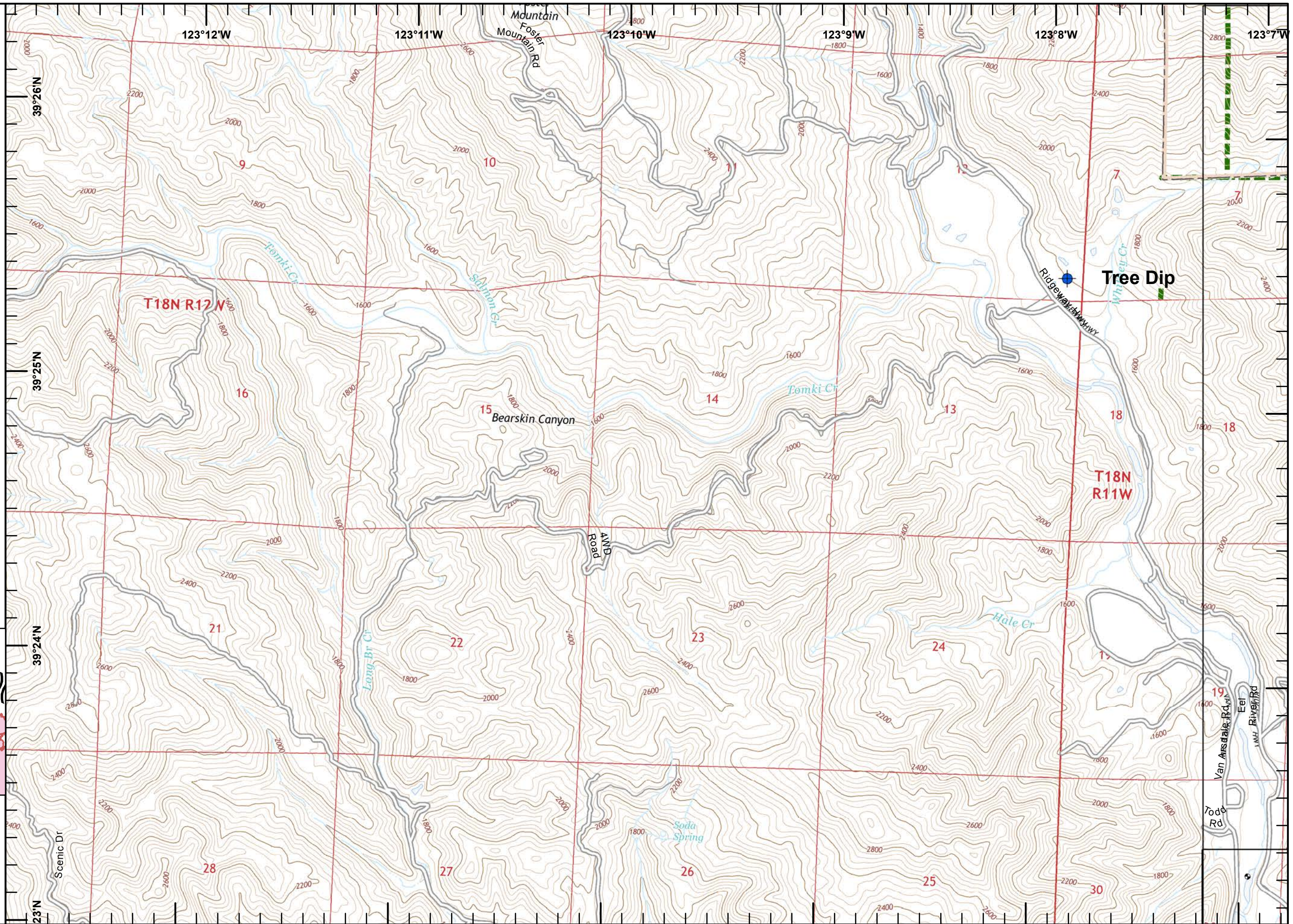
0700 - 0700
August 15, 2018
Page 4 of 13

Dip Site
 USDA Forest Service



1:24,000

IMT2 GIS
8/15/2018
00:37 hrs

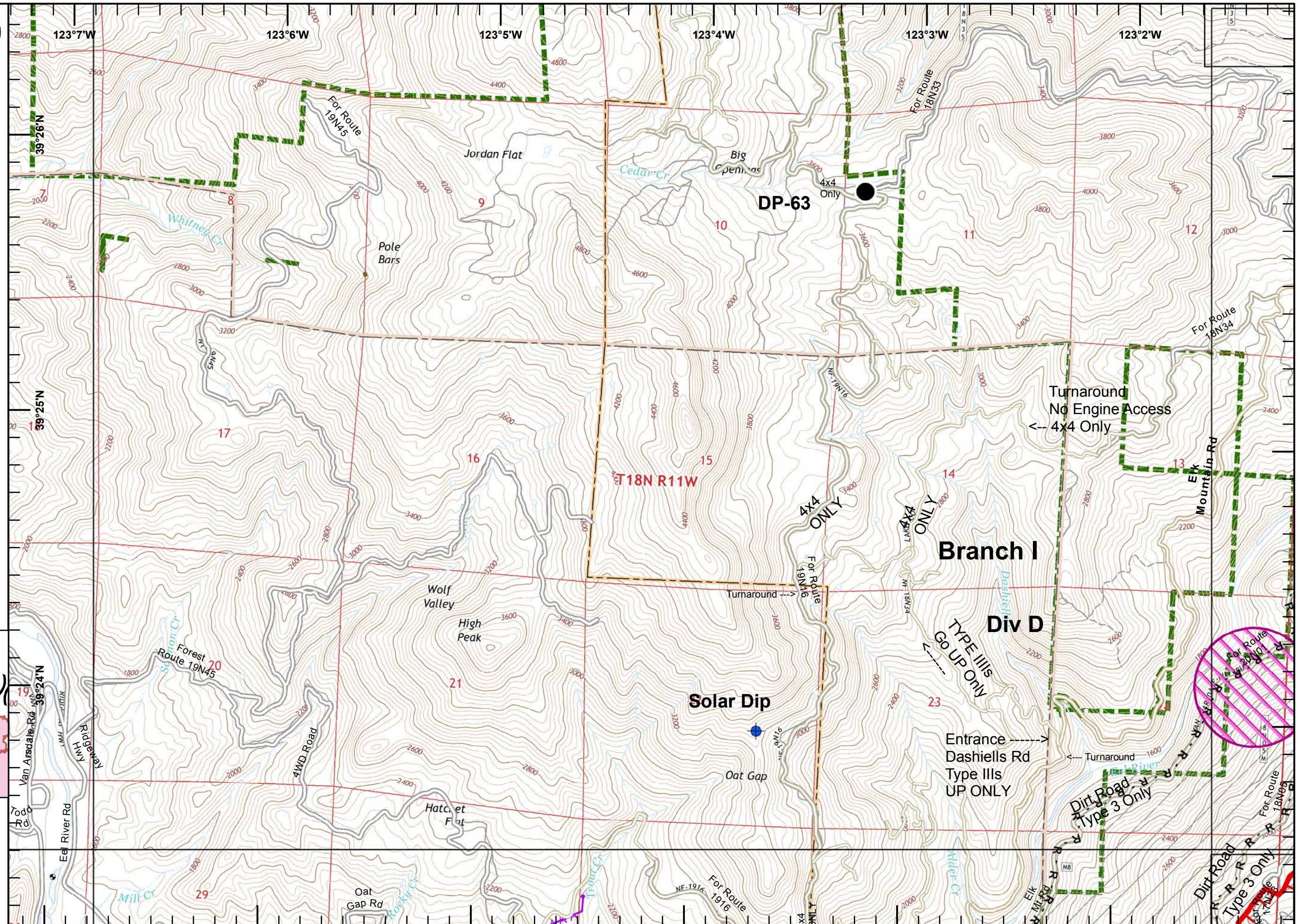
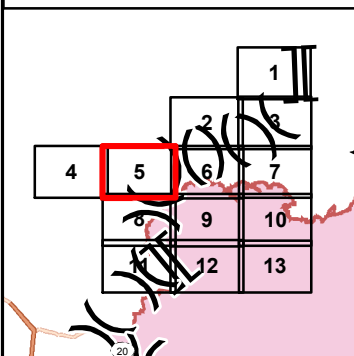




IAP Ranch Fire
Branch I
Mendocino Complex
CA-MEU 008674

0700 - 0700
 August 15, 2018
 Page 5 of 13

- Dip Site
- Drop Point
- Uncontrolled Fire Edge
- Road as Completed Line
- Pine Mountain Project
- USDA Forest Service
- No Firing Area
- Aerial Hazard

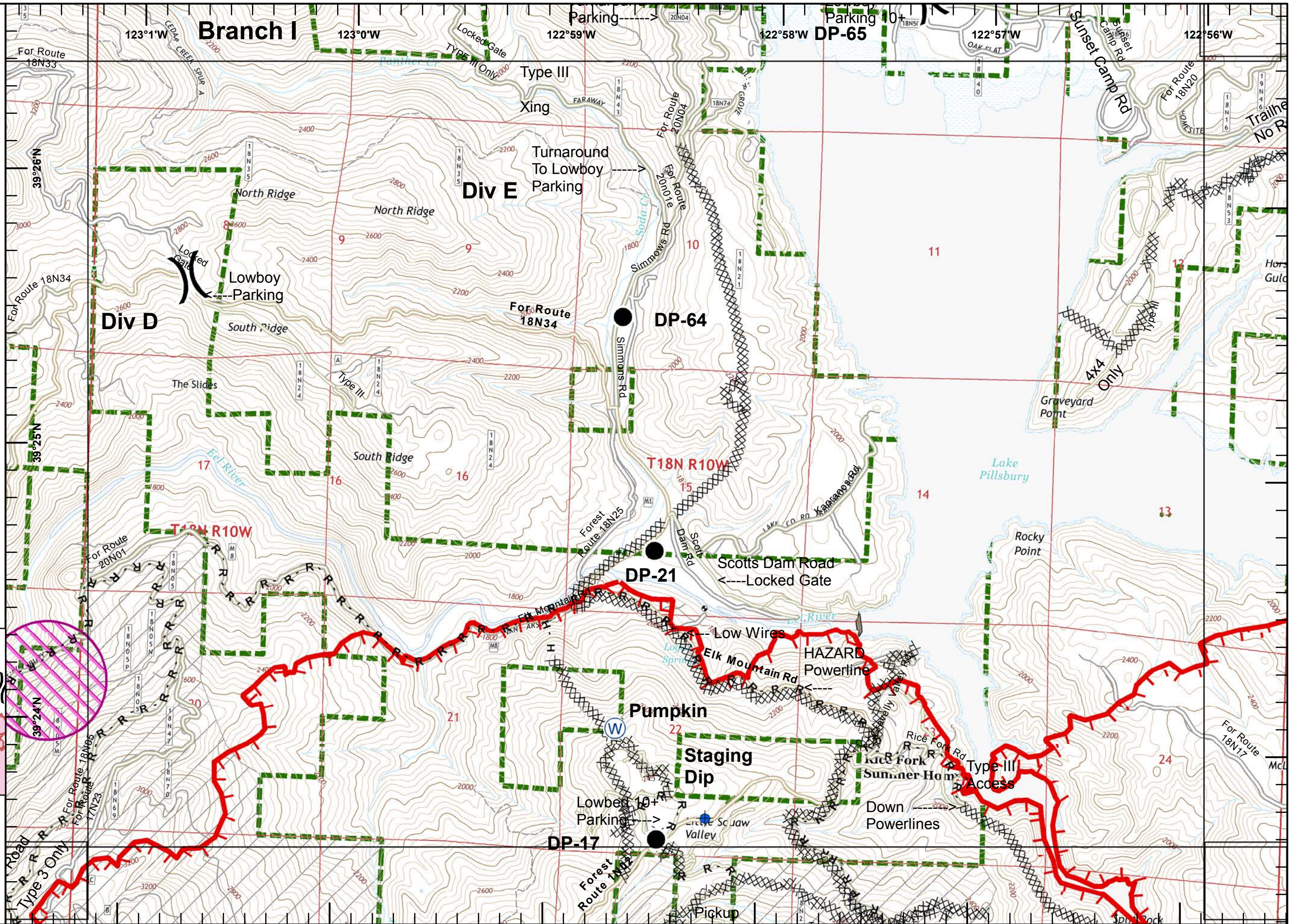
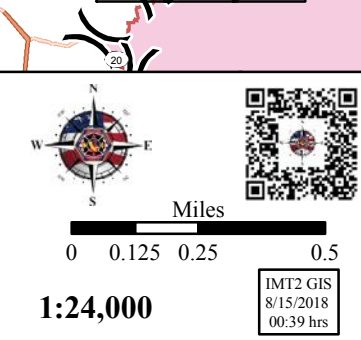
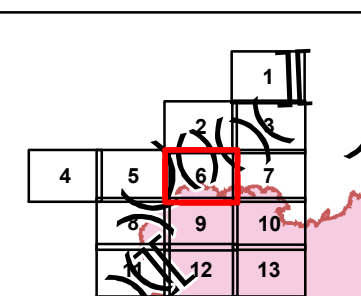




IAP Ranch Fire
Branch I
Mendocino Complex
CA-MEU 008674






0700 - 0700
 August 15, 2018
 Page 6 of 13

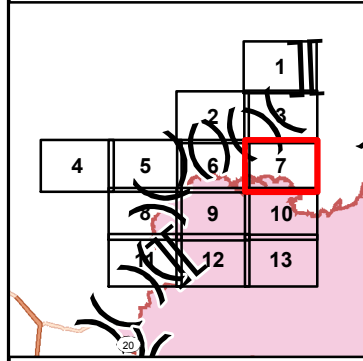
- Division Break
- Dip Site
- Drop Point
- Water Source
- Uncontrolled Fire Edge
- Completed Dozer Line
- Completed Hand Line
- Road as Completed Line
- Pine Mountain Project
- USDA Forest Service
- No Firing Area



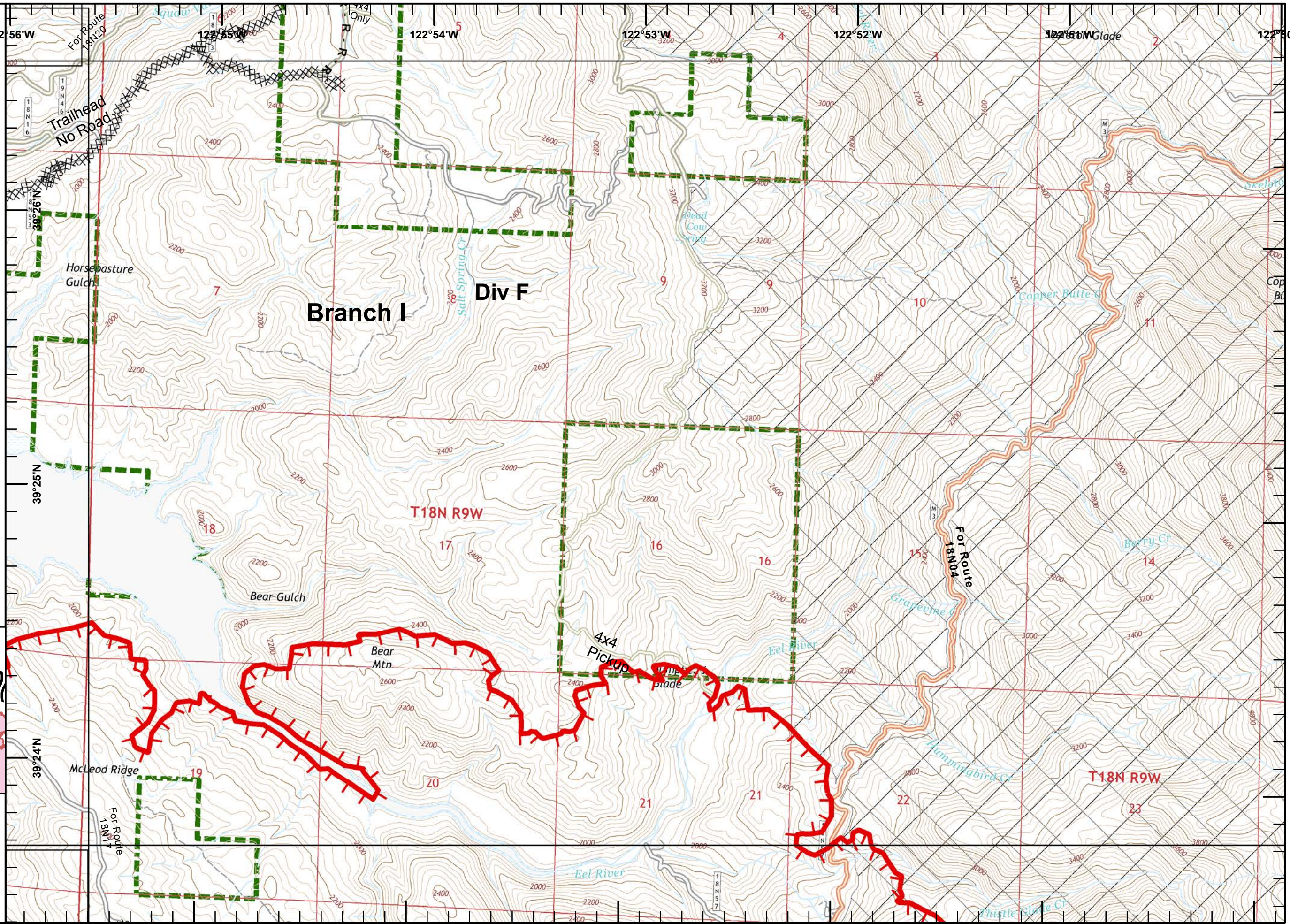


IAP Ranch Fire
Branch I
Mendocino Complex
CA-MEU 008674
 0700 - 0700
 August 15, 2018
 Page 7 of 13

-  Uncontrolled Fire Edge
-  Completed Dozer Line
-  Road as Completed Line
-  Wilderness Area
-  USDA Forest Service




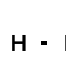





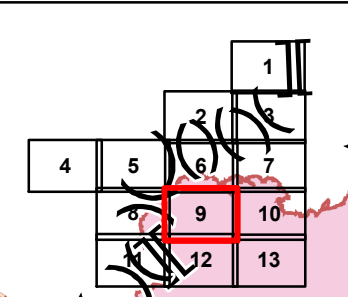
1:24,000
 IMT2 GIS
 8/15/2018
 00:40 hrs





IAP Ranch Fire
 Branch I
 Mendocino Complex
 CA-MEU 008674
 0700 - 0700
 August 15, 2018
 Page 9 of 13

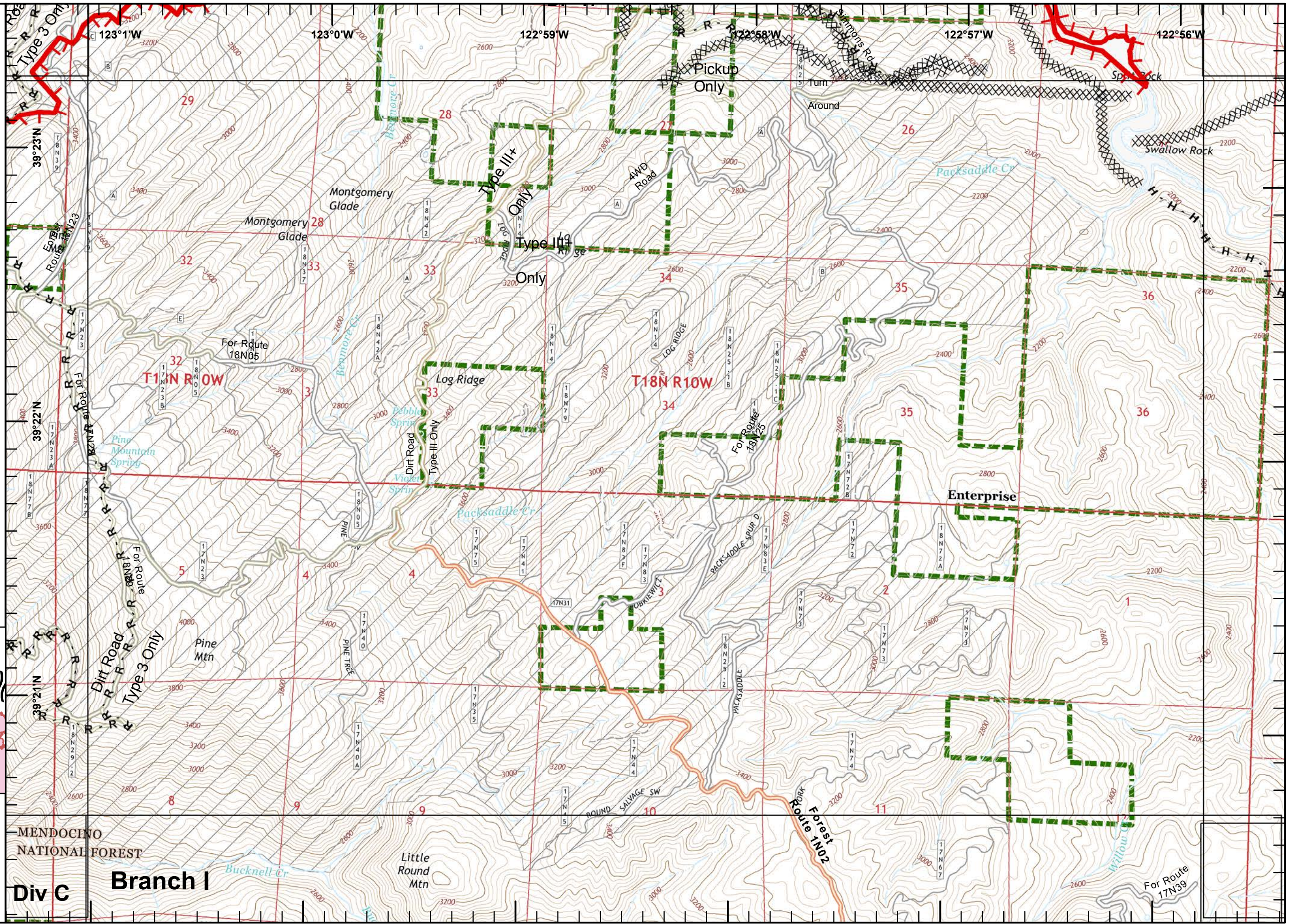
-  Drop Point
-  Uncontrolled Fire Edge
-  Completed Dozer Line
-  Completed Hand Line
-  Road as Completed Line
-  Pine Mountain Project
-  USDA Forest Service



Miles
0 0.125 0.25 0.5

1:24,000

IMT2 GIS
8/15/2018
00:42 hrs






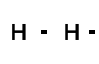

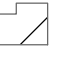

MENDOCINO NATIONAL FOREST

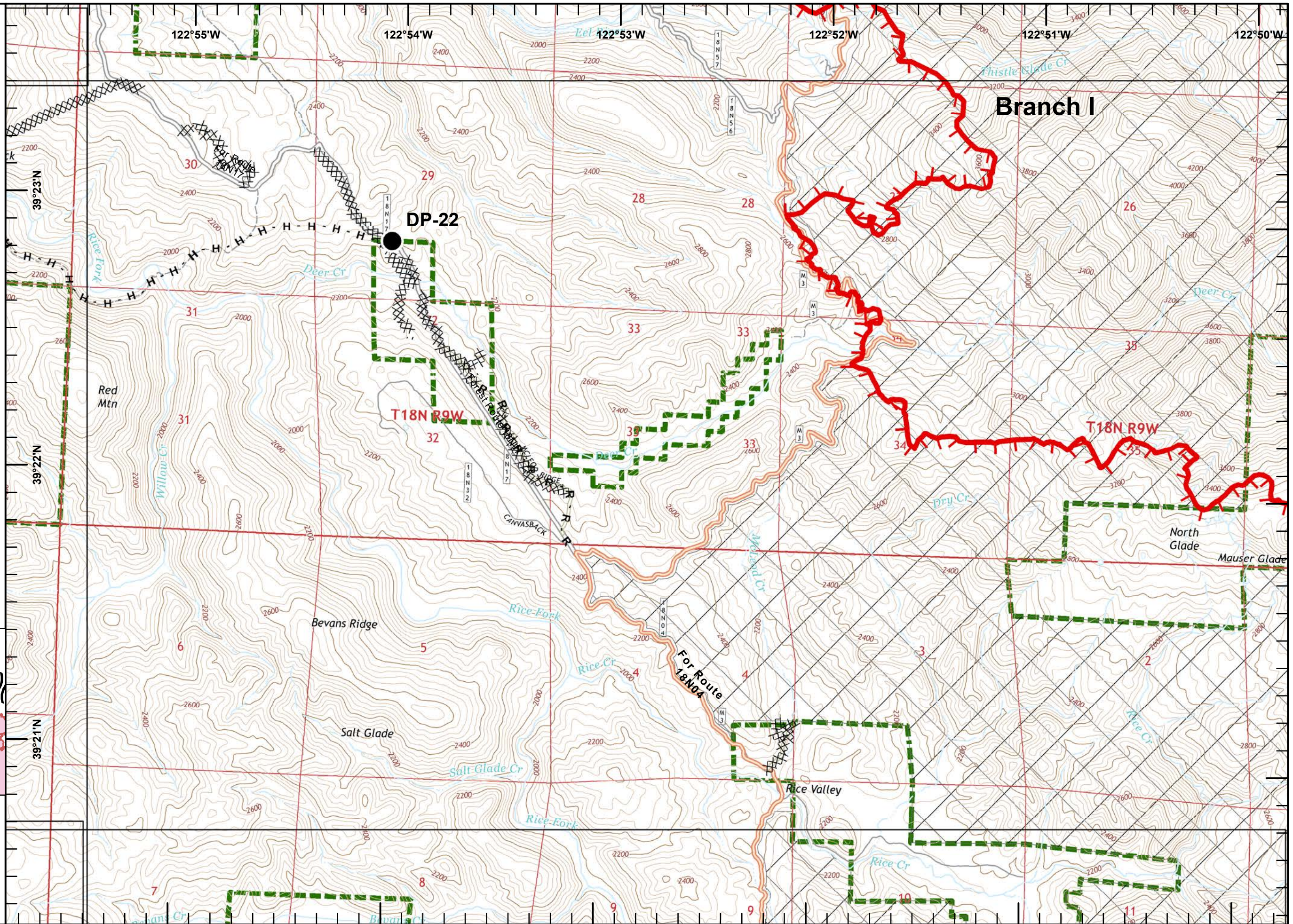
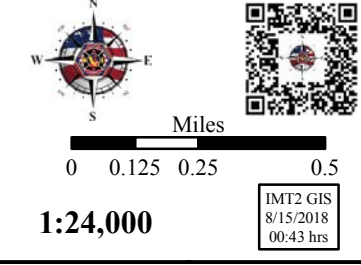
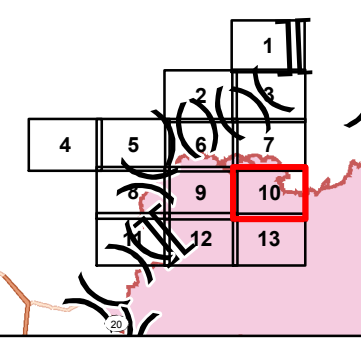
Div C **Branch I**

For Route 17N39



IAP Ranch Fire
Branch I
Mendocino Complex
CA-MEU 008674
 0700 - 0700
 August 15, 2018
 Page 10 of 13

-  Drop Point
-  Uncontrolled Fire Edge
-  Completed Dozer Line
-  Completed Hand Line
-  Road as Completed Line
-  Wilderness Area
-  USDA Forest Service

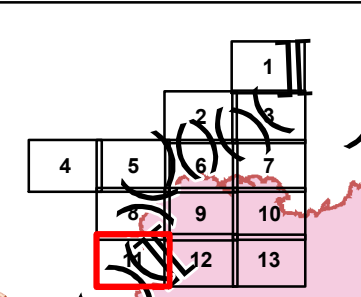




IAP Ranch Fire
Branch I
Mendocino Complex
CA-MEU 008674

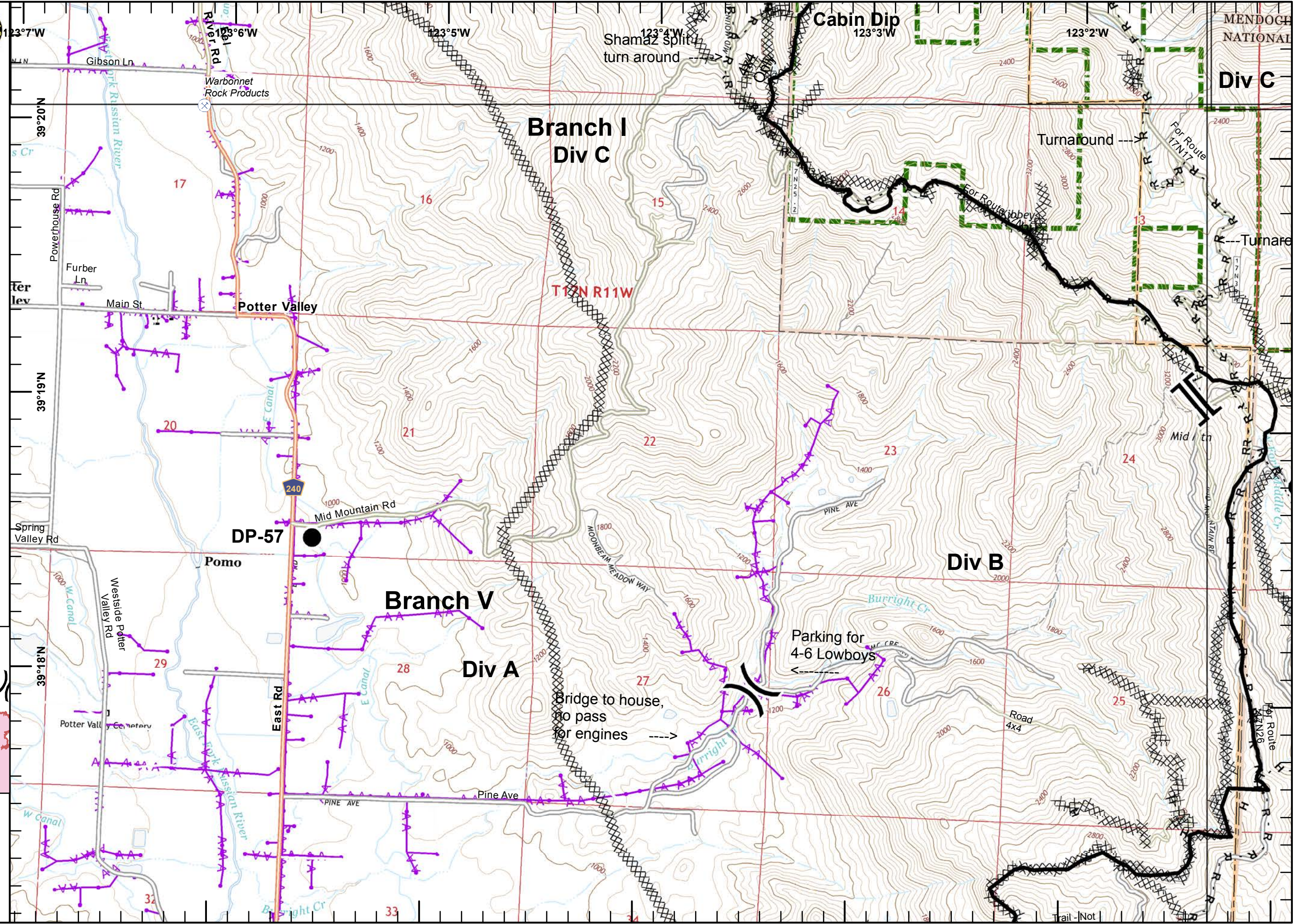
0700 - 0700
 August 15, 2018
 Page 11 of 13

- Division Break
- Branch Break
- Dip Site
- Drop Point
- Completed Line
- Completed Dozer Line
- Completed Hand Line
- Road as Completed Line
- Pine Mountain Project
- USDA Forest Service
- Aerial Hazard



IMT2 GIS
 8/15/2018
 00:44 hrs

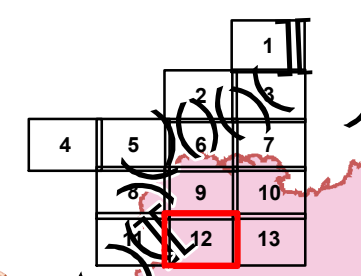
1:24,000





IAP Ranch Fire
Branch I
Mendocino Complex
CA-MEU 008674
 0700 - 0700
 August 15, 2018
 Page 12 of 13

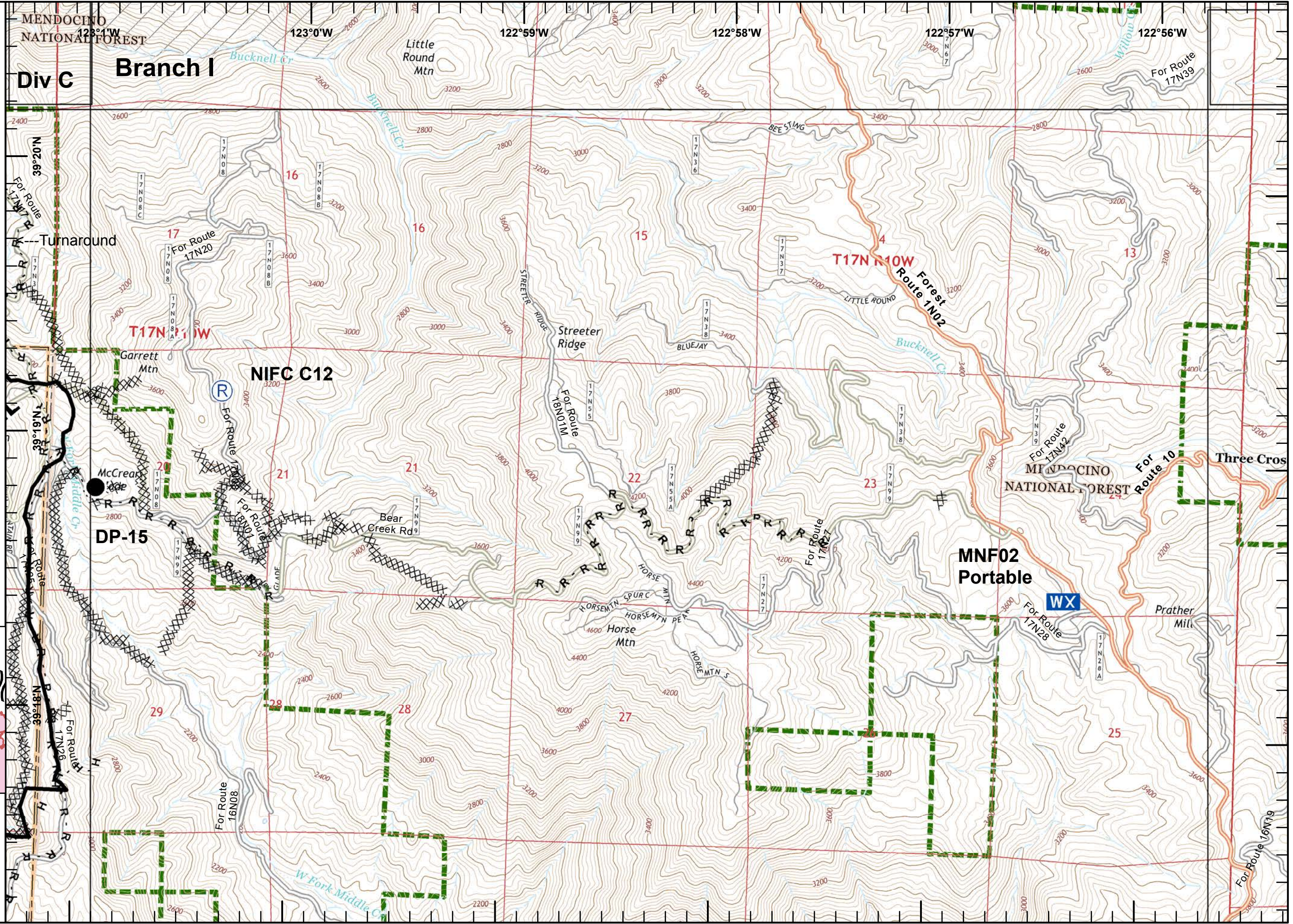
- Branch Break
- Drop Point
- Mobile Weather Unit
- Repeater
- Completed Line
- Completed Dozer Line
- Completed Hand Line
- Road as Completed Line
- Pine Mountain Project
- USDA Forest Service



Miles
 0 0.125 0.25 0.5

1:24,000





IMT2 GIS
 8/15/2018
 00:45 hrs

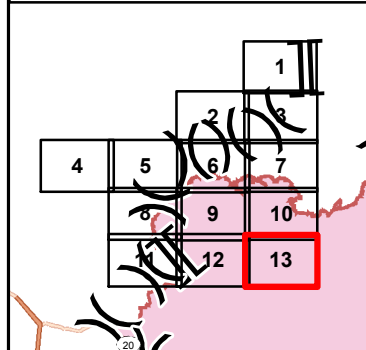




IAP Ranch Fire
Branch I
Mendocino Complex
CA-MEU 008674

0700 - 0700
 August 15, 2018
 Page 13 of 13

-  Drop Point
-  Completed Dozer Line
-  Wilderness Area
-  USDA Forest Service



1:24,000

IMT2 GIS
 8/15/2018
 00:46 hrs

