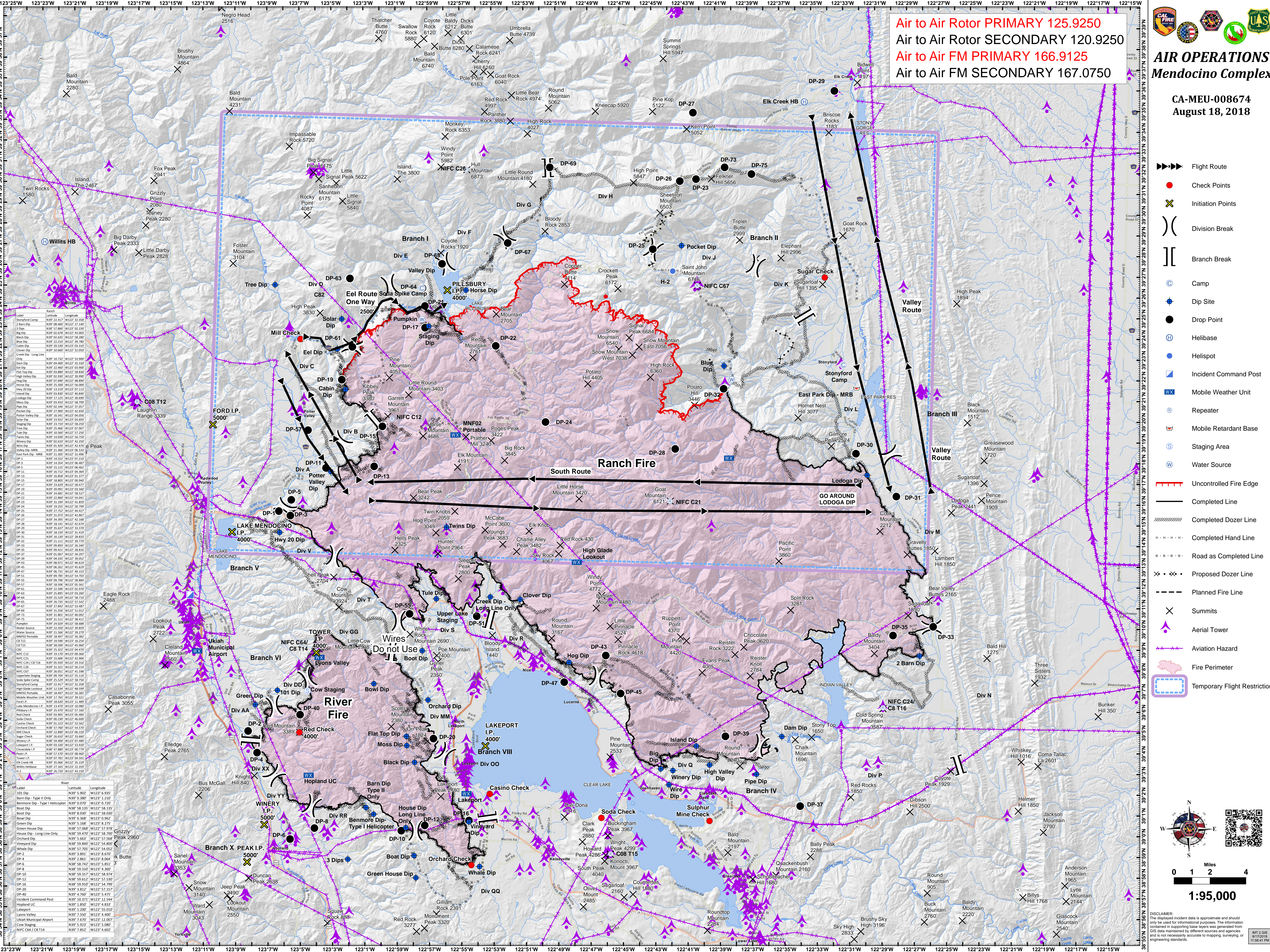


Air to Air Rotor PRIMARY 125.9250
Air to Air Rotor SECONDARY 120.9250
Air to Air FM PRIMARY 166.9125
Air to Air FM SECONDARY 167.0750



AIR OPERATIONS
Mendocino Complex

CA-MEU-008674
 August 18, 2018



Label	Ranch	Latitude	Longitude
Stonyford Camp	N39° 22.417' W122° 53.358'		
3 Barn Dip	N39° 08.460' W122° 51.348'		
Big Dip	N39° 02.678' W122° 49.002'		
Black Dip	N39° 02.881' W122° 48.282'		
Blue Dip	N39° 22.210' W122° 39.780'		
Cabin Dip	N39° 23.347' W122° 03.367'		
Chowder Dip	N39° 10.660' W122° 52.050'		
Creek Dip - Long Line	N39° 10.737' W122° 53.900'		
Dam Dip	N39° 04.400' W122° 35.500'		
Div Dip	N39° 23.460' W122° 03.800'		
Flat Top Dip	N39° 03.880' W122° 58.830'		
High Valley Dip	N39° 02.990' W122° 39.990'		
Hog Dip	N39° 07.400' W122° 48.400'		
Horse Dip	N39° 25.500' W122° 56.000'		
How Dip	N39° 13.510' W122° 07.510'		
Island Dip	N39° 03.830' W122° 40.830'		
Lodge Dip	N39° 17.225' W122° 30.690'		
Mesa Dip	N39° 04.817' W122° 42.600'		
Pipe Dip	N39° 02.540' W122° 37.050'		
Potter Valley Dip	N39° 04.817' W122° 42.600'		
Potter Valley Dip	N39° 15.541' W122° 04.060'		
Solar Dip	N39° 23.922' W122° 03.690'		
Staging Dip	N39° 23.922' W122° 03.690'		
Tree Dip	N39° 25.466' W122° 07.960'		
Tran Dip	N39° 03.860' W122° 57.260'		
Wine Dip	N39° 14.030' W122° 56.700'		
Winery Dip	N39° 02.610' W122° 42.200'		
Wire Dip	N39° 21.360' W122° 05.310'		
Valley Dip - M8A	N39° 21.360' W122° 05.310'		
East Park Dip - M8B	N39° 14.550' W122° 07.210'		
DP-1	N39° 14.550' W122° 07.210'		
DP-2	N39° 14.550' W122° 07.210'		
DP-3	N39° 14.550' W122° 07.210'		
DP-4	N39° 14.550' W122° 07.210'		
DP-5	N39° 14.550' W122° 07.210'		
DP-6	N39° 14.550' W122° 07.210'		
DP-7	N39° 14.550' W122° 07.210'		
DP-8	N39° 14.550' W122° 07.210'		
DP-9	N39° 14.550' W122° 07.210'		
DP-10	N39° 14.550' W122° 07.210'		
DP-11	N39° 14.550' W122° 07.210'		
DP-12	N39° 14.550' W122° 07.210'		
DP-13	N39° 14.550' W122° 07.210'		
DP-14	N39° 14.550' W122° 07.210'		
DP-15	N39° 14.550' W122° 07.210'		
DP-16	N39° 14.550' W122° 07.210'		
DP-17	N39° 14.550' W122° 07.210'		
DP-18	N39° 14.550' W122° 07.210'		
DP-19	N39° 14.550' W122° 07.210'		
DP-20	N39° 14.550' W122° 07.210'		
DP-21	N39° 14.550' W122° 07.210'		
DP-22	N39° 14.550' W122° 07.210'		
DP-23	N39° 14.550' W122° 07.210'		
DP-24	N39° 14.550' W122° 07.210'		
DP-25	N39° 14.550' W122° 07.210'		
DP-26	N39° 14.550' W122° 07.210'		
DP-27	N39° 14.550' W122° 07.210'		
DP-28	N39° 14.550' W122° 07.210'		
DP-29	N39° 14.550' W122° 07.210'		
DP-30	N39° 14.550' W122° 07.210'		
DP-31	N39° 14.550' W122° 07.210'		
DP-32	N39° 14.550' W122° 07.210'		
DP-33	N39° 14.550' W122° 07.210'		
DP-34	N39° 14.550' W122° 07.210'		
DP-35	N39° 14.550' W122° 07.210'		
DP-36	N39° 14.550' W122° 07.210'		
DP-37	N39° 14.550' W122° 07.210'		
DP-38	N39° 14.550' W122° 07.210'		
DP-39	N39° 14.550' W122° 07.210'		
DP-40	N39° 14.550' W122° 07.210'		
DP-41	N39° 14.550' W122° 07.210'		
DP-42	N39° 14.550' W122° 07.210'		
DP-43	N39° 14.550' W122° 07.210'		
DP-44	N39° 14.550' W122° 07.210'		
DP-45	N39° 14.550' W122° 07.210'		
DP-46	N39° 14.550' W122° 07.210'		
DP-47	N39° 14.550' W122° 07.210'		
DP-48	N39° 14.550' W122° 07.210'		
DP-49	N39° 14.550' W122° 07.210'		
DP-50	N39° 14.550' W122° 07.210'		
DP-51	N39° 14.550' W122° 07.210'		
DP-52	N39° 14.550' W122° 07.210'		
DP-53	N39° 14.550' W122° 07.210'		
DP-54	N39° 14.550' W122° 07.210'		
DP-55	N39° 14.550' W122° 07.210'		
DP-56	N39° 14.550' W122° 07.210'		
DP-57	N39° 14.550' W122° 07.210'		
DP-58	N39° 14.550' W122° 07.210'		
DP-59	N39° 14.550' W122° 07.210'		
DP-60	N39° 14.550' W122° 07.210'		
DP-61	N39° 14.550' W122° 07.210'		
DP-62	N39° 14.550' W122° 07.210'		
DP-63	N39° 14.550' W122° 07.210'		
DP-64	N39° 14.550' W122° 07.210'		
DP-65	N39° 14.550' W122° 07.210'		
DP-66	N39° 14.550' W122° 07.210'		
DP-67	N39° 14.550' W122° 07.210'		
DP-68	N39° 14.550' W122° 07.210'		
DP-69	N39° 14.550' W122° 07.210'		
DP-70	N39° 14.550' W122° 07.210'		
DP-71	N39° 14.550' W122° 07.210'		
DP-72	N39° 14.550' W122° 07.210'		
DP-73	N39° 14.550' W122° 07.210'		
DP-74	N39° 14.550' W122° 07.210'		
DP-75	N39° 14.550' W122° 07.210'		
DP-76	N39° 14.550' W122° 07.210'		
DP-77	N39° 14.550' W122° 07.210'		
DP-78	N39° 14.550' W122° 07.210'		
DP-79	N39° 14.550' W122° 07.210'		
DP-80	N39° 14.550' W122° 07.210'		
DP-81	N39° 14.550' W122° 07.210'		
DP-82	N39° 14.550' W122° 07.210'		
DP-83	N39° 14.550' W122° 07.210'		
DP-84	N39° 14.550' W122° 07.210'		
DP-85	N39° 14.550' W122° 07.210'		
DP-86	N39° 14.550' W122° 07.210'		
DP-87	N39° 14.550' W122° 07.210'		
DP-88	N39° 14.550' W122° 07.210'		
DP-89	N39° 14.550' W122° 07.210'		
DP-90	N39° 14.550' W122° 07.210'		
DP-91	N39° 14.550' W122° 07.210'		
DP-92	N39° 14.550' W122° 07.210'		
DP-93	N39° 14.550' W122° 07.210'		
DP-94	N39° 14.550' W122° 07.210'		
DP-95	N39° 14.550' W122° 07.210'		
DP-96	N39° 14.550' W122° 07.210'		
DP-97	N39° 14.550' W122° 07.210'		
DP-98	N39° 14.550' W122° 07.210'		
DP-99	N39° 14.550' W122° 07.210'		
DP-100	N39° 14.550' W122° 07.210'		

- ▶▶▶▶ Flight Route
- Check Points
- ✕ Initiation Points
-) (Division Break
- [] Branch Break
- ⊙ Camp
- ⊕ Dip Site
- Drop Point
- ⊕ Helibase
- ⊕ Helispot
- ⊕ Incident Command Post
- WX Mobile Weather Unit
- ⊕ Repeater
- ⊕ Mobile Retardant Base
- ⊕ Staging Area
- ⊕ Water Source
- Uncontrolled Fire Edge
- Completed Line
- Completed Dozer Line
- Completed Hand Line
- Road as Completed Line
- Proposed Dozer Line
- Planned Fire Line
- ✕ Summits
- ⊕ Aerial Tower
- ⊕ Aviation Hazard
- ⊕ Fire Perimeter
- ⊕ Temporary Flight Restriction

0 1 2 4 Miles

1:95,000

DISCLAIMER: The displayed incident data is approximate and should only be used for informational purposes. The information contained in supporting base layers was generated from GIS data maintained by different sources and agencies and is not necessarily accurate to mapping, surveying, or engineering standards.

MT 2.018
8/17/2018
11:58:41 PM