

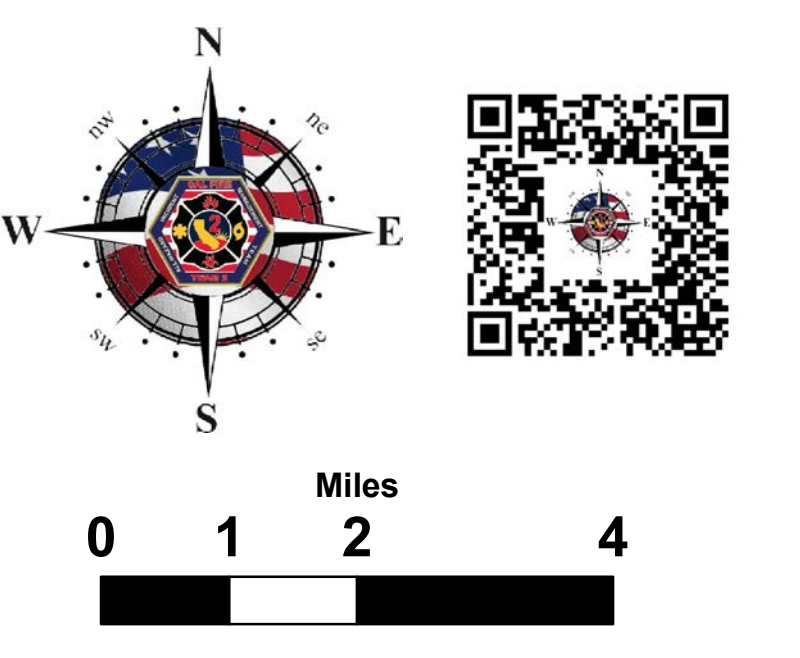
Air to Air Rotor PRIMARY 125.9250
Air to Air Rotor SECONDARY 120.9250
Air to Air FM PRIMARY 166.9125
Air to Air FM SECONDARY 167.0750



AIR OPERATIONS
Mendocino Complex

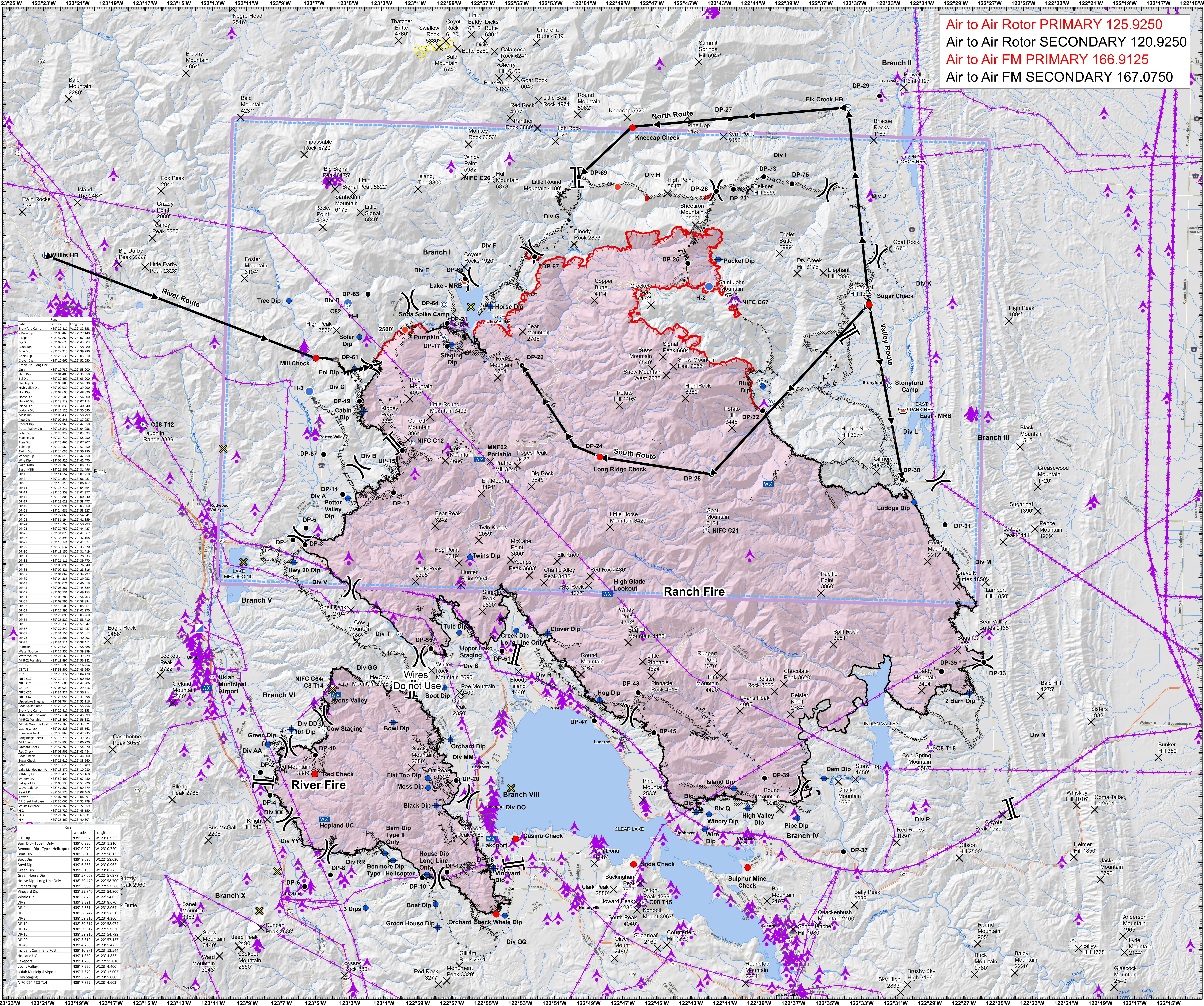
CA-MEU-008674
August 21, 2018

- Flight Route
- Check Points
- Initiation Points
- Helibase
- Division Break
- Branch Break
- Camp
- Dip Site
- Drop Point
- Helispot
- Hot Spot
- Incident Command Post
- Mobile Weather Unit
- Repeater
- Mobile Retardant Base
- Staging Area
- Water Source
- Uncontrolled Fire Edge
- Completed Line
- Completed Dozer Line
- Completed Hand Line
- Road as Completed Line
- Proposed Dozer Line
- Planned Fire Line
- Summits
- Aerial Tower
- Aviation Hazard
- Fire Perimeter
- Retardant Avoidance Area
- Temporary Flight Restriction



1:95,000

DISCLAIMER: The displayed incident data is approximate and should only be used for informational purposes. The information contained in this supporting base layer was generated from GIS data maintained by different sources and agencies and is not necessarily accurate to mapping, surveying, or engineering standards.



Label	Latitude	Longitude
Stonyford Camp	N39° 08.460' W122° 33.338'	
2 Barn Dip	N39° 08.460' W122° 33.338'	
Big Dip	N39° 08.460' W122° 33.338'	
Black Dip	N39° 08.460' W122° 33.338'	
Blue Dip	N39° 08.460' W122° 33.338'	
Cable Dip	N39° 08.460' W122° 33.338'	
Cloze Dip	N39° 08.460' W122° 33.338'	
Crows Dip - Long Line Only	N39° 10.660' W122° 52.050'	
Div A	N39° 04.300' W122° 35.500'	
Div B	N39° 04.300' W122° 35.500'	
Div C	N39° 04.300' W122° 35.500'	
Div D	N39° 04.300' W122° 35.500'	
Div E	N39° 04.300' W122° 35.500'	
Div F	N39° 04.300' W122° 35.500'	
Div G	N39° 04.300' W122° 35.500'	
Div H	N39° 04.300' W122° 35.500'	
Div I	N39° 04.300' W122° 35.500'	
Div J	N39° 04.300' W122° 35.500'	
Div K	N39° 04.300' W122° 35.500'	
Div L	N39° 04.300' W122° 35.500'	
Div M	N39° 04.300' W122° 35.500'	
Div N	N39° 04.300' W122° 35.500'	
Div O	N39° 04.300' W122° 35.500'	
Div P	N39° 04.300' W122° 35.500'	
Div Q	N39° 04.300' W122° 35.500'	
Div R	N39° 04.300' W122° 35.500'	
Div S	N39° 04.300' W122° 35.500'	
Div T	N39° 04.300' W122° 35.500'	
Div U	N39° 04.300' W122° 35.500'	
Div V	N39° 04.300' W122° 35.500'	
Div W	N39° 04.300' W122° 35.500'	
Div X	N39° 04.300' W122° 35.500'	
Div Y	N39° 04.300' W122° 35.500'	
Div Z	N39° 04.300' W122° 35.500'	
Incident Command Post	N39° 10.371' W122° 52.544'	
Hopland UC	N39° 1.850' W122° 5.832'	
Lakeport	N39° 1.800' W122° 55.000'	
Lyons Valley	N39° 7.550' W122° 4.400'	
Ukiah Municipal Airport	N39° 7.670' W122° 12.000'	
Cow Staging	N39° 5.937' W122° 5.980'	
NIFC C64 / C8 T14	N39° 7.852' W122° 4.602'	