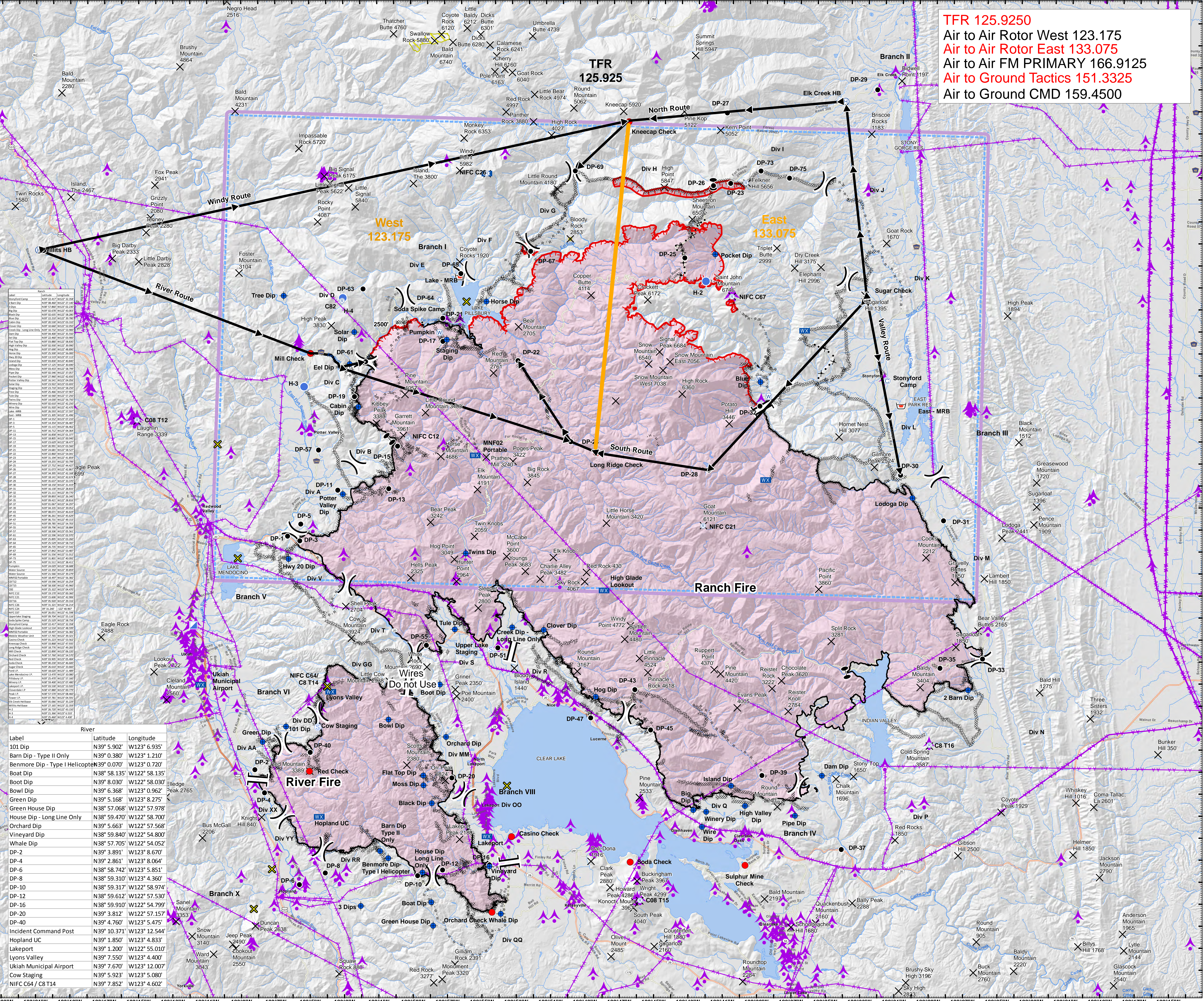




AIR OPERATIONS Mendocino Complex

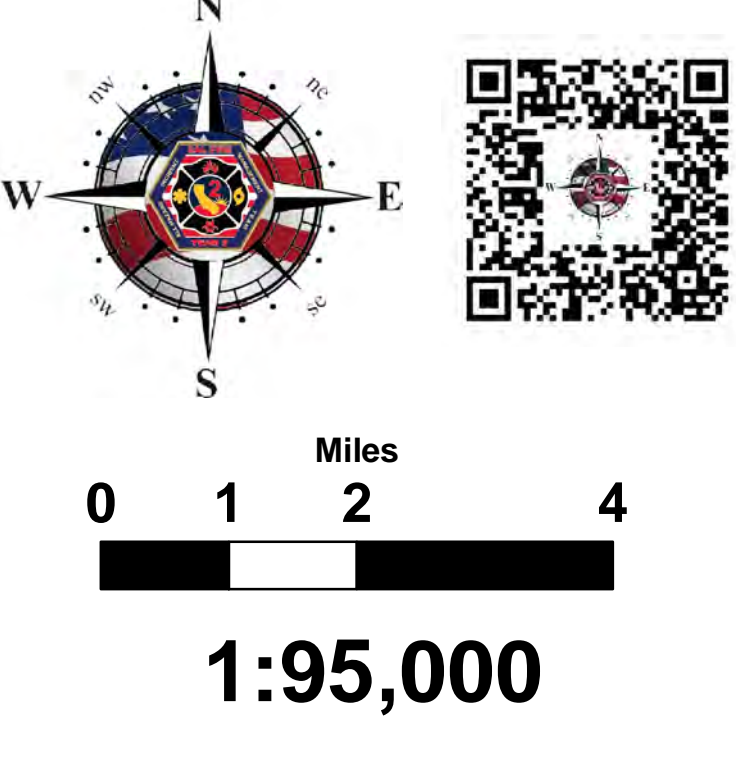
CA-MEU-008674
August 22, 2018

TFR 125.9250
Air to Air Rotor West 123.175
Air to Air Rotor East 133.075
Air to Air FM PRIMARY 166.9125
Air to Ground Tactics 151.3325
Air to Ground CMD 159.4500



Label	Latitude	Longitude
101 Dip	N39° 5.902'	W123° 6.935'
Barn Dip - Type II Only	N39° 0.380'	W123° 1.210'
Benmore Dip - Type I Helicopter	N39° 0.070'	W123° 0.720'
Boat Dip	N38° 58.135'	W122° 58.135'
Green Dip	N39° 8.030'	W122° 58.030'
Bowl Dip	N39° 6.368'	W123° 0.962'
Green Dip	N39° 5.168'	W123° 8.275'
Green House Dip	N38° 57.068'	W122° 57.978'
House Dip - Long Line Only	N38° 59.470'	W122° 58.700'
Orchard Dip	N39° 5.663'	W122° 57.568'
Vineyard Dip	N38° 59.840'	W122° 54.800'
Whale Dip	N38° 57.705'	W122° 54.052'
DP-2	N39° 3.891'	W123° 8.670'
DP-4	N39° 2.861'	W123° 8.064'
DP-6	N38° 58.742'	W123° 5.851'
DP-8	N38° 59.310'	W123° 4.360'
DP-10	N38° 59.317'	W122° 58.974'
DP-12	N38° 59.612'	W122° 57.530'
DP-16	N38° 59.910'	W122° 54.799'
DP-20	N39° 3.812'	W122° 57.157'
DP-40	N39° 4.760'	W123° 5.475'
Incident Command Post	N39° 10.371'	W123° 12.544'
Hopland UC	N39° 1.850'	W123° 4.833'
Lakeport	N39° 1.200'	W122° 55.010'
Lyons Valley	N39° 7.550'	W123° 4.400'
Ukiah Municipal Airport	N39° 7.670'	W123° 12.007'
Cow Staging	N39° 5.923'	W123° 5.080'
NIFC C64 / C8 T14	N39° 7.852'	W123° 4.602'

- Check Points
- Initiation Points
- Helibase
- Division Break
- Branch Break
- Camp
- Dip Site
- Helispot
- Incident Command Post
- Mobile Weather Unit
- Repeater
- Mobile Retardant Base
- Staging Area
- Water Source
- Zone Break
- Uncontrolled Fire Edge
- Completed Line
- Completed Dozer Line
- Completed Hand Line
- Road as Completed Line
- Proposed Dozer Line
- Planned Fire Line
- Summits
- Aerial Tower
- Fire Perimeter
- Retardant Avoidance Area
- Temporary Flight Restriction



DISCLAIMER: The displayed incident data is approximate and should only be used for informational purposes. The information contained in supporting base layers was generated from GIS data maintained by different sources and agencies and is not necessarily accurate to mapping, surveying, or engineering standards.

MT 3.08
8/21/2018
10:49:28 PM