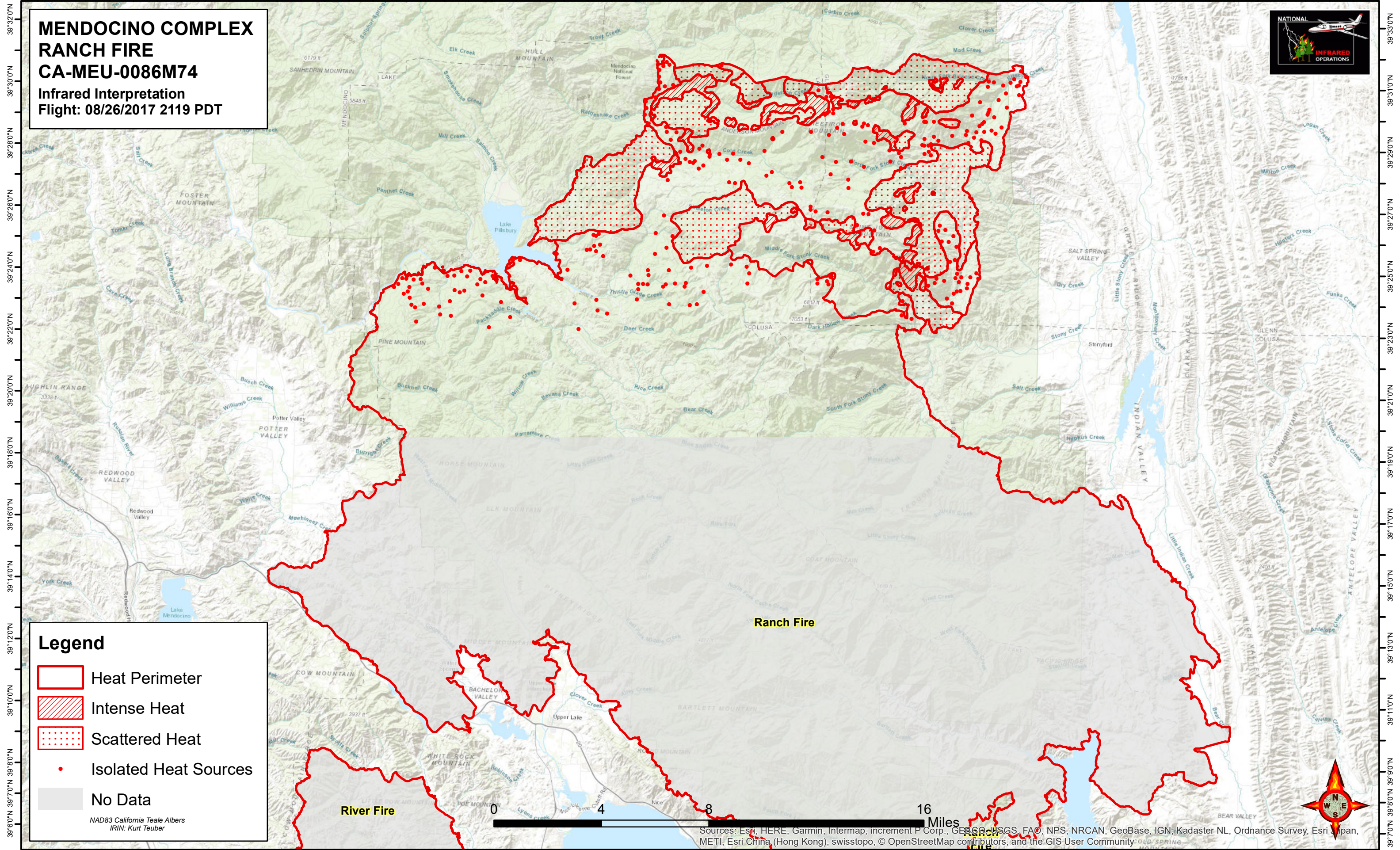


123°17'0"W 123°15'0"W 123°13'0"W 123°11'0"W 123°9'0"W 123°7'0"W 123°5'0"W 123°3'0"W 123°1'0"W 122°59'0"W 122°57'0"W 122°55'0"W 122°53'0"W 122°51'0"W 122°49'0"W 122°47'0"W 122°45'0"W 122°43'0"W 122°41'0"W 122°39'0"W 122°37'0"W 122°35'0"W 122°33'0"W 122°31'0"W 122°29'0"W 122°27'0"W 122°25'0"W 122°23'0"W 122°21'0"W

MENDOCINO COMPLEX RANCH FIRE CA-MEU-0086M74

Infrared Interpretation
Flight: 08/26/2017 2119 PDT



Legend

- Heat Perimeter
- Intense Heat
- Scattered Heat
- Isolated Heat Sources
- No Data

NAD83 California Teale Albers
IRIN: Kurt Teuber



Sources: Esri, HERE, Garmin, Intermap, increment P Corp., GEBCO, USGS, FAO, NPS, NRCAN, GeoBase, IGN, Kadaster NL, Ordnance Survey, Esri Japan, METI, Esri China (Hong Kong), swisstopo, © OpenStreetMap contributors, and the GIS User Community

123°15'0"W 123°13'0"W 123°11'0"W 123°9'0"W 123°7'0"W 123°5'0"W 123°3'0"W 123°1'0"W 122°59'0"W 122°57'0"W 122°55'0"W 122°53'0"W 122°51'0"W 122°49'0"W 122°47'0"W 122°45'0"W 122°43'0"W 122°41'0"W 122°39'0"W 122°37'0"W 122°35'0"W 122°33'0"W 122°31'0"W 122°29'0"W 122°27'0"W 122°25'0"W 122°23'0"W 122°21'0"W