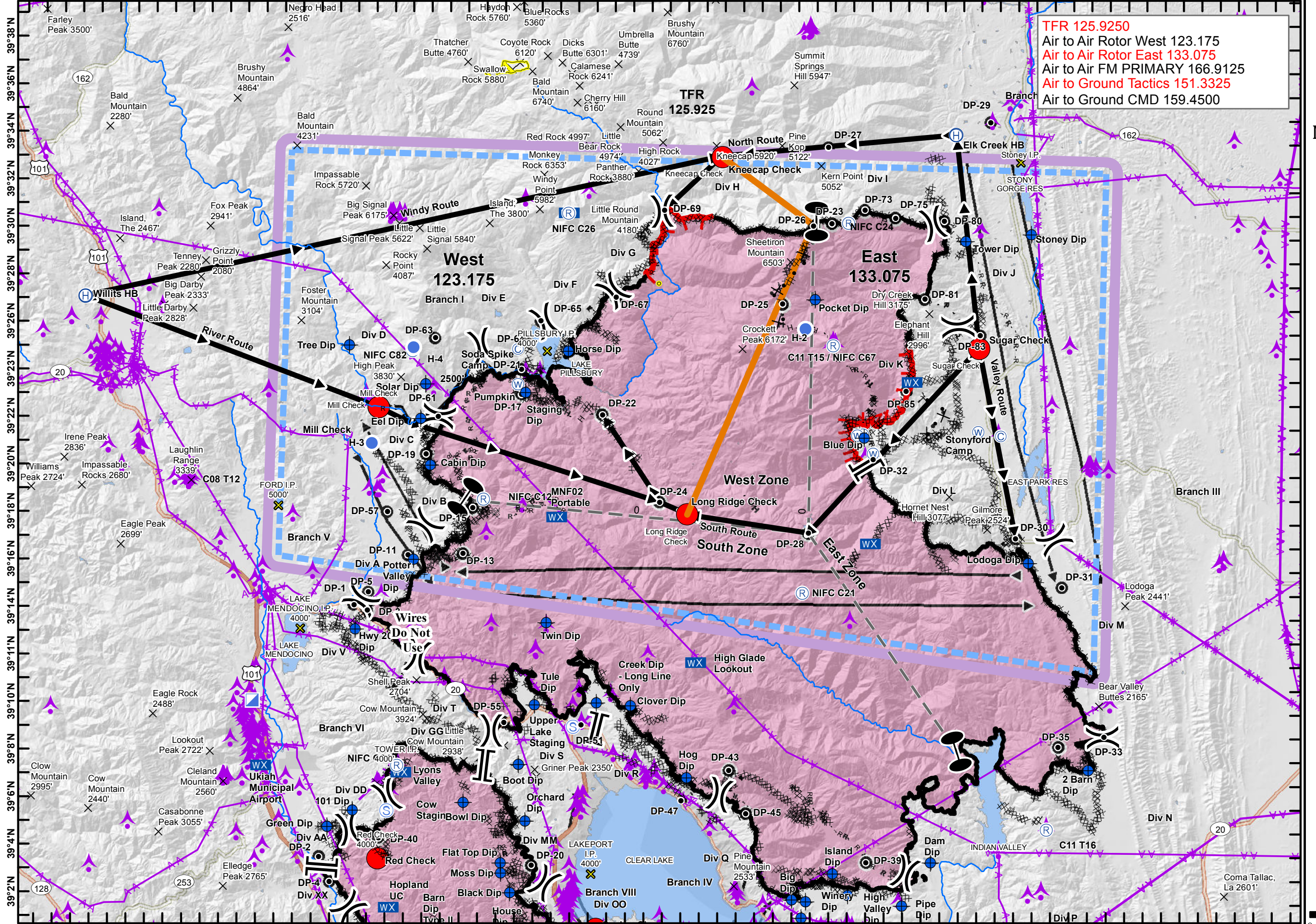


123°26'W 123°23'W 123°20'W 123°17'W 123°14'W 123°11'W 123°8'W 123°5'W 123°2'W 122°59'W 122°56'W 122°53'W 122°50'W 122°47'W 122°44'W 122°41'W 122°38'W 122°35'W 122°32'W 122°29'W 122°26'W 122°23'W 122°20'W 122°17'W



TFR 125.9250
Air to Air Rotor West 123.175
Air to Air Rotor East 133.075
Air to Air FM PRIMARY 166.9125
Air to Ground Tactics 151.3325
Air to Ground CMD 159.4500



AIR OPERATIONS

Mendocino Complex

CA-MEU-008674
August 28, 2018

- Check Points
- ✕ Initiation Points
- ▶▶ Flight Routes 20180825
- Zone Break Lines
- Retardant Avoidance Area
- ✕ Summits
- ▲ Aviation Obstacle
- ▲ Aerial Tower
- ▶▶ Flight Routes
- Camp
- Dip Site
- Drop Point
- H Helibase
- Helispot
- WX Mobile Weather Unit
- R Repeater
- S Staging Area
- W Water Source
- Uncontrolled Fire Edge
- Completed Line
- Completed Dozer Line
- Completed Hand Line
- Road as Completed Line
- Proposed Dozer Line
- East-West HELCO Line
- Rivers
- Wildfire Daily Fire Perimeter

Miles
0 1.25 2.5 5
1:283,274

IMT 3 GIS
August 27, 2018
2134
Datum: North American 1983

Ranch

Label	Latitude	Longitude	Label	Latitude	Longitude
Stonyford Camp	N39° 22.417'	W122° 32.358'	DP-47	N39° 06.731'	W122° 49.153'
2 Barn Dip	N39° 08.460'	W122° 27.140'	DP-51	N39° 09.785'	W122° 54.703'
3 Dips	N38° 57.860'	W123° 02.230'	DP-55	N39° 09.796'	W122° 58.884'
Big Dip	N39° 02.678'	W122° 43.003'	DP-57	N39° 18.506'	W123° 05.561'
Black Dip	N39° 02.635'	W122° 58.280'	DP-61	N39° 22.596'	W123° 02.970'
Blue Dip	N39° 22.210'	W122° 39.780'	DP-63	N39° 25.895'	W123° 03.260'
Cabin Dip	N39° 20.530'	W123° 03.310'	DP-64	N39° 25.529'	W122° 58.710'
Clover Dip	N39° 10.660'	W122° 52.050'	DP-65	N39° 26.735'	W122° 57.542'
Creek Dip - Long Line Only	N39° 10.732'	W122° 53.900'	DP-67	N39° 27.842'	W122° 53.487'
Dam Dip	N39° 04.400'	W122° 35.550'	DP-69	N39° 31.556'	W122° 51.012'
Eel Dip	N39° 22.460'	W123° 03.900'	DP-73	N39° 31.801'	W122° 40.092'
Flat Top Dip	N39° 03.880'	W122° 58.830'	DP-75	N39° 31.511'	W122° 38.411'
High Valley Dip	N39° 02.930'	W122° 39.990'	DP-80	N39° 31.432'	W122° 35.752'
Hog Dip	N39° 07.690'	W122° 48.890'	DP-81	N39° 28.120'	W122° 36.693'
Horse Dip	N39° 25.500'	W122° 56.000'	DP-83	N39° 26.655'	W122° 33.634'
Hwy 20 Dip	N39° 13.519'	W123° 07.113'	DP-85	N39° 24.218'	W122° 37.570'
Island Dip	N39° 03.830'	W122° 40.840'	Pumpkin	N39° 24.029'	W122° 58.688'
Lodoga Dip	N39° 17.125'	W122° 30.690'	Water Source	N39° 22.350'	W122° 39.859'
Moss Dip	N39° 03.433'	W122° 58.799'	Water Source	N39° 21.566'	W122° 39.279'
Pipe Dip	N39° 02.546'	W122° 37.057'	MNF02 Portable	N39° 18.497'	W122° 56.382'
Pocket Dip	N39° 27.960'	W122° 42.650'	NIFC C82	N39° 25.322'	W123° 04.470'
Potter Valley Dip	N39° 16.541'	W123° 04.056'	NIFC C12	N39° 19.170'	W123° 00.360'
Solar Dip	N39° 23.922'	W123° 03.693'	NIFC C21	N39° 15.606'	W122° 42.906'
Staging Dip	N39° 23.710'	W122° 58.250'	C11 T15/NIFC C67	N39° 26.051'	W122° 41.598'
Tree Dip	N39° 25.466'	W123° 07.907'	C11 T16	N39° 05.920'	W122° 29.316'
Tule Dip	N39° 10.560'	W122° 57.250'	NIFC C26	N39° 31.321'	W122° 56.214'
Twins Dip	N39° 14.030'	W122° 56.750'	NIFC C24	N39° 31.240'	W122° 40.967'
Winery Dip	N39° 02.610'	W122° 42.250'	NIFC C67	N39° 26.051'	W122° 41.598'
Wire Dip	N39° 01.920'	W122° 42.470'	Upperlake Staging	N39° 09.704'	W122° 55.116'
Stoney Dip	N39° 30.96'	W122° 30.99'	Soda Spike Camp	N39° 25.529'	W122° 58.756'
Tower Dip	N39° 30.58'	W122° 34.54'	Stonyford Camp	N39° 22.417'	W122° 32.358'
DP-1	N39° 14.552'	W123° 07.210'	High Glade Lookout	N39° 12.534'	W122° 48.599'
DP-3	N39° 14.354'	W123° 06.487'	MNF02 Portable	N39° 18.497'	W122° 56.382'
DP-5	N39° 15.115'	W123° 06.462'	Mobile Weather Unit	N39° 17.765'	W122° 39.321'
DP-11	N39° 16.712'	W123° 04.364'	Casino Check	N39° 01.223'	W122° 53.562'
DP-13	N39° 16.858'	W123° 01.377'	Kneecap Check	N39° 33.868'	W122° 47.935'
DP-15	N39° 18.805'	W123° 00.940'	Long Ridge Check	N39° 18.776'	W122° 49.283'
DP-17	N39° 23.629'	W122° 58.477'	Mill Check	N39° 22.890'	W123° 06.220'
DP-19	N39° 20.991'	W123° 03.560'	Orchard Check	N38° 57.760'	W122° 54.570'
DP-21	N39° 24.681'	W122° 58.527'	Red Check	N39° 03.905'	W123° 05.484'
DP-22	N39° 22.860'	W122° 54.041'	Soda Check	N39° 00.230'	W122° 46.600'
DP-23	N39° 31.194'	W122° 41.859'	Sugar Check	N39° 26.610'	W122° 33.660'
DP-24	N39° 19.255'	W122° 50.799'	Ford I.P.	N39° 18.620'	W123° 11.489'
DP-25	N39° 27.752'	W122° 44.427'	Lake Mendocino I.P.	N39° 13.470'	W123° 10.080'
DP-26	N39° 31.073'	W122° 42.867'	Pillsbury I.P.	N39° 25.470'	W122° 57.160'
DP-27	N39° 34.395'	W122° 42.168'	Winery I.P.	N38° 59.400'	W123° 07.480'
DP-28	N39° 18.141'	W122° 42.674'	Lakeport I.P.	N39° 03.530'	W122° 53.920'
DP-29	N39° 35.637'	W122° 33.370'	Cloverdale I.P	N38° 47.880'	W123° 00.779'
DP-30	N39° 18.150'	W122° 31.419'	Peak I.P.	N38° 57.570'	W123° 08.460'
DP-31	N39° 16.130'	W122° 28.833'	Tower I.P.	N39° 07.781'	W123° 04.591'
DP-32	N39° 21.111'	W122° 39.770'	Stoney I.P.	N39° 34.24'	W122° 31.70'
DP-33	N39° 09.893'	W122° 26.340'	Elk Creek Helibase	N39° 35.066'	W122° 35.229'
DP-35	N39° 09.421'	W122° 28.816'	Willits Helibase	N39° 27.165'	W123° 22.359'
DP-37	N39° 01.067'	W122° 34.297'	H-2	N39° 26.720'	W122° 43.150'
DP-39	N39° 04.335'	W122° 39.052'	H-3	N39° 21.366'	W123° 6.533'
DP-43	N39° 08.071'	W122° 46.619'	H-4	N39° 25.460'	W123° 4.430'
DP-45	N39° 06.261'	W122° 45.629'			