



AIR OPERATIONS Mendocino Complex

CA-MEU-008674
September 5, 2018

TFR/Rotor Air to Air 125.925
Air to Ground CMD 159.4500

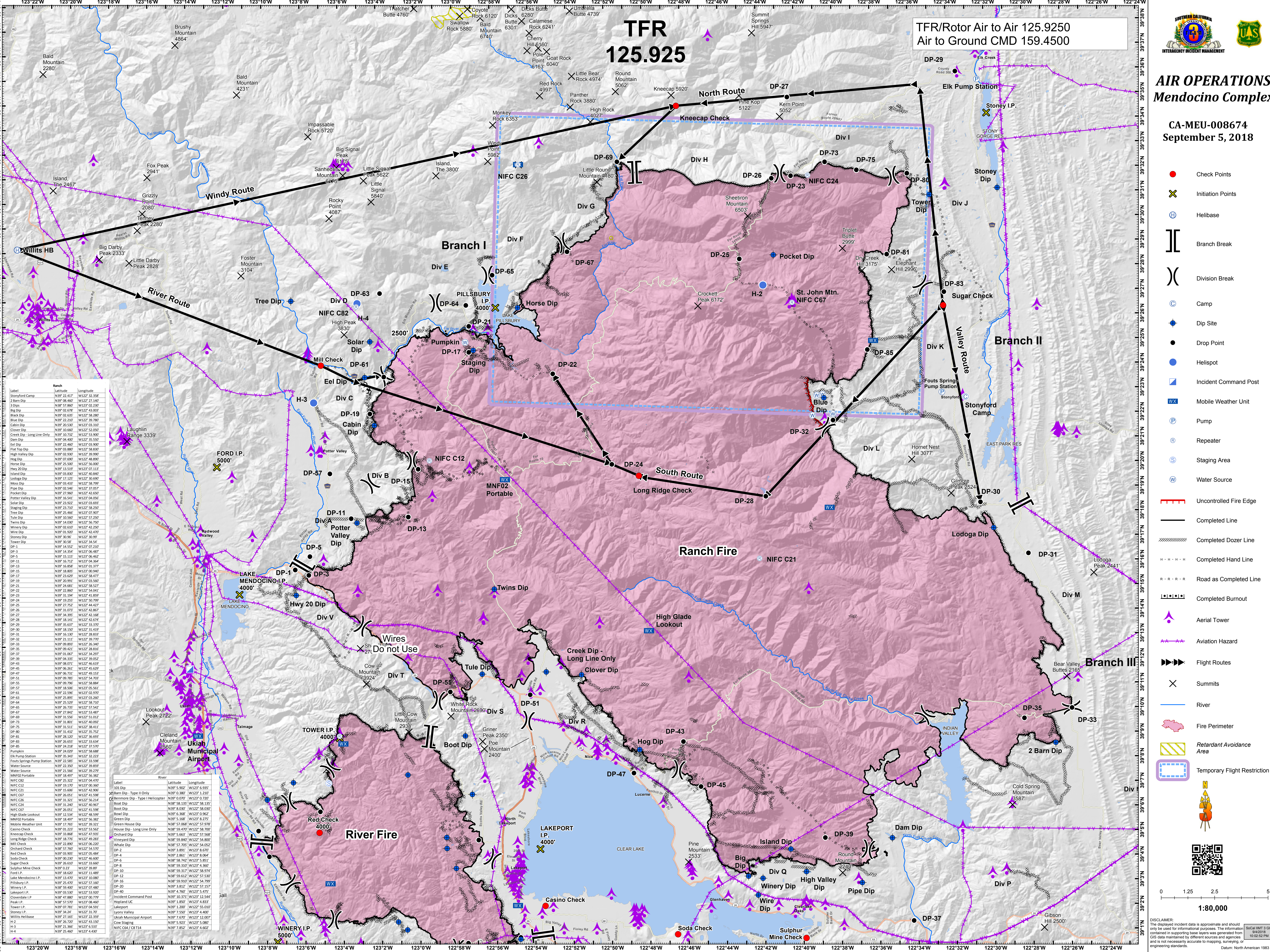
TFR 125.925

- Check Points
- ✕ Initiation Points
- Ⓜ Helibase
- Branch Break
-) Division Break
- Ⓢ Camp
- ♦ Dip Site
- Drop Point
- Helispot
- Incident Command Post
- WX Mobile Weather Unit
- Ⓟ Pump
- Ⓡ Repeater
- Ⓢ Staging Area
- Ⓜ Water Source
- Uncontrolled Fire Edge
- Completed Line
- Completed Dozer Line
- Completed Hand Line
- Road as Completed Line
- Completed Burnout
- ▲ Aerial Tower
- ⚡ Aviation Hazard
- ▶▶▶▶ Flight Routes
- ✕ Summits
- River
- Fire Perimeter
- Retardant Avoidance Area
- Temporary Flight Restriction

0 1.25 2.5 5 Miles

1:80,000

DISCLAIMER: The disclosed incident data is approximate and should only be used for informational purposes. The information contained in supporting base layers was generated from GIS data maintained by different sources and agencies and is not necessarily accurate to mapping, surveying, or engineering standards. Datum: North American 1983



Label	Latitude	Longitude
Stoneyford Camp	N39° 22' 41"	W122° 32' 38"
2 Barn Dip	N39° 08' 46"	W122° 27' 40"
3 Dips	N39° 57' 86"	W122° 02' 23"
Big Dip	N39° 02' 67"	W122° 43' 03"
Black Dip	N39° 02' 63"	W122° 58' 28"
Blue Dip	N39° 22' 21"	W122° 39' 76"
Cabin Dip	N39° 20' 59"	W122° 03' 33"
Clover Dip	N39° 10' 66"	W122° 52' 09"
Creek Dip - Long Line Only	N39° 10' 72"	W122° 53' 90"
Dam Dip	N39° 04' 48"	W122° 55' 56"
Eel Dip	N39° 22' 46"	W122° 03' 90"
Flat Top Dip	N39° 09' 88"	W122° 58' 83"
High Valley Dip	N39° 13' 59"	W122° 39' 96"
Hog Dip	N39° 07' 69"	W122° 48' 80"
Horse Dip	N39° 25' 50"	W122° 56' 00"
Hwy 20 Dip	N39° 13' 59"	W122° 07' 13"
Island Dip	N39° 03' 89"	W122° 40' 84"
Lodge Dip	N39° 17' 12"	W122° 30' 60"
Mountain Dip	N39° 04' 48"	W122° 58' 79"
Pipe Dip	N39° 02' 54"	W122° 37' 05"
Pocket Dip	N39° 27' 96"	W122° 42' 65"
Potter Valley Dip	N39° 16' 51"	W122° 04' 66"
Solar Dip	N39° 23' 92"	W122° 03' 69"
Staging Dip	N39° 23' 71"	W122° 58' 29"
Tree Dip	N39° 25' 46"	W122° 07' 20"
Tule Dip	N39° 10' 56"	W122° 57' 29"
Twins Dip	N39° 14' 09"	W122° 56' 76"
Winery Dip	N39° 16' 07"	W122° 42' 26"
Wire Dip	N39° 01' 92"	W122° 42' 47"
Stoney Dip	N39° 30' 36"	W122° 39' 99"
Tower Dip	N39° 30' 58"	W122° 34' 54"
DP-1	N39° 14' 55"	W122° 07' 21"
DP-3	N39° 14' 34"	W122° 06' 48"
DP-5	N39° 15' 15"	W122° 06' 42"
DP-11	N39° 16' 72"	W122° 04' 34"
DP-13	N39° 16' 88"	W122° 03' 37"
DP-15	N39° 18' 89"	W122° 03' 36"
DP-17	N39° 21' 62"	W122° 54' 47"
DP-19	N39° 20' 99"	W122° 03' 56"
DP-21	N39° 24' 08"	W122° 58' 57"
DP-22	N39° 22' 89"	W122° 54' 01"
DP-23	N39° 31' 194"	W122° 41' 89"
DP-24	N39° 19' 25"	W122° 50' 79"
DP-25	N39° 22' 79"	W122° 44' 47"
DP-26	N39° 31' 073"	W122° 42' 86"
DP-27	N39° 34' 99"	W122° 42' 38"
DP-28	N39° 18' 141"	W122° 42' 64"
DP-29	N39° 35' 63"	W122° 33' 70"
DP-30	N39° 18' 137"	W122° 31' 43"
DP-31	N39° 18' 139"	W122° 28' 83"
DP-32	N39° 21' 111"	W122° 39' 70"
DP-33	N39° 09' 89"	W122° 26' 34"
DP-35	N39° 09' 421"	W122° 28' 86"
DP-37	N39° 01' 067"	W122° 34' 29"
DP-39	N39° 04' 335"	W122° 39' 05"
DP-41	N39° 08' 071"	W122° 46' 49"
DP-45	N39° 06' 261"	W122° 45' 62"
DP-47	N39° 06' 731"	W122° 49' 31"
DP-51	N39° 09' 795"	W122° 54' 70"
DP-55	N39° 09' 796"	W122° 58' 884"
DP-57	N39° 18' 596"	W122° 05' 561"
DP-61	N39° 22' 096"	W122° 07' 297"
DP-63	N39° 25' 895"	W122° 03' 260"
DP-64	N39° 25' 529"	W122° 58' 710"
DP-65	N39° 18' 122"	W122° 57' 427"
DP-67	N39° 27' 842"	W122° 53' 487"
DP-69	N39° 31' 596"	W122° 51' 027"
DP-73	N39° 18' 122"	W122° 40' 887"
DP-75	N39° 31' 511"	W122° 38' 411"
DP-80	N39° 31' 432"	W122° 35' 752"
DP-81	N39° 18' 122"	W122° 36' 097"
DP-83	N39° 26' 655"	W122° 33' 634"
DP-85	N39° 24' 218"	W122° 37' 570"
DP-87	N39° 24' 097"	W122° 58' 488"
DP-89	N39° 35' 343"	W122° 32' 223"
DP-91	N39° 18' 497"	W122° 56' 382"
NIFC C26	N39° 19' 197"	W122° 03' 369"
NIFC C12	N39° 15' 066"	W122° 42' 906"
NIFC C21	N39° 15' 115"	W122° 41' 598"
NIFC C24	N39° 31' 321"	W122° 56' 214"
NIFC C28	N39° 31' 247"	W122° 49' 567"
NIFC C32	N39° 30' 051"	W122° 41' 598"
NIFC C34	N39° 12' 534"	W122° 48' 599"
MNF02 Portable	N39° 18' 497"	W122° 56' 382"
Mobile Weather Unit	N39° 17' 765"	W122° 39' 311"
Casino Check	N39° 01' 223"	W122° 53' 562"
Kneecap Check	N39° 33' 868"	W122° 47' 935"
Long Ridge Check	N39° 18' 770"	W122° 49' 283"
Mill Check	N39° 22' 899"	W122° 07' 207"
Orchard Check	N39° 57' 767"	W122° 54' 570"
Red Check	N39° 02' 987"	W122° 05' 444"
Soda Check	N39° 00' 297"	W122° 46' 007"
Sugar Check	N39° 26' 510"	W122° 33' 669"
Solar Mine Check	N39° 17' 765"	W122° 39' 311"
Ford I.P.	N39° 18' 607"	W122° 11' 489"
Lake Mendocino I.P.	N39° 13' 470"	W122° 10' 080"
Pillsbury I.P.	N39° 25' 497"	W122° 57' 467"
Winery I.P.	N39° 19' 907"	W122° 07' 487"
Lakeport I.P.	N39° 05' 530"	W122° 53' 907"
Cloverdale I.P.	N39° 47' 887"	W122° 03' 779"
Peak I.P.	N39° 21' 307"	W122° 48' 467"
Tower I.P.	N39° 07' 781"	W122° 04' 591"
Stoney I.P.	N39° 34' 24	W122° 31' 797"
Wills Helibase	N39° 21' 165"	W122° 22' 397"
H-2	N39° 27' 367"	W122° 43' 359"
H-4	N39° 21' 367"	W122° 5' 537"
H-4	N39° 25' 497"	W122° 4' 897"