

AIR OPERATIONS

Mendocino Complex

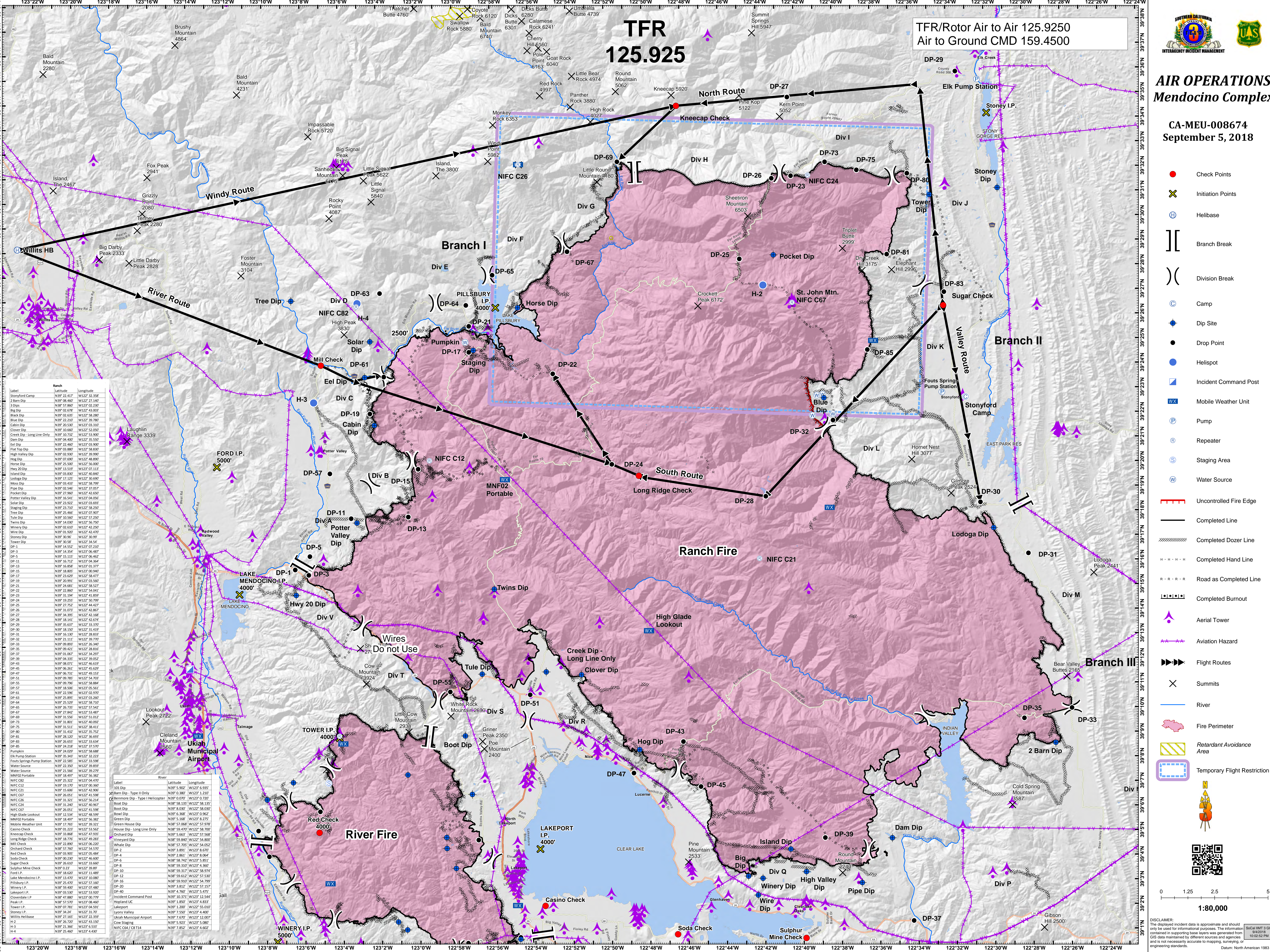
CA-MEU-008674
September 5, 2018

- Check Points
- ✕ Initiation Points
- ⊕ Helibase
- Branch Break
- Division Break
- Camp
- Dip Site
- Drop Point
- Helispot
- Incident Command Post
- WX Mobile Weather Unit
- P Pump
- Repeater
- S Staging Area
- W Water Source
- Uncontrolled Fire Edge
- Completed Line
- Completed Dozer Line
- Completed Hand Line
- Road as Completed Line
- Completed Burnout
- ▲ Aerial Tower
- ▲ Aviation Hazard
- ▶▶▶▶ Flight Routes
- ✕ Summits
- River
- Fire Perimeter
- Retardant Avoidance Area
- Temporary Flight Restriction

TFR

125.925

TFR/Rotor Air to Air 125.925
Air to Ground CMD 159.4500



Label	Latitude	Longitude
Stoneyford Camp	N39° 22' 43"	W122° 32' 28"
2 Barn Dip	N39° 08' 46"	W122° 27' 44"
3 Dips	N39° 57' 86"	W122° 02' 23"
Big Dip	N39° 02' 67"	W122° 43' 03"
Black Dip	N39° 02' 63"	W122° 58' 28"
Blue Dip	N39° 22' 21"	W122° 39' 76"
Cabin Dip	N39° 20' 59"	W123° 03' 33"
Clover Dip	N39° 10' 66"	W122° 52' 09"
Creek Dip - Long Line Only	N39° 10' 72"	W122° 53' 00"
Dam Dip	N39° 04' 48"	W122° 55' 56"
Eel Dip	N39° 22' 46"	W122° 03' 90"
Flat Top Dip	N39° 09' 88"	W122° 58' 83"
High Valley Dip	N39° 25' 99"	W122° 39' 98"
Hog Dip	N39° 07' 69"	W122° 48' 80"
Horse Dip	N39° 17' 25"	W122° 30' 60"
Hwy 20 Dip	N39° 13' 59"	W122° 07' 13"
Island Dip	N39° 03' 89"	W122° 40' 84"
Lodge Dip	N39° 17' 25"	W122° 30' 60"
Moist Dip	N39° 04' 48"	W122° 55' 56"
Pipe Dip	N39° 02' 54"	W122° 37' 05"
Pocket Dip	N39° 27' 96"	W122° 42' 65"
Potter Valley Dip	N39° 16' 51"	W122° 04' 66"
Solar Dip	N39° 23' 92"	W122° 03' 69"
Staging Dip	N39° 23' 71"	W122° 58' 25"
Tree Dip	N39° 25' 46"	W122° 07' 20"
Tule Dip	N39° 10' 56"	W122° 57' 25"
Twins Dip	N39° 14' 08"	W122° 56' 76"
Winery Dip	N39° 16' 07"	W122° 42' 26"
Wire Dip	N39° 01' 92"	W122° 42' 47"
Stoney Dip	N39° 30' 36"	W122° 39' 99"
Tower Dip	N39° 30' 58"	W122° 34' 54"
DP-1	N39° 14' 55"	W122° 07' 21"
DP-2	N39° 14' 34"	W122° 06' 48"
DP-3	N39° 15' 15"	W122° 06' 48"
DP-4	N39° 15' 15"	W122° 06' 48"
DP-5	N39° 15' 15"	W122° 06' 48"
DP-6	N39° 15' 15"	W122° 06' 48"
DP-7	N39° 15' 15"	W122° 06' 48"
DP-8	N39° 15' 15"	W122° 06' 48"
DP-9	N39° 15' 15"	W122° 06' 48"
DP-10	N39° 15' 15"	W122° 06' 48"
DP-11	N39° 15' 15"	W122° 06' 48"
DP-12	N39° 15' 15"	W122° 06' 48"
DP-13	N39° 15' 15"	W122° 06' 48"
DP-14	N39° 15' 15"	W122° 06' 48"
DP-15	N39° 15' 15"	W122° 06' 48"
DP-16	N39° 15' 15"	W122° 06' 48"
DP-17	N39° 15' 15"	W122° 06' 48"
DP-18	N39° 15' 15"	W122° 06' 48"
DP-19	N39° 15' 15"	W122° 06' 48"
DP-20	N39° 15' 15"	W122° 06' 48"
DP-21	N39° 15' 15"	W122° 06' 48"
DP-22	N39° 15' 15"	W122° 06' 48"
DP-23	N39° 15' 15"	W122° 06' 48"
DP-24	N39° 15' 15"	W122° 06' 48"
DP-25	N39° 15' 15"	W122° 06' 48"
DP-26	N39° 15' 15"	W122° 06' 48"
DP-27	N39° 15' 15"	W122° 06' 48"
DP-28	N39° 15' 15"	W122° 06' 48"
DP-29	N39° 15' 15"	W122° 06' 48"
DP-30	N39° 15' 15"	W122° 06' 48"
DP-31	N39° 15' 15"	W122° 06' 48"
DP-32	N39° 15' 15"	W122° 06' 48"
DP-33	N39° 15' 15"	W122° 06' 48"
DP-34	N39° 15' 15"	W122° 06' 48"
DP-35	N39° 15' 15"	W122° 06' 48"
DP-36	N39° 15' 15"	W122° 06' 48"
DP-37	N39° 15' 15"	W122° 06' 48"
DP-38	N39° 15' 15"	W122° 06' 48"
DP-39	N39° 15' 15"	W122° 06' 48"
DP-40	N39° 15' 15"	W122° 06' 48"
DP-41	N39° 15' 15"	W122° 06' 48"
DP-42	N39° 15' 15"	W122° 06' 48"
DP-43	N39° 15' 15"	W122° 06' 48"
DP-44	N39° 15' 15"	W122° 06' 48"
DP-45	N39° 15' 15"	W122° 06' 48"
DP-46	N39° 15' 15"	W122° 06' 48"
DP-47	N39° 15' 15"	W122° 06' 48"
DP-48	N39° 15' 15"	W122° 06' 48"
DP-49	N39° 15' 15"	W122° 06' 48"
DP-50	N39° 15' 15"	W122° 06' 48"
DP-51	N39° 15' 15"	W122° 06' 48"
DP-52	N39° 15' 15"	W122° 06' 48"
DP-53	N39° 15' 15"	W122° 06' 48"
DP-54	N39° 15' 15"	W122° 06' 48"
DP-55	N39° 15' 15"	W122° 06' 48"
DP-56	N39° 15' 15"	W122° 06' 48"
DP-57	N39° 15' 15"	W122° 06' 48"
DP-58	N39° 15' 15"	W122° 06' 48"
DP-59	N39° 15' 15"	W122° 06' 48"
DP-60	N39° 15' 15"	W122° 06' 48"
DP-61	N39° 15' 15"	W122° 06' 48"
DP-62	N39° 15' 15"	W122° 06' 48"
DP-63	N39° 15' 15"	W122° 06' 48"
DP-64	N39° 15' 15"	W122° 06' 48"
DP-65	N39° 15' 15"	W122° 06' 48"
DP-66	N39° 15' 15"	W122° 06' 48"
DP-67	N39° 15' 15"	W122° 06' 48"
DP-68	N39° 15' 15"	W122° 06' 48"
DP-69	N39° 15' 15"	W122° 06' 48"
DP-70	N39° 15' 15"	W122° 06' 48"
DP-71	N39° 15' 15"	W122° 06' 48"
DP-72	N39° 15' 15"	W122° 06' 48"
DP-73	N39° 15' 15"	W122° 06' 48"
DP-74	N39° 15' 15"	W122° 06' 48"
DP-75	N39° 15' 15"	W122° 06' 48"
DP-76	N39° 15' 15"	W122° 06' 48"
DP-77	N39° 15' 15"	W122° 06' 48"
DP-78	N39° 15' 15"	W122° 06' 48"
DP-79	N39° 15' 15"	W122° 06' 48"
DP-80	N39° 15' 15"	W122° 06' 48"
DP-81	N39° 15' 15"	W122° 06' 48"
DP-82	N39° 15' 15"	W122° 06' 48"
DP-83	N39° 15' 15"	W122° 06' 48"
DP-84	N39° 15' 15"	W122° 06' 48"
DP-85	N39° 15' 15"	W122° 06' 48"

Scale: 1:80,000
0 1.25 2.5 5 Miles

DISCLAIMER: The disclosed incident data is approximate and should only be used for informational purposes. The information contained in this supporting base layers was generated from GIS data maintained by various sources and agencies and is not necessarily accurate to mapping, surveying, or engineering standards.
Date: North American 1983