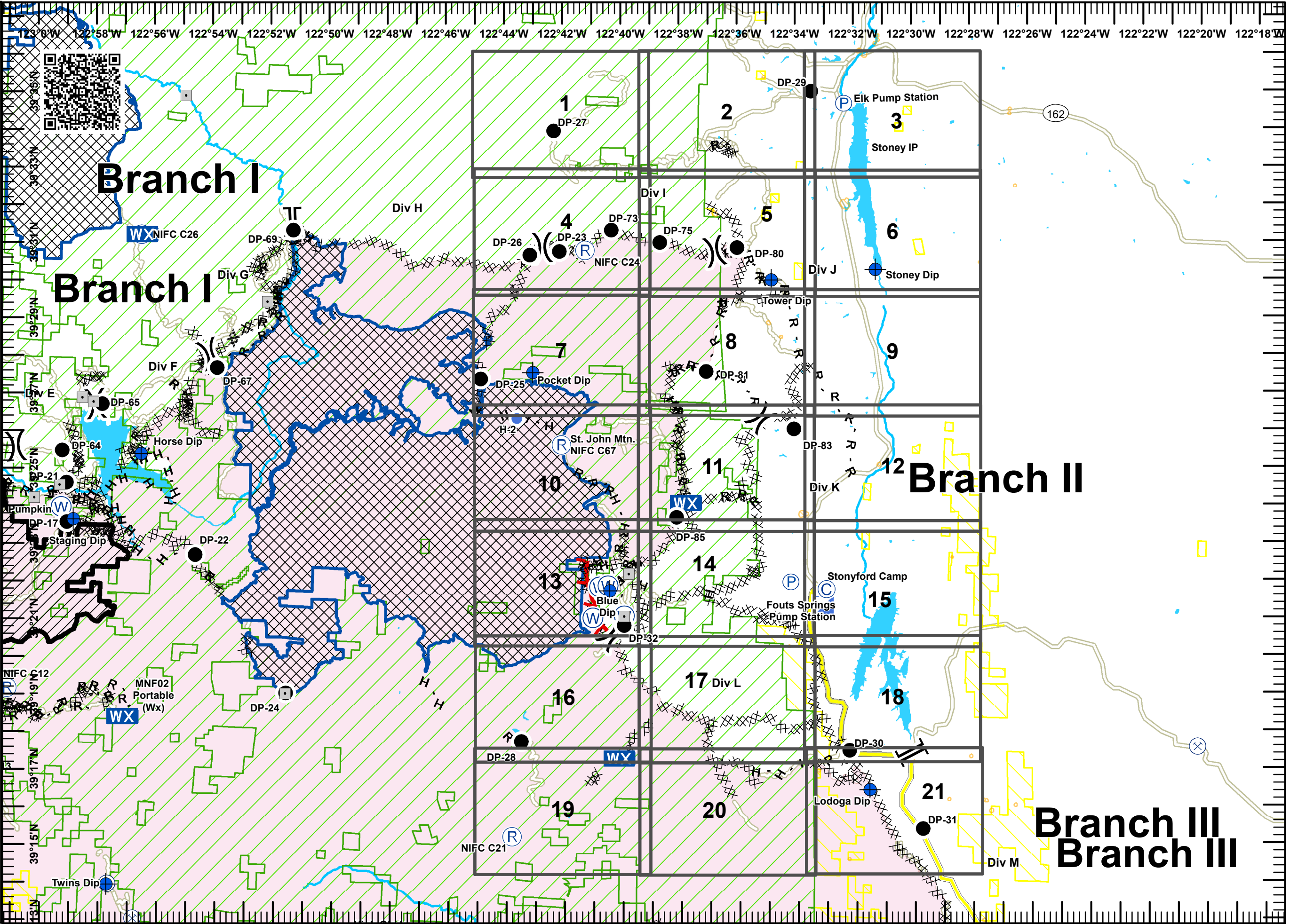


**Mendocino Complex  
CA-MEU-008674**

September 12, 2018

**IAP Grid Ranch Fire  
Branch II**



- [ ] Branch Break
- ) Division Break
- ⊙ Camp
- ⊙ Dip Site
- Drop Point
- Ⓟ Pump
- Ⓜ Helibase
- Ⓜ Helispot
- WX Mobile Weather Unit
- Ⓡ Repeater
- Ⓢ Staging Area
- Ⓜ Water Source
- Uncontrolled Fire Edge
- Completed Line
- xxx Completed Dozer Line
- H - H Completed Hand Line
- R - R Road as Completed Line
- ▭ Bureau of Land Management
- ▭ USDA Forest Service
- ⊗ Active Mines (2010)
- ▭ Bridge
- ▭ Pine Mountain Project
- ▭ Wilderness Area

0 2 4 Miles

Datum: NAD83

1:175,000

SoCal IMT3 GIS  
9/11/2018  
23:43 hrs

123°0'W 122°58'W 122°56'W 122°54'W 122°52'W 122°50'W 122°48'W 122°46'W 122°44'W 122°42'W 122°40'W 122°38'W 122°36'W 122°34'W 122°32'W 122°30'W 122°28'W 122°26'W 122°24'W 122°22'W 122°20'W 122°18'W

39°33'N 39°31'N 39°29'N 39°27'N 39°25'N 39°23'N 39°21'N 39°19'N 39°17'N 39°15'N 39°13'N

Branch I  
Branch I  
Branch II  
Branch II  
Branch III  
Branch III

Div H  
Div G  
Div F  
Div E  
Div D  
Div C  
Div B  
Div A  
Div I  
Div J  
Div K  
Div L  
Div M

DP-27, DP-26, DP-23, DP-73, DP-75, DP-80, DP-29, DP-69, DP-67, DP-65, DP-64, DP-21, DP-17, DP-22, DP-24, DP-25, DP-28, DP-32, DP-30, DP-31, DP-81, DP-85, DP-83, DP-81, DP-85, DP-32, DP-30, DP-31

Elk Pump Station  
Stoney IP  
Stoney Dip  
Pocket Dip  
St. John Mtn. NIFC C67  
Stonyford Camp  
Fouts Springs Pump Station  
Lodoga Dip  
Twins Dip

WX NIFC C26  
WX NIFC C24  
WX NIFC C67  
WX NIFC C21

1 2 3 4 5 6 7 8 9 10 11 12 13 14 15 16 17 18 19 20 21

162

SoCal IMT3 GIS  
9/11/2018  
23:43 hrs