

# Mendocino Complex

CA-MEU-008674

September 18, 2018

Page 1 of 21

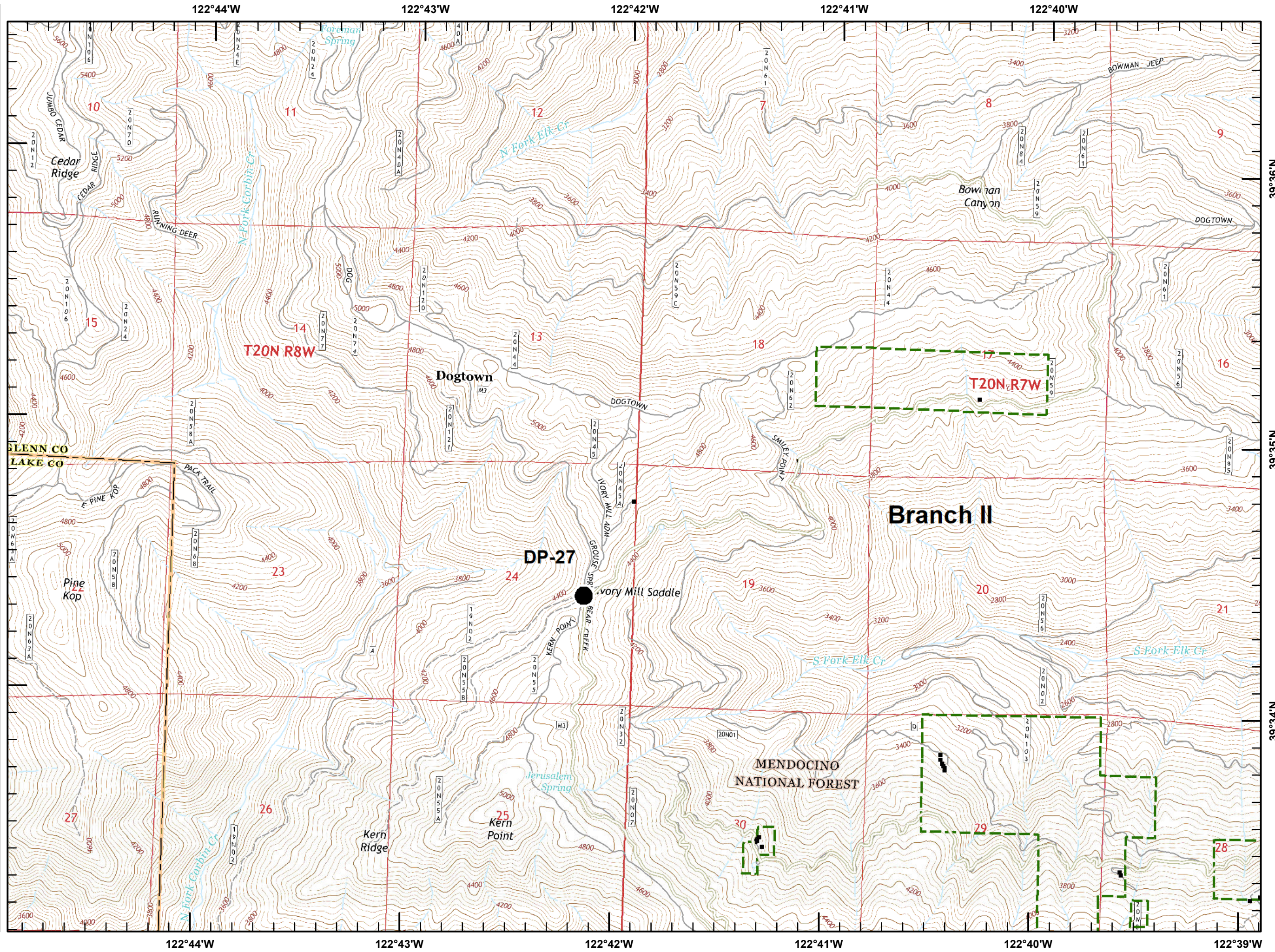
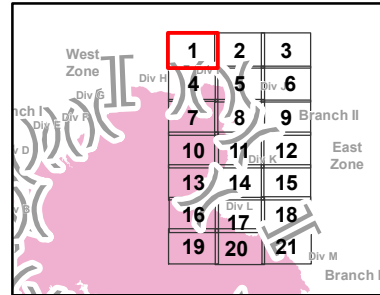
IAP Branch II



Structures (USFS)

USDA Forest Service

Datum: NAD 83



# Mendocino Complex

CA-MEU-008674

September 18, 2018

Page 2 of 21

## IAP Branch II

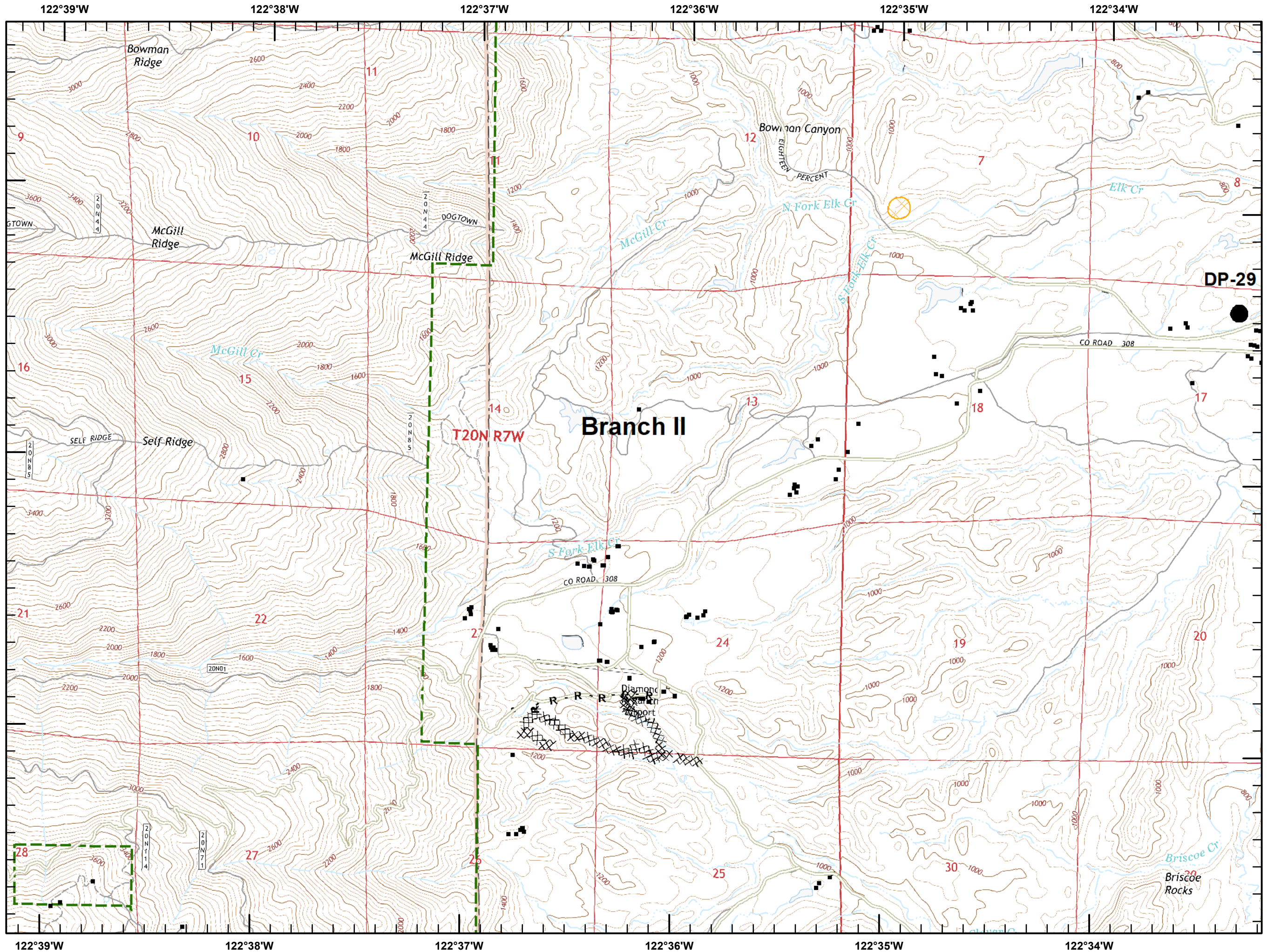
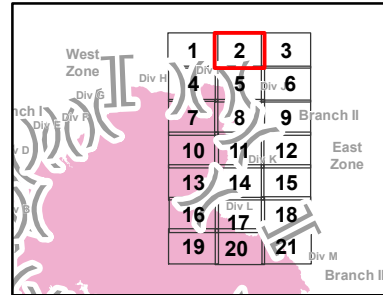


Structures (USFS)

USDA Forest Service

Equipment Avoidance Areas

Datum: NAD 83



# Mendocino Complex

CA-MEU-008674

September 18, 2018

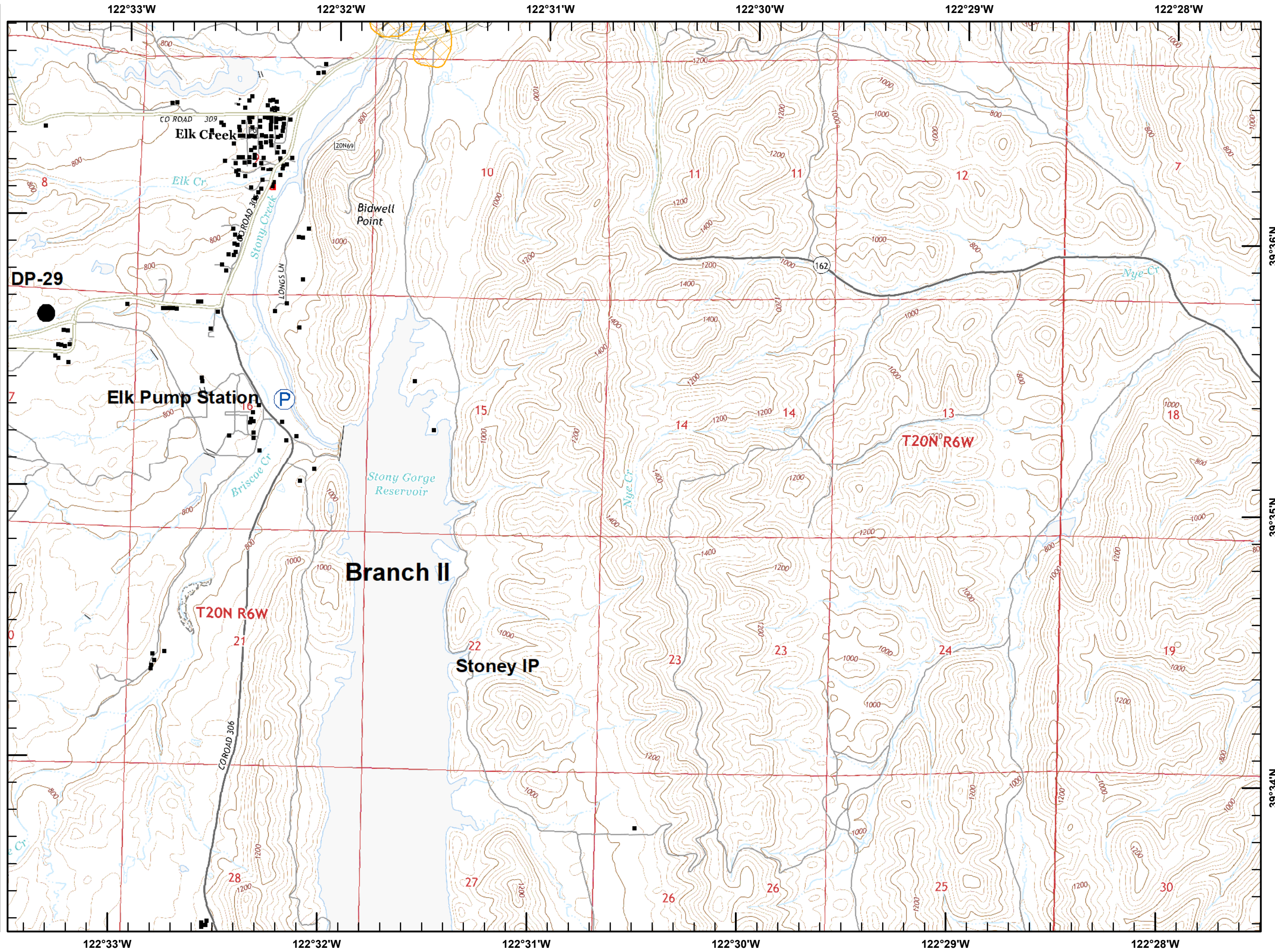
Page 3 of 21

## IAP Branch II

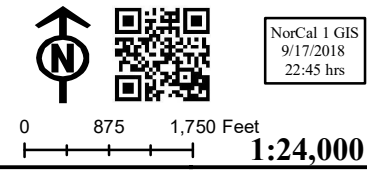
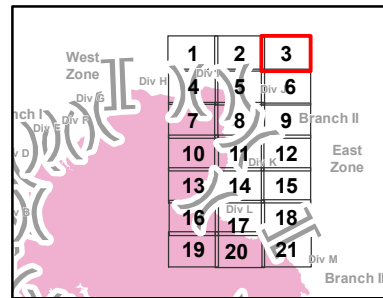


■ Structures (USFS)

▨ Equipment Avoidance Areas



Datum: NAD 83



# Mendocino Complex

CA-MEU-008674

September 18, 2018

Page 4 of 21

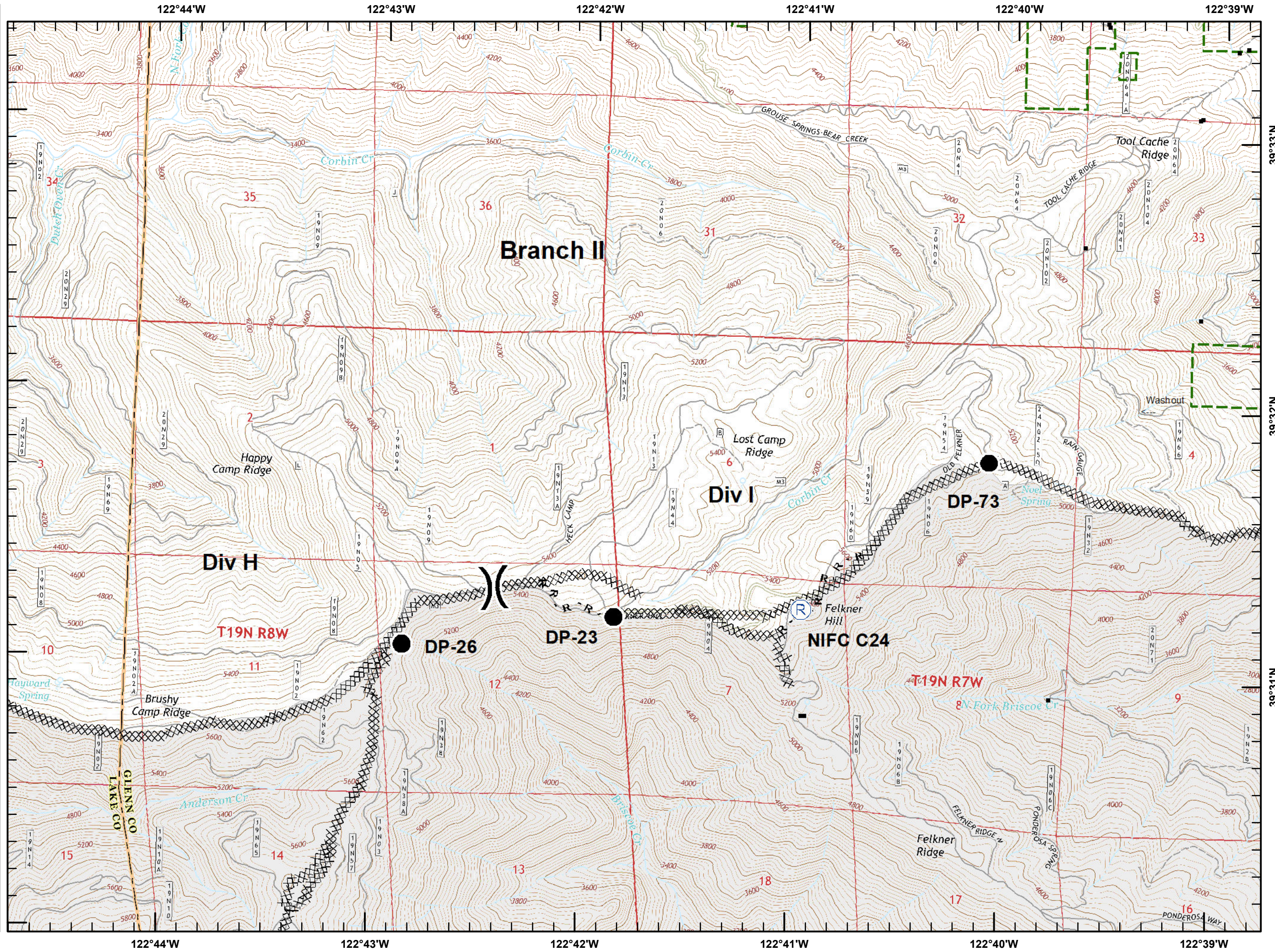
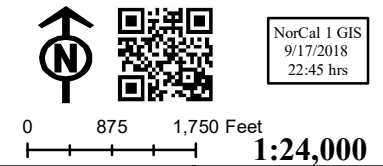
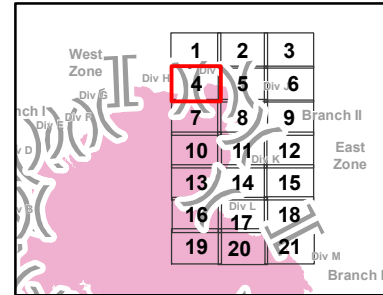
## IAP Branch II



■ Structures (USFS)

▭ USDA Forest Service

Datum: NAD 83



# Mendocino Complex

CA-MEU-008674

September 18, 2018

Page 5 of 21

## IAP Branch II

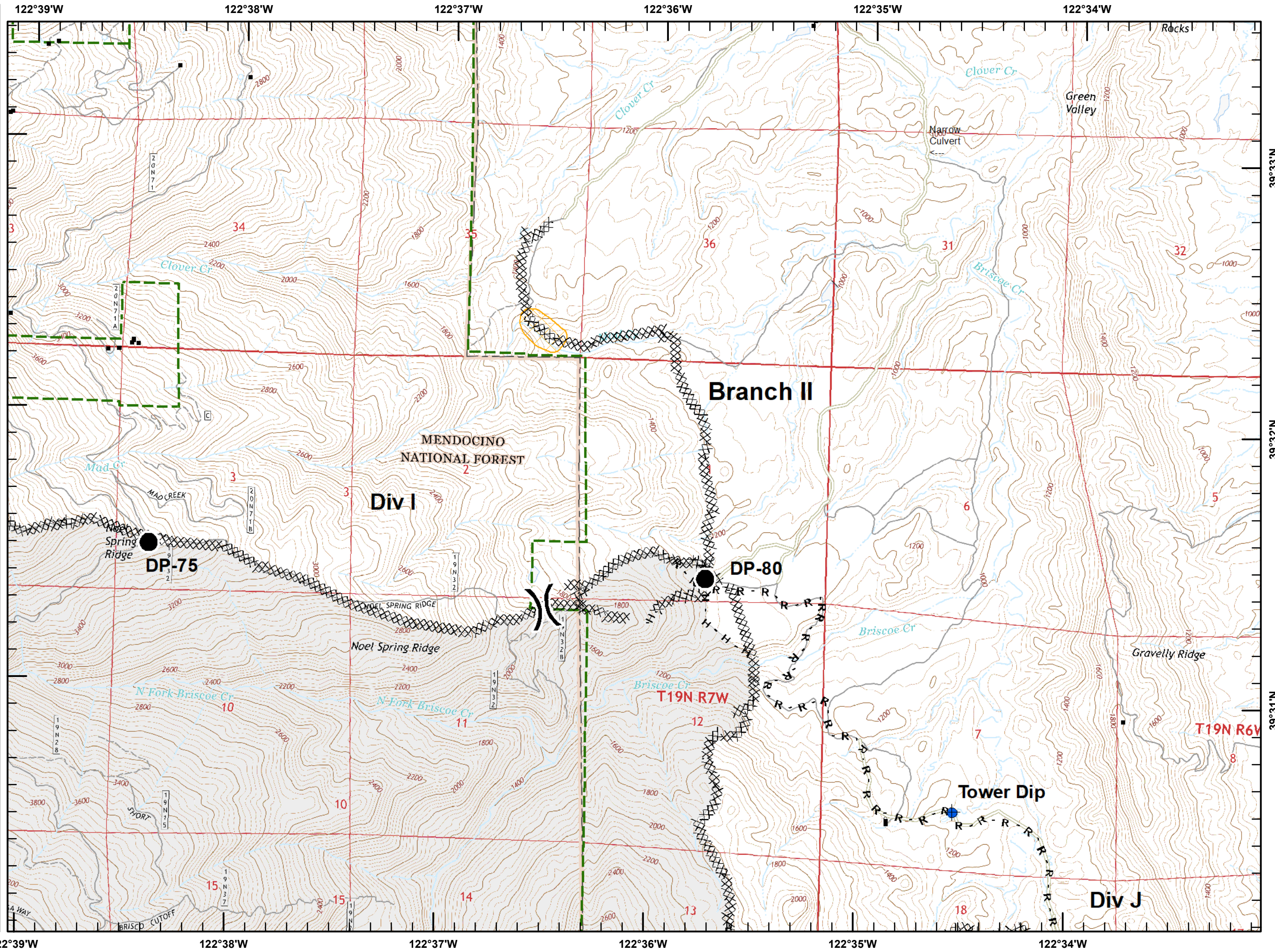
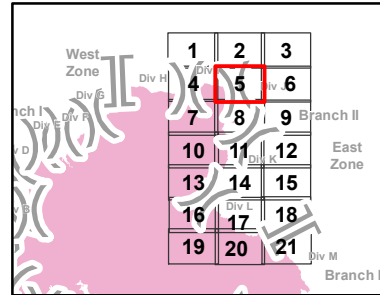


Structures (USFS)

USDA Forest Service

Equipment Avoidance Areas

Datum: NAD 83



# Mendocino Complex

CA-MEU-008674

September 18, 2018

Page 6 of 21

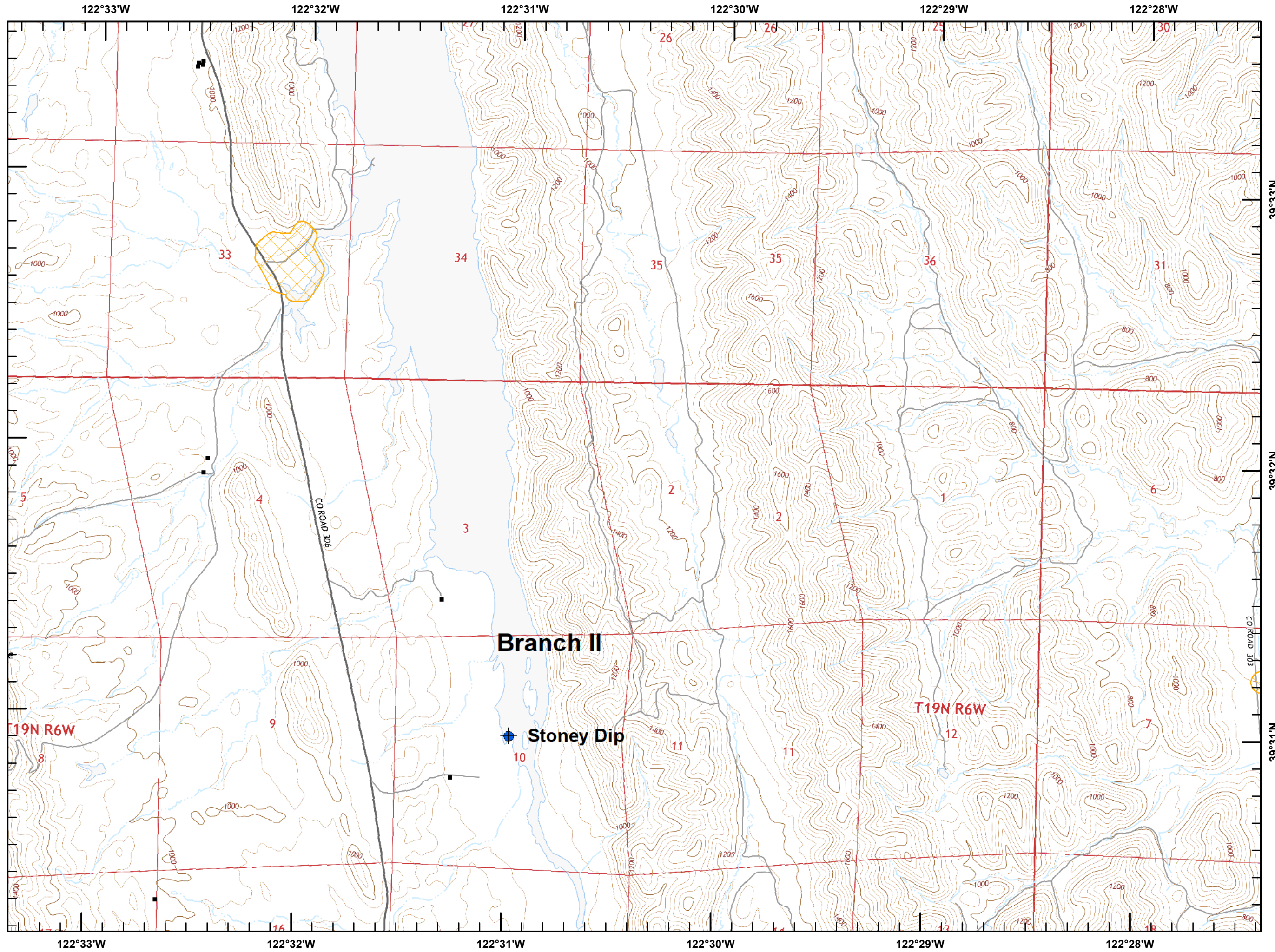
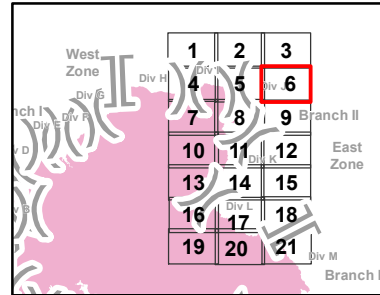
## IAP Branch II



■ Structures (USFS)

▨ Equipment Avoidance Areas

Datum: NAD 83



# Mendocino Complex

CA-MEU-008674

September 18, 2018

Page 7 of 21

IAP Branch II

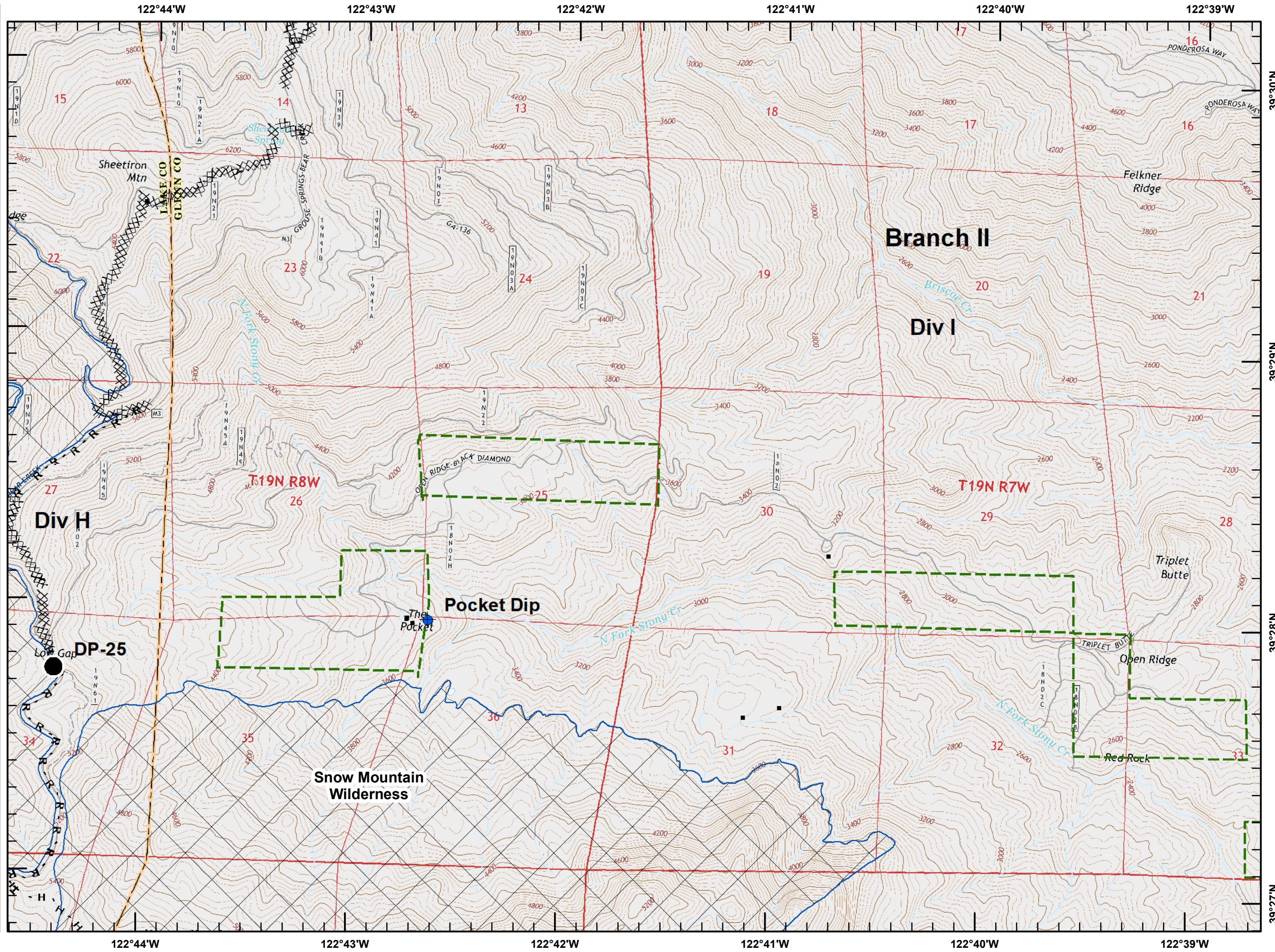
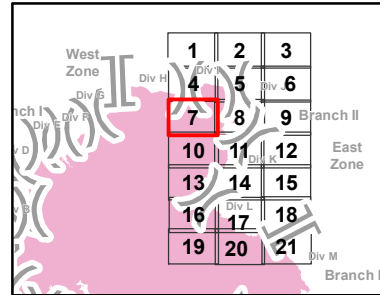


Structures (USFS)

USDA Forest Service

Wilderness Area

Datum: NAD 83







# Mendocino Complex

CA-MEU-008674

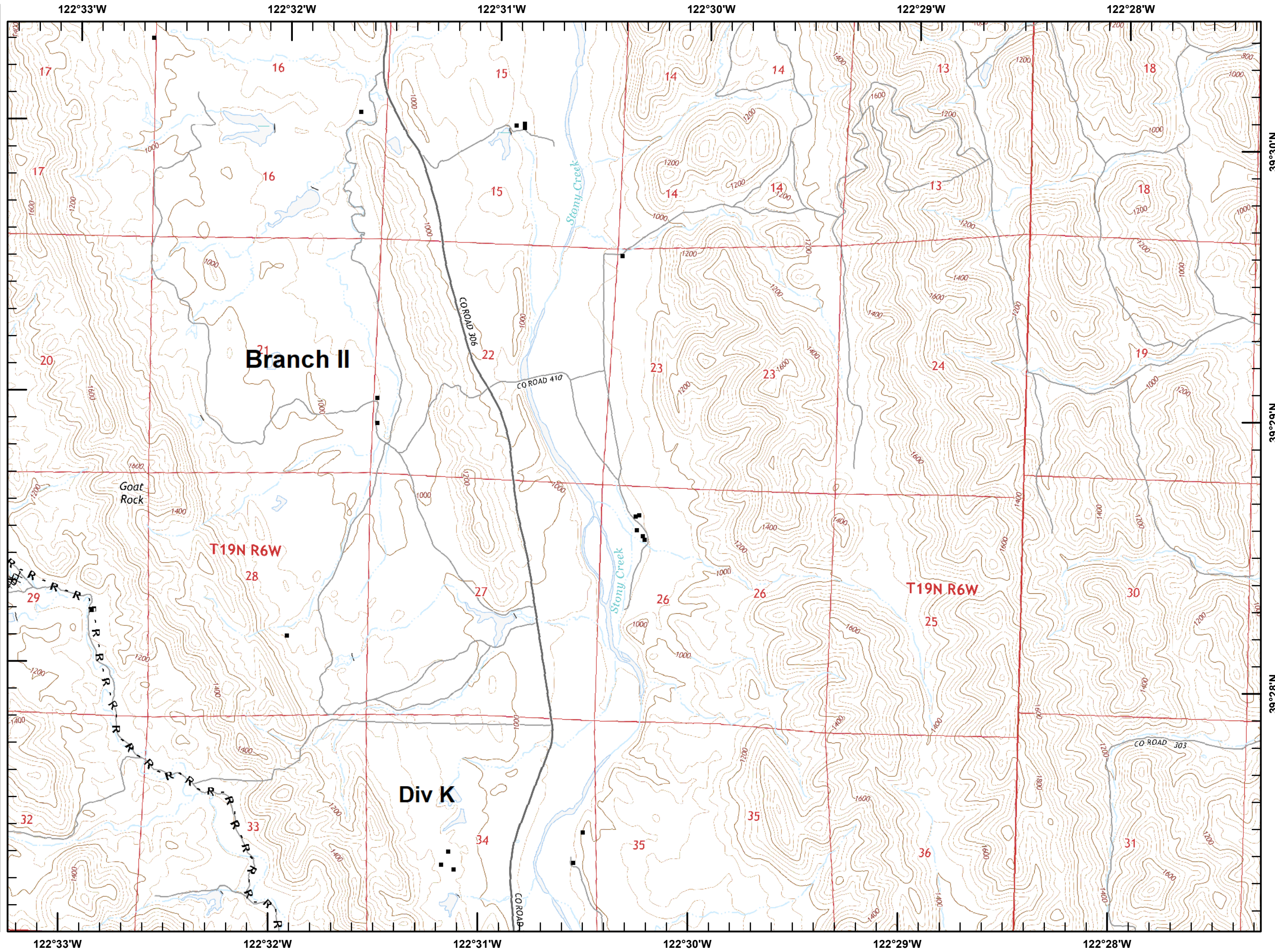
September 18, 2018

Page 9 of 21

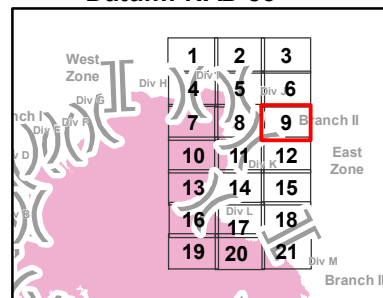
## IAP Branch II



■ Structures (USFS)



Datum: NAD 83



# Mendocino Complex

CA-MEU-008674

September 18, 2018

Page 10 of 21

IAP Branch II

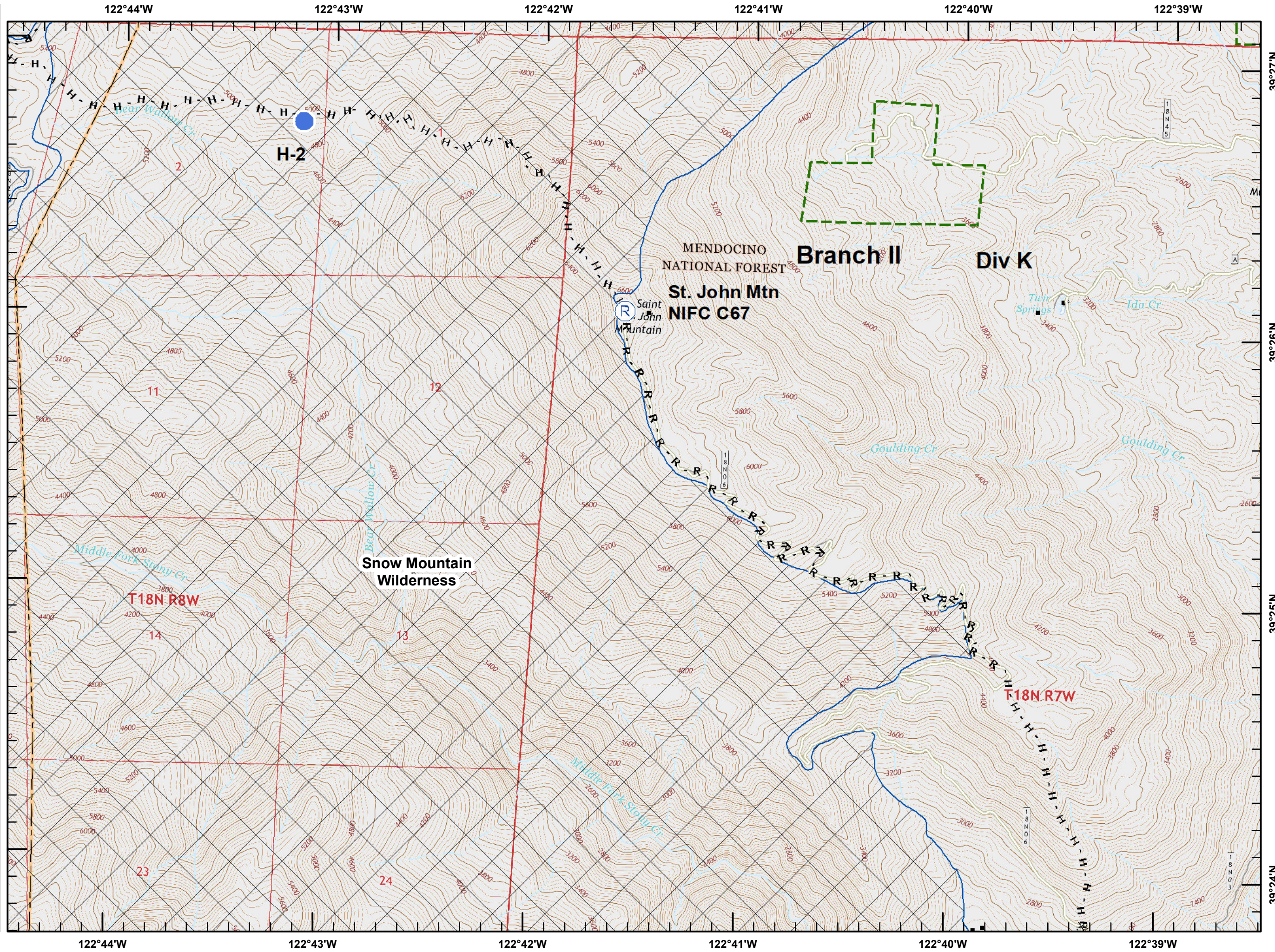
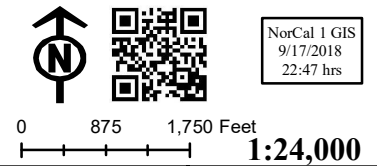
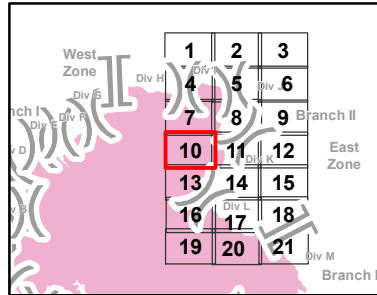


■ Structures (USFS)

▭ USDA Forest Service

⊠ Wilderness Area

Datum: NAD 83



# Mendocino Complex

CA-MEU-008674

September 18, 2018

Page 11 of 21

## IAP Branch II

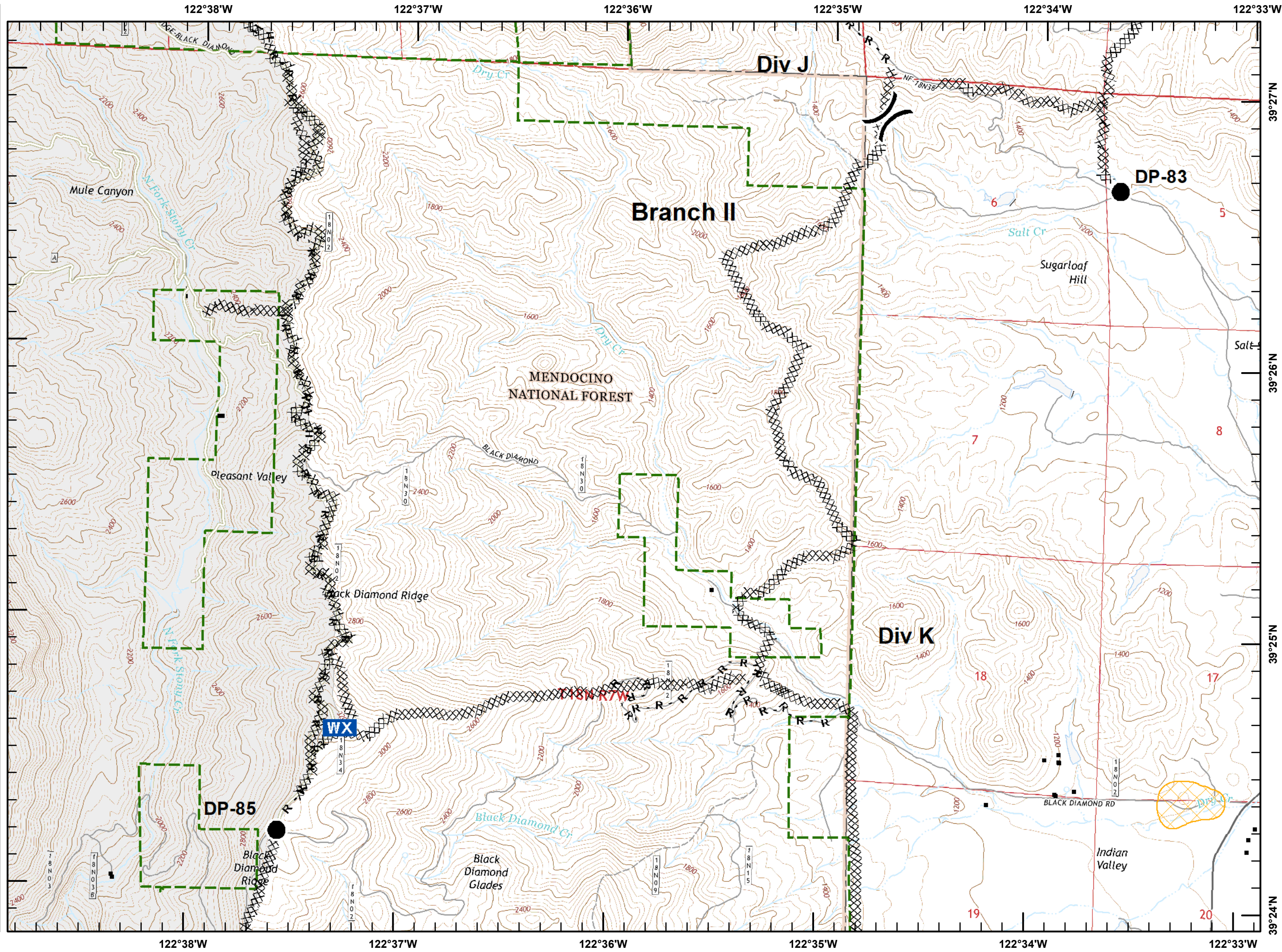
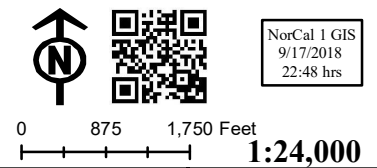
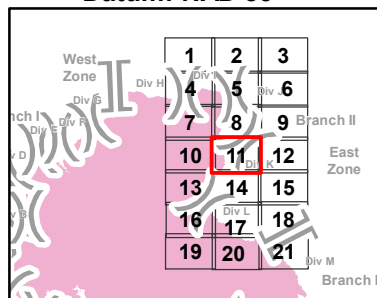


Structures (USFS)

USDA Forest Service

Equipment Avoidance Areas

Datum: NAD 83



# Mendocino Complex

CA-MEU-008674

September 18, 2018

Page 12 of 21

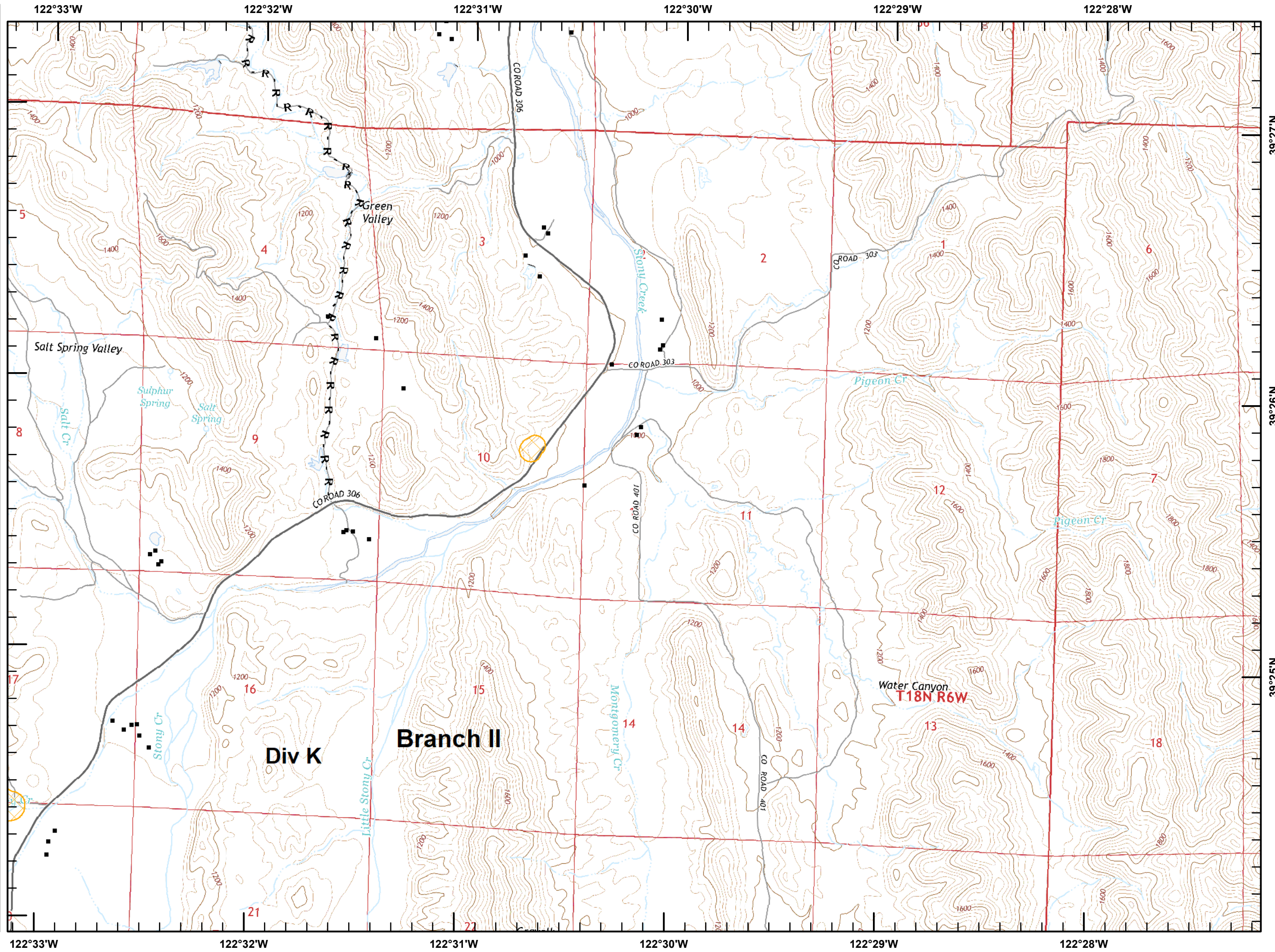
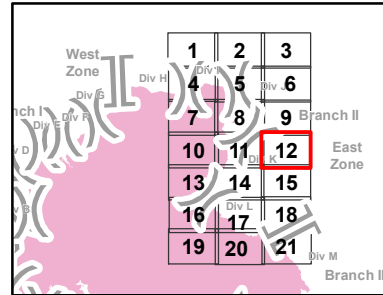
## IAP Branch II



■ Structures (USFS)

▨ Equipment Avoidance Areas

Datum: NAD 83



# Mendocino Complex

CA-MEU-008674

September 18, 2018

Page 13 of 21

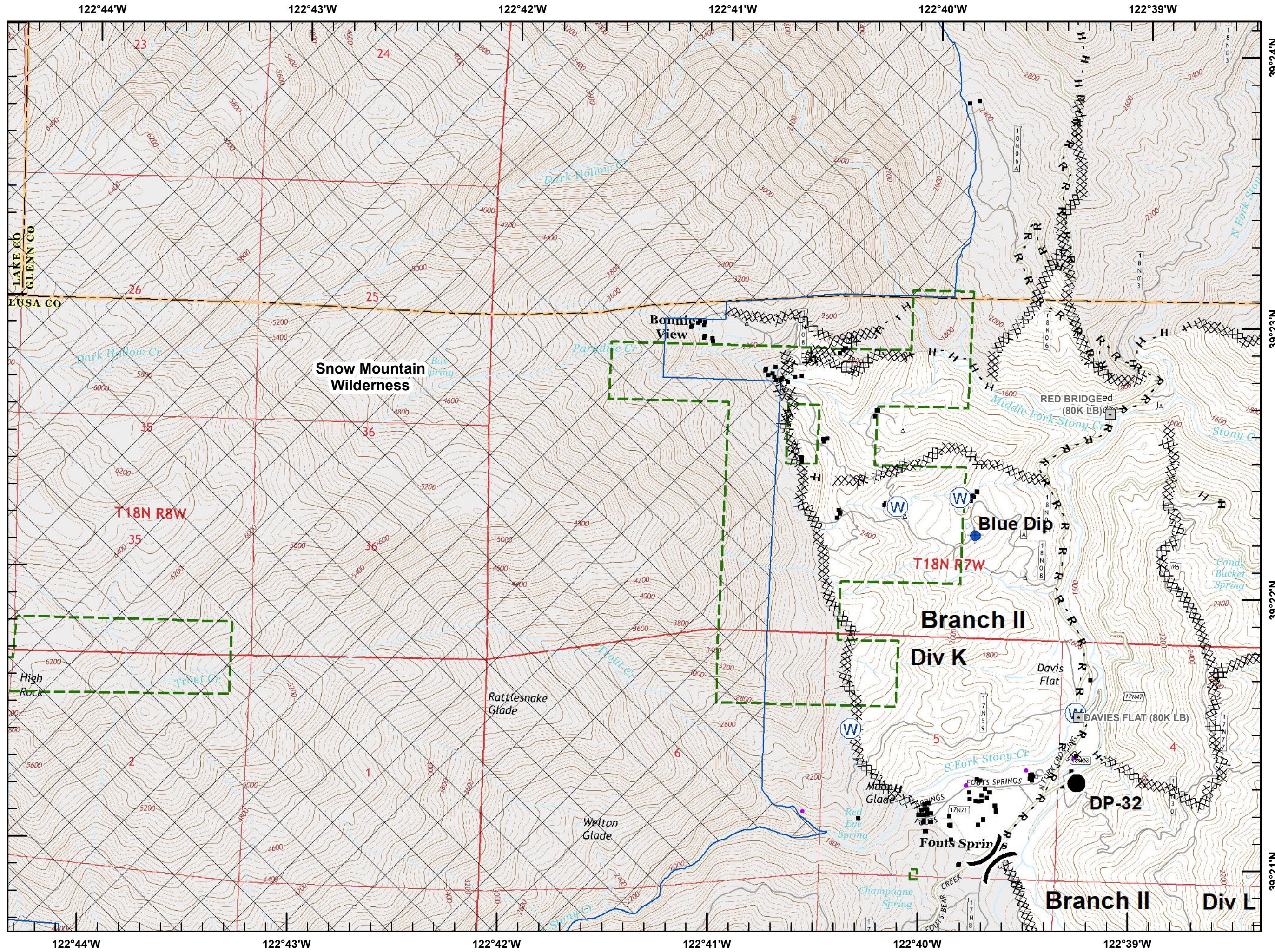
## IAP Branch II



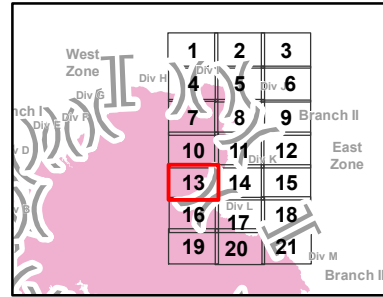
■ Structures (USFS)

▭ USDA Forest Service

⊠ Wilderness Area



Datum: NAD 83



North arrow and scale bar (0, 875, 1,750 Feet).  
NorCal 1 GIS  
9/17/2018  
22:49 hrs  
Scale: 1:24,000

# Mendocino Complex

CA-MEU-008674

September 18, 2018

Page 14 of 21

IAP Branch II

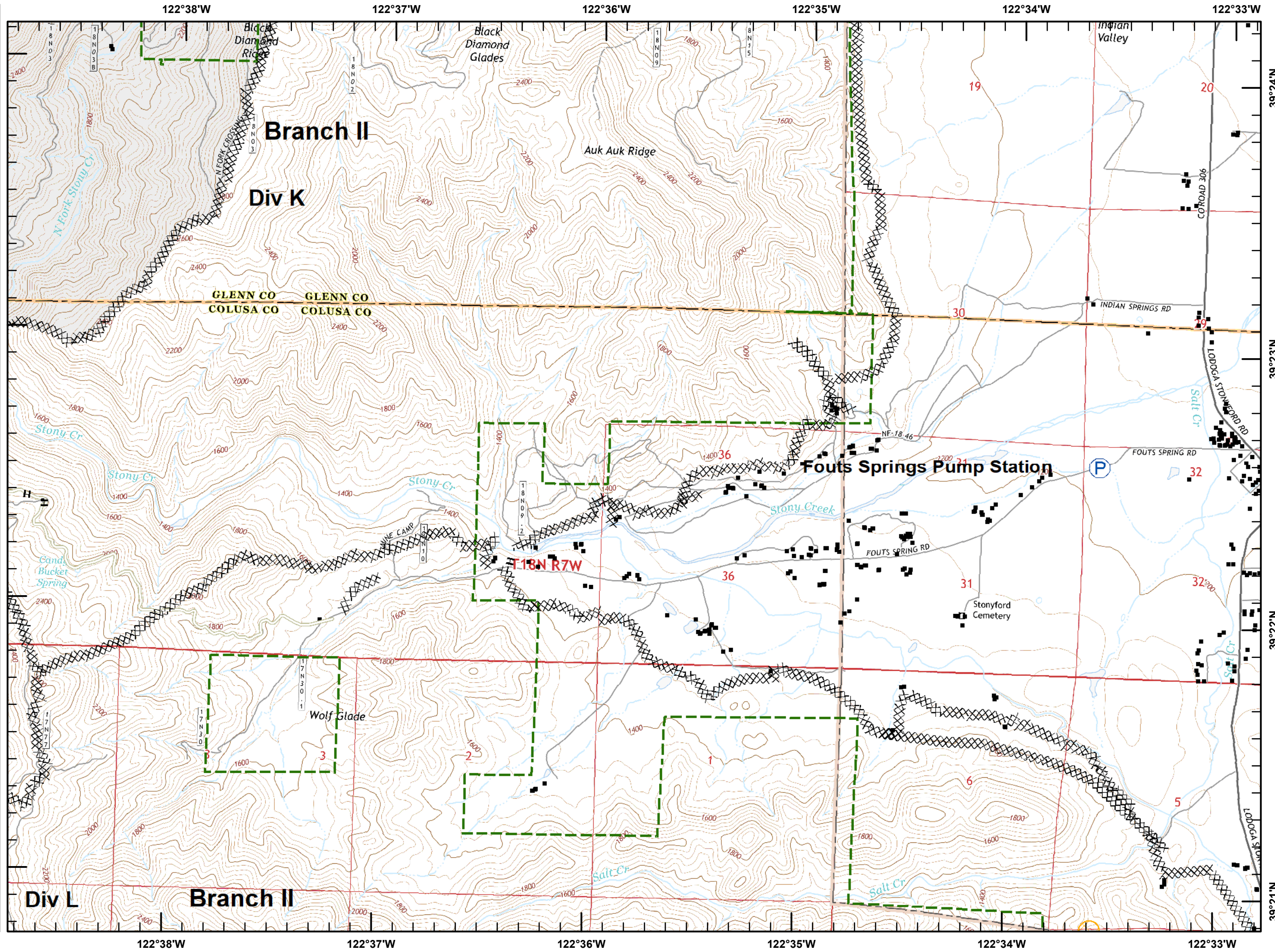
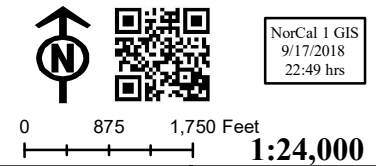
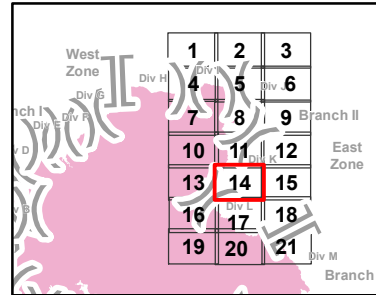


Structures (USFS)

USDA Forest Service

Equipment Avoidance Areas

Datum: NAD 83



# Mendocino Complex

CA-MEU-008674

September 18, 2018

Page 15 of 21

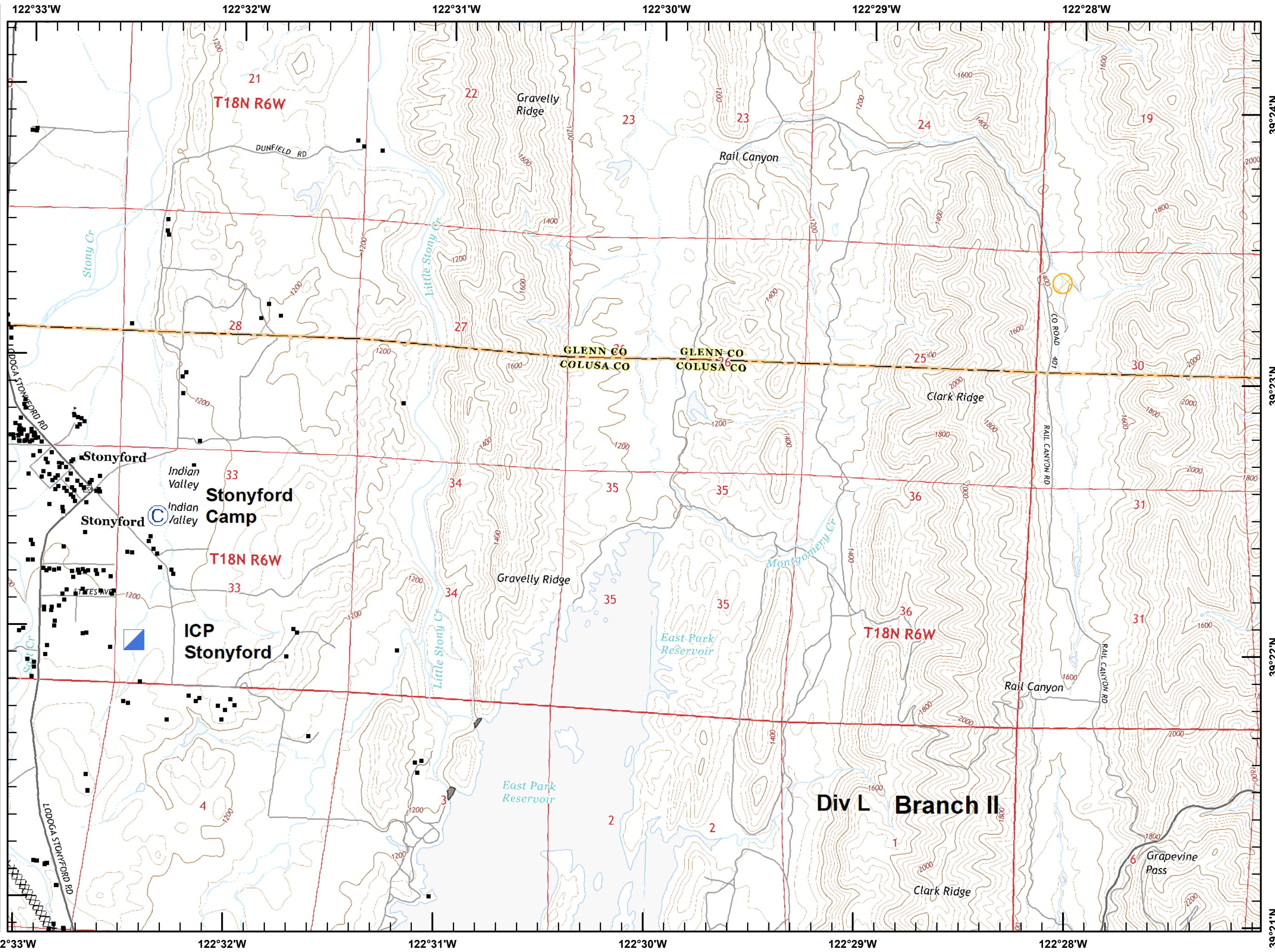
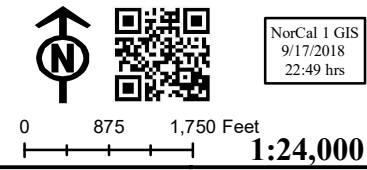
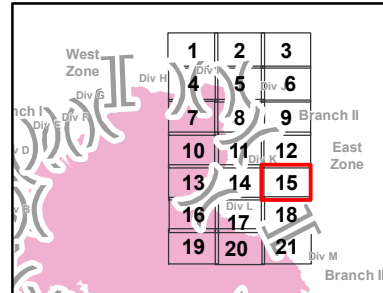
IAP Branch II



■ Structures (USFS)

▨ Equipment Avoidance Areas

Datum: NAD 83



# Mendocino Complex

CA-MEU-008674

September 18, 2018

Page 16 of 21

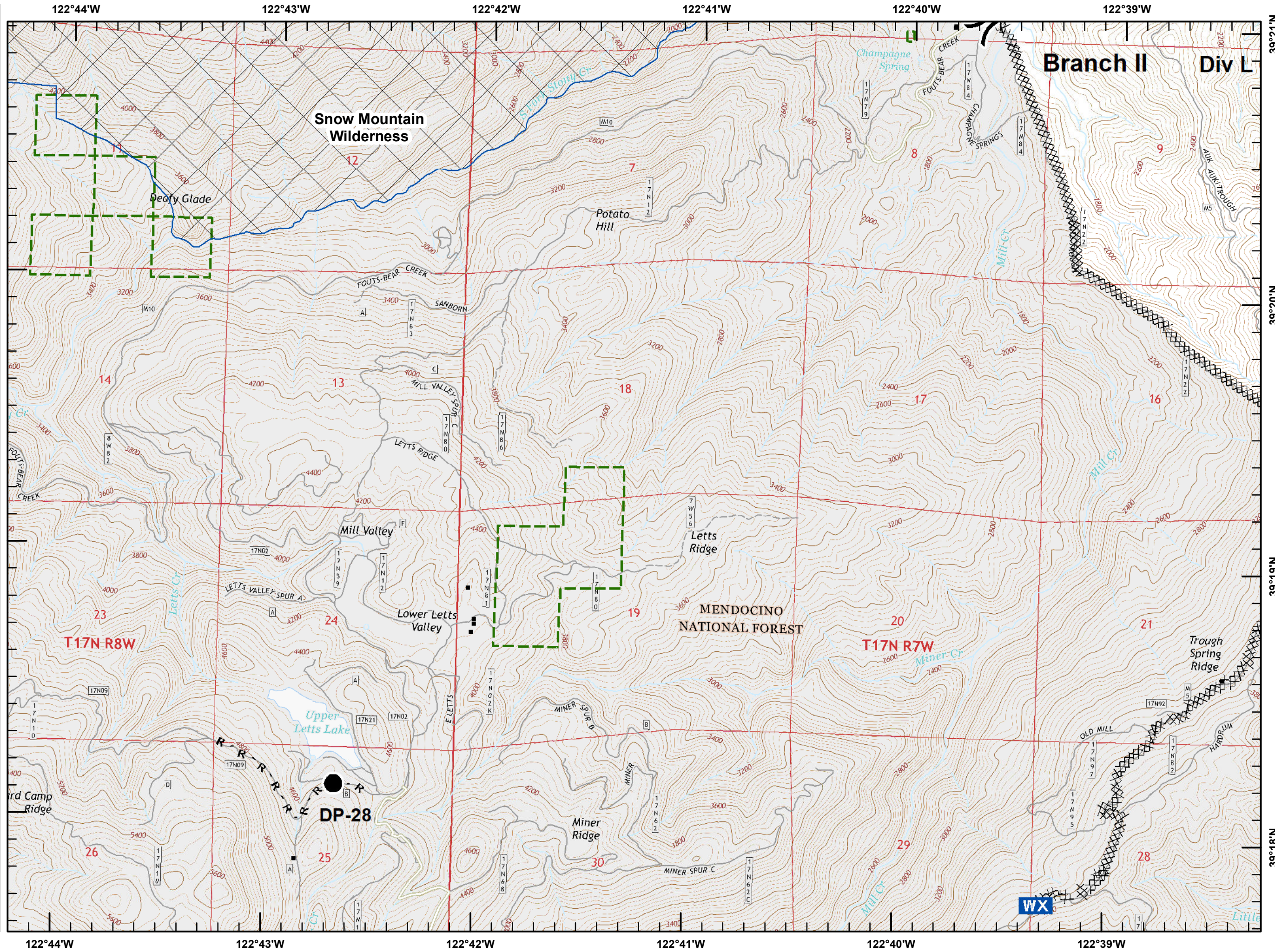
IAP Branch II



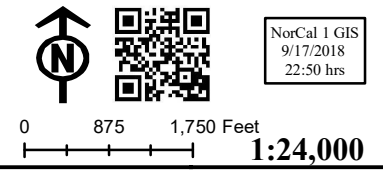
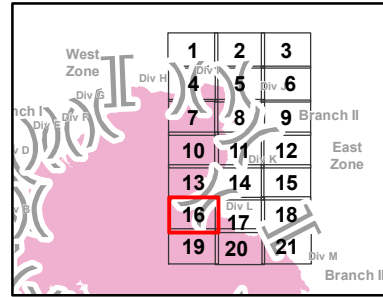
Structures (USFS)

USDA Forest Service

Wilderness Area



Datum: NAD 83





# Mendocino Complex

CA-MEU-008674

September 18, 2018

Page 17 of 21

## IAP Branch II

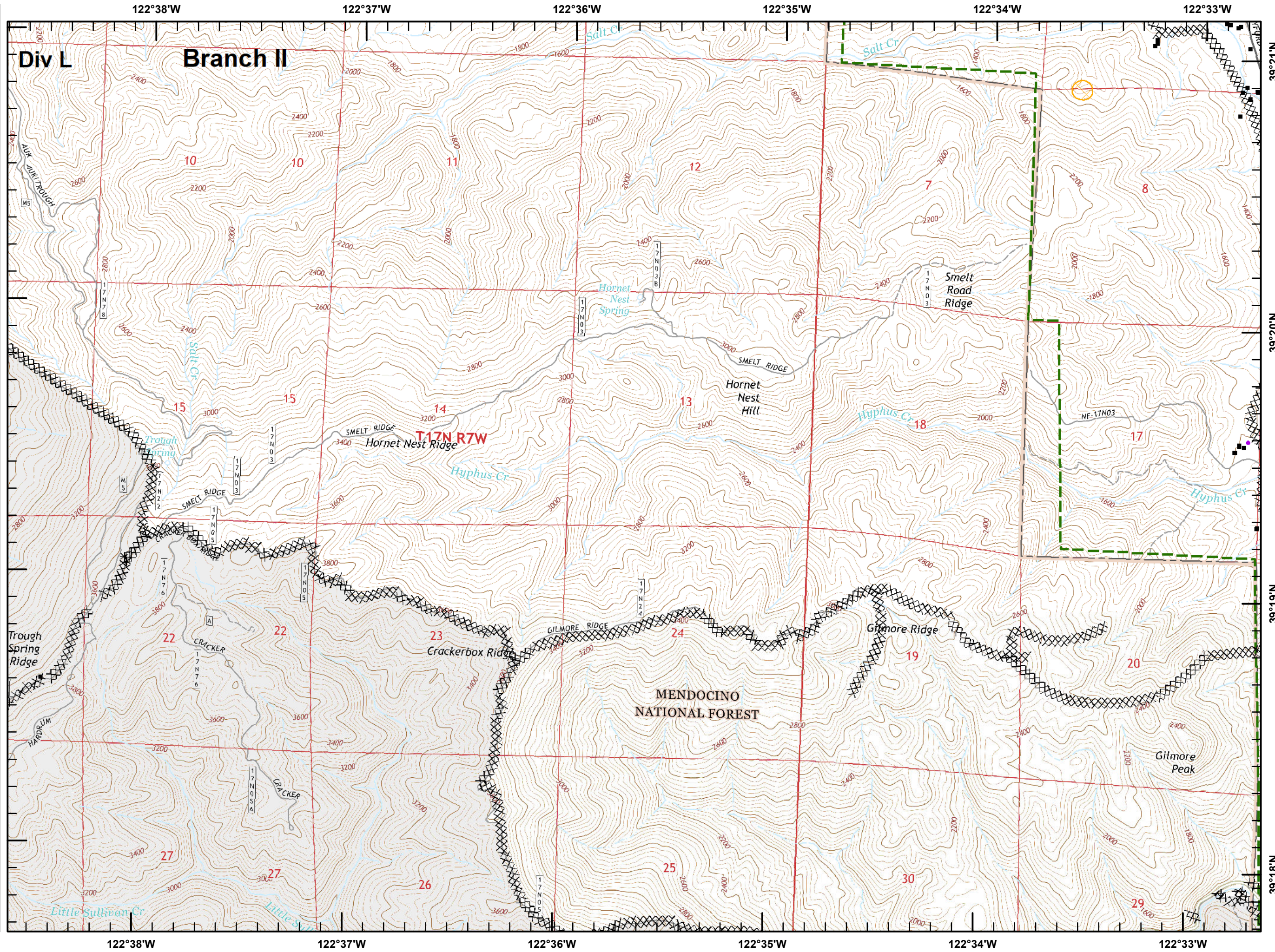
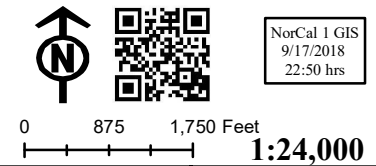
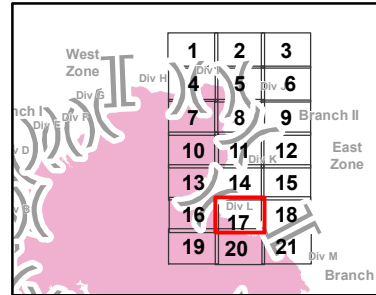


Structures (USFS)

USDA Forest Service

Equipment Avoidance Areas

Datum: NAD 83



# Mendocino Complex

CA-MEU-008674

September 18, 2018

Page 18 of 21

## IAP Branch II

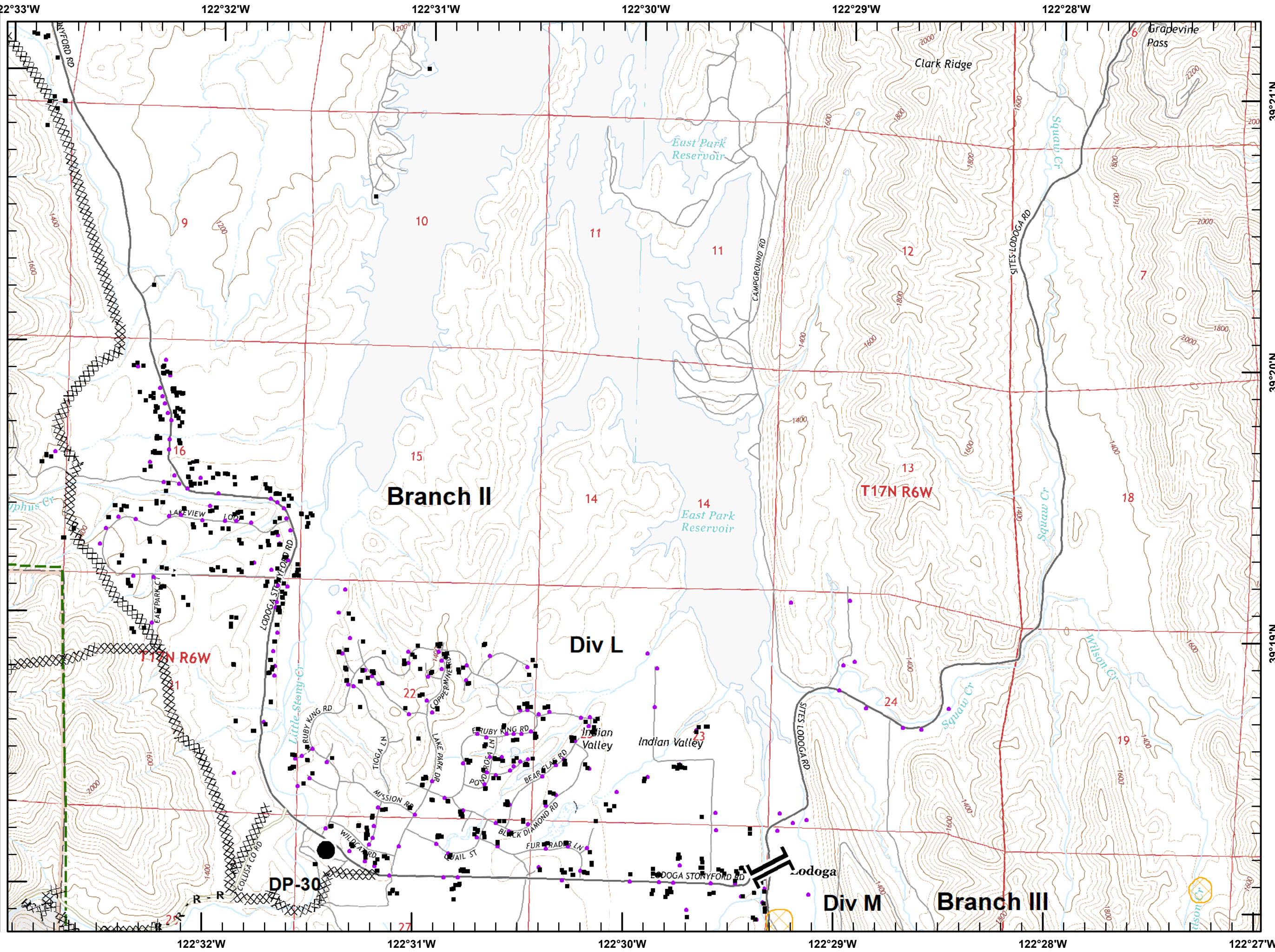
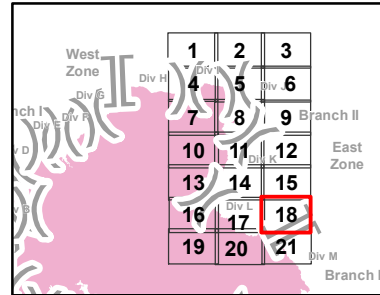


Structures (USFS)

USDA Forest Service

Equipment Avoidance Areas

Datum: NAD 83



# Mendocino Complex

CA-MEU-008674

September 18, 2018

Page 19 of 21

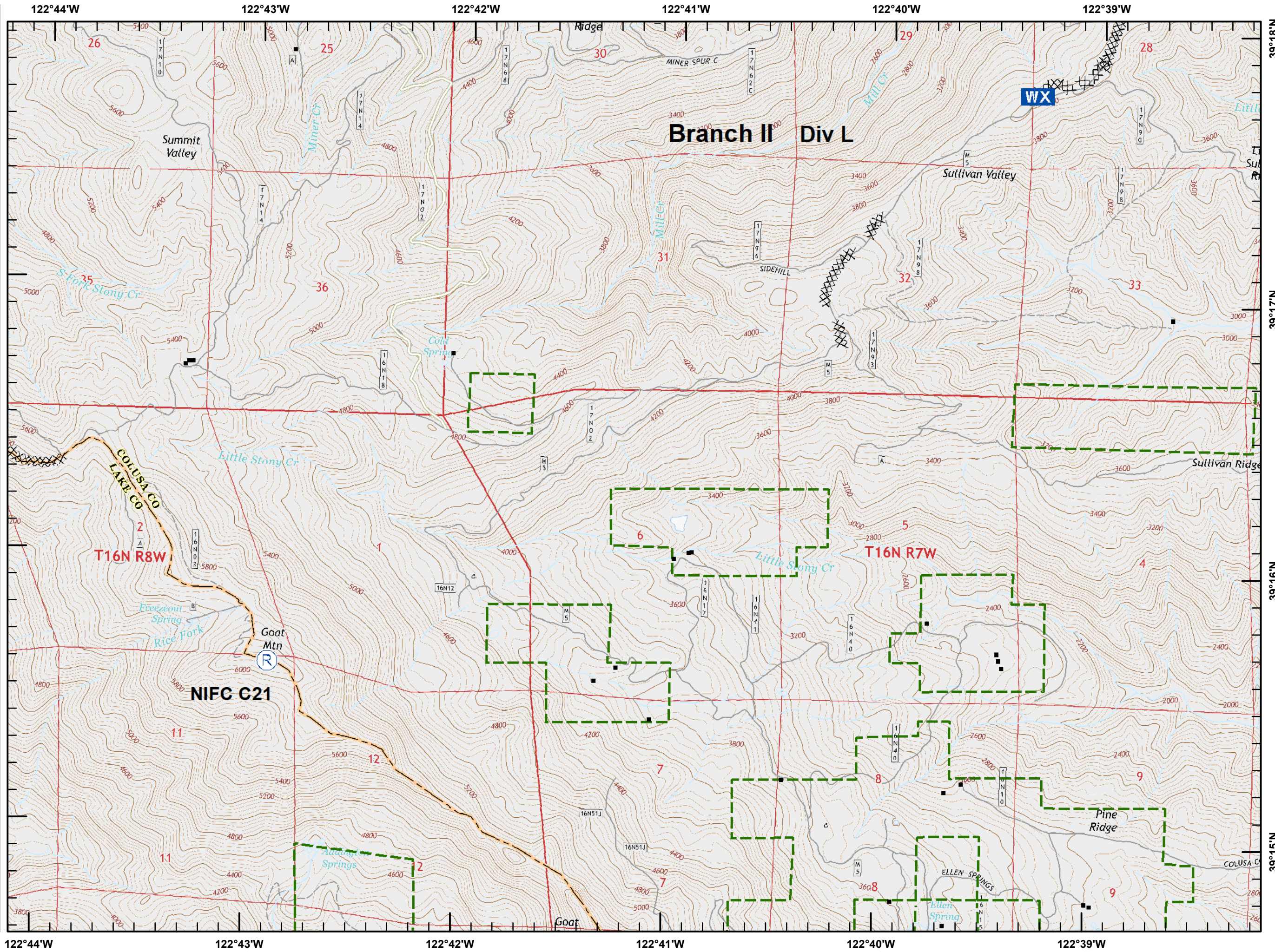
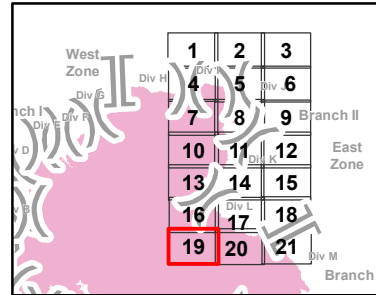
IAP Branch II



Structures (USFS)

USDA Forest Service

Datum: NAD 83



# Mendocino Complex

CA-MEU-008674

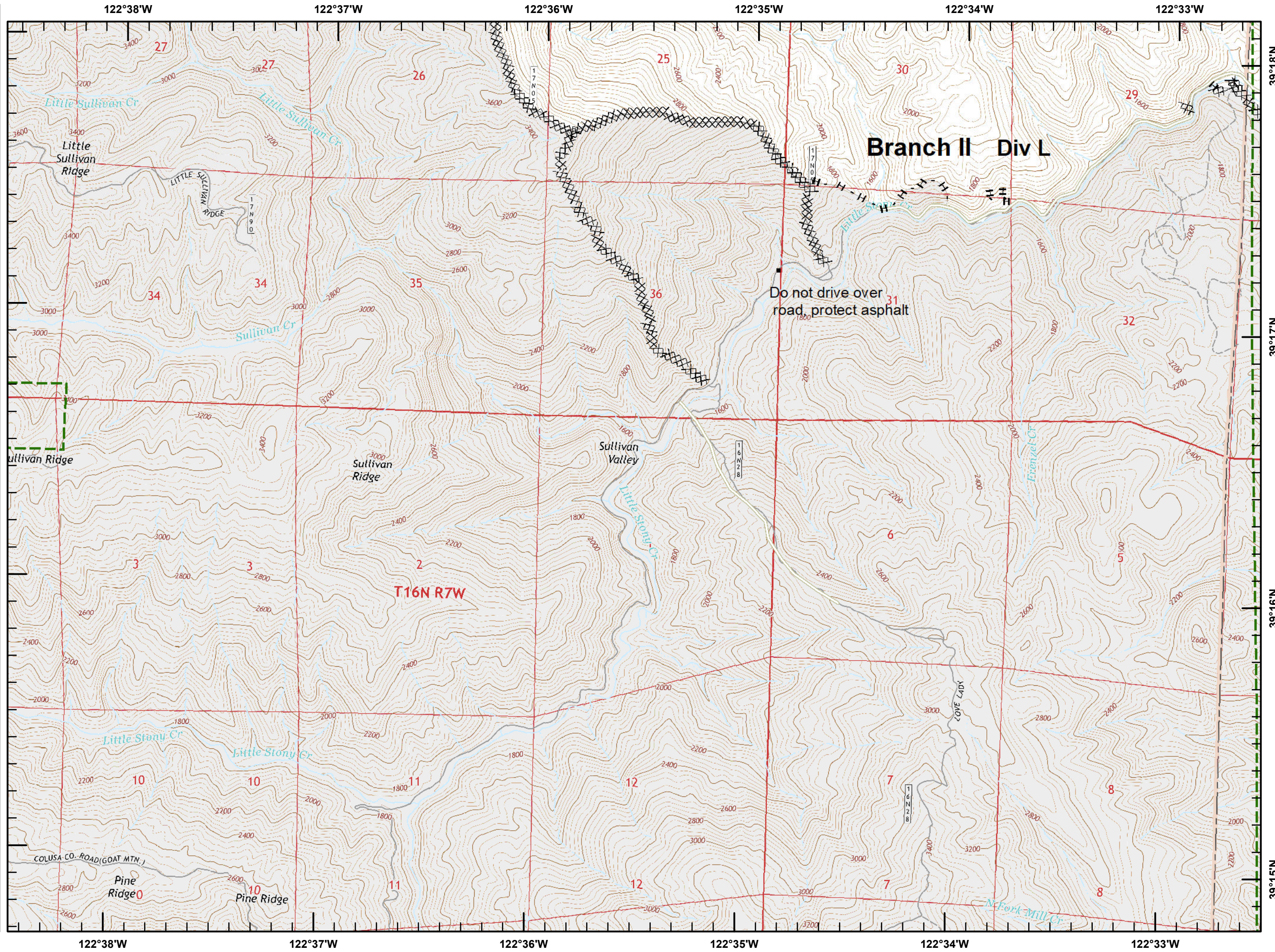
September 18, 2018

Page 20 of 21

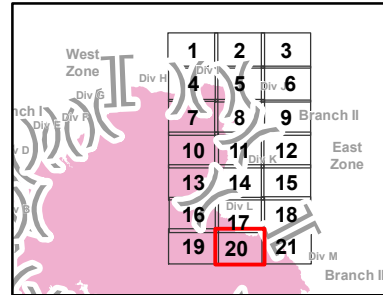
IAP Branch II



USDA Forest Service



Datum: NAD 83



NorCal 1 GIS  
9/17/2018  
22:51 hrs

0 875 1,750 Feet  
1:24,000

# Mendocino Complex

CA-MEU-008674

September 18, 2018

Page 21 of 21

IAP Branch II



■ Structures (USFS)

▭ USDA Forest Service

⊠ Equipment Avoidance Areas

Datum: NAD 83

