

Mendocino Complex

CA-MEU-008674

September 25, 2018

Page 1 of 21

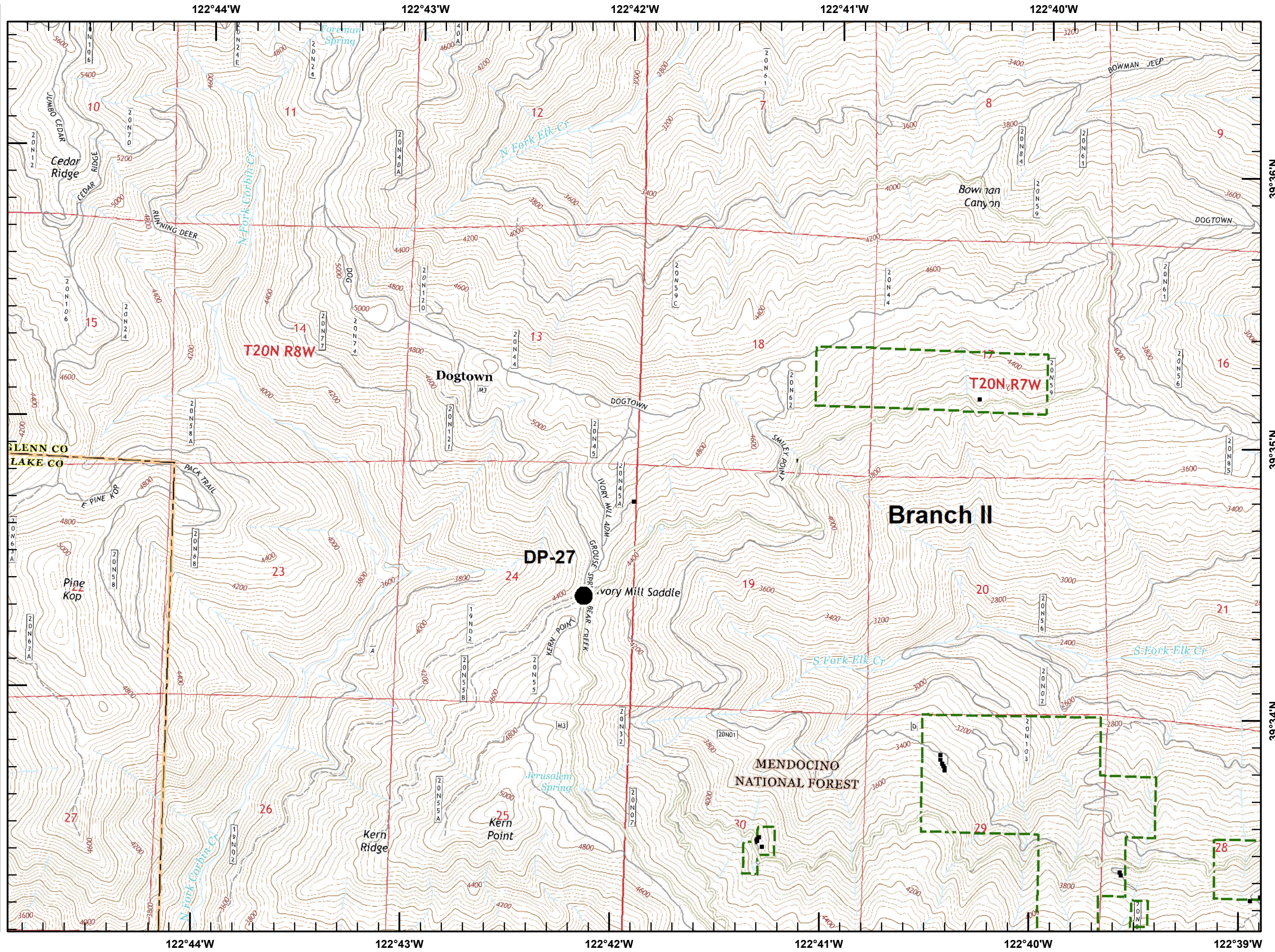
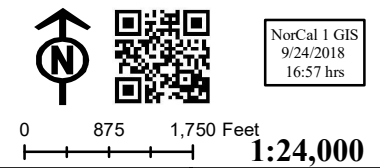
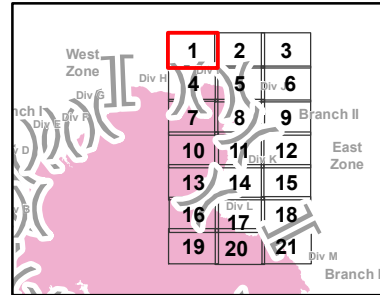
IAP Branch II



■ Structures (USFS)

▭ USDA Forest Service

Datum: NAD 83



Mendocino Complex

CA-MEU-008674

September 25, 2018

Page 2 of 21

IAP Branch II

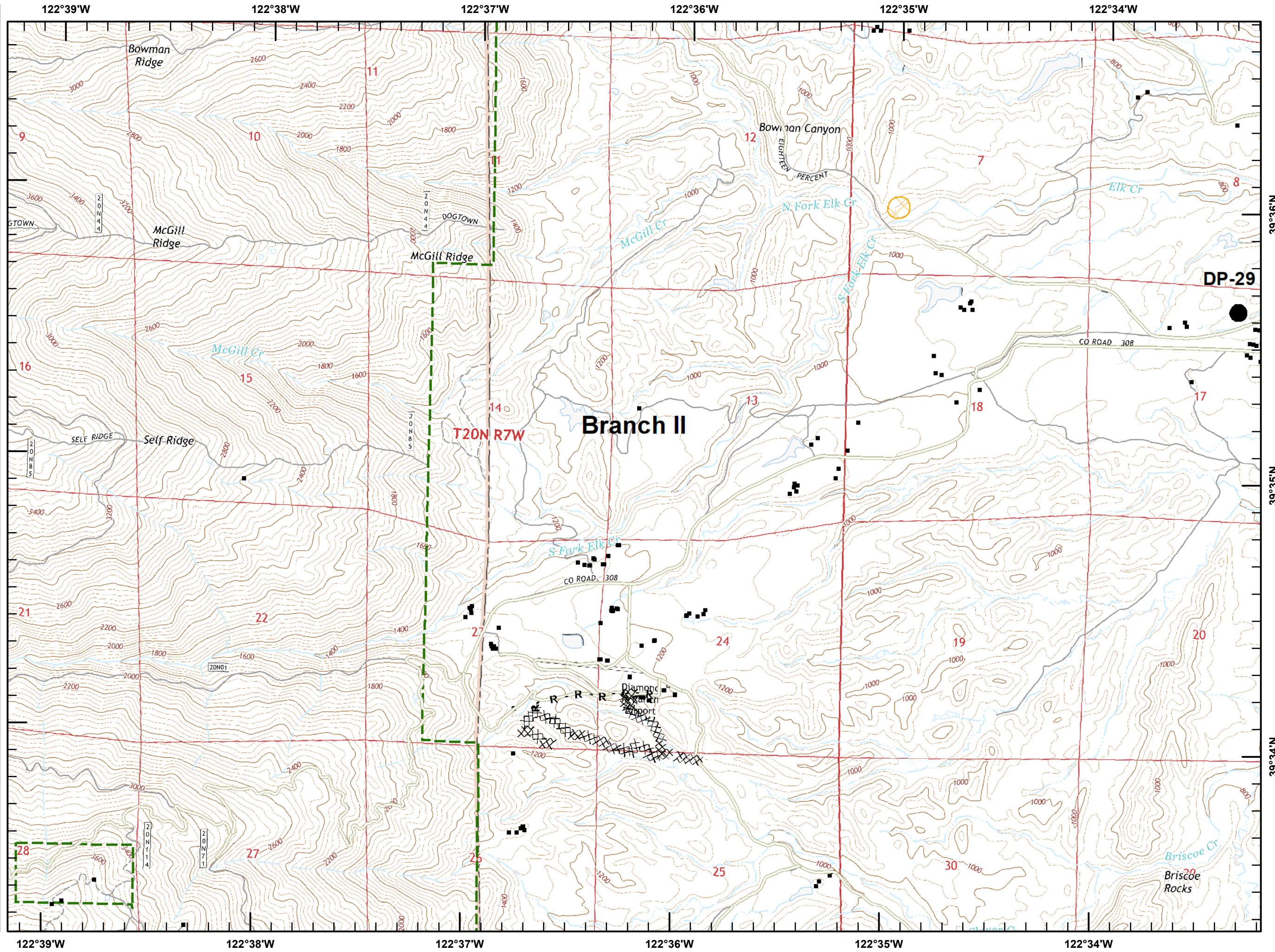
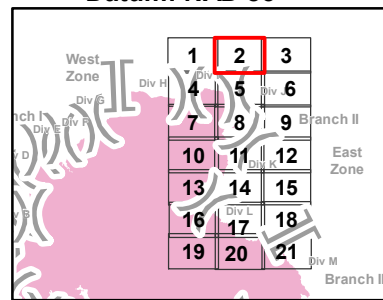


■ Structures (USFS)

▭ USDA Forest Service

⊠ Equipment Avoidance Areas

Datum: NAD 83



Mendocino Complex

CA-MEU-008674

September 25, 2018

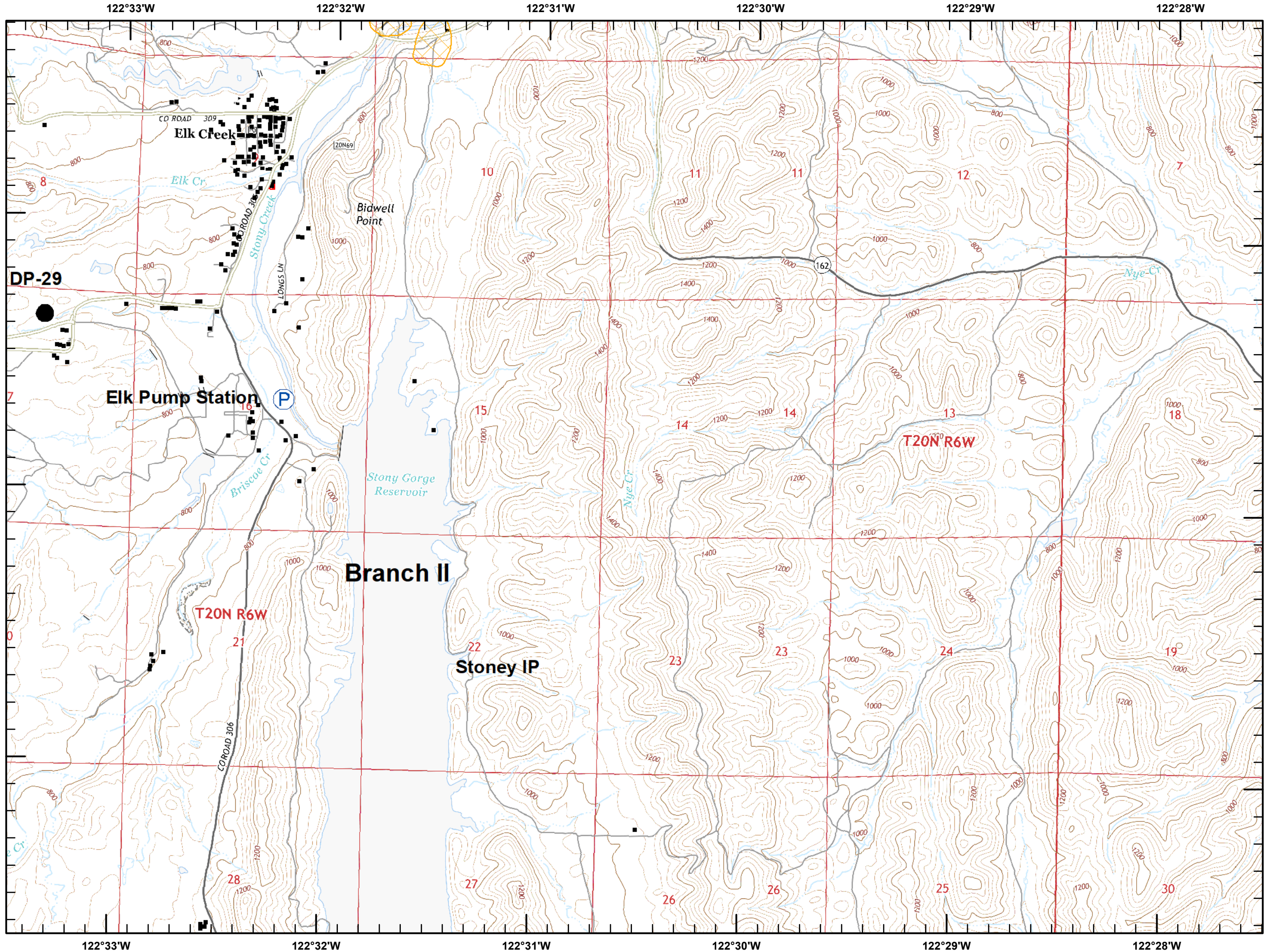
Page 3 of 21

IAP Branch II

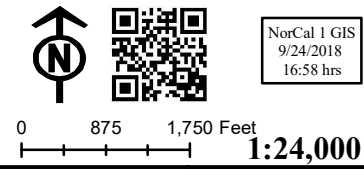
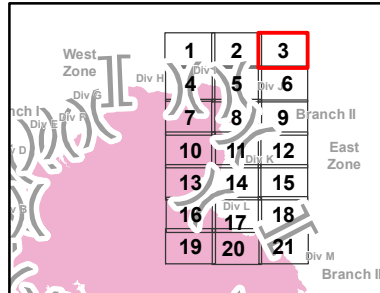


■ Structures (USFS)

▨ Equipment Avoidance Areas



Datum: NAD 83



Mendocino Complex

CA-MEU-008674

September 25, 2018

Page 4 of 21

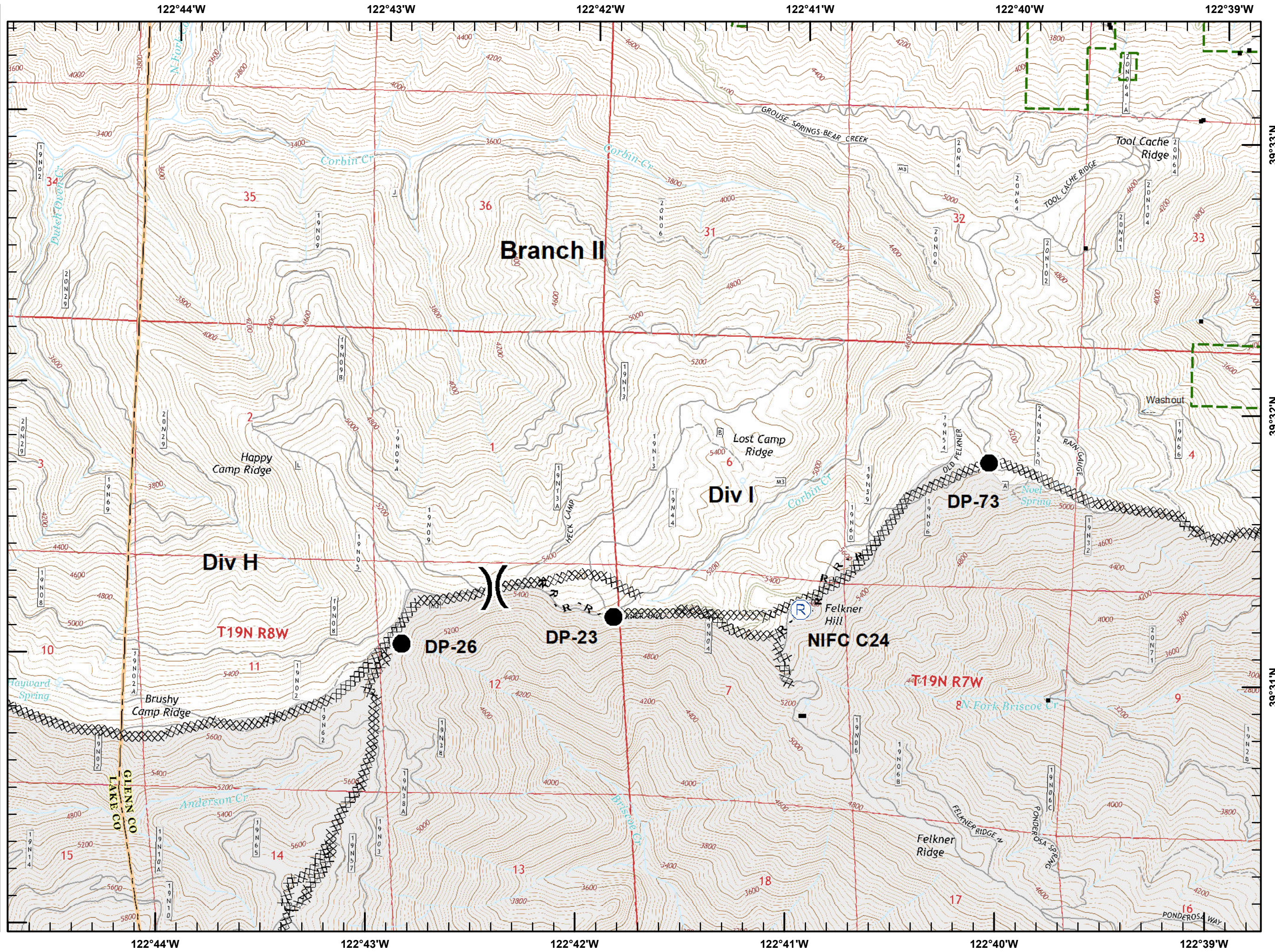
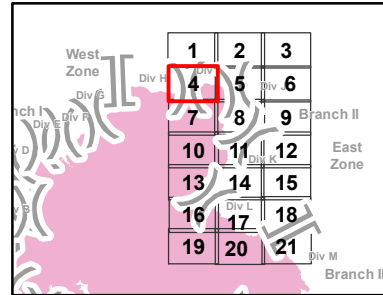
IAP Branch II



■ Structures (USFS)

▭ USDA Forest Service

Datum: NAD 83



Mendocino Complex

CA-MEU-008674

September 25, 2018

Page 5 of 21

IAP Branch II

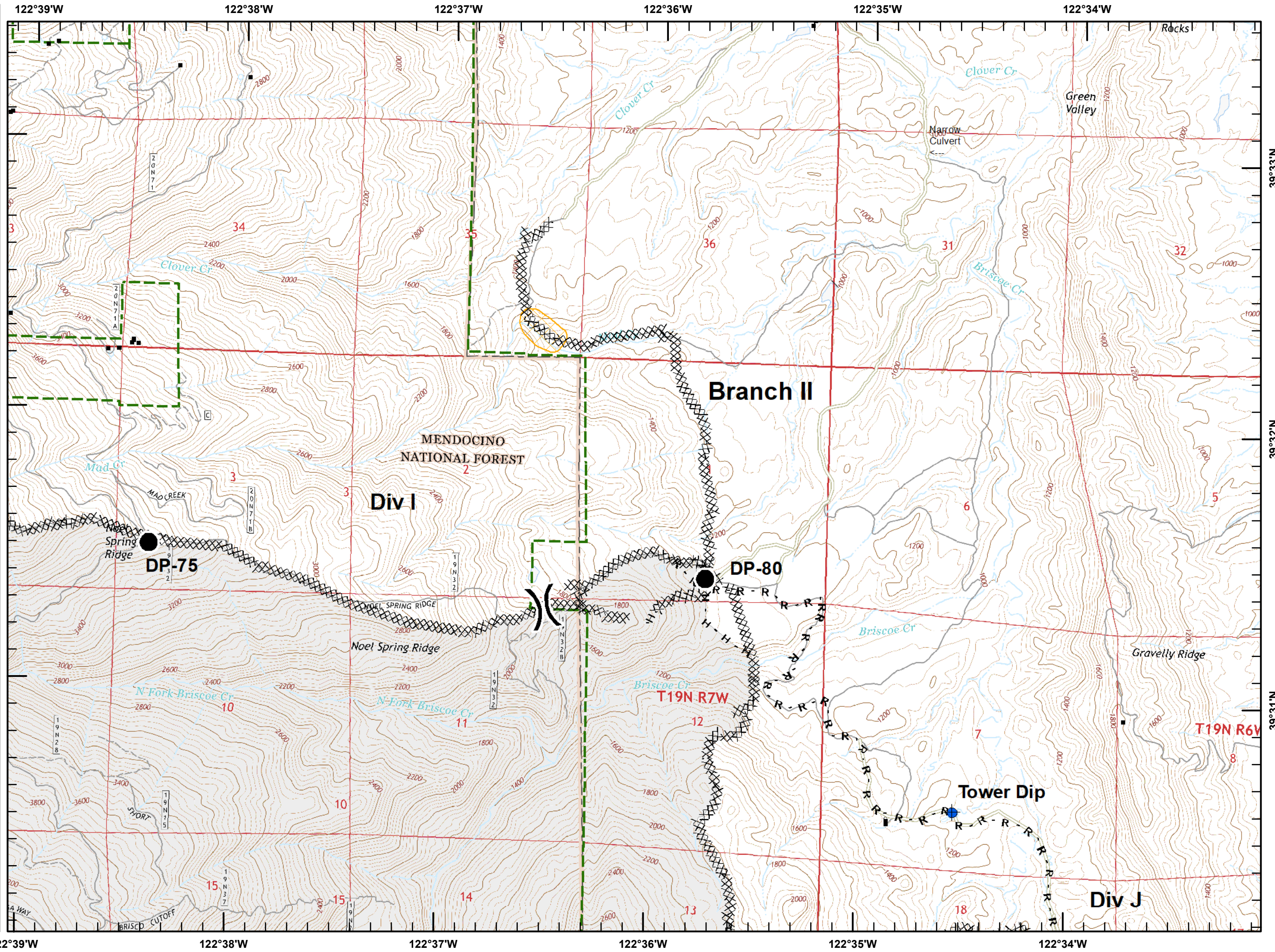
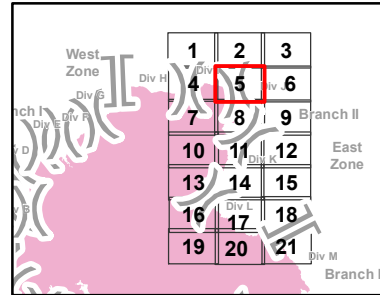


■ Structures (USFS)

▭ USDA Forest Service

⊠ Equipment Avoidance Areas

Datum: NAD 83



Mendocino Complex

CA-MEU-008674

September 25, 2018

Page 6 of 21

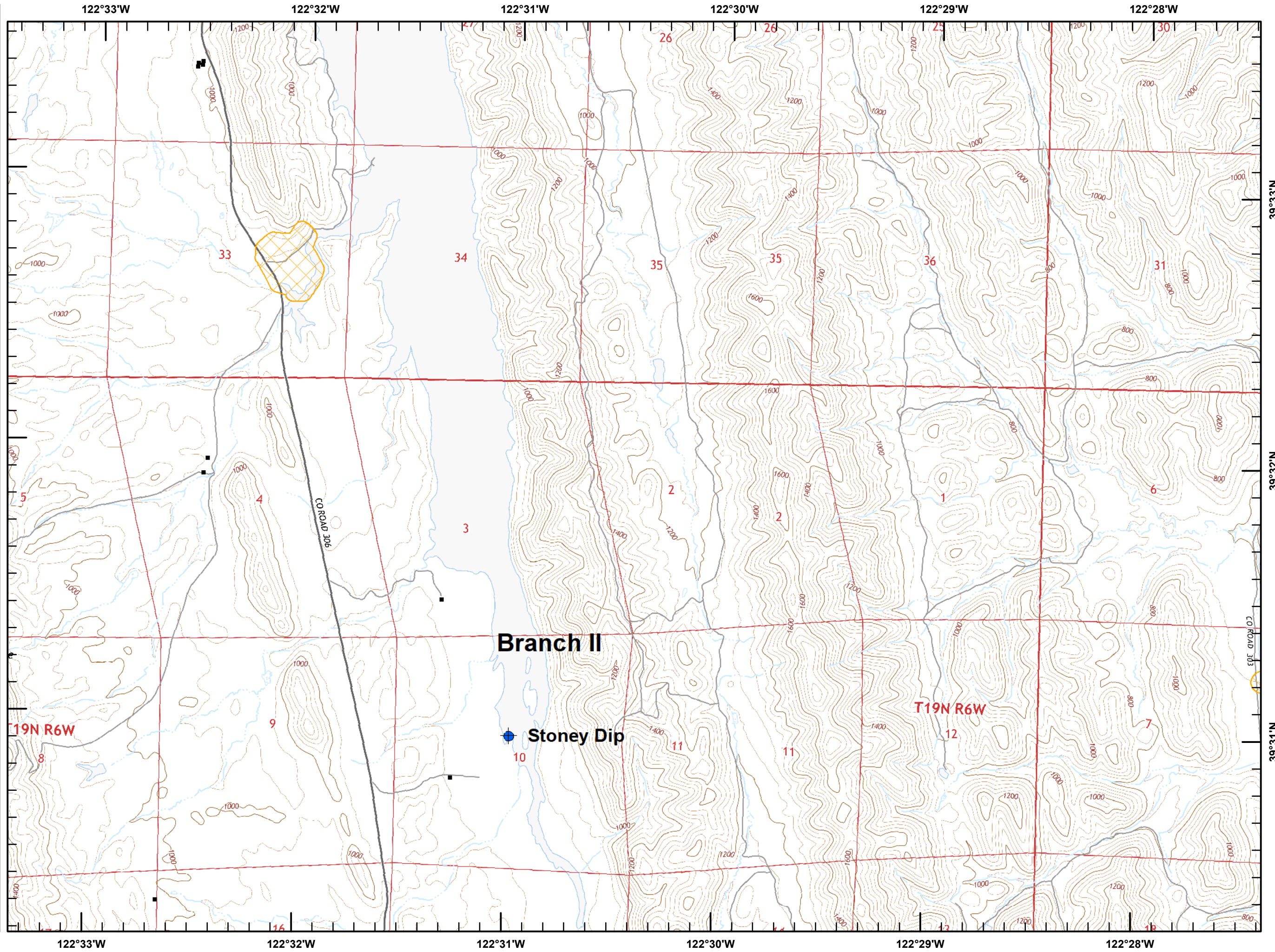
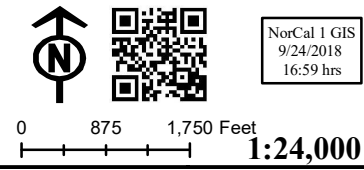
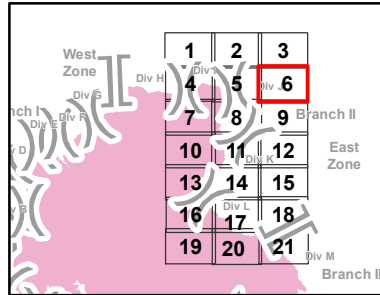
IAP Branch II



■ Structures (USFS)

▨ Equipment Avoidance Areas

Datum: NAD 83



Mendocino Complex

CA-MEU-008674

September 25, 2018

Page 7 of 21

IAP Branch II

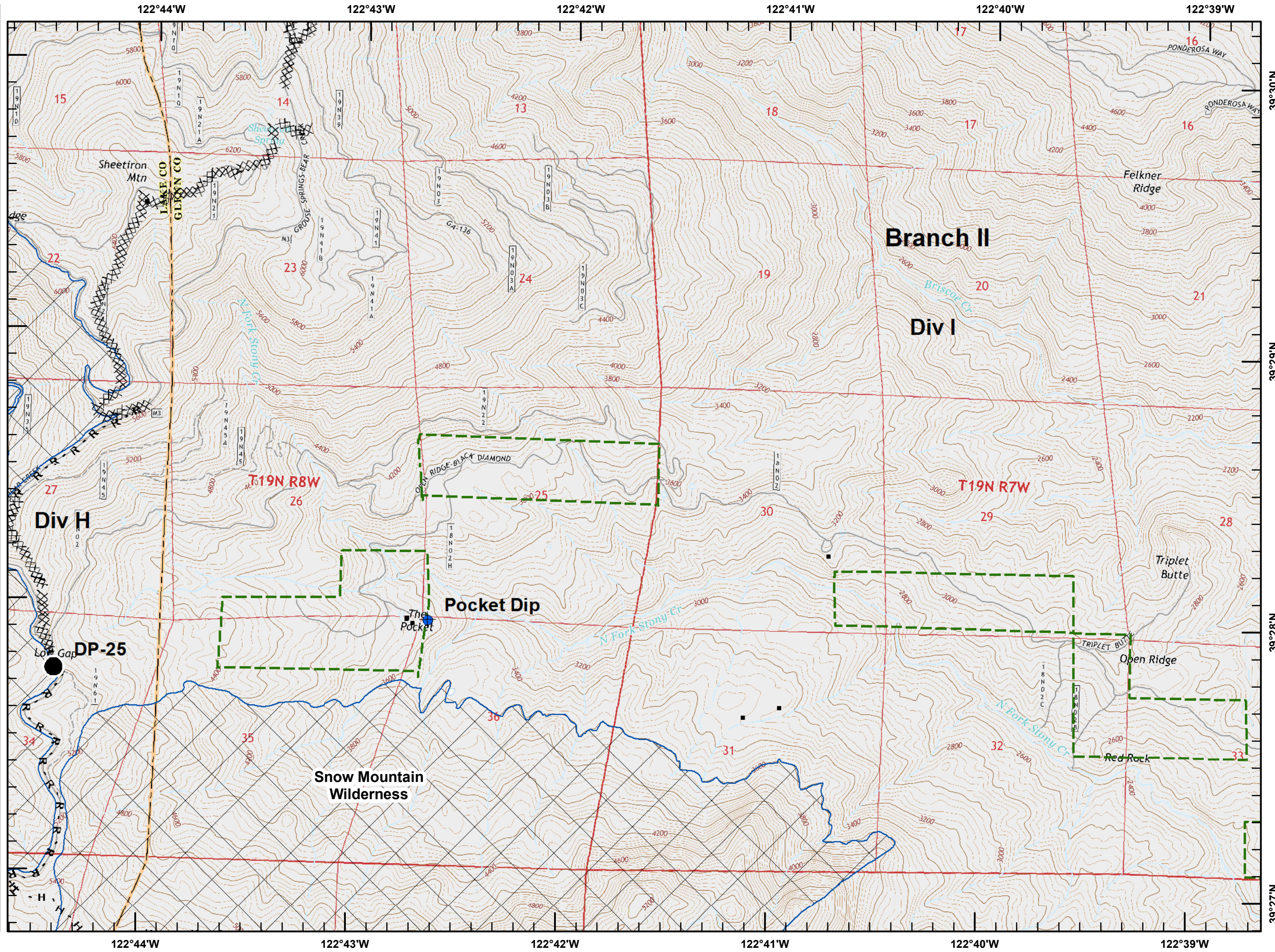
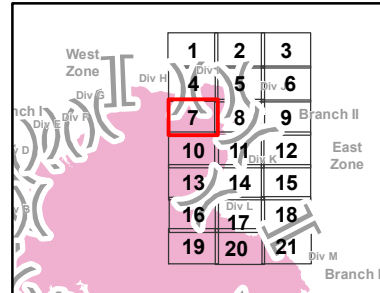


■ Structures (USFS)

▭ USDA Forest Service

▭ Wilderness Area

Datum: NAD 83



Mendocino Complex

CA-MEU-008674

September 25, 2018

Page 8 of 21

IAP Branch II

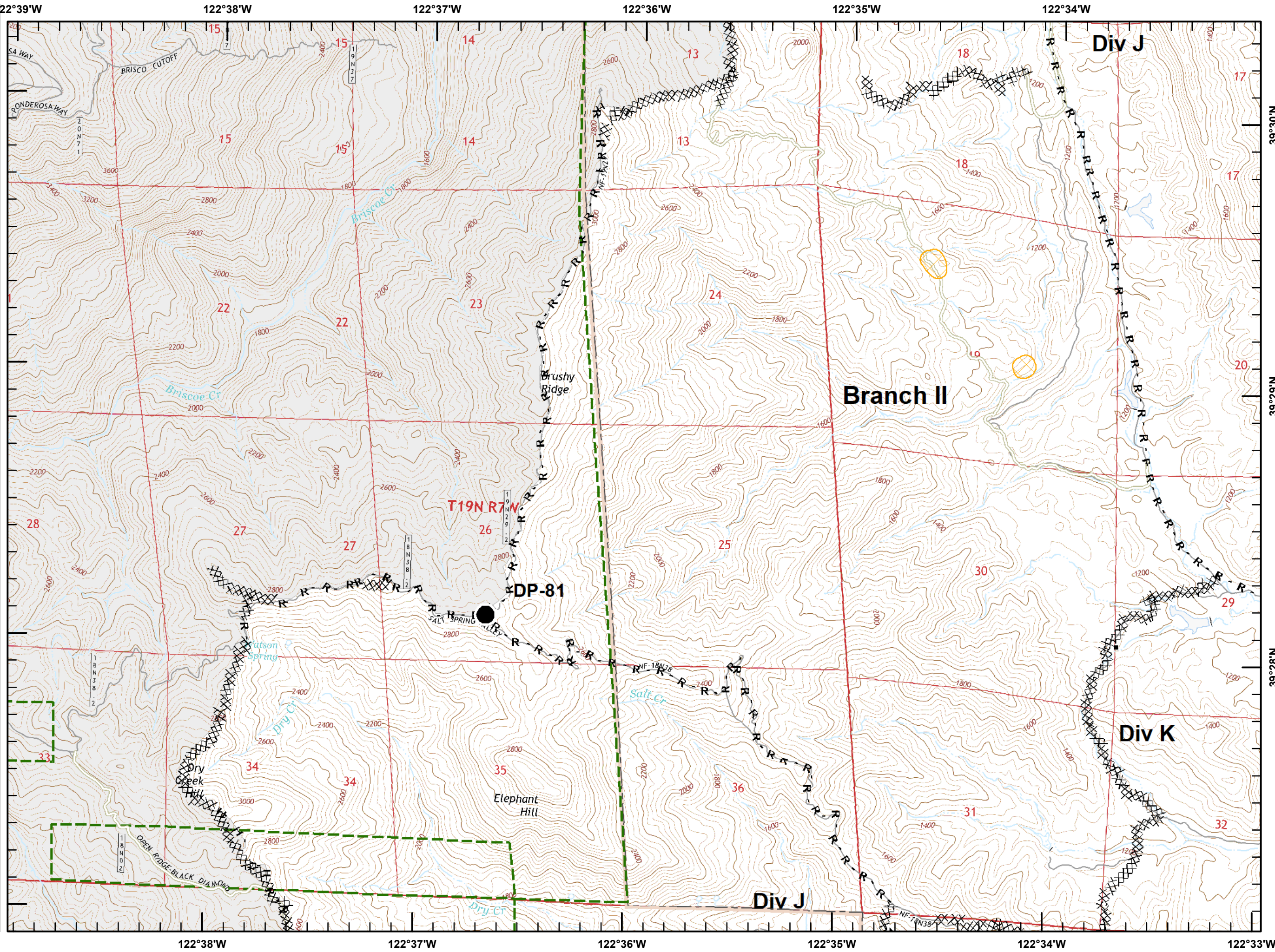
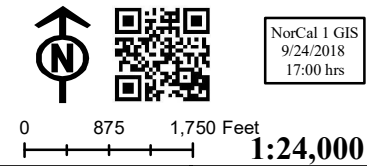
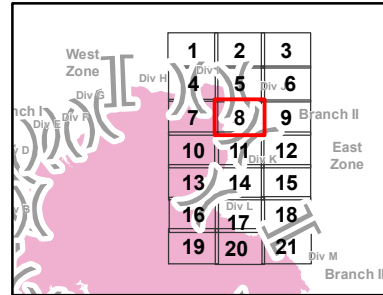


Structures (USFS)

USDA Forest Service

Equipment Avoidance Areas

Datum: NAD 83



Mendocino Complex

CA-MEU-008674

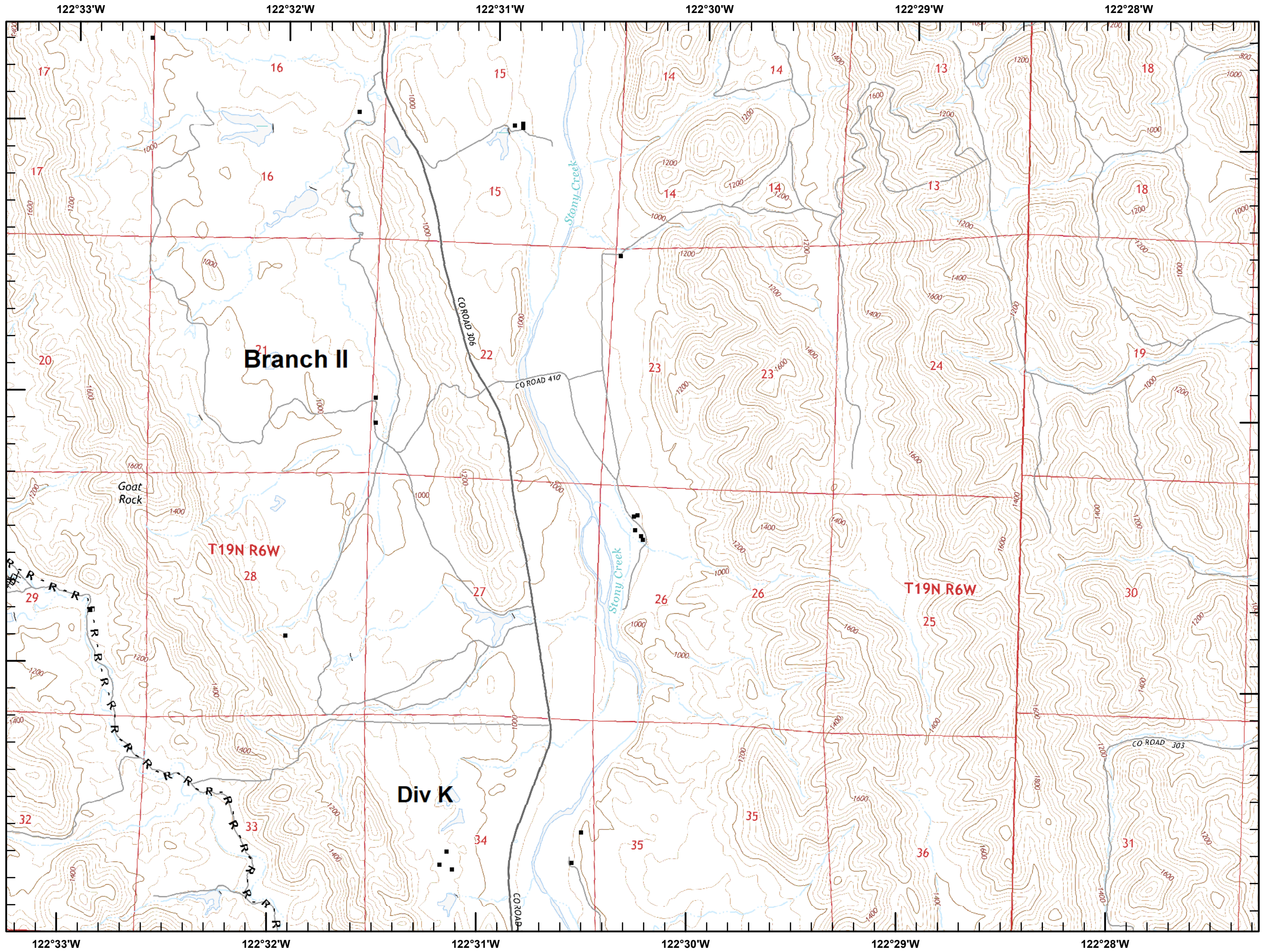
September 25, 2018

Page 9 of 21

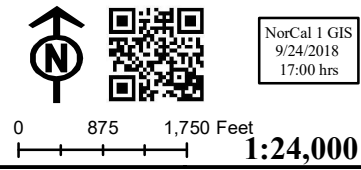
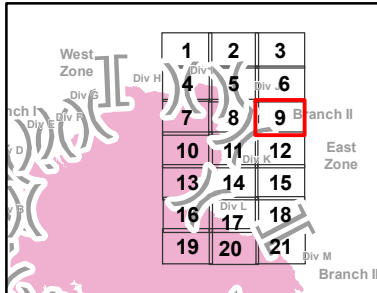
IAP Branch II



■ Structures (USFS)



Datum: NAD 83



Mendocino Complex

CA-MEU-008674

September 25, 2018

Page 10 of 21

IAP Branch II

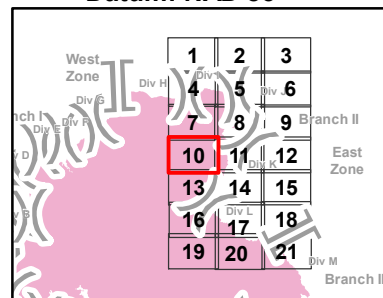


■ Structures (USFS)

▭ USDA Forest Service

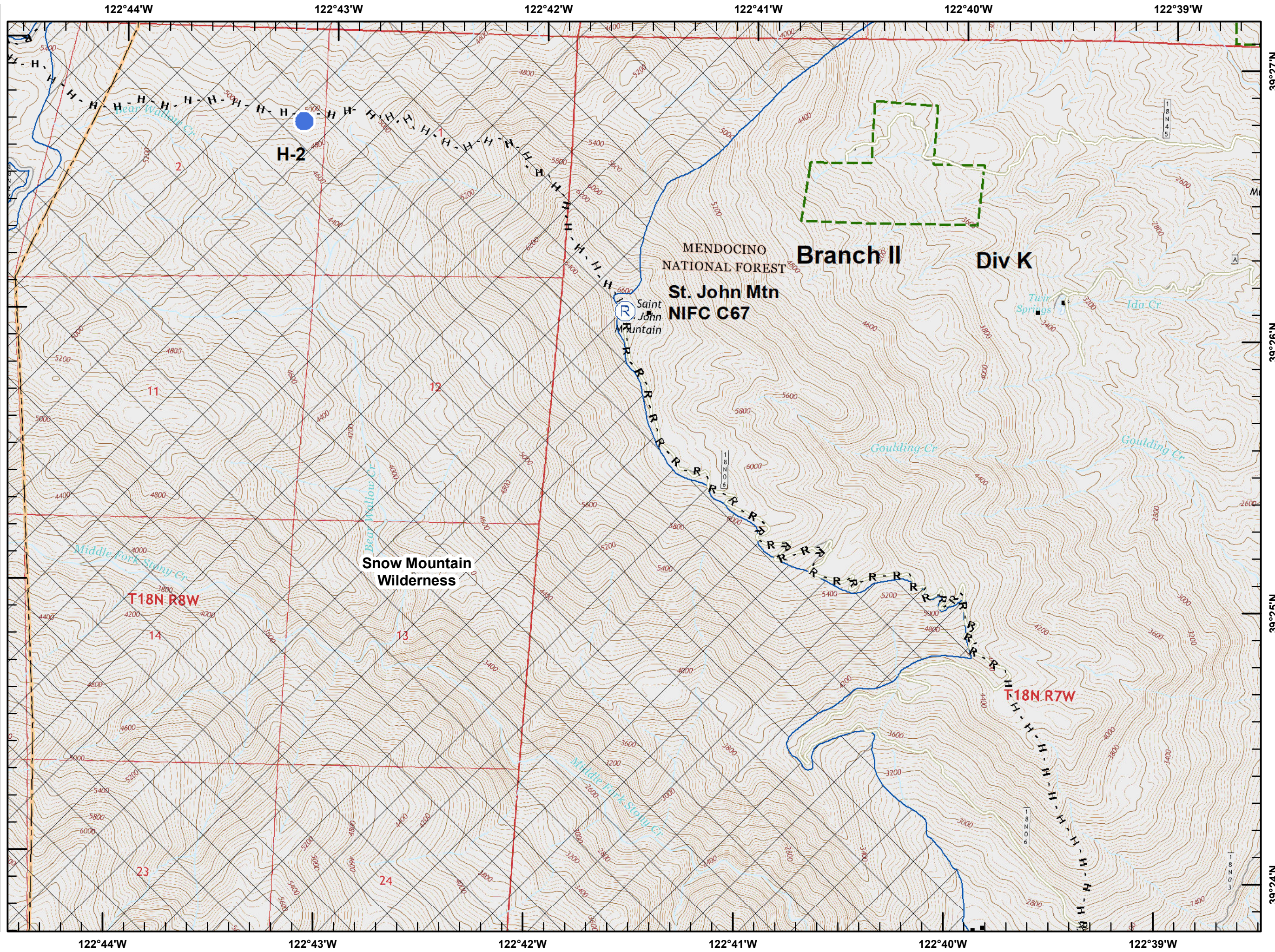
▭ Wilderness Area

Datum: NAD 83



NorCal 1 GIS
9/24/2018
17:00 hrs

0 875 1,750 Feet
1:24,000



Mendocino Complex

CA-MEU-008674

September 25, 2018

Page 11 of 21

IAP Branch II

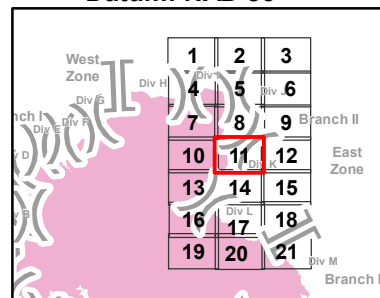


■ Structures (USFS)

▭ USDA Forest Service

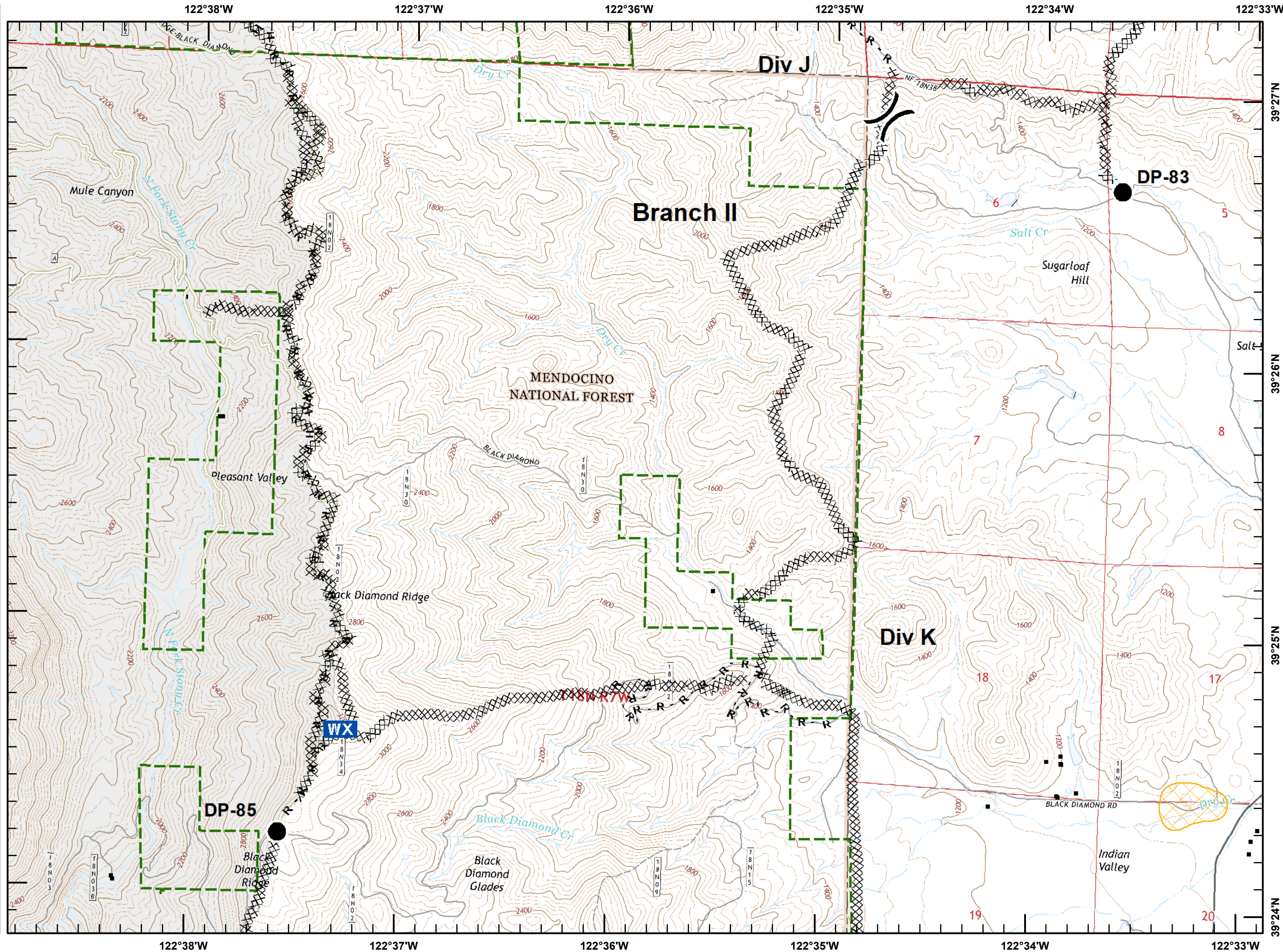
⊠ Equipment Avoidance Areas

Datum: NAD 83



NorCal 1 GIS
9/24/2018
17:01 hrs

0 875 1,750 Feet
1:24,000



Mendocino Complex

CA-MEU-008674

September 25, 2018

Page 12 of 21

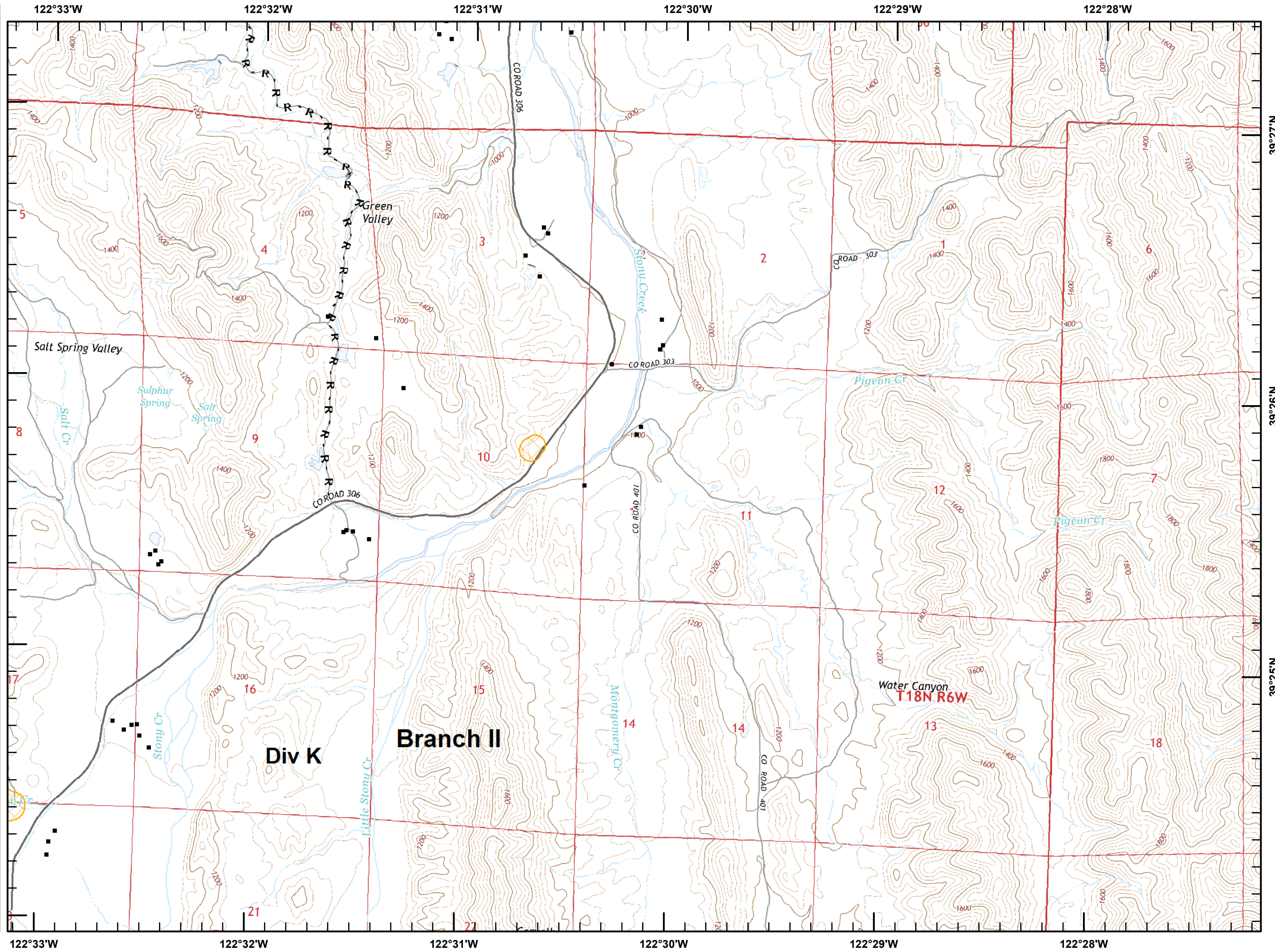
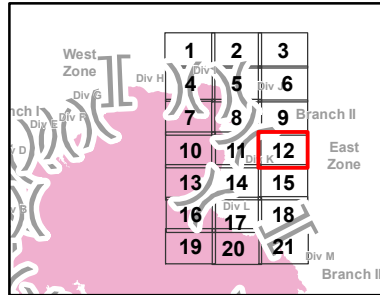
IAP Branch II



■ Structures (USFS)

▨ Equipment Avoidance Areas

Datum: NAD 83



Mendocino Complex

CA-MEU-008674

September 25, 2018

Page 13 of 21

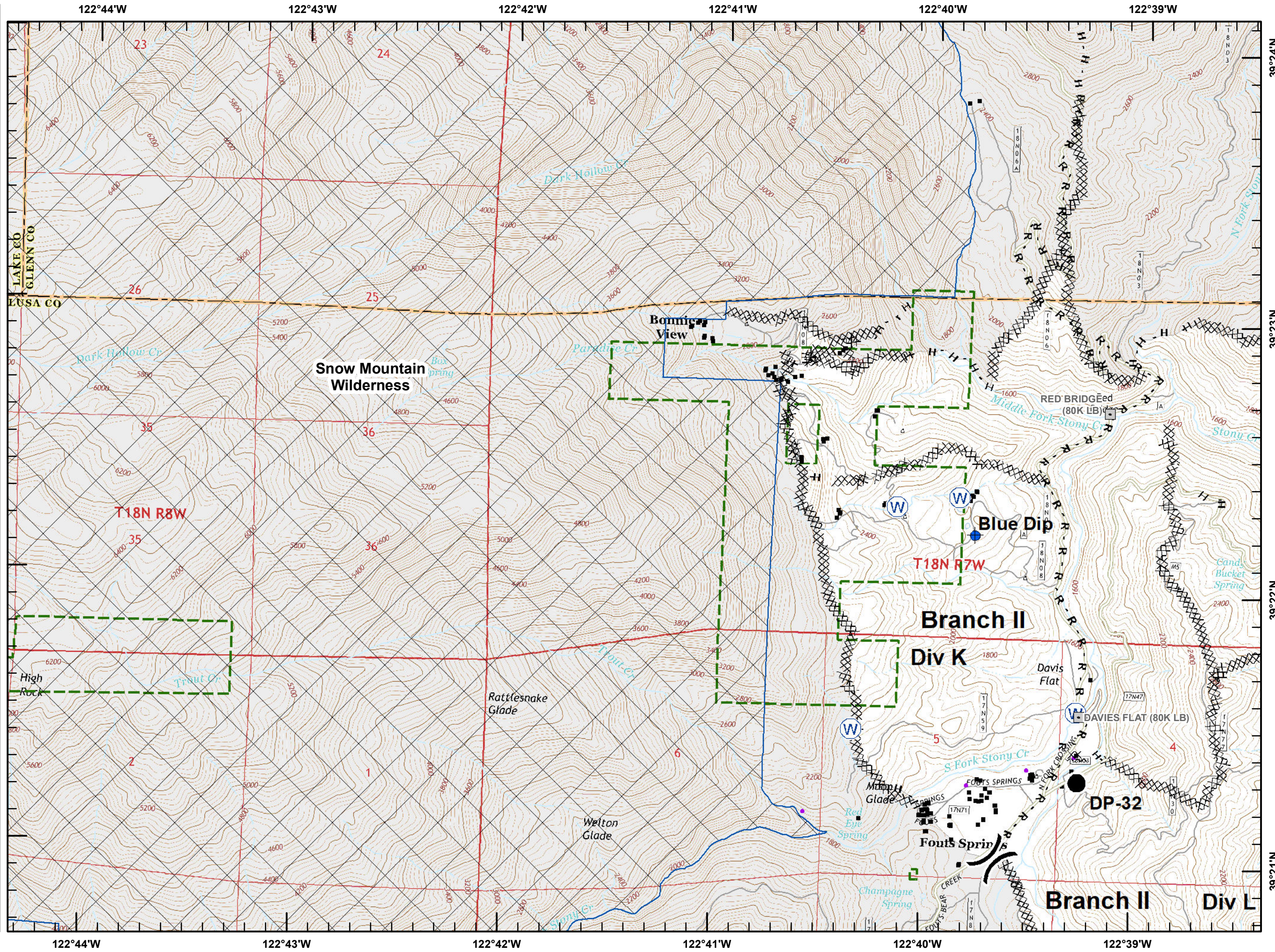
IAP Branch II



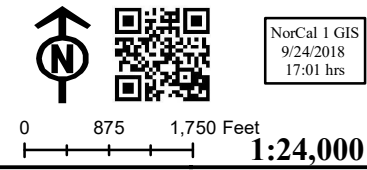
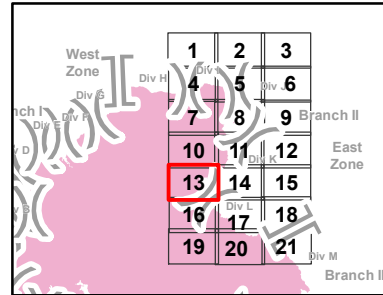
■ Structures (USFS)

▭ USDA Forest Service

▭ Wilderness Area



Datum: NAD 83



Mendocino Complex

CA-MEU-008674

September 25, 2018

Page 14 of 21

IAP Branch II

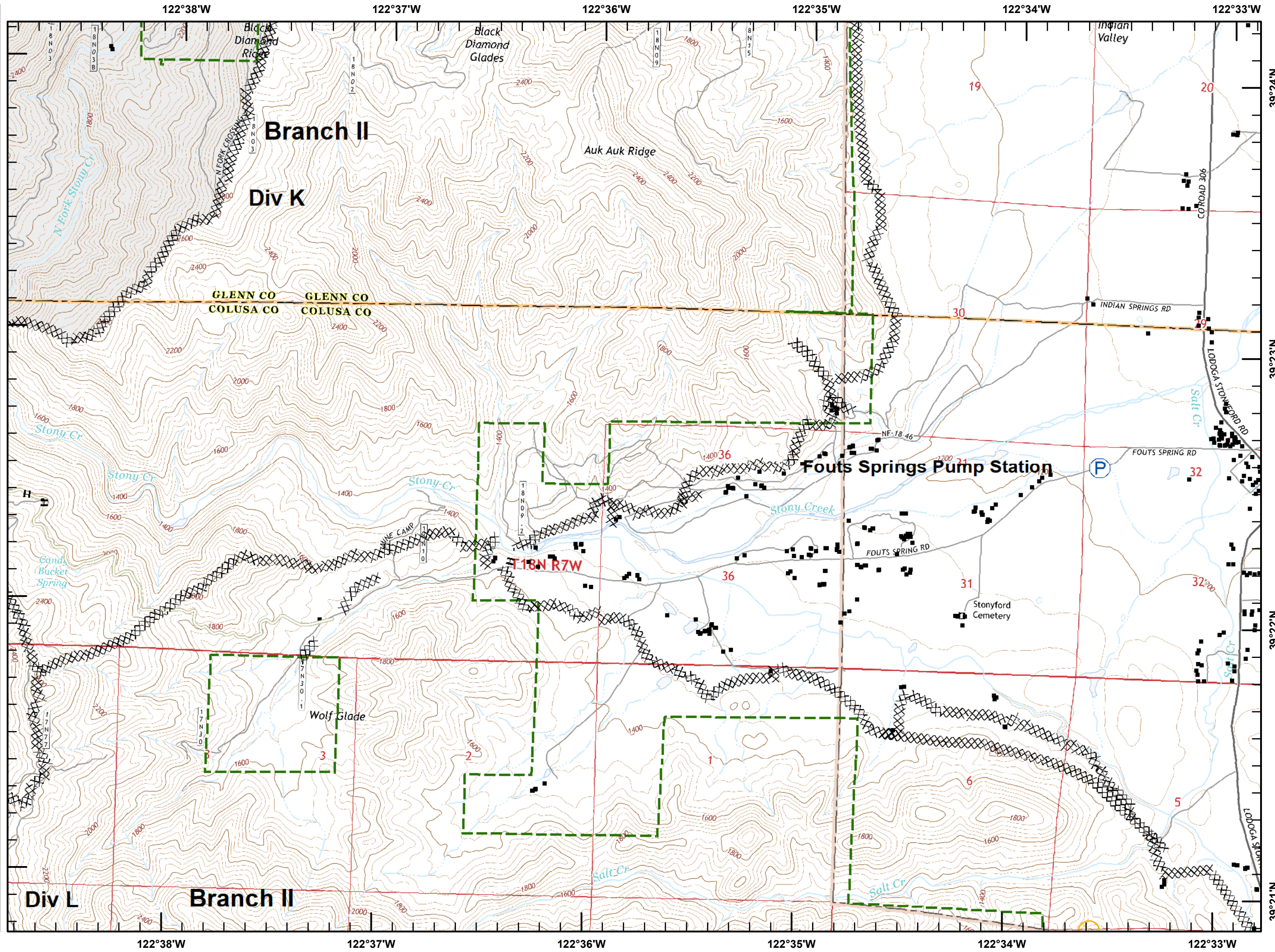
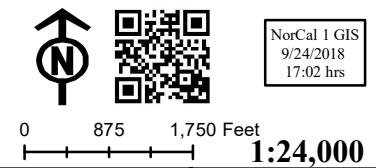
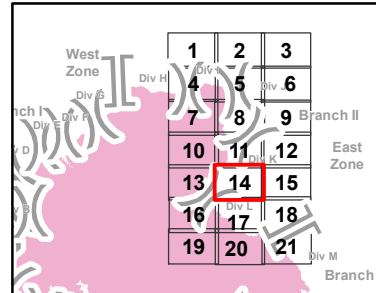


■ Structures (USFS)

▭ USDA Forest Service

⊠ Equipment Avoidance Areas

Datum: NAD 83



Mendocino Complex

CA-MEU-008674

September 25, 2018

Page 15 of 21

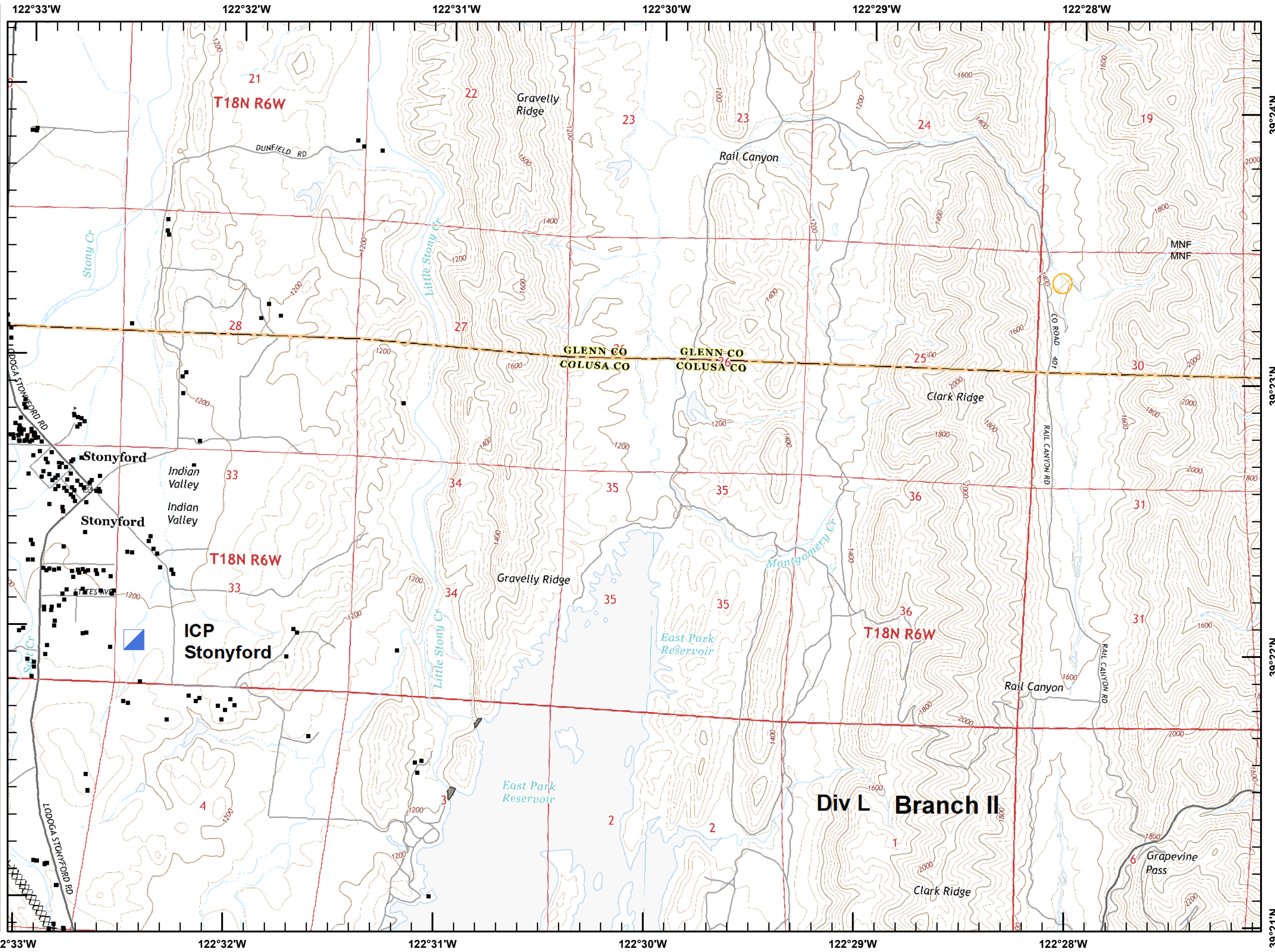
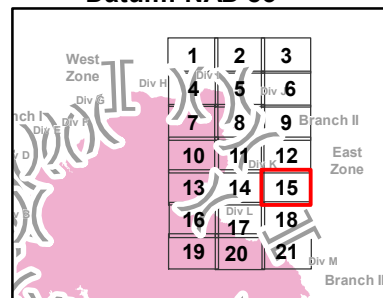
IAP Branch II



■ Structures (USFS)

▨ Equipment Avoidance Areas

Datum: NAD 83



122°33'W

122°32'W

122°31'W

122°30'W

122°29'W

122°28'W

39°24'N

39°23'N

39°22'N

39°21'N

Mendocino Complex

CA-MEU-008674

September 25, 2018

Page 16 of 21

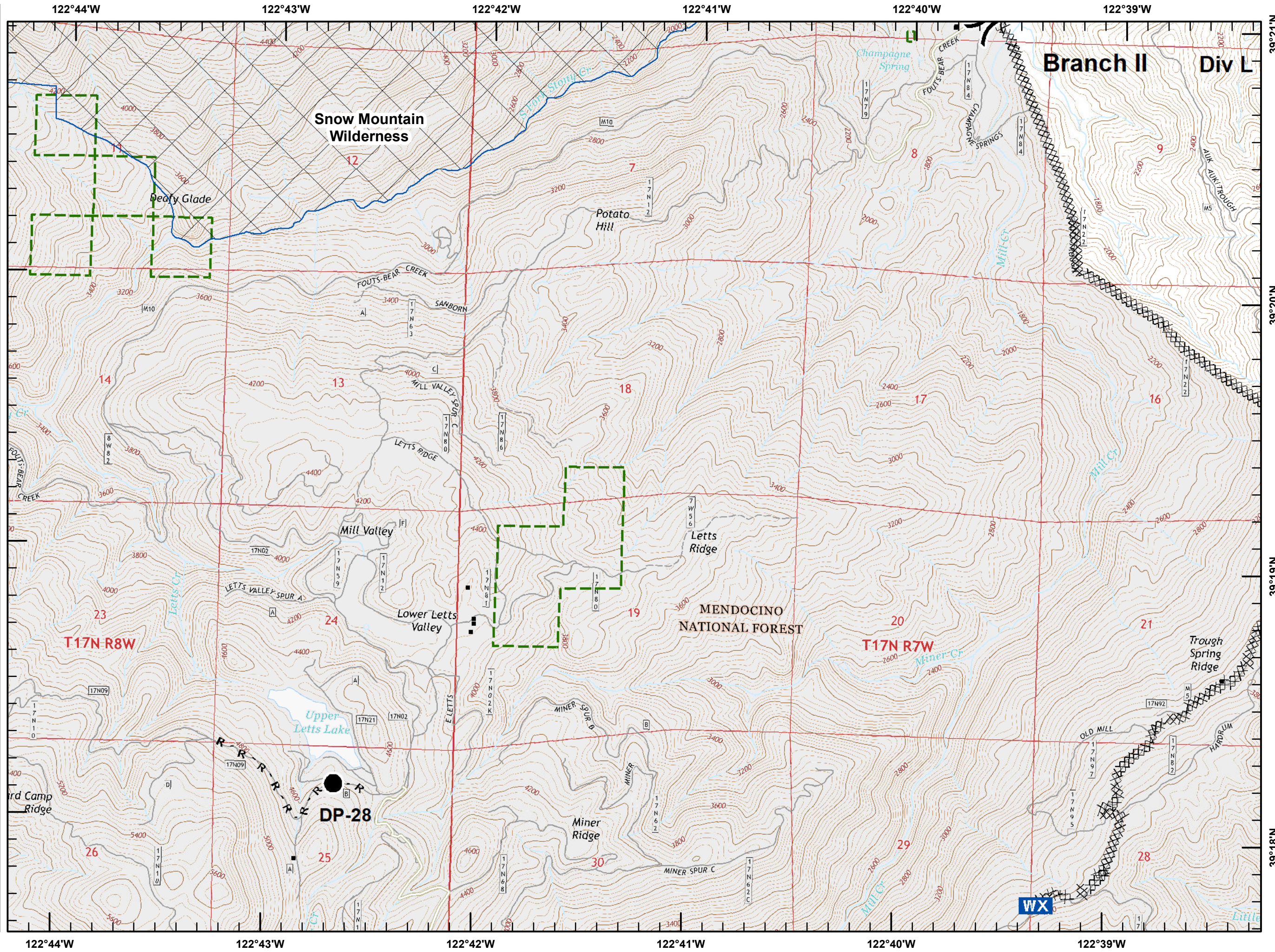
IAP Branch II



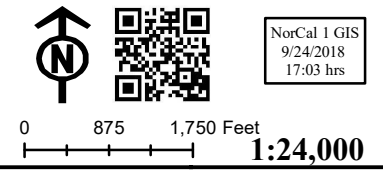
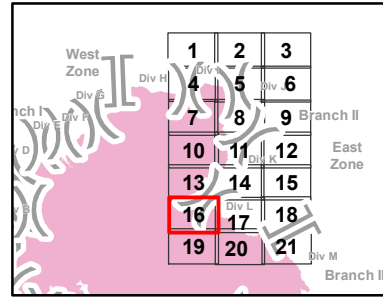
Structures (USFS)

USDA Forest Service

Wilderness Area



Datum: NAD 83



Mendocino Complex

CA-MEU-008674

September 25, 2018

Page 17 of 21

IAP Branch II

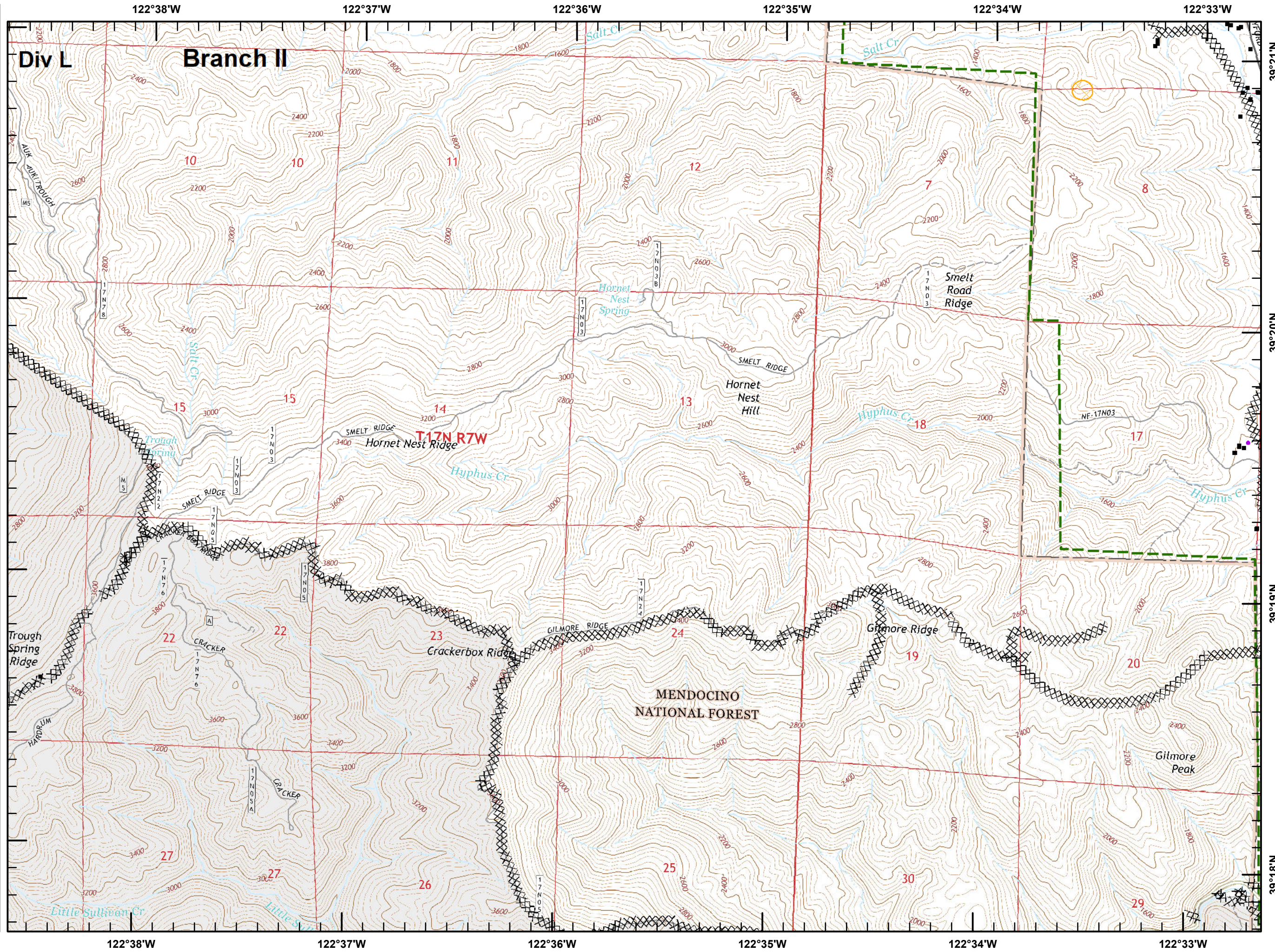
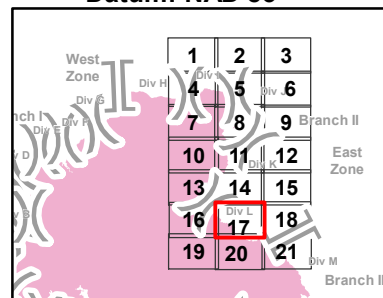


■ Structures (USFS)

▭ USDA Forest Service

⊠ Equipment Avoidance Areas

Datum: NAD 83



Mendocino Complex

CA-MEU-008674

September 25, 2018

Page 18 of 21

IAP Branch II

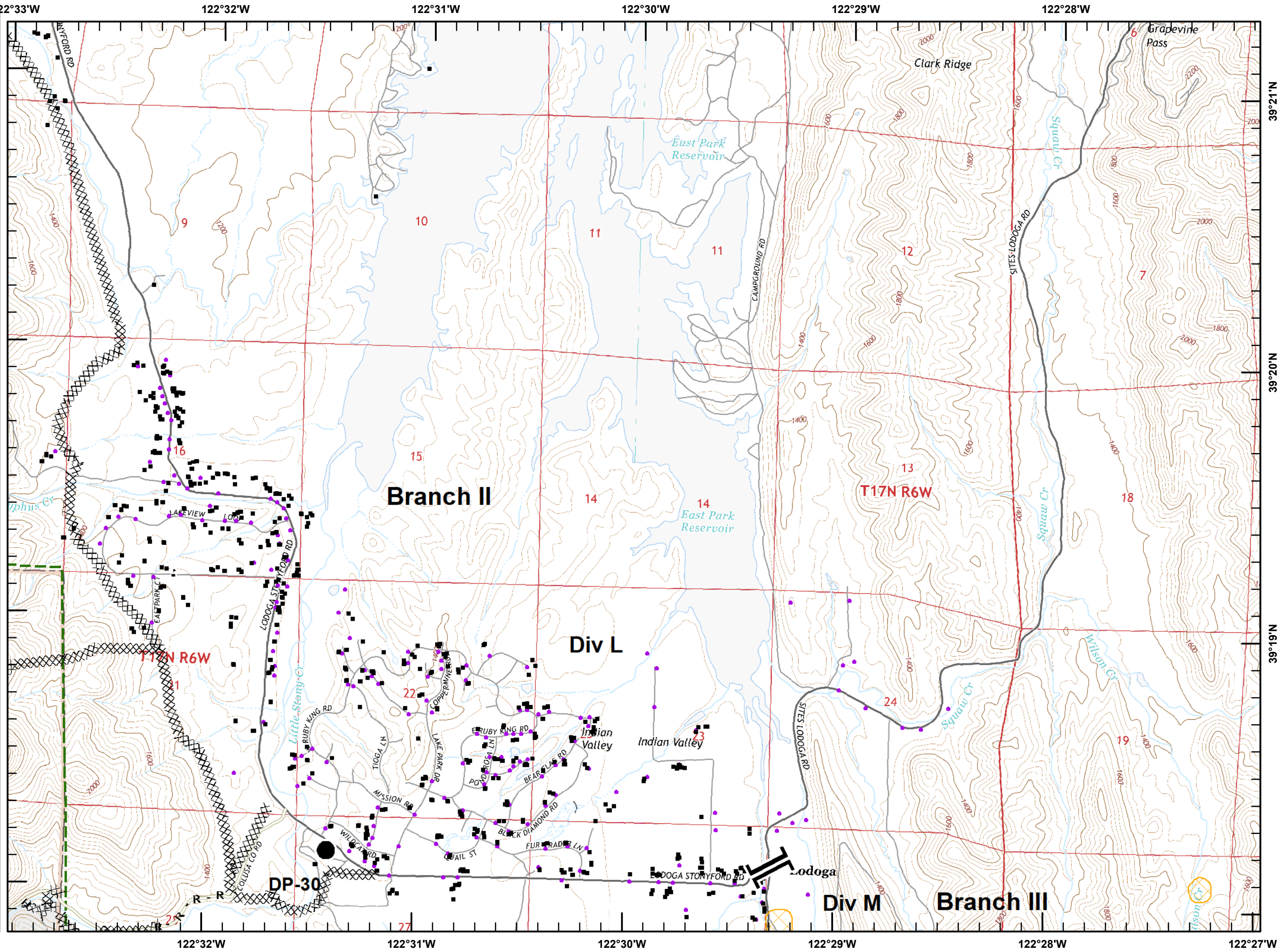
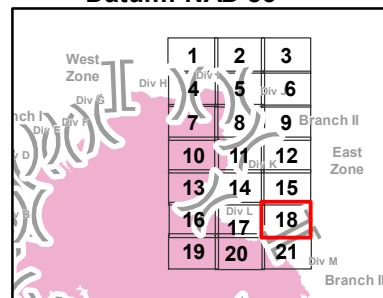


Structures (USFS)

USDA Forest Service

Equipment Avoidance Areas

Datum: NAD 83



Mendocino Complex

CA-MEU-008674

September 25, 2018

Page 19 of 21

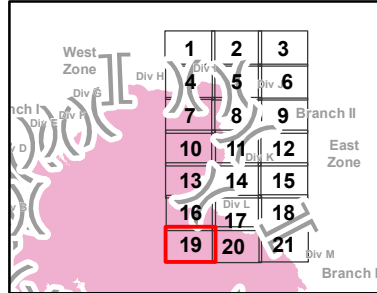
IAP Branch II



■ Structures (USFS)

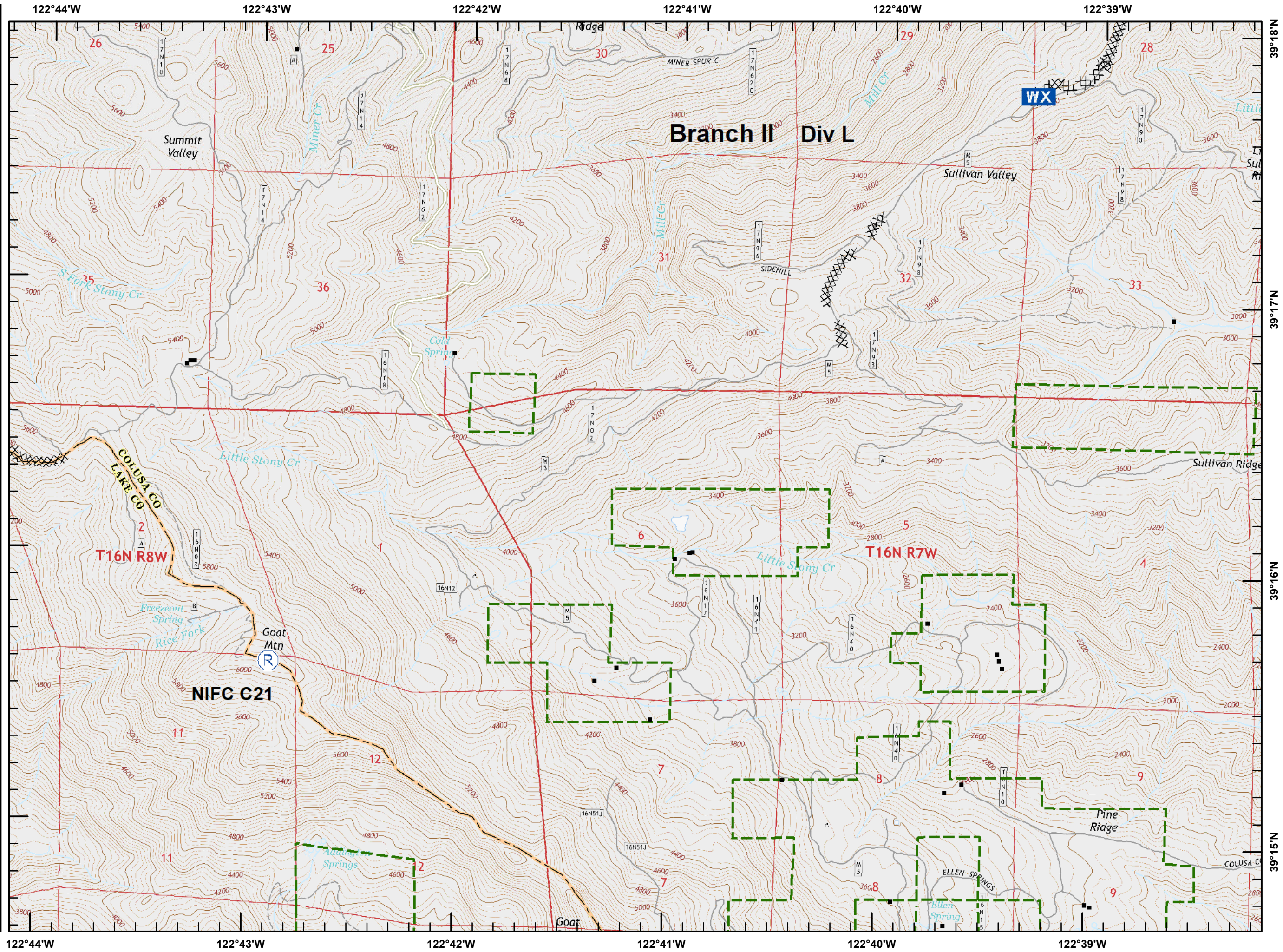
▭ USDA Forest Service

Datum: NAD 83



NorCal 1 GIS
9/24/2018
17:04 hrs

0 875 1,750 Feet
1:24,000



Mendocino Complex

CA-MEU-008674

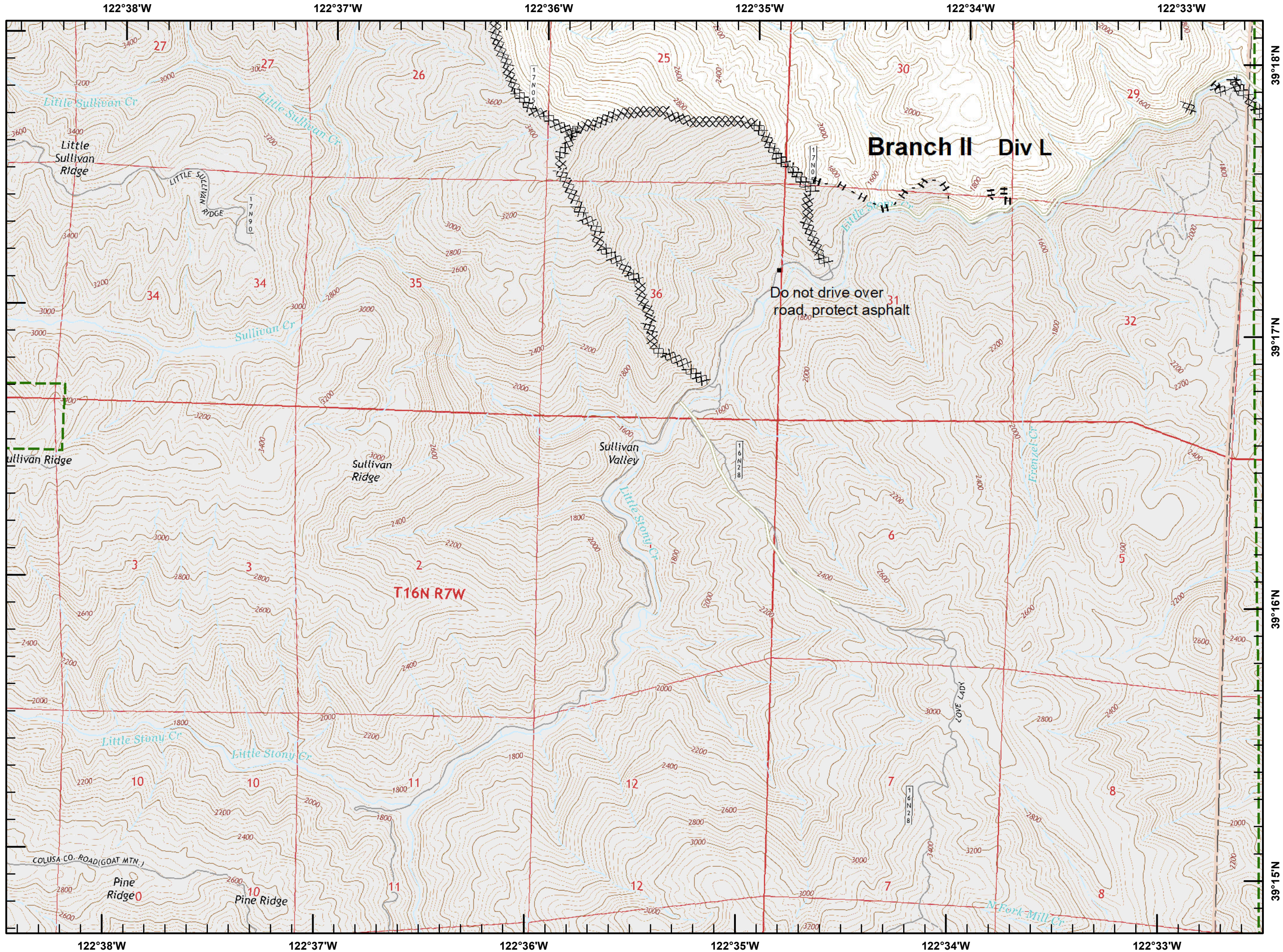
September 25, 2018

Page 20 of 21

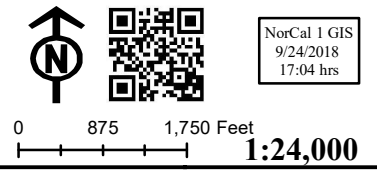
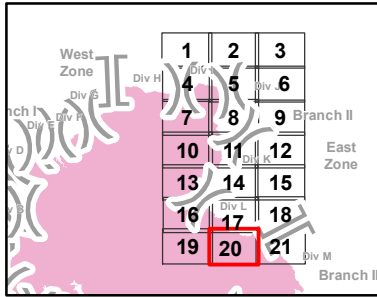
IAP Branch II



USDA Forest Service



Datum: NAD 83



Mendocino Complex

CA-MEU-008674

September 25, 2018

Page 21 of 21

IAP Branch II



■ Structures (USFS)

▭ USDA Forest Service

⊠ Equipment Avoidance Areas

Datum: NAD 83

