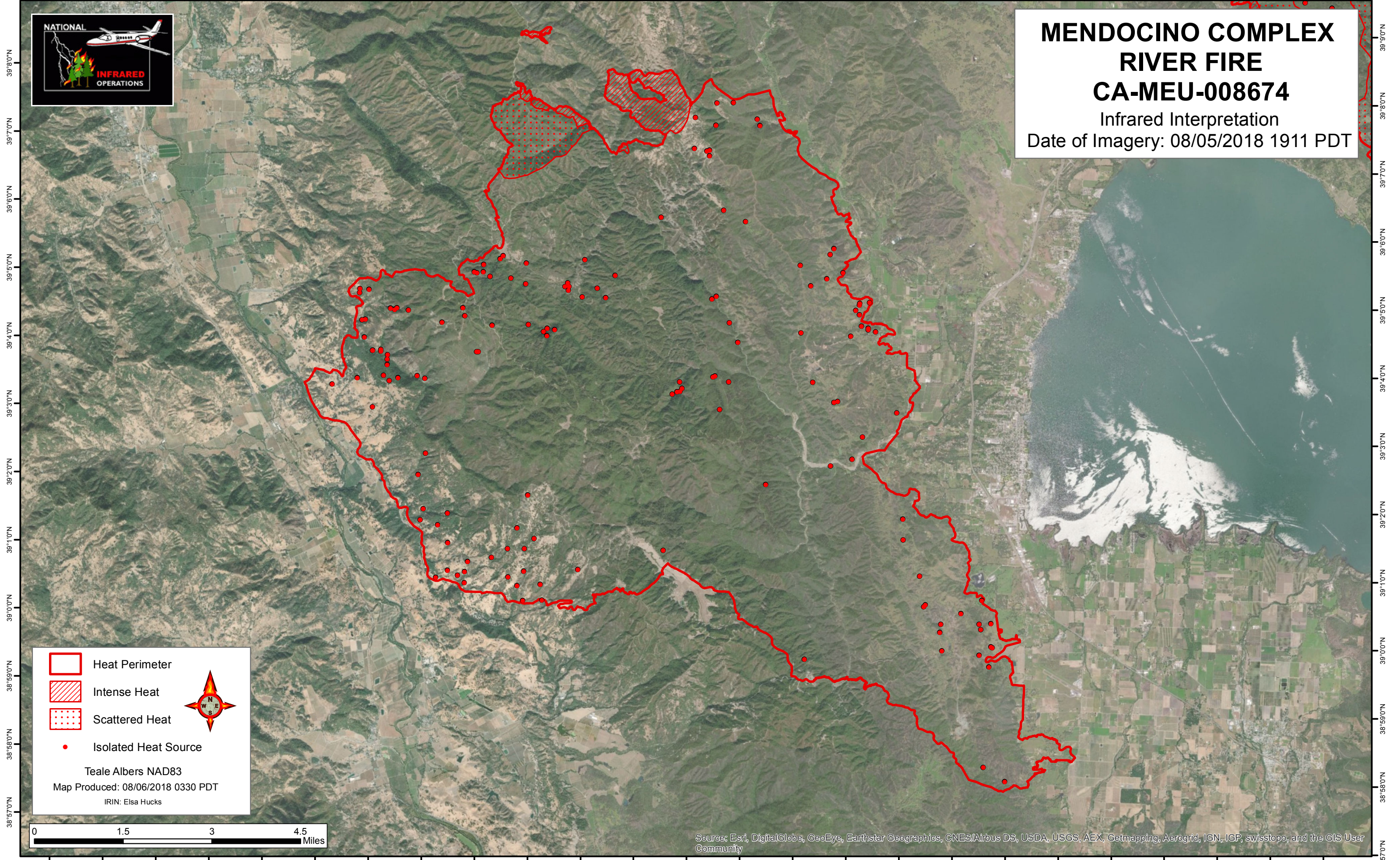






123°14'0"W 123°13'0"W 123°12'0"W 123°11'0"W 123°10'0"W 123°9'0"W 123°8'0"W 123°7'0"W 123°6'0"W 123°5'0"W 123°4'0"W 123°3'0"W 123°2'0"W 123°1'0"W 123°0'0"W 122°59'0"W 122°58'0"W 122°57'0"W 122°56'0"W 122°55'0"W 122°54'0"W 122°53'0"W 122°52'0"W 122°51'0"W 122°50'0"W 122°49'0"W


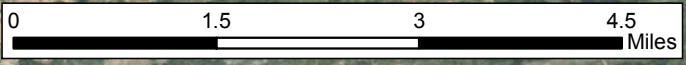


**MENDOCINO COMPLEX
RIVER FIRE
CA-MEU-008674**
Infrared Interpretation
Date of Imagery: 08/05/2018 1911 PDT



-  Heat Perimeter
-  Intense Heat
-  Scattered Heat
-  Isolated Heat Source

Teale Albers NAD83
Map Produced: 08/06/2018 0330 PDT
IRIN: Elsa Hucks

Source: Esri, DigitalGlobe, GeoEye, Earthstar Geographics, CNES/Airbus DS, USDA, USGS, AEX, Getmapping, Aerogrid, IGN, IGP, swisstopo, and the GIS User Community

123°13'0"W 123°12'0"W 123°11'0"W 123°10'0"W 123°9'0"W 123°8'0"W 123°7'0"W 123°6'0"W 123°5'0"W 123°4'0"W 123°3'0"W 123°2'0"W 123°1'0"W 123°0'0"W 122°59'0"W 122°58'0"W 122°57'0"W 122°56'0"W 122°55'0"W 122°54'0"W 122°53'0"W 122°52'0"W 122°51'0"W 122°50'0"W 122°49'0"W