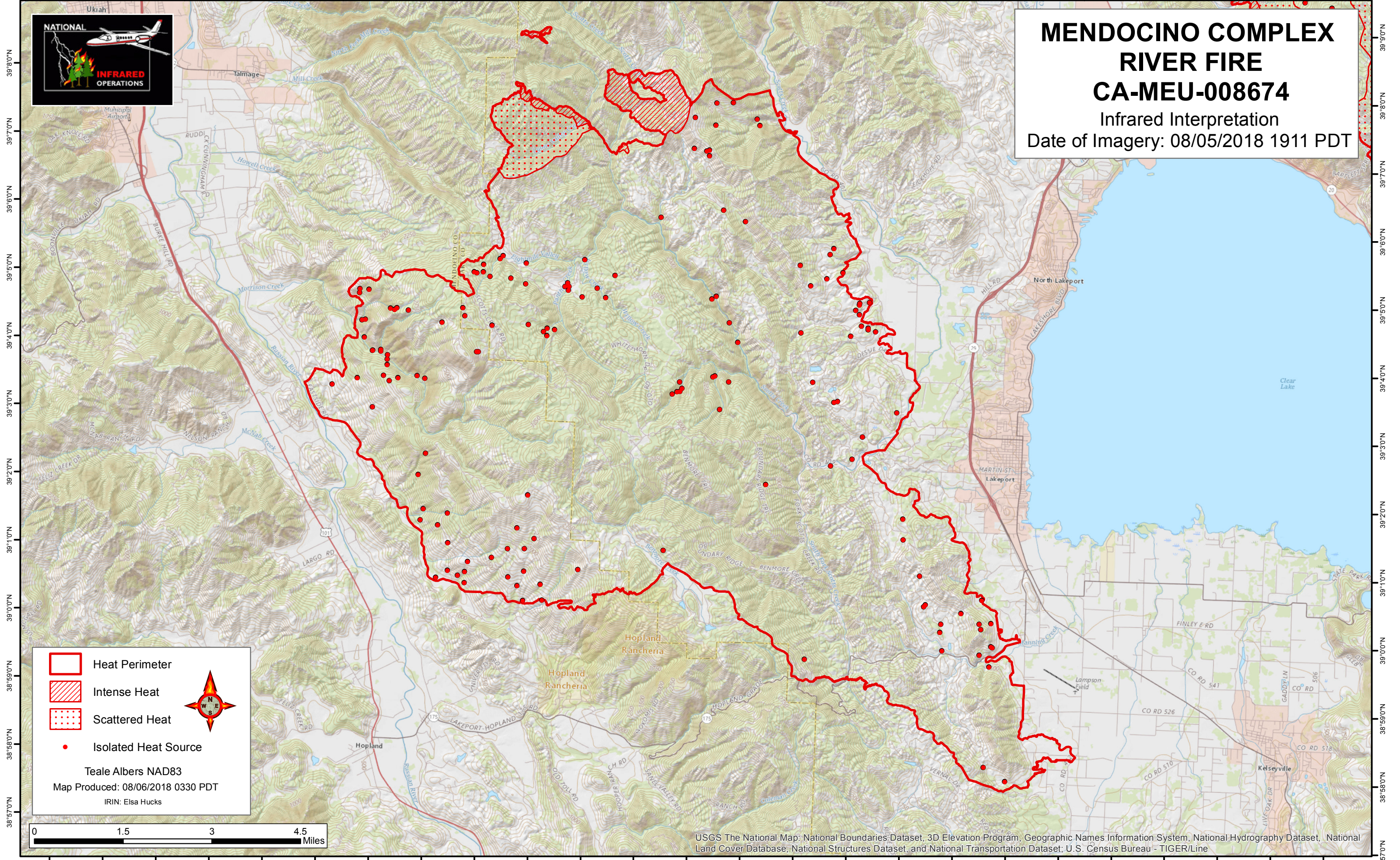






123°14'0"W 123°13'0"W 123°12'0"W 123°11'0"W 123°10'0"W 123°9'0"W 123°8'0"W 123°7'0"W 123°6'0"W 123°5'0"W 123°4'0"W 123°3'0"W 123°2'0"W 123°1'0"W 123°0'0"W 122°59'0"W 122°58'0"W 122°57'0"W 122°56'0"W 122°55'0"W 122°54'0"W 122°53'0"W 122°52'0"W 122°51'0"W 122°50'0"W 122°49'0"W



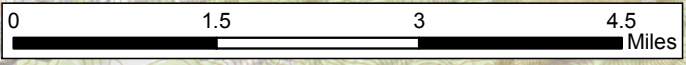
# MENDOCINO COMPLEX RIVER FIRE CA-MEU-008674

Infrared Interpretation  
Date of Imagery: 08/05/2018 1911 PDT



-  Heat Perimeter
-  Intense Heat
-  Scattered Heat
-  Isolated Heat Source

Teale Albers NAD83  
Map Produced: 08/06/2018 0330 PDT  
IRIN: Elsa Hucks



USGS The National Map: National Boundaries Dataset, 3D Elevation Program, Geographic Names Information System, National Hydrography Dataset, National Land Cover Database, National Structures Dataset, and National Transportation Dataset; U.S. Census Bureau - TIGER/Line

123°13'0"W 123°12'0"W 123°11'0"W 123°10'0"W 123°9'0"W 123°8'0"W 123°7'0"W 123°6'0"W 123°5'0"W 123°4'0"W 123°3'0"W 123°2'0"W 123°1'0"W 123°0'0"W 122°59'0"W 122°58'0"W 122°57'0"W 122°56'0"W 122°55'0"W 122°54'0"W 122°53'0"W 122°52'0"W 122°51'0"W 122°50'0"W 122°49'0"W