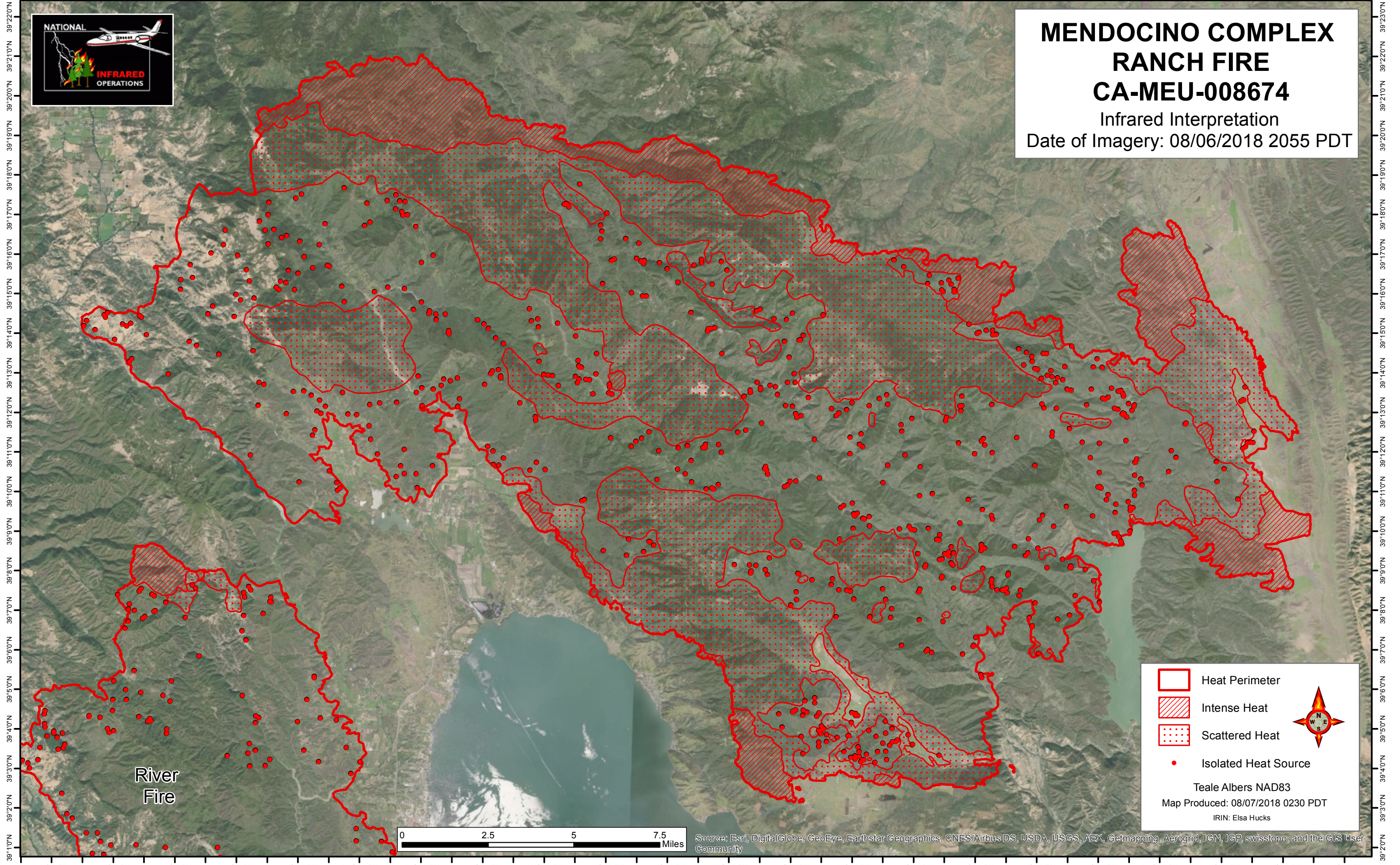


123°7'0"W 123°5'0"W 123°3'0"W 123°1'0"W 122°59'0"W 122°57'0"W 122°55'0"W 122°53'0"W 122°51'0"W 122°49'0"W 122°47'0"W 122°45'0"W 122°43'0"W 122°41'0"W 122°39'0"W 122°37'0"W 122°35'0"W 122°33'0"W 122°31'0"W 122°29'0"W 122°27'0"W 122°25'0"W

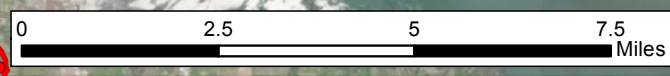






# MENDOCINO COMPLEX RANCH FIRE CA-MEU-008674

Infrared Interpretation  
Date of Imagery: 08/06/2018 2055 PDT




River  
Fire



-  Heat Perimeter
-  Intense Heat
-  Scattered Heat
-  Isolated Heat Source

Teale Albers NAD83  
Map Produced: 08/07/2018 0230 PDT  
IRIN: Elsa Hucks



Source: Esri, DigitalGlobe, GeoEye, Earthstar Geographics, CNES/Airbus DS, USDA, USGS, AEX, Getmapping, Aerogrid, IGN, IGP, swisstopo, and the GIS User Community

123°7'0"W 123°5'0"W 123°3'0"W 123°1'0"W 122°59'0"W 122°57'0"W 122°55'0"W 122°53'0"W 122°51'0"W 122°49'0"W 122°47'0"W 122°45'0"W 122°43'0"W 122°41'0"W 122°39'0"W 122°37'0"W 122°35'0"W 122°33'0"W 122°31'0"W 122°29'0"W 122°27'0"W 122°25'0"W