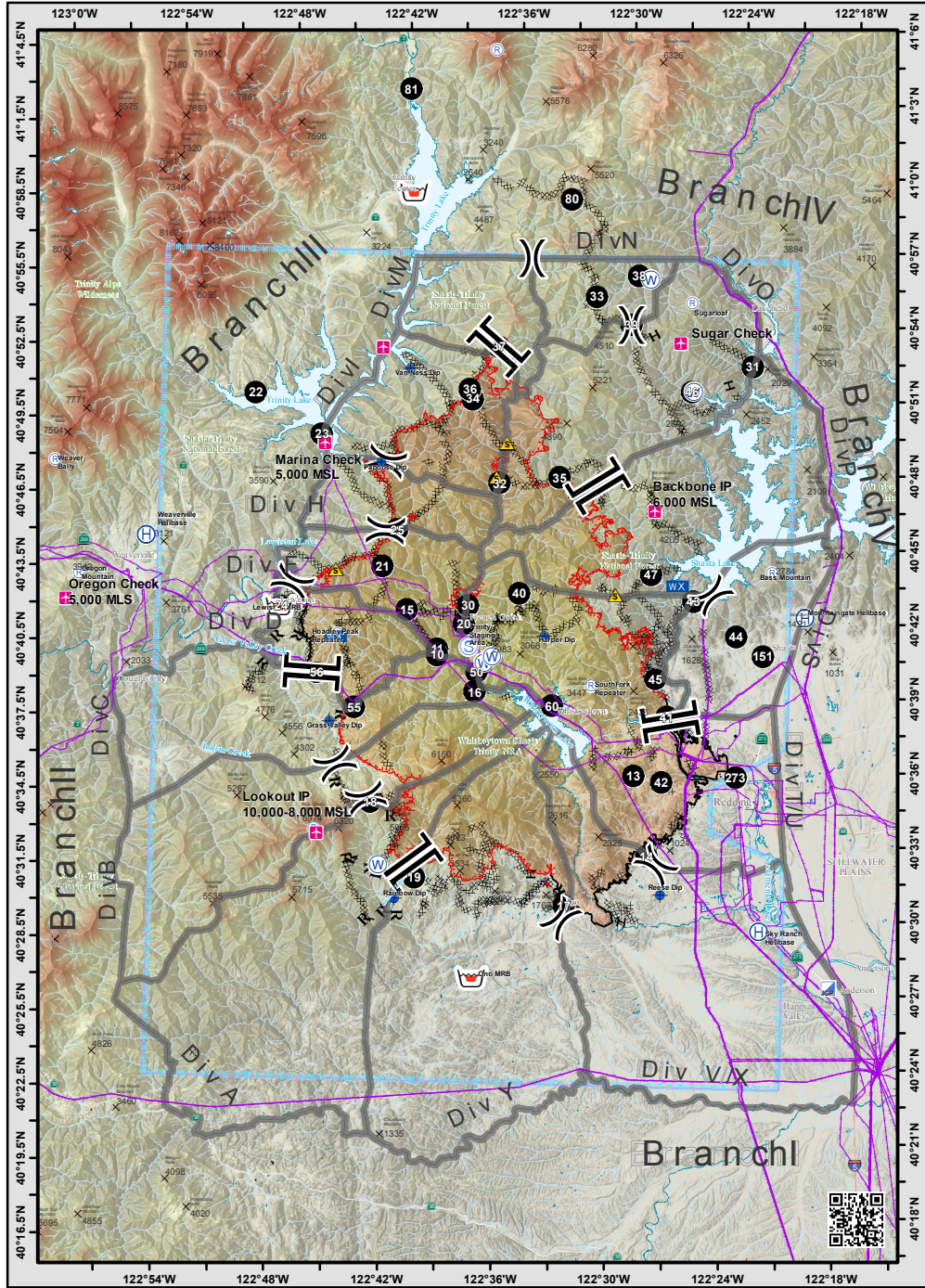


Label	Latitude	Longitude	Latitude	Longitude
DP-10	N40° 40.351'	W122° 39.695'	Oregon Check	N40° 42.170' W122° 59.510'
DP-11	N40° 40.587'	W122° 39.719'	Oregon Mountain	N40° 43.224' W122° 58.829'
DP-13	N40° 35.634'	W122° 29.129'	Papoose Dip	N40° 48.057' W122° 42.948'
DP-14	N40° 32.408'	W122° 28.332'	Porta-Tank	N40° 40.071' W122° 37.244'
DP-15	N40° 42.139'	W122° 41.377'	Porta-Tank	N40° 40.322' W122° 36.811'
DP-16	N40° 38.873'	W122° 37.658'	Rainbow Dip	N40° 30.460' W122° 41.638'
DP-17	N40° 30.337'	W122° 32.618'	Red Bluff Camp (Off Map)	N40° 11.467' W122° 12.171'
DP-18	N40° 34.317'	W122° 43.039'	Reese Dip	N40° 30.870' W122° 27.560'
DP-19	N40° 31.316'	W122° 40.586'	Sky Ranch Helibase	N40° 29.490' W122° 22.270'
DP-20	N40° 41.625'	W122° 38.329'	SouthFork Repeater	N40° 39.242' W122° 31.506'
DP-21	N40° 43.860'	W122° 42.720'	Sugar Check	N40° 53.168' W122° 27.191'
DP-22	N40° 50.739'	W122° 49.731'	Sugarloaf	N40° 54.840' W122° 26.640'
DP-23	N40° 49.133'	W122° 46.150'	Trinity Check	N40° 52.712' W122° 43.032'
DP-24	N40° 42.139'	W122° 48.058'	Trinity MRB	N40° 58.965' W122° 41.623'
DP-25	N40° 45.346'	W122° 41.996'	Trinity Staging Area	N40° 40.699' W122° 38.047'
DP-30	N40° 42.359'	W122° 38.137'	Van Ness Dip	N40° 51.850' W122° 41.550'
DP-31	N40° 52.305'	W122° 23.353'	Washed Out Road	N40° 44.730' W122° 27.686'
DP-32	N40° 47.319'	W122° 36.640'	Weaver Bally	N40° 47.774' W123° 0.302'
DP-33	N40° 54.985'	W122° 31.732'	Weaverville Helibase	N40° 44.835' W122° 55.340'
DP-34	N40° 50.717'	W122° 38.200'	Whitney	N40° 48.148' W122° 36.312'
DP-35	N40° 47.603'	W122° 33.448'	Whitney Staging Area	N40° 47.534' W122° 36.806'

Legend

- Uncontrolled Fire Edge
- Completed Line
- Completed Dozer Line
- Completed Hand Line
- Road as Completed Line
- Aerial Hazard
- Management Action Point
- TFR-8/1917
- Wildfire Daily Fire Perimeter
- Northern California Summits
- Aerial Hazard
- Retardant/Mud Pit
- Mobile Weather Unit
- Airstrip or Airport
- Camp
- Dip Site
- Fire Origin
- Helibase
- Repeater
- Safety Zone
- Staging Area
- Water Source
- Division Break
- Branch Break

DP-36	N40° 51.111'	W122° 38.366'
DP-37	N40° 52.861'	W122° 36.861'
DP-38	N40° 55.867'	W122° 29.503'
DP-39	N40° 53.877'	W122° 29.841'
DP-40	N40° 42.902'	W122° 35.455'
DP-41	N40° 38.049'	W122° 27.443'
DP-42	N40° 35.394'	W122° 27.649'
DP-43	N40° 42.761'	W122° 26.201'
DP-44	N40° 41.385'	W122° 23.882'
DP-45	N40° 39.573'	W122° 28.102'
DP-46	N40° 51.238'	W122° 26.523'
DP-47	N40° 43.800'	W122° 28.460'
DP-50	N40° 39.657'	W122° 37.588'
DP-55	N40° 38.107'	W122° 44.027'
DP-56	N40° 39.480'	W122° 46.080'
DP-60	N40° 38.383'	W122° 33.556'
DP-80	N40° 58.894'	W122° 33.194'
DP-81	N41° 3.178'	W122° 41.924'
DP-151	N40° 40.622'	W122° 22.411'
DP-273	N40° 35.670'	W122° 23.698'
Backbone IP	N40° 46.370'	W122° 28.360'
Bass Mountain	N40° 43.982'	W122° 22.020'
Bonanza King Lookout	N41° 4.858'	W122° 37.400'
Grass Valley Dip	N40° 37.540'	W122° 45.330'
Harper Dip	N40° 41.190'	W122° 34.030'
Hoadley Peak Repeater	N40° 41.075'	W122° 45.029'
Hydration	N40° 37.925'	W122° 27.480'
Hydration	N40° 35.387'	W122° 27.596'
Hydration	N40° 42.481'	W122° 38.167'
Inskip Mtn. (Off Map)	N40° 20.480'	W121° 56.615'
Lewiston MRB	N40° 42.072'	W122° 48.156'
Lookout IP	N40° 32.990'	W122° 45.860'
Marina Check	N40° 48.790'	W122° 46.000'
Middle Barn	N40° 48.952'	W122° 36.293'
Mountaingate	N40° 42.209'	W122° 20.229'
Ono MRB	N40° 27.300'	W122° 37.420'



NAD83 1:525,000



Air Ops
Carr Incident
CA-SHU-007808
August 7, 2018

8/6/2018 @ 12:50