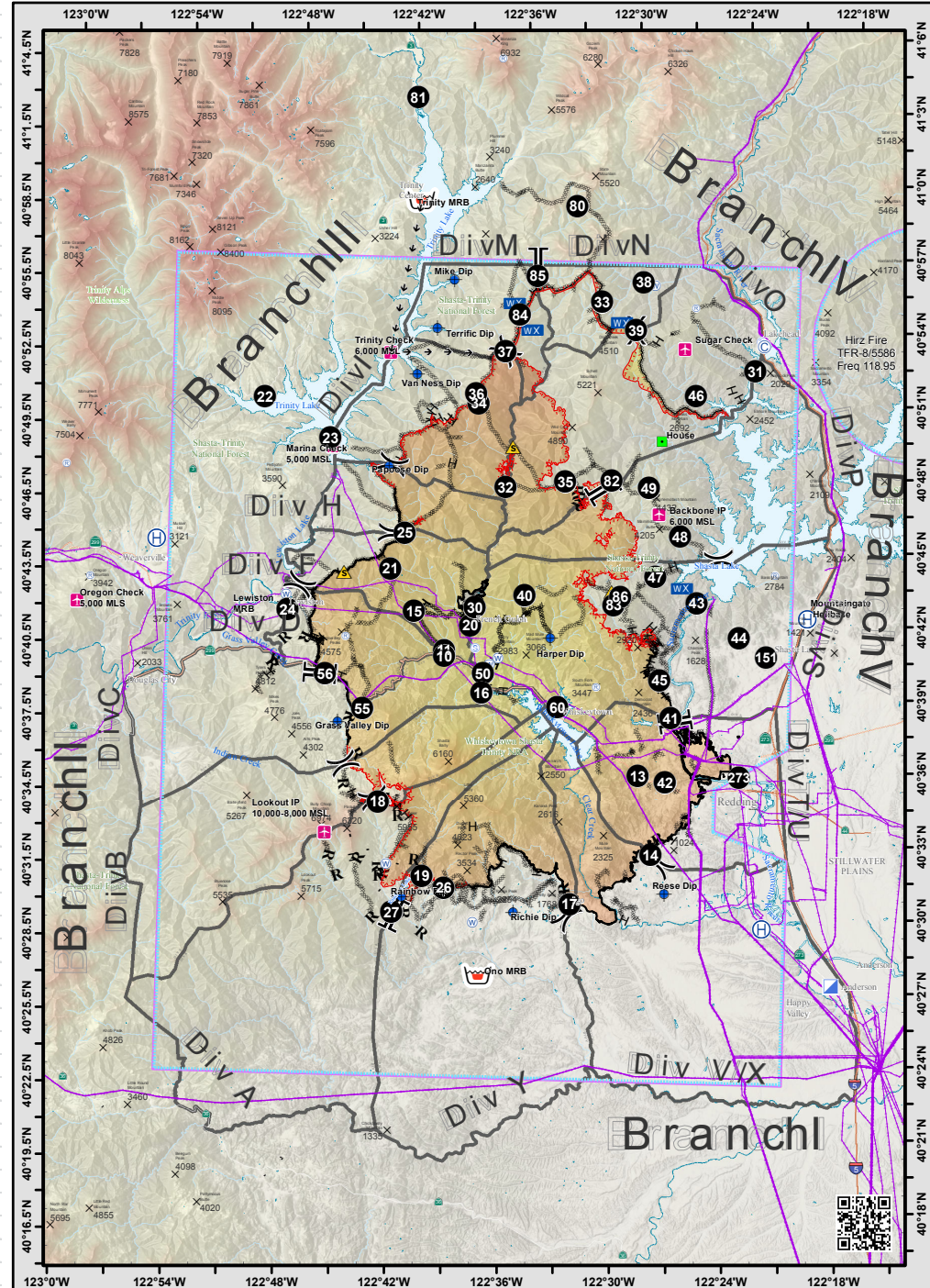


| Label | Latitude | Longitude |
|-----------------------|--------------|---------------|
| Backbone IP | N40° 46.370' | W122° 28.360' |
| Bass Mountain | N40° 43.982' | W122° 22.020' |
| Bonanza King Lookout | N41° 4.858' | W122° 37.400' |
| Bully Choop | N40° 33.180' | W122° 45.978' |
| DP-10 | N40° 40.351' | W122° 39.695' |
| DP-11 | N40° 40.587' | W122° 39.719' |
| DP-13 | N40° 35.634' | W122° 29.129' |
| DP-14 | N40° 32.408' | W122° 28.332' |
| DP-15 | N40° 42.139' | W122° 41.377' |
| DP-151 | N40° 40.622' | W122° 22.411' |
| DP-16 | N40° 38.873' | W122° 37.658' |
| DP-17 | N40° 30.337' | W122° 32.618' |
| DP-18 | N40° 34.317' | W122° 43.039' |
| DP-19 | N40° 31.316' | W122° 40.586' |
| DP-20 | N40° 41.625' | W122° 38.329' |
| DP-21 | N40° 43.860' | W122° 42.720' |
| DP-22 | N40° 50.739' | W122° 49.731' |
| DP-23 | N40° 49.133' | W122° 46.150' |
| DP-24 | N40° 42.086' | W122° 48.181' |
| DP-24 | N40° 42.085' | W122° 48.179' |
| DP-25 | N40° 45.346' | W122° 41.996' |
| DP-26 | N40° 30.853' | W122° 39.366' |
| DP-27 | N40° 29.805' | W122° 42.157' |
| DP-273 | N40° 35.670' | W122° 23.698' |
| DP-30 | N40° 42.359' | W122° 38.137' |
| DP-31 | N40° 52.305' | W122° 23.353' |
| DP-32 | N40° 47.319' | W122° 36.640' |
| DP-33 | N40° 54.985' | W122° 31.732' |
| DP-34 | N40° 50.717' | W122° 38.200' |
| DP-35 | N40° 47.603' | W122° 33.448' |
| DP-36 | N40° 51.111' | W122° 38.366' |
| DP-37 | N40° 52.861' | W122° 36.861' |
| DP-38 | N40° 55.867' | W122° 29.503' |
| DP-39 | N40° 53.877' | W122° 29.841' |
| DP-40 | N40° 42.902' | W122° 35.455' |
| DP-41 | N40° 38.049' | W122° 27.443' |
| DP-42 | N40° 35.394' | W122° 27.649' |
| DP-43 | N40° 42.761' | W122° 26.201' |
| DP-44 | N40° 41.385' | W122° 23.882' |
| DP-45 | N40° 39.573' | W122° 28.102' |
| DP-46 | N40° 51.238' | W122° 26.523' |
| DP-47 | N40° 43.800' | W122° 28.460' |
| DP-48 | N40° 45.491' | W122° 27.178' |
| DP-49 | N40° 47.421' | W122° 28.923' |
| DP-50 | N40° 39.657' | W122° 37.588' |
| DP-55 | N40° 38.107' | W122° 44.027' |
| DP-56 | N40° 39.480' | W122° 42.080' |
| DP-60 | N40° 38.383' | W122° 33.556' |
| DP-80 | N40° 58.894' | W122° 33.194' |
| DP-81 | N41° 3.178' | W122° 41.924' |
| DP-82 | N40° 47.683' | W122° 30.952' |
| DP-83 | N40° 42.617' | W122° 30.670' |
| DP-84 | N40° 54.380' | W122° 36.125' |
| DP-85 | N40° 55.993' | W122° 35.234' |
| DP-86 | N40° 42.944' | W122° 30.311' |
| Grass Valley Dip | N40° 37.540' | W122° 45.330' |
| Harper Dip | N40° 41.190' | W122° 34.030' |
| Hoadley Peak Repeater | N40° 41.075' | W122° 45.029' |
| House | N40° 49.353' | W122° 28.298' |

| Label | Latitude | Longitude |
|--------------------------|--------------|---------------|
| Inskip Mtn. (Off Map) | N40° 20.480' | W121° 56.615' |
| Lakehead Camp | N40° 53.346' | W122° 22.895' |
| Lakehead Dozer Staging | N40° 53.535' | W122° 23.065' |
| Lookout IP | N40° 32.990' | W122° 45.860' |
| Marina Check | N40° 48.790' | W122° 46.000' |
| Middle Barn | N40° 48.952' | W122° 36.293' |
| Mountaingate | N40° 42.209' | W122° 20.229' |
| Ono MRB | N40° 27.300' | W122° 37.420' |
| Oregon Check | N40° 42.170' | W122° 59.510' |
| Oregon Mountain | N40° 43.224' | W122° 58.829' |
| Papoose Dip | N40° 48.057' | W122° 42.948' |
| Porta-Tank | N40° 40.071' | W122° 37.244' |
| Porta-Tank | N40° 40.322' | W122° 36.811' |
| Rainbow Dip | N40° 30.460' | W122° 41.638' |
| Red Bluff Camp (Off Map) | N40° 11.467' | W122° 12.171' |
| Reese Dip | N40° 30.870' | W122° 27.560' |
| Richie Dip | N40° 29.968' | W122° 35.625' |
| Sky Ranch Helibase | N40° 29.490' | W122° 22.270' |
| SouthFork Repeater | N40° 39.242' | W122° 31.506' |
| Sugar Check | N40° 53.168' | W122° 27.191' |
| Sugarloaf | N40° 54.840' | W122° 26.640' |
| Terrific Dip | N40° 53.760' | W122° 40.550' |
| Trinity Check | N40° 52.712' | W122° 43.032' |
| Trinity MRB | N40° 58.965' | W122° 41.623' |
| Trinity Staging Area | N40° 40.699' | W122° 38.047' |
| Van Ness Dip | N40° 51.850' | W122° 41.550' |
| Weaver Bally | N40° 47.774' | W123° 0.302' |
| Weaverville Helibase | N40° 44.835' | W122° 55.340' |
| Whitney Staging Area | N40° 47.534' | W122° 36.806' |

Legend

- Uncontrolled Fire Edge
- Active Burnout
- Completed Line
- Completed Dozer Line
- Completed Hand Line
- Road as Completed Line
- Aerial Hazard
- TFR-8/1917
- Wildfire Daily Fire Perimeter
- Northern California Summits
- Aerial Hazard
- Landmark
- Retardant/Mud Pit
- Mobile Weather Unit
- Airstrip or Airport
- Camp
- Dip Site
- Fire Origin
- Helibase
- Repeater
- Safety Zone
- Staging Area
- Water Source
- Division Break
- Branch Break



NAD83 1:525,000

Air Ops
Carr Incident
CA-SHU-007808
August 10, 2018