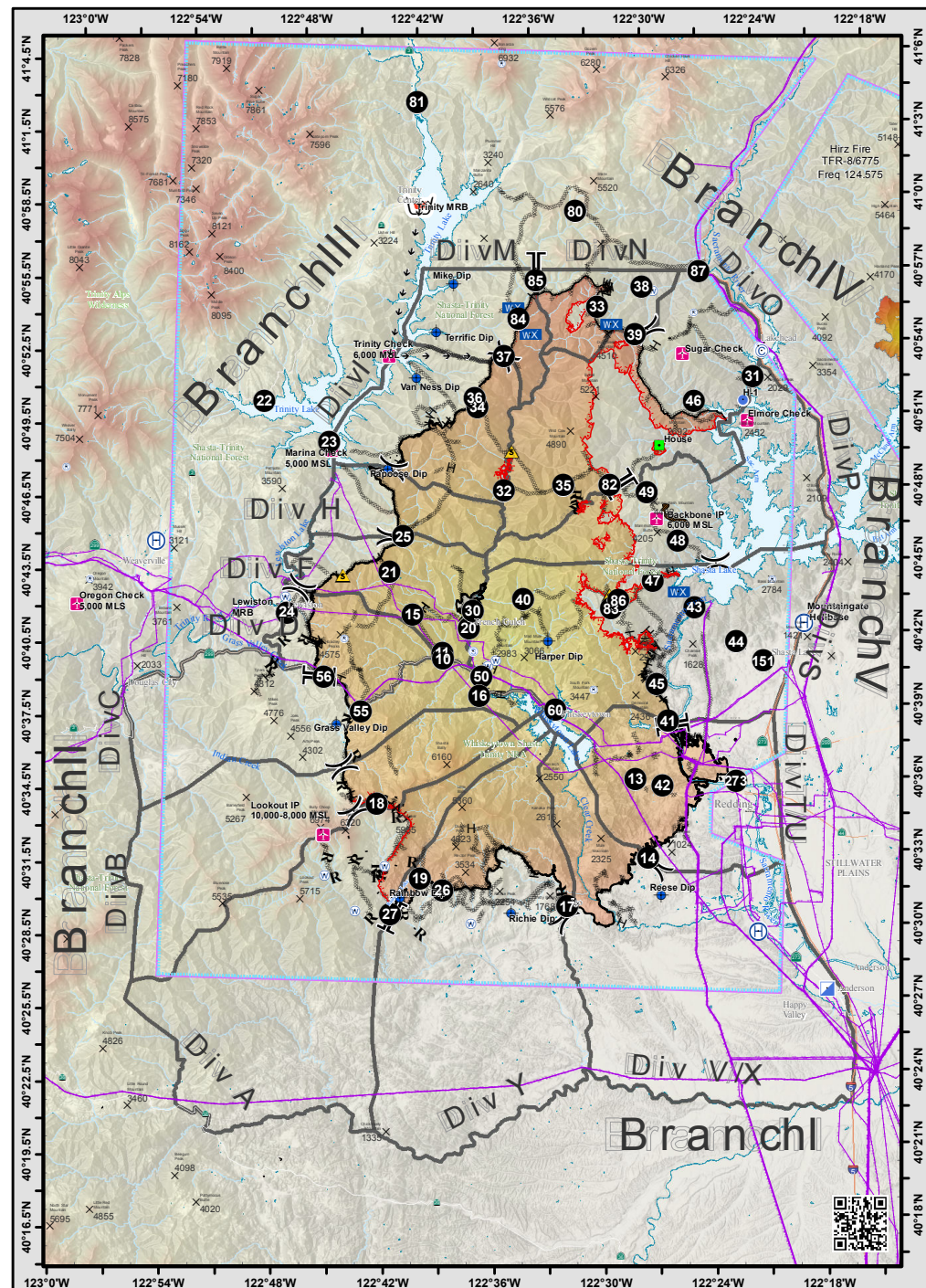


Label	Latitude	Longitude
DP-10	N40° 40.351'	W122° 39.695'
DP-11	N40° 40.587'	W122° 39.719'
DP-13	N40° 35.634'	W122° 29.129'
DP-14	N40° 32.408'	W122° 28.332'
DP-15	N40° 42.139'	W122° 41.377'
DP-16	N40° 38.873'	W122° 37.658'
DP-17	N40° 30.337'	W122° 32.618'
DP-18	N40° 34.317'	W122° 43.039'
DP-19	N40° 31.316'	W122° 40.586'
DP-20	N40° 41.625'	W122° 38.329'
DP-21	N40° 43.860'	W122° 42.720'
DP-22	N40° 50.739'	W122° 49.731'
DP-23	N40° 49.133'	W122° 46.150'
DP-24	N40° 42.086'	W122° 48.181'
DP-24	N40° 42.085'	W122° 48.179'
DP-25	N40° 45.346'	W122° 41.996'
DP-26	N40° 30.853'	W122° 39.366'
DP-27	N40° 29.805'	W122° 42.157'
DP-30	N40° 42.359'	W122° 38.137'
DP-31	N40° 52.305'	W122° 23.353'
DP-32	N40° 47.319'	W122° 36.640'
DP-33	N40° 54.990'	W122° 31.859'
DP-34	N40° 50.717'	W122° 38.200'
DP-35	N40° 47.603'	W122° 33.448'
DP-36	N40° 51.111'	W122° 38.366'
DP-37	N40° 52.861'	W122° 36.861'
DP-38	N40° 55.867'	W122° 29.503'
DP-39	N40° 53.900'	W122° 29.781'
DP-40	N40° 42.902'	W122° 35.455'
DP-41	N40° 38.049'	W122° 27.443'
DP-42	N40° 35.394'	W122° 27.649'
DP-43	N40° 42.761'	W122° 26.201'
DP-44	N40° 41.385'	W122° 23.882'
DP-45	N40° 39.573'	W122° 28.102'
DP-46	N40° 51.238'	W122° 26.523'
DP-47	N40° 43.800'	W122° 28.460'
DP-48	N40° 45.491'	W122° 27.178'
DP-49	N40° 47.421'	W122° 28.923'
DP-50	N40° 39.657'	W122° 37.588'
DP-55	N40° 38.107'	W122° 44.027'
DP-56	N40° 39.480'	W122° 46.080'
DP-60	N40° 38.383'	W122° 33.556'
DP-80	N40° 58.894'	W122° 33.194'
DP-81	N41° 3.178'	W122° 41.924'
DP-82	N40° 47.683'	W122° 30.952'
DP-83	N40° 42.617'	W122° 30.670'
DP-84	N40° 54.380'	W122° 36.125'
DP-85	N40° 55.993'	W122° 35.234'
DP-86	N40° 42.944'	W122° 30.311'
DP-87	N40° 56.572'	W122° 26.431'
DP-151	N40° 40.622'	W122° 22.411'
DP-273	N40° 35.670'	W122° 23.698'
Backbone IP	N40° 46.370'	W122° 28.360'
Bass Mountain	N40° 43.982'	W122° 22.020'
Bonanza King Lookout	N41° 4.858'	W122° 37.400'
Bully Choop	N40° 33.180'	W122° 45.978'
Elmore Check	N40° 50.483'	W122° 23.592'
Grass Valley Dip	N40° 37.540'	W122° 45.330'

Label	Latitude	Longitude
H-1	N40° 51.316'	W122° 23.823'
Harper Dip	N40° 41.190'	W122° 34.030'
Hoadley Peak Repeater	N40° 41.075'	W122° 45.029'
House	N40° 49.353'	W122° 28.298'
Inskip Mtn.	N40° 20.480'	W121° 56.615'
Lakehead Camp	N40° 53.346'	W122° 22.895'
Lakehead Dozer Staging	N40° 53.535'	W122° 23.065'
Lookout IP	N40° 32.990'	W122° 45.860'
Marina Check	N40° 48.790'	W122° 46.000'
Middle Barn	N40° 48.952'	W122° 36.293'
Mike Dip	N40° 55.753'	W122° 39.688'
Mountaingate	N40° 42.209'	W122° 20.229'
Oregon Check	N40° 42.170'	W122° 59.510'
Oregon Mountain	N40° 43.224'	W122° 58.829'
Papoose Dip	N40° 48.057'	W122° 42.948'
Rainbow Dip	N40° 30.460'	W122° 41.638'
Red Bluff Camp	N40° 11.467'	W122° 12.171'
Reese Dip	N40° 30.870'	W122° 27.560'
Richie Dip	N40° 29.968'	W122° 35.625'
Sky Ranch Helibase	N40° 29.490'	W122° 22.270'
SouthFork Repeater	N40° 39.242'	W122° 31.506'
Sugar Check	N40° 53.168'	W122° 27.191'
Sugarloaf	N40° 54.840'	W122° 26.640'
Terrific Dip	N40° 53.760'	W122° 40.550'
Trinity Check	N40° 52.712'	W122° 43.032'
Trinity MRB	N40° 58.965'	W122° 41.623'
Trinity Staging Area	N40° 40.699'	W122° 38.047'
Van Ness Dip	N40° 51.850'	W122° 41.550'
Weaver Bally	N40° 47.774'	W123° 0.302'
Weaverville Helibase	N40° 44.835'	W122° 55.340'
Whitney Staging Area	N40° 47.534'	W122° 36.806'

### Legend

- Uncontrolled Fire Edge
- Active Burnout
- Completed Line
- Completed Dozer Line
- Completed Hand Line
- Road as Completed Line
- Aerial Hazard
- TFR-8/6755
- Wildfire Daily Fire Perimeter
- Landmark
- Retardant/Mud Pit
- Mobile Weather Unit
- Airstrip or Airport
- Camp
- Dip Site
- Fire Origin
- Helibase
- Repeater
- Safety Zone
- Staging Area
- Water Source
- Northern California Summits
- Aerial Hazard
- Helispot
- Division Break
- Branch Break



NAD83 1:525,000

**Air Ops**  
Carr Incident  
CA-SHU-007808  
August 13, 2018