

# Carr

# INCIDENT

#CA-SHU-007808

## INCIDENT ACTION PLAN



### OPERATIONAL PERIOD

8/2/2018

to

8/3/2018

1000

1000

1000

1000

1000

1000

1000

1000

1000

# INCIDENT OBJECTIVES (ICS 202)

<b>1. Incident Name:</b>  <p style="text-align: center;">Carr</p>	<b>2. Operational Period:</b>	Date From: 8/2/2018    Date To: 8/3/2018 Time From: 0700        Time To: 0700
---	-------------------------------	--

**3. Objective(s):**

Management Objectives

- Provide for public and emergency personnel safety at all times
- Provide for timely and accurate release of incident information to the public, media, first responders, agency administrators and cooperators
- Protect and defend property, improvements, infrastructure; economic, natural, cultural, and heritage resources in the fire area
- Identify, process, and coordinate the safe repopulation and re-entry of affected communities in an efficient and timely manner
- Foster and maintain relationships; ensure coordination and communication with all stakeholders, adjoining jurisdictions and cooperating agencies
- Manage the incident in a cost-efficient manner

Control Objectives

- Keep the fire North of Cottonwood Creek to Highway 36
- Keep the fire South of Dog Creek Rd
- Keep the fire East of Deer Lick Springs Rd to Highway 3 to Highway 299 to Trinity Dam Blvd
- Keep the fire West of Interstate 5

**General Situational Awareness:**

- ENSURE AND MAINTAIN EFFECTIVE COMMUNICATIONS WITH CARR COMMUNICATION AT ALL TIMES INCLUDING USING PROPER NAMING CONVENTION.**
- Steep and rugged terrain, critically dry and receptive fuel beds.
- Critical fire weather conditions continue again for today due to hot, dry unstable weather conditions including locally gusty winds.
- Hydration/ Nutrition/ Fatigue: drink water, eat, and rest when necessary and appropriate.
- Re-energized power transmission lines: Be aware that lines may be live.

**5. Site Safety Plan Required?**                      Yes  No

**Approved Site Safety Plan(s) Located at:**

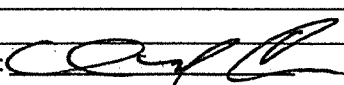
**6. Incident Action Plan**

<input checked="" type="checkbox"/> ICS 203	<input checked="" type="checkbox"/> ICS 215A	<input type="checkbox"/> Phone List	<input type="checkbox"/> Fire Suppression Repair Plan
<input checked="" type="checkbox"/> ICS 204	<input checked="" type="checkbox"/> ICS 220	<input checked="" type="checkbox"/> Training Message	<input checked="" type="checkbox"/> POI Message
<input checked="" type="checkbox"/> ICS 205	<input checked="" type="checkbox"/> Incident Map	<input checked="" type="checkbox"/> Travel Map	<input checked="" type="checkbox"/> OES Message
<input checked="" type="checkbox"/> ICS 206	<input checked="" type="checkbox"/> Weather Forecast	<input checked="" type="checkbox"/> Demob Plan	<input checked="" type="checkbox"/> NIFC FTP access path to maps
<input checked="" type="checkbox"/> ICS 208	<input checked="" type="checkbox"/> Fire Behavior	<input checked="" type="checkbox"/> Finance Message	<input checked="" type="checkbox"/> ICS 214

<b>7. Prepared By:</b> Mike Petro	Position/Title: PSC	Signature:	
<b>8. Approved by Incident Commander:</b>	Mike Van Loben Sels	Signature:	

ICS 202

## ORGANIZATION ASSIGNMENT LIST (ICS 203)

<b>1. Incident Name:</b> Carr		<b>2. Operational Period: Date From:</b> 8/2/2018 <b>Date To:</b> 8/3/2018 <b>Time From:</b> 0700 <b>Time To:</b> 0700	
<b>3. Incident Commander(s) and Command Staff:</b>		<b>7. Operation Section:</b>	
IC/UC's	B.Gouvea/ T.Pechota/ C.Kreider/G. Bertelli (T)	Chief	T. Brownell/ A. McBath (T) (Day)
Deputy	M. Van Loben Sels/ S.Spinharney (T)	Deputy	S. Crawford/ M. Wink (T)
Safety Officer	B. Carter/ A. Stornetta (T)	Night Ops	F. Berbena
Information Officer	R. Brocchini/ C. Bulivac/ B. Mercado (T)	Staging Area	Anderson
	J. Clingingsmith (T)	Branch	I
Liaison Officer	D.Schloss/ T.Crawford/ S.McCabe	Division/Group	T/U
	M. Hardey/ B.Smith (T)/ R. Ingels (T)	Division/Group	V/X
<b>4. Agency/Organization Representatives:</b>		Division/Group	
Trinity County SO	M.Mandolfo	Division/Group	
Sierra Pacific Industries	N.Kroncki	Division/Group	
Shasta County SO	A.Bertain	Branch	II
County Roads Dept.	(530) 225-5661	Division/Group	Y
Cal OES AREP	P.Titus	Division/Group	A
PG&E	M.Weaver	Division/Group	B
CDCR	M.Ahlin	Division/Group	
CCC	K. McDonald/ S. Borowski	Division/Group	
CSP	A. Wright	Branch	III
CHP	S. Fredrick	Division/Group	C
Red Cross	R. Yoder	Division/Group	D
WAPA	B. Adams	Division/Group	F
BLM	J. Mata	Division/Group	H
		Division/Group	West Group
<b>5. Planning Section:</b>		Branch	IV
Chief	M. Petro	Division/Group	M / O
Deputy	C. Carrera	Division/Group	P
Resource Unit	Carlos/Corey/Reneau/Weber(T)/Elward(T)	Division/Group	S
Situation Unit	E. Scovel / R. DeCamp	Division/Group	
Documentation Unit	J.Patterson	Division/Group	
Demobilization Unit	T. Shevenell/ S. Spear (T)	Branch	North Cont
GISS	T. Werle/ E. Tumbleson (T)/ K. Towers	Division/Group	Shasta
FBAN	D.Bousier	Division/Group	Trinity
IMET	A. Hoon/ R. Fliehman (T)	Branch	
Training Tech Spec	D. Randolph/ C. Piccaro (T)	Division/Group	Supp. Repair
Hired Equipment Tech	Doug Grandbois	Division/Group	Redding Cover
<b>6. Logistics Section</b>		<b>Air Operations Branch</b>	
Chief	J.Morris	Air Support Grp Sup	M.Hill/ T. Smith (T)
Deputy	C. White	Helibase Manager	P. York
Supply Unit	L. Story/ M. Brabo (T)		
Facilities Unit	J. Guerra/ S. Burris	<b>8. Finance/Administration Section:</b>	
Ground Support Unit	P. Mock	Chief	J. Franklin
Communications Unit	T. Webb	Deputy	B. Counts
Medical Unit	J. Winnen	Time Unit	S.Thompson
Motel Tech Spec	S. Vaquero	Procurement Unit	C. Craig/ T. Meyers
Ordering Manager	A. Gettman/ J. Tompkins	Comp/Claims Unit	M. Boone
Food Unit	M. Mondragon	Cost Unit	S. Cain
<b>Prepared By: Name:</b>	Chris Carrera	<b>Position/Title:</b>	PSC
<b>ICS 203</b>		<b>Date/Time:</b>	8/1/2018 2216 hrs
		<b>Signature:</b>	



**Fire Weather Forecast**

**FORECAST NO:** 8  
**PREDICTION FOR:** DAY/NIGHT SHIFT  
**SHIFT DATE:** August 2, 2018  
**TIME/DATE ISSUED:** August 1, 2018 2000 PDT

**NAME OF FIRE:** Carr  
**UNIT:** CA-SHU  
**SIGNED:** Alex Hoon  
**Incident Meteorologist**

**WEATHER DISCUSSION:**     *...RED FLAG WARNING 8PM THIS EVENING THRU SATURDAY 9PM FOR GUSTY NORTH WINDS AND DRY CONDITIONS...*

Models have strengthened with north winds for tonight, showing a critical fire weather pattern for this region of Northern California. Hot, dry, and unstable conditions remain in place during the day, although with this north downslope wind, we will see dry conditions well into the overnight period with strengthening winds this evening and continuing through Friday morning. Poor recovery is expected for the mid and upper elevations with overnight humidity near 15%. Similar conditions will occur Friday night into Saturday morning.

**WEATHER FORECAST FOR THURSDAY:**     *...SMOKE INVERSION WITH LIMITED CLEARING...*

**WEATHER:** Sunny, smokey. Some clearing for Branch 2&3 in the PM.

**MAX TEMPERATURES:** 90-97°F.... around 102°F near Redding.     **LITTLE CHANGE**

**MIN HUMIDITY:** 10-15%.     **DOWN 5%**

**EYE-LEVEL WIND:** Down-drainage 2-4 mph in the morning, becoming Updrainage 3-6 mph in the afternoon.

**20-FOOT WIND:**     *...BATTLING WINDS IN THE UPPER DRAINAGES...*

**SLOPE/VALLEY -** North 4-8 mph in the morning with gusts up to 15 mph, then becoming Southeast 5-10 mph in the afternoon with gusts to 15 mph.

**RIDGETOP-** Northwest 10-15 mph gusts 25 mph in the morning, then Southwest 10 mph gusts 20 mph.

**HAINES INDEX:** 6 (in clean air)

**THURSDAY NIGHT:**     *...GUSTY NORTH WINDS TONIGHT WITH POOR RECOVERY...*

**WEATHER:** Clear and smokey.

**MIN TEMPERATURES:** 70-78°F.     **LITTLE CHANGE**

**MAX HUMIDITY:** 20-30% near 15% above 3000 feet.     **DOWN 15%**

**EYE-LEVEL WIND:**     **Becoming North-Northwest 4-8 mph with gusts to 13 mph after 2000.**

**20-FOOT WIND:**

**SLOPE/VALLEY -** Becoming North-Northwest 15-20 mph with gusts to 30 mph after 2000.  
**Gusts up to 35 mph in N-S aligned drainages.**

**RIDGETOP -** Northwest, then North 20-25 mph with gusts to 35 mph.

**EXTENDED FORECAST:**     *...RED FLAG WARNING THROUGH SATURDAY...*

**FRIDAY AND SATURDAY:** Sunny. Max temps...90-100°F. Min RH 11-15%. Southeast 5-10 mph, then North 15-20 mph after 8pm Friday night through Saturday morning. Gusts up to 30 mph Friday night.

**SUNDAY AND MONDAY:** Sunny. Max temps...87-97°F. Min RH 14-19%. South-Southwest 5-10 mph.

# FIRE BEHAVIOR FORECAST

<b>FORECAST NUMBER: 8</b>	<b>TYPE OF FIRE: Wildland Fire</b>
<b>FIRE NAME: CARR</b>	<b>OPERATIONAL PERIOD: 24hr 8/2 (0700-0700)</b>
<b>DATE ISSUED: 08/1</b>	<b>TIME ISSUED: 2100</b>
<b>UNIT: SHU</b>	<b>SIGNED: D. Boursier FBAN/LTAN</b>

## INPUTS

### WEATHER SUMMARY

**\*RED FLAG FOR NNW WINDS AND LOW RH\***  
See Weather Forecast in IAP.

## OUTPUTS

**GENERAL:                   \*\*Conditions exist for Plume Dominated Fire Behavior\*\***

Critically dry fuels with significant grass fuel loading will contribute to ember production and spotting.

Few places in the fire area offer lee wind protection to reduce fire flow rates enough for tactical advantage or safety considerations.

In the absence of weather conditions outside the forecast or extreme fire behavior conditions expect:

	Max. Flame Length	Max. Rate of Spread	Spotting	Probability of Ignition
Grass	< 10'	150 ch/hr	< ½ mile	100%
Grass/Shrub Mix	< 12'	80 ch/hr	< ½ mile	100%
Timber Understory	< 15'	20 ch/hr	< ¼ mile	100%
Timber Litter	< 8'	12 ch/hr	< ¼ mile	100%

**\*\*minimum safety zone size for brush fuels is ¼ acre for a Strike Team of Engines.**

### SPECIFIC:

#### Branch I

Smoldering with pockets of activity possible. Keep alert to structural hazards, ash pots and fire weakened trees.

#### Branch II

Fire may move rapidly with NNW winds to the south, expect the largest growth to occur overnight as winds increase. Fuel types convert to lighter and flashier grasses to the south. Dormant heat areas may flare with air movement. Roll-out and spotting potential across established lines.

#### Branch III

Downslope movement to the West. Expect roll-out and subsequent runs with crown fire up drainages. Keep alert to spot fires below in multiple directions due to variable winds.

#### Branch IV

Fire spread with torching/crown runs could occur with increased spotting distances. Look for areas of fuels treatment, timber harvest or previous fire activity for safety or control objectives. Areas closer to the Sacramento River could see previously dormant heat areas become very active with wind and decreased RH. Roll-out and spotting potential across established lines.

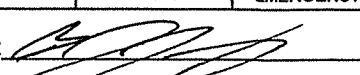
### AIR OPERATIONS:

East/West Ridges may have increased winds and turbulence over Divisions B, C, and P.  
Mixing height: 9,500 ft., Transport winds: SWS 10-15mph, Sunrise 0607, Sunset 2026.

## SAFETY

Communicate during crew tailboard briefings what YOUR definition of "Extreme Fire Behavior" is so everyone is on the same page thus reducing confusion.

## ASSIGNMENT LIST (ICS 204)

<b>1. Incident Name:</b> Carr		<b>2. Operational Period:</b> Date From: 08/02/18      Date To: 08/03/18 Time From: 0700      Time To: 0700				<b>3.</b>  Branch: I Div/Group: T/U Tango / Union	
<b>4. Operations Personnel:</b> Operations Section Chief: T. Brownell/ A. McBath (T) (Day)      Night Ops: F. Berbena Branch Director: T. Lubas      Branch Safety: M. Brookshyer / C. Gerking (T) Division/Group Supervisor: C. Fowler (T/F XBU 3001)							
<b>5. Resources Assigned:</b>		<b>** Resources Below in Bold are 12 Hour **</b>				Reporting Location, Special Equipment, Remarks, Notes, and Information Time      Location	
Resource Identifier	ALS	Leader	Personnel	Request #			
STA XSM 2276A	ALS		21	E-270	0700-0700	DP 273	
STA OES 0801A		Sjotvedt, Steven	22	E-275	0700-0700	DP 273	
STC TBD					0700-0700	DP 273	
T/F XBU 3001		Fowler, Chip	13	E-278	0700-0700	DP 273	
ENG T1 SHA 56		Pereria, Mark	3	E-263	0700-0700	DP 273	
CRW CNA TFA		Sauer, Chris	109		0700-1900	DP 273	
ENG T6 MNCC 261		Kessler, Leland	3	E-807	0700-1900	DP 273	
ENG T6 Brush 56		Lynn, Stephen	3	E-815	0700-1900	DP 273	
ENG T6 WYS 62		Mccarthy, Jacob B	1	E-813	0700-1900	DP 273	
FALM O-667		McDaniel	1	O-667	0700-1900	DP 273	
FALM O-669		Garwood, Lance	2	O-669	0700-1900	DP 273	
READ FEDOROVA O-575		Fedorova, Varvara	1	O-575	0700-1900	DP 273	
READ GARRETT O-576		Garrett, Mark	1	O-576	0700-1900	DP 273	
ARCH UEMURA O-200058		Uemura, Emilie Masako	1	O-200058	0700-1900	DP 273	
ARCH NEISS O-200059		Neiss, David Prager	1	O-200059	0700-1900	DP 273	
<b>6. Work Assignments:</b> Provide for Responder safety, civilian rescue, and evacuation. Mop up all visible smokes around structures. Mop up 300 feet from control lines. Tactical patrol.							
<b>7. Special Instructions:</b> ***ALL OUT OF STATE ENGINES ARE TO REPORT TO TEHAMA CAMP FOLLOWING SHIFT.*** ENG T6 MNCC 261, ENG T6 Brush 56, and ENG T6 WYS 62 will work with CRW CNA as T/F A.							
<b>8. Communications</b> (radio and/or phone contact numbers needed for this assignment):							
Name	Ch	Function	Rx Freq	Rx Tone	Tx Freq	Tx Tone	Notes
SHA CMD T2	1	COMMAND	154.4300	136.5	159.0150	123.0 (T2)	BASS MTN
VFIRE 23	7	TACTICAL	154.2950	156.7 (T6)	154.2950	156.7 (T6)	
CALCORD	15	MEDICAL	156.0750	156.7 (T6)	156.0750	156.7 (T6)	MEDICAL
A/G	6	A/G	159.3150	192.8	159.3150	192.8	AIR TO GROUND IS CDF TAC 17
GUARD	16	EMERGENCY	168.6250		168.6250	110.9	EMERGENCY USE ONLY
<b>9. Prepared by: Name:</b> B.J. Corey      Pos/Title: RESL      Signature: 							
<b>ICS 204</b>		Date/Time: 8/1/2018		2216 hrs			





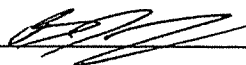
## ASSIGNMENT LIST (ICS 204)

<b>1. Incident Name:</b> Carr		<b>2. Operational Period:</b> Date From: 08/02/18    Date To: 08/03/18 Time From: 0700    Time To: 0700			<b>3.</b>  Branch: <b>II</b>  Div/Group: <b>Y</b>  <b>Yankee</b> <b>Page 1 of 2</b>			
<b>4. Operations Personnel:</b> Operations Section Chief: <b>T. Brownell/ A. McBath (T) (Day)    Night Ops: F. Berbena</b> Branch Director: <b>E. Darnall</b> Branch Safety: <b>C. Porter / N. Larusso (T)</b> Division/Group Supervisor: <b>TBD</b>								
<b>5. Resources Assigned:</b>		<b>** Resources Below in Bold are 12 Hour **</b>					Reporting Location, Special Equipment, Remarks, Notes, and Information Time                      Location	
Resource Identifier	ALS	Leader	Personnel	Request #				
STA XSM 2275A	ALS	Emil Picchi	21	E-276	0700-0700	DP 17		
STC TGU 9250C		Emerick, Andy	18	E-16	0700-0700	DP 17		
STC TBD					0700-0700	DP 17		
STC TBD					0700-0700	DP 17		
T/F XNA 2200		Martin, Jose	19	E-334	0700-0700	DP 17		
T/F TBD					<b>0700-1900</b>	<b>DP 17</b>		
STG HUU 9122G		Mahoney, James	35	C-14	0700-0700	DP 17		
STG SHU 9246G		Davis, Jim	33	C-116	0700-0700	DP 17		
TFH CNA TFC		<b>Ruiz, Jennifer</b>	<b>109</b>		<b>0700-1900</b>	<b>DP 17</b>		
ENG T6 GAS TYPE6		Griffith, William	3	E-816	0700-0700	DP 17		
ENG T6 GA-R08 2		Crane, Don	3	E-819	0700-0700	DP 17		
<b>ENG T6 WFS 9</b>		<b>Maxwell, Bryon</b>	<b>3</b>	<b>E-820</b>	<b>0700-1900</b>	<b>DP 17</b>		
DOZ SRF 4		Cedar, Hayes	4	E-34	0700-0700	DP 17		
<b>DOZ ENF 3</b>		<b>Stark, Daniel</b>	<b>4</b>	<b>E-38</b>	<b>0700-1900</b>	<b>DP 17</b>		
<b>DOZ KNF 1</b>		<b>Murieen, Jason</b>	<b>4</b>	<b>E-39</b>	<b>0700-1900</b>	<b>DP 17</b>		
DOZ TGU 2540		Oliver, Kevin	3	E-47	0700-0700	DP 17		
DOZ SHU 2440		Flournoy, Aaron	2	E-310	0700-0700	DP 17		
DOZ SHU 2444		Flournoy, Aaron	2	E-23	0700-0700	DP 17		
<b>6. Work Assignments:</b> Construct control lines as direct as possible. Improve and hold control lines. Mop up 300 feet or 100%. Prepare for possible firing operations.								
<b>7. Special Instructions:</b> <b>***ALL OUT OF STATE ENGINES ARE TO REPORT TO TEHAMA CAMP FOLLOWING SHIFT.***</b> ENG T6 GAS TYPE6, ENG T6 GA-R08 2, and ENG T6 WFS 9 will work with CRW CNA as T/F C.								
<b>8. Communications</b> (radio and/or phone contact numbers needed for this assignment):								
Name	Ch	Function	Rx Freq	Rx Tone	Tx Freq	Tx Tone	Notes	
SHA CMD T2	1	COMMAND	154.4300	136.5	159.0150	123.0 (T2)	BASS MTN	
VFIRE 25	9	TACTICAL	154.2875	156.7 (T6)	154.2875	156.7 (T6)		
CALCORD	15	MEDICAL	156.0750	156.7 (T6)	156.0750	156.7 (T6)	MEDICAL	
A/G	6	A/G	159.3150	192.8	159.3150	192.8	AIR TO GROUND IS CDF TAC 17	
GUARD	16	EMERGENCY	168.6250		168.6250	110.9	EMERGENCY USE ONLY	
<b>9. Prepared by: Name:</b> B.J. Corey		<b>Pos/Title:</b> RESL		<b>Signature:</b>				
<b>ICS 204</b>		<b>Date/Time:</b> 8/1/2018    2216 hrs						

## ASSIGNMENT LIST (ICS 204)

<b>1. Incident Name:</b> Carr		<b>2. Operational Period:</b> Date From: 08/02/18    Date To: 08/03/18 Time From: 0700    Time To: 0700			<b>3.</b>  Branch: <b>II</b>  Div/Group: <b>Y</b>  <b>Yankee</b> <b>Page 2 of 2</b>		
<b>4. Operations Personnel:</b> Operations Section Chief: <b>T. Brownell/ A. McBath (T) (Day)</b> <b>Night Ops: F. Berbena</b> Branch Director: <b>E. Darnall</b> Branch Safety: <b>C. Porter / N. Larusso (T)</b> Division/Group Supervisor: <b>TBD</b>							
<b>5. Resources Assigned:</b>		<b>** Resources Below in Bold are 12 Hour **</b>			Reporting Location, Special Equipment, Remarks, Notes, and Information Time                      Location		
Resource Identifier	ALS	Leader	Personnel	Request #			
DOZ PVT E-408		Thurman, Brian	2	E-408	0700-0700	DP 17	
DOZ PVT E-755		Ray, Clant	2	E-755	0700-0700	DP 17	
DOZ PVT E-874		Paula, Brian	3	E-874	0700-0700	DP 17	
DOZ TBD					0700-0700	DP 17	
DOZ TBD					0700-0700	DP 17	
W/T WMG 41		Walter, Mckee	2	E-45	0700-0700	DP 17	
W/T PVT E-125		Richison, Walton	2	E-125	0700-0700	DP 17	
W/T PVT E-136		Torres, Bill	2	E-136	0700-0700	DP 17	
W/T PVT E-132			2	E-132	0700-0700	DP 17	
W/T PVT E-202		Gold, Rich	2	E-202	0700-0700	DP 17	
W/T PVT E-203		Kiser, Kyle	2	E-203	0700-0700	DP 17	
W/T PVT E-205		Vanlandingham, Mike	2	E-205	0700-0700	DP 17	
W/T PVT E-206		Holden, Jesse	2	E-206	0700-0700	DP 17	
W/T PVT E-886		Newberry, Scott	2	E-886	0700-0700	DP 17	
W/T PVT E-887		Tallon, Lowell	2	E-887	0700-0700	DP 17	
<b>MAS PVT E-898</b>		<b>Spratt, Eric</b>	<b>1</b>	<b>E-898</b>	<b>0700-1900</b>	<b>DP 17</b>	
HEQB PETERSEN O-283		Petersen, Larry	1	O-283	0700-0700	DP 17	
HEQB PERKINS O-547		Perkins, Tyson	1	O-547	0700-0700	DP 17	
<b>6. Work Assignments:</b> Construct control lines as direct as possible. Improve and hold control lines. Mop up 300 feet or 100%. Prepare for possible firing operations.							
<b>7. Special Instructions:</b> <b>***ALL OUT OF STATE ENGINES ARE TO REPORT TO TEHAMA CAMP FOLLOWING SHIFT.***</b>							
<b>8. Communications</b> (radio and/or phone contact numbers needed for this assignment):							
Name	Ch	Function	Rx Freq	Rx Tone	Tx Freq	Tx Tone	Notes
SHA CMD T2	1	COMMAND	154.4300	136.5	159.0150	123.0 (T2)	BASS MTN
VFIRE 25	9	TACTICAL	154.2875	156.7 (T6)	154.2875	156.7 (T6)	
CALCORD	15	MEDICAL	156.0750	156.7 (T6)	156.0750	156.7 (T6)	MEDICAL
A/G	6	A/G	159.3150	192.8	159.3150	192.8	AIR TO GROUND IS CDF TAC 17
GUARD	16	EMERGENCY	168.6250		168.6250	110.9	EMERGENCY USE ONLY
<b>9. Prepared by: Name:</b> B.J. Corey		<b>Pos/Title:</b> RESL		<b>Date/Time:</b> 8/1/2018 2216 hrs		<b>Signature:</b>	
ICS 204							

## ASSIGNMENT LIST (ICS 204)

<b>1. Incident Name:</b> Carr		<b>2. Operational Period:</b> Date From: 08/02/18      Date To: 08/03/18 Time From: 0700      Time To: 0700				<b>3.</b>  Branch: <b>II</b>  Div/Group: <b>A</b>  <b>Alpha</b> Page 1 of 2	
<b>4. Operations Personnel:</b> Operations Section Chief: <b>T. Brownell/ A. McBath (T) (Day)      Night Ops: F. Berbena</b> Branch Director: <b>E. Darnall</b> Branch Safety: <b>C. Porter / N. Larusso (T)</b> Division/Group Supervisor: <b>A. Leonard</b>							
<b>5. Resources Assigned:</b> <b>** Resources Below in Bold are 12 Hour **</b>							
Resource Identifier	ALS	Leader	Personnel	Request #	Reporting Location, Special Equipment, Remarks, Notes, and Information	Time	Location
STC HUU 9122C		Lake, Michael	20	E-598	0700-0700		DP 55
STC TBD					0700-0700		DP 55
T/F 4231		Sommers, Ryan	18	E-281	0700-0700		DP 55
<b>STF CARR #9</b>		<b>Flores, Jason</b>	<b>17</b>	<b>E-9048</b>	<b>0700-1900</b>		<b>DP 55</b>
STG SKU 9261G		Pindell, Seth	37	C-5	0700-0700		DP 55
STG TBD					0700-0700		DP 55
STG TBD					0700-0700		DP 55
DOZ PVT E-96		Gilbert, Bruce	2	E-96	0700-0700		DP 55
DOZ PVT E-343		Wolfe, Larry	2	E-343	0700-0700		DP 55
DOZ PVT E-401		Jones, Robert	2	E-401	0700-0700		DP 55
DOZ PVT E-402		Briskt, Dale	2	E-402	0700-0700		DP 55
DOZ PVT E-403		Smith, Dade	2	E-403	0700-0700		DP 55
DOZ PVT E-405		Gill, Levi	2	E-405	0700-0700		DP 55
DOZ PVT E-409		Morrison, Matthew	2	E-409	0700-0700		DP 55
DOZ PVT E-745		Baugh, Gary	2	E-745	0700-0700		DP 55
DOZ PVT E-857		Berry, Kevin	2	E-857	0700-0700		DP 55
DOZ PVT E-858		Sanders, Danny	2	E-858	0700-0700		DP 55
<b>DOZ PVT E-865</b>		<b>Murphy, Frank</b>	<b>2</b>	<b>E-865</b>	<b>0700-1900</b>		<b>DP 55</b>
<b>6. Work Assignments:</b> Construct control lines as direct as possible. Improve and hold control lines. Mop up 300 feet or 100%. Prepare for possible firing operations.							
<b>7. Special Instructions:</b> ***ALL OUT OF STATE ENGINES ARE TO REPORT TO TEHAMA CAMP FOLLOWING SHIFT.***							
<b>8. Communications</b> (radio and/or phone contact numbers needed for this assignment):							
Name	Ch	Function	Rx Freq	Rx Tone	Tx Freq	Tx Tone	Notes
SHA CMD T2	1	COMMAND	154.4300	136.5	159.0150	123.0 (T2)	BASS MTN
VFIRE 26	10	TACTICAL	154.3025	156.7 (T6)	154.3025	156.7 (T6)	
CALCORD	15	MEDICAL	156.0750	156.7 (T6)	156.0750	156.7 (T6)	MEDICAL
A/G	6	A/G	159.3150	192.8	159.3150	192.8	AIR TO GROUND IS CDF TAC 17
GUARD	16	EMERGENCY	168.6250		168.6250	110.9	EMERGENCY USE ONLY
<b>9. Prepared by: Name:</b> B.J. Corey      Pos/Title:      RESL      Signature: 							
<b>ICS 204</b>		Date/Time: 8/1/2018		2216 hrs			

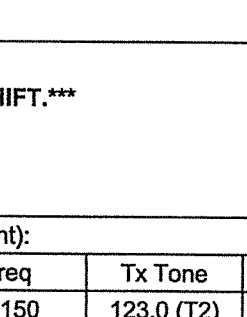
## ASSIGNMENT LIST (ICS 204)

<b>1. Incident Name:</b> Carr		<b>2. Operational Period:</b> Date From: 08/02/18      Date To: 08/03/18 Time From: 0700      Time To: 0700				<b>3.</b>  Branch: <b>II</b>  Div/Group: <b>A</b>  <b>Alpha</b> <b>Page 2 of 2</b>	
<b>4. Operations Personnel:</b> Operations Section Chief: <b>T. Brownell/ A. McBath (T) (Day)</b> <b>Night Ops: F. Berbena</b> Branch Director: <b>E. Darnall</b> Branch Safety: <b>C. Porter / N. Larusso (T)</b> Division/Group Supervisor: <b>A. Leonard</b>							
<b>5. Resources Assigned:</b>		<b>** Resources Below in Bold are 12 Hour **</b>				Reporting Location, Special Equipment, Remarks, Notes, and Information Time      Location	
Resource Identifier	ALS	Leader	Personnel	Request #			
DOZ PVT E-884		Carlton, James	2	E-884	0700-0700	DP 55	
DOZ PVT CRANE MILLS TBD			2		0700-0700	DP 55	
W/T HVF 44		Busher, Chris	2	E-26	0700-0700	DP 55	
W/T PVT E-391		Hasanbasic, Dino	2	E-391	0700-0700	DP 55	
W/T PVT E-759		Cleer, Dana	2	E-759	0700-0700	DP 55	
W/T PVT E-891		Kotterman, Dustin	2	E-891	0700-0700	DP 55	
W/T PVT CRANE MILLS TBD			2		0700-0700	DP 55	
<b>GRD PVT CRANE MILLS TBD</b>			<b>1</b>		<b>0700-1900</b>	<b>DP 55</b>	
HEQB TRIGGS O-552		Triggs, Clayton	1	O-552	0700-0700	DP 55	
HEQB TBD					0700-0700	DP 55	
FEMP HAUSELMANN O-206	ALS	Hauselmann, Joshua	1	O-206	0700-0700	DP 55	
FEMT BUNZEL O-212		Bunzel, Eric	1	O-212	0700-0700	DP 55	
<b>6. Work Assignments:</b> Construct control lines as direct as possible. Improve and hold control lines. Mop up 300 feet or 100%. Prepare for possible firing operations.							
<b>7. Special Instructions:</b> <b>***ALL OUT OF STATE ENGINES ARE TO REPORT TO TEHAMA CAMP FOLLOWING SHIFT.***</b>							
<b>8. Communications</b> (radio and/or phone contact numbers needed for this assignment):							
Name	Ch	Function	Rx Freq	Rx Tone	Tx Freq	Tx Tone	Notes
SHA CMD T2	1	COMMAND	154.4300	136.5	159.0150	123.0 (T2)	BASS MTN
VFIRE 26	10	TACTICAL	154.3025	156.7 (T6)	154.3025	156.7 (T6)	
CALCORD	15	MEDICAL	156.0750	156.7 (T6)	156.0750	156.7 (T6)	MEDICAL
A/G	6	A/G	159.3150	192.8	159.3150	192.8	AIR TO GROUND IS CDF TAC 17
GUARD	16	EMERGENCY	168.6250		168.6250	110.9	EMERGENCY USE ONLY
<b>9. Prepared by: Name:</b> B.J. Corey		Pos/Title: RESL		Signature:			
ICS 204		Date/Time: 8/1/2018 2216 hrs					





## ASSIGNMENT LIST (ICS 204)

<b>1. Incident Name:</b> Carr		<b>2. Operational Period:</b> Date From: 08/02/18      Date To: 08/03/18 Time From: 0700      Time To: 0700			<b>3.</b>  Branch: <b>III</b>  Div/Group: <b>C</b>  <b>Charlie</b> <b>Page 1 of 2</b>		
<b>4. Operations Personnel:</b> Operations Section Chief: <b>T. Brownell/ A. McBath (T) (Day)      Night Ops: F. Berbena</b> Branch Director: <b>M. Fields</b> Branch Safety: <b>G. Huff / G. Avery (T)</b> Division/Group Supervisor: <b>B. Norrbom</b>							
<b>5. Resources Assigned:</b>		<b>** Resources Below in Bold are 12 Hour **</b>			Reporting Location, Special Equipment, Remarks, Notes, and Information Time      Location		
Resource Identifier	ALS	Leader	Personnel	Request #			
STC SKU 9260C		Stone, Jason	17	E-17	0700-0700	DP 55	
STC TGU 9251C		Magana, Gerry	17	E-1	0700-0700	DP 55	
STC TBD					0700-0700	DP 55	
T/F XGL 3050		Blake, Scott	5	E-287	0700-0700	DP 55	
ENG T2 SHS 33		Perry, Amanda	3	E-669	0700-0700	DP 55	
ENG T1 WMG 41		Blough, Fred	3	E-670	0700-0700	DP 55	
ENG T3 SHA 556		Pereira, Mark	3	E-671	0700-0700	DP 55	
STG LMU 9221G		Grendahl, Scott	34	C-6	0700-0700	DP 55	
STG SHU 9243G		Smutz, Jan	35	C-29	0700-0700	DP 55	
STG TBD					0700-0700	DP 55	
<b>CRW PVT C-33</b>		<b>Rocha, Federico</b>	<b>20</b>	<b>C-33</b>	<b>0700-1900</b>	<b>DP 55</b>	
<b>CRW PVT C-34</b>		<b>Duran, Ernesto</b>	<b>20</b>	<b>C-34</b>	<b>0700-1900</b>	<b>DP 55</b>	
DOZ PVT E-51		Cattaneo, Angelo	2	E-51	0700-0700	DP 55	
DOZ PVT E-407		Ingram, Brad	3	E-407	0700-0700	DP 55	
DOZ PVT E-839		Emerson, Mel	2	E-839	0700-0700	DP 55	
DOZ PVT E-842		Landingham, Darrell	2	E-842	0700-0700	DP 55	
W/T PVT E-353		Douglas, Jason	2	E-353	0700-0700	DP 55	
<b>W/T PVT E-393</b>		<b>Troedel, Bryan</b>	<b>2</b>	<b>E-393</b>	<b>0700-1900</b>	<b>DP 55</b>	
<b>6. Work Assignments:</b> Prepare indirect control lines for possible firing operations.							
<b>7. Special Instructions:</b> ***ALL OUT OF STATE ENGINES ARE TO REPORT TO TEHAMA CAMP FOLLOWING SHIFT.***							
<b>8. Communications</b> (radio and/or phone contact numbers needed for this assignment):							
Name	Ch	Function	Rx Freq	Rx Tone	Tx Freq	Tx Tone	Notes
SHA CMD T2	1	COMMAND	154.4300	136.5	159.0150	123.0 (T2)	BASS MTN
CDF T26	7	TACTICAL	159.2925	192.8 (T16)	159.2925	192.8 (T16)	
CALCORD	15	MEDICAL	156.0750	156.7 (T6)	156.0750	156.7 (T6)	MEDICAL
A/G	6	A/G	159.3150	192.8	159.3150	192.8	AIR TO GROUND IS CDF TAC 17
GUARD	16	EMERGENCY	168.6250		168.6250	110.9	EMERGENCY USE ONLY
<b>9. Prepared by: Name:</b> B.J. Corey		<b>Pos/Title:</b> RESL		<b>Signature:</b> 			
ICS 204		Date/Time: 8/1/2018		2216 hrs			







## ASSIGNMENT LIST (ICS 204)

<b>1. Incident Name:</b> Carr		<b>2. Operational Period:</b> Date From: 08/02/18    Date To: 08/03/18 Time From: 0700    Time To: 0700			<b>3.</b>  Branch: <b>III</b>  Div/Group: <b>D</b>  <b>Delta</b> <b>Page 2 of 3</b>		
<b>4. Operations Personnel:</b> Operations Section Chief: <b>T. Brownell/ A. McBath (T) (Day)</b> Night Ops: <b>F. Berbena</b> Branch Director: <b>M. Fields</b> Branch Safety: <b>G. Huff / G. Avery (T)</b> Division/Group Supervisor: <b>S. Lauderdale</b>							
<b>5. Resources Assigned:</b>		<b>** Resources Below in Bold are 12 Hour **</b>			Reporting Location, Special Equipment, Remarks, Notes, and Information Time                      Location		
Resource Identifier	ALS	Leader	Personnel	Request #			
DOZ PVT E-840		O'connell, Brandon	2	E-840	0700-0700	DP 56	
DOZ PVT E-845		Berlogar, Cam	2	E-845	0700-0700	DP 56	
DOZ PVT E-851		Rue, Kantor	2	E-851	0700-0700	DP 56	
DOZ PVT E-860		Williams, Brandon	2	E-860	0700-0700	DP 56	
DOZ PVT E-863		Thompson, Zachery	2	E-863	0700-0700	DP 56	
DOZ PVT E-864		Miller, Harold	2	E-864	0700-0700	DP 56	
DOZ PVT E-866		Davis, Leland	2	E-866	0700-0700	DP 56	
DOZ PVT E-869		Gibson, Jeff	2	E-869	0700-0700	DP 56	
DOZ PVT E-879		Klauer, Jim	2	E-879	0700-0700	DP 56	
DOZ PVT E-881		Miles, Daniel	2	E-881	0700-0700	DP 56	
DOZ PVT E-882		Keyes, Josh	2	E-882	0700-0700	DP 56	
DOZ PVT E-963		Richerson, Don	2	E-963	0700-0700	DP 56	
<b>W/T SHF 16</b>		<b>Obst, Isaac</b>	<b>2</b>	<b>E-11</b>	<b>0700-1900</b>	<b>DP 56</b>	
<b>W/T SHS 33</b>		<b>Ron Smith</b>	<b>2</b>	<b>E-44</b>	<b>0700-1900</b>	<b>DP 56</b>	
<b>W/T SHS 55</b>		<b>Wyckoff, Fred</b>	<b>3</b>	<b>E-25</b>	<b>0700-1900</b>	<b>DP 56</b>	
W/T PVT E-135		Oilar, Danny	2	E-135	0700-0700	DP 56	
W/T PVT E-356		Tony	2	E-356	0700-0700	DP 56	
W/T PVT E-361		Debois, Scott	2	E-361	0700-0700	DP 56	
<b>6. Work Assignments:</b> Mop up 200 feet or 100%. Prepare indirect control lines for possible firing operations. Prepare structures for defensive actions.							
<b>7. Special Instructions:</b> <b>***ALL OUT OF STATE ENGINES ARE TO REPORT TO TEHAMA CAMP FOLLOWING SHIFT.***</b>							
<b>8. Communications</b> (radio and/or phone contact numbers needed for this assignment):							
Name	Ch	Function	Rx Freq	Rx Tone	Tx Freq	Tx Tone	Notes
SHA-GMD T2	1	COMMAND	154.4300	136.5	159.0150	123.0 (T2)	BASS MTN
CDF T27	8	TACTICAL	159.3075	192.8 (T16)	159.3075	192.8 (T16)	
CALCORD	15	MEDICAL	156.0750	156.7 (T6)	156.0750	156.7 (T6)	MEDICAL
A/G	6	A/G	159.3150	192.8	159.3150	192.8	AIR TO GROUND IS CDF TAC 17
GUARD	16	EMERGENCY	168.6250		168.6250	110.9	EMERGENCY USE ONLY
<b>9. Prepared by: Name:</b>		B.J. Corey		<b>Pos/Title:</b> RESL		Signature:	
<b>ICS 204</b>		Date/Time: 8/1/2018		2216 hrs			





## ASSIGNMENT LIST (ICS 204)

<b>1. Incident Name:</b> Carr		<b>2. Operational Period:</b> Date From: 08/02/18    Date To: 08/03/18 Time From: 0700    Time To: 0700			<b>3.</b>  Branch: III Div/Group: H Hotel Page 1 of 2			
<b>4. Operations Personnel:</b> Operations Section Chief: T. Brownell/ A. McBath (T) (Day)    Night Ops: F. Berbena Branch Director: M. Fields    Branch Safety: G. Huff / G. Avery (T) Division/Group Supervisor: G. Boston								
<b>5. Resources Assigned:</b>		<b>** Resources Below in Bold are 12 Hour **</b>					Reporting Location, Special Equipment, Remarks, Notes, and Information Time                      Location	
Resource Identifier	ALS	Leader	Personnel	Request #				
STC SHF 3675C		<b>Smyth, Keith</b>	<b>27</b>	<b>E-164</b>	<b>0700-1900</b>	<b>DP 21</b>		
STC TBD					0700-0700	DP 21		
STC TBD					0700-0700	DP 21		
STC TBD					0700-0700	DP 21		
STC TBD					0700-0700	DP 21		
T/F XYO 4277		Dunn, Steve	12	E-608	0700-0700	DP 21		
STF TBD					0700-0700	DP 21		
STG TGU 9252G		Brown, Matt	35	C-7	0700-0700	DP 21		
STG BTU 9213G		Sitter, Benjamin	35	C-67	0700-0700	DP 21		
STG TBD					0700-0700	DP 21		
STG TBD					0700-0700	DP 21		
STG TBD					0700-0700	DP 21		
STG TBD					0700-0700	DP 21		
DOZ PVT E-54		Edwards, Rob	2	E-54	0700-0700	DP 21		
DOZ PVT E-89		Saltens, Mike	3	E-89	0700-0700	DP 21		
DOZ PVT E-344		Lassen, Steven	2	E-344	0700-0700	DP 21		
DOZ PVT E-741		Moore, Jake	2	E-741	0700-0700	DP 21		
DOZ PVT E-847		Funes, Anthony	2	E-847	0700-0700	DP 21		
<b>6. Work Assignments:</b> Construct contingency line from County Line Rd. to Trinity Dam. Construct contingency line from Trinity Mtn. Rd. out to 34N30 to Trinity Lake.								
<b>7. Special Instructions:</b> ***ALL OUT OF STATE ENGINES ARE TO REPORT TO TEHAMA CAMP FOLLOWING SHIFT.***								
<b>8. Communications</b> (radio and/or phone contact numbers needed for this assignment):								
Name	Ch	Function	Rx Freq	Rx Tone	Tx Freq	Tx Tone	Notes	
SHA CMD T2	1	COMMAND	154.4300	136.5	159.0150	123.0 (T2)	BASS MTN	
CDF T29	10	TACTICAL	151.3475	192.8 (T16)	151.3475	192.8 (T16)		
CALCORD	15	MEDICAL	156.0750	156.7 (T6)	156.0750	156.7 (T6)	MEDICAL	
A/G	6	A/G	159.3150	192.8	159.3150	192.8	AIR TO GROUND IS CDF TAC 17	
GUARD	16	EMERGENCY	168.6250		168.6250	110.9	EMERGENCY USE ONLY	
<b>9. Prepared by: Name:</b> B.J. Corey    Pos/Title: RESL    Signature:								
<b>ICS 204</b>		Date/Time: 8/1/2018		2216 hrs				

## ASSIGNMENT LIST (ICS 204)

<b>1. Incident Name:</b> Carr		<b>2. Operational Period:</b> Date From: 08/02/18    Date To: 08/03/18 Time From: 0700    Time To: 0700			<b>3.</b>  Branch: <b>III</b>  Div/Group: <b>H</b>  <b>Hotel</b>		
<b>4. Operations Personnel:</b> Operations Section Chief: <b>T. Brownell/ A. McBath (T) (Day)</b> <b>Night Ops: F. Berbena</b> Branch Director: <b>M. Fields</b> Branch Safety: <b>G. Huff / G. Avery (T)</b> Division/Group Supervisor: <b>G. Boston</b>					<b>Page 2 of 2</b>		
<b>5. Resources Assigned:</b>		<b>** Resources Below in Bold are 12 Hour **</b>			Reporting Location, Special Equipment, Remarks, Notes, and Information Time                      Location		
Resource Identifier	ALS	Leader	Personnel	Request #			
DOZ PVT E-848		Schott, Chris	2	E-848	0700-0700	DP 21	
DOZ PVT E-849		Newby, Randy	2	E-849	0700-0700	DP 21	
DOZ PVT E-854		Nye, Kevin	2	E-854	0700-0700	DP 21	
DOZ PVT E-867		Snyder, Jeff	2	E-867	0700-0700	DP 21	
DOZ PVT E-872		Cecil, Ray	2	E-872	0700-0700	DP 21	
<b>GRD PVT E-192</b>		<b>Stenberg, Mike</b>	<b>1</b>	<b>E-192</b>	<b>0700-1900</b>	<b>DP 21</b>	
<b>FELB PVT E-828</b>		<b>Watt, Dale</b>	<b>1</b>	<b>E-828</b>	<b>0700-1900</b>	<b>DP 21</b>	
<b>FELB PVT E-829</b>		<b>Gabelles, William</b>	<b>1</b>	<b>E-829</b>	<b>0700-1900</b>	<b>DP 21</b>	
<b>FELB PVT E-830</b>		<b>Warner, Paul</b>	<b>1</b>	<b>E-830</b>	<b>0700-1900</b>	<b>DP 21</b>	
<b>FELB PVT E-831</b>		<b>Alcuna, Eddie</b>	<b>2</b>	<b>E-831</b>	<b>0700-1900</b>	<b>DP 21</b>	
<b>TRINITY LAKE T/F</b>		<b>Sgt. Gee</b>			<b>0700-1900</b>	<b>DP 21</b>	
HEQB (T) DIEDE O-579		Diede, Richard	1	O-579	0700-0700	DP 21	
HEQB TBD					0700-0700	DP 21	
HEQB TBD					0700-0700	DP 21	
HEQB TBD					0700-0700	DP 21	
<b>READ ZUSTAK O-200002</b>		<b>Zustak, Joe</b>	<b>1</b>	<b>O-200002</b>	<b>0700-1900</b>	<b>DP 21</b>	
<b>READ MERRIFIELD O-200088</b>		<b>Merrifield, Jesse</b>	<b>1</b>	<b>O-200088</b>	<b>0700-1900</b>	<b>DP 21</b>	
<b>6. Work Assignments:</b> Construct contingency line from County Line Rd. to Trinity Dam. Construct contingency line from Trinity Mtn. Rd. out to 34N30 to Trinity Lake.							
<b>7. Special Instructions:</b> ***ALL OUT OF STATE ENGINES ARE TO REPORT TO TEHAMA CAMP FOLLOWING SHIFT.***							
<b>8. Communications</b> (radio and/or phone contact numbers needed for this assignment):							
Name	Ch	Function	Rx Freq	Rx Tone	Tx Freq	Tx Tone	Notes
SHA CMD T2	1	COMMAND	154.4300	136.5	159.0150	123.0 (T2)	BASS MTN
CDF T29	10	TACTICAL	151.3475	192.8 (T16)	151.3475	192.8 (T16)	
CALCORD	15	MEDICAL	156.0750	156.7 (T6)	156.0750	156.7 (T6)	MEDICAL
A/G	6	A/G	159.3150	192.8	159.3150	192.8	AIR TO GROUND IS CDF TAC 17
GUARD	16	EMERGENCY	168.6250		168.6250	110.9	EMERGENCY USE ONLY
<b>9. Prepared by: Name:</b> B.J. Corey		<b>Pos/Title:</b> RESL		<b>Signature:</b>			
<b>ICS 204</b>		<b>Date/Time:</b> 8/1/2018    2216 hrs					



## ASSIGNMENT LIST (ICS 204)

<b>1. Incident Name:</b> Carr		<b>2. Operational Period:</b> Date From: 08/02/18      Date To: 08/03/18 Time From: 0700      Time To: 0700			<b>3.</b>  Branch: <b>III</b>  Div/Group: <b>West Group</b>	
<b>4. Operations Personnel:</b> Operations Section Chief: <b>T. Brownell/ A. McBath (T) (Day)</b> Night Ops: <b>F. Berbena</b> Branch Director: <b>M. Fields</b> Branch Safety: <b>G. Huff / G. Avery (T)</b> Division/Group Supervisor: <b>Dave Russell</b>					<b>Page 2 of 2</b>	
<b>5. Resources Assigned:</b>		<b>** Resources Below in Bold are 12 Hour **</b>			Reporting Location, Special Equipment, Remarks, Notes, and Information Time      Location	
Resource Identifier	ALS	Leader	Personnel	Request #		
W/T PVT E-890		Kotterman, Dustin	2	E-890	0700-0700	SEE SPECIAL
W/T PVT E-893		Vargas, Richie	2	E-893	0700-0700	SEE SPECIAL
MAS PVT E-760		Lester, Louis	2	E-760	0700-0700	SEE SPECIAL
EXC PVT E-764		Grass, Kelvin	2	E-764	0700-0700	SEE SPECIAL
MAS PVT E-897		<b>Gregory, Stephenie</b>	1	<b>E-897</b>	<b>0700-1900</b>	<b>SEE SPECIAL</b>
EXC PVT E-899		<b>Mccutcheon, Derick</b>	1	<b>E-899</b>	<b>0700-1900</b>	<b>SEE SPECIAL</b>
SKD PVT E-894		<b>Yokoyama, Paul</b>	1	<b>E-894</b>	<b>0700-1900</b>	<b>SEE SPECIAL</b>
SKD PVT E-895		<b>Rubini, Nathan</b>	1	<b>E-895</b>	<b>0700-1900</b>	<b>SEE SPECIAL</b>
SKD PVT E-896		<b>Connor, John</b>	1	<b>E-896</b>	<b>0700-1900</b>	<b>SEE SPECIAL</b>
HEQB MARSHALL O-89		Marshall, Dan	1	O-89	0700-0700	SEE SPECIAL
HEQB ROGERS O-90		Rogers, Dave	1	O-90	0700-0700	SEE SPECIAL
HEQB TBD					0700-0700	SEE SPECIAL
HEQB TBD					0700-0700	SEE SPECIAL
FALM O-93		<b>Piercy, Dean</b>	2	<b>O-93</b>	<b>0700-1900</b>	<b>SEE SPECIAL</b>
FALM O-95		<b>Wickstrom, Nate</b>	2	<b>O-95</b>	<b>0700-1900</b>	<b>SEE SPECIAL</b>
<b>6. Work Assignments:</b> Construct contingency behind Lewiston and up Deadwood Rd.						
<b>7. Special Instructions:</b> <b>***ALL OUT OF STATE ENGINES ARE TO REPORT TO TEHAMA CAMP FOLLOWING SHIFT.***</b> Report to Trinity Dam Blvd. x Lewiston Turnpike Rd.						
<b>8. Communications</b> (radio and/or phone contact numbers needed for this assignment):						
Name	Ch	Function	Rx Freq	Rx Tone	Tx Freq	Tx Tone      Notes
SHA CMD T2	1	COMMAND	154.4300	136.5	159.0150	123.0 (T2)      BASS MTN
CDF T32	12	TACTICAL	151.2425	192.8 (T16)	151.2425	192.8 (T16)
CALCORD	15	MEDICAL	156.0750	156.7 (T6)	156.0750	156.7 (T6)      MEDICAL
A/G	6	A/G	159.3150	192.8	159.3150	192.8      AIR TO GROUND IS CDF TAC 17
GUARD	16	EMERGENCY	168.6250		168.6250	110.9      EMERGENCY USE ONLY
<b>9. Prepared by: Name:</b> B.J. Corey      Pos/Title: RESL      Signature:						
<b>ICS 204</b>		Date/Time: 8/1/2018		2216 hrs		



## ASSIGNMENT LIST (ICS 204)

<b>1. Incident Name:</b> Carr		<b>2. Operational Period:</b> Date From: 08/02/18      Date To: 08/03/18 Time From: 0700      Time To: 0700			<b>3.</b>  Branch: <b>IV</b>  Div/Group: <b>M / O</b>  <b>Mike / Oscar</b> <b>Page 1 of 3</b>		
<b>4. Operations Personnel:</b> Operations Section Chief: <b>T. Brownell/ A. McBath (T) (Day)</b> Night Ops: <b>F. Berbena</b> Branch Director: <b>M. Webb</b> Branch Safety: <b>G. Powell / S. Sanchez (T)</b> Division/Group Supervisor: <b>M. Crosby</b>							
<b>5. Resources Assigned:</b>		<b>** Resources Below in Bold are 12 Hour **</b>			Reporting Location, Special Equipment, Remarks, Notes, and Information Time      Location		
Resource Identifier	ALS	Leader	Personnel	Request #			
STC TBD					0700-0700	WHITNEY STAGING	
STC TBD					0700-0700	WHITNEY STAGING	
<b>STC LNF 3615C</b>		<b>Nickey, John</b>	<b>27</b>	<b>E-78</b>	<b>0700-1900</b>	<b>WHITNEY STAGING</b>	
<b>T/F CARR #4</b>		<b>Nelson, Darin</b>	<b>19</b>	<b>E-9057</b>	<b>0700-1900</b>	<b>WHITNEY STAGING</b>	
<b>T/F CARR #11</b>		<b>Baker-Blockman, Chris</b>	<b>17</b>	<b>E-9061</b>	<b>0700-1900</b>	<b>WHITNEY STAGING</b>	
T/F OES 0802		Medvin, Brad	14	E-273	0700-0700	WHITNEY STAGING	
T/F XMN 6180		Smith, Colin	11	E-604	0700-0700	WHITNEY STAGING	
STG TBD					0700-0700	WHITNEY STAGING	
STG TBD					0700-0700	WHITNEY STAGING	
STG TBD					0700-0700	WHITNEY STAGING	
STG TBD					0700-0700	WHITNEY STAGING	
STG TBD					0700-0700	WHITNEY STAGING	
<b>CRW BLM WHISKEYTOWN WFM</b>		<b>Winkler, Rob</b>	<b>7</b>	<b>O-180</b>	<b>0700-1900</b>	<b>WHITNEY STAGING</b>	
<b>CRW PVT C-31</b>		<b>Moreno, Anselmo</b>	<b>20</b>	<b>C-31</b>	<b>0700-1900</b>	<b>WHITNEY STAGING</b>	
DOZ PVT E-52		Cattaneo, Angelo	2	E-52	0700-0700	WHITNEY STAGING	
DOZ PVT E-56		Caton, Jamie	2	E-56	0700-0700	WHITNEY STAGING	
DOZ PVT E-87		White, Dusty	2	E-87	0700-0700	WHITNEY STAGING	
DOZ PVT E-88		Obrien, Mike	2	E-88	0700-0700	WHITNEY STAGING	
<b>6. Work Assignments:</b> Construct and improve control lines. Hold completed control lines. Mop up 300 feet or 100%.							
<b>7. Special Instructions:</b> <b>***ALL OUT OF STATE ENGINES ARE TO REPORT TO TEHAMA CAMP FOLLOWING SHIFT.***</b>							
<b>8. Communications</b> (radio and/or phone contact numbers needed for this assignment):							
Name	Ch	Function	Rx Freq	Rx Tone	Tx Freq	Tx Tone	Notes
SHA CMD T2	1	COMMAND	154.4300	136.5	159.0150	123.0 (T2)	BASS MTN
CDF T30	11	TACTICAL	151.3925	192.8 (T16)	151.3925	192.8 (T16)	
CALCORD	15	MEDICAL	156.0750	156.7 (T6)	156.0750	156.7 (T6)	MEDICAL
A/G	6	A/G	159.3150	192.8	159.3150	192.8	AIR TO GROUND IS CDF TAC 17
GUARD	16	EMERGENCY	168.6250		168.6250	110.9	EMERGENCY USE ONLY
<b>9. Prepared by: Name:</b> B.J. Corey		Pos/Title: RESL		Signature:			
ICS 204		Date/Time: 8/1/2018		2216 hrs			





## ASSIGNMENT LIST (ICS 204)

<b>1. Incident Name:</b> Carr		<b>2. Operational Period:</b> Date From: 08/02/18    Date To: 08/03/18 Time From: 0700    Time To: 0700			<b>3.</b>  Branch: <b>IV</b>  Div/Group: <b>P</b>  <b>Papa</b> <b>Page 1 of 2</b>		
<b>4. Operations Personnel:</b> Operations Section Chief: <b>T. Brownell/ A. McBath (T) (Day)</b> <b>Night Ops: F. Berbena</b> Branch Director: <b>M. Webb</b> Branch Safety: <b>G. Powell / S. Sanchez (T)</b> Division/Group Supervisor: <b>D. Cornelssen</b>							
<b>5. Resources Assigned:</b>		<b>** Resources Below in Bold are 12 Hour **</b>			Reporting Location, Special Equipment, Remarks, Notes, and Information Time                      Location		
Resource Identifier	ALS	Leader	Personnel	Request #			
STA LFD 1002A		Fortman, Ellsworth	22	E-282	0700-0700	DP 43	
ENG T/F 2028	ALS	Pigoni, Michael	15	E-824	0700-0700	DP 43	
STC TBD					0700-0700	DP 43	
STC TBD					0700-0700	DP 43	
STG TBD					0700-0700	DP 43	
STG TBD					0700-0700	DP 43	
STG TBD					0700-0700	DP 43	
STG TBD					0700-0700	DP 43	
STG TBD					0700-0700	DP 43	
<b>CRW 2 TBD</b>					<b>0700-1900</b>	<b>DP 43</b>	
<b>CRW 2 TBD</b>					<b>0700-1900</b>	<b>DP 43</b>	
<b>CRW 2 TBD</b>					<b>0700-1900</b>	<b>DP 43</b>	
<b>CRW 2 TBD</b>					<b>0700-1900</b>	<b>DP 43</b>	
STL LMU 9222L		Cox, Christopher	7	E-21	0700-0700	DP 43	
<b>DOZ PVT E-404</b>		<b>Montz, John</b>	<b>3</b>	<b>E-404</b>	<b>0700-1900</b>	<b>DP 43</b>	
DOZ PVT E-744		Boggs, Steve	2	E-744	0700-0700	DP 43	
DOZ PVT E-749		Parmeter, Doug	2	E-749	0700-0700	DP 43	
DOZ PVT E-750		Parmeter, Wes	2	E-750	0700-0700	DP 43	
DOZ PVT E-752		Perry, Brett	4	E-752	0700-0700	DP 43	
<b>6. Work Assignments:</b> Construct and improve control lines. Hold completed control lines. Mop up 300 feet or 100%.							
<b>7. Special Instructions:</b> <b>***ALL OUT OF STATE ENGINES ARE TO REPORT TO TEHAMA CAMP FOLLOWING SHIFT.***</b>							
<b>8. Communications</b> (radio and/or phone contact numbers needed for this assignment):							
Name	Ch	Function	Rx Freq	Rx Tone	Tx Freq	Tx Tone	Notes
SHA-GMD T2	1	COMMAND	154.4300	136.5	159.0150	123.0 (T2)	BASS MTN
NIFC T6	13	TACTICAL	166.7750	131.8 (T3)	166.7750	131.8 (T3)	
CALCORD	15	MEDICAL	156.0750	156.7 (T6)	156.0750	156.7 (T6)	MEDICAL
A/G	6	A/G	159.3150	192.8	159.3150	192.8	AIR TO GROUND IS CDF TAC 17
GUARD	16	EMERGENCY	168.6250		168.6250	110.9	EMERGENCY USE ONLY
<b>9. Prepared by: Name:</b> B.J. Corey <b>Pos/Title:</b> RESL <b>Signature:</b>							
<b>ICS 204</b>		<b>Date/Time:</b> 8/1/2018		<b>2216 hrs</b>			



## ASSIGNMENT LIST (ICS 204)

<b>1. Incident Name:</b> Carr		<b>2. Operational Period:</b> Date From: 08/02/18    Date To: 08/03/18 Time From: 0700    Time To: 0700				<b>3.</b>  Branch: <b>IV</b>  Div/Group: <b>S</b>  <b>Sierra</b>	
<b>4. Operations Personnel:</b> Operations Section Chief: <b>T. Brownell/ A. McBath (T) (Day)</b> <b>Night Ops: F. Berbena</b> Branch Director: <b>M. Webb</b> Branch Safety: <b>G. Powell / S. Sanchez (T)</b> Division/Group Supervisor: <b>TBD</b>							
<b>5. Resources Assigned:</b>		<b>** Resources Below in Bold are 12 Hour **</b>				Reporting Location, Special Equipment, Remarks, Notes, and Information Time                      Location	
Resource Identifier	ALS	Leader	Personnel	Request #			
STA OES 1821A		Nunez,scott	22	E-274	0700-0700	DP 44	
<b>CRW CNA TFD</b>		<b>Haynes, Steve</b>	<b>109</b>		<b>0700-1900</b>	<b>DP 44</b>	
<b>ENG T3 CEA 66</b>		<b>Buchanan, Ben</b>	<b>4</b>	<b>E-230</b>	<b>0700-1900</b>	<b>DP 44</b>	
<b>ENG T3 NWS 1262</b>		<b>Ward, James</b>	<b>3</b>	<b>E-368</b>	<b>0700-1900</b>	<b>DP 44</b>	
DOZ PVT E-94		Bruce Miller	2	E-94	0700-0700	DP 44	
DOZ PVT E-241		Larue, Clint	2	E-241	0700-0700	DP 44	
DOZ PVT E-242		Drue, Gangbin	2	E-242	0700-0700	DP 44	
DOZ PVT E-342		Leland, Ward	2	E-342	0700-0700	DP 44	
DOZ PVT E-346		Looper, John	2	E-346	0700-0700	DP 44	
DOZ PVT E-349		Darrah, Keith	2	E-349	0700-0700	DP 44	
W/T PVT E-394		Troedel, Bryan	1	E-394	0700-0700	DP 44	
W/T PVT E-398		Craig, Davis	2	E-398	0700-0700	DP 44	
W/T PVT E-639		John Traumiller	2	E-639	0700-0700	DP 44	
W/T PVT E-889		Vieyra, Rich	2	E-889	0700-0700	DP 44	
<b>6. Work Assignments:</b> Construct and improve control lines. Hold completed control lines. Mop up 300 feet or 100%.							
<b>7. Special Instructions:</b> <b>***ALL OUT OF STATE ENGINES ARE TO REPORT TO TEHAMA CAMP FOLLOWING SHIFT.***</b> ENG T3 CEA 66, and ENG T3 NWS 1262 will work with CRW CNA as T/F D.							
<b>8. Communications</b> (radio and/or phone contact numbers needed for this assignment):							
Name	Ch	Function	Rx Freq	Rx Tone	Tx Freq	Tx Tone	Notes
SHA CMD T2	1	COMMAND	154.4300	136.5	159.0150	123.0 (T2)	BASS MTN
NIFC T7	14	TACTICAL	168.2500	131.8 (T3)	168.2500	131.8 (T3)	
CALCORD	15	MEDICAL	156.0750	156.7 (T6)	156.0750	156.7 (T6)	MEDICAL
A/G	6	A/G	159.3150	192.8	159.3150	192.8	AIR TO GROUND IS CDF TAC 17
GUARD	16	EMERGENCY	168.6250		168.6250	110.9	EMERGENCY USE ONLY
<b>9. Prepared by: Name:</b> B.J. Corey		<b>Pos/Title:</b> RESL		<b>Date/Time:</b> 8/1/2018 2216 hrs		<b>Signature:</b>	
ICS 204							

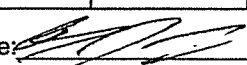
## ASSIGNMENT LIST (ICS 204)

<b>1. Incident Name:</b> Carr		<b>2. Operational Period:</b> Date From: 08/02/18      Date To: 08/03/18 Time From: 0700              Time To: 0700				<b>3.</b>  Branch: <b>North Cont</b>  Div/Group: <b>Shasta</b>  <b>Page 1 of 2</b>	
<b>4. Operations Personnel:</b> Operations Section Chief: <b>T. Brownell/ A. McBath (T) (Day)</b> <b>Night Ops: F. Berbena</b> Branch Director: <b>J. Brunk</b> Branch Safety: <b>S. Wilson</b> Division/Group Supervisor: <b>J. Reglin</b> <b>(12hr) / E. D'amico</b>							
<b>5. Resources Assigned:</b>		<b>** Resources Below in Bold are 12 Hour **</b>				Reporting Location, Special Equipment, Remarks, Notes, and Information Time    Location	
Resource Identifier	ALS	Leader	Personnel	Request #			
CRW SRF UKONOM		<b>Berg, Joel</b>	<b>19</b>	<b>C-200004</b>	<b>0700-1900</b>	<b>LAKESHORE STA.</b>	
CRW PVT C-200000		<b>Campbell, Brandon</b>	<b>20</b>	<b>C-200000</b>	<b>0700-1900</b>	<b>LAKESHORE STA.</b>	
CRW PVT C-200001		<b>Campbell, Jason</b>	<b>20</b>	<b>C-200001</b>	<b>0700-1900</b>	<b>LAKESHORE STA.</b>	
DOZ SHF 79		<b>Rivers, Victor</b>	<b>3</b>	<b>E-200000</b>	<b>0700-1900</b>	<b>LAKESHORE STA.</b>	
DOZ MDF 4		<b>St John, Perry</b>	<b>2</b>	<b>E-200001</b>	<b>0700-1900</b>	<b>LAKESHORE STA.</b>	
DOZ PVT E-200007		<b>Clark, Steve</b>	<b>2</b>	<b>E-200007</b>	<b>0700-1900</b>	<b>LAKESHORE STA.</b>	
DOZ PVT E-200008		<b>Johnson, Bob</b>	<b>2</b>	<b>E-200008</b>	<b>0700-1900</b>	<b>LAKESHORE STA.</b>	
DOZ PVT E-200009		<b>McLaren, Richard</b>	<b>2</b>	<b>E-200009</b>	<b>0700-1900</b>	<b>LAKESHORE STA.</b>	
DOZ PVT E-200010		<b>Humphrey, Ronald</b>	<b>2</b>	<b>E-200010</b>	<b>0700-1900</b>	<b>LAKESHORE STA.</b>	
DOZ PVT E-200011		<b>Furtado, Shawn</b>	<b>2</b>	<b>E-200011</b>	<b>0700-1900</b>	<b>LAKESHORE STA.</b>	
DOZ PVT E-200017		<b>Henthorn, Jeff</b>	<b>2</b>	<b>E-200017</b>	<b>0700-1900</b>	<b>LAKESHORE STA.</b>	
MAS PVT E-200004					<b>0700-1900</b>	<b>LAKESHORE STA.</b>	
TFLD BORLAUG O-200030		<b>Borlaug, Erik</b>	<b>1</b>	<b>O-200030</b>	<b>0700-1900</b>	<b>LAKESHORE STA.</b>	
TFLD ANDERSON O-200000		<b>Anderson, Mike</b>	<b>1</b>	<b>O-200000</b>	<b>0700-1900</b>	<b>LAKESHORE STA.</b>	
TFLD (T) MENAGO		<b>Menago, Matt</b>	<b>1</b>		<b>0700-1900</b>	<b>LAKESHORE STA.</b>	
TFLD HARRIS O-200050		<b>Harris, Tyler W</b>	<b>1</b>	<b>O-200050</b>	<b>0700-1900</b>	<b>LAKESHORE STA.</b>	
HEQB BERNWELL		<b>Bernwell, Brandon</b>	<b>1</b>		<b>0700-1900</b>	<b>LAKESHORE STA.</b>	
HEQB (T) GREGORY O-200049		<b>Gregory, Michael</b>	<b>1</b>	<b>O-200049</b>	<b>0700-1900</b>	<b>LAKESHORE STA.</b>	
<b>6. Work Assignments:</b> Reopen and prepare existing dozer lines on Backbone Ridge from Shasta Lake to Dog Creek Mtn. Prepare Road 35N77 from Dog Creek Mtn south to Road 35N38 to Schell Mtn. Reopen and prepare existing dozer lines from Schell Mtn south to Wild Cow Mtn. Establish dozer line from Wild Cow Mtn to Trinity Mtn Road.							
<b>7. Special Instructions:</b> <b>***ALL OUT OF STATE ENGINES ARE TO REPORT TO TEHAMA CAMP FOLLOWING SHIFT.***</b>							
<b>8. Communications</b> (radio and/or phone contact numbers needed for this assignment):							
Name	Ch	Function	Rx Freq	Rx Tone	Tx Freq	Tx Tone	Notes
SHA CMD T2	1	COMMAND	154.4300	136.5	159.0150	123.0 (T2)	BASS MTN
NIFC T6	12	TACTICAL	166.7750	131.8 (T3)	166.7750	131.8 (T3)	
CALCORD	15	MEDICAL	156.0750	156.7 (T6)	156.0750	156.7 (T6)	MEDICAL
A/G	6	A/G	159.3150	192.8	159.3150	192.8	AIR TO GROUND IS CDF TAC 17
GUARD	16	EMERGENCY	168.6250		168.6250	110.9	EMERGENCY USE ONLY
<b>9. Prepared by: Name:</b> B.J. Corey    Pos/Title: RESL    Signature:							
<b>ICS 204</b>		Date/Time: 8/1/2018		2216 hrs			





## ASSIGNMENT LIST (ICS 204)

<b>1. Incident Name:</b> Carr		<b>2. Operational Period:</b> Date From: 08/02/18    Date To: 08/03/18 Time From: 0700    Time To: 0700				<b>3.</b>  Branch: <b>North Cont</b>  Div/Group: <b>Trinity</b>	
<b>4. Operations Personnel:</b> Operations Section Chief: <b>T. Brownell/ A. McBath (T) (Day)</b> <b>Night Ops: F. Berbena</b> Branch Director: <b>J. Brunk</b> Branch Safety: <b>S. Wilson (12hr) / E. D'amico</b> Division/Group Supervisor: <b>P. Bell</b>							
<b>5. Resources Assigned:</b>		<b>** Resources Below in Bold are 12 Hour **</b>				Reporting Location, Special Equipment, Remarks, Notes, and Information Location	
Resource Identifier	ALS	Leader	Personnel	Request #	Time		
TFLD MATA O-200001		<b>Mata, Abel</b>	<b>1</b>	<b>O-200001</b>	<b>0700-1900</b>	<b>LAKESHORE STA.</b>	
TFLD HENDRICKS O-200021		<b>Hendricks, Benjamin</b>	<b>1</b>	<b>O-200021</b>	<b>0700-1900</b>	<b>LAKESHORE STA.</b>	
DOZ PVT E-200002		<b>Cross, Chris</b>	<b>2</b>	<b>E-200002</b>	<b>0700-1900</b>	<b>LAKESHORE STA.</b>	
DOZ PVT E-200003		<b>Lindauer, Howie</b>	<b>2</b>	<b>E-200003</b>	<b>0700-1900</b>	<b>LAKESHORE STA.</b>	
DOZ PVT E-200006		<b>Warner, Gary</b>	<b>3</b>	<b>E-200006</b>	<b>0700-1900</b>	<b>LAKESHORE STA.</b>	
DOZ PVT E-200019		<b>Hays, Bob</b>	<b>2</b>	<b>E-200019</b>	<b>0700-1900</b>	<b>LAKESHORE STA.</b>	
DOZ PVT E-200020		<b>Mann, Mark</b>	<b>2</b>	<b>E-200020</b>	<b>0700-1900</b>	<b>LAKESHORE STA.</b>	
GRD PVT E-200012		<b>Janc, Richard</b>	<b>1</b>	<b>E-200012</b>	<b>0700-1900</b>	<b>LAKESHORE STA.</b>	
W/T PVT E-200013		<b>Jungwirth, Jerry</b>	<b>1</b>	<b>E-200013</b>	<b>0700-1900</b>	<b>LAKESHORE STA.</b>	
W/T PVT E-200014			<b>1</b>	<b>E-200014</b>	<b>0700-1900</b>	<b>LAKESHORE STA.</b>	
THSP PENLAND		<b>Penland, Jesse</b>			<b>0700-1900</b>	<b>LAKESHORE STA.</b>	
READ (T) PADILLA O-200019		<b>Padilla, Matthew</b>	<b>1</b>	<b>O-200019</b>	<b>0700-1900</b>	<b>LAKESHORE STA.</b>	
FOBS HURLEY O-200026		<b>Hurley, Lucas</b>	<b>1</b>	<b>O-200026</b>	<b>0700-1900</b>	<b>LAKESHORE STA.</b>	
REMS XLC 1		<b>Malouf, Adam</b>	<b>4</b>	<b>O-582</b>	<b>0700-1900</b>	<b>LAKESHORE STA.</b>	
FEMP DUNHAM O-191	ALS	<b>Dunham, Michael</b>	<b>1</b>	<b>O-191</b>	<b>0700-1900</b>	<b>LAKESHORE STA.</b>	
FEMT WATSON O-200011		<b>Watson, Matthew</b>	<b>1</b>	<b>O-200011</b>	<b>0700-1900</b>	<b>LAKESHORE STA.</b>	
<b>6. Work Assignments:</b> Construct contingency line from Bear Creek Mtn. to County Line Rd. Prepare indirect control lines for possible firing operations.							
<b>7. Special Instructions:</b> ***ALL OUT OF STATE ENGINES ARE TO REPORT TO TEHAMA CAMP FOLLOWING SHIFT.***							
<b>8. Communications</b> (radio and/or phone contact numbers needed for this assignment):							
Name	Ch	Function	Rx Freq	Rx Tone	Tx Freq	Tx Tone	Notes
SHA CMD T2	1	COMMAND	154.4300	136.5	159.0150	123.0 (T2)	BASS MTN
NIFC T6	12	TACTICAL	166.7750	131.8 (T3)	166.7750	131.8 (T3)	
CALCORD	15	MEDICAL	156.0750	156.7 (T6)	156.0750	156.7 (T6)	MEDICAL
A/G	6	A/G	159.3150	192.8	159.3150	192.8	AIR TO GROUND IS CDF TAC 17
GUARD	16	EMERGENCY	168.6250		168.6250	110.9	EMERGENCY USE ONLY
<b>9. Prepared by: Name:</b> B.J. Corey <b>Pos/Title:</b> RESL <b>Signature:</b> 							
<b>ICS 204</b>		<b>Date/Time:</b> 8/1/2018		<b>2216 hrs</b>			



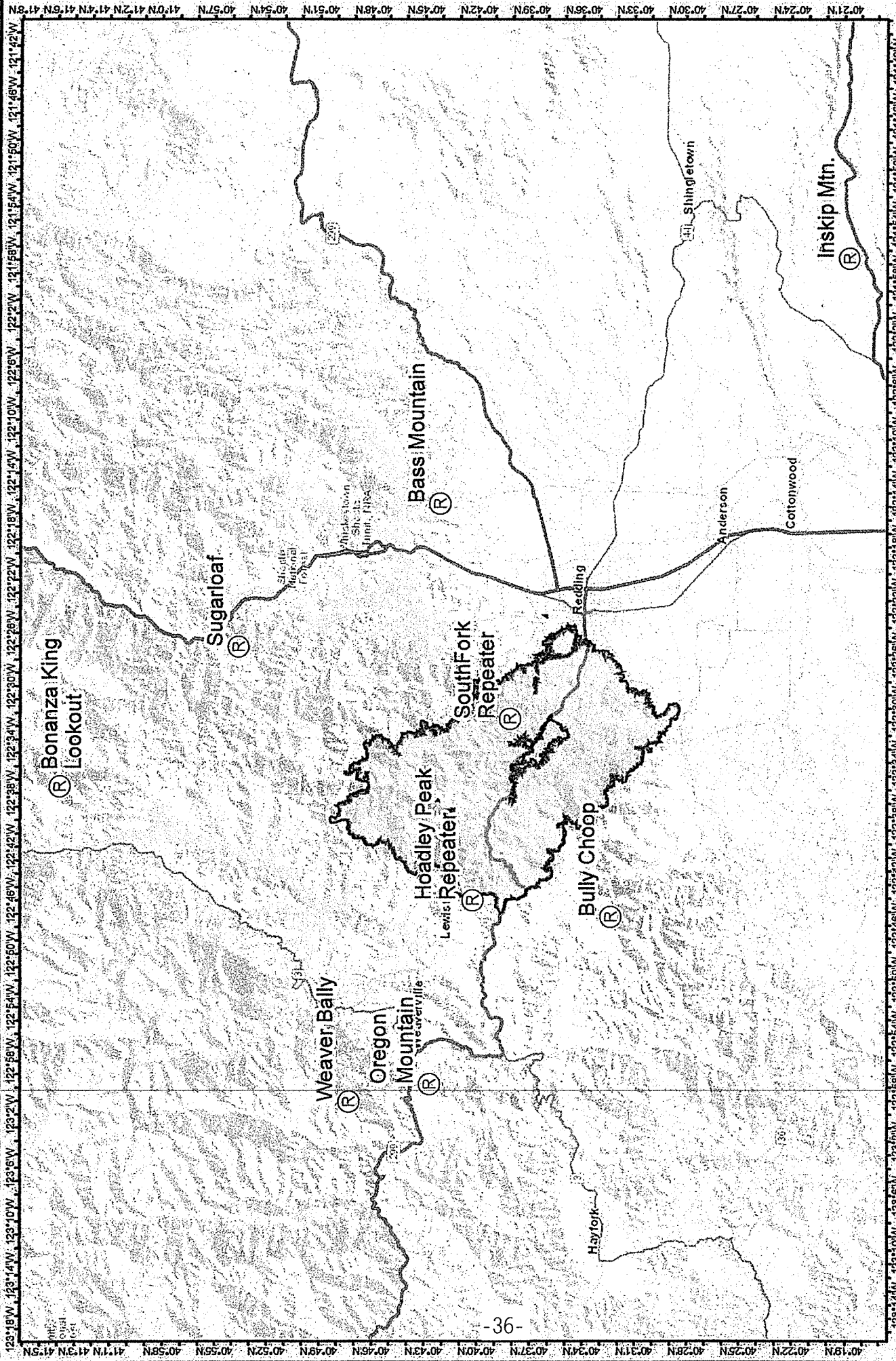


# ICS 205 - INCIDENT RADIO COMMUNICATIONS PLAN

<b>1. Incident Name:</b> Carr Branches I, II, and Cont.		<b>2. Date/Time Prepared</b> Date: 08/01/2018 Time: 1830		<b>3. Operational Period:</b> Date From: 08/02/18 Time From: 0700 Date To: 08/03/18 Time To: 0700				
4. Communications								
Ch#	Function	Name	Assigned To	Rx Freq	Rx Tone	Tx Freq	Tx Tone	Notes
1	COMMAND	SHA CMD T2	ALL DIVISIONS	154.4300	136.5	159.0150	123.0 (T2)	BASS MTN
2	COMMAND	SHA CMD T4	ALL DIVISIONS	154.4300	136.5	159.0150	136.5 (T4)	INSKIP MTN
3	COMMAND	SHA CMD T14	ALL DIVISIONS	154.4300	136.5	159.0150	151.4 (T14)	HOADLEY MTN
4	COMMAND	SHA CMD T15	ALL DIVISIONS	154.4300	136.5	159.0150	162.2 (T15)	SUGARLOAF MTN
5	COMMAND	GALAW1	ALL DIVISIONS	154.9200	0	154.9200	0	LE INTEROPERABILITY
6	A/G	A/G	INCIDENT WIDE	159.3150	192.8	159.3150	192.8	AIR TO GROUND IS CDF TAC 17
7	TACTICAL	VFIRE 23	DIV T / U	154.2950	156.7 (T6)	154.2950	156.7 (T6)	
8	TACTICAL	VFIRE 24	DIV V / X	154.2725	156.7 (T6)	154.2725	156.7 (T6)	
9	TACTICAL	VFIRE 25	DIV Y	154.2875	156.7 (T6)	154.2875	156.7 (T6)	
10	TACTICAL	VFIRE 26	DIV A	154.3025	156.7 (T6)	154.3025	156.7 (T6)	
11	TACTICAL	NIFC T5	DIV B	166.7250	131.8 (T3)	166.7250	131.8 (T3)	
12	TACTICAL	NIFC T6	NORTH CONT	166.7750	131.8 (T3)	166.7750	131.8 (T3)	
13	TACTICAL	NIFC T7	UNASSIGNED	168.2500	131.8 (T3)	168.2500	131.8 (T3)	
14	TACTICAL	CDF T32	West	151.2425	192.8 (T16)	151.2425	192.8 (T16)	
15	MEDICAL	CALCORD	INCIDENT WIDE	156.0750	156.7 (T6)	156.0750	156.7 (T6)	MEDICAL
16	EMERGENCY	GUARD	INCIDENT WIDE	168.6250		168.6250	110.9	EMERGENCY USE ONLY
17								
18								
19								
20	EMERGENCY	GUARD	ALL DIVISIONS	168.6250		168.6250	110.9	EMERGENCY USE ONLY
5. Special Instructions								
6. Prepared by (Communications Unit Leader): Name: Tom Webb								
Signature: <u>Tom Webb</u> Date/Time: 08/01/18 1830								
ICS 205 - CONTROLLED UNCLASSIFIED INFORMATION//BASIC								

# ICS 205 - INCIDENT RADIO COMMUNICATIONS PLAN

<b>1. Incident Name:</b> Carr Branches III and IV		<b>2. Date/Time Prepared</b> Date: 08/01/2018 Time: 1830		<b>3. Operational Period:</b> Date From: 08/02/18 Time From: 0700		Date To: 08/03/18 Time To: 0700		
<b>4. Communications</b>								
Ch#	Function	Name	Assigned To	Rx Freq	Rx Tone	Tx Freq	Tx Tone	Notes
1	COMMAND	SHA CMD T2	All Divisions	154.4300	136.5	159.0150	123.0 (T2)	BASS MTN
2	COMMAND	SHA CMD T4	All Divisions	154.4300	136.5	159.0150	136.5 (T4)	INSKIP MTN
3	COMMAND	SHA CMD T14	All Divisions	154.4300	136.5	159.0150	151.4 (T14)	HOADLEY MTN
4	COMMAND	SHA CMD T15	All Divisions	154.4300	136.5	159.0150	162.2 (T15)	SUGARLOAF MTN
5	COMMAND	CALAW1	All Divisions	154.9200	0	154.9200	0	LE INTEROPERABILITY
6	A/G	A/G	INCIDENT WIDE	159.3150	192.8	159.3150	192.8	AIR TO GROUND IS CDF TAC 17
7	TACTICAL	CDF T26	DIV C	159.2925	192.8 (T16)	159.2925	192.8 (T16)	
8	TACTICAL	CDF T27	DIV D	159.3075	192.8 (T16)	159.3075	192.8 (T16)	
9	TACTICAL	CDF T28	DIV F	151.1825	192.8 (T16)	151.1825	192.8 (T16)	
10	TACTICAL	CDF T29	DIV H	151.3475	192.8 (T16)	151.3475	192.8 (T16)	
11	TACTICAL	CDF T30	DIV M / O	151.3925	192.8 (T16)	151.3925	192.8 (T16)	
12	TACTICAL	CDF T32	West	151.2425	192.8 (T16)	151.2425	192.8 (T16)	
13	TACTICAL	NIFC T6	DIV P and North	166.7750	131.8 (T3)	166.7750	131.8 (T3)	
14	TACTICAL	NIFC T7	DIV S	168.2500	131.8 (T3)	168.2500	131.8 (T3)	
15	MEDICAL	CALCORD	INCIDENT WIDE	156.0750	156.7 (T6)	156.0750	156.7 (T6)	MEDICAL
16	EMERGENCY	GUARD	INCIDENT WIDE	168.6250		168.6250	110.9	EMERGENCY USE ONLY
17								
18								
19								
20	EMERGENCY	GUARD	All Divisions	168.6250		168.6250	110.9	EMERGENCY USE ONLY
<b>5. Special Instructions</b>								
<b>6. Prepared by (Communications Unit Leader):</b> Name: Tom Webb			Signature: <i>Tom Webb</i>		Date/Time: 08/01/18 1830			
<b>ICS 205 - CONTROLLED UNCLASSIFIED INFORMATION//BASIC</b>								



**Communication Map**  
Carr Fire  
CA-SHU-007808

Carr Fire  
CA-SHU-007808  
**COMMS**  
Aug 2, 2018

© Camp  
Incident Command Post  
Drop Point

Scale: 0 5 10 Miles

## SAFETY MESSAGE/PLAN (ICS 208)

INCIDENT NAME:  
CARR FIRE CA-SHU-007808

Operational Period: Date From: 8/2/18      Date to: 8/3/18  
Time From: 0700      Time to: 0700

### MAJOR HAZARDS AND RISKS

- **REPOPULATION:** Be aware and respectful of the public returning to their homes.
- **RE-ENERGIZED POWER TRANSMISSION LINES:** Be aware that lines may be live.

**HAZARDOUS TREES AND SNAGS:** Be alert of snags due to tree mortality and drought. Crews are working in a very hazardous area with numerous dead trees, stay diligent and flag hazardous areas. Avoid taking breaks under trees.

**HYDRATION/NUTRITION/FATIGUE:** Drink plenty of fluids throughout the day and eat accordingly. Address dehydration and fatigue concerns immediately upon symptom onset.

**DRIVING:** Steep, narrow, dusty roads throughout fire area. Maintain safe following distances and appropriate speed when traversing roads. Flag unstable roads and other hazards that may be encountered while driving.

**RESOURCE ACCOUNTABILITY:** Maintain prompt communications with your forces, your supervisor and adjoining forces. Give clear instructions and ensure they are understood.

**COMMUNICATIONS:** Confirm all personnel have latest clone, test prior to going to line. Utilize human repeaters as necessary. Try alternative channels if unsuccessful with primary. Receive a good briefing, at the end of your briefing you should be able to understand the **TASK-PURPOSE** and **END STATE** of your assignment. If not clear ask questions

**FIRE BEHAVIOR/WEATHER:** Watch for winds to increase throughout the day and switch direction to come out of the NE. Maintain Situational Awareness and develop Decision Points for when to change your tactics.

**BOAT/WATER SAFETY:** A briefing on the watercraft shall occur prior to departure, PFD's will be worn within 10' of the water line, no watercraft transportation after dark, a weather forecast shall be obtained prior to launching, follow manufacturer recommendations for safe operation.

**MARIJUANA GROWS:** As fire personnel enter into Branch II and III, beware of large marijuana grows and chemicals in the area. If chemicals catch fire take appropriate actions to stay a safe distance away. Flag these areas to prevent accidental entry by fire personnel.

**COMMON DENOMINATORS OF FIRE BEHAVIOR ON TRADEGY FIRES:** On relatively small fires or deceptively quiet areas of large fires. In relatively light fuels, such as grass, and light brush. When there is an unexpected shift in wind direction or in wind speed. When fire responds to topographic conditions and runs uphill.

Prepared By: Anthony Stornetta  
Signature: \_\_\_\_\_

Position/Title: SOF1(T)

ICS 208      IAP Page      Date/Time: 8/1<sup>st</sup> 1840 hrs.

# MEDICAL PLAN (ICS 206)

<b>1. Incident Name:</b> <b>CARR INCIDENT</b>	<b>2. Operational Period:</b> Date From: 08/02/2018 Time From: 07:00	<b>Date To:</b> 08/03/2018 <b>Time To:</b> 07:00
--	--	---

<b>3. Medical Aid Stations:</b>		<b>MEDICAL UNIT LEADER: (408) 710-7196</b>	<b>COMMUNICATIONS UNIT: (530) 949-6816</b>
Name	Location	Contact Number(s)/Frequency	Paramedics on Site?
MERT	BASE CAMP (BY CDC SLEEPING AREA)	(530) 310-0716	RN & PA
EXPEDITORS	ANDERSON FAIRGROUNDS (NEAR BRIEFING)	---	NONE
FRONTLINE MEDICAL	RED BLUFF FAIRGROUNDS	(530) 604-8380	PARAMEDICS

<b>4. Transportation (indicate air or ground):</b>			
Ambulance Service	Location	Contact Number(s)/Frequency	Level of Service
AMR 145	HWY 299 X MAGNOLIA & BASE CAMP	SHASTA COMMAND	ALS
MERCY 115	HWY 299 X MAGNOLIA AVE & BASE CAMP	SHASTA COMMAND	ALS
TRINITY MEDIC 8	FAIRVIEW MARINA, TRINITY COUNTY	SHASTA COMMAND	ALS
REACH AIRSHIP 5	1524 East St. Redding	(877) 939-6300	RN
PHI AIR MED	5900 Old Oregon Trail Redding	(800) 597-9571	RN
CHP 14 & 16 (HOIST)	2651 Gold Street (Benton Airpark), Redding	(530) 225-2040	ALS/HOIST
NATIONAL GUARD 840	REDDING MUNI HELIBASE	CDF COMMAND 2 T14	24 HOUR HOIST

<b>5. Hospitals:</b>							
Hospital Name	Address, Latitude & Longitude if Helipad	Contact Number(s)/Frequency	Travel Time		Trauma Center	Burn Center	Helipad
			Air	Ground			
SHASTA REG MED CTR MED 2	1100 BUTTE ST, REDDING 40° 35.106'N, 122° 23.268'W	(530) 244-5400 468.025 Tx, 468.025 Rx PL 5	10 MIN	29 MIN	YES LEVEL: 3	NO	YES
MERCY MED CTR MED 4	2175 ROSALINE AVE, REDDING 40° 34.332'N, 122° 23.796'W	(530) 225-7201 468.075 Tx, 463.000 Rx PL 5	10 MIN	29 MIN	YES LEVEL: 2	NO	YES
UC DAVIS MED 8	2315 STOCKTON BLVD SACRAMENTO 38° 33.360'N, 121° 27.330'W	(916) 734-2011 446.525 Tx, 203.5 Rx	1.25 HOUR	3.5 HOUR	YES Level: 1	YES	YES
Trinity Hospital Weaverville	60 Easter Avenue Weaverville N40° 44.275' W122° 56.359'	(530) 623-5541 x1	20 MIN	45 MIN	NO	NO	YES

<p><b>6. Special Medical Emergency Procedures:</b> <b>LINE EMERGENCY:</b> Crew Supervisor to contact Division Supervisor with patient complaint/condition, location, and resource needs.</p> <ul style="list-style-type: none"> <li>• Division Supervisor contacts and gives report on conditions, complaint/condition, and resource needs to:             <ol style="list-style-type: none"> <li>1. Nearest Line FEMT/FEMP</li> <li>2. Communications Unit</li> </ol> </li> <li>• Emergency or Priority traffic received: Communication Unit will clear the command channel for emergency traffic only, for the duration of the MAJOR IWI</li> <li>• Communications Unit will make proper notifications</li> <li>• OPERATIONS can declare a MAJOR IWI based on the report on conditions from the division supervisor</li> <li>• Division Supervisor or designee will serve as point of contact (IWI SUPERVISOR) and run the emergency utilizing the <u>COMMAND CHANNEL</u> and <u>CALCORD</u> for the tac net during the IWI</li> </ul> <p><b>**ALL EMERGENCIES: Secure the area and identify witnesses for later investigation. Keep an accurate log of events**</b></p> <p style="text-align: center;"><b>***START 20 MINUTE TIMER IF IWI***</b></p>	<p><b>BASE CAMP EMERGENCY:</b> <b>CONTACT COMMUNICATIONS UNIT AT: (530) 949-6816</b> report patient complaint/condition and location. Medical Staff will respond to stabilize incident</p> <ul style="list-style-type: none"> <li>• COMMUNICATIONS Unit contacts:             <ol style="list-style-type: none"> <li>1. Operations</li> <li>2. Medical</li> <li>3. Safety</li> <li>4. Logistics</li> </ol> </li> </ul> <p><b>INJURY REPORTING PROCEDURES</b> CHIEF COMPLAINT _____ LOCATION OF PATIENT _____ TRANSPORT REQUEST BY: AIR _____ GROUND _____ DIVISION _____ CREW _____ POINT OF PICKUP _____ LAT _____ LONG _____ IS EMT WITH THE PATIENT: YES _____ NO _____ AGE _____ SEX: MALE _____ FEMALE _____</p> <p><b>**Pre-determined rendezvous location for transfer from rescue helicopter to ground ambulance or air ambulance: SKY RANCH HELIBASE**</b></p> <p style="text-align: center;">N 40°29.49 W 122°22.27 7400 MARKET ST REDDING, 96003</p>
---	---

<b>7. Prepared by (Medical Unit Leader):</b> Name: JESSE WINNEN	Signature:
<b>8. Approved by (Safety Officer):</b> ANTHONY STORNETTA	Signature:

ICS 206	IAP Page _____	Date/Time: 08/01/2018 1800
---------	----------------	----------------------------







# STRUCTURE DEFENSE GUIDE

## STRUCTURE TRIAGE DECISION PROCESS (S-FACTS)

### SURVIVAL

- Initial Assessment: can you survive here? **If not, LEAVE NOW!**
- Is there a Safety Zone nearby? **If not, LEAVE NOW! (IRPG)**
- Do you have a viable Escape Route?
- What is the decision point at which you will leave based on fire behavior and rate of spread?
- Is there a Temporary Refuge Area (TRA) on site? **If not, LEAVE NOW!**
  - Preplanned area for immediate, temporary refuge
    - Use of fire shelter should not be necessary
  - Is there a viable Escape Route to the TRA or Safety Zone?
- Is "Prep and Go" tactic an option?
- Do you have communications with your supervisor and adjoining forces?
- If safety issues cannot be mitigated, **LEAVE NOW!**

### FIRE ENVIRONMENT

- Can you survive based on current and expected fire behavior? **If not, LEAVE NOW!**
- Look up, Look Down, Look Around Indicators:
  - Fuels (characteristics, moisture, temperature)
    - What will the intensity of the fire be when it arrives?
    - How long will it take to consume the fuels?
  - Wind
    - Current speed/direction
    - Expect changing winds
  - Terrain
    - Are you in a chute, chimney, or saddle? **If yes, LEAVE NOW!**
    - Is wind in alignment with topography?
    - What is your position relative to topography?
    - Are you mid slope or on top of a ridge?
  - Atmospheric Stability
  - Fire Behavior (requires constant monitoring)
    - Spotting, crowning, sheeting, rate of spread?
    - Flame length and height?
- Other weather considerations:
  - What is the current relative humidity?
    - Is there an expected change?
  - Are thunderstorms forecasted?

### ACCESS

- Is access compatible with time and distance factors necessary to utilize as an Escape Route to a Safety Zone?
  - Road surface adequate for speed necessary?
  - Adequate width?
  - Turnaround/turnouts?
  - Bridges within limits for fire apparatus?
  - Drainage ditches/culverts?
  - Steep grades?
  - Is there a safe place to spot apparatus?

# CONSTRUCTION/CLEARANCE

- Does the structure have adequate defensible space, based on topography, fuels, and current and expected fire behavior?
- Can defensible space problems be mitigated quickly?
- Will building materials and yard clutter compromise safety?
- Is the construction wood siding or shake shingle roof?
- Are there vent openings, open eaves, large glass windows facing fire front, decks with vegetation below?
  - Will ember intrusion through attic or foundation vents be a problem?
- What are the contents in the garage and outbuildings?
- Are there hazardous materials present?
- Are there propane tanks, fuel tanks, or power lines?
- Is there an adequate water supply nearby?
- Are additional resources needed to mitigate issues?
- Consider "Prep and Go" or "Prep and Defend" tactics

# TIME CONSTRAINTS

- Is there time for an adequate size up of the structure defense problem?
- Is there time to mitigate safety concerns?
- Is there time and adequate resources to properly prepare and defend the structure?
- Is there time to escape, utilizing Escape Routes, to a Safety Zone? **If not, LEAVE NOW!**

# STAY OR GO

- Tactical decision based on the S-FACTS
- Is it safe to stay? If no, utilize "Check and Go" tactic
- Is there time to prepare the structure for defense and what will the fire behavior be when the fire gets here?
- "Prep and Go" or "Fire Front Following" tactics should be used when it is not safe to "Prep and Defend"

## STRUCTURE TRIAGE CATEGORIES

### **Not-Threatened**

- Safety Zone nearby and TRA present at structure
- Construction features/defensible space make the structure unlikely to ignite
- Residents may/may not have evacuated

### **Threatened Defensible**

- Safety Zone nearby and TRA present at structure
- Construction features/defensible space require structure defense tactics during fire front impact
- Residents may/may not have evacuated

### **Threatened non-Defensible**

- Lack of adequate Safety Zone nearby
- Structure cannot be safely defended
- Residents must be evacuated

## ENTRAPMENT AVOIDANCE

- Are you adhering to the **10 Standard Firefighting Orders?** (IRPG)
- Have you considered the **18 Situations that Shout Watch Out?**
- Have you considered the **Common Denominators of Fire Behavior on Tragedy Fires?** (IRPG)
- Are you maintaining **LCES?** (IRPG)
- Look Up, Look Down, Look Around (IRPG)
- Have Decision Points ("Trigger Points") been established?
- Conduct Risk Management (IRPG)
  - Situational Awareness – Hazard Assessment – Hazard Control – Decision Point – Evaluate

# FIRING OPERATION CHECKLIST

Location: \_\_\_\_\_

Date: \_\_\_\_\_ Time: \_\_\_\_\_

Firing Supervisor \_\_\_\_\_

## 1. Personnel Briefing

- Objectives
- Conditions (fire environment)
- Resource assignments identified
  - Firing personnel
  - Holding forces
  - Lookouts
- Ignition plan/sequence
- Communication Plan
- Contingency Plan
- Safety issues

## 2. Go / No-Go

- All personnel briefed
- Weather forecast reviewed
- Resources in place
- Lookouts posted as needed
- Anchor and termination firing points identified
- Communications systems in place
- Fire behavior forecast reviewed
- Escape routes and safety zones established and made known
- Adjoining forces/Air Attack notified

## 3. Approval Prior To Firing

- Division Supervisor
- Branch Director
- Operations

## 4. Other Notifications

- Other: \_\_\_\_\_
- Other: \_\_\_\_\_

Attach Firing Operations Checklist to ICS-214



# CARR FIRE

CA-SHU-007808

## FINANCE MESSAGE

- Finance Section is located in Fusaro Building
  - Please come by the Time Unit and start your and update your FC-33
  - Vendors please drop off your agreements to the Time Unit
  - Shift Tickets need to be completed by line supervisor and turned in at the end of each shift.
  - All injuries need to be reported to the COMP / CLAIMS Unit
  - All property Damage must be reported and documented
  - Please report any Vehicle Damage this includes Rental Vehicles
  - Local Government please check in with OES
  - Federal Time: Timekeeper on site.
  - **OFF-SITE FEEDING IS NOT APPROVED**
  - Water usage report needs to be turned in daily to the COMP / CLAIMS Unit
- 
- **This fire is under Cost Apportionment**
    - **All DIVS, OPBD, STAM need to debrief with the Cost Apportionment Team Daily**
    - Cost Apportionment is located in the trailer directly across from Fusaro Hall

## **INCIDENT BILLING INFORMATION**

### **CAL FIRE – SHASTA / TRINITY UNIT**

875 CYPRESS AVE.  
Redding Ca. 96001

Index Code: 2400

E-fund Billing Code: 013860

Federal P Code <sub>-43-</sub> PL1A6 (1502) [P]





# SHIFT TICKET EXAMPLE

EMERGENCY SHIFT TICKET and EVALUATION FORM					Contractor Name <b>DOZER DUDE</b>						
Incident or Project Name <b>LILAC INC</b>		Incident Number <b>CAMVU024612</b>	Request Number <b>E#</b>		Operator #1 <b>BOB SMITH</b>	Operator #2 <b>TOM SMITH</b>					
Agreement Number <b>XXX - 000000 - 00</b>					Operator Furnished By: <input checked="" type="checkbox"/> Contractor <input type="checkbox"/> Government						
Equipment Make <b>CAT</b>		Equipment Model / Type <b>D6XM</b>			Operating Supplies Furnished By: <input checked="" type="checkbox"/> Contractor <input type="checkbox"/> Government						
Serial Number <b>FULL VIN#</b>		Licence Number <b>1234567</b>			Equipment Status <input checked="" type="checkbox"/> Inspected <input checked="" type="checkbox"/> Under Agreement						
Equipment Use (Circle) <b>Hours</b> Days / Miles					Released by Government Withdrawn by Contractor						
Date Mo / Day	Start	Stop	Work	Assignment							
12/8	0700	2400	17	DIV M							
12/9	0001	0700	7	DIV M							
Vendor Rating					Govt. Rep. Name and Position - PRINT <b>Mike Weber</b>						
<table border="1"> <tr> <td>Poor*</td> <td>Avg.</td> <td>Good</td> <td>Exc.</td> <td>N/A</td> </tr> </table>					Poor*	Avg.	Good	Exc.	N/A	Govt. Rep. Signature <i>Mike Weber</i>	
Poor*	Avg.	Good	Exc.	N/A							
Met Performance Expectations					Contractor Signature <i>Bob Smith</i>						
Equipment in Safe Working Condition					Date <b>08/04/15</b>						
Operator Skill Level					Time <b>0800</b>						
Operates Safely					Remarks/Comments ** <b>2 OPERATORS</b>						
Operator's Cooperation Level					Date <b>08/04/15</b>						
Overall Performance					Time <b>0800</b>						
<p>* NOTE: Any rating of POOR requires an explanation in Comment Section.</p> <p>**Final evaluation or for more documentation, use an ICS Form 230 or equivalent.</p>					CALFIRE 297 (Rev 3-2011)						
Pink - Finance		Blue - Home Unit HE Coordinator		Yellow - Vendor		White - Govt Representative					

EMERGENCY SHIFT TICKET and EVALUATION FORM					Contractor Name <b>DUDE TRANSPORT</b>						
The responsible Government Officer will complete this form each shift											
Incident or Project Name <b>LILAC INC</b>		Incident Number <b>CAMVU 024612</b>	Request Number <b>E #</b>		Operator #1 <b>BOB SMITH</b>	Operator #2 <b>TOM SMITH</b>					
Agreement Number <b>XXX - 000000 - 00</b>					Operator Furnished By: <input checked="" type="checkbox"/> Contractor <input type="checkbox"/> Government						
Equipment Make <b>TRANSPORT/ KENWORTH</b>		Equipment Model / Type <b>COZAD TRAILER /26 WHEELS</b>			Operating Supplies Furnished By: <input checked="" type="checkbox"/> Contractor <input type="checkbox"/> Government						
Serial Number <b>1XP3ESMP14239012</b>		Licence Number <b>9999999</b>			Equipment Status <input checked="" type="checkbox"/> Inspected <input checked="" type="checkbox"/> Under Agreement						
Equipment Use (Circle) <b>Hours</b> Days / Miles					Released by Government Withdrawn by Contractor						
Date Mo / Day	Start	Stop	Work	Assignment							
12/8	0700	2400	17	DIV M							
12/9	0001	0700	7	DIV M							
Vendor Rating					Govt. Rep. Name and Position - PRINT <b>Mike Weber</b>						
<table border="1"> <tr> <td>Poor*</td> <td>Avg.</td> <td>Good</td> <td>Exc.</td> <td>N/A</td> </tr> </table>					Poor*	Avg.	Good	Exc.	N/A	Govt. Rep. Signature <i>Mike Weber</i>	
Poor*	Avg.	Good	Exc.	N/A							
Met Performance Expectations					Contractor Signature <i>Bob Smith</i>						
Equipment in Safe Working Condition					Date <b>08/04/15</b>						
Operator Skill Level					Time <b>0800</b>						
Operates Safely					Remarks/Comments ** <b>2 OPERATORS</b>						
Operator's Cooperation Level					Date <b>08/04/15</b>						
Overall Performance					Time <b>0800</b>						
<p>* NOTE: Any rating of POOR requires an explanation in Comment Section.</p> <p>**Final evaluation or for more documentation, use an ICS Form 230 or equivalent.</p>					CALFIRE 297 (Rev 3-2011)						
Pink - Finance		Blue - Home Unit HE Coordinator		Yellow - Vendor		White - Govt Representative					

**Turn shift tickets into Finance.**



# SHIFT TICKET EXAMPLE

EMERGENCY SHIFT TICKET and EVALUATION FORM					Contractor Name	
Incident or Project Name <b>LILAC INC</b>			Incident Number <b>CAMVU024612</b>		Request Number <b>E#</b>	
Agreement Number <b>XXX - 000000 - 00</b>			Operator #1 <b>BOB SMITH</b>			
Equipment Make <b>CAT</b>			Operator #2 <b>TOM SMITH</b>			
Serial Number <b>FULL VIN#</b>			Equipment Model / Type <b>D6XM</b>			
Licence Number <b>1234567</b>			Operator Furnished By: <input checked="" type="checkbox"/> Contractor <input type="checkbox"/> Government			
Equipment Use			Operating Supplies Furnished By: <input checked="" type="checkbox"/> Contractor <input type="checkbox"/> Government			
Date			Equipment Status			
Mo / Day			Inspected <input checked="" type="checkbox"/> Released by Government <input type="checkbox"/> Under Agreement <input checked="" type="checkbox"/>			
Start			Withdrawn by Contractor <input type="checkbox"/>			
Stop			Remarks/Comments **			
Work			<b>2 OPERATORS</b>			
Assignment						
Days / Miles						
12/8 0700 2400 17			DIV M			
12/9 0001 0700 7			DIV M			
Vendor Rating			Govt. Rep. Name and Position - PRINT			
Poor* Avg. Good Exc. N/A			<b>Mike Weber</b>			
Met Performance Expectations			Govt. Rep. Signature			
Equipment in Safe Working Condition			<i>Mike Weber</i>			
Operator Skill Level			Contractor Signature			
Operates Safely			<i>Bob Smith</i>			
Operator's Cooperation Level			Date			
Overall Performance			Time			
			<b>08/04/15 0800</b>			
* NOTE: Any rating of POOR requires an explanation in Comment Section.						CALFIRE 297
**Final evaluation or for more documentation, use an ICS Form 230 or equivalent.						(Rev 3-2011)
Pink - Finance		Blue - Home Unit HE Coordinator		Yellow - Vendor		White - Govt Representative

EMERGENCY SHIFT TICKET and EVALUATION FORM					Contractor Name	
The responsible Government Officer will complete this form each shift						
Incident or Project Name <b>LILAC INC</b>			Incident Number <b>CAMVU 024612</b>		Request Number <b>E #</b>	
Agreement Number <b>XXX - 000000 - 00</b>			Operator #1 <b>BOB SMITH</b>			
Equipment Make <b>TRANSPORT/ KENWORTH</b>			Operator #2 <b>TOM SMITH</b>			
Serial Number <b>1XP3ESMP14239012</b>			Equipment Model / Type <b>COZAD TRAILER /26 WHEELS</b>			
Licence Number <b>9999999</b>			Operator Furnished By: <input checked="" type="checkbox"/> Contractor <input type="checkbox"/> Government			
Equipment Use			Operating Supplies Furnished By: <input checked="" type="checkbox"/> Contractor <input type="checkbox"/> Government			
Date			Equipment Status			
Mo / Day			Inspected <input checked="" type="checkbox"/> Released by Government <input type="checkbox"/> Under Agreement <input checked="" type="checkbox"/>			
Start			Withdrawn by Contractor <input type="checkbox"/>			
Stop			Remarks/Comments **			
Work			<b>2 OPERATORS</b>			
Assignment						
Days / Miles						
12/8 0700 2400 17			DIV M			
12/9 0001 0700 7			DIV M			
Vendor Rating			Govt. Rep. Name and Position - PRINT			
Poor* Avg. Good Exc. N/A			<b>Mike Weber</b>			
Met Performance Expectations			Govt. Rep. Signature			
Equipment in Safe Working Condition			<i>Mike Weber</i>			
Operator Skill Level			Contractor Signature			
Operates Safely			<i>Bob Smith</i>			
Operator's Cooperation Level			Date			
Overall Performance			Time			
			<b>08/04/15 0800</b>			
* NOTE: Any rating of POOR requires an explanation in Comment Section.						CALFIRE 297
**Final evaluation or for more documentation, use an ICS Form 230 or equivalent.						(Rev 3-2011)
Pink - Finance		Blue - Home Unit HE Coordinator		Yellow - Vendor		White - Govt Representative

**Turn shift tickets into Finance.**



# PUBLIC INFORMATION



Incident Information Line: (530) 225-2510

Incident Media Line: (530) 448-2466

STATUS	
Incident Start Date: 7/23/2018	Incident Start Time: 1:15 PM
Cause: Mechanical Failure of Vehicle	Acres:
Containment:	Total Personnel:

**MEDIA** – The California State Penal Code Section 409.5(d) allows the news media to enter scenes of disaster, riot or civil disturbance. Properly identified members of the news media should not be restricted from entering locations specified within the code. However, this does not include crime scenes, private property and does not imply that the news media may interfere with incident operations while they are in the areas of concern. More information can be found [here](#).



**CAL FIRE SOCIAL MEDIA POLICY** – When assigned to a CAL FIRE incident, you will adhere to the CAL FIRE Social Media Policy, Section 0691. You can find further information about the CAL FIRE Social Media Policy [here](#).



**PHOTOGRAPHS AND VIDEOS OF INCIDENT** – We are in a new era of media. Media no longer means news/broadcast industry, but now refers to anyone that has the capability to shoot video, photographs and post them onto social media sites in a matter of minutes. Unfortunately, we have seen some instances of photographs or videos that have depicted unsafe, unprofessional or embarrassing circumstances which are a serious breach of ethics. When this happens, it reflects poorly on all that are attached to this incident. Posting an inappropriate video, photo or blog comment could expose oneself to unwanted ramifications. It may be unsafe to shoot photos or video and a firefighter who is concentrating on a camera loses their situational awareness.

The Public Information Office would like copies of the video and pictures that you safely took while not in an emergency situation, fire suppression activity or in an overhead assignment. Bring your video and pictures to the Public Information trailer; they will be reviewed and possibly uploaded to our many CAL FIRE social media sites. Remember, we don't want photographs or videos that depict unsafe, unprofessional or embarrassing circumstances, which are a serious breach of ethics.

**LOST AND FOUND** – The Information Section will manage lost and found items for the incident. If you have lost an item please leave your contact information and what you have lost at the Information Section. If you have found an item on the incident, bring the item to the Information Section with your contact information as well.

**MAIL SERVICE** – The Information Section can assist you with sending and receiving mail. The address is Shasta District Fairgrounds 1890 Briggs St. Anderson CA. 96007

# DEMOBILIZATION INSTRUCTIONS CARR CA-SHU-007808

## DEMOB PROCEDURES

- CHECK THE DEMOB LIST EACH MORNING. YOU CAN FIND THE DEMOB LIST THROUGH THE "QR" CODE ON THE I.A.P. COVER OR ON LISTS POSTED THROUGHOUT CAMP. ONLY REPORT TO DEMOB AT YOUR SCHEDULED TIME. EARLY ADMITTANCE WILL NOT BE ALLOWED.
- REPORT TO DEMOB AT APPOINTMENT TIME TO RECEIVE A CHECKOUT FORM (ICS-221), THEN GO TO THE FOLLOWING UNITS TO OBTAIN THE NECESSARY SIGNATURES:
  - ✓ SUPPLY UNIT
  - ✓ COMMUNICATIONS UNIT
  - ✓ GROUND SUPPORT/VEHICLE INSPECTION\*\*\*
  - ✓ DOCUMENTATION UNIT
  - ✓ TIME UNIT
  - ✓ TRAINING UNIT (IF APPLICABLE)
  - ✓ ACCOMMODATIONS (IF APPLICABLE)

### \*\*\*VEHICLE INSPECTION:

- THE DEMOB UNIT WILL INFORM YOU IF THE VEHICLE NEEDS TO BE INSPECTED.
- YOU MUST HAVE THE ICS-221 DEMOB FORM WITH YOU AT VEHICLE INSPECTION.
- A VEHICLE INSPECTION TIME WILL BE PROVIDED WHEN YOU INITIALLY ARRIVE TO THE DEMOBILIZATION UNIT.
- DO NOT REPORT FOR VEHICLE INSPECTION PRIOR TO YOUR APPOINTMENT

HAVE YOUR EQUIPMENT INVENTORY CARD READY WHEN HEADING TO VEHICLE INSPECTION.

RETURN THE COMPLETED ICS-221 FORM TO THE DEMOB UNIT AND TRAVEL HOME SAFE!



-49-





# **Training Specialist Message**

**The following is a list of trainees that need to check into with the Training Specialist in Fusaro Hall next to check-in. Let us help you document your experience as a trainee.**

Order #	Name	Code
E-164.7	Means, Ryan	STEN
E-270.1	Cardosi, Steve	STEN
E-39.4	Grotting, Ben	HEQB
E-425.9	England, Thomas	STEN
E-428.7	Foley, Chris	STEN
E-438.1	Deurloo, Nate	STEN
E-636.2	Hubbell, Grant Roland	STEN
E-681.7	Murphy, Allison J	STEN
E-79.7	Woody, Jon	STEN
E-84.7	Tapia, Joe	STEN
Ⓞ-200049	Gregory, Michael L	HEQB
Ⓞ-200081	Carpenter, Dennis	HEQB
Ⓞ-286	Noyes, Colin J	FOBS
Ⓞ-365	Maccracken, Richard	FDUL
Ⓞ-388	Peters, Christine	INBA
Ⓞ-660	Welch, Anthony	HEQB
Ⓞ-721	Montoya, Mark D	BCMG
Ⓞ-769	Johnson, Richard B	OPBD
Ⓞ-782	Olascuaga, Marc A	HECM
Ⓞ-783	Tapia, Mario S	HECM
Ⓞ-90	Rogers, Dave	HEQB

**TNSP – Dave Randolph (805) 857-4820 / TNSP (T) Charlie Piccaro (310) 529-5844**

## Peer Support Team Message:

CARR INCIDENT PEER SUPPORT: (916) 591-9004

The gravity of this event is large. Many of us have been impacted by the events that have occurred as well as past incidents.

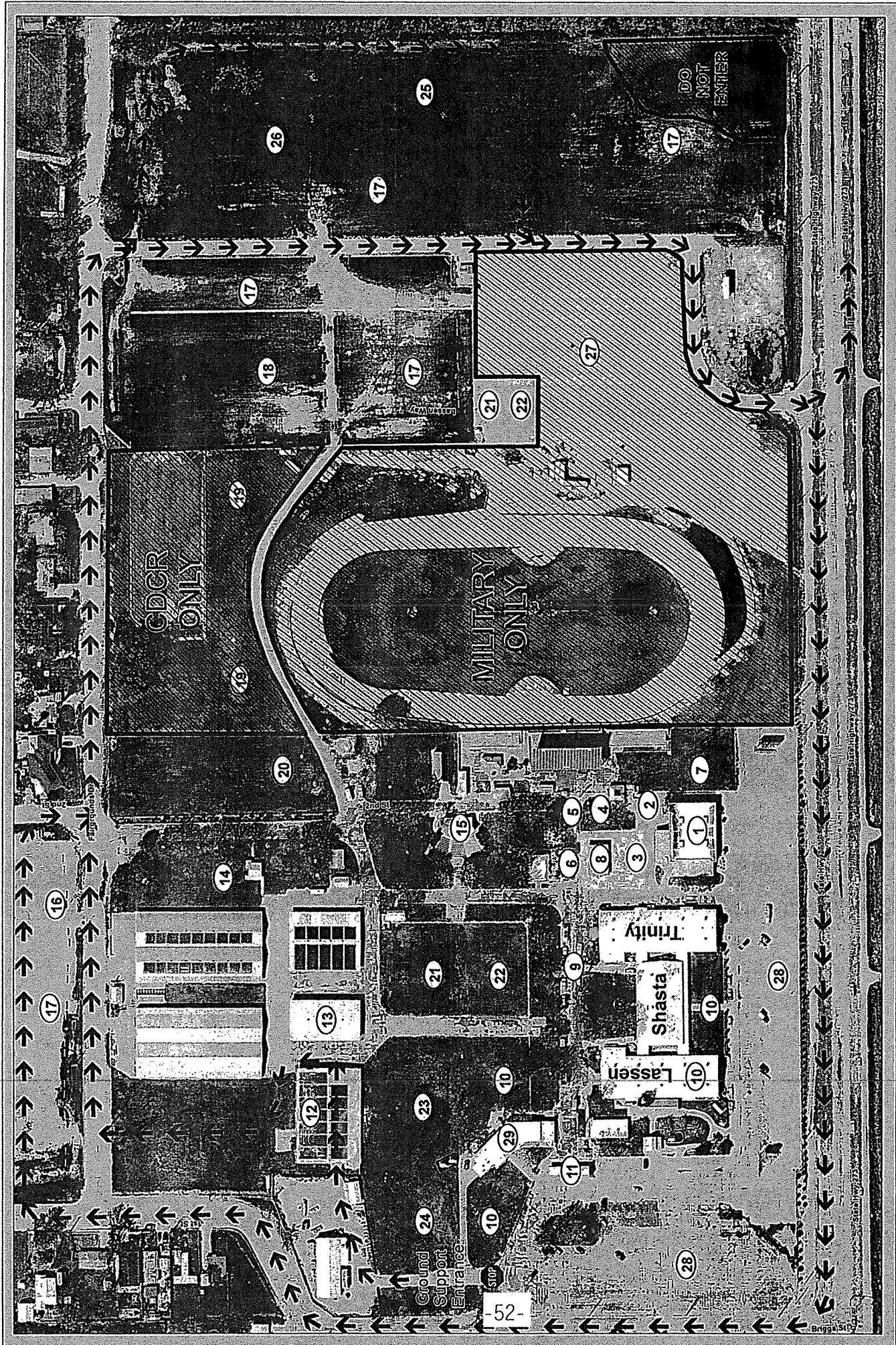
A peer support team has been assembled and Peers are available at the ICP. The Peer Support contact number is (916)-591-9004, which is available 24/7.

Some of the signs and symptoms you may be experiencing include, but are not limited to:

Irritability, lack of sleep, quick to anger, withdrawal, above average tobacco use, an increase in negative coping mechanisms such as excessive alcohol and/or substance abuse. You might experience lack of appetite, isolate yourself, and various other unexplained responses to normal every day events.

You may not be experiencing these symptoms now or during this fire incident. However, you may find yourself experiencing them when you return to your home or unit. You may find yourself being triggered by a past event that has impacted you, while assigned to future incidents. A sight, sound, smell, or touch could trigger a memory that previously existed, but you may not have been aware of.

If you find yourself in this situation and need to talk to someone contact your Employee Assistance Program (EAP). EAP programs are here to help. It is important to be able to talk to someone and get stuff off your chest vs carrying this around for your career.



NAD 1983 2011 California Teak Albers

# Facilities Map CARR INCIDENT CA-SHU-7808

- 1. Check-In/Finance
  - 2. Logistics Facilities
  - 3. Communications
  - 4. Safety/OPS
  - 5. Liason
  - 6. IC
  - 7. GIS
  - 8. Accommodations
  - 9. OES
  - 10. Crew Sleeping
  - 11. PIO
  - 12. Ground Support
  - 13. Supply
  - 14. Kitchen
  - 15. Briefing
  - 16. Lunches/Water/Ice
  - 17. Engine Parking
  - 18. CDCR Parking
  - 19. CDCR
  - 20. MERT
  - 21. Laundry
  - 22. Showers
  - 23. Mobile Sleepers
  - 24. CCC Sleeping
  - 25. Fuel
  - 26. Transport Parking
  - 27. CNG
  - 28. Overhead Parking
  - 29. Rehab Lounges
- \*Laundry/Showers Available to All.


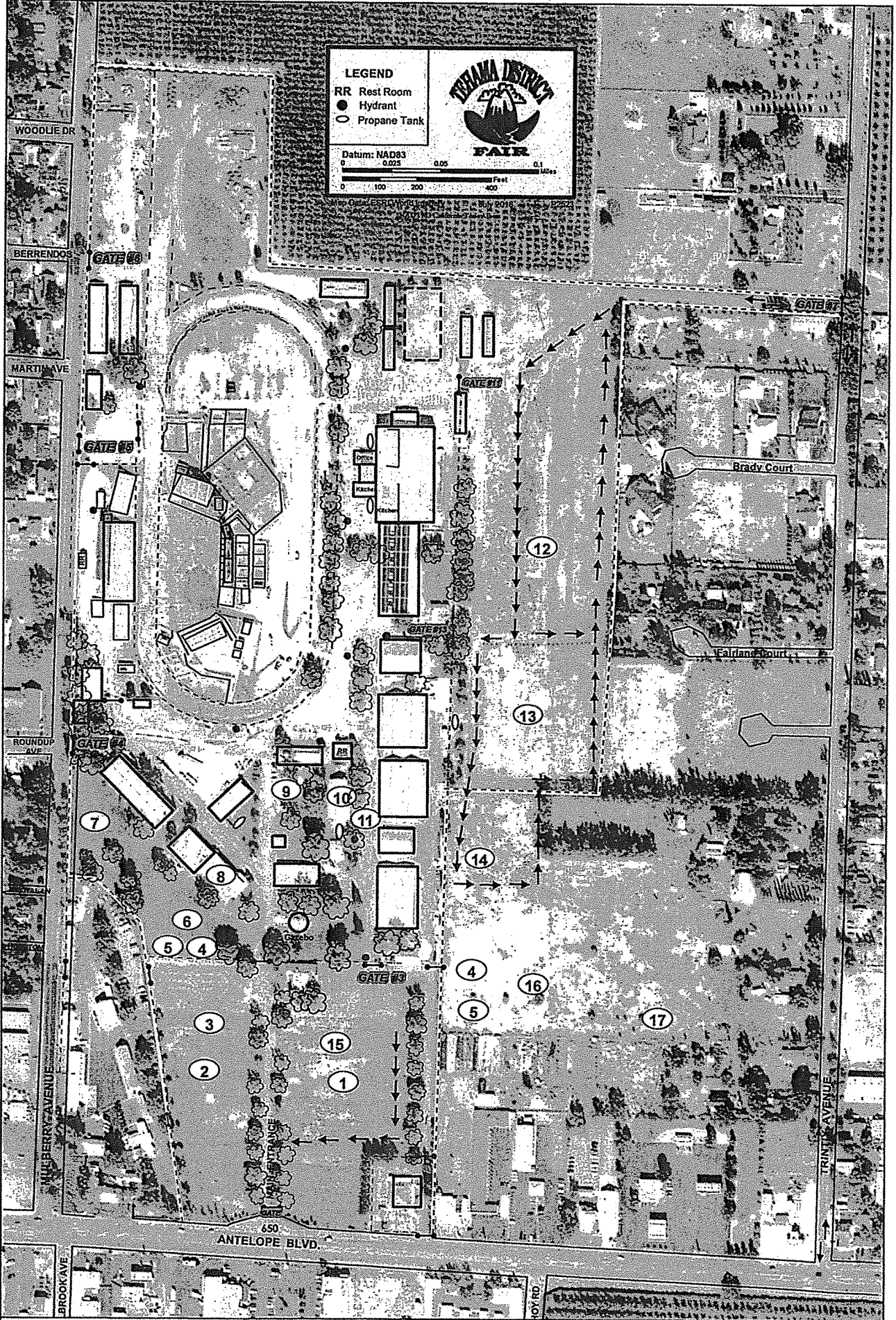


**LEGEND**

- RR Rest Room
- Hydrant
- Propane Tank

Datum: NAD83  
0 0.025 0.05 0.1 Miles

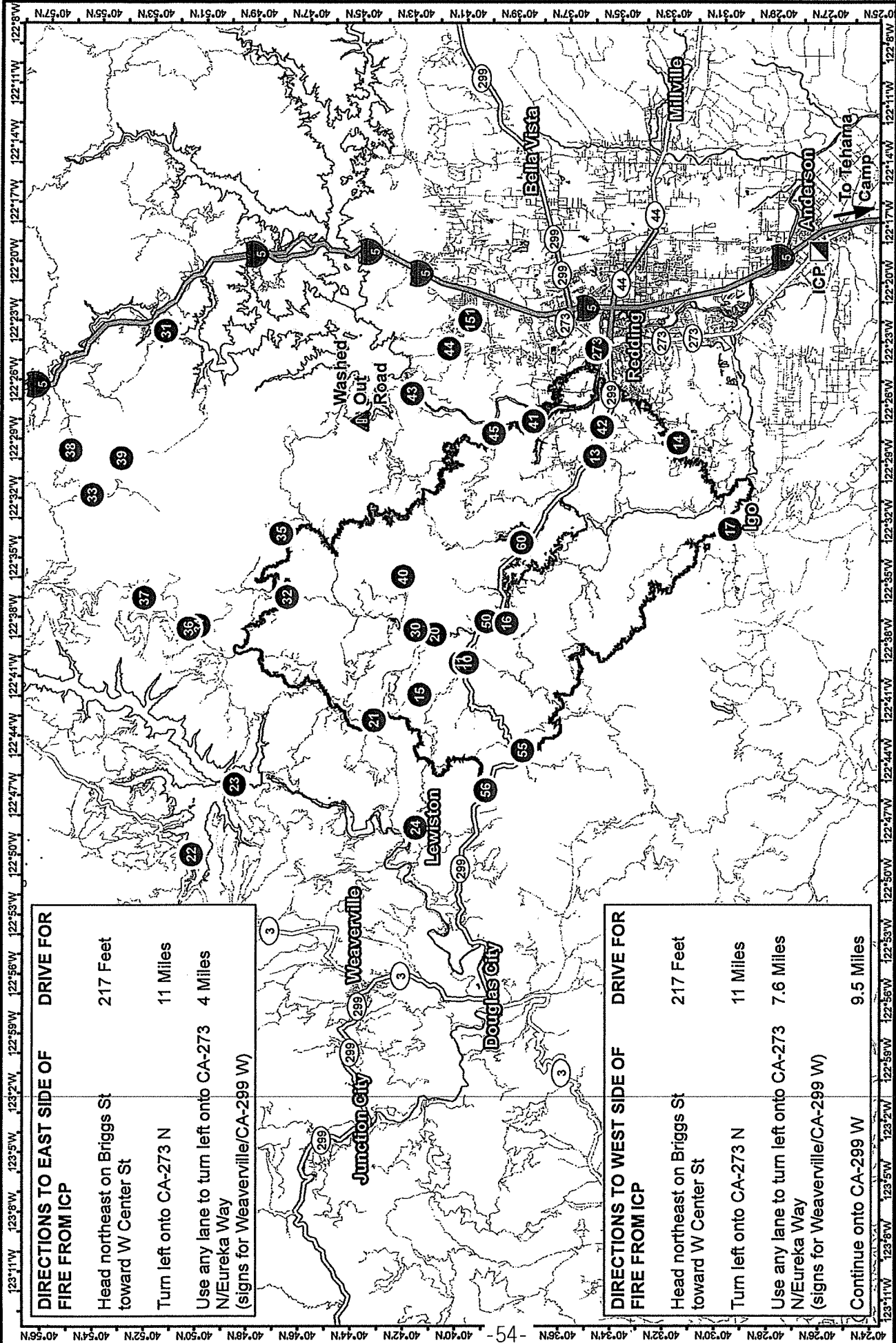
0 100 200 400 Feet

- |                            |                         |                                   |
|----------------------------|-------------------------|-----------------------------------|
| 1. Engine Fuel             | 7. Personnel Tents      | 13. National Guard Parking        |
| 2. Engine Overhead Parking | 8. LOGS                 | 14. Kitchen                       |
| 3. Ice/Water/Lunches       | 9. Food                 | 15. Engine Parking                |
| 4. Laundry                 | 10. Supply              | 16. Tents                         |
| 5. Showers                 | 11. Medical             | 17. Smaller Trailers              |
| 6. Tent W/AC Sleeping      | 12. National Guard Fuel | *Laundry/Showers Available to All |

**Facilities Map**  
**CA-53-ICIDENT**  
**CA-SHU-7808**





**DIRECTIONS TO EAST SIDE OF FIRE FROM ICP**

**DRIVE FOR**

Head northeast on Briggs St toward W Center St 217 Feet

Turn left onto CA-273 N 11 Miles

Use any lane to turn left onto CA-273 N/Eureka Way (signs for Weaverville/CA-299 W) 4 Miles

**DIRECTIONS TO WEST SIDE OF FIRE FROM ICP**

**DRIVE FOR**

Head northeast on Briggs St toward W Center St 217 Feet

Turn left onto CA-273 N 11 Miles

Use any lane to turn left onto CA-273 N/Eureka Way (signs for Weaverville/CA-299 W) 7.6 Miles

Continue onto CA-299 W 9.5 Miles

**Wildfire Daily Fire Incident Command Post**

Wildfire Daily Fire Incident Command Post

Perimeter

Drop Point

NAD83 1:350,000

**Transportation Map**

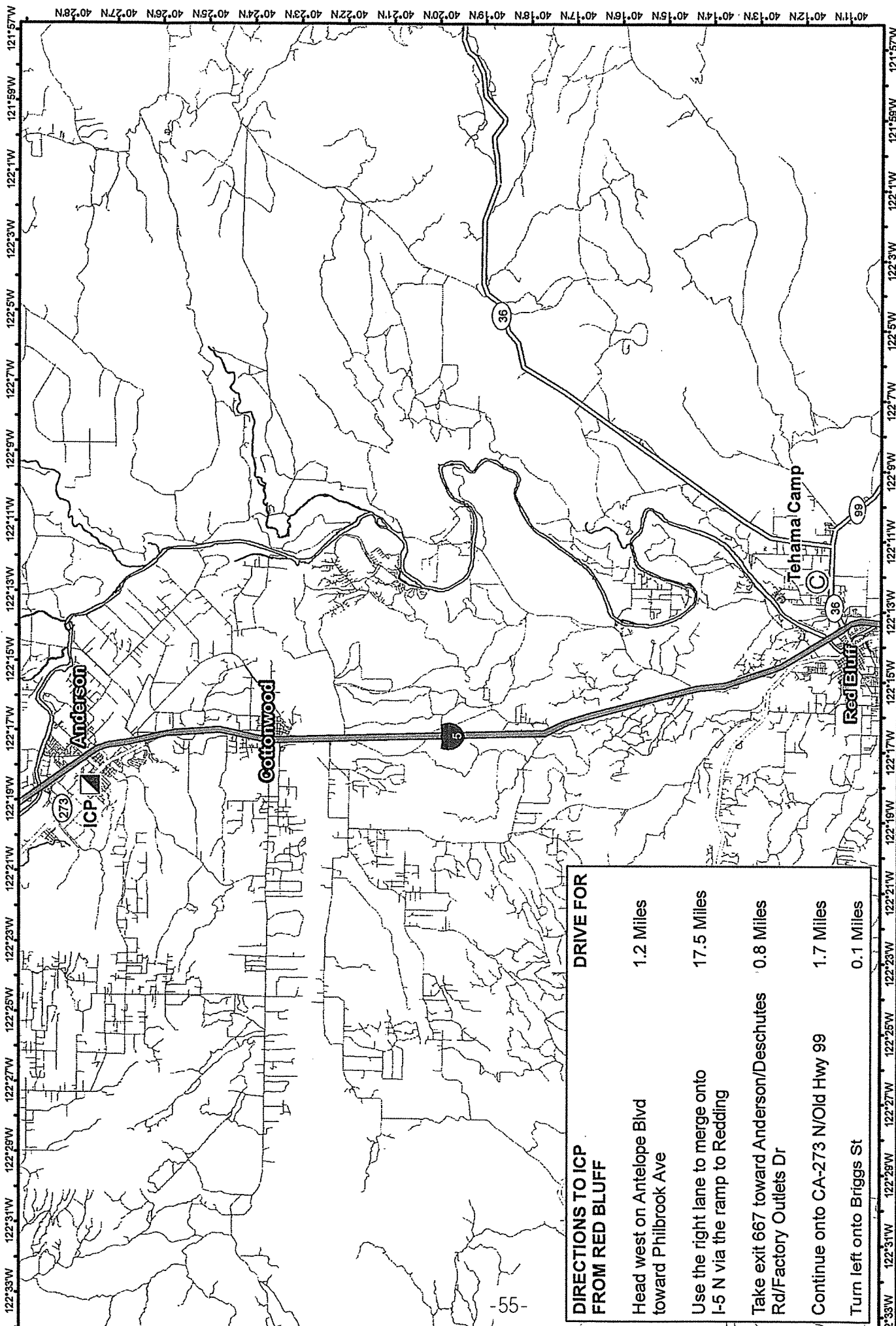
**Carr Fire**

CA-SHU-007808

0 5 10 Miles

Aug 02, 2018





DIRECTIONS TO ICP FROM RED BLUFF	
Head west on Antelope Blvd toward Philbrook Ave	1.2 Miles
Use the right lane to merge onto I-5 N via the ramp to Redding	17.5 Miles
Take exit 667 toward Anderson/Deschutes Rd/Factory Outlets Dr	0.8 Miles
Continue onto CA-273 N/Old Hwy 99	1.7 Miles
Turn left onto Briggs St	0.1 Miles

**Transportation Map**  
**Tehama Camp to ICP**  
650 Antelope Blvd. Red Bluff CA, 96080

Cart Fire  
CA-SHU-007608  
TRANSPORTATION  
MAP

0 1 2 Miles

NAD83 1:200,000

● Camp  
⊙ Incident Command Post  
● Drop Point



# CARR INCIDENT



## SERVICES SCHEDULE

MKU: Breakfast:	0500-1000
Dinner:	1700-2200
Sack Lunch Distribution:	0500-2100
Laundry Service:	0500-2300
Supply:	0600-2200
Saw Shop:	0600-2200
Showers:	0600-2300
Fuel:	24hr Service

---



