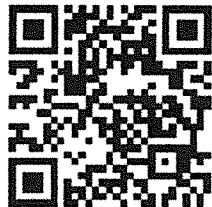


Carr

INCIDENT

#CA-SHU-007808

INCIDENT ACTION PLAN



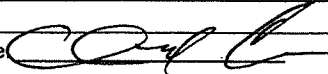
OPERATIONAL PERIOD

8/13/2018

to

8/14/2018

ORGANIZATION ASSIGNMENT LIST (ICS 203)

1. Incident Name: Carr		2. Operational Period: Date From: 8/13/2018 Time From: 0700		Date To: 8/14/2018 Time To: 0700	
3. Incident Commander(s) and Command Staff:			7. Operation Section:		
IC/UC's	B.Gouvea/ T.Pechota/ G. Bertelli (T)		Chief	T. Brownell/ A. McBath (T) Day	
Deputy	M. Van Loben Sels/ S.Spinharney (T)		Deputy	S. Crawford/ M. Wink (T)	
Safety Officer	B. Carter/ A. Stornetta (T)		Night Ops	F. Berbena	
Information Officer	E. Smith/ B. Mercado (T)				
	J. Clingsmith (T)		Branch	I	E. Darnall/ D. Davis (T)
Liaison Officer	D.Schloss/ T.Crawford/ C. Dugger/		Division/Group	T/U/V/X	R. Valles
	D. Pender/ B.Smith (T)		Division/Group	Y	J. Keown
4. Agency/Organization Representatives:			Branch	II	E. Darnall/ D. Davis (T)
Trinity County SO	M.Mandolfo		Division/Group	A	J. Edson (9210C)
Sierra Pacific Industries	N.Kroncki		Division/Group	B/C	J. Peter
Shasta County SO	A.Bertain		Division/Group		
County Roads Dept.	(530) 225-5661		Branch	III	B. Noel
Cal OES AREP	P.Titus/ D. Franklin		Division/Group	D/F	M. Wallen (9230C)
PG&E	M. Weaver		Division/Group	H/I	D. Boic/ C. Reginatto
CDCR	M.Ahlin		Division/Group	M	D. Boic
CCC	K. McDonald/ S. Borowski		Division/Group		
State Parks	A. Wright		Branch	IV	M. Fields
CHP	S. Fredrick		Division/Group	N	C. Martinelli/ J. Hannan (T)
Red Cross	R. Yoder		Division/Group	O	D. Bakken
WAPA	B. Adams		Division/Group	Contingency	P. Bell (12Hr)
BLM	M. Thompson		Branch	V	A. Latta (T)
NPS	B. Love		Division/Group	P/S	K. McDonald
5. Planning Section:			Division/Group		
Chief	M. Petro		Branch	Supp Repair	B. Rowe (12Hr)
Deputy	C. Carrera		Division/Group	Redding Group	M. Rosan (12Hr)
Resource Unit	Carlos/Corey/Reneau/Weber(T)/Elward(T)		Division/Group	Lakehead Group	J. Mcelroy (12Hr)
Situation Unit	E. Scovel / R. DeCamp		Division/Group	Shasta Group	S. Larsen (12Hr)
Documentation Unit	J.Patterson		Division/Group	Trinity Group	J. Mcelroy (12Hr)
Demobilization Unit	T. Shevenell/ A. Klem		Division/Group	Ono Group	D. Meese (12 Hr)
GISS	T. Werle/ E. Tumbleson (T)/ K. Towers		Division/Group	Baer Group	C. Holbeck (12Hr)
FBAN	D.Boursier		Division/Group		
IMET	R. Walbrun/ S. Nelaimischkies (T)		Branch		
Training Tech Spec	D. Randolph		Staging Area	Anderson	S.Bidwell (T)
Hired Equipment Tech	D. Grandbois		Staging Area	Lakehead	J. Price (T)
6. Logistics Section			Air Operations Branch		Director: T. Stepanovich
Chief	J.R.Morris		Air Support Grp Sup		M.Hill/ T. Smith (T)
Deputy	C. White		Helibase Manager		P. York
Supply Unit	M. Brabo (T)				
Facilities Unit	J. Guerra/ B. Little (T)		8. Finance/Administration Section:		
Ground Support Unit	J. Wilson		Chief	J. Franklin	
Communications Unit	T. Webb		Deputy	B. Counts	
Medical Unit	J. Winnen		Time Unit	S.Thompson	
Motel Tech Spec	S. Vaquero		Procurement Unit	C. Craig/ T. Meyers	
Ordering Manager	A. Gettman/ J. Tompkins		Comp/Claims Unit	M. Boone	
Food Unit	M. Mondragon		Cost Unit	S. Cain	
Prepared By: Name:	Chris Carrera	Position/Title:	PSC	Signature:	
ICS 203		Date/Time:	8/12/2018 2216 hrs		



Fire Weather Forecast

Sven Nelaimischkies

FORECAST NO: 18
PREDICTION FOR: DAY/NIGHT SHIFT
SHIFT DATE: August 13, 2018
TIME/DATE ISSUED: August 12, 2018 2000 PDT

NAME OF FIRE: Carr
UNIT: CA-SHU
SIGNED: Sven Nelaimischkies
Incident Meteorologist (t)

WEATHER DISCUSSION:

Smoke will slowly become a inhibiting factor day by day as normal diurnal wind pattern remains. Through the week normal weak afternoon into evening southerly upslope winds will transition overnight into the mornings to northerly down slope/down river drainage flow. The strongest northerly overnight/morning flows will be down the Shasta river into Shasta Lake.

WEATHER FORECAST FOR MONDAY:

WEATHER: Smoke and Haze. Continued warm and dry. South winds increasing after 1500 hours.

MAX TEMPERATURES: 89-97°F (32-36°C). (Nuetral trend.)

MIN HUMIDITY: 14-22%. (Nuetral trend.)

20-FOOT WIND:

VALLEY - Downslope/downvalley 2-5mph (3-8 km/h) early becoming upslope/upvalley 2-4 mph with gusts to 8 mph (3-6 km/h gust 13 km/h) after 1200.

MIDSLOPES/RIDGETOP- North winds 3-6 gust 8 mph (5-10 gust 13 km/h) before 1100
Becoming south to 3-7 gust 11 mph (5-19 gust 20km/h) after 1400.

HAINES INDEX: 4 INVERSION: Weak to moderate inversion breaking after 1300

MONDAY NIGHT:

WEATHER: Increasing smoke otherwise clear with moderate RH recovery.

MIN TEMPERATURES: 57-67°F (14-19°C). (Nuetral Trend)

MAX HUMIDITY: 40-60% (Nuetral Trend)

20-FOOT WIND:

SLOPE/VALLEY - Downslope/downvalley 2-5 mph (3-8 km/h) after 2200.

RIDGETOP - North 2-4 mph.

EXTENDED FORECAST:

TUESDAY THROUGH FRIDAY: Mostly sunny. Haze and smoke. Max temps...89-97°F (31-36°C). Min RH 12-22%. Diurnal terrain driven winds for midslopes and valleys. South winds during the afternoons with night time north/northwest drainage winds remaining fairly light, and slightly stronger in the Shasta river/Lake Shasta drainage. Haines indices will be stable as well with a more stable upper pattern over the region, becoming more unstable towards mid week.

SAFETY THOUGHT: Increased down river flow onto Shasta Lake will cause variable winds late nights into the mornings, especially on Div P by the lake. Increasing smoke in the lighter diurnal winds will decrease visibility into the week.

FIRE BEHAVIOR FORECAST

FORECAST NUMBER: 19	TYPE OF FIRE: Wildland Fire
FIRE NAME: CARR	OPERATIONAL PERIOD: 24hr 8/13 (0700-0700)
DATE ISSUED: 08/12	TIME ISSUED: 2100
UNIT: SHU	SIGNED: D. Boursier FBAN/LTAN

INPUTS

WEATHER SUMMARY

****Hot and Dry with light and variable winds****
See Weather Forecast in IAP.

OUTPUTS

GENERAL: Transition to fuels and topography driven activity.

Hazards throughout the fire area include: interior green islands and slopes, ash pits, fire weakened trees, dust devils, and roll-out.

New starts will see rapid growth and establishment. Smoke columns will contribute to long range spotting.

In the absence of weather conditions outside the forecast or extreme fire behavior conditions expect:

	Max. Flame Length	Max. Rate of Spread	Spotting	Probability of Ignition
Grass	< 5' (1.5m)	40 ch/hr (1.2 km/hr)	< ½ mile (.8 km)	89%
Grass/Shrub Mix	< 5' (1.5m)	20 ch/hr (.6 km/hr)	< ½ mile (.8 km)	89%
Timber Understory	< 8' (2.5m)	10 ch/hr (.2 km/hr)	< ¾ mile (1.2 km)	89%
Timber Litter	< 3' (1m)	5 ch/hr (.1 km/hr)	< ¼ mile (.4 km)	89%

****minimum safety zone size for brush fuels is ¾ acre (.3 Ha) for a Strike Team of Engines.**

SPECIFIC:

Branch I, II & III

Creeping, backing, and smoldering. Dormant heat areas may flare with air movement. Interior islands and green slopes with Southwest wind exposure alignment may see activity. Torching and short crown runs may occur with preheating or steeper terrain. Expect most activity to occur as afternoon winds increase. Roll-out and spotting potential across established lines. Keep alert to unburned islands, fire weakened trees, ash pits, and dust devils.

Branch IV and V

Predominately surface fire spread. Expect areas with understory preheating via slash piles, fuel jackpots or topography to transition into canopy. Interior Torching and short crown runs possible. Smoke shading may temper fire behavior. Look for areas of fuels treatment, timber harvest or previous fire activity for safety or control objectives. Roll-out and spotting potential across established lines. Anticipate areas above drainages to be susceptible spotting areas.

AIR OPERATIONS:

I-5 Corridor should remain smoked in for majority of burn period (Div. O and P).
Mixing height: 9,000 ft. AGL, Transport winds: SW 10-15 mph, Sunrise 0618, Sunset 2013.

SAFETY

Be aware of not only the "Fire Environment" you are currently in but also the one you are transitioning into.

SAFETY MESSAGE/PLAN (ICS 208)

INCIDENT NAME: CARR FIRE CA-SHU-007808	Operational Period: Date From: 8/13/18 Date to: 8/14/18 Time From: 0700 Time to: 0700
---	--

What you do has a greater impact than what you say. Don't just speak safe, **BE SAFE.**

MAJOR HAZARDS AND RISKS

Hazard Trees/SNAGS

Indicators: ● Burning for multiple days. ● Trees with rot and shallow root systems. ● Dead or broken tops and limbs overhead. ● Accumulation of down limbs. ● Absence of needles, bark or limbs. ● Leaning or hung-up trees. ● Water or retardant drops in the area have broken or weakened limbs in the canopy.

Mitigations: ● Eliminate hazards with qualified sawyers or heavy equipment. ● Secure the area with hazard flagging. ● Communicate hazards to others. ● Avoid the area when possible.

Driving

Indicators: ● Speeding, complacency, fatigue. ● Steep, narrow, and dusty roads. ● Increased traffic.

Mitigations: ● Drive defensively!!! ● Water dusty roads throughout fire area. ● Use appropriate speeds. ● Develop traffic plans. ● Communicate on tactical channels when driving on one lane roads.

Fatigue/Complacency

Indicators: ● Drowsiness, confusion. ● Feeling overly confident. ● Feeling of routine and stagnant.

Mitigations: ● Stay alert and engaged to maintain situational awareness. ● Continuously learn and adapt to new challenges. ● Be alert for signs of fatigue and take breaks as necessary.

Dehydration/Nutrition

Indicators: ● Feeling irritable, headache, confusion, dizziness and/or faint. ● Feeling very thirsty or hungry.

Mitigations: ● Drink plenty of fluids throughout the day. ● Balance electrolyte drinks at a 3:1 water to sport drink ratio. ● Address dehydration concerns immediately upon symptom onset. ● After strenuous work, continue drinking to replace fluid losses. ● Eat when appropriate. ● Pack food with you if you will be away from your equipment for extended durations.

Communications

Indicators: ● Not being heard or understood.

Mitigations: ● Ensure all messages are received and understood. ● There are firefighters from all over the country and world assisting, use proper terminology and give more details when needed. ● Only use assigned channels.

Stump Holes/Ash Pits

Indicators: ● Hole in ground where a tree or other vegetation burned away.

Mitigations: ● Can cause serious burns and injuries. ● Wear all PPE. ● Flag hazardous areas and communicate. ● Watch for stumps that have been smoldering for multiple days.

Prepared By: Baraka Carter Position/Title: SOF1

Signature: 

ICS 208

IAP Page

Date/Time: 8/12/18 -5- hrs.

LINE EMERGENCY REPORTING PROCEDURES

- Declare a "LINE EMERGENCY" on the COMMAND CHANNEL.
- Identify:
 - TYPE _____
 - SEVERITY _____
 - POINT OF CONTACT _____
- Identify resource needs, i.e., ambulance, hoist, REMS, Law Enforcement, etc.
- Provide COMMUNITIONS the following information:
 - CHIEF COMPLAINT: _____
 - LOCATION OF PATIENT: _____
 - TRANSPORTATION REQUEST BY: AIR _____ GROUND _____
 - DIVISION _____ CREW _____
 - POINT OF PICKUP _____
 - LAT _____ LONG _____
 - IS EMT WITH THE PATIENT: YES _____ NO _____
 - AGE _____
 - SEX: MALE _____ FEMALE _____

****ALL EMERGENCIES: Secure the area and identify witnesses for later investigation. Keep an accurate log of events****

Carr T/F Assignments

Carr #20

O-808
O-928
O-200160
E-226
E-440
E-441
E-524
E-811

Carr #21

O-820
O-823
O-200161
E-231
E-454
E-480
E-482
E-810
E-991

Carr #22

O-200157
O-200158
E-239
E-459
E-468
E-556
E-563

Carr #23

O-582
O-200155
E-319
E-442
E-478
E-481
E-812
E-817

Carr #24

O-589
O-200163
E-450
E-453
E-471
E-569

Carr #25

O-583
O-200159
E-227
E-230
E-237
E-238
E-474
E-568

Carr #26

O-586
O-200156
E-451
E-452
E-808
E-818

*Resources Unit will contact each TFLD regarding their engine's last working day.

ASSIGNMENT LIST (ICS 204)

1. Incident Name: <p style="text-align: center;">Carr</p>	2. Operational Period: Date From: 08/13/18 Date To: 08/14/18 Time From: 0700 Time To: 0700	3. Branch: I Div/Group: Y <p style="text-align: right;">Yankee</p>
4. Operations Personnel: Operations Section Chief: T. Brownell/ A. McBath (T) Day Night Ops: F. Berbena Branch Director: E. Darnall/ D. Davis (T) Branch Safety: R. Fisher Division/Group Supervisor: J. Keown		

5. Resources Assigned:		** Resources Below in Bold are 12 Hour **			Reporting Location, Special Equipment, Remarks, Notes, and Information	
Resource Identifier	ALS	Leader	Personnel	Request #	Time	Location
STC LNU 9146C		Heyfron, Mike	16	E-1155	0700-0700	DP 17
STC NEU 9231C		Skehan, Brian	17	E-211	0700-0700	DP 17
ENG T/F 1870		Cooke, Nathan	22	E-602	0700-0700	DP 17
T/F TX TF 4		Brinkkoeter, Darren	18	E-1226	0700-0700	DP 17
DOZ PVT E-54		Edwards, Rob	2	E-54	0700-0700	DP 17
DOZ PVT E-347		Thompson, Torin	2	E-347	0700-0700	DP 17
DOZ PVT E-401		Jones, Robert	2	E-401	0700-0700	DP 17
DOZ PVT E-407		Ingram, Brad	3	E-407	0700-0700	DP 17
DOZ PVT E-408		Thurman, Brian	2	E-408	0700-0700	DP 17
DOZ PVT E-419		Waterman, Tim	3	E-419	0700-0700	DP 17
W/T PVT E-124		Presidio, Linn	2	E-124	0700-0700	DP 17
W/T PVT E-206		Holden, Jesse	2	E-206	0700-0700	DP 17
W/T PVT E-399		Hubbard, Warren	2	E-399	0700-0700	DP 17
W/T PVT E-893		Vargas, Richie	2	E-893	0700-0700	DP 17
W/T PVT E-1110		Crownover, Wes	1	E-1110	0700-1900	DP 17
HEQB DAVI O-15		Davi, Jason	1	O-15	0700-0700	DP 17
HEQB (T) GOLDIE O-519		Goldie, Nathan	1	O-519	0700-0700	DP 17

6. Work Assignments:
 Construct control lines as direct as possible.
 Fall hazard trees, and trees that will threaten control lines.
 Mop up 300 feet or 100%.
 Backhaul garbage, hose, and water.

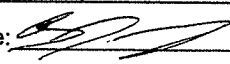
7. Special Instructions:
 Identify for backhaul any unneeded hose and equipment in the fire perimeter.

8. Communications (radio and/or phone contact numbers needed for this assignment):

Name	Ch	Function	Rx Freq	Rx Tone	Tx Freq	Tx Tone	Notes
SHA CMD	1	COMMAND	154.4300	136.5	159.0150	123.0 (T2)	(T2) BASS MTN
VFIRE 25	9	TACTICAL	154.2875	156.7 (T6)	154.2875	156.7 (T6)	
CALCORD	15	MEDICAL	156.0750	156.7 (T6)	156.0750	156.7 (T6)	MEDICAL
A-G CDF T17	6	A-G	159.3150	192.8	159.3150	192.8	A-G CDF TAC 17
GUARD	16	EMERGENCY	168.6250	0	168.6250	110.9	EMERGENCY USE ONLY

9. Prepared by: Name: B.J. Corey Pos/Title: RESL Signature:
ICS 204 Date/Time: 8/12/2018 2216 hrs

ASSIGNMENT LIST (ICS 204)

1. Incident Name: Carr		2. Operational Period: Date From: 08/13/18 Date To: 08/14/18 Time From: 0700 Time To: 0700				3. Branch: II Div/Group: B/C Bravo	
4. Operations Personnel: Operations Section Chief: T. Brownell/ A. McBath (T) Day Night Ops: F. Berbena Branch Director: E. Darnall/ D. Davis (T) Branch Safety: N. Nava / E. D'amico (12 HR) Division/Group Supervisor: J. Peter							
5. Resources Assigned:		** Resources Below in Bold are 12 Hour **				Reporting Location, Special Equipment, Remarks, Notes, and Information Time Location	
Resource Identifier	ALS	Leader	Personnel	Request #			
STC SKU 9260C		Stone, Jason	17	E-17	0700-0700	DP 18	
T/F TX 2		Denzer, Randy	16	E-1224	0700-0700	DP 18	
T/F CARR #22		R.Reid/T.Grant	18		0700-1900	DP 18	
DOZ PVT E-199		Salinas, Tony	4	E-199	0700-0700	DP 18	
DOZ PVT E-201		Cummings, Terry	2	E-201	0700-0700	DP 18	
DOZ PVT E-739		Jensen, Devin	2	E-739	0700-0700	DP 18	
W/T PVT E-136		Torres, Bill	2	E-136	0700-0700	DP 18	
W/T PVT E-207		Strother, Thomas	2	E-207	0700-0700	DP 18	
W/T PVT E-353		Douglas, Jason	2	E-353	0700-0700	DP 18	
W/T PVT E-391		Hasanbasic, Dino	2	E-391	0700-0700	DP 18	
W/T PVT E-392		Funes, Anthony	2	E-392	0700-0700	DP 18	
W/T PVT E-394		Troedel, Bryan	2	E-394	0700-0700	DP 18	
W/T PVT E-396		Dee Holmes	2	E-396	0700-0700	DP 18	
W/T PVT E-1115		Clark, Steve	2	E-1115	0700-0700	DP 18	
W/T PVT E-1187		Kandarian, Mike	2	E-1187	0700-0700	DP 18	
GRD PVT E-1248		Murphy, Joe	1	E-1248	0700-0700	DP 18	
FALM O-666		Mendoza, Read	2	O-666	0700-1900	DP 18	
HEQB DAY O-657		Day, Thorin	1	O-657	0700-0700	DP 18	
FEMP DALEY O-203	ALS	Daley, John	1	O-203	0700-0700	DP 18	
FEMT RUSTICE O-211		Rustice, James	1	O-211	0700-0700	DP 18	
6. Work Assignments: Fall hazard trees, and trees that will threaten control lines. Hold fire in planned lines. Improve and hold control lines. Mop up 300 feet or 100%. Backhaul garbage, hose, and water.							
7. Special Instructions: Identify for backhaul any unneeded hose and equipment in the fire perimeter.							
8. Communications (radio and/or phone contact numbers needed for this assignment):							
Name	Ch	Function	Rx Freq	Rx Tone	Tx Freq	Tx Tone	Notes
SHA CMD	1	COMMAND	154.4300	136.5	159.0150	123.0 (T2)	(T2) BASS MTN
CDF T30	11	TACTICAL	151.3925	192.8 (T16)	151.3925	192.8 (T16)	
CALCORD	15	MEDICAL	156.0750	156.7 (T6)	156.0750	156.7 (T6)	MEDICAL
A-G CDF T17	6	A-G	159.3150	192.8	159.3150	192.8	A-G CDF TAC 17
GUARD	16	EMERGENCY	168.6250	0	168.6250	110.9	EMERGENCY USE ONLY
9. Prepared by: Name: B.J. Corey		Pos/Title: RESL		Signature: 			
ICS 204		Date/Time: 8/12/2018 2216 hrs					

ASSIGNMENT LIST (ICS 204)

1. Incident Name: Carr		2. Operational Period: Date From: 08/13/18 Date To: 08/14/18 Time From: 0700 Time To: 0700				3. Branch: III Div/Group: D/F Delta	
4. Operations Personnel: Operations Section Chief: T. Brownell/ A. McBath (T) Day Night Ops: F. Berbena Branch Director: B. Noel Branch Safety: N. Martino / R. Booker (12 HR) Division/Group Supervisor: M. Wallen (9230C)							
5. Resources Assigned:		** Resources Below in Bold are 12 Hour **				Reporting Location, Special Equipment, Remarks, Notes, and Information Time Location	
Resource Identifier	ALS	Leader	Personnel	Request #			
STC NEU 9230C		Wallen, Matt	19	E-79	0700-0700	DP 24	
STC XAL 2005C		Kleven, Jeff	22	E-428	0700-0700	DP 24	
DOZ PVT E-96		Gilbert, Bruce	2	E-96	0700-0700	DP 24	
DOZ PVT E-244		Dills, Evan	2	E-244	0700-0700	DP 24	
W/T PVT E-357		Ed	2	E-357	0700-0700	DP 24	
W/T PVT E-360		Miller, Jim	2	E-360	0700-0700	DP 24	
W/T PVT E-395		Smith, Rockie	2	E-395	0700-0700	DP 24	
W/T PVT E-642		Kelly, Tom	2	E-642	0700-0700	DP 24	
W/T PVT E-643		Hughes, David	2	E-643	0700-0700	DP 24	
MAS PVT E-1122		Despars, Dave	1	E-1122	0700-1900	DP 24	
MAS PVT E-1123		Brown, Brian	2	E-1123	0700-1900	DP 24	
FALM O-673		Alderman, Mike	2	O-673	0700-1900	DP 24	
CRW CNA TFB		Orton, Mike	118	C-9028	0700-1900	DP 24	
CRW CNA TFC		Ruiz, Jennifer	118		0700-1900	DP 24	
CRW CNA TFD		Rodney, Jared	85		0700-1900	DP 24	
FEMP SEELEY O-992	ALS	Seeley, Robert John	1	O-992	0700-1900	DP 24	
FEMP ZUHLKE O-991	ALS	Zuhlke, Justin Wayne	1	O-991	0700-1900	DP 24	
REMS XSCC REMS 4		Perez, George	4	O-802	0700-1900	DP 24	
6. Work Assignments: Fall hazard trees that will threaten control lines from Eastman Gulch to DP 25. Mop up 500 feet or 100%. Pull hose lays on Deadwood Rd. Backhaul garbage, hose, and water.							
7. Special Instructions: Identify for backhaul any unneeded hose and equipment in the fire perimeter.							
8. Communications (radio and/or phone contact numbers needed for this assignment):							
Name	Ch	Function	Rx Freq	Rx Tone	Tx Freq	Tx Tone	Notes
SHA CMD	1	COMMAND	154.4300	136.5	159.0150	123.0 (T2)	(T2) BASS MTN
CDF T27	8	TACTICAL	159.3075	192.8 (T16)	159.3075	192.8 (T16)	
CALCORD	15	MEDICAL	156.0750	156.7 (T6)	156.0750	156.7 (T6)	MEDICAL
A-G CDF T17	6	A-G	159.3150	192.8	159.3150	192.8	A-G CDF TAC 17
GUARD	16	EMERGENCY	168.6250	0	168.6250	110.9	EMERGENCY USE ONLY
9. Prepared by: Name: B.J. Corey Pos/Title: RESL Signature:							
ICS 204		Date/Time: 8/12/2018		2216 hrs			

ASSIGNMENT LIST (ICS 204)

1. Incident Name: Carr		2. Operational Period: Date From: 08/13/18 Date To: 08/14/18 Time From: 0700 Time To: 0700			3. Branch: III Div/Group: H/I Hotel			
4. Operations Personnel: Operations Section Chief: T. Brownell/ A. McBath (T) Day Night Ops: F. Berbena Branch Director: B. Noel Branch Safety: N. Martino / R. Booker (12 HR) Division/Group Supervisor: D. Boic/ C. Reginatto								
5. Resources Assigned:		** Resources Below in Bold are 12 Hour **					Reporting Location, Special Equipment, Remarks, Notes, and Information Time Location	
Resource Identifier	ALS	Leader	Personnel	Request #				
STC HUU 9120C		Mclaughlin, Ron	15	E-13	0700-0700	DP 25		
T/F TX 5		Watson, Bob	14	E-1227	0700-0700	DP 25		
T/F XSK 1		Duncan, Johnathan	15	E-37	0700-0700	DP 25		
CRW SHF 15B		Fields, Dwayne	20	C-200012	0700-1900	DP 25		
CRW CNA TFA		Schlickheiser, John	109	C-9027	0700-1900	DP 25		
W/T PVT E-131		Stanford, Brad	2	E-131	0700-0700	DP 25		
W/T PVT E-356		Miller, Tony	2	E-356	0700-0700	DP 25		
W/T PVT E-361		Debois, Scott	2	E-361	0700-0700	DP 25		
W/T PVT E-393		Troedel, Bryan	1	E-393	0700-1900	DP 25		
W/T PVT E-639		John Traumiller	2	E-639	0700-0700	DP 25		
W/T PVT E-640		Bendall, John	2	E-640	0700-0700	DP 25		
W/T PVT E-886		Newberry, Scott	2	E-886	0700-0700	DP 25		
W/T PVT E-1107		Hizey, Blake	2	E-1107	0700-0700	DP 25		
W/T PVT E-1164		Adair, Ernie	1	E-1164	1900-0700	DP 25		
MAS PVT E-760		Lester, Louis	2	E-760	0700-1900	DP 25		
MAS PVT E-764		Grass, Kelvin	2	E-764	0700-1900	DP 25		
FEMP SUTTON O-205	ALS	Sutton, Derek	1	O-205	0700-0700	DP 25		
FEMT THOMPSON O-339		Thompson, Keith	1	O-339	0700-0700	DP 25		
6. Work Assignments: Hold fire in planned lines. Mop up 300 feet or 100%. Backhaul garbage, hose, and water. Patrol.								
7. Special Instructions: Identify for backhaul any unneeded hose and equipment in the fire perimeter.								
8. Communications (radio and/or phone contact numbers needed for this assignment):								
Name	Ch	Function	Rx Freq	Rx Tone	Tx Freq	Tx Tone	Notes	
SHA CMD	1	COMMAND	154.4300	136.5	159.0150	123.0 (T2)	(T2) BASS MTN	
CDF T26	7	TACTICAL	159.2925	192.8 (T16)	159.2925	192.8 (T16)		
CALCORD	15	MEDICAL	156.0750	156.7 (T6)	156.0750	156.7 (T6)	MEDICAL	
A-G CDF T17	6	A-G	159.3150	192.8	159.3150	192.8	A-G CDF TAC 17	
GUARD	16	EMERGENCY	168.6250	0	168.6250	110.9	EMERGENCY USE ONLY	
9. Prepared by: Name: B.J. Corey		Pos/Title: RESL		Signature:				
ICS 204		Date/Time: 8/12/2018 2216 hrs						

ASSIGNMENT LIST (ICS 204)

1. Incident Name: Carr		2. Operational Period: Date From: 08/13/18 Date To: 08/14/18 Time From: 0700 Time To: 0700				3. Branch: III Div/Group: M Mike Page 1 of 2	
4. Operations Personnel: Operations Section Chief: T. Brownell/ A. McBath (T) Day Night Ops: F. Berbena Branch Director: B. Noel Branch Safety: N. Martino / R. Booker (12 HR) Division/Group Supervisor: D. Boic							
5. Resources Assigned:		** Resources Below in Bold are 12 Hour **				Reporting Location, Special Equipment, Remarks, Notes, and Information Time Location	
Resource Identifier	ALS	Leader	Personnel	Request #			
STC MRN 9150C	ALS	Overshiner, Todd	18	E-210	0700-0700	DP 37	
STC TGU 9251C		Magana, Gerry	17	E-1	0700-0700	DP 37	
T/F TX TF 1		Birkenfeld, Dwayne	17	E-1223	0700-0700	DP 37	
STG LMU 9223G		Luetke, Bryan	37	C-47	0700-0700	DP 37	
STG SHU 9247G		Covert, Don	33	C-161	0700-0700	DP 37	
DOZ PVT E-51		Cattaneo, Angelo	2	E-51	0700-0700	DP 37	
DOZ PVT E-52		Cattaneo, Angelo	2	E-52	0700-0700	DP 37	
DOZ PVT E-56		Caton, Jamie	2	E-56	0700-0700	DP 37	
DOZ PVT E-90		Stevenson, Tad	3	E-90	0700-0700	DP 37	
DOZ PVT E-91		George, Don	3	E-91	0700-0700	DP 37	
DOZ PVT E-200		Murdock, Mike	2	E-200	0700-0700	DP 37	
DOZ PVT E-339		Coughlin, Steve	2	E-339	0700-0700	DP 37	
DOZ PVT E-409		Morrison, Matthew	2	E-409	0700-0700	DP 37	
W/T PVT E-127		Mayberry, Steve	2	E-127	0700-0700	DP 37	
W/T PVT E-128		Korbly, Eric	2	E-128	0700-0700	DP 37	
W/T PVT E-129		Dunne, Nick	2	E-129	0700-0700	DP 37	
W/T PVT E-130		Scovil, Peter	2	E-130	0700-0700	DP 37	
W/T PVT E-134		Anderson, Sandra	2	E-134	0700-0700	DP 37	
6. Work Assignments: Mop up 300 feet or 100%. Backhaul garbage, hose, and water.							
7. Special Instructions: Identify for backhaul any unneeded hose and equipment in the fire perimeter.							
8. Communications (radio and/or phone contact numbers needed for this assignment):							
Name	Ch	Function	Rx Freq	Rx Tone	Tx Freq	Tx Tone	Notes
SHA CMD	1	COMMAND	154.4300	136.5	159.0150	123.0 (T2)	(T2) BASS MTN
VFIRE 24	8	TACTICAL	154.2725	156.7 (T6)	154.2725	156.7 (T6)	
CALCORD	15	MEDICAL	156.0750	156.7 (T6)	156.0750	156.7 (T6)	MEDICAL
A-G CDF T17	6	A-G	159.3150	192.8	159.3150	192.8	A-G CDF TAC 17
GUARD	16	EMERGENCY	168.6250	0	168.6250	110.9	EMERGENCY USE ONLY
9. Prepared by: Name: B.J. Corey		Pos/Title: RESL		Signature:			
ICS 204		Date/Time: 8/12/2018 2216 hrs					

ASSIGNMENT LIST (ICS 204)

1. Incident Name: Carr		2. Operational Period: Date From: 08/13/18 Date To: 08/14/18 Time From: 0700 Time To: 0700				3. Branch: IV Div/Group: N November **24 Hr**	
4. Operations Personnel: Operations Section Chief: T. Brownell/ A. McBath (T) Day Night Ops: F. Berbena Branch Director: M. Fields Branch Safety: S. Wilson / M. Weidner (T) Division/Group Supervisor: C. Martinelli/ J. Hannan (T)							
5. Resources Assigned:		**All Resources Below are 24 Hour Resources**				Reporting Location, Special Equipment, Remarks, Notes, and Information Time Location	
Resource Identifier	ALS	Leader	Personnel	Request #			
STC TGU 9250C		Emerick, Andy	18	E-16	0700-0700	DP 33	
STG TGU 9253G		Thomas, Luke	35	C-1	0700-0700	DP 33	
DOZ TGU 2540		Oliver, Kevin	3	E-47	0700-0700	DP 33	
DOZ PVT E-55		Schnetzer, Donald	2	E-55	0700-0700	DP 33	
DOZ PVT E-93		Miller, Bruce	2	E-93	0700-0700	DP 33	
DOZ PVT E-884		Carlton, James	2	E-884	0700-0700	DP 33	
W/T PVT E-202		Gold, Rich	2	E-202	0700-0700	DP 33	
W/T PVT E-203		Kiser, Kyle	2	E-203	0700-0700	DP 33	
W/T PVT E-890		Kotterman, Dustin	2	E-890	0700-0700	DP 33	
W/T PVT E-1114		Mori, Nathan	2	E-1114	0700-0700	DP 33	
W/T PVT E-1116		Esry, Jim	2	E-1116	0700-0700	DP 33	
W/T PVT E-1119		Carr, David	2	E-1119	0700-0700	DP 33	
W/T PVT E-1157		Anderson, Michelle	2	E-1157	0700-0700	DP 33	
W/T PVT E-1161		Johnson, Matt	2	E-1161	0700-0700	DP 33	
W/T PVT E-1162		Labow, Ron	2	E-1162	0700-0700	DP 33	
W/T PVT E-1163		Rotea, Andy	2	E-1163	0700-0700	DP 33	
HEQB WATNER O-292		Watner, Mike	1	O-292	0700-0700	DP 33	
HEQB (T) WELCH O-660		Welch, Anthony	1	O-660	0700-0700	DP 33	
FEMP DOSH O-925	ALS	Dosh, Jason	1	O-925	0700-0700	DP 33	
FEMT GARCIA O-879		Garcia, Robert A	1	O-879	0700-0700	DP 33	
REMS XSJ 3		Smith, Eric	4	O-803	0700-0700	DP 33	
6. Work Assignments: Hold fire in planned lines. Improve and hold control lines. Mop up 300 feet or 100%. Backhaul garbage, hose, and water.							
7. Special Instructions: ***BR IV resources will be supported out of Lakehead Camp following shift.*** Identify for backhaul any unneeded hose and equipment in the fire perimeter.							
8. Communications (radio and/or phone contact numbers needed for this assignment):							
Name	Ch	Function	Rx Freq	Rx Tone	Tx Freq	Tx Tone	Notes
SHA CMD	1	COMMAND	154.4300	136.5	159.0150	123.0 (T2)	(T2) BASS MTN
NIFC T7	13	TACTICAL	168.2500	131.8 (T3)	168.2500	131.8 (T3)	
CALCORD	15	MEDICAL	156.0750	156.7 (T6)	156.0750	156.7 (T6)	MEDICAL
A-G CDF T17	6	A-G	159.3150	192.8	159.3150	192.8	A-G CDF TAC 17
GUARD	16	EMERGENCY	168.6250	0	168.6250	110.9	EMERGENCY USE ONLY
9. Prepared by: Name: B.J. Corey		Pos/Title: RESL		Signature:			
ICS 204		Date/Time: 8/12/2018		2216 hrs			

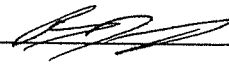
ASSIGNMENT LIST (ICS 204)

1. Incident Name: Carr		2. Operational Period: Date From: 08/13/18 Date To: 08/14/18 Time From: 0700 Time To: 0700				3. Branch: IV Div/Group: N November **Day Page 1 of 2**	
4. Operations Personnel: Operations Section Chief: T. Brownell/ A. McBath (T) Day Night Ops: F. Berbena Branch Director: M. Fields Branch Safety: S. Wilson / M. Weidner (T) Division/Group Supervisor: C. Martinelli/ J. Hannan (T)							
5. Resources Assigned: **All Resources Below are 12 Hour Day Resources**							
Resource Identifier	ALS	Leader	Personnel	Request #	Reporting Location, Special Equipment, Remarks, Notes, and Information Time Location		
STF FL S/T 1		Harris, Charles Ashley	12	E-679	0700-1900	DP 33	
T/F CARR #20		Brady/M.Lilienthal/C.Egge	20		0700-1900	DP 33	
T/F CARR #21		Mcquead/A.Davis/B.Hamp	24		0700-1900	DP 33	
ENG T6 WNP 4		Tucker, Jason	3	E-32	0700-1900	DP 33	
ENG T6 WAX WORLDLAND 64		Gomez, Ben	3	E-234	0700-1900	DP 33	
ENG T6 GAR BRUSH 114		Baxley, Ashley	3	E-814	0700-1900	DP 33	
CRW FTA FORT APACHE #01		Burnette, Kenny	20	C-200035	0700-1900	DP 33	
CRW CCC SHASTA 21		Cruz, Lloyd	17	C-200040	0700-1900	DP 33	
DOZ PVT E-200006		Warner, Gary	3	E-200006	0700-1900	DP 33	
DOZ PVT E-200017		Henthorn, Jeff	2	E-200017	0700-1900	DP 33	
DOZ PVT E-200018		Sale, Ben	2	E-200018	0700-1900	DP 33	
DOZ PVT E-200019		Hays, Bob	2	E-200019	0700-1900	DP 33	
W/T PVT E-1158		Hodgson, Carrie	1	E-1158	0700-1900	DP 33	
W/T PVT E-1159		Dahl, Mark	1	E-1159	0700-1900	DP 33	
W/T PVT E-1160		Bowie, David	1	E-1160	0700-1900	DP 33	
W/T PVT E-1185		Williams, Wayne	1	E-1185	0700-1900	DP 33	
W/T PVT E-200013		Jungwirth, Jerry	1	E-200013	0700-1900	DP 33	
EXC PVT E-958		Hackworth, Doug	1	E-958	0700-1900	DP 33	
6. Work Assignments: Hold fire in planned lines. Improve and hold control lines. Mop up 300 feet or 100%. Backhaul garbage, hose, and water.							
7. Special Instructions: ***BR IV resources will be supported out of Lakehead Camp following shift.*** Identify for backhaul any unneeded hose and equipment in the fire perimeter.							
8. Communications (radio and/or phone contact numbers needed for this assignment):							
Name	Ch	Function	Rx Freq	Rx Tone	Tx Freq	Tx Tone	Notes
SHA CMD	1	COMMAND	154.4300	136.5	159.0150	123.0 (T2)	(T2) BASS MTN
NIFC T7	13	TACTICAL	168.2500	131.8 (T3)	168.2500	131.8 (T3)	
CALCORD	15	MEDICAL	156.0750	156.7 (T6)	156.0750	156.7 (T6)	MEDICAL
A-G CDF T17	6	A-G	159.3150	192.8	159.3150	192.8	A-G CDF TAC 17
GUARD	16	EMERGENCY	168.6250	0	168.6250	110.9	EMERGENCY USE ONLY
9. Prepared by: Name: B.J. Corey Pos/Title: RESL							
ICS 204		Date/Time: 8/12/2018		2216 hrs		Signature:	

ASSIGNMENT LIST (ICS 204)

1. Incident Name: Carr		2. Operational Period: Date From: 08/13/18 Date To: 08/14/18 Time From: 0700 Time To: 0700			3. Branch: IV Div/Group: O Oscar **24 Hr**		
4. Operations Personnel: Operations Section Chief: T. Brownell/ A. McBath (T) Day Night Ops: F. Berbena Branch Director: M. Fields Branch Safety: S. Wilson / M. Weidner (T) Division/Group Supervisor: D. Bakken							
5. Resources Assigned:		**All Resources Below are 24 Hour Resources**			Reporting Location, Special Equipment, Remarks, Notes, and Information Time Location		
Resource Identifier	ALS	Leader	Personnel	Request #			
STA OES5 5805A		Alcorn, Billy	22	E-425	0700-0700	DP 33	
STB OES 5808B		Jelinek, Chris	21	E-426	0700-0700	DP 33	
STC HUU 9121C		Bryant, Erik	17	E-681	0700-0700	DP 33	
STC BTU 9212C		Reid, Bill	16	E-279	0700-0700	DP 33	
STG HUU 9126G		Burgess, Jake	33	C-70	0700-0700	DP 33	
STG SHU 9243G		Smutz, Jan	35	C-29	0700-0700	DP 33	
W/T PVT E-125		Richison, Walton	2	E-125	0700-0700	DP 33	
W/T PVT E-205		Vanlandingham, Mike	2	E-205	0700-0700	DP 33	
W/T PVT E-889		Vieyra, Rich	2	E-889	0700-0700	DP 33	
W/T PVT E-1108		Durant, Wes	2	E-1108	0700-0700	DP 33	
W/T PVT E-1109		Tobiasson, Raynold	2	E-1109	0700-0700	DP 33	
W/T PVT E-1118		Drum, David	2	E-1118	0700-0700	DP 33	
W/T PVT E-1165		Deskovick, Matt	2	E-1165	0700-0700	DP 33	
W/T PVT E-1166		Dempsey, Mike	2	E-1166	0700-0700	DP 33	
W/T PVT E-1171		Mcgarr, Dennis	2	E-1171	0700-0700	DP 33	
SOFR STUART O-918		Stuart, Douglas L	1	O-918	0700-0700	DP 33	
SOFR LINK (T) O-220.60		Link, Stephen	1	O-220.60	0700-0700	DP 33	
FEMP MARTIN O-204	ALS	Martin, Drake	1	O-204	0700-0700	DP 33	
FEMT BENZ O-996		Benz, Brandon M	1	O-996	0700-0700	DP 33	
6. Work Assignments: Prepare indirect control lines for possible firing operations. Improve and hold control lines. Prepare for firing operations. Mop up 300 feet or 100%. Backhaul garbage, hose, and water.							
7. Special Instructions: ***BR IV resources will be supported out of Lakehead Camp following shift.*** Identify for backhaul any unneeded hose and equipment in the fire perimeter. The following resources are to meet with "Shasta Boat T/F" to be taken by boat to the peninsula to continue handline construction: Shasta Lake IHC, Tahoe IHC, SHU STG 9234G, SHU STG 9126G.							
8. Communications (radio and/or phone contact numbers needed for this assignment):							
Name	Ch	Function	Rx Freq	Rx Tone	Tx Freq	Tx Tone	Notes
SHA CMD	1	COMMAND	154.4300	136.5	159.0150	123.0 (T2)	(T2) BASS MTN
NIFC T6	12	TACTICAL	166.7750	131.8 (T3)	166.7750	131.8 (T3)	
CALCORD	15	MEDICAL	156.0750	156.7 (T6)	156.0750	156.7 (T6)	MEDICAL
A-G CDF T17	6	A-G	159.3150	192.8	159.3150	192.8	A-G CDF TAC 17
GUARD	16	EMERGENCY	168.6250	0	168.6250	110.9	EMERGENCY USE ONLY
9. Prepared by: Name: B.J. Corey		Pos/Title: RESL		Signature:			
ICS 204		Date/Time: 8/12/2018		2216 hrs			

ASSIGNMENT LIST (ICS 204)

1. Incident Name: Carr		2. Operational Period: Date From: 08/13/18 Date To: 08/14/18 Time From: 0700 Time To: 0700				3. Branch: IV Div/Group: O Oscar **Day**	
4. Operations Personnel: Operations Section Chief: T. Brownell/ A. McBath (T) Day Night Ops: F. Berbena Branch Director: M. Fields Branch Safety: S. Wilson / M. Weidner (T) Division/Group Supervisor: D. Bakken							
5. Resources Assigned: **All Resources Below are 12 Hour Day Resources**							
Resource Identifier	ALS	Leader	Personnel	Request #	Reporting Location, Special Equipment, Remarks, Notes, and Information		
					Time	Location	
CRW TNF Tahoe IHC		Guerrero, Daniel	20	C-200028	0700-1900	DP 33	
CRW ENF IRON MOUNTAIN		Potter, Eric	22	C-200011	0700-1900	DP 33	
CRW BDF 2		Gillespie, Robert	20	C-122	0700-1900	DP 33	
CRW CNF TRABUCO		Reyes, Steve	21	C-200013	0700-1900	DP 33	
CRW CNF DESCANSO CREW 5		Healy, Patrick	21	C-200014	0700-1900	DP 33	
DOZ TGU 2542		Wolter, Corey	2	E-20	0700-1900	DP 33	
W/T PVT E-200014		Small, Brent	1	E-200014	0700-1900	DP 33	
FALM O-94		Hodgecon, Russell	2	O-94	0700-1900	DP 33	
FALM O-96		Derek, Jacob	2	O-96	0700-1900	DP 33	
FALM O-669		Garwood, Lance	2	O-669	0700-1900	DP 33	
FALM O-851		Falm Pvt Volcano Creek	2	O-851	0700-1900	DP 33	
FALM O-200110		Mckellar, Doug	2	O-200110	0700-1900	DP 33	
TFLD GUTIERREZ O-200181		Gutierrez, Luis Allen	1	O-200181	0700-1900	DP 33	
HEQB TAVERNER O-200165		Taverner, Dyson Matthew	1	O-200165	0700-1900	DP 33	
HEQB BANASZAK O-200178		Banaszak, Timothy J	1	O-200178	0700-1900	DP 33	
FEMT WATSON O-200011		Watson, Matthew	1	O-200011	0700-1900	DP 33	
FEMT CHRISTIAN O-200012		Christian, Thomas John	1	O-200012	0700-1900	DP 33	
6. Work Assignments: Prepare indirect control lines for possible firing operations. Improve and hold control lines. Prepare for firing operations. Mop up 300 feet or 100%. Backhaul garbage, hose, and water.							
7. Special Instructions: ***BR IV resources will be supported out of Lakehead Camp following shift.*** Identify for backhaul any unneeded hose and equipment in the fire perimeter. The following resources are to meet with "Shasta Boat T/F" to be taken by boat to the peninsula to continue handline construction: Shasta Lake IHC, Tahoe IHC, SHU STG 9234G, SHU STG 9126G.							
8. Communications (radio and/or phone contact numbers needed for this assignment):							
Name	Ch	Function	Rx Freq	Rx Tone	Tx Freq	Tx Tone	Notes
SHA CMD	1	COMMAND	154.4300	136.5	159.0150	123.0 (T2)	(T2) BASS MTN
NIFC T6	12	TACTICAL	166.7750	131.8 (T3)	166.7750	131.8 (T3)	
CALCORD	15	MEDICAL	156.0750	156.7 (T6)	156.0750	156.7 (T6)	MEDICAL
A-G CDF T17	6	A-G	159.3150	192.8	159.3150	192.8	A-G CDF TAC 17
GUARD	16	EMERGENCY	168.6250	0	168.6250	110.9	EMERGENCY USE ONLY
9. Prepared by: Name: B.J. Corey Pos/Title: RESL Signature: 							
ICS 204 Date/Time: 8/12/2018 2216 hrs							

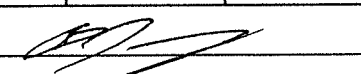
ASSIGNMENT LIST (ICS 204)

1. Incident Name: Carr		2. Operational Period: Date From: 08/13/18 Date To: 08/14/18 Time From: 0700 Time To: 0700				3. Branch: IV Div/Group: O Oscar **Night**	
4. Operations Personnel: Operations Section Chief: T. Brownell/ A. McBath (T) Day Night Ops: F. Berbena Branch Director: M. Fields Branch Safety: S. Wilson / M. Weidner (T) Division/Group Supervisor: D. Bakken							
5. Resources Assigned: **All Resources Below are 12 Hour Night Resources**							
Resource Identifier	ALS	Leader	Personnel	Request #	Reporting Location, Special Equipment, Remarks, Notes, and Information <small>Time Location</small>		
CRW SHF SHASTA LAKE		Flattley, Isaac	20	C-160	1900-0700	DP 33	
CRW MOC Interagency Crew #5		Hartwig, Daniel A	20	C-200034	1900-0700	DP 33	
CRW SQF 5		Sartin, Jason	21	C-120	1900-0700	DP 33	
DOZ PVT E-200007		Clark, Steve	2	E-200007	1900-0700	DP 33	
DOZ PVT E-200011		Furtado, Shawn	2	E-200011	1900-0700	DP 33	
W/T PVT E-1173		Becker, Clark	1	E-1173	1900-0700	DP 33	
W/T PVT E-1176		Sperberck, Bill	1	E-1176	1900-0700	DP 33	
HEQB HARRIS O-200200		Harris, Tyler W	1	O-200200	1900-0700	DP 33	
6. Work Assignments: Prepare indirect control lines for possible firing operations. Improve and hold control lines. Prepare for firing operations. Mop up 300 feet or 100%. Backhaul garbage, hose, and water.							
7. Special Instructions: ***BR IV resources will be supported out of Lakehead Camp following shift.*** Identify for backhaul any unneeded hose and equipment in the fire perimeter. The following resources are to meet with "Shasta Boat T/F" to be taken by boat to the peninsula to continue handline construction: Shasta Lake IHC, Tahoe IHC, SHU STG 9234G, SHU STG 9126G.							
8. Communications (radio and/or phone contact numbers needed for this assignment):							
Name	Ch	Function	Rx Freq	Rx Tone	Tx Freq	Tx Tone	Notes
SHA CMD	1	COMMAND	154.4300	136.5	159.0150	123.0 (T2)	(T2) BASS MTN
NIFC T6	12	TACTICAL	166.7750	131.8 (T3)	166.7750	131.8 (T3)	
CALCORD	15	MEDICAL	156.0750	156.7 (T6)	156.0750	156.7 (T6)	MEDICAL
A-G CDF T17	6	A-G	159.3150	192.8	159.3150	192.8	A-G CDF TAC 17
GUARD	16	EMERGENCY	168.6250	0	168.6250	110.9	EMERGENCY USE ONLY
9. Prepared by: Name: B.J. Corey Pos/Title: RESL Signature:							
ICS 204 Date/Time: 8/12/2018 2216 hrs							

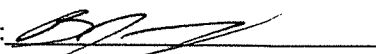
ASSIGNMENT LIST (ICS 204)

1. Incident Name: Carr		2. Operational Period: Date From: 08/13/18 Date To: 08/14/18 Time From: 0700 Time To: 0700			3. Branch: V Div/Group: P/S Papa Page 1 of 2		
4. Operations Personnel: Operations Section Chief: T. Brownell/ A. McBath (T) Day Night Ops: F. Berbena Branch Director: A. Latta (T) Branch Safety: C. Porter / M. Cobb (T) Division/Group Supervisor: K. McDonald							
5. Resources Assigned: ** Resources Below in Bold are 12 Hour **							
Resource Identifier	ALS	Leader	Personnel	Request #	Reporting Location, Special Equipment, Remarks, Notes, and Information	Time	Location
STA OES 3802A	ALS	Rodgers, Adrian	21	E-269	0700-0700	DP 47	
STC SCU 9160C		Collins, Craig	22	E-249	0700-0700	DP 47	
STC XTB 4230C	ALS	Zlendick, Brad	17	E-209	0700-0700	DP 47	
T/F TX 3		Woodward, Brandon	17	E-1225	0700-0700	DP 47	
T/F CARR #25		M. Bertrand/J. Rhodes	23		0700-1900	DP 47	
STG HUU 9122G		Mahoney, James	35	C-14	0700-0700	DP 47	
STG SKU 9261G		Pindell, Seth	37	C-5	0700-0700	DP 47	
DOZ PVT E-92		Rhoades, Steven	2	E-92	0700-0700	DP 47	
DOZ PVT E-94		Bruce Miller	2	E-94	0700-0700	DP 47	
DOZ PVT E-241		Larue, Clint	2	E-241	0700-0700	DP 47	
DOZ PVT E-242		Drue, Gangbin	2	E-242	0700-0700	DP 47	
W/T PVT E-352		Andrews, Tammy	2	E-352	0700-0700	DP 47	
W/T PVT E-354		Matteroli, Clay	2	E-354	0700-0700	DP 47	
W/T PVT E-397		Lopez, Frankie	2	E-397	0700-0700	DP 47	
W/T PVT E-398		Craig, Davis	2	E-398	0700-0700	DP 47	
W/T PVT E-758		Jones, Ernest	2	E-758	0700-0700	DP 47	
W/T PVT E-887		Tallon, Lowell	2	E-887	0700-0700	DP 47	
W/T PVT E-1156		Wooten, William	2	E-1156	0700-0700	DP 47	
6. Work Assignments: Prepare indirect control lines for possible firing operations. Fall hazard trees, and trees that will threaten control lines. Improve and hold control lines. Mop up 300 feet or 100%. Backhaul garbage, hose, and water.							
7. Special Instructions: Identify for backhaul any unneeded hose and equipment in the fire perimeter. Shasta Boat T/F Contact Info: Travis Gee / State Parks (24 Hour Resource) Cell Primary: (530) 990-8501 / Cell Secondary: (530) 370-8180 / SAT Phone: 881621411613							
8. Communications (radio and/or phone contact numbers needed for this assignment):							
Name	Ch	Function	Rx Freq	Rx Tone	Tx Freq	Tx Tone	Notes
SHA CMD	1	COMMAND	154.4300	136.5	159.0150	123.0 (T2)	(T2) BASS MTN
VFIRE 26	10	TACTICAL	154.3025	156.7 (T6)	154.3025	156.7 (T6)	
CALCORD	15	MEDICAL	156.0750	156.7 (T6)	156.0750	156.7 (T6)	MEDICAL
A-G CDF T17	6	A-G	159.3150	192.8	159.3150	192.8	A-G CDF TAC 17
GUARD	16	EMERGENCY	168.6250	0	168.6250	110.9	EMERGENCY USE ONLY
9. Prepared by: Name: B.J. Corey		Pos/Title: RESL		Signature:			
ICS 204		Date/Time: 8/12/2018 2216 hrs					

ASSIGNMENT LIST (ICS 204)

1. Incident Name: Carr		2. Operational Period: Date From: 08/13/18 Date To: 08/14/18 Time From: 0700 Time To: 0700			3. Branch: Supp Repair Div/Group: Redding Group		
4. Operations Personnel: Operations Section Chief: T. Brownell/ A. McBath (T) Day Night Ops: F. Berbena Branch Director: B. Rowe (12Hr) Division/Group Supervisor: M. Rosan (12Hr)					Reporting Location, Special Equipment, Remarks, Notes, and Information Time Location		
5. Resources Assigned: ** Resources Below in Bold are 12 Hour **							
Resource Identifier	ALS	Leader	Personnel	Request #			
CRW NPX SAMOA 61		Lee, Andrew	21	C-123	0700-1900	L. Springs Rd.	
DOZ PVT E-87		White, Dusty	2	E-87	0700-1900	L. Springs Rd.	
DOZ PVT E-858		Sanders, Danny	2	E-858	0700-1900	L. Springs Rd.	
DOZ PVT E-879		Klauer, Jim	2	E-879	0700-1900	L. Springs Rd.	
W/T PVT E-800		Vest, Scott	1	E-800	0700-1900	L. Springs Rd.	
W/T PVT E-1103		Harp, Gloria	1	E-1103	0700-1900	L. Springs Rd.	
W/T PVT E-1181		Baldwin, Crystal	1	E-1181	0700-1900	L. Springs Rd.	
EXC PVT E-1143		Mcbride, Andrew	1	E-1143	0700-1900	L. Springs Rd.	
EXC PVT E-1144		Anderson, Todd	1	E-1144	0700-1900	L. Springs Rd.	
EXC PVT E-1190		Ingram, Brad	1	E-1190	0700-1900	L. Springs Rd.	
EXC PVT E-1200		White, Bill	1	E-1200	0700-1900	L. Springs Rd.	
EXC PVT E-1234		Mike Francis	1	E-1234	0700-1900	L. Springs Rd.	
FALM O-852		Mills, Shane	2	O-852	0700-1900	L. Springs Rd.	
6. Work Assignments: Repair fire lines, spread berms and slash piles. Repair fences. Identify suppression repair needs.							
7. Special Instructions: Identify for backhaul any unneeded hose and equipment in the fire perimeter.							
8. Communications (radio and/or phone contact numbers needed for this assignment):							
Name	Ch	Function	Rx Freq	Rx Tone	Tx Freq	Tx Tone	Notes
SHA CMD	1	COMMAND	154.4300	136.5	159.0150	123.0 (T2)	(T2) BASS MTN
VTAC13	14	TACTICAL	158.7375	156.7 (T6)	158.7375	156.7 (T6)	
CALCORD	15	MEDICAL	156.0750	156.7 (T6)	156.0750	156.7 (T6)	MEDICAL
A-G CDF T17	6	A-G	159.3150	192.8	159.3150	192.8	A-G CDF TAC 17
GUARD	16	EMERGENCY	168.6250	0	168.6250	110.9	EMERGENCY USE ONLY
9. Prepared by: Name: B.J. Corey Pos/Title: RESL Signature: 							
ICS 204		Date/Time: 8/12/2018		2216 hrs			

ASSIGNMENT LIST (ICS 204)

1. Incident Name: Carr		2. Operational Period: Date From: 08/13/18 Date To: 08/14/18 Time From: 0700 Time To: 0700				3. Branch: Supp Repair Div/Group: Lakehead Group		
4. Operations Personnel: Operations Section Chief: T. Brownell/ A. McBath (T) Day Night Ops: F. Berbena Branch Director: B. Rowe (12Hr) Division/Group Supervisor: J. Mcelroy (12Hr)								
5. Resources Assigned:		** Resources Below in Bold are 12 Hour **				Reporting Location, Special Equipment, Remarks, Notes, and Information Time Location		
Resource Identifier	ALS	Leader	Personnel	Request #				
READ MCFADIN O-940		Mcfadin, Michael	1	O-940	0700-1900			Lakehead Camp
READ MORRILL O-973		Morrill, David	1	O-973	0700-1900			Lakehead Camp
READ EVANS O-200086		Evans, Lowell	1	O-200086	0700-1900			Lakehead Camp
READ KNIGHT O-200202		Knight, Ashley	1	O-200202	0700-1900			Lakehead Camp
READ (T) PADILLA O-200019		Padilla, Matthew	1	O-200019	0700-1900			Lakehead Camp
READ (T) MARTINEZ O-905		Martinez, Samuel	1	O-905	0700-1900			Lakehead Camp
FFT2 CORDTZ O-927		Cordtz, Erik A	1	O-927	0700-1900			Lakehead Camp
6. Work Assignments: Identify resources at risk working with OPS. Identify suppression repair activities.								
7. Special Instructions: Identify for backhaul any unneeded hose and equipment in the fire perimeter.								
8. Communications (radio and/or phone contact numbers needed for this assignment):								
Name	Ch	Function	Rx Freq	Rx Tone	Tx Freq	Tx Tone	Notes	
SHA CMD	1	COMMAND	154.4300	136.5	159.0150	123.0 (T2)	(T2) BASS MTN	
VTAC13	14	TACTICAL	158.7375	156.7 (T6)	158.7375	156.7 (T6)		
CALCORD	15	MEDICAL	156.0750	156.7 (T6)	156.0750	156.7 (T6)	MEDICAL	
A-G CDF T17	6	A-G	159.3150	192.8	159.3150	192.8	A-G CDF TAC 17	
GUARD	16	EMERGENCY	168.6250	0	168.6250	110.9	EMERGENCY USE ONLY	
9. Prepared by: Name: B.J. Corey Pos/Title: RESL Signature: 								
ICS 204		Date/Time: 8/12/2018 2216 hrs						

ASSIGNMENT LIST (ICS 204)

1. Incident Name: Carr		2. Operational Period: Date From: 08/13/18 Date To: 08/14/18 Time From: 0700 Time To: 0700				3. Branch: Supp Repair Div/Group: Shasta Group	
4. Operations Personnel: Operations Section Chief: T. Brownell/ A. McBath (T) Day Night Ops: F. Berbena Branch Director: B. Rowe (12Hr) Division/Group Supervisor: S. Larsen (12Hr)						Reporting Location, Special Equipment, Remarks, Notes, and Information Time Location	
5. Resources Assigned: ** Resources Below in Bold are 12 Hour **							
Resource Identifier	ALS	Leader	Personnel	Request #			
ENG T6 SSP E307		Tingle, Terry	4	E-479	0700-1900	Flannigan Rd.	
ENG T6 GRT 113		Schramm, Daniel	3	E-809	0700-1900	Flannigan Rd.	
DOZ PVT E-342		Leland, Ward	2	E-342	0700-1900	Flannigan Rd.	
DOZ PVT E-349		Darraha, Keith	2	E-349	0700-1900	Flannigan Rd.	
DOZ PVT E-840		O'connell, Brandon	2	E-840	0700-1900	Flannigan Rd.	
DOZ PVT E-847		Funes, Anthony	2	E-847	0700-1900	Flannigan Rd.	
DOZ PVT E-862		Greer, Mike	2	E-862	0700-1900	Flannigan Rd.	
DOZ PVT E-881		Miles, Daniel	2	E-881	0700-1900	Flannigan Rd.	
DOZ PVT E-882		Keyes, Josh	2	E-882	0700-1900	Flannigan Rd.	
W/T PVT E-126		Hudson, Ken	2	E-126	0700-1900	Flannigan Rd.	
W/T PVT E-133		Trumbly, Wayne	1	E-133	0700-1900	Flannigan Rd.	
EXC PVT E-1188		Stugelmeyer, John	1	E-1188	0700-1900	Flannigan Rd.	
EXC PVT E-1189		Smith, Kenny	1	E-1189	0700-1900	Flannigan Rd.	
ARCH PLANK O-887		Plank, Roy William	1	O-887	0700-1900	Flannigan Rd.	
HEQB MARSHALL O-89		Marshall, Dan	1	O-89	0700-1900	Flannigan Rd.	
TFLD DUFFY O-200164		Duffy, Anthony	1	O-200164	0700-1900	Flannigan Rd.	
HEQB BROWNING O-821		Browning, Gehrig	1	O-821	0700-1900	Flannigan Rd.	
TFLD FERGUSON O-200162		Ferguson, John	1	O-200162	0700-1900	Flannigan Rd.	
6. Work Assignments: Repair fire lines, spread berms and slash piles. Water bar where appropriate. Do not disturb cultural sites.							
7. Special Instructions: Identify for backhaul any unneeded hose and equipment in the fire perimeter.							
8. Communications (radio and/or phone contact numbers needed for this assignment):							
Name	Ch	Function	Rx Freq	Rx Tone	Tx Freq	Tx Tone	Notes
SHA CMD	1	COMMAND	154.4300	136.5	159.0150	123.0 (T2)	(T2) BASS MTN
VTAC13	14	TACTICAL	158.7375	156.7 (T6)	158.7375	156.7 (T6)	
CALCORD	15	MEDICAL	156.0750	156.7 (T6)	156.0750	156.7 (T6)	MEDICAL
A-G CDF T17	6	A-G	159.3150	192.8	159.3150	192.8	A-G CDF TAC 17
GUARD	16	EMERGENCY	168.6250	0	168.6250	110.9	EMERGENCY USE ONLY
9. Prepared by: Name: B.J. Corey Pos/Title: RESL Signature:							
ICS 204		Date/Time: 8/12/2018		2216 hrs			

ASSIGNMENT LIST (ICS 204)

1. Incident Name: <p style="text-align: center; margin-top: 10px;">Carr</p>		2. Operational Period: Date From: 08/13/18 Date To: 08/14/18 Time From: 0700 Time To: 0700			3. Branch: Supp Repair Div/Group: Trinity Group		
4. Operations Personnel: Operations Section Chief: T. Brownell/ A. McBath (T) Day Night Ops: F. Berbena Branch Director: B. Rowe (12Hr) Division/Group Supervisor: J. Mcelroy (12Hr)					Page 1 of 2		
5. Resources Assigned:		** Resources Below in Bold are 12 Hour **			Reporting Location, Special Equipment, Remarks, Notes, and Information <small>Time Location</small>		
<small>Resource Identifier</small>	<small>ALS</small>	<small>Leader</small>	<small>Personnel</small>	<small>Request #</small>			
DOZ PVT E-88		O'Brien, Mike	2	E-88	0700-1900	DP 34	
DOZ PVT E-243		Darr, Chris	2	E-243	0700-1900	DP 34	
DOZ PVT E-341		Carter, Kevin	2	E-341	0700-1900	DP 34	
DOZ PVT E-343		Wolfe, Larry	2	E-343	0700-1900	DP 34	
DOZ PVT E-403		Smith, Dade	2	E-403	0700-1900	DP 34	
DOZ PVT E-406		Shankles, Daryl	2	E-406	0700-1900	DP 34	
DOZ PVT E-754		Klaseen, Sven	2	E-754	0700-1900	DP 34	
DOZ PVT E-755		Ray, Clant	2	E-755	0700-1900	DP 34	
DOZ PVT E-851		Bay, Sean	2	E-851	0700-1900	DP 34	
DOZ PVT E-855		Parlet, Frank	2	E-855	0700-1900	DP 34	
W/T PVT E-142		Jones, Randy	1	E-142	0700-1900	DP 34	
W/T PVT E-308		Wharff, Steve	1	E-308	0700-1900	DP 34	
W/T PVT E-359		Hinkle, John	1	E-359	0700-1900	DP 34	
W/T PVT E-799		Prince, John	2	E-799	0700-1900	DP 34	
W/T PVT E-1112		Lemos, Darrel	1	E-1112	0700-1900	DP 34	
W/T PVT E-1113		Braziel, Mel	1	E-1113	0700-1900	DP 34	
W/T PVT E-1168		Foster, Justin	1	E-1168	0700-1900	DP 34	
W/T PVT E-1170		Roth, Bryan	2	E-1170	0700-1900	DP 34	
6. Work Assignments: Grade roads. Repair fire lines, spread berms and slash piles.							
7. Special Instructions: Identify for backhaul any unneeded hose and equipment in the fire perimeter.							
8. Communications (radio and/or phone contact numbers needed for this assignment):							
<small>Name</small>	<small>Ch</small>	<small>Function</small>	<small>Rx Freq</small>	<small>Rx Tone</small>	<small>Tx Freq</small>	<small>Tx Tone</small>	<small>Notes</small>
SHA CMD	1	COMMAND	154.4300	136.5	159.0150	123.0 (T2)	(T2) BASS MTN
VTAC13	14	TACTICAL	158.7375	156.7 (T6)	158.7375	156.7 (T6)	
CALCORD	15	MEDICAL	156.0750	156.7 (T6)	156.0750	156.7 (T6)	MEDICAL
A-G CDF T17	6	A-G	159.3150	192.8	159.3150	192.8	A-G CDF TAC 17
GUARD	16	EMERGENCY	168.6250	0	168.6250	110.9	EMERGENCY USE ONLY
9. Prepared by: Name: B.J. Corey Pos/Title: RESL ICS 204 Date/Time: 8/12/2018 2216 hrs Signature:							

ASSIGNMENT LIST (ICS 204)

1. Incident Name: <p style="text-align: center;">Carr</p>		2. Operational Period: Date From: 08/13/18 Date To: 08/14/18 Time From: 0700 Time To: 0700			3. Branch: Supp Repair Div/Group: Trinity Group <p style="text-align: right;">Page 2 of 2</p>		
4. Operations Personnel: Operations Section Chief: T. Brownell/ A. McBath (T) Day Night Ops: F. Berbena Branch Director: B. Rowe (12Hr) Division/Group Supervisor: J. Mcelroy (12Hr)							
5. Resources Assigned:				** Resources Below in Bold are 12 Hour **		Reporting Location, Special Equipment, Remarks, Notes, and Information Time Location	
Resource Identifier	ALS	Leader	Personnel	Request #			
W/T PVT E-1175		Zabel, Frank	1	E-1175	0700-1900 DP 34		
W/T PVT E-1179		Negranti, James	1	E-1179	0700-1900 DP 34		
W/T PVT E-1180		Hove, Ken	1	E-1180	0700-1900 DP 34		
W/T PVT E-1182		Leguellec, Michael	1	E-1182	0700-1900 DP 34		
W/T PVT E-1186		Condor, Dave	1	E-1186	0700-1900 DP 34		
W/T PVT E-1243		Mitchell, Shawn	1	E-1243	0700-1900 DP 34		
GRD PVT E-192		Stenberg, Mike	1	E-192	0700-1900 DP 34		
LOG PVT E-1244		Ruste, Joe	1	E-1244	0700-1900 DP 34		
READ MERRIFIELD O-200088		Merrifield, Jesse	1	O-200088	0700-1900 DP 34		
READ (T) RADTKE O-200087		Radtke, Rebecca	1	O-200087	0700-1900 DP 34		
6. Work Assignments: Grade roads. Repair fire lines, spread berms and slash piles.							
7. Special Instructions: Identify for backhaul any unneeded hose and equipment in the fire perimeter.							
8. Communications (radio and/or phone contact numbers needed for this assignment):							
Name	Ch	Function	Rx Freq	Rx Tone	Tx Freq	Tx Tone	Notes
SHA CMD	1	COMMAND	154.4300	136.5	159.0150	123.0 (T2)	(T2) BASS MTN
VTAC13	14	TACTICAL	158.7375	156.7 (T6)	158.7375	156.7 (T6)	
CALCORD	15	MEDICAL	156.0750	156.7 (T6)	156.0750	156.7 (T6)	MEDICAL
A-G CDF T17	6	A-G	159.3150	192.8	159.3150	192.8	A-G CDF TAC 17
GUARD	16	EMERGENCY	168.6250	0	168.6250	110.9	EMERGENCY USE ONLY
9. Prepared by: Name: B.J. Corey Pos/Title: RESL							
ICS 204		Date/Time: 8/12/2018 2216 hrs		Signature:			

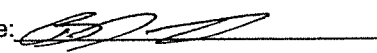
ASSIGNMENT LIST (ICS 204)

1. Incident Name: Carr		2. Operational Period: Date From: 08/13/18 Date To: 08/14/18 Time From: 0700 Time To: 0700			3. Branch: Supp Repair Div/Group: Ono Group		
4. Operations Personnel: Operations Section Chief: T. Brownell/ A. McBath (T) Day Night Ops: F. Berbena Branch Director: B. Rowe (12Hr) Division/Group Supervisor: D. Meese (12 Hr)							
5. Resources Assigned:		** Resources Below in Bold are 12 Hour **			Reporting Location, Special Equipment, Remarks, Notes, and Information Time Location		
Resource Identifier	ALS	Leader	Personnel	Request #			
DOZ SRF 4		Cedar, Hayes	4	E-34	0700-1900	South Fork Rd.	
DOZ PVT E-340		Oilar, Pat	2	E-340	0700-1900	South Fork Rd.	
DOZ PVT E-346		Looper, John	2	E-346	0700-1900	South Fork Rd.	
DOZ PVT E-405		Gill, Levi	1	E-405	0700-1900	South Fork Rd.	
DOZ PVT E-843		Olivolo, Chris	2	E-843	0700-1900	South Fork Rd.	
DOZ PVT E-200002		Cross, Chris	2	E-200002	0700-1900	South Fork Rd.	
DOZ PVT E-200003		Lindauer, Howie	2	E-200003	0700-1900	South Fork Rd.	
W/T PVT E-759		Cleer, Dana	1	E-759	0700-1900	South Fork Rd.	
W/T PVT E-1111		Franklin, Clyde	1	E-1111	0700-1900	South Fork Rd.	
W/T PVT E-1167		Reynold Hyscell	1	E-1167	0700-1900	South Fork Rd.	
EXC PVT E-763		Jairid Depue	2	E-763	0700-1900	South Fork Rd.	
MAS PVT E-897		Gregory, Stephenie	2	E-897	0700-1900	South Fork Rd.	
MAS PVT E-898		Spratt, Eric	1	E-898	0700-1900	South Fork Rd.	
GRD PVT E-1195		Lassen, Steven	1	E-1195	0700-1900	South Fork Rd.	
HEQB PETERSEN O-283		Petersen, Larry	1	O-283	0700-1900	South Fork Rd.	
FOBS MADSEN O-247		Madsen, Douglas	1	O-247	0700-1900	South Fork Rd.	
6. Work Assignments: Grade roads. Repair fire lines, spread berms and slash piles.							
7. Special Instructions: Identify for backhaul any unneeded hose and equipment in the fire perimeter.							
8. Communications (radio and/or phone contact numbers needed for this assignment):							
Name	Ch	Function	Rx Freq	Rx Tone	Tx Freq	Tx Tone	Notes
SHA CMD	1	COMMAND	154.4300	136.5	159.0150	123.0 (T2)	(T2) BASS MTN
VTAC13	14	TACTICAL	158.7375	156.7 (T6)	158.7375	156.7 (T6)	
CALCORD	15	MEDICAL	156.0750	156.7 (T6)	156.0750	156.7 (T6)	MEDICAL
A-G CDF T17	6	A-G	159.3150	192.8	159.3150	192.8	A-G CDF TAC 17
GUARD	16	EMERGENCY	168.6250	0	168.6250	110.9	EMERGENCY USE ONLY
9. Prepared by: Name: B.J. Corey		Pos/Title: RESL		Signature:			
ICS 204		Date/Time: 8/12/2018 2216 hrs					

ASSIGNMENT LIST (ICS 204)

1. Incident Name: Carr		2. Operational Period: Date From: 08/13/18 Date To: 08/14/18 Time From: 0700 Time To: 0700			3. Branch: Staging Anderson			
4. Operations Personnel: Operations Section Chief: T. Brownell/ A. McBath (T) Day Night Ops: F. Berbena Branch Director: Division/Group Supervisor: S. Bidwell (T)								
5. Resources Assigned:		** Resources Below in Bold are 12 Hour **					Reporting Location, Special Equipment, Remarks, Notes, and Information Time Location	
Resource Identifier	ALS	Leader	Personnel	Request #				
STA XCC 2020A	ALS	Mcnamara, Daniel	22	E-611	0700-1900	ICP		
DOZ PVT E-742		Sherer, Jim	2	E-742	0700-1900	ICP		
DOZ PVT E-839		Emerson, Mel	2	E-839	0700-1900	ICP		
DOZ PVT E-846		Ingram, Brad	2	E-846	0700-1900	ICP		
DOZ PVT E-867		Snyder, Jeff	2	E-867	0700-1900	ICP		
DOZ PVT E-868		Haycraft, Kevin	2	E-868	0700-1900	ICP		
DOZ PVT E-200024		Norton, Carl	2	E-200024	0700-1900	ICP		
MAS PVT E-899		Mccutcheon, Derick	1	E-899	0700-1900	ICP		
MAS PVT E-1121		Ralston, Lester	1	E-1121	0700-1900	ICP		
MAS PVT E-1124		Wurlitzer, George	1	E-1124	0700-1900	ICP		
EXC PVT E-1131		Brown, Brian	2	E-1131	0700-1900	ICP		
SKD PVT E-1147		Hobbs, Anthony	1	E-1147	0700-1900	ICP		
SKD PVT E-1148		Hobbs, Anthony	1	E-1148	0700-1900	ICP		
FELB PVT E-831		Alcuna, Eddie	2	E-831	0700-1900	ICP		
FALM O-93		Piercy, Dean	2	O-93	0700-1900	ICP		
FALM O-95		Wickstrom, Nate	2	O-95	0700-1900	ICP		
FALM O-667		McDaniel	2	O-667	0700-1900	ICP		
FALM O-668		Bundy	2	O-668	0700-1900	ICP		
6. Work Assignments: Maintain 3 minute response time.								
7. Special Instructions:								
8. Communications (radio and/or phone contact numbers needed for this assignment):								
Name	Ch	Function	Rx Freq	Rx Tone	Tx Freq	Tx Tone	Notes	
SHA CMD	1	COMMAND	154.4300	136.5	159.0150	123.0 (T2)	(T2) BASS MTN	
CALCORD	15	MEDICAL	156.0750	156.7 (T6)	156.0750	156.7 (T6)	MEDICAL	
A-G CDF T17	6	A-G	159.3150	192.8	159.3150	192.8	A-G CDF TAC 17	
GUARD	16	EMERGENCY	168.6250	0	168.6250	110.9	EMERGENCY USE ONLY	
9. Prepared by: Name: B.J. Corey		Pos/Title: RESL		Signature:				
ICS 204	Date/Time: 8/12/2018			2216 hrs				

ASSIGNMENT LIST (ICS 204)

1. Incident Name: Carr		2. Operational Period: Date From: 08/13/18 Date To: 08/14/18 Time From: 0700 Time To: 0700				3. Branch: Lakehead Staging: Lakehead	
4. Operations Personnel: Operations Section Chief: T. Brownell/ A. McBath (T) Day Night Ops: F. Berbena Branch Director: Division/Group Supervisor: J. Price (T)							
5. Resources Assigned:		** Resources Below in Bold are 12 Hour **				Reporting Location, Special Equipment, Remarks, Notes, and Information Time Location	
Resource Identifier	ALS	Leader	Personnel	Request #			
STL LMU 9222L		Cox, Christopher	7	E-21	0700-1900	Lakehead Camp	
DOZ PVT E-348		Erickson, Fred	2	E-348	0700-1900	Lakehead Camp	
DOZ PVT E-748		Burnam, Mason	2	E-748	0700-1900	Lakehead Camp	
DOZ PVT E-751		Steinman, Carl	2	E-751	0700-1900	Lakehead Camp	
DOZ PVT E-875		Cannon, Scott	2	E-875	0700-1900	Lakehead Camp	
DOZ PVT E-877		Martin, Travis	2	E-877	0700-1900	Lakehead Camp	
DOZ PVT E-878		Leffew, Clay	2	E-878	0700-1900	Lakehead Camp	
MAS PVT E-761		Gram, Clayton	1	E-761	0700-1900	Lakehead Camp	
MAS PVT E-762		Evans, Skyler	1	E-762	0700-1900	Lakehead Camp	
6. Work Assignments: Maintain 3 minute response time.							
7. Special Instructions:							
8. Communications (radio and/or phone contact numbers needed for this assignment):							
Name	Ch	Function	Rx Freq	Rx Tone	Tx Freq	Tx Tone	Notes
SHA CMD	1	COMMAND	154.4300	136.5	159.0150	123.0 (T2)	(T2) BASS MTN
CALCORD	15	MEDICAL	156.0750	156.7 (T6)	156.0750	156.7 (T6)	MEDICAL
A-G CDF T17	6	A-G	159.3150	192.8	159.3150	192.8	A-G CDF TAC 17
GUARD	16	EMERGENCY	168.6250	0	168.6250	110.9	EMERGENCY USE ONLY
9. Prepared by: Name: B.J. Corey Pos/Title: RESL Signature: 							
ICS 204 Date/Time: 8/12/2018 2216 hrs							

ICS 205 - INCIDENT RADIO COMMUNICATIONS PLAN

1. Incident Name: Carr Branches I, IV, V, and West Cont.		2. Date/Time Prepared Date: 08/12/2018 Time: 1830		3. Operational Period: Date To: 08/14/18 Time To: 0700					
4. Communications									
Ch#	Function	Name	Assigned To	Rx Freq	Rx Tone	Tx Freq	Tx Tone	Notes	
1	COMMAND	SHA CMD	ALL DIVISIONS	154.4300	136.5	159.0150	123.0 (T2)	(T2) BASS MTN	
2	COMMAND	SHA CMD T4	ALL DIVISIONS	154.4300	136.5	159.0150	136.5 (T4)	(T4) INSKIP MTN	
3	COMMAND	SHA CMD T14	ALL DIVISIONS	154.4300	136.5	159.0150	151.4 (T14)	(T14) HOADLEY MTN	
4	COMMAND	SHA CMD T15	ALL DIVISIONS	154.4300	136.5	159.0150	162.2 (T15)	(T15) SUGARLOAF MTN	
5	COMMAND	SHA CMD T9	ALL DIVISIONS	154.4300	136.5	159.0150	100.0 (T9)	(T9) BULLY CHOOP MTN	
6	A-G	A-G CDF T17	ALL DIVISIONS	159.3150	192.8	159.3150	192.8	A-G CDF TAC 17	
7	TACTICAL	VFIRE 23	DIV T/U/V/X	154.2950	156.7 (T6)	154.2950	156.7 (T6)		
8	TACTICAL	VFIRE 24	DIV M	154.2725	156.7 (T6)	154.2725	156.7 (T6)		
9	TACTICAL	VFIRE 25	DIV Y	154.2875	156.7 (T6)	154.2875	156.7 (T6)		
10	TACTICAL	VFIRE 26	DIV P/S	154.3025	156.7 (T6)	154.3025	156.7 (T6)		
11	TACTICAL	NIFC T5	CONTINGENCY	166.7250	131.8 (T3)	166.7250	131.8 (T3)		
12	TACTICAL	NIFC T6	DIV O	166.7750	131.8 (T3)	166.7750	131.8 (T3)		
13	TACTICAL	NIFC T7	DIV N	168.2500	131.8 (T3)	168.2500	131.8 (T3)		
14	TACTICAL	CDF T32	UNASSIGNED	151.2425	192.8 (T16)	151.2425	192.8 (T16)		
15	MEDICAL	CALCORD	ALL DIVISIONS	156.0750	156.7 (T6)	156.0750	156.7 (T6)	MEDICAL	
16	EMERGENCY	GUARD	ALL DIVISIONS	168.6250	0	168.6250	110.9	EMERGENCY USE ONLY	
17									
18									
19									
20	EMERGENCY	GUARD	ALL DIVISIONS	168.6250	0	168.6250	110.9	EMERGENCY USE ONLY	
5. Special Instructions									
6. Prepared by (Communications Unit Leader): Name: Tom Webb						Signature:			
ICS 205 - CONTROLLED UNCLASSIFIED INFORMATION/BASIC						Date/Time: 08/12/18 1830			

ICS 205 - INCIDENT RADIO COMMUNICATIONS PLAN

1. Incident Name: Carr

2. Date/Time Prepared Date: 08/12/2018 Time: 1830

3. Operational Period: Date From: 08/13/18 Date To: 08/14/18
Time From: 0700 Time To: 0700

Branches II, III, and Supp Repair

4. Communications		Ch#	Function	Name	Assigned To	Rx Freq	Rx Tone	Tx Freq	Tx Tone	Notes
1	COMMAND		SHA CMD	SHA CMD	ALL DIVISIONS	154.4300	136.5	159.0150	123.0 (T2)	(T2) BASS MTN
2	COMMAND		SHA CMD T4	SHA CMD T4	ALL DIVISIONS	154.4300	136.5	159.0150	136.5 (T4)	(T4) INSKIP MTN
3	COMMAND		SHA CMD T14	SHA CMD T14	ALL DIVISIONS	154.4300	136.5	159.0150	151.4 (T14)	(T14) HOADLEY MTN
4	COMMAND		SHA CMD T15	SHA CMD T15	ALL DIVISIONS	154.4300	136.5	159.0150	162.2 (T15)	(T15) SUGARLOAF MTN
5	COMMAND		SHA CMD T9	SHA CMD T9	ALL DIVISIONS	154.4300	136.5	159.0150	100.0 (T9)	(T9) BULLY CHOOPT MTN
6	A-G		A/G CDF T17	ALL DIVISIONS	ALL DIVISIONS	159.3150	192.8	159.3150	192.8	A-G CDF TAC 17
7	TACTICAL		CDF T26	DIV H / I	DIV H / I	159.2925	192.8 (T16)	159.2925	192.8 (T16)	
8	TACTICAL		CDF T27	DIV D / F	DIV D / F	159.3075	192.8 (T16)	159.3075	192.8 (T16)	
9	TACTICAL		CDF T28	FIRING GRP	FIRING GRP	151.1825	192.8 (T16)	151.1825	192.8 (T16)	
10	TACTICAL		CDF T29	UNASSIGNED	UNASSIGNED	151.3475	192.8 (T16)	151.3475	192.8 (T16)	
11	TACTICAL		CDF T30	DIV B / C	DIV B / C	151.3925	192.8 (T16)	151.3925	192.8 (T16)	
12	TACTICAL		VTAC11	UNASSIGNED	UNASSIGNED	151.1375	156.7 (T6)	151.1375	156.7 (T6)	
13	TACTICAL		VTAC12	DIV A	DIV A	154.4525	156.7 (T6)	154.4525	156.7 (T6)	
14	TACTICAL		VTAC13	SUP. REPAIR	SUP. REPAIR	158.7375	156.7 (T6)	158.7375	156.7 (T6)	
15	MEDICAL		CALCORD	ALL DIVISIONS	ALL DIVISIONS	156.0750	156.7 (T6)	156.0750	156.7 (T6)	MEDICAL
16	EMERGENCY		GUARD	ALL DIVISIONS	ALL DIVISIONS	168.6250		168.6250	110.9	EMERGENCY USE ONLY
17										
18										
19										
20	EMERGENCY		GUARD	ALL DIVISIONS	ALL DIVISIONS	168.6250		168.6250	110.9	EMERGENCY USE ONLY

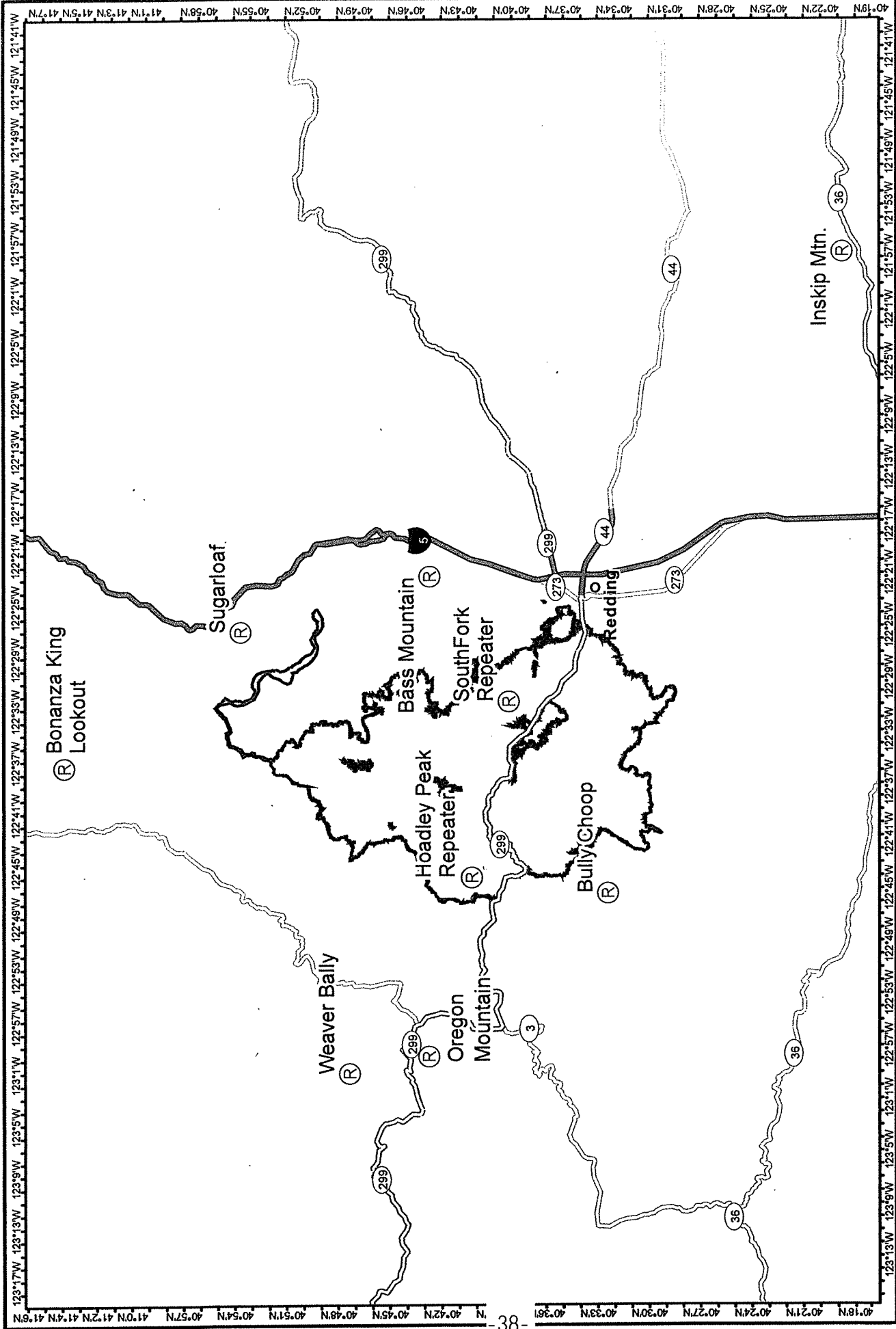
5. Special Instructions

6. Prepared by (Communications Unit Leader): Name: Tom Webb
Signature: *Tom Webb*

ICS 205 - CONTROLLED UNCLASSIFIED INFORMATION/BASIC
Date/Time: 08/12/18 1830

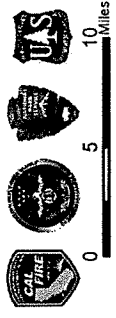
ICS 205 - INCIDENT RADIO COMMUNICATIONS PLAN

1. Incident Name: Carr SHU/SHF IA		2. Date/Time Prepared Date: 08/12/2018 Time: 1830		3. Operational Period: Date To: 08/14/18 Time To: 0700				
4. Communications								
Ch#	Function	Name	Assigned To	Rx Freq	Rx Tone	Tx Freq	Tx Tone	Notes
1	SHU L	SHU L T1	CALFIRE SHU	151.1600	136.5	159.2700	110.9	(T1) BUNCHGRASS
2	SHU L	SHU L T2	CALFIRE SHU	151.1600	136.5	159.2700	123.0	(T2) SOUTH FORK
3	SHU L	SHU L T3	CALFIRE SHU	151.1600	136.5	159.2700	131.8	(T3) HOADLEY
4	SHU L	SHU L T4	CALFIRE SHU	151.1600	136.5	159.2700	136.5	(T4) LATOUR
5	SHF	SHF T1	SHF	171.5750	0	165.0125	110.9	(T1) BONANZA KING
6	SHF	SHF T7	SHF	171.5750	0	165.0125	167.9	(T7) BULLY CHOOP
7	SHF	SHF T10	SHF	171.5750	0	165.0125	107.2	(T10) SUGAR LOAF
8	RDN F-1	RDN F1	REDDING CITY	154.3250	0	153.7700	136.5	
9	RDN TAC 1	RDN T1	REDDING TAC	154.2050	0	154.2050	0	
10	TACTICAL	CDF A/G 2	AIR TO GRND	159.2625	192.8 (T16)	159.2625	192.8 (T16)	
11	TACTICAL	CDF T9	TAC	151.3850	192.8 (T16)	151.3850	192.8 (T16)	
12	TACTICAL	CDF T1	TAC	151.2575	192.8 (T16)	151.2575	192.8 (T16)	
13	TACTICAL	CDF T11	TAC	151.4450	192.8 (T16)	151.4450	192.8 (T16)	
14	TACTICAL	CDF T12	TAC	151.4600	192.8 (T16)	151.4600	192.8 (T16)	EMERGENCY USE ONLY
15	MEDICAL	CALCORD	MEDICAL	156.0750	156.7 (T6)	156.0750	156.7 (T6)	
16	EMERGENCY	GUARD	EMERGENCY	168.6250	0	168.6250	110.9	
17								
18								
19								
20	EMERGENCY	GUARD	EMERGENCY	168.6250	0	168.6250	110.9	
5. Special Instructions								
6. Prepared by (Communications Unit Leader): Name: Tom Webb			Signature: <i>Tom Webb</i>					
ICS 205 - CONTROLLED UNCLASSIFIED INFORMATION/BASIC			Date/Time: 08/12/18 1830					



- ⊙ Camp
- ▣ Incident Command Post
- Drop Point

Communication Map
Carr Fire
 CA-SHU-007808

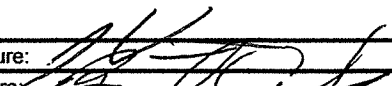
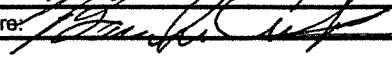


Carr Fire
 CA-SHU-007808
COMMS
 Aug 12, 2018

AIR OPERATIONS SUMMARY ICS-220

Incident Name and Incident Number CARR INC CASHU007808				Time Prepared 2000 Shutdown 2039				Date Prepared Sunday, August 12, 2018 Operational Period - Date Monday, August 13, 2018				Prepared By T. Smith Operational Period - Time 0700-0700	
Sunrise 619	Start 649	Cutoff 1939	Sunset 2009	Helibase Information Name: Mountain Gate HB 40° 42.30 122° 20.46 Name: Weaverville HB 40° 42.82 122° 55.33 (use page 2 if needed)				TFR Information Request # A-363 Radius: Polygon NM Altitude: 11000' MSL Centerpoint: N/A Lat Long NOTAMS: 8/6755 Frequency 118.075 http://tfr.faa.gov/tfr2/list.html				Rescue Ship Information Day C-101 Name (530) 966-6189 Phone (805) 540-0334 Make/Model UH-1H Location Mountain Gate Request Procedure for These Aircraft: RDD HH-60	
General Remarks, Safety Notes, Hazards, Air Operations Special Equipment, etc. TRACK ALL DIPSITE LOCATIONS / NUMBER OF DIPS / GALLONS TAKEN. TRACK ALL DROP LOCATIONS / NUMBER OF DROPS / GALLONS DROPPED ALL GPS DATA TO BE COLLECTED IN DEGREES, MINUTES, DECIMAL MINUTES FORMAT. AVOID Aerial Application of Retardant / Foam / Agent within 300' of Waterways, Bodies of Water, etc. If Retardant / Foam / Agent is Dropped Within These Areas Immediately Notify the AOBDD and Provide the Following Information: Lat / Long, Estimated Number of Gallons and a Map Detailing The Area.	TX	Tone	AM / FM	Name	Phone	Name	Phone	Name	Phone	Name	Phone	Name	Phone
Frequencies	RX	Tone	TX	AM / FM	Position	Name	Phone	Position	Name	Phone	Position	Name	Phone
AIR TACTICS	163.5750		163.5750	FM	AOBD	T. Stepanovich	(323) 819-5369						
AIR / AIR Rotary Wing	118.0750		118.0750	AM	ASGS	M. Hill	(530) 859-1087					T. Smith	(530) 864-5040
AIR / AIR - Briefing	118.7250		118.7250	AM	HEBM	P. York/J. Collins	(530) 386-2147					G. Bell	(408) 799-4196
AIR / GROUND	159.3150	192.8 (16)	159.3150	FM	ATGS	S. Brockman	(530) 277-2888					N. Clements	(619) 742-8428
SHA CMD (COMMAND)	154.4300	136.5 (4)	159.0150	FM	HLCO	A. Lujan	(530) 925-0934						
CMD 2	151.2650	103.5 (8)	159.3300	FM	HLCO	R. Gonzales	(530) 605-6376						
TOLC Sky Ranch	123.0250		123.0250	AM	HLCO	R. Yniguez	(530) 515-4440						
DECK Sky Ranch	163.1000		163.1000	FM	AAML	T. Shiffer	(650) 245-1715						
TOLC Weaverville	118.0250		118.0250	AM	Guard							168.625	Emergency
DECK Weaverville	168.3500		168.3500	FM	CALCORD							156.075	156.7 (6)
HELICOPTERS (Use page 2 if Needed)													
IA #	Type	Make/Model	Helibase	Avail	Start	Remarks / A - #	FAA #	Type	Make/Model	Helibase	Avail	Start	Remarks / A - #
N988B	3	206L4	Mountain Gate	700	800	A-44	G-821	1	UH-60	Mountain Gate	700	800	A-356
N242BH	3	206L1	Mountain Gate	700	800	A-105	G-826	1	UH-60	Mountain Gate	700	800	A-370
N913RL	3	B206	Mountain Gate	700	800	A-242							
C-101	2	UH-1H	Mountain Gate	700	800	A-375 Day Hoist IA	G-841	1	UH-60	RDD	24hr	24hr	A-245 (24hr Hoist ALS)
N205TK	2	B205++	Mountain Gate	700	800	A-41							
N3276T	2	UH-1H	Mountain Gate	700	800	A-141 Restricted							
N940AA	1	UH-60	Mountain Gate	700	800	A-38							
509	1	Cobra	Mountain Gate	700	800	A-62							
N4035S	1	S-64	Weaverville	700	800	A-5							
N6962R	1	S-64	Weaverville	700	800	A-16							
N9122Z	2	212	Weaverville	700	800	A-95 Std w crew							
N623PD	3	ASTAR	Weaverville	700	800	A-43							
N90301	3	206	Weaverville	700	800	A-208							TRINITY MRB
FIXED WING (Use Page 2 if Needed)													
FAA #	Type	Make/Model	Base	Avail	Start	Remarks	FAA #	Type	Make/Model	Base	Avail	Start	Remarks

MEDICAL PLAN (ICS 206)

1. Incident Name: CARR INCIDENT		2. Operational Period: Date From: 08/13/2018 Time From: 07:00		Date To: 08/14/2018 Time To: 07:00			
3. Medical Aid Stations:		MEDICAL UNIT LEADER: (408) 710-7196		COMMUNICATIONS UNIT: (530) 949-6816			
Name	Location	Contact Number(s)/Frequency	Paramedics on Site?				
MERT	BASE CAMP (BY CDC SLEEPING AREA)	(530) 310-0716	RN & PA				
EXPEDITORS	ANDERSON FAIRGROUNDS (NEAR BRIEFING)	—	NONE				
FRONTLINE MEDICAL	RED BLUFF FAIRGROUNDS	(530) 604-8380	PARAMEDICS				
4. Transportation (indicate air or ground):							
Ambulance Service	Location	Contact Number(s)/Frequency	Level of Service				
MERCY MEDIC 115 (GROUND)	LAKEHEAD	SHASTA COMMAND	ALS				
TRINITY MEDIC 8	FAIRVIEW MARINA, TRINITY COUNTY	SHASTA COMMAND	ALS				
REACH AIRSHIP 5	1524 East St. Redding	(877) 939-6300	RN				
PHI AIR MED	5900 Old Oregon Trail Redding	(800) 597-9571	RN				
CHP 14 & 16 (HOIST)	2651 Gold Street (Benton Airpark), Redding	(530) 225-2040	ALS / HOIST				
CALFIRE COPTER 101 (HOIST)	MOUNTAIN GATE HELIBASE	(530)680-4631	BLS DAY HOIST				
NATIONAL GUARD 841	REDDING MUNI HELIBASE	(805)540-0334	24 HOUR ALS HOIST				
5. Hospitals:							
Hospital Name	Address, Latitude & Longitude if Helipad	Contact Number(s)/ Frequency	Travel Time		Trauma Center	Burn Center	Helipad
			Air	Ground			
SHASTA REG MED CTR MED 2	1100 BUTTE ST, REDDING 40° 35.106'N, 122° 23.268'W	(530) 244-5400 468.025 Tx, 468.025 Rx PL 5	10 MIN	29 MIN	YES LEVEL: 3	NO	YES
MERCY MED CTR MED 4	2175 ROSALINE AVE, REDDING 40° 34.332'N, 122° 23.796'W	(530) 225-7201 468.075 Tx, 463.000 Rx PL 5	10 MIN	29 MIN	YES LEVEL: 2	NO	YES
UC DAVIS MED 6	2315 STOCKTON BLVD SACRAMENTO 38° 33.360'N, 121° 27.330'W	(916) 734-2011 446.525 Tx, 203.5 Rx	1.25 HOUR	3.5 HOUR	YES Level: 1	YES	YES
TRINITY HOSPITAL WEAVERVILLE	60 EASTER AVENUE WEAVERVILLE N40° 44.275' W122°56.359'	(530)623-5541 x1	20 MIN	45 MIN	NO	NO	YES
6. Special Medical Emergency Procedures:			BASE CAMP EMERGENCY: CONTACT COMMUNICATIONS UNIT AT: (530) 949-6816 report patient complaint/condition and location. Medical Staff will respond to stabilize incident <ul style="list-style-type: none"> • COMMUNICATIONS Unit contacts: <ol style="list-style-type: none"> 1. Operations 2. Medical 3. Safety 4. Logistics INJURY REPORTING PROCEDURES CHIEF COMPLAINT _____ LOCATION OF PATIENT _____ TRANSPORT REQUEST BY: AIR _____ GROUND _____ DIVISION _____ CREW _____ POINT OF PICKUP _____ LAT _____ LONG _____ IS EMT WITH THE PATIENT: YES _____ NO _____ AGE _____ SEX: MALE _____ FEMALE _____ **Pre-determined rendezvous location for transfer from rescue helicopter to ground ambulance or air ambulance: SKY RANCH HELIBASE** N 40°42.30 W 122°20.46 14324 Wonderland BLVD. REDDING, 96003				
LINE EMERGENCY: Crew Supervisor to contact Division Supervisor with patient complaint/condition, location, and resource needs. <ul style="list-style-type: none"> • Division Supervisor contacts and gives report on conditions, complaint/condition, and resource needs to: <ol style="list-style-type: none"> 1. Nearest Line FEMT/FEMP 2. Communications Unit • Emergency or Priority traffic received: Communication Unit will clear the command channel for emergency traffic only, for the duration of the MAJOR IWI • Communications Unit will make proper notifications • OPERATIONS can declare a MAJOR IWI based on the report on conditions from the division supervisor • Division Supervisor or designee will serve as point of contact (IWI SUPERVISOR) and run the emergency utilizing the <u>COMMAND CHANNEL</u> and <u>CALCORD</u> for the tac net during the IWI **ALL EMERGENCIES: Secure the area and identify witnesses for later investigation. Keep an accurate log of events** ***START 20 MINUTE TIMER IF IWI***							
7. Prepared by (Medical Unit Leader): Name: JESSE WINNEN			Signature: 				
8. Approved by (Safety Officer): BARAKA CARTER			Signature: 				
ICS 206	IAP Page _____	Date/Time: 08/12/2018 1848					



STRUCTURE DEFENSE GUIDE

STRUCTURE TRIAGE DECISION PROCESS (S-FACTS)

SURVIVAL

- Initial Assessment: can you survive here? **If not, LEAVE NOW!**
- Is there a Safety Zone nearby? **If not, LEAVE NOW!** (IRPG)
- Do you have a viable Escape Route?
- What is the decision point at which you will leave based on fire behavior and rate of spread?
- Is there a Temporary Refuge Area (TRA) on site? **If not, LEAVE NOW!**
 - Preplanned area for immediate, temporary refuge
 - Use of fire shelter should not be necessary
 - Is there a viable Escape Route to the TRA or Safety Zone?
- Is "Prep and Go" tactic an option?
- Do you have communications with your supervisor and adjoining forces?
- If safety issues cannot be mitigated, **LEAVE NOW!**

FIRE ENVIRONMENT

- Can you survive based on current and expected fire behavior? **If not, LEAVE NOW!**
- Look up, Look Down, Look Around Indicators:
 - Fuels (characteristics, moisture, temperature)
 - What will the intensity of the fire be when it arrives?
 - How long will it take to consume the fuels?
 - Wind
 - Current speed/direction
 - Expect changing winds
 - Terrain
 - Are you in a chute, chimney, or saddle? **If yes, LEAVE NOW!**
 - Is wind in alignment with topography?
 - What is your position relative to topography?
 - Are you mid slope or on top of a ridge?
 - Atmospheric Stability
 - Fire Behavior (requires constant monitoring)
 - Spotting, crowning, sheeting, rate of spread?
 - Flame length and height?
- Other weather considerations:
 - What is the current relative humidity?
 - Is there an expected change?
 - Are thunderstorms forecasted?

ACCESS

- Is access compatible with time and distance factors necessary to utilize as an Escape Route to a Safety Zone?
 - Road surface adequate for speed necessary?
 - Adequate width?
 - Turnaround/turnouts?
 - Bridges within limits for fire apparatus?
 - Drainage ditches/culverts?
 - Steep grades?
 - Is there a safe place to spot apparatus?

CONSTRUCTION/CLEARANCE

- Does the structure have adequate defensible space, based on topography, fuels, and current and expected fire behavior?
- Can defensible space problems be mitigated quickly?
- Will building materials and yard clutter compromise safety?
- Is the construction wood siding or shake shingle roof?
- Are there vent openings, open eaves, large glass windows facing fire front, decks with vegetation below?
 - Will ember intrusion through attic or foundation vents be a problem?
- What are the contents in the garage and outbuildings?
- Are there hazardous materials present?
- Are there propane tanks, fuel tanks, or power lines?
- Is there an adequate water supply nearby?
- Are additional resources needed to mitigate issues?
- Consider "Prep and Go" or "Prep and Defend" tactics

TIME CONSTRAINTS

- Is there time for an adequate size up of the structure defense problem?
- Is there time to mitigate safety concerns?
- Is there time and adequate resources to properly prepare and defend the structure?
- Is there time to escape, utilizing Escape Routes, to a Safety Zone? **If not, LEAVE NOW!**

STAY OR GO

- Tactical decision based on the S-FACTS
- Is it safe to stay? If no, utilize "Check and Go" tactic
- Is there time to prepare the structure for defense and what will the fire behavior be when the fire gets here?
- "Prep and Go" or "Fire Front Following" tactics should be used when it is not safe to "Prep and Defend"

STRUCTURE TRIAGE CATEGORIES

Not-Threatened

- Safety Zone nearby and TRA present at structure
- Construction features/defensible space make the structure unlikely to ignite
- Residents may/may not have evacuated

Threatened Defensible

- Safety Zone nearby and TRA present at structure
- Construction features/defensible space require structure defense tactics during fire front impact
- Residents may/may not have evacuated

Threatened non-Defensible

- Lack of adequate Safety Zone nearby
- Structure cannot be safely defended
- Residents must be evacuated

ENTRAPMENT AVOIDANCE

- Are you adhering to the **10 Standard Firefighting Orders?** (IRPG)
- Have you considered the **18 Situations that Shout Watch Out?**
- Have you considered the **Common Denominators of Fire Behavior on Tragedy Fires?** (IRPG)
- Are you maintaining **LCES?** (IRPG)
- Look Up, Look Down, Look Around (IRPG)
- Have Decision Points ("Trigger Points") been established?
- Conduct Risk Management (IRPG)
 - Situational Awareness – Hazard Assessment – Hazard Control – Decision Point – Evaluate

FIRING OPERATION CHECKLIST

Location: _____

Date: _____

Time: _____

Firing Supervisor _____

1. Personnel Briefing

- Objectives
- Conditions (fire environment)
- Resource assignments identified
 - Firing personnel
 - Holding forces
 - Lookouts
- Ignition plan/sequence
- Communication Plan
- Contingency Plan
- Safety issues

2. Go / No-Go

- All personnel briefed
- Weather forecast reviewed
- Resources in place
- Lookouts posted as needed
- Anchor and termination firing points identified
- Communications systems in place
- Fire behavior forecast reviewed
- Escape routes and safety zones established and made known
- Adjoining forces/Air Attack notified

3. Approval Prior To Firing

- Division Supervisor
- Branch Director
- Operations

4. Other Notifications

- Other: _____
- Other: _____

Attach Firing Operations Checklist to ICS-214

Rev: Ops Group February 8, 2011-43-



CARR FIRE

CA-SHU-007808

FINANCE MESSAGE

- Finance Section is located in Fusaro Building
 - Please come by the Time Unit and start your and update your FC-33
 - Vendors please drop off your agreements to the Time Unit
 - Shift Tickets need to be completed by line supervisor and turned and the end of each shift.
 - All injuries need to be reported to the COMP / CLAIMS Unit
 - All property Damage must be reported and documented
 - Please report any Vehicle Damage this includes Rental Vehicles
 - Local Government please check in with OES
 - Federal Time: Timekeeper on site.
 - **OFF-SITE FEEDING IS NOT APPROVED**
 - Water usage report needs to be turned in daily to the COMP / CLAIMS Unit
-
- **This fire is under Cost Apportionment**
 - **All DIVS, OPBD, STAM need to debrief with the Cost Apportionment Team Daily**
 - Cost Apportionment is located in the trailer directly across from Fusaro Hall

INCIDENT BILLING INFORMATION

CAL FIRE – SHASTA / TRINITY UNIT

875 CYPRESS AVE.
Redding Ca. 96001

Index Code: 2400

E-fund Billing Code: 013860

Federal P Coc' - - PPL1A6 (1502) [P]

STATE OF CALIFORNIA
 DEPARTMENT OF FORESTRY AND FIRE PROTECTION
PROPERTY CERTIFICATION OF LOCATION OR DAMAGE
CERTIFICATE OF RESPONSIBILITY FOR INCIDENT OCCURRENCE
 CAL FIRE-101 page 1 of 2 (1/07)

Incident Number:
Request Number:

DOC. NUMBER:

LOCATION / INCIDENT NAME:	INCIDENT NUMBER:	UNIT:	REGION:	DATE:
THE FOLLOWING ARTICLES WERE: (broken, left on line, damaged, or other)				DATE OF OCCURRENCE:

QUANTITY	UNIT OF MEAS.	CAL FIRE STOCK NUMBER <small>(COMPLETE WHENEVER ASSIGNED)</small>	DESCRIPTION <small>(INDICATE SIZE, MAKE, MODEL, TYPE, ETC., TO CLEARLY DESCRIBE THE ITEM, PROVIDE ADEQUATE DATA TO EFFECTIVELY IDENTIFY EQUIPMENT OR PROPERTY.)</small>	PROPERTY NUMBER

DIV: _____ **DIV's Name:** _____

DIV Signature: _____
 Attention Division Group Supervisors, by signing you are authorizing the above items to be replaced by the Supply Unit and/or Fire.

LOCATION OF ITEMS: _____

REMARKS: _____

SIGNATURE OF PERSON CERTIFYING OCCURRENCE AS DESCRIBED			
SIGNATURE:	PRINTED NAME:	TITLE:	DATE:

UNIT SUPERVISOR'S APPROVAL		
COMMENTS:		
SIGNATURE OF UNIT ADMINISTRATOR:	TITLE:	DATE:



WATER USAGE REPORT

DATE: _____

Division / Group: _____

AGENCY ID / VENDOR: _____

I.e.. Strike Team 1110C, Acme Water Tenders

REQUEST # _____

TURN INTO FINANCE DAILY

WATER SOURCE LOCATION	Hydrant	Open source i.e. pond	Tank	Gallons Used	Property Owner / Contact Number if known **

****Please note if you made contact with property owner and their contact.**

(Use reverse side if needed.)

Information: _____

The intent of this document is intended to track, record and validated the amount of water used on a incident. It's not intended to review the performance of equipment using the water on an incident.

SHIFT TICKET EXAMPLE

EMERGENCY SHIFT TICKET and EVALUATION FORM					Contractor Name			
Incident or Project Name LILAC INC		Incident Number CAMVU024612	Request Number E#		DOZER DUDE			
Agreement Number XXX - 000000 - 00					Operator #1 BOB SMITH	Operator #2 TOM SMITH		
Equipment Make CAT		Equipment Model / Type D6XM			Operator Furnished By: <input checked="" type="checkbox"/> Contractor <input type="checkbox"/> Government			
Serial Number FULL VIN#		Licence Number 1234567			Operating Supplies Furnished By: <input checked="" type="checkbox"/> Contractor <input type="checkbox"/> Government			
Equipment Use					Equipment Status			
Date	Start	Stop	Work	(Circle) Hours Days / Miles	<input checked="" type="checkbox"/> Inspected <input type="checkbox"/> Under Agreement			
Mo / Day				Assignment	<input type="checkbox"/> Released by Government <input type="checkbox"/> Withdrawn by Contractor			
12/8	0700	2400	17	DIV M	2 OPERATORS			
12/9	0001	0700	7	DIV M				
Vendor Rating					Govt. Rep. Name and Position - PRINT			
		Poor*	Avg.	Good	Exc.	N/A		
Met Performance Expectations		Vendor Rating must be done.			Mike Weber			
Equipment in Safe Working Condition					Govt. Rep. Signature		<i>Mike Weber</i>	
Operator Skill Level					Contractor Signature		<i>Bob Smith</i>	
Operates Safely					Date		Time	
Operator's Cooperation Level					08/04/15		0800	
Overall Performance								
* NOTE: Any rating of POOR requires an explanation in Comment Section.					CALFIRE 297			
**Final evaluation or for more documentation, use an ICS Form 230 or equivalent.					(Rev 3-2011)			
Pink - Finance		Blue - Home Unit HE Coordinator		Yellow - Vendor		White - Govt Representative		

EMERGENCY SHIFT TICKET and EVALUATION FORM					Contractor Name			
The responsible Government Officer will complete this form each shift					DUDE TRANSPORT			
Incident or Project Name LILAC INC		Incident Number CAMVU 024612	Request Number E #		BOB SMITH TOM SMITH			
Agreement Number XXX - 000000 - 00					Operator #1 BOB SMITH			
Equipment Make TRANSPORT/ KENWORTH		Equipment Model / Type COZAD TRAILER /26 WHEELS			Operator #2 TOM SMITH			
Serial Number 1XP3ESMP14239012		Licence Number 9999999			Operator Furnished By: <input checked="" type="checkbox"/> Contractor <input type="checkbox"/> Government			
Equipment Use					Operating Supplies Furnished By: <input checked="" type="checkbox"/> Contractor <input type="checkbox"/> Government			
Date	Start	Stop	Work	(Circle) Hours Days / Miles	Equipment Status			
Mo / Day				Assignment	<input checked="" type="checkbox"/> Inspected <input type="checkbox"/> Under Agreement			
12/8	0700	2400	17	DIV M	<input type="checkbox"/> Released by Government <input type="checkbox"/> Withdrawn by Contractor			
12/9	0001	0700	7	DIV M	2 OPERATORS			
Vendor Rating					Govt. Rep. Name and Position - PRINT			
		Poor*	Avg.	Good	Exc.	N/A		
Met Performance Expectations		Vendor Rating must be done.			Mike Weber			
Equipment in Safe Working Condition					Govt. Rep. Signature		<i>Mike Weber</i>	
Operator Skill Level					Contractor Signature		<i>Bob Smith</i>	
Operates Safely					Date		Time	
Operator's Cooperation Level					08/04/15		0800	
Overall Performance								
* NOTE: Any rating of POOR requires an explanation in Comment Section.					CALFIRE 297			
**Final evaluation or for more documentation, use an ICS Form 230 or equivalent.					(Rev 3-2011)			
Pink - Finance		Blue - Home Unit HE Coordinator		Yellow - Vendor		White - Govt Representative		

Turn shift tickets into Finance.

SHIFT TICKET EXAMPLE

EMERGENCY SHIFT TICKET and EVALUATION FORM					Contractor Name	
Incident or Project Name LILAC INC			Incident Number CAMVU 024612	Request Number E or S # Here	Operator #1 BOB SMITH	
Agreement Number XXX - 000000 - 00					Operator #2 Operator Furnished By:	
Equipment Make FREIGHTLINER			Equipment Model / Type WATER TENDER 2500+ TYPE 1		<input checked="" type="checkbox"/> Contractor <input type="checkbox"/> Government	
Serial Number LAST 8 OF VIN#			Licence Number 55555555		<input checked="" type="checkbox"/> Contractor <input type="checkbox"/> Government	
Equipment Use (Circle) Hours Days / Miles					Operating Supplies Furnished By:	
Date Mo / Day	Start	Stop	Work	Assignment	<input checked="" type="checkbox"/> Contractor <input type="checkbox"/> Government	
12/8	0001	0700	7	OFF SHIFT	Equipment Status	
12/8	0700	1900	12	BASE CAMP	<input checked="" type="checkbox"/> Inspected <input checked="" type="checkbox"/> Under Agreement	
12/8	1900	2400	5	OFFSHIFT	Released by Government	
					Withdrawn by Contractor	
					Remarks/Comments ** ONE OPERATOR	
Vendor Rating					Govt. Rep. Name and Position - PRINT Mike Weber	
					Govt. Rep. Signature <i>Mike Weber</i>	
Met Performance Expectations					Contractor Signature <i>Bob Smith</i>	
Equipment in Safe Working Condition					Date 08/04/15	
Operator Skill Level					Time 0800	
Operates Safely					CALFIRE 297 (Rev 3-2011)	
Operator's Cooperation Level						
Overall Performance						
* NOTE: Any rating of POOR requires an explanation in Comment Section.						
**Final evaluation or for more documentation, use an ICS Form 230 or equivalent.						
Pink - Finance		Blue - Home Unit HE Coordinator		Yellow - Vendor		White - Govt Representative

EMERGENCY SHIFT TICKET and EVALUATION FORM					Contractor Name	
The responsible Government Officer will complete this form each shift						
Incident or Project Name LILAC INC			Incident Number CAMVU 024612	Request Number E OR S # Here	Operator #1 BOB SMITH	
Agreement Number XXX - 000000 - 00					Operator #2 BILL SMITH	
Equipment Make PETERBUILT			Equipment Model / Type WATER TENDER 2500 + TYPE 1		<input checked="" type="checkbox"/> Contractor <input type="checkbox"/> Government	
Serial Number LAST 8 OF VIN#			Licence Number 99999999		<input checked="" type="checkbox"/> Contractor <input type="checkbox"/> Government	
Equipment Use (Circle) Hours Days / Miles					Operating Supplies Furnished By:	
Date Mo / Day	Start	Stop	Work	Assignment	<input checked="" type="checkbox"/> Contractor <input type="checkbox"/> Government	
12/8	0700	2400	17	DIV M	Equipment Status	
12/9	0001	0700	7	DIV M	<input checked="" type="checkbox"/> Inspected <input checked="" type="checkbox"/> Under Agreement	
					Released by Government	
					Withdrawn by Contractor	
					Remarks/Comments ** 2 OPERATORS	
Vendor Rating					Govt. Rep. Name and Position - PRINT Mike Weber	
					Govt. Rep. Signature <i>Mike Weber</i>	
Met Performance Expectations					Contractor Signature <i>Bob Smith</i>	
Equipment in Safe Working Condition					Date 08/04/15	
Operator Skill Level					Time 0800	
Operates Safely					CALFIRE 297 (Rev 3-2011)	
Operator's Cooperation Level						
Overall Performance						
* NOTE: Any rating of POOR requires an explanation in Comment Section.						
**Final evaluation or for more documentation, use an ICS Form 230 or equivalent.						
Pink - Finance		Blue - Home Unit HE Coordinator		Yellow - Vendor		White - Govt Representative

Turn shift tickets into Finance.



PUBLIC INFORMATION SECTION



Incident Information Line: (530) 225-2510
Incident Media Line: (530) 448-2466

Email Updates (sign up):
www.tinyurl.com/carrfire

STATUS	
Incident Start Date: 7/23/2018	Incident Start Time: 1:15 PM
Cause: Mechanical Failure of Vehicle	Acres:
Containment:	Total Personnel:

MEDIA – The California State Penal Code Section 409.5(d) allows the news media to enter scenes of disaster, riot or civil disturbance. Properly identified members of the news media should not be restricted from entering locations specified within the code. However, this does not include crime scenes, private property and does not imply that the news media may interfere with incident operations while they are in the areas of concern. More information can be found [here](#).



CAL FIRE SOCIAL MEDIA POLICY – When assigned to a CAL FIRE incident, you will adhere to the CAL FIRE Social Media Policy, Section 0691. You can find further information about the CAL FIRE Social Media Policy [here](#).



PHOTOGRAPHS AND VIDEOS OF INCIDENT – We are in a new era of media. Media no longer means news/broadcast industry, but now refers to anyone that has the capability to shoot video, photographs and post them onto social media sites in a matter of minutes. Unfortunately, we have seen some instances of photographs or videos that have depicted unsafe, unprofessional or embarrassing circumstances which are a serious breach of ethics. When this happens, it reflects poorly on all that are attached to this incident. Posting an inappropriate video, photo or blog comment could expose oneself to unwanted ramifications. It may be unsafe to shoot photos or video and a firefighter who is concentrating on a camera loses their situational awareness.

The Public Information Office would like copies of the video and pictures that you safely took while not in an emergency situation, fire suppression activity or in an overhead assignment. Bring your video and pictures to the Public Information trailer; they will be reviewed and possibly uploaded to our many CAL FIRE social media sites. Remember, we don't want photographs or videos that depict unsafe, unprofessional or embarrassing circumstances, which are a serious breach of ethics.

LOST AND FOUND – The Information Section will manage lost and found items for the incident. If you have lost an item please leave your contact information and what you have lost at the Information Section. If you have found an item on the incident, bring the item to the Information Section with your contact information as well.

MAIL SERVICE – The Information Section can assist you with sending and receiving mail. The address is Shasta District Fairgrounds 1890 Briggs St. Anderson CA. 96007

DEMOBILIZATION INSTRUCTIONS

CARR

CA-SHU-007808

DEMOB PROCEDURES

- CHECK THE DEMOB LIST EACH MORNING. YOU CAN FIND THE DEMOB LIST THROUGH THE "QR" CODE ON THE I.A.P. COVER OR ON LISTS POSTED THROUGHOUT CAMP. **ONLY REPORT TO DEMOB AT YOUR SCHEDULED TIME.** EARLY ADMITTANCE WILL NOT BE ALLOWED.
- **FLIGHT ARRANGEMENTS MUST BE MADE 48HRS PRIOR TO RELEASE.**
- REPORT TO DEMOB AT APPOINTMENT TIME TO RECEIVE A CHECKOUT FORM (ICS-221), THEN GO TO THE FOLLOWING UNITS TO OBTAIN THE NECESSARY SIGNATURES:
 - ✓ SUPPLY UNIT
 - ✓ COMMUNICATIONS UNIT
 - ✓ GROUND SUPPORT/VEHICLE INSPECTION***
 - ✓ DOCUMENTATION UNIT
 - ✓ TIME UNIT
 - ✓ TRAINING UNIT (IF APPLICABLE)
 - ✓ ACCOMMODATIONS (IF APPLICABLE)

***VEHICLE INSPECTION:

- THE DEMOB UNIT WILL INFORM YOU IF THE VEHICLE NEEDS TO BE INSPECTED.
- YOU MUST HAVE THE ICS-221 DEMOB FORM WITH YOU AT VEHICLE INSPECTION.
- A VEHICLE INSPECTION TIME WILL BE PROVIDED WHEN YOU INITIALLY ARRIVE TO THE DEMOBILIZATION UNIT.
- **DO NOT REPORT FOR VEHICLE INSPECTION PRIOR TO YOUR APPOINTMENT**

HAVE YOUR EQUIPMENT INVENTORY CARD READY WHEN HEADING TO VEHICLE INSPECTION.

RETURN THE COMPLETED ICS-221 FORM TO THE DEMOB UNIT AND TRAVEL HOME SAFE!



Peer Support Team Message:

CARR INCIDENT PEER SUPPORT: (916) 591-9004

The gravity of this event is large. Many of us have been impacted by the events that have occurred as well as past incidents.

A peer support team has been assembled and Peers are available at the ICP. The Peer Support contact number is (916)-591-9004, which is available 24/7.

Some of the signs and symptoms you may be experiencing include, but are not limited to:

Irritability, lack of sleep, quick to anger, withdrawal, above average tobacco use, an increase in negative coping mechanisms such as excessive alcohol and/or substance abuse. You might experience lack of appetite, isolate yourself, and various other unexplained responses to normal every day events.

You may not be experiencing these symptoms now or during this fire incident. However, you may find yourself experiencing them when you return to your home or unit. You may find yourself being triggered by a past event that has impacted you, while assigned to future incidents. A sight, sound, smell, or touch could trigger a memory that previously existed, but you may not have been aware of.

If you find yourself in this situation and need to talk to someone contact your Employee Assistance Program (EAP). EAP programs are here to help. It is important to be able to talk to someone and get stuff off your chest vs carrying this around for your career.

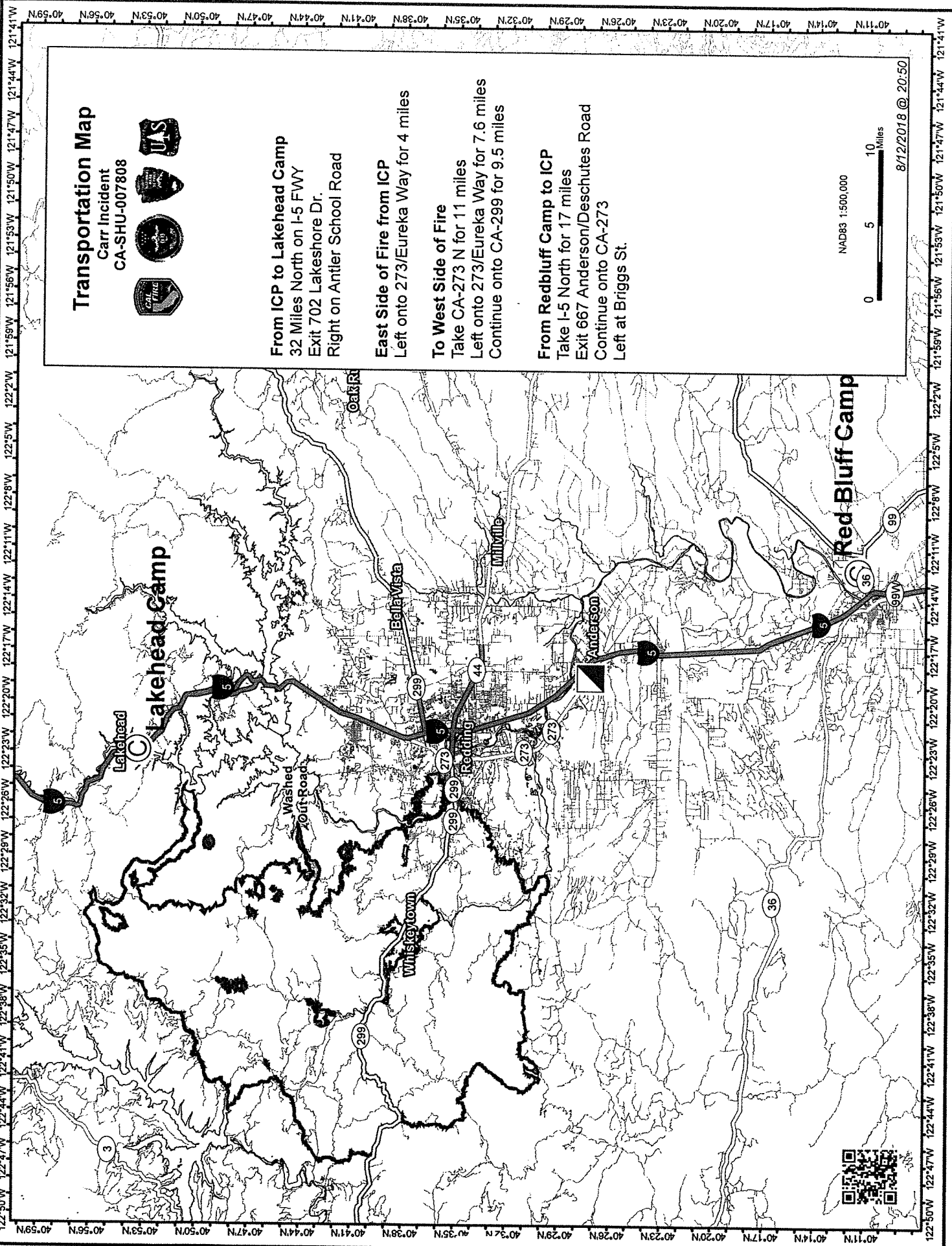
Cultural and Historic Properties: Fireline Guidance for the Carr Fire Shasta and Trinity Counties, CA

Do not compromise safety for the protection and preservation of archaeological and historic properties. When possible however:

1. Be on the lookout for prehistoric and historic archaeological sites. These sites typically occur adjacent to springs, streams, and rivers but can occur in other areas as well. Prehistoric sites in this area include scatters of chipped stone flakes, circular depressions in the ground, and/or localized areas of dark soil. Gold Rush era historic mining sites include shallow test pits, horizontal adits, and vertical shafts, rock tailing piles, and/or water ditches. Late 19th century copper mining sites in the NE incident area include mine adits on the mountain sides, smelter-remains and home/cabin sites for workers near the Sacramento River, and aerial tramway towers (and cable) in between. Historic homestead sites marked by stone foundations, rock chimneys, wells, ditches, and/or old fruit trees can be found throughout the incident area. Several historic cemeteries are present as well.
2. Known sites will be flagged with pink and black striped or red and white striped plastic flagging tape. Note that much of the area has never been surveyed for archaeological resources and many sites out there have yet to be discovered or flagged.
3. If you observe archaeological resources, flagged or unflagged, attempt to avoid with ground disturbing activities altogether.
4. If avoidance is not possible, minimize ground disturbance. Use a hand crew rather than a dozer to remove fuels from control lines that must cross site areas if possible.
5. Leave all artifacts in place as they may have been intentionally placed there for religious or ceremonial reasons.
5. Note locations of discovered resources on a map. Better yet take site coordinates with a GPS. Leave information for the archaeologist with the Plans Unit so that the sites can be relocated and protected during Fire Suppression Repair. Use flagging to mark site.
6. If you encounter a burial or other human remains, cease ground disturbing work in the area and contact the archaeologist immediately.

Your help preserving California's non-renewable cultural resources is appreciated.

Richard Jenkins
CAL FIRE Northern Region Archaeologist
rich.jenkins@fire.ca.gov
Cell: (530) 949-8822



Transportation Map

Carr Incident
CA-SHU-007808



From ICP to Lakehead Camp
32 Miles North on I-5 FWY
Exit 702 Lakeshore Dr.
Right on Antler School Road

East Side of Fire from ICP
Left onto 273/Eureka Way for 4 miles

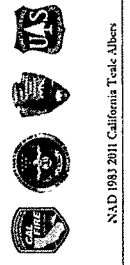
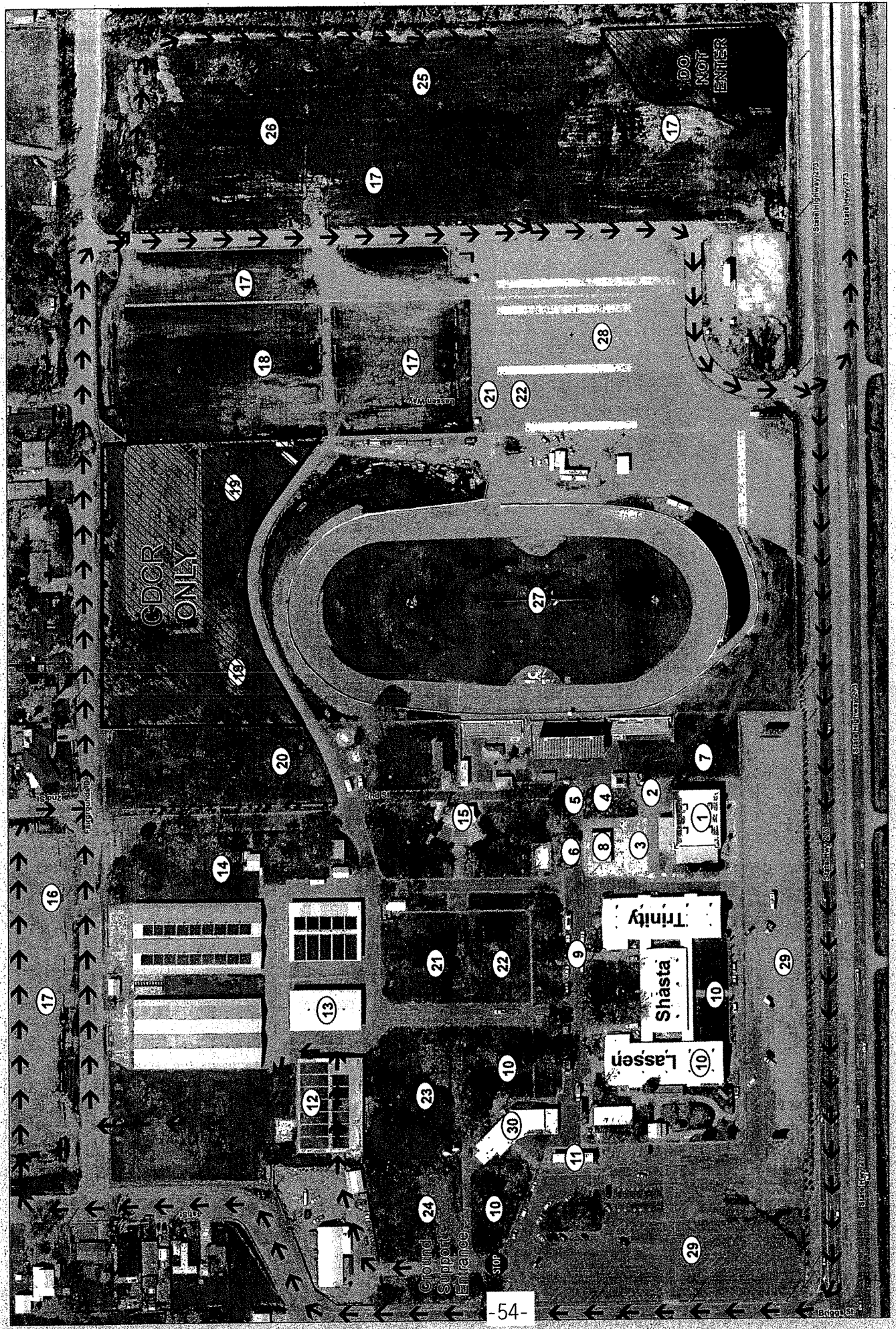
To West Side of Fire
Take CA-273 N for 11 miles
Left onto 273/Eureka Way for 7.6 miles
Continue onto CA-299 for 9.5 miles

From Redbluff Camp to ICP
Take I-5 North for 17 miles
Exit 667 Anderson/Deschutes Road
Continue onto CA-273
Left at Briggs St.

NAD83 1:500,000



8/12/2018 @ 20:50



Facilities Map CARR INCIDENT CA-SHU-7808

- | | | | | | |
|--------------------------|-------------------|--------------------|-----------------------|---------------------|-----------------------|
| 1. Check-in/Finance | 6. IC | 11. PIO | 16. Lunches/Water/Ice | 21. Laundry | 26. Transport Parking |
| 2. Logistics- Facilities | 7. GIS | 12. Ground Support | 17. Engine Parking | 22. Showers | 27. Crew Sleeping |
| 3. Communications | 8. Accommodations | 13. Supply | 18. CDCR Parking | 23. Mobile Sleepers | 28. Crew Parking |
| 4. Safety/OPS | 9. OES | 14. Kitchen | 19. CDCR | 24. CCC Sleeping | 29. Overhead Parking |
| 5. Liason | 10. Crew Sleeping | 15. Briefing | 20. MERT | 25. Fuel | 30. Rehab Lounge |

NAD 1983 2011 California Teal Albers


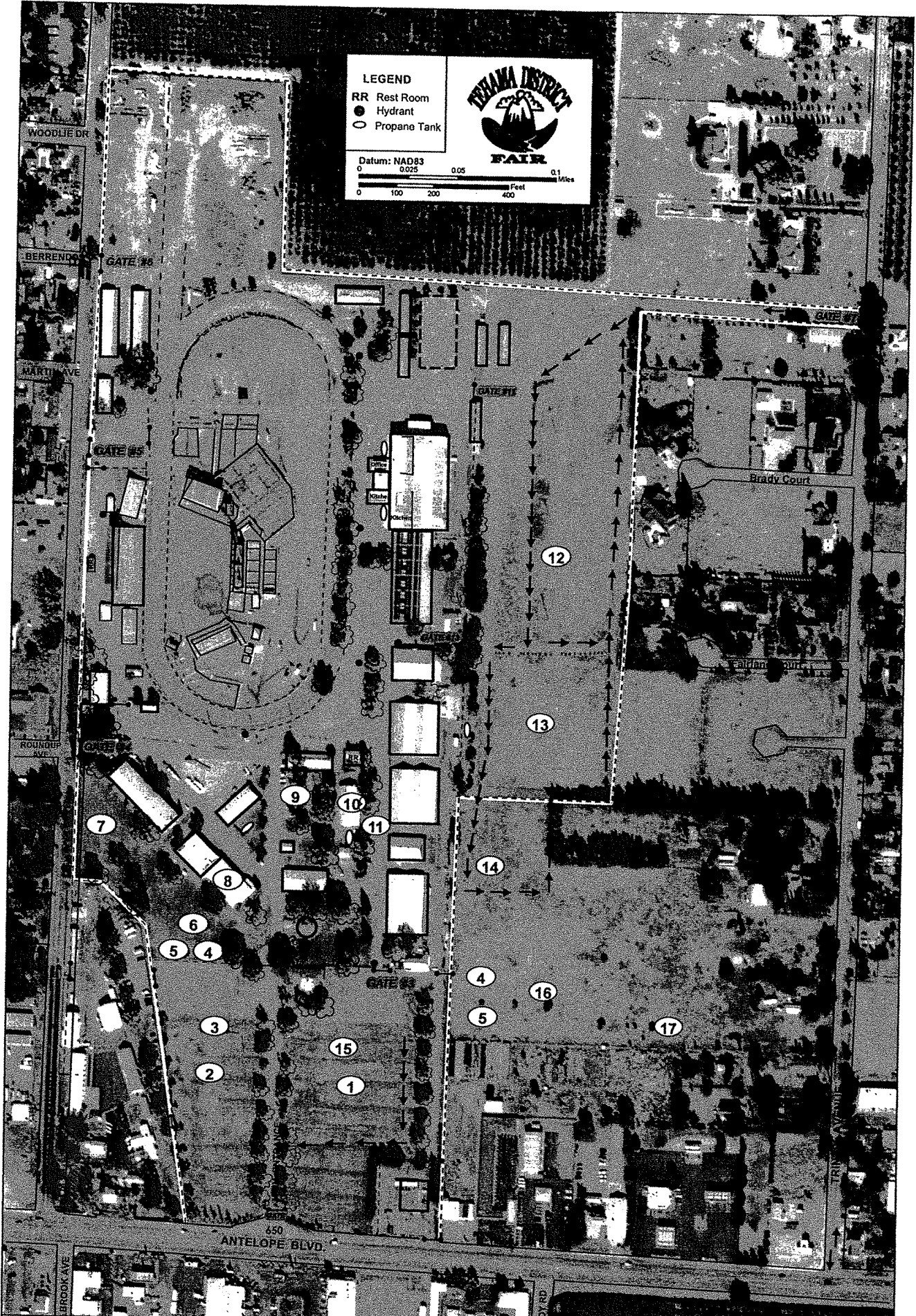


LEGEND

- RR Rest Room
- Hydrant
- Propane Tank

Datum: NAD83
0 0.025 0.05 0.1 Miles

0 100 200 400 Feet

- 1. Engine Fuel
- 2. Engine Overhead Parking
- 3. Ice/Water/Lunches
- 4. Laundry
- 5. Showers
- 6. Tent W/AC Sleeping
- 7. Personnel Tents
- 8. LDGS
- 9. Food
- 10. Supply
- 11. Medical
- 12. National Guard Fuel
- 13. National Guard Parking
- 14. Kitchen
- 15. Engine Parking
- 16. Tents
- 17. Smaller Trailers
- *Laundry/Showers Available to All

Facilities Map
CA - INCIDENT
 -55-
 CA 001-HU-7808





- 1. Parking 5. Facilities 9. Lunch/Ice/Water
- 2. Laundry 6. Kitchen 10. Additional Parking
- 3. Showers 7. Dining Hall 11. Fuel
- 4. Sleeping 8. Supply 12. Tent Sleeping

Facilities Map
Lakehead Camp
CARR INCIDENT
CA-SHU-7808





CARR INCIDENT LOGISTICS MESSAGE



SERVICES SCHEDULE

Breakfast:	0500-1000
Dinner:	1700-2200
Sack Lunch Distribution:	0500-2100
Laundry Service:	0500-2300
Supply:	0600-2200
Saw Shop:	0600-2200
Showers:	0600-2300
Fuel:	24hr Service

FUEL TRUCK LOCATIONS

Interstate Oil:	Incident Base
Cross Petroleum:	Incident Base
Mean Gene Gas:	Red Bluff
Redding Oil:	Lewiston, DP 24
SST Oil Truck #2:	French Gulch, DP 30
Ed Staubs and Son:	Lakehead

REFRIDGERATION TRUCKS and HYDRATION STATIONS (ICE, WATER and GATORADE)

- DP 17, Igo Ono Elementary School
- DP 24, Lewiston
- DP 30, French Gulch
- DP 55, Division "C"

**THIS PAGE
INTENTIONALLY
LEFT BLANK**

