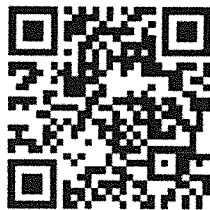


# Carr

## INCIDENT

#CA-SHU-007808

## INCIDENT ACTION PLAN



**OPERATIONAL PERIOD**

**8/15/2018**

**to**

**8/16/2018**



# INCIDENT OBJECTIVES (ICS 202)

<b>1. Incident Name:</b> Carr	<b>2. Operational Period:</b>	Date From: 8/15/2018	Date To: 8/16/2018
		Time From: 0700	Time To: 0700

**3. Objective(s):**

- Management Objectives**
- Provide for public and emergency personnel safety at all times
  - Provide for timely and accurate release of incident information to the public, media, first responders, agency administrators and cooperators
  - Protect and defend property, improvements, infrastructure; economic, natural, cultural, and heritage resources in the fire area
  - Identify, process, and coordinate the safe repopulation and re-entry of affected communities in an efficient and timely manner
  - Foster and maintain relationships; ensure coordination and communication with all stakeholders, adjoining jurisdictions and cooperating agencies
  - Manage the incident in a cost-efficient manner
- Control Objectives**
- Keep the fire North of Cottonwood Creek to Highway 36
  - Keep the fire South of Dog Creek Rd
  - Keep the fire East of Deer Lick Springs Rd to Highway 3 to Highway 299 to Trinity Dam Blvd
  - Keep the fire West of Interstate 5

**General Situational Awareness:**

- ENSURE AND MAINTAIN EFFECTIVE COMMUNICATIONS WITH CARR COMMUNICATION AT ALL TIMES INCLUDING USING PROPER NAMING CONVENTION.**
- Steep and rugged terrain, critically dry and receptive fuel beds.
- Critical fire weather conditions continue again for today due to hot, dry unstable weather conditions including locally gusty winds.
- Hydration/ Nutrition/ Fatigue: drink water, eat, and rest when necessary and appropriate.
- Re-energized power transmission lines: Be aware that lines may be live.

5. Site Safety Plan Required?                                  Yes  No

Approved Site Safety Plan(s) Located at:

**6. Incident Action Plan**

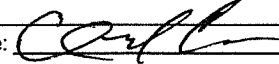
<input checked="" type="checkbox"/> ICS 203	<input checked="" type="checkbox"/> ICS 215A	<input type="checkbox"/> Phone List	<input type="checkbox"/> Fire Suppression Repair Plan
<input checked="" type="checkbox"/> ICS 204	<input checked="" type="checkbox"/> ICS 220	<input checked="" type="checkbox"/> Training Message	<input checked="" type="checkbox"/> POI Message
<input checked="" type="checkbox"/> ICS 205	<input checked="" type="checkbox"/> Incident Map	<input checked="" type="checkbox"/> Travel Map	<input checked="" type="checkbox"/> OES Message
<input checked="" type="checkbox"/> ICS 206	<input checked="" type="checkbox"/> Weather Forecast	<input checked="" type="checkbox"/> Demob Plan	<input checked="" type="checkbox"/> NIFC FTP access path to maps
<input checked="" type="checkbox"/> ICS 208	<input checked="" type="checkbox"/> Fire Behavior	<input checked="" type="checkbox"/> Finance Message	<input checked="" type="checkbox"/> ICS 214

**7. Prepared By:** Mike Petro                                  Position/Title: PSC                                  Signature:

**8. Approved by Incident Commander:** Mike Van Loben Sels                                  Signature:

ICS 202

## ORGANIZATION ASSIGNMENT LIST (ICS 203)

<b>1. Incident Name:</b> Carr		<b>2. Operational Period: Date From:</b> 8/15/2018 Time From: 0700		<b>Date To:</b> 8/16/2018 Time To: 0700	
<b>3. Incident Commander(s) and Command Staff:</b>			<b>7. Operation Section:</b>		
IC/UC's	B.Gouvea/ G. Bertelli (T)		Chief	S. Crawford/ A. McBath (T) Day	
Deputy	M. Van Loben Sels/ S.Spinharney (T)/ B. Newburn (T)		Deputy	T. Brownell	
Safety Officer	B. Carter/ A. Stornetta (T)		Night Ops	F. Berbena	
Information Officer	E. Smith/ B. Mercado (T)				
	J. Clingsmith (T)		<b>Branch</b>	<b>I</b>	<b>E. Darnall</b>
Liaison Officer	T.Crawford/ C. Dugger/		Division/Group	T/U/V/X/Y	A. Sanchez
	D. Pender/ B.Smith (T)		Division/Group		
<b>4. Agency/Organization Representatives:</b>			<b>Branch</b>	<b>II</b>	<b>E. Darnall</b>
Trinity County SO	M.Mandolfo		Division/Group	A	R. Valles
Sierra Pacific Industries	N.Kroncki		Division/Group	B/C	J. Peter
Shasta County SO	A.Bertain		Division/Group		
County Roads Dept.	(530) 225-5661		<b>Branch</b>	<b>III</b>	<b>B. Noel</b>
Cal OES AREP	P.Titus/ D. Franklin		Division/Group	D/F	M. Wallen (9230C)
PG&E	M. Weaver		Division/Group	H/I	M.Bertrand (T)/ D. Boic
CDCR	M.Ahlin		Division/Group	M	D. Boic
CCC	K. McDonald/ S. Borowski		Division/Group		
State Parks	A. Wright		<b>Branch</b>	<b>IV</b>	<b>M. Fields</b>
CHP	S. Fredrick		Division/Group	N	C. Martinelli
Red Cross	R. Yoder		Division/Group	O	J. Keown
WAPA	B. Adams		Division/Group	HERO Group	D. Sykes
BLM	J. Mata		<b>Branch</b>	<b>V</b>	<b>A. Latta (T)</b>
NPS	B. Love		Division/Group	P/S	B. Lanning
<b>5. Planning Section:</b>			Division/Group		
Chief	M. Petro		<b>Branch</b>	<b>Supp Repair</b>	<b>B. Rowe (12Hr)</b>
Deputy	C. Carrera		Division/Group	Redding Group	M. Rosan (12Hr)
Resource Unit	Carlos/Corey/Reneau/Weber(T)/Elward(T)		Division/Group	Lakehead Group	B. Rodgers (12Hr)
Situation Unit	E. Scovel / R. DeCamp		Division/Group	Shasta Group	T. Lucas (12Hr)
Documentation Unit	J.Patterson		Division/Group	Trinity Group	J. Washburn (12Hr)
Demobilization Unit	T. Shevenell/ A. Klem		Division/Group	Ono Group	D. Dresselhaus (12Hr)
GISS	T. Werle/ E. Tumbleson (T)/ K. Towers		Division/Group	Baer Group	D. Havlina(12Hr)
FBAN	D.Boursier		Division/Group		
IMET	R. Walbrun/ S. Nelaimischkies (T)		<b>Branch</b>		
Training Tech Spec	D. Randolph		Staging Area	Anderson	S.Bidwell (T)
Hired Equipment Tech	D. Grandbois		Staging Area	Lakehead	J. Price (T)
<b>6. Logistics Section</b>			<b>Air Operations Branch</b>		<b>Director:</b> T. Stepanovich
Chief	J. Morris			Air Support Grp Sup	M.Hill/ T. Smith (T)
Deputy	C. White			Helibase Manager	P. York
Supply Unit	L. Srory/ M. Brabo (T)				
Facilities Unit	J. Guerra/ B. Little (T)				
<b>8. Finance/Administration Section:</b>					
Ground Support Unit	P. Mock/ J. Wilson		Chief	J. Franklin	
Communications Unit	T. Webb		Deputy	B. Counts	
Medical Unit	J. Winnen		Time Unit	S.Thompson	
Motel Tech Spec	M. Aldrich/ S. Vaquero		Procurement Unit	C. Craig/ T. Meyers	
Ordering Manager	A. Gettman/ J. Tompkins		Comp/Claims Unit	M. Boone	
Food Unit	M. Mondragon		Cost Unit	S. Cain	
<b>Prepared By: Name:</b>	Chris Carrera	<b>Position/Title:</b>	PSC	<b>Signature:</b>	
<b>ICS 203</b>		<b>Date/Time:</b>	8/14/2018 2216 hrs		





**Fire Weather Forecast**

*Sven Nelaimischkies*

**FORECAST NO:** 21  
**PREDICTION FOR:** DAY/NIGHT SHIFT  
**SHIFT DATE:** August 15, 2018  
**TIME/DATE ISSUED:** August 14, 2018 2000 PDT

**NAME OF FIRE:** Carr  
**UNIT:** CA-SHU  
**SIGNED:** Sven Nelaimischkies  
**Incident Meteorologist (t)**

**WEATHER DISCUSSION:**

Smoke will continue to be an inhibiting factor day by day as normal diurnal wind pattern remains. Through the week normal weak afternoon into evening southerly upslope winds will transition overnight into the mornings to northerly down slope/down river drainage flow. The strongest northerly overnight/morning flows will be down the Shasta river into Shasta Lake. Increased mid level moisture flowing into the region will bring a slight chance of thunderstorms north of the fire. A trough of low pressure will move through the area later Thursday, bringing a little stronger southerly winds ahead of it.

**WEATHER FORECAST FOR WEDNESDAY:**

**WEATHER:** Smoke and Haze, becoming partly cloudy in the afternoon. Continued warm and dry. South winds increasing after 1500 hours.

**MAX TEMPERATURES:** 89-97°F (32-36°C). (Neutral trend.)

**MIN HUMIDITY:** 14-22%. (Neutral trend.)

**20-FOOT WIND:**

**VALLEY -** Downslope/down valley 2-5mph (3-8 km/h) early becoming upslope/upvalley 2-4 mph with gusts to 8 mph (3-6 km/h gust 13 km/h) after 1200.

**MIDSLOPES/RIDGETOP-** North winds 3-6 gust 8 mph (5-10 gust 13 km/h) before 1100 Becoming south to 3-7 gust 11 mph (5-19 gust 20km/h) after 1400.

**HAINES INDEX:** 4 **INVERSION:** Weak to moderate inversion breaking after 1300

**WEDNESDAY NIGHT:**

**WEATHER:** Increasing smoke otherwise clear with moderate RH recovery.

**MIN TEMPERATURES:** 57-67°F (14-19°C). (Neutral Trend)

**MAX HUMIDITY:** 40-60% (Neutral Trend)

**20-FOOT WIND:**

**SLOPE/VALLEY -** Downslope/down valley 2-5 mph (3-8 km/h) after 2200.

**RIDGETOP -** North 2-4 mph.

**EXTENDED FORECAST:**

**THURSDAY:** Mostly sunny becoming partly cloudy. Haze and smoke. Max temps...89-97°F (31-36°C). Min RH 12-22%. Diurnal terrain driven winds for midslopes and valleys. South winds during the afternoons with night time north/northwest drainage winds remaining fairly light, and slightly stronger in the Shasta river/Lake Shasta drainage. Winds will be slightly stronger Thursday afterternoon ahead of an approaching trough.

**FRIDAY THROUGH SUNDAY:** Mostly sunny. Haze and smoke. Max temps...92-100°F (33-38°C). Min RH 12-22%. Diurnal terrain driven winds for midslopes and valleys. South winds during the afternoons with night time north/northwest drainage winds remaining fairly light, and slightly stronger in the Shasta river/Lake Shasta drainage. Haines indices will be stable as well with a more stable upper pattern over the region, becoming more unstable towards mid week.

**SAFETY THOUGHT:** Increased down river flow onto Shasta Lake will cause variable winds late nights into the mornings, especially on Div P by the lake. Increasing smoke in the lighter diurnal winds will decrease visibility into the week.

# FIRE BEHAVIOR FORECAST

FORECAST NUMBER: 21	TYPE OF FIRE: Wildland Fire
FIRE NAME: CARR	OPERATIONAL PERIOD: 24hr 8/15 (0700-0700)
DATE ISSUED: 08/14	TIME ISSUED: 2100
UNIT: SHU	SIGNED: D. Boursier FBAN/LTAN

## INPUTS

**WEATHER SUMMARY**

**\*\*Hot and Dry with light and variable winds\*\***  
See Weather Forecast in IAP.

## OUTPUTS

**GENERAL:** **Transition to fuels and topography driven activity.**

Hazards throughout the fire area include: interior green islands and slopes, ash pits, fire weakened trees, dust devils, and roll-out.

New starts will see rapid growth and establishment. Smoke columns will contribute to long range spotting.

In the absence of weather conditions outside the forecast or extreme fire behavior conditions expect:

	Max. Flame Length	Max. Rate of Spread	Spotting	Probability of Ignition
Grass	< 5' (1.5m)	40 ch/hr (1.2 km/hr)	< ½ mile (.8 km)	89%
Grass/Shrub Mix	< 5' (1.5m)	20 ch/hr (.6 km/hr)	< ½ mile (.8 km)	89%
Timber Understory	< 8' (2.5m)	10 ch/hr (.2 km/hr)	< ¾ mile (1.2 km)	89%
Timber Litter	< 3' (1m)	5 ch/hr (.1 km/hr)	< ¼ mile (.4 km)	89%

**\*\*minimum safety zone size for brush fuels is ¾ acre (.3 Ha) for a Strike Team of Engines.**

### SPECIFIC:

#### Branch I, II & III

Creeping and smoldering activity. Dormant heat areas may flare with air movement. Interior islands and green slopes with Southwest wind exposure alignment may see activity. Torching and short crown runs may occur with preheating or steeper terrain. Expect most activity to occur as afternoon winds increase. Roll-out and spotting potential across established lines. Keep alert to unburned islands, fire weakened trees, ash pits, and dust devils.

#### Branch IV and V

Predominately surface fire spread. Expect areas with understory preheating via slash piles, fuel jackpots or topography to transition into canopy. Interior Torching and short crown runs possible. Smoke shading may temper fire behavior. Look for areas of fuels treatment, timber harvest or previous fire activity for safety or control objectives. Roll-out and spotting potential across established lines. Anticipate locations above drainages to be susceptible spotting areas. Overnight inversion locations above 3,000' will see fire activity continue with lower humidity and warmer temperatures.

### AIR OPERATIONS:

I-5 Corridor should remain smoked in for majority of burn period (Div. O and P).  
Mixing height: 7,500 ft. AGL, Transport winds: SW 10 mph, Sunrise 0620, Sunset 2010.

### SAFETY

Thermal changes near water features may cause erratic and often unpredictable fire behavior.

# SAFETY MESSAGE/PLAN (ICS 208)

INCIDENT NAME:

CARR FIRE CA-SHU-007808

Operational Period: Date From: 8/15/18

Date to: 8/16/18

Time From: 0700

Time to: 0700

**"If it's Predictable, it's Preventable"** *Gordon Graham*

## MAJOR HAZARDS AND RISKS

### Driving

- Drive defensively!!!
- Water dusty roads throughout fire area
- Use appropriate speeds
- Develop traffic plans
- Communicate on tactical channels when driving on one lane roads
- HWY 299 will open during this shift to the public, use extra caution when working in the area.

### Hazard Trees/SNAGS

- Eliminate hazards with qualified sawyers or heavy equipment
- Secure the area with hazard flagging
- Communicate hazards to others
- Avoid the area when possible

### Fatigue/Complacency

- Stay alert and engaged to maintain situational awareness
- Continuously learn and adapt to new challenges
- Be alert for signs of fatigue and take breaks as necessary

### Dehydration/Nutrition

- Drink plenty of fluids throughout the day
- Balance electrolyte drinks at a 3:1 water to sport drink ratio
- Address dehydration concerns immediately upon symptom onset
- After strenuous work, continue drinking to replace fluid losses
- Eat when appropriate
- Pack food with you if you will be away from your equipment for extended durations

### Communications

- Ensure all messages are received and understood
- There are firefighters from all over the country and world assisting, use proper terminology and give more details when needed
- Only use assigned channels

### Stump Holes/Ash Pits

- Can cause serious burns and injuries
- Wear all PPE
- Flag hazardous areas and communicate
- Watch for stumps that have been smoldering for multiple days

### Boat/Water Safety

- A briefing on the watercraft shall occur prior to departure
- PFD's will be worn within 10' of the water line
- Watercraft transportation is available after dark for emergencies only
- A weather forecast shall be obtained prior to launching
- Follow manufacturer recommendations for safe operation

### Powerline Safety

- When in doubt, treat all powerlines as energized
- Follow **Power Line Safety** guidelines (IRPG pg. 24)

Prepared By: Anthony Stornetta

Position/Title: SOF1(T)

Signature: *A. Stornetta*

ICS 208

IAP Page

Date/Time: 8/14/18 1-5-18

# LINE EMERGENCY REPORTING PROCEDURES

- Declare a "LINE EMERGENCY" on the COMMAND CHANNEL.
  
- Identify:
  - TYPE \_\_\_\_\_
  - SEVERITY \_\_\_\_\_
  - POINT OF CONTACT \_\_\_\_\_
  
- Identify resource needs, i.e., ambulance, hoist, REMS, Law Enforcement, etc.
  
- Provide COMMUNITIONS the following information:
  - CHIEF COMPLAINT: \_\_\_\_\_
  - LOCATION OF PATIENT: \_\_\_\_\_
  - TRANSPORTATION REQUEST BY: AIR \_\_\_ GROUND \_\_\_
  - DIVISION \_\_\_\_\_ CREW \_\_\_\_\_
  - POINT OF PICKUP \_\_\_\_\_
  - LAT \_\_\_\_\_ LONG \_\_\_\_\_
  - IS EMT WITH THE PATIENT: YES \_\_\_ NO \_\_\_
  - AGE \_\_\_\_\_
  - SEX: MALE \_\_\_ FEMALE \_\_\_

**\*\*ALL EMERGENCIES: Secure the area and identify witnesses for later investigation. Keep an accurate log of events\*\***

# ASSIGNMENT LIST (ICS 204)

<b>1. Incident Name:</b> <p style="text-align: center; margin: 5px 0;">Carr</p>	<b>2. Operational Period:</b> Date From: 08/15/18      Date To: 08/16/18 Time From: 0700          Time To: 0700	<b>3.</b>  Branch: <span style="float: right;">I</span>  Div/Group: <span style="float: right;">T/U/V/X/Y</span>  <span style="float: right; font-weight: bold;">Tango</span>
<b>4. Operations Personnel:</b> Operations Section Chief: <b>S. Crawford/ A. McBath (T) Day</b> <b>Night Ops: F. Berbena</b> Branch Director: <b>E. Darnall</b> Branch Safety: <b>C. Porter / M. Weidner (T) 12hr</b> Division/Group Supervisor: <b>A. Sanchez</b>		

5. Resources Assigned:		** Resources Below in Bold are 12 Hour **				Reporting Location, Special Equipment, Remarks, Notes, and Information	
Resource Identifier	ALS	Leader	Personnel	Request #	Time	Location	
STA OES 1821A		Nunez,scott	22	E-274	0700-0700	DP 17	
STC LNU 9146C		Heyfron, Mike	16	E-1155	0700-0700	DP 17	
/F TX 2		<b>Denzer, Randy</b>	<b>16</b>	<b>E-1224</b>	<b>0700-1900</b>	<b>DP 17</b>	
/F TX TF 4		<b>Brinkkoeter, Darren</b>	<b>18</b>	<b>E-1226</b>	<b>0700-1900</b>	<b>DP 17</b>	
V/T PVT E-124		Presidio, Linn	2	E-124	0700-0700	DP 17	
V/T PVT E-206		Holden, Jesse	2	E-206	0700-0700	DP 17	
V/T PVT E-399		Hubbard, Warren	2	E-399	0700-0700	DP 17	
V/T PVT E-893		Vargas, Richie	2	E-893	0700-0700	DP 17	
V/T PVT E-1156		Wooten, William	2	E-1156	0700-0700	DP 17	
EMP KENNEDY	ALS		1		0700-0700	DP 17	
<b>EMT BARLOW O-1027</b>		<b>Barlow, Larry</b>	<b>1</b>	<b>O-1072</b>	<b>700-0700</b>	<b>DP 17</b>	

**6. Work Assignments:**  
 backhaul garbage, hose, and water.  
 top up 500 feet or 100%.

**7. Special Instructions:**  
 identify for backhaul any hose and equipment in the fire perimeter.

8. Communications (radio and/or phone contact numbers needed for this assignment):							
Channel	Ch	Function	Rx Freq	Rx Tone	Tx Freq	Tx Tone	Notes
HA CMD	1	COMMAND	154.4300	136.5	159.0150	123.0 (T2)	(T2) BASS MTN
FIRE 23	7	TACTICAL	154.2950	156.7 (T6)	154.2950	156.7 (T6)	
ALCORD	15	MEDICAL	156.0750	156.7 (T6)	156.0750	156.7 (T6)	MEDICAL
A-G CDF T17	6	A-G	159.3150	192.8	159.3150	192.8	A-G CDF TAC 17
EMERGENCY	16	EMERGENCY	168.6250	0	168.6250	110.9	EMERGENCY USE ONLY

<b>Prepared by: Name:</b>	Jordan Weber	<b>Pos/Title:</b>	RESL(T)	<b>Signature:</b>
<b>ICS 204</b>	<b>Date/Time:</b> 8/14/2018		2216 hrs	



## ASSIGNMENT LIST (ICS 204)

<b>1. Incident Name:</b> <p style="text-align: center;">Carr</p>	<b>2. Operational Period:</b> Date From: 08/15/18      Date To: 08/16/18 Time From: 0700      Time To: 0700	<b>3.</b>  Branch: <span style="float: right;"><b>II</b></span>  Div/Group: <span style="float: right;"><b>B/C</b></span>  <span style="float: right;"><b>Bravo</b></span>
<b>4. Operations Personnel:</b> Operations Section Chief: <b>S. Crawford/ A. McBath (T) Day      Night Ops: F. Berbena</b> Branch Director: <b>E. Darnall</b> Branch Safety: <b>C. Porter / M. Weidner (T) 12hr</b> Division/Group Supervisor: <b>J. Peter</b>		

5. Resources Assigned:      ** Resources Below in Bold are 12 Hour **					Reporting Location, Special Equipment, Remarks, Notes, and Information Time      Location
Resource Identifier	ALS	Leader	Personnel	Request #	
TC NEU 9231C		Skehan, Brian	17	E-211	0700-0700      DP 55
TC SKU 9260C		<b>Stone, Jason</b>	<b>17</b>	<b>E-17</b>	<b>0700-1900      DP 55</b>
IF CARR #22		<b>R.Reid/T.Grant</b>	<b>18</b>		<b>0700-1900      DP 55</b>
DOZ PVT E-199		Salinas, Tony	4	E-199	0700-0700      DP 55
V/T PVT E-136		Torres, Bill	2	E-136	0700-0700      DP 55
V/T PVT E-353		Douglas, Jason	2	E-353	0700-0700      DP 55
V/T PVT E-391		Hasanbasic, Dino	2	E-391	0700-0700      DP 55
V/T PVT E-392		Funes, Anthony	2	E-392	0700-0700      DP 55
V/T PVT E-396		Dee Holmes	2	E-396	0700-0700      DP 55
V/T PVT E-1115		Clark, Steve	2	E-1115	0700-0700      DP 55
V/T PVT E-1166		Dempsey, Mike	2	E-1166	0700-0700      DP 55
V/T PVT E-1187		Kandarian, Mike	2	E-1187	0700-0700      DP 55
IRD PVT E-1248		<b>Murphy, Joe</b>	<b>1</b>	<b>E-1248</b>	<b>0700-1900      DP 55</b>
XC PVT E-1254		<b>Williams, Brandon</b>	<b>1</b>	<b>E-1254</b>	<b>0700-1900      DP 55</b>
ALM O-666		<b>Mendoza, Read</b>	<b>2</b>	<b>O-666</b>	<b>0700-1900      DP 55</b>

**6. Work Assignments:**  
 all hazard trees that will threaten control lines.  
 old fire in planned lines.  
 improve and hold control lines.  
 chop up 300 feet or 100%.  
 backhaul garbage, hose, and water.

**7. Special Instructions:**  
 identify for backhaul any hose and equipment in the fire perimeter.

**8. Communications** (radio and/or phone contact numbers needed for this assignment):


Name	Ch	Function	Rx Freq	Rx Tone	Tx Freq	Tx Tone	Notes
HA CMD	1	COMMAND	154.4300	136.5	159.0150	123.0 (T2)	(T2) BASS MTN
DF T30	11	TACTICAL	151.3925	192.8 (T16)	151.3925	192.8 (T16)	
ALCORD	15	MEDICAL	156.0750	156.7 (T6)	156.0750	156.7 (T6)	MEDICAL
CG CDF T17	6	A-G	159.3150	192.8	159.3150	192.8	A-G CDF TAC 17
UARD	16	EMERGENCY	168.6250	0	168.6250	110.9	EMERGENCY USE ONLY

<b>Prepared by: Name:</b>	Jordan Weber	<b>Pos/Title:</b>	RESL(T)	<b>Signature:</b>
<b>ICS 204</b>	<b>Date/Time:</b> 8/14/2018		2216 hrs	





## ASSIGNMENT LIST (ICS 204)

<b>1. Incident Name:</b> Carr		<b>2. Operational Period:</b> Date From: 08/15/18    Date To: 08/16/18 Time From: 0700    Time To: 0700			<b>3.</b>  Branch: <b>III</b> Div/Group: <b>H/I</b> <b>Hotel</b>		
<b>1. Operations Personnel:</b> Operations Section Chief: <b>S. Crawford/ A. McBath (T) Day</b> <b>Night Ops: F. Berbena</b> Branch Director: <b>B. Noel</b> Branch Safety: <b>R. Fisher / FEMP Sutton</b> Division/Group Supervisor: <b>M. Bertrand (T)/ D. Boic</b>							
<b>2. Resources Assigned:</b> <b>** Resources Below in Bold are 12 Hour **</b>							
Resource Identifier	ALS	Leader	Personnel	Request #	Reporting Location, Special Equipment, Remarks, Notes, and Information Time                      Location		
STC HUU 9120C		Lee, Bo	19	E-13	0700-0700	DP 32	
STC HUU 9121C		Murphy, Allison	17	E-681	0700-0700	DP 32	
STG TGU 9252G		Brown, Matt	35	C-7	0700-0700	DP 32	
<b>CRW SHF 15B</b>		<b>Fields, Dwayne</b>	<b>20</b>	<b>C-200012</b>	<b>0700-1900</b>	<b>DP 32</b>	
<b>CRW CNA TFA</b>		<b>Schlickheiser, John</b>	<b>109</b>	<b>C-9027</b>	<b>0700-1900</b>	<b>DP 32</b>	
V/T PVT E-131		Stanford, Brad	2	E-131	0700-0700	DP 32	
V/T PVT E-356		Miller, Tony	2	E-356	0700-0700	DP 32	
V/T PVT E-357		Ed	2	E-357	0700-0700	DP 32	
V/T PVT E-360		Miller, Jim	2	E-360	0700-0700	DP 32	
V/T PVT E-361		Debois, Scott	2	E-361	0700-0700	DP 32	
V/T PVT E-639		John Traumiller	2	E-639	0700-0700	DP 32	
V/T PVT E-640		Bendall, John	2	E-640	0700-0700	DP 32	
V/T PVT E-886		Newberry, Scott	2	E-886	0700-0700	DP 32	
V/T PVT E-1107		Hizey, Blake	2	E-1107	0700-0700	DP 32	
V/T PVT E-1117		Vieirs, Brandon	2	E-1117	0700-0700	DP 32	
<b>ALM O-93</b>		<b>Piercy, Dean</b>	<b>2</b>	<b>O-93</b>	<b>0700-1900</b>	<b>DP 32</b>	
<b>3. Work Assignments:</b> Climb up 300 feet or 100%. Backhaul garbage, hose, and water. Pull hose lays							
<b>4. Special Instructions:</b> Utilize W/T to water roads when not needed for suppression. Identify for backhaul any hose and equipment in the fire perimeter.							
<b>5. Communications</b> (radio and/or phone contact numbers needed for this assignment):							
Channel	Ch	Function	Rx Freq	Rx Tone	Tx Freq	Tx Tone	Notes
HA CMD	1	COMMAND	154.4300	136.5	159.0150	123.0 (T2)	(T2) BASS MTN
DF T26	7	TACTICAL	159.2925	192.8 (T16)	159.2925	192.8 (T16)	
ALCORD	15	MEDICAL	156.0750	156.7 (T6)	156.0750	156.7 (T6)	MEDICAL
A-G CDF T17	6	A-G	159.3150	192.8	159.3150	192.8	A-G CDF TAC 17
EMERGENCY	16	EMERGENCY	168.6250	0	168.6250	110.9	EMERGENCY USE ONLY
<b>6. Prepared by: Name:</b> Jordan Weber		<b>Pos/Title:</b> RESL(T)		<b>Signature:</b> 			
<b>ICS 204</b>		<b>Date/Time:</b> 8/14/2018		<b>2216 hrs</b>			

## ASSIGNMENT LIST (ICS 204)

<b>1. Incident Name:</b> Carr		<b>2. Operational Period:</b> Date From: 08/15/18    Date To: 08/16/18 Time From: 0700    Time To: 0700			<b>3.</b>  Branch: <b>III</b>  Div/Group: <b>M</b>  <b>Mike</b> <b>Page 1 of 2</b>		
<b>4. Operations Personnel:</b> Operations Section Chief: <b>S. Crawford/ A. McBath (T) Day    Night Ops: F. Berbena</b> Branch Director: <b>B. Noel</b> Branch Safety: <b>R. Fisher / FEMP Sutton</b> Division/Group Supervisor: <b>D. Boic</b>							
<b>5. Resources Assigned:</b>		<b>** Resources Below in Bold are 12 Hour **</b>			Reporting Location, Special Equipment, Remarks, Notes, and Information Time                      Location		
Resource Identifier	ALS	Leader	Personnel	Request #			
STC MRN 9150C	ALS	Overshiner, Todd	18	E-210	0700-0700	DP 37	
<b>STC TGU 9251C</b>		<b>Magana, Gerry</b>	<b>17</b>	<b>E-1</b>	<b>0700-1900</b>	<b>DP 37</b>	
T/F TX TF 1		Byers, David	17	E-1223	0700-0700	DP 37	
STG LMU 9223G		Luetke, Bryan	37	C-47	0700-0700	DP 37	
<b>CRW CNA TFC</b>		<b>Ruiz, Jennifer</b>	<b>118</b>		<b>0700-1900</b>	<b>DP 37</b>	
DOZ PVT E-52		Cattaneo, Angelo	2	E-52	0700-0700	DP 37	
DOZ PVT E-56		Caton, Jamie	2	E-56	0700-0700	DP 37	
DOZ PVT E-90		Stevenson, Tad	3	E-90	0700-0700	DP 37	
DOZ PVT E-91		George, Don	3	E-91	0700-0700	DP 37	
DOZ PVT E-409		Morrison, Matthew	2	E-409	0700-0700	DP 37	
W/T PVT E-127		Mayberry, Steve	2	E-127	0700-0700	DP 37	
W/T PVT E-128		Korbly, Eric	2	E-128	0700-0700	DP 37	
W/T PVT E-129		Dunne, Nick	2	E-129	0700-0700	DP 37	
W/T PVT E-130		Scovil, Peter	2	E-130	0700-0700	DP 37	
W/T PVT E-134		Anderson, Sandra	2	E-134	0700-0700	DP 37	
W/T PVT E-150		Pini, Tony	2	E-150	0700-0700	DP 37	
W/T PVT E-355		Shephard, Mitch	2	E-355	0700-0700	DP 37	
W/T PVT E-891		Kotterman, Dustin	2	E-891	0700-0700	DP 37	
<b>6. Work Assignments:</b> Hold fire in planned lines. Mop up 500 feet or 100%. Backhaul garbage, hose, and water.							
<b>7. Special Instructions:</b> Identify for backhaul any hose and equipment in the fire perimeter.							
<b>8. Communications</b> (radio and/or phone contact numbers needed for this assignment):							
Name	Ch	Function	Rx Freq	Rx Tone	Tx Freq	Tx Tone	Notes
SHA CMD	1	COMMAND	154.4300	136.5	159.0150	123.0 (T2)	(T2) BASS MTN
VFIRE 24	8	TACTICAL	154.2725	156.7 (T6)	154.2725	156.7 (T6)	
CALCORD	15	MEDICAL	156.0750	156.7 (T6)	156.0750	156.7 (T6)	MEDICAL
A-G CDF T17	6	A-G	159.3150	192.8	159.3150	192.8	A-G CDF TAC 17
GUARD	16	EMERGENCY	168.6250	0	168.6250	110.9	EMERGENCY USE ONLY
<b>9. Prepared by: Name:</b> Jordan Weber		<b>Pos/Title:</b> RESL(T)		<b>Signature:</b>			
<b>ICS 204</b>		<b>Date/Time:</b> 8/14/2018		<b>2216 hrs</b>			



# ASSIGNMENT LIST (ICS 204)

<b>1. Incident Name:</b> <b>Carr</b>		<b>2. Operational Period:</b> Date From: 08/15/18    Date To: 08/16/18 Time From: 0700    Time To: 0700			<b>3.</b>  Branch: <b>IV</b>  Div/Group: <b>N</b>  <b>November</b> <b>**24 hr**</b>		
<b>4. Operations Personnel:</b> Operations Section Chief: <b>S. Crawford/ A. McBath (T) Day</b> <b>Night Ops: F. Berbena</b> Branch Director: <b>M. Fields</b> Branch Safety: <b>R. Diaz / R. Booker 12hr</b> Division/Group Supervisor: <b>C. Martinelli</b>							
<b>5. Resources Assigned:</b>		<b>** Resources Below in Bold are 12 Hour **</b>			Reporting Location, Special Equipment, Remarks, Notes, and Information Time                                  Location		
Resource Identifier	ALS	Leader	Personnel	Request #			
STC TGU 9250C		<b>Emerick, Andy</b>	<b>18</b>	<b>E-16</b>	0700-0700	DP 33	
STG TGU 9253G		<b>Thomas, Luke</b>	<b>35</b>	<b>C-1</b>	0700-0700	DP 33	
DOZ TGU 2540		<b>Oliver, Kevin</b>	<b>3</b>	<b>E-47</b>	0700-0700	DP 33	
DOZ PVT E-55		<b>Schnetzer, Donald</b>	<b>2</b>	<b>E-55</b>	0700-0700	DP 33	
W/T PVT E-202		<b>Gold, Rich</b>	<b>2</b>	<b>E-202</b>	0700-0700	DP 33	
W/T PVT E-203		<b>Kiser, Kyle</b>	<b>2</b>	<b>E-203</b>	0700-0700	DP 33	
W/T PVT E-890		<b>Kotterman, Dustin</b>	<b>2</b>	<b>E-890</b>	0700-0700	DP 33	
W/T PVT E-1114		<b>Mori, Nathan</b>	<b>2</b>	<b>E-1114</b>	0700-0700	DP 33	
W/T PVT E-1116		<b>Esry, Jim</b>	<b>2</b>	<b>E-1116</b>	0700-0700	DP 33	
W/T PVT E-1119		<b>Carr, David</b>	<b>2</b>	<b>E-1119</b>	0700-0700	DP 33	
W/T PVT E-1157		<b>Anderson, Michelle</b>	<b>2</b>	<b>E-1157</b>	0700-0700	DP 33	
W/T PVT E-1161		<b>Johnson, Matt</b>	<b>2</b>	<b>E-1161</b>	0700-0700	DP 33	
W/T PVT E-1162		<b>Labow, Ron</b>	<b>2</b>	<b>E-1162</b>	0700-0700	DP 33	
W/T PVT E-1163		<b>Rotea, Andy</b>	<b>2</b>	<b>E-1163</b>	0700-0700	DP 33	
HEQB WATNER O-292		<b>Watner, Mike</b>	<b>1</b>	<b>O-292</b>	0700-0700	DP 33	
HEQB (T) WELCH O-660		<b>Welch, Anthony</b>	<b>1</b>	<b>O-660</b>	0700-0700	DP 33	
FEMP DOSH O-925	ALS	<b>Dosh, Jason</b>	<b>1</b>	<b>O-925</b>	0700-0700	DP 33	
FEMT GARCIA O-879		<b>Garcia, Robert A</b>	<b>1</b>	<b>O-879</b>	0700-0700	DP 33	
REMS XSJ 3		<b>Smith, Eric</b>	<b>4</b>	<b>O-803</b>	0700-0700	DP 33	
<b>6. Work Assignments:</b> Hold fire in planned lines. Improve and hold control lines. Prepare for firing operations. Mop up 300 feet or 100%. Backhaul garbage, hose, and water.							
<b>7. Special Instructions:</b> <b>***BR IV reasource will be supported out of Lakehead Camp following shift***</b> Identify for backhaul any hose and equipment in the fire perimeter.							
<b>8. Communications</b> (radio and/or phone contact numbers needed for this assignment):							
Name	Ch	Function	Rx Freq	Rx Tone	Tx Freq	Tx Tone	Notes
SHA CMD	1	COMMAND	154.4300	136.5	159.0150	123.0 (T2)	(T2) BASS MTN
NIFC T7	13	TACTICAL	168.2500	131.8 (T3)	168.2500	131.8 (T3)	
CALCORD	15	MEDICAL	156.0750	156.7 (T6)	156.0750	156.7 (T6)	MEDICAL
A-G CDF T17	6	A-G	159.3150	192.8	159.3150	192.8	A-G CDF TAC 17
GUARD	16	EMERGENCY	168.6250	0	168.6250	110.9	EMERGENCY USE ONLY
<b>9. Prepared by: Name:</b>		Jordan Weber	<b>Pos/Title:</b>		RESL(T)	<b>Signature:</b>	
<b>ICS 204</b>			<b>Date/Time:</b>		8/14/2018 2216 hrs		

# ASSIGNMENT LIST (ICS 204)

<b>1. Incident Name:</b> <p style="text-align: center;">Carr</p>	<b>2. Operational Period:</b> Date From: 08/15/18      Date To: 08/16/18 Time From: 0700      Time To: 0700	<b>3.</b>  Branch: <b>IV</b>  Div/Group: <b>N</b>  <p style="text-align: center;"><b>November</b></p> <p style="text-align: center;"><b>**DAY Page 1 of 2 **</b></p>
<b>4. Operations Personnel:</b> Operations Section Chief: <b>S. Crawford/ A. McBath (T) Day      Night Ops: F. Berbena</b> Branch Director: <b>M. Fields</b> Branch Safety: <b>R. Diaz / R. Booker 12hr</b> Division/Group Supervisor: <b>C. Martinelli</b>		

5. Resources Assigned:					** Resources Below in Bold are 12 Hour **		Reporting Location, Special Equipment, Remarks, Notes, and Information Time      Location
Resource Identifier	ALS	Leader	Personnel	Request #			
STC SHF 3675C		<b>Smyth, Keith</b>	<b>27</b>	<b>E-164</b>	<b>0700-1900</b>	<b>DP 33</b>	
STF FL S/T 1		<b>Harris, Charles Ashley</b>	<b>12</b>	<b>E-679</b>	<b>0700-1900</b>	<b>DP 33</b>	
T/F CARR #20		<b>Brady/M.Lilienthal/C.Egge</b>	<b>20</b>		<b>0700-1900</b>	<b>DP 33</b>	
ENG T6 WAX WORLAND 64		<b>Nelson, Troy</b>	<b>3</b>	<b>E-234</b>	<b>0700-1900</b>	<b>DP 33</b>	
ENG T6 GAR BRUSH 114		<b>Baxley, Ashley</b>	<b>3</b>	<b>E-814</b>	<b>0700-1900</b>	<b>DP 33</b>	
DRW CNF DESCANSO CREW 5		<b>Healy, Patrick</b>	<b>21</b>	<b>C-200014</b>	<b>0700-1900</b>	<b>DP 33</b>	
DRW CCC SHASTA 21		<b>Cruz, Lloyd</b>	<b>17</b>	<b>C-200040</b>	<b>0700-1900</b>	<b>DP 33</b>	
DOZ PVT E-200006		<b>Warner, Gary</b>	<b>3</b>	<b>E-200006</b>	<b>0700-1900</b>	<b>DP 33</b>	
DOZ PVT E-200018		<b>Sale, Ben</b>	<b>2</b>	<b>E-200018</b>	<b>0700-1900</b>	<b>DP 33</b>	
V/T PVT E-1158		<b>Hodgson, Carrie</b>	<b>1</b>	<b>E-1158</b>	<b>0700-1900</b>	<b>DP 33</b>	
V/T PVT E-1159		<b>Dahl, Mark</b>	<b>1</b>	<b>E-1159</b>	<b>0700-1900</b>	<b>DP 33</b>	
V/T PVT E-1185		<b>Williams, Wayne</b>	<b>1</b>	<b>E-1185</b>	<b>0700-1900</b>	<b>DP 33</b>	
V/T PVT E-200013		<b>Jungwirth, Jerry</b>	<b>1</b>	<b>E-200013</b>	<b>0700-1900</b>	<b>DP 33</b>	
EXC PVT E-958		<b>Hackworth, Doug</b>	<b>1</b>	<b>E-958</b>	<b>0700-1900</b>	<b>DP 33</b>	
IKG PVT E-1230		<b>Wurlitzer, George</b>	<b>1</b>	<b>E-1230</b>	<b>0700-1900</b>	<b>DP 33</b>	
ALM O-96		<b>Derek, Jacob</b>	<b>2</b>	<b>O-96</b>	<b>0700-1900</b>	<b>DP 33</b>	
ALM O-667		<b>McDaniel</b>	<b>2</b>	<b>O-667</b>	<b>0700-1900</b>	<b>DP 33</b>	
ALM O-669		<b>Garwood, Lance</b>	<b>2</b>	<b>O-669</b>	<b>0700-1900</b>	<b>DP 33</b>	

**Work Assignments:**  
 Hold fire in planned lines.  
 Improve and hold control lines.  
 Prepare for firing operations.  
 Top up 300 feet or 100%.  
 Backhaul garbage, hose, and water.

**Special Instructions:**  
**\*BR IV resource will be supported out of Lakehead Camp following shift\*\*\***  
 Identify for backhaul any hose and equipment in the fire perimeter.

**Communications** (radio and/or phone contact numbers needed for this assignment):

Name	Ch	Function	Rx Freq	Rx Tone	Tx Freq	Tx Tone	Notes
HA CMD	1	COMMAND	154.4300	136.5	159.0150	123.0 (T2)	(T2) BASS MTN
IFC T7	13	TACTICAL	168.2500	131.8 (T3)	168.2500	131.8 (T3)	
ALCORD	15	MEDICAL	156.0750	156.7 (T6)	156.0750	156.7 (T6)	MEDICAL
A-G CDF T17	6	A-G	159.3150	192.8	159.3150	192.8	A-G CDF TAC 17
UARD	16	EMERGENCY	168.6250	0	168.6250	110.9	EMERGENCY USE ONLY

<b>Prepared by: Name:</b> Jordan Weber	<b>Pos/Title:</b> RESL(T)	<b>Signature:</b>
<b>ICS 204</b>	<b>Date/Time:</b> 8/14/2018 2216 hrs	

## ASSIGNMENT LIST (ICS 204)

<b>1. Incident Name:</b> <p style="text-align: center;">Carr</p>	<b>2. Operational Period:</b> Date From: 08/15/18     Date To: 08/16/18 Time From: 0700            Time To: 0700	<b>3.</b>  Branch: <span style="float: right;"><b>IV</b></span>  Div/Group: <span style="float: right;"><b>N</b></span>  <p style="text-align: center;"><b>November</b></p> <p style="text-align: right;"><b>**DAY Page 2 of 2**</b></p>
---	--	--

<b>4. Operations Personnel:</b> Operations Section Chief: <b>S. Crawford/ A. McBath (T) Day</b> <b>Night Ops: F. Berbena</b> Branch Director: <b>M. Fields</b> Branch Safety: R. Diaz / R. Booker 12hr Division/Group Supervisor: <b>C. Martinelli</b>	
---	--

<b>5. Resources Assigned:</b>					<b>** Resources Below in Bold are 12 Hour **</b>		Reporting Location, Special Equipment, Remarks, Notes, and Information	
Resource Identifier	ALS	Leader	Personnel	Request #	Time	Location		
<b>FALM O-849</b>		<b>Guay, Ryan</b>	<b>2</b>	<b>O-849</b>	<b>0700-1900</b>	<b>DP 33</b>		
<b>FALM O-851</b>		<b>Falm Pvt Volcano Creek</b>	<b>2</b>	<b>O-851</b>	<b>0700-1900</b>	<b>DP 33</b>		
<b>FALM O-200108</b>		<b>Mckellar Tree Service</b>	<b>2</b>	<b>O-200108</b>	<b>0700-1900</b>	<b>DP 33</b>		
<b>FALB DUNN O-200135</b>		<b>Dunn, Casey</b>	<b>1</b>	<b>O-200135</b>	<b>0700-1900</b>	<b>DP 33</b>		
<b>FALB WACHHOLZ O-200175</b>		<b>Wachholz, Michael</b>	<b>1</b>	<b>O-200175</b>	<b>0700-1900</b>	<b>DP 33</b>		
<b>TFLD MEYER O-580</b>		<b>Wachholz, Michael</b>	<b>1</b>	<b>O-200175</b>	<b>0700-1900</b>	<b>DP 33</b>		
<b>HEQB (T) CARPENTER O-200081</b>		<b>Carpenter, Dennis</b>	<b>1</b>	<b>O-200081</b>	<b>0700-1900</b>	<b>DP 33</b>		
<b>ATVO RUNDQUIST O-910</b>		<b>Rundquist, Rachel</b>	<b>1</b>	<b>O-910</b>	<b>0700-1900</b>	<b>DP 33</b>		

**6. Work Assignments:**  
 Hold fire in planned lines.  
 Improve and hold control lines.  
 Prepare for firing operations.  
 Mop up 300 feet or 100%.  
 Backhaul garbage, hose, and water.

**7. Special Instructions:**  
**\*\*\*BR IV reasource will be supported out of Lakehead Camp following shift\*\*\***  
 Identify for backhaul any hose and equipment in the fire perimeter.

**8. Communications** (radio and/or phone contact numbers needed for this assignment):

Name	Ch	Function	Rx Freq	Rx Tone	Tx Freq	Tx Tone	Notes
SHA CMD	1	COMMAND	154.4300	136.5	159.0150	123.0 (T2)	(T2) BASS MTN
NIFC T7	13	TACTICAL	168.2500	131.8 (T3)	168.2500	131.8 (T3)	
CALCORD	15	MEDICAL	156.0750	156.7 (T6)	156.0750	156.7 (T6)	MEDICAL
A-G CDF T17	6	A-G	159.3150	192.8	159.3150	192.8	A-G CDF TAC 17
GUARD	16	EMERGENCY	168.6250	0	168.6250	110.9	EMERGENCY USE ONLY

<b>9. Prepared by: Name:</b>	Jordan Weber	Pos/Title:	RESL(T)	<b>Signature:</b>	
<b>ICS 204</b>	Date/Time:	8/14/2018	2216 hrs		

## ASSIGNMENT LIST (ICS 204)

<b>1. Incident Name:</b> <p style="text-align: center;">Carr</p>	<b>2. Operational Period:</b> Date From: 08/15/18      Date To: 08/16/18 Time From: 0700          Time To: 0700	<b>3.</b>  Branch: <span style="float: right;"><b>IV</b></span>  Div/Group: <span style="float: right;"><b>N</b></span>  <span style="float: right;"><b>November</b></span> <span style="float: right;"><b>** Night **</b></span>
---	---	--

<b>4. Operations Personnel:</b>					
Operations Section Chief: <b>S. Crawford/ A. McBath (T) Day</b> <b>Night Ops: F. Berbena</b>					
Branch Director: <b>M. Fields</b>			Branch Safety: <b>R. Diaz / R. Booker 12hr</b>		
Division/Group Supervisor: <b>C. Martinelli</b>					
<b>5. Resources Assigned:</b>					
<b>** Resources Below in Bold are 12 Hour **</b>					
Resource Identifier	ALS	Leader	Personnel	Request #	Reporting Location, Special Equipment, Remarks, Notes, and Information Time                      Location
CRW PVT C-200000		<b>Campbell, Brandon</b>	<b>20</b>	<b>C-200000</b>	<b>1900-0700    DP 33</b>
CRW PVT C-200001		<b>Campbell, Jason</b>	<b>20</b>	<b>C-200001</b>	<b>1900-0700    DP 33</b>
CRW FTA FORT APACHE #01		<b>Burnette, Kenny</b>	<b>20</b>	<b>C-200035</b>	<b>0700-1900    DP 33</b>
N/T PVT E-1183		<b>Virag, Wayne</b>	<b>1</b>	<b>E-1183</b>	<b>1900-0700    DP 33</b>
N/T PVT E-1184		<b>Darger, Steve</b>	<b>1</b>	<b>E-1184</b>	<b>1900-0700    DP 33</b>

- 6. Work Assignments:**
- Hold fire in planned lines.
  - Improve and hold control lines.
  - Prepare for firing operations.
  - Map up 300 feet or 100%.
  - Backhaul garbage, hose, and water.

**7. Special Instructions:**

**\*\*BR IV resource will be supported out of Lakehead Camp following shift\*\***

Identify for backhaul any hose and equipment in the fire perimeter.

**8. Communications** (radio and/or phone contact numbers needed for this assignment):

Name	Ch	Function	Rx Freq	Rx Tone	Tx Freq	Tx Tone	Notes
CHA CMD	1	COMMAND	154.4300	136.5	159.0150	123.0 (T2)	(T2) BASS MTN
IIFC T7	13	TACTICAL	168.2500	131.8 (T3)	168.2500	131.8 (T3)	
ALCORD	15	MEDICAL	156.0750	156.7 (T6)	156.0750	156.7 (T6)	MEDICAL
A-G CDF T17	6	A-G	159.3150	192.8	159.3150	192.8	A-G CDF TAC 17
GUARD	16	EMERGENCY	168.6250	0	168.6250	110.9	EMERGENCY USE ONLY

**9. Prepared by: Name:** Jordan Weber      Pos/Title: RESL(T)  
**CS 204**      Date/Time: 8/14/2018      2216 hrs      Signature:











## ASSIGNMENT LIST (ICS 204)

<b>1. Incident Name:</b> Carr		<b>2. Operational Period:</b> Date From: 08/15/18    Date To: 08/16/18 Time From: 0700    Time To: 0700			<b>3.</b> Branch: <b>V</b> Div/Group: <b>P/S</b> <b>Papa</b> <b>Page 1 of 2</b>		
<b>4. Operations Personnel:</b> Operations Section Chief: <b>S. Crawford/ A. McBath (T) Day    Night Ops: F. Berbena</b> Branch Director: <b>A. Latta (T)</b> Branch Safety: <b>D. Stuart / M. Cobb (T)</b> Division/Group Supervisor: <b>B. Lanning</b>							
<b>5. Resources Assigned:</b>		<b>** Resources Below in Bold are 12 Hour **</b>			Reporting Location, Special Equipment, Remarks, Notes, and Information Time                      Location		
Resource Identifier	ALS	Leader	Personnel	Request #			
STC SCU 9160C		Collins, Craig	22	E-249	0700-0700	DP 43	
STC XTB 4230C	ALS	Zlendick, Brad	17	E-209	0700-0700	DP 43	
T/F TX 3		Woodward, Brandon	17	E-1225	0700-0700	DP 43	
<b>T/F CARR #25</b>		<b>M. Bertrand/J. Rhodes</b>	<b>23</b>		<b>0700-1900</b>	<b>DP 43</b>	
STG HUU 9122G		Mahoney, James	35	C-14	0700-0700	DP 43	
STG SKU 9261G		Pindell, Seth	37	C-5	0700-0700	DP 43	
STG SHU 9276G		Drummond, Howard	33	C-162	0700-0700	DP 43	
DOZ PVT E-92		Rhoades, Steven	2	E-92	0700-0700	DP 43	
DOZ PVT E-94		Bruce Miller	2	E-94	0700-0700	DP 43	
DOZ PVT E-241		Larue, Clint	2	E-241	0700-0700	DP 43	
DOZ PVT E-242		Drue, Gangbin	2	E-242	0700-0700	DP 43	
W/T PVT E-352		Andrews, Tammy	2	E-352	0700-0700	DP 43	
W/T PVT E-354		Matteroli, Clay	2	E-354	0700-0700	DP 43	
W/T PVT E-397		Lopez, Frankie	2	E-397	0700-0700	DP 43	
W/T PVT E-398		Craig, Davis	2	E-398	0700-0700	DP 43	
W/T PVT E-758		Jones, Ernest	2	E-758	0700-0700	DP 43	
W/T PVT E-887		Tallon, Lowell	2	E-887	0700-0700	DP 43	
<b>SHASTA BOAT T/F</b>		<b>Sgt. Gee</b>			<b>0700-1900</b>	<b>DP 43</b>	
<b>6. Work Assignments:</b> Prepare indirect control lines for possible firing operations. Fall hazard trees, and trees that will threaten control lines. Improve and hold control lines. Mop up 300 feet or 100%. Prepare for firing operations. Backhaul garbage, hose, and water.							
<b>7. Special Instructions:</b> Identify for backhaul any hose and equipment in the fire perimeter.							
<b>8. Communications</b> (radio and/or phone contact numbers needed for this assignment):							
Name	Ch	Function	Rx Freq	Rx Tone	Tx Freq	Tx Tone	Notes
SHA CMD	1	COMMAND	154.4300	136.5	159.0150	123.0 (T2)	(T2) BASS MTN
VFIRE 26	10	TACTICAL	154.3025	156.7 (T6)	154.3025	156.7 (T6)	
CALCORD	15	MEDICAL	156.0750	156.7 (T6)	156.0750	156.7 (T6)	MEDICAL
A-G CDF T17	6	A-G	159.3150	192.8	159.3150	192.8	A-G CDF TAC 17
GUARD	16	EMERGENCY	168.6250	0	168.6250	110.9	EMERGENCY USE ONLY
<b>9. Prepared by: Name:</b> Jordan Weber		<b>Pos/Title:</b> RESL(T)		<b>Signature:</b>			
<b>ICS 204</b>		<b>Date/Time:</b> 8/14/2018    2216 hrs					



## ASSIGNMENT LIST (ICS 204)

<b>1. Incident Name:</b> Carr		<b>2. Operational Period:</b> Date From: 08/15/18    Date To: 08/16/18 Time From: 0700    Time To: 0700				<b>3.</b>  Branch: <b>Supp Repair</b> Div/Group: <b>Redding Group</b>	
<b>4. Operations Personnel:</b> Operations Section Chief: <b>S. Crawford/ A. McBath (T) Day    Night Ops: F. Berbena</b> Branch Director: <b>B. Rowe (12Hr)</b> Division/Group Supervisor: <b>M. Rosan (12Hr)</b>							
<b>5. Resources Assigned:</b>		<b>** Resources Below in Bold are 12 Hour **</b>				Reporting Location, Special Equipment, Remarks, Notes, and Information Time                      Location	
Resource Identifier	ALS	Leader	Personnel	Request #			
CRW NPX SAMOA 61		<b>Lee, Andrew</b>	<b>21</b>	<b>C-123</b>	<b>0700-1900</b>	<b>L. Springs Rd.</b>	
CRW BLM WHISKEYTOWN WFM		<b>Preston, Robert</b>	<b>5</b>	<b>O-1065</b>	<b>0700-1900</b>	<b>L. Springs Rd.</b>	
DOZ PVT E-87		<b>White, Dusty</b>	<b>2</b>	<b>E-87</b>	<b>0700-1900</b>	<b>L. Springs Rd.</b>	
DOZ PVT E-858		<b>Sanders, Danny</b>	<b>2</b>	<b>E-858</b>	<b>0700-1900</b>	<b>L. Springs Rd.</b>	
DOZ PVT E-879		<b>Klauer, Jim</b>	<b>2</b>	<b>E-879</b>	<b>0700-1900</b>	<b>L. Springs Rd.</b>	
W/T PVT E-1181		<b>Baldwin, Crystal</b>	<b>1</b>	<b>E-1181</b>	<b>0700-1900</b>	<b>L. Springs Rd.</b>	
EXC PVT E-1143		<b>Mcbride, Andrew</b>	<b>1</b>	<b>E-1143</b>	<b>0700-1900</b>	<b>L. Springs Rd.</b>	
EXC PVT E-1144		<b>Anderson, Todd</b>	<b>1</b>	<b>E-1144</b>	<b>0700-1900</b>	<b>L. Springs Rd.</b>	
EXC PVT E-1190		<b>Ingram, Brad</b>	<b>1</b>	<b>E-1190</b>	<b>0700-1900</b>	<b>L. Springs Rd.</b>	
EXC PVT E-1200		<b>White, Bill</b>	<b>1</b>	<b>E-1200</b>	<b>0700-1900</b>	<b>L. Springs Rd.</b>	
EXC PVT E-1255		<b>Williams, john</b>	<b>1</b>	<b>E-1255</b>	<b>0700-1900</b>	<b>L. Springs Rd.</b>	
FALM O-852		<b>Mills, Shane</b>	<b>2</b>	<b>O-852</b>	<b>0700-1900</b>	<b>L. Springs Rd.</b>	
FOBS (T) SHEW O-492		<b>Shew, Nicholas</b>	<b>1</b>	<b>O-492</b>	<b>0700-1900</b>	<b>L. Springs Rd.</b>	
READ KAWAHARA O-200183		<b>Kawahara, Monte</b>	<b>1</b>	<b>O-200183</b>	<b>0700-1900</b>	<b>L. Springs Rd.</b>	
DPRO (T) BUTCHER		<b>Butcher, Jason</b>	<b>1</b>	<b>O-635</b>	<b>700-1900</b>	<b>L. Springs Rd.</b>	
HEQB DAVI O-15		<b>Davi, Jason</b>	<b>1</b>	<b>O-15</b>	<b>0700-1900</b>	<b>L. Springs Rd.</b>	
HEQB (T) GOLDIE O-519		<b>Goldie, Nathan</b>	<b>1</b>	<b>O-519</b>	<b>0700-1900</b>	<b>L. Springs Rd.</b>	
<b>6. Work Assignments:</b> Repair fire lines, spread berms and slash piles. Repair fence. Identify suppressions repair activities.							
<b>7. Special Instructions:</b>  Identify for backhaul any hose and equipment in the fire perimeter.							
<b>8. Communications</b> (radio and/or phone contact numbers needed for this assignment):							
Name	Ch	Function	Rx Freq	Rx Tone	Tx Freq	Tx Tone	Notes
SHA CMD	1	COMMAND	154.4300	136.5	159.0150	123.0 (T2)	(T2) BASS MTN
VTAC13	14	TACTICAL	158.7375	156.7 (T6)	158.7375	156.7 (T6)	
CALCORD	15	MEDICAL	156.0750	156.7 (T6)	156.0750	156.7 (T6)	MEDICAL
A-G CDF T17	6	A-G	159.3150	192.8	159.3150	192.8	A-G CDF TAC 17
GUARD	16	EMERGENCY	168.6250	0	168.6250	110.9	EMERGENCY USE ONLY
<b>9. Prepared by: Name:</b> Jordan Weber		<b>Pos/Title:</b> RESL(T)		<b>Signature:</b>			
<b>ICS 204</b>		<b>Date/Time:</b> 8/14/2018		<b>2216 hrs</b>			

## ASSIGNMENT LIST (ICS 204)

<b>Incident Name:</b> <p style="text-align: center;">Carr</p>	<b>2. Operational Period:</b> Date From: 08/15/18      Date To: 08/16/18 Time From: 0700              Time To: 0700	<b>3.</b>  Branch: <b>Supp Repair</b> Div/Group: <b>Lakehead Group</b>  <p style="text-align: right;">Page 1 of 2</p>
<b>Operations Personnel:</b> Operations Section Chief: <b>S. Crawford/ A. McBath (T) Day    Night Ops: F. Berbena</b> Branch Director: <b>B. Rowe (12Hr)</b> Division/Group Supervisor: <b>B. Rodgers (12Hr)</b>		

Resources Assigned:		** Resources Below in Bold are 12 Hour **			Reporting Location, Special Equipment, Remarks, Notes, and Information	
Resource Identifier	ALS	Leader	Personnel	Request #	Time	Location
OZ PVT E-407		<b>Ingram, Brad</b>	<b>3</b>	<b>E-407</b>	<b>0700-1900</b>	<b>DP 37</b>
OZ PVT E-419		<b>Waterman, Tim</b>	<b>3</b>	<b>E-419</b>	<b>0700-1900</b>	<b>DP 37</b>
//T PVT E-394		<b>Troedel, Bryan</b>	<b>2</b>	<b>E-394</b>	<b>0700-1900</b>	<b>DP 37</b>
//T PVT E-892		<b>Bales, Cody</b>	<b>3</b>	<b>E-892</b>	<b>0700-1900</b>	<b>DP 37</b>
//T PVT E-1110		<b>Crownover, Wes</b>	<b>1</b>	<b>E-1110</b>	<b>0700-1900</b>	<b>DP 37</b>
//T PVT E-1169		<b>Leaverton, Ryan</b>	<b>1</b>	<b>E-1169</b>	<b>0700-1900</b>	<b>DP 37</b>
//T PVT E-1174		<b>Johnson, Dave</b>	<b>1</b>	<b>E-1174</b>	<b>0700-1900</b>	<b>DP 37</b>
//T PVT E-1178		<b>Olson, Ryan</b>	<b>2</b>	<b>E-1178</b>	<b>0700-1900</b>	<b>DP 37</b>
ELB PVT E-831		<b>Alcuna, Eddie</b>	<b>2</b>	<b>E-831</b>	<b>0700-1900</b>	<b>DP 37</b>
KD PVT E-1266		<b>Vaughn, James</b>	<b>1</b>	<b>E-1266</b>	<b>0700-1900</b>	<b>DP 37</b>
KD PVT E1267		<b>Ross, Kolen</b>	<b>1</b>	<b>E-1267</b>	<b>0700-1900</b>	<b>DP 37</b>
OW PVT E-1274		<b>Allen, Bobby</b>	<b>1</b>	<b>E-1274</b>	<b>0700-1900</b>	<b>DP 37</b>
OW PVT E-1280		<b>Ruste, Joe</b>	<b>1</b>	<b>E-1280</b>	<b>0700-1900</b>	<b>DP 37</b>
EAD MCFADIN O-940		<b>Mcfadin, Michael</b>	<b>1</b>	<b>O-940</b>	<b>0700-1900</b>	<b>DP 37</b>
EAD MORRILL O-973		<b>Morrill, David</b>	<b>1</b>	<b>O-973</b>	<b>0700-1900</b>	<b>DP 37</b>
EAD MCELROY O-200003		<b>Mcelroy, Josiah</b>	<b>1</b>	<b>O-200003</b>	<b>0700-1900</b>	<b>DP 37</b>
EAD EVANS O-200086		<b>Evans, Lowell</b>	<b>1</b>	<b>O-200086</b>	<b>0700-1900</b>	<b>DP 37</b>
EAD (T) MARTINEZ O-905		<b>Martinez, Samuel</b>	<b>1</b>	<b>O-905</b>	<b>0700-1900</b>	<b>DP 37</b>

**Work Assignments:**  
 Identify resources at risk working with OPS.  
 Identify suppression repair activities.

**Special Instructions:**  
 Identify for backhaul any hose and equipment in the fire perimeter.

**Communications** (radio and/or phone contact numbers needed for this assignment):

Time	Ch	Function	Rx Freq	Rx Tone	Tx Freq	Tx Tone	Notes
IA CMD	1	COMMAND	154.4300	136.5	159.0150	123.0 (T2)	(T2) BASS MTN
AC13	14	TACTICAL	158.7375	156.7 (T6)	158.7375	156.7 (T6)	
ALCORD	15	MEDICAL	156.0750	156.7 (T6)	156.0750	156.7 (T6)	MEDICAL
G CDF T17	6	A-G	159.3150	192.8	159.3150	192.8	A-G CDF TAC 17
JARD	16	EMERGENCY	168.6250	0	168.6250	110.9	EMERGENCY USE ONLY

**Prepared by: Name:** Jordan Weber      **Pos/Title:** RESL(T)  
**S 204**      **Date/Time:** 8/14/2018      2216 hrs      **Signature:**





## ASSIGNMENT LIST (ICS 204)

<b>1. Incident Name:</b> <p style="text-align: center;">Carr</p>	<b>2. Operational Period:</b> Date From: 08/15/18      Date To: 08/16/18 Time From: 0700      Time To: 0700	<b>3.</b>  Branch: <b>Supp Repair</b>  Div/Group: <b>Shasta Group</b>
<b>4. Operations Personnel:</b> Operations Section Chief: <b>S. Crawford/ A. McBath (T) Day</b> Night Ops: <b>F. Berbena</b> Branch Director: <b>B. Rowe (12Hr)</b> Division/Group Supervisor: <b>T. Lucas (12Hr)</b>		

5. Resources Assigned:		** Resources Below in Bold are 12 Hour **			Reporting Location, Special Equipment, Remarks, Notes, and Information	
Resource Identifier	ALS	Leader	Personnel	Request #	Time	Location
JOZ PVT E-342		<b>Leland, Ward</b>	<b>2</b>	<b>E-342</b>	<b>0700-1900</b>	<b>Flanagin Rd.</b>
JOZ PVT E-349		<b>Darrah, Keith</b>	<b>2</b>	<b>E-349</b>	<b>0700-1900</b>	<b>Flanagin Rd.</b>
JOZ PVT E-840		<b>O'connell, Brandon</b>	<b>2</b>	<b>E-840</b>	<b>0700-1900</b>	<b>Flanagin Rd.</b>
JOZ PVT E-847		<b>Funes, Anthony</b>	<b>2</b>	<b>E-847</b>	<b>0700-1900</b>	<b>Flanagin Rd.</b>
JOZ PVT E-862		<b>Greer, Mike</b>	<b>2</b>	<b>E-862</b>	<b>0700-1900</b>	<b>Flanagin Rd.</b>
JOZ PVT E-881		<b>Miles, Daniel</b>	<b>2</b>	<b>E-881</b>	<b>0700-1900</b>	<b>Flanagin Rd.</b>
JOZ PVT E-882		<b>Keyes, Josh</b>	<b>2</b>	<b>E-882</b>	<b>0700-1900</b>	<b>Flanagin Rd.</b>
V/T PVT E-126		<b>Hudson, Ken</b>	<b>2</b>	<b>E-126</b>	<b>0700-1900</b>	<b>Flanagin Rd.</b>
XC PVT E-1188		<b>Stugelmeyer, John</b>	<b>1</b>	<b>E-1188</b>	<b>0700-1900</b>	<b>Flanagin Rd.</b>
XC PVT E-1256		<b>Lawless, Gary</b>	<b>1</b>	<b>E-1256</b>	<b>0700-1900</b>	<b>Flanagin Rd.</b>
XC PVT E-1257		<b>Pereira, Kyle</b>	<b>1</b>	<b>E-1257</b>	<b>0700-1900</b>	<b>Flanagin Rd.</b>
XC PVT E-1258		<b>Dinning, Kenny</b>	<b>1</b>	<b>E-1258</b>	<b>0700-1900</b>	<b>Flanagin Rd.</b>
XC PVT E-1259		<b>Andrews, Don</b>	<b>1</b>	<b>E-1259</b>	<b>0700-1900</b>	<b>Flanagin Rd.</b>
TEN BROWNING O-821		<b>Browning, Gehrig</b>	<b>1</b>	<b>O-821</b>	<b>0700-1900</b>	<b>Flanagin Rd.</b>
FLD FERGUSON O-200162		<b>Ferguson, John</b>	<b>1</b>	<b>O-200162</b>	<b>0700-1900</b>	<b>Flanagin Rd.</b>
FLD DUFFY O-200164		<b>Duffy, Anthony</b>	<b>1</b>	<b>O-200164</b>	<b>0700-1900</b>	<b>Flanagin Rd.</b>
RCH PLANK O-887		<b>Plank, Roy William</b>	<b>1</b>	<b>O-887</b>	<b>0700-1900</b>	<b>Flanagin Rd.</b>
HEAD NEEL O-200111		<b>Neel, Alden</b>	<b>1</b>	<b>O-200111</b>	<b>0700-1900</b>	<b>Flanagin Rd.</b>
HEAD FARRIS O-200195		<b>Farris, Pat</b>	<b>1</b>	<b>O-200195</b>	<b>0700-1900</b>	<b>Flanagin Rd.</b>

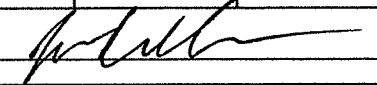
**6. Work Assignments:**  
 Repair fire lines, Spread berms and slash piles.  
 Water bar where appropriate.  
 Do not disturb cultural sites.

**7. Special Instructions:**  
 Identify for backhaul any hose and equipment in the fire perimeter.

Communications (radio and/or phone contact numbers needed for this assignment):							
Name	Ch	Function	Rx Freq	Rx Tone	Tx Freq	Tx Tone	Notes
HA CMD	1	COMMAND	154.4300	136.5	159.0150	123.0 (T2)	(T2) BASS MTN
TAC13	14	TACTICAL	158.7375	156.7 (T6)	158.7375	156.7 (T6)	
ALCORD	15	MEDICAL	156.0750	156.7 (T6)	156.0750	156.7 (T6)	MEDICAL
A-G CDF T17	6	A-G	159.3150	192.8	159.3150	192.8	A-G CDF TAC 17
WARD	16	EMERGENCY	168.6250	0	168.6250	110.9	EMERGENCY USE ONLY

<b>Prepared by: Name:</b> Jordan Weber	<b>Pos/Title:</b> RESL(T)	<b>Date/Time:</b> 8/14/2018	<b>2216 hrs</b>	<b>Signature:</b>
--	---------------------------	-----------------------------	-----------------	-------------------

## ASSIGNMENT LIST (ICS 204)

<b>1. Incident Name:</b> Carr		<b>2. Operational Period:</b> Date From: 08/15/18    Date To: 08/16/18 Time From: 0700    Time To: 0700			<b>3.</b> Branch: <b>Supp Repair</b> Div/Group: <b>Trinity Group</b>		
<b>4. Operations Personnel:</b> Operations Section Chief: <b>S. Crawford/ A. McBath (T) Day    Night Ops: F. Berbena</b> Branch Director: <b>B. Rowe (12Hr)</b> Division/Group Supervisor: <b>J. Washburn (12Hr)</b>					<b>Page 1 of 3</b>		
<b>5. Resources Assigned:</b>		<b>** Resources Below in Bold are 12 Hour **</b>			Reporting Location, Special Equipment, Remarks, Notes, and Information Time                      Location		
Resource Identifier	ALS	Leader	Personnel	Request #			
DOZ PVT E-51		<b>Cattaneo, Angelo</b>	<b>2</b>	<b>E-51</b>	<b>0700-1900</b>	<b>DP 55</b>	
DOZ PVT E-88		<b>Obrien, Mike</b>	<b>2</b>	<b>E-88</b>	<b>0700-1900</b>	<b>DP 55</b>	
DOZ PVT E-243		<b>Darr, Chris</b>	<b>2</b>	<b>E-243</b>	<b>0700-1900</b>	<b>DP 55</b>	
DOZ PVT E-341		<b>Carter, Kevin</b>	<b>2</b>	<b>E-341</b>	<b>0700-1900</b>	<b>DP 55</b>	
DOZ PVT E-343		<b>Wolfe, Larry</b>	<b>2</b>	<b>E-343</b>	<b>0700-1900</b>	<b>DP 55</b>	
DOZ PVT E-403		<b>Smith, Dade</b>	<b>2</b>	<b>E-403</b>	<b>0700-1900</b>	<b>DP 55</b>	
DOZ PVT E-406		<b>Shankles, Daryl</b>	<b>2</b>	<b>E-406</b>	<b>0700-1900</b>	<b>DP 55</b>	
DOZ PVT E-755		<b>Ray, Clant</b>	<b>2</b>	<b>E-755</b>	<b>0700-1900</b>	<b>DP 55</b>	
DOZ PVT E-855		<b>Parlet, Frank</b>	<b>2</b>	<b>E-855</b>	<b>0700-1900</b>	<b>DP 55</b>	
W/T PVT E-142		<b>Jones, Randy</b>	<b>1</b>	<b>E-142</b>	<b>0700-1900</b>	<b>DP 55</b>	
W/T PVT E-308		<b>Wharff, Steve</b>	<b>1</b>	<b>E-308</b>	<b>0700-1900</b>	<b>DP 55</b>	
W/T PVT E-359		<b>Hinkle, John</b>	<b>1</b>	<b>E-359</b>	<b>0700-1900</b>	<b>DP 55</b>	
W/T PVT E-799		<b>Prince, John</b>	<b>2</b>	<b>E-799</b>	<b>0700-1900</b>	<b>DP 55</b>	
W/T PVT E-1112		<b>Lemos, Darrel</b>	<b>1</b>	<b>E-1112</b>	<b>0700-1900</b>	<b>DP 55</b>	
W/T PVT E-1113		<b>Braziel, Mel</b>	<b>1</b>	<b>E-1113</b>	<b>0700-1900</b>	<b>DP 55</b>	
W/T PVT E-1168		<b>Foster, Justin</b>	<b>1</b>	<b>E-1168</b>	<b>0700-1900</b>	<b>DP 55</b>	
W/T PVT E-1170		<b>Roth, Bryan</b>	<b>2</b>	<b>E-1170</b>	<b>0700-1900</b>	<b>DP 55</b>	
W/T PVT E-1171		<b>Mcgarr, Dennis</b>	<b>2</b>	<b>E-1171</b>	<b>0700-1900</b>	<b>DP 55</b>	
<b>6. Work Assignments:</b> Grade roads. Repair fire lines, spread berms and slash piles.							
<b>7. Special Instructions:</b> Identify for backhaul any hose and equipment in the fire perimeter.							
<b>8. Communications</b> (radio and/or phone contact numbers needed for this assignment):							
Name	Ch	Function	Rx Freq	Rx Tone	Tx Freq	Tx Tone	Notes
SHA CMD	1	COMMAND	154.4300	136.5	159.0150	123.0 (T2)	(T2) BASS MTN
VTAC13	14	TACTICAL	158.7375	156.7 (T6)	158.7375	156.7 (T6)	
CALCORD	15	MEDICAL	156.0750	156.7 (T6)	156.0750	156.7 (T6)	MEDICAL
A-G CDF T17	6	A-G	159.3150	192.8	159.3150	192.8	A-G CDF TAC 17
GUARD	16	EMERGENCY	168.6250	0	168.6250	110.9	EMERGENCY USE ONLY
<b>9. Prepared by: Name:</b> Jordan Weber		<b>Pos/Title:</b> RESL(T)		<b>Signature:</b> 			
<b>ICS 204</b>		<b>Date/Time:</b> 8/14/2018		<b>2216 hrs</b>			

## ASSIGNMENT LIST (ICS 204)

<b>1. Incident Name:</b> <p style="text-align: center;">Carr</p>	<b>2. Operational Period:</b> Date From: 08/15/18      Date To: 08/16/18 Time From: 0700              Time To: 0700	<b>3.</b>  Branch: <b>Supp Repair</b> Div/Group: <b>Trinity Group</b>
<b>4. Operations Personnel:</b> Operations Section Chief: <b>S. Crawford/ A. McBath (T) Day    Night Ops: F. Berbena</b> Branch Director: <b>B. Rowe (12Hr)</b> Division/Group Supervisor: <b>J. Washburn (12Hr)</b>		Page 2 of 3

5. Resources Assigned:      ** Resources Below in Bold are 12 Hour **					Reporting Location, Special Equipment, Remarks, Notes, and Information Time                      Location
Resource Identifier	ALS	Leader	Personnel	Request #	
<b>W/T PVT E-1175</b>		<b>Zabel, Frank</b>	<b>1</b>	<b>E-1175</b>	<b>0700-1900    DP 55</b>
<b>W/T PVT E-1179</b>		<b>Negranti, James</b>	<b>1</b>	<b>E-1179</b>	<b>0700-1900    DP 55</b>
<b>W/T PVT E-1180</b>		<b>Hove, Ken</b>	<b>1</b>	<b>E-1180</b>	<b>0700-1900    DP 55</b>
<b>W/T PVT E-1182</b>		<b>Leguellec, Michael</b>	<b>1</b>	<b>E-1182</b>	<b>0700-1900    DP 55</b>
<b>W/T PVT E-1186</b>		<b>Condor, Dave</b>	<b>1</b>	<b>E-1186</b>	<b>0700-1900    DP 55</b>
<b>W/T PVT E-1243</b>		<b>Mitchell, Shawn</b>	<b>1</b>	<b>E-1243</b>	<b>0700-1900    DP 55</b>
<b>W/T PVT E-200014</b>		<b>Small, Brent</b>	<b>2</b>	<b>E-200014</b>	<b>0700-1900    DP 55</b>
<b>MAS PVT E-760</b>		<b>Lester, Louis</b>	<b>2</b>	<b>E-760</b>	<b>0700-1900    DP 55</b>
<b>MAS PVT E-764</b>		<b>Grass, Kelvin</b>	<b>2</b>	<b>E-764</b>	<b>0700-1900    DP 55</b>
<b>MAS PVT E-1122</b>		<b>Despars, Dave</b>	<b>1</b>	<b>E-1122</b>	<b>0700-1900    DP 55</b>
<b>GRD PVT E-192</b>		<b>Stenberg, Mike</b>	<b>1</b>	<b>E-192</b>	<b>0700-1900    DP 55</b>
<b>LOG PVT E-1244</b>		<b>Ruste, Joe</b>	<b>1</b>	<b>E-1244</b>	<b>0700-1900    DP 55</b>
<b>FALM O-668</b>		<b>Bundy</b>	<b>2</b>	<b>O-668</b>	<b>0700-1900    DP 55</b>
<b>F OBS PERCY O-64</b>		<b>Percy, Nick</b>	<b>1</b>	<b>O-64</b>	<b>0700-1900    DP 55</b>
<b>READ MERRIFIELD O-200088</b>		<b>Merrifield, Jesse</b>	<b>1</b>	<b>O-200088</b>	<b>0700-1900    DP 55</b>
<b>READ ARCHER O-200184</b>		<b>Archer, Lauren</b>	<b>1</b>	<b>O-200184</b>	<b>0700-1900    DP 55</b>
<b>READ (T) RADTKE O-200087</b>		<b>Radtke, Rebecca</b>	<b>1</b>	<b>O-200087</b>	<b>0700-1900    DP 55</b>
<b>F SRS WOESSNER O-920</b>		<b>Wolter, Corey</b>	<b>1</b>	<b>O-920</b>	<b>0700-1900    DP 55</b>

**h. Work Assignments:**  
 Grade roads.  
 Repair fire lines, spread berms and slash piles.

**i. Special Instructions:**  
 Identify for backhaul any hose and equipment in the fire perimeter.

j. Communications (radio and/or phone contact numbers needed for this assignment):							
Name	Ch	Function	Rx Freq	Rx Tone	Tx Freq	Tx Tone	Notes
SHA CMD	1	COMMAND	154.4300	136.5	159.0150	123.0 (T2)	(T2) BASS MTN
TAC13	14	TACTICAL	158.7375	156.7 (T6)	158.7375	156.7 (T6)	
ALCORD	15	MEDICAL	156.0750	156.7 (T6)	156.0750	156.7 (T6)	MEDICAL
A-G CDF T17	6	A-G	159.3150	192.8	159.3150	192.8	A-G CDF TAC 17
GUARD	16	EMERGENCY	168.6250	0	168.6250	110.9	EMERGENCY USE ONLY

<b>Prepared by: Name:</b>	Jordan Weber	<b>Pos/Title:</b>	RESL(T)	<b>Signature:</b>
<b>ICS 204</b>	<b>Date/Time:</b> 8/14/2018		2216 hrs	



## ASSIGNMENT LIST (ICS 204)

<b>1. Incident Name:</b> <p style="text-align: center;">Carr</p>	<b>2. Operational Period:</b> Date From: 08/15/18      Date To: 08/16/18 Time From: 0700              Time To: 0700	<b>3.</b>  Branch: <b>Supp Repair</b>  Div/Group: <b>Ono Group</b>
<b>4. Operations Personnel:</b> Operations Section Chief: <b>S. Crawford/ A. McBath (T) Day    Night Ops: F. Berbena</b> Branch Director: <b>B. Rowe (12Hr)</b> Division/Group Supervisor: <b>D. Dresselhaus (12Hr)</b>		Page 1 of 2

5. Resources Assigned:		** Resources Below in Bold are 12 Hour **				Reporting Location, Special Equipment, Remarks, Notes, and Information	
Resource Identifier	ALS	Leader	Personnel	Request #	Time	Location	
DOZ PVT E-340		<b>Oilar, Pat</b>	<b>2</b>	<b>E-340</b>	<b>0700-1900</b>	<b>South Fork Rd.</b>	
DOZ PVT E-346		<b>Looper, John</b>	<b>2</b>	<b>E-346</b>	<b>0700-1900</b>	<b>South Fork Rd.</b>	
DOZ PVT E-405		<b>Gill, Levi</b>	<b>1</b>	<b>E-405</b>	<b>0700-1900</b>	<b>South Fork Rd.</b>	
DOZ PVT E-843		<b>Olivolo, Chris</b>	<b>2</b>	<b>E-843</b>	<b>0700-1900</b>	<b>South Fork Rd.</b>	
DOZ PVT E-200002		<b>Cross, Chris</b>	<b>2</b>	<b>E-200002</b>	<b>0700-1900</b>	<b>South Fork Rd.</b>	
DOZ PVT E-200003		<b>Lindauer, Howie</b>	<b>2</b>	<b>E-200003</b>	<b>0700-1900</b>	<b>South Fork Rd.</b>	
W/T PVT E-133		<b>Trumbly, Wayne</b>	<b>1</b>	<b>E-133</b>	<b>0700-1900</b>	<b>South Fork Rd.</b>	
W/T PVT E-393		<b>Troedel, Bryan</b>	<b>1</b>	<b>E-393</b>	<b>0700-1900</b>	<b>South Fork Rd.</b>	
W/T PVT E-759		<b>Cleer, Dana</b>	<b>1</b>	<b>E-759</b>	<b>0700-1900</b>	<b>South Fork Rd.</b>	
W/T PVT E-800		<b>Vest, Scott</b>	<b>1</b>	<b>E-800</b>	<b>0700-1900</b>	<b>South Fork Rd.</b>	
W/T PVT E-1103		<b>Harp, Gloria</b>	<b>1</b>	<b>E-1103</b>	<b>0700-1900</b>	<b>South Fork Rd.</b>	
W/T PVT E-1111		<b>Franklin, Clyde</b>	<b>1</b>	<b>E-1111</b>	<b>0700-1900</b>	<b>South Fork Rd.</b>	
W/T PVT E-1164		<b>Adair, Ernie</b>	<b>1</b>	<b>E-1164</b>	<b>1900-0700</b>	<b>South Fork Rd.</b>	
W/T PVT E-1167		<b>Reynold Hyscell</b>	<b>1</b>	<b>E-1167</b>	<b>0700-1900</b>	<b>South Fork Rd.</b>	
EXC PVT E-763		<b>Jairid Depue</b>	<b>2</b>	<b>E-763</b>	<b>0700-1900</b>	<b>South Fork Rd.</b>	
MAS PVT E-897		<b>Gregory, Stephenie</b>	<b>2</b>	<b>E-897</b>	<b>0700-1900</b>	<b>South Fork Rd.</b>	
MAS PVT E-898		<b>Spratt, Eric</b>	<b>1</b>	<b>E-898</b>	<b>0700-1900</b>	<b>South Fork Rd.</b>	
GRD PVT E-1195		<b>Lassen, Steven</b>	<b>1</b>	<b>E-1195</b>	<b>0700-1900</b>	<b>South Fork Rd.</b>	

**6. Work Assignments:**  
 Grade roads.  
 Repair fire lines, spread berms and slash piles.

**7. Special Instructions:**  
 identify for backhaul any hose and equipment in the fire perimeter.

**8. Communications** (radio and/or phone contact numbers needed for this assignment):

Name	Ch	Function	Rx Freq	Rx Tone	Tx Freq	Tx Tone	Notes
SHA CMD	1	COMMAND	154.4300	136.5	159.0150	123.0 (T2)	(T2) BASS MTN
/TAC13	14	TACTICAL	158.7375	156.7 (T6)	158.7375	156.7 (T6)	
CALCORD	15	MEDICAL	156.0750	156.7 (T6)	156.0750	156.7 (T6)	MEDICAL
A-G CDF T17	6	A-G	159.3150	192.8	159.3150	192.8	A-G CDF TAC 17
GUARD	16	EMERGENCY	168.6250	0	168.6250	110.9	EMERGENCY USE ONLY

**9. Prepared by: Name:** Jordan Weber      **Pos/Title:** RESL(T)  
**CS 204**      **Date/Time:** 8/14/2018      2216 hrs      **Signature:**



## ASSIGNMENT LIST (ICS 204)

<b>1. Incident Name:</b> <p style="text-align: center;">Carr</p>	<b>2. Operational Period:</b> Date From: 08/15/18      Date To: 08/16/18 Time From: 0700      Time To: 0700	<b>3.</b>  Branch: <b>Supp Repair</b>  Div/Group: <b>Baer Group</b>
<b>4. Operations Personnel:</b> Operations Section Chief: <b>S. Crawford/ A. McBath (T) Day    Night Ops: F. Berbena</b> Branch Director: <b>B. Rowe (12Hr)</b> Division/Group Supervisor: <b>D. Havline (12)</b>		

5. Resources Assigned:		** Resources Below in Bold are 12 Hour **				Reporting Location, Special Equipment, Remarks, Notes, and Information	
Resource Identifier	ALS	Leader	Personnel	Request #	Time	Location	
3AEL SCHWAB		<b>Schwab, Rich</b>	<b>1</b>		<b>0700-1900</b>	<b>ICP</b>	
3ABO JOHNSTON		<b>Johnston, Kerry</b>	<b>1</b>		<b>0700-1900</b>	<b>ICP</b>	
3ABO PYZICK		<b>Pyzick, Rich</b>	<b>1</b>		<b>0700-1900</b>	<b>ICP</b>	
3ABO DOLAN		<b>Dolan, Michael</b>	<b>1</b>		<b>0700-1900</b>	<b>ICP</b>	
3AFO STEWART		<b>Stewart, Zackery</b>	<b>1</b>		<b>0700-1900</b>	<b>ICP</b>	
3AFO RHODENBAUGH		<b>Rhodenbaugh, Eric</b>	<b>1</b>		<b>0700-1900</b>	<b>ICP</b>	
3ISS EASTERBROOK		<b>Easterbrook, Richard</b>	<b>1</b>		<b>0700-1900</b>	<b>ICP</b>	
3ISS PELTZ-LEWIS		<b>Peltz-Lewis, Lorri</b>	<b>1</b>		<b>0700-1900</b>	<b>ICP</b>	
3AGE FLANAGAN		<b>Flanagan, Sam</b>	<b>1</b>		<b>0700-1900</b>	<b>ICP</b>	
3AHA PHILLIPS		<b>Phillips, Ash</b>	<b>1</b>		<b>0700-1900</b>	<b>ICP</b>	
3ASS SIMS		<b>Sims, Bill</b>	<b>1</b>		<b>0700-1900</b>	<b>ICP</b>	
3ACS BURNSIDE		<b>Burnside, Carla</b>	<b>1</b>		<b>0700-1900</b>	<b>ICP</b>	
3AHY POST		<b>Post, Sidney</b>	<b>1</b>		<b>0700-1900</b>	<b>ICP</b>	
3AML STOLTZFUS		<b>Stoltzfus, Jeremy</b>	<b>1</b>		<b>0700-1900</b>	<b>ICP</b>	
3OFR HAVLINA		<b>Havlina, Doug</b>	<b>1</b>		<b>0700-1900</b>	<b>ICP</b>	

**6. Work Assignments:**  
 BAER Team specialists will be assessing post fire conditions in coming weeks, beginning 8/13/18.  
 BAER specialists are Red Carded, and will check in with DIVS at morning breakouts and when entering/leaving divisions.

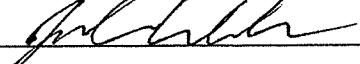
**7. Special Instructions:**

**8. Communications** (radio and/or phone contact numbers needed for this assignment):

Channel	Ch	Function	Rx Freq	Rx Tone	Tx Freq	Tx Tone	Notes
BAER CMD	1	COMMAND	154.4300	136.5	159.0150	123.0 (T2)	(T2) BASS MTN Use assigned DIV TAC
BAER MEDICAL	15	MEDICAL	156.0750	156.7 (T6)	156.0750	156.7 (T6)	MEDICAL
BAER A-G CDF T17	6	A-G	159.3150	192.8	159.3150	192.8	A-G CDF TAC 17
BAER EMERGENCY	16	EMERGENCY	168.6250	0	168.6250	110.9	EMERGENCY USE ONLY

**9. Prepared by: Name:** Jordan Weber      Pos/Title: RESL (T)  
**ICS 204**      Date/Time: 8/14/2018      2216 hrs      Signature:

# ASSIGNMENT LIST (ICS 204)

<b>1. Incident Name:</b> Carr		<b>2. Operational Period:</b> Date From: 08/15/18 Date To: 08/16/18 Time From: 0700 Time To: 0700				<b>3.</b> Branch: Staging <b>Anderson</b>	
<b>4. Operations Personnel:</b> Operations Section Chief: <b>S. Crawford/ A. McBath (T) Day Night Ops: F. Berbena</b> Branch Director: Division/Group Supervisor: <b>S.Bidwell (T)</b>							
<b>5. Resources Assigned:</b>		<b>** Resources Below in Bold are 12 Hour **</b>				Reporting Location, Special Equipment, Remarks, Notes, and Information	
Resource Identifier	ALS	Leader	Personnel	Request #	Time	Location	
						ICP	
<b>6. Work Assignments:</b>							
<b>7. Special Instructions:</b>							
<b>8. Communications</b> (radio and/or phone contact numbers needed for this assignment):							
Name	Ch	Function	Rx Freq	Rx Tone	Tx Freq	Tx Tone	Notes
SHA CMD	1	COMMAND	154.4300	136.5	159.0150	123.0 (T2)	(T2) BASS MTN
CALCORD	15	MEDICAL	156.0750	156.7 (T6)	156.0750	156.7 (T6)	MEDICAL
A-G CDF T17	6	A-G	159.3150	192.8	159.3150	192.8	A-G CDF TAC 17
GUARD	16	EMERGENCY	168.6250	0	168.6250	110.9	EMERGENCY USE ONLY
<b>9. Prepared by: Name:</b>		Jordan Weber		Pos/Title: RESL(T)		Signature: 	
<b>ICS 204</b>		Date/Time: 8/14/2018		2216 hrs			



## ASSIGNMENT LIST (ICS 204)

<b>1. Incident Name:</b> Carr		<b>2. Operational Period:</b> Date From: 08/15/18    Date To: 08/16/18 Time From: 0700         Time To: 0700			<b>3.</b>  Branch:  Staging <b>Lakehead</b>		
<b>Operations Personnel:</b> Operations Section Chief: <b>S. Crawford/ A. McBath (T) Day    Night Ops: F. Berbena</b> Branch Director: Division/Group Supervisor: <b>J. Price (T)</b>							
<b>Resources Assigned:</b>		<b>** Resources Below in Bold are 12 Hour **</b>				<b>Reporting Location, Special Equipment, Remarks, Notes, and Information Time                                    Location</b>	
Resource Identifier	ALS	Leader	Personnel	Request #	<b>Lakehead Camp</b>		

**Work Assignments:**

**Special Instructions:**

Communications (radio and/or phone contact numbers needed for this assignment):							
Name	Ch	Function	Rx Freq	Rx Tone	Tx Freq	Tx Tone	Notes
IA CMD	1	COMMAND	154.4300	136.5	159.0150	123.0 (T2)	(T2) BASS MTN
ALCORD	15	MEDICAL	156.0750	156.7 (T6)	156.0750	156.7 (T6)	MEDICAL
G CDF T17	6	A-G	159.3150	192.8	159.3150	192.8	A-G CDF TAC 17
JARD	16	EMERGENCY	168.6250	0	168.6250	110.9	EMERGENCY USE ONLY

<b>Prepared by: Name:</b> S 204	Jordan Weber	Pos/Title: RESL(T)	Date/Time: 8/14/2018    2216 hrs
<b>Signature:</b>			

# ICS 205 - INCIDENT RADIO COMMUNICATIONS PLAN

CONTROLLED UNCLASSIFIED  
INFORMATION/BASIC


<b>1. Incident Name:</b>		<b>2. Date/Time Prepared</b>		<b>3. Operational Period:</b>	
Carr		Date: 08/14/2018		Date To: 08/16/18	
Branches I, IV, V, and West Cont.		Time: 1830		Time To: 0700	

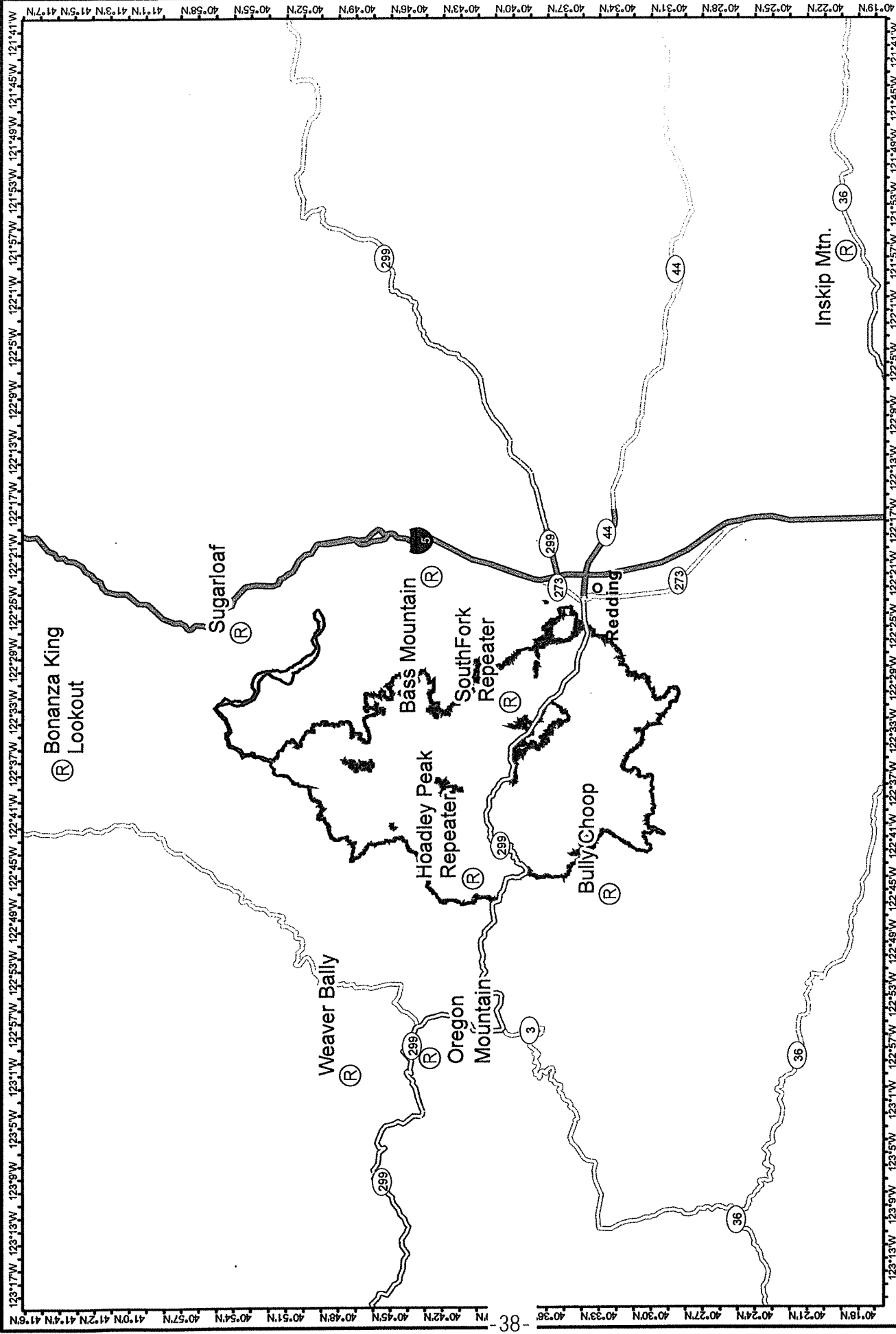
Ch#	Function	Name	Assigned To	Rx Freq	Rx Tone	Tx Freq	Tx Tone	Notes
1	COMMAND	SHA CMD	ALL DIVISIONS	154.4300	136.5	159.0150	123.0 (T2)	(T2) BASS MTN
2	COMMAND	SHA CMD T4	ALL DIVISIONS	154.4300	136.5	159.0150	136.5 (T4)	(T4) INSKIP MTN
3	COMMAND	SHA CMD T14	ALL DIVISIONS	154.4300	136.5	159.0150	151.4 (T14)	(T14) HOADLEY MTN
4	COMMAND	SHA CMD T15	ALL DIVISIONS	154.4300	136.5	159.0150	162.2 (T15)	(T15) SUGARLOAF MTN
5	COMMAND	SHA CMD T9	ALL DIVISIONS	154.4300	136.5	159.0150	100.0 (T9)	(T9) BULLY CHOOP MTN
6	A-G	A-G CDF T17	ALL DIVISIONS	159.3150	192.8	159.3150	192.8	A-G CDF TAC 17
7	TACTICAL	VFIRE 23	DIV T/U/N/X/Y	154.2950	156.7 (T6)	154.2950	156.7 (T6)	
8	TACTICAL	VFIRE 24	DIV M	154.2725	156.7 (T6)	154.2725	156.7 (T6)	
9	TACTICAL	VFIRE 25	UNASSIGNED	154.2875	156.7 (T6)	154.2875	156.7 (T6)	
10	TACTICAL	VFIRE 26	DIV P/S	154.3025	156.7 (T6)	154.3025	156.7 (T6)	
11	TACTICAL	NIFC T5	CONTINGENCY	166.7250	131.8 (T3)	166.7250	131.8 (T3)	
12	TACTICAL	NIFC T6	DIV O	166.7750	131.8 (T3)	166.7750	131.8 (T3)	
13	TACTICAL	NIFC T7	DIV N	168.2500	131.8 (T3)	168.2500	131.8 (T3)	
14	TACTICAL	CDF T32	UNASSIGNED	151.2425	192.8 (T16)	151.2425	192.8 (T16)	
15	MEDICAL	CALCORD	ALL DIVISIONS	156.0750	156.7 (T6)	156.0750	156.7 (T6)	MEDICAL
16	EMERGENCY	GUARD	ALL DIVISIONS	168.6250	0	168.6250	110.9	EMERGENCY USE ONLY
17								
18								
19								
20	EMERGENCY	GUARD	ALL DIVISIONS	168.6250	0	168.6250	110.9	EMERGENCY USE ONLY

**5. Special Instructions**

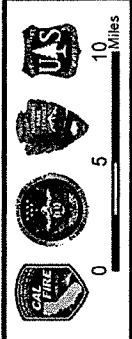
<b>6. Prepared by (Communications Unit Leader):</b> Name: Tom Webb		Signature: <i>Tom Webb</i>	
<b>ICS 205 - CONTROLLED UNCLASSIFIED INFORMATION//BASIC</b>		Date/Time: 08/14/18 1830	

# ICS 205 - INCIDENT RADIO COMMUNICATIONS PLAN

<b>1. Incident Name:</b> Carr Branches II, III, and Supp Repair		<b>2. Date/Time Prepared</b> Date: 08/14/2018 Time: 1830		<b>3. Operational Period:</b> Date From: 08/15/18 Time From: 0700 Date To: 08/16/18 Time To: 0700				
<b>4. Communications</b>								
Ch#	Function	Name	Assigned To	Rx Freq	Rx Tone	Tx Freq	Tx Tone	Notes
1	COMMAND	SHA CMD	ALL DIVISIONS	154.4300	136.5	159.0150	123.0 (T2)	(T2) BASS MTN
2	COMMAND	SHA CMD T4	ALL DIVISIONS	154.4300	136.5	159.0150	136.5 (T4)	(T4) INSKIP MTN
3	COMMAND	SHA CMD T14	ALL DIVISIONS	154.4300	136.5	159.0150	151.4 (T14)	(T14) HOADLEY MTN
4	COMMAND	SHA CMD T15	ALL DIVISIONS	154.4300	136.5	159.0150	162.2 (T15)	(T15) SUGARLOAF MTN
5	COMMAND	SHA CMD T9	ALL DIVISIONS	154.4300	136.5	159.0150	100.0 (T9)	(T9) BULLY CHOOP MTN
6	A-G	A/G CDF T17	ALL DIVISIONS	159.3150	192.8	159.3150	192.8	A-G CDF TAC 17
7	TACTICAL	CDF T26	DIV H / I	159.2925	192.8 (T16)	159.2925	192.8 (T16)	
8	TACTICAL	CDF T27	DIV D / F	159.3075	192.8 (T16)	159.3075	192.8 (T16)	
9	TACTICAL	CDF T28	FIRING GRP	151.1825	192.8 (T16)	151.1825	192.8 (T16)	
10	TACTICAL	CDF T29	UNASSIGNED	151.3475	192.8 (T16)	151.3475	192.8 (T16)	
11	TACTICAL	CDF T30	DIV B / C	151.3925	192.8 (T16)	151.3925	192.8 (T16)	
12	TACTICAL	VTAC11	UNASSIGNED	151.1375	156.7 (T6)	151.1375	156.7 (T6)	
13	TACTICAL	VTAC12	DIV A	154.4525	156.7 (T6)	154.4525	156.7 (T6)	
14	TACTICAL	VTAC13	SUP. REPAIR	158.7375	156.7 (T6)	158.7375	156.7 (T6)	
15	MEDICAL	CALCORD	ALL DIVISIONS	156.0750	156.7 (T6)	156.0750	156.7 (T6)	MEDICAL
16	EMERGENCY	GUARD	ALL DIVISIONS	168.6250		168.6250	110.9	EMERGENCY USE ONLY
17								
18								
19								
20	EMERGENCY	GUARD	ALL DIVISIONS	168.6250		168.6250	110.9	EMERGENCY USE ONLY
<b>5. Special Instructions</b>								
<b>6. Prepared by (Communications Unit Leader):</b> Name: Tom Webb				Signature: 				
<b>ICS 205 - CONTROLLED UNCLASSIFIED INFORMATION//BASIC</b>				Date/Time: 08/14/18 1830				



Carr Fire  
CA-SHU-007808  
**COMMS**



**Communication Map**  
**Carr Fire**  
CA-SHU-007808



## AIR OPERATIONS SUMMARY ICS-220

**Incident Name and Incident Number**  
 CARR INC CASHU007808

**General Remarks, Safety Notes, Hazards, Air Operations Special Equipment, etc.**  
 TRACK ALL DIPSITE LOCATIONS / NUMBER OF DIPS / GALLONS TAKEN.  
 TRACK ALL DROP LOCATIONS / NUMBER OF DROPS / GALLONS DROPPED  
 ALL GPS DATA TO BE COLLECTED IN DEGREES, MINUTES, DECIMAL MINUTES FORMAT.  
 AVOID Aerial Application of Retardant / Foam / Agent within 300' of Waterways, Bodies of Water, etc.  
 If Retardant / Foam / Agent is Dropped Within These Areas Immediately Notify the AOB/D and Provide the Following  
 Information: Lat / Long, Estimated Number of Gallons and a Map Detailing The Area.

**Time Prepared**  
 1200  
**Shutdown**  
 2039

**Date Prepared**  
 Tuesday, August 14, 2018  
**Operational Period - Date**  
 Wednesday, August 15, 2018

**Prepared By**  
 T. Smith  
**Operational Period - Time**  
 0700-0700

**Helibase Information**  
 Name: Mountain Gate HB  
 40° 42.30 122° 20.46  
 Name: Weaverville HB  
 40° 42.82 122° 55.33  
 (use page 2 if needed)

**Rescue Ship Information**  
 Name: G-841  
 Phone: (805) 540-0334  
 Make/Model: HH-60  
 Location: RDD  
 Request Procedure for These Aircraft: RDD  
**TFR Information**  
 Request #: A-363  
 Polygon: NM  
 Radius: 11000' MSL  
 Altitude: N/A Lat Long  
 Centerpoint: N/A  
 NOTAMS: 8/6755  
 Frequency: 118.075  
 http://tfr.faa.gov/tfr2/list.html

Frequencies	RX	Tone	TX	Tone	AM / FM	Position	Name	Phone	Trainee Name	Phone
AIR TACTICS	163.5750		163.5750		FM	AOBD	T. Stepanovich	(323) 819-5369		
AIR / AIR Rotary Wing	118.0750		118.0750		AM	ASGS	M. Hill	(530) 859-1087	T. Smith	(530) 864-5040
AIR / AIR - Briefing	118.7250		118.7250		AM	HEBM	P. York/J. Collins	(530) 386-2147	G. Bell	(408) 799-4196
AIR / GROUND	159.3150	192.8 (16)	159.3150	192.8 (16)	FM	ATGS	S. Brockman	(530) 277-2888		
SHA CMD (COMMAND)	154.4300	136.5 (4)	159.0150	T-2,4,14,15	FM	HLCO	A. Lujan	(530) 925-0934	N. Clements	(619) 742-8428
TOLC Mtn Gate	123.0250					HLCO	R. Yriguez	(530) 605-6376		
TOLC Weaverville	118.0250		123.0250		AM	AAML	T. Shiffer	(530) 515-4440		
DECK Weaverville/Mtn Gate	168.3500		118.0250		AM	Guard		(650) 245-1715		
			168.3500		FM	CALCORD		168.625	168.625 (110.9)	Emergency
								156.075	156.075	156.7 (6)

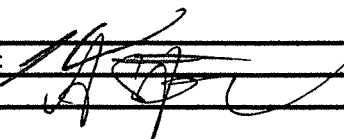
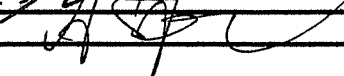
### HELICOPTERS ( Use page 2 if Needed )

FAA #	Type	Make/Model	Helibase	Avail	Start	Remarks / A - #	FAA #	Type	Make/Model	Helibase	Avail	Start	Remarks / A - #
N707AH	3	407	Mountain Gate	800	900	A-386	G-821	1	UH-60	Mountain Gate	800	900	A-356
N988B	3	206L4	Mountain Gate	800	900	A-44	G-824	1	UH-60	Mountain Gate	800	900	A-393
N242BH	3	206L1	Mountain Gate	800	900	A-105							
N913RL	3	B206	Mountain Gate	800	900	A-242	G-841	1	UH-60	RDD	24hr	24hr	A-245 (24hr Hoist ALS)
C-101	2	UH-1H	Mountain Gate	800	900	A-375							
N205TK	2	B205++	Mountain Gate	800	900	A-41							
N3276T	2	UH-1H	Mountain Gate	800	900	A-141 Restricted							
N940AA	1	UH-60	Mountain Gate	800	900	A-38							
N4035S	1	S-64	Weaverville	800	900	A-5							
N9962R	1	S-64	Weaverville	800	900	A-16							
N9122Z	2	212	Weaverville	800	900	A-95 UNAVAILABLE							
N623PD	3	ASTAR	Weaverville	800	900	A-43			40* 58.965 122*41.623				TRINITY MRB

### FIXED WING ( Use Page 2 if Needed )

FAA #	Type	Make/Model	Base	Avail	Start	Remarks	FAA #	Type	Make/Model	Base	Avail	Start	Remarks

# MEDICAL PLAN (ICS 206)

1. Incident Name: <b>CARR INCIDENT</b>		2. Operational Period: Date From: 08/15/2018 Time From: 07:00		Date To: 08/16/2018 Time To: 07:00			
3. Medical Aid Stations:		MEDICAL UNIT LEADER: <u>(408) 710-7196</u>		COMMUNICATIONS UNIT: <u>(530) 949-6816</u>			
Name	Location	Contact Number(s)/Frequency	Paramedics on Site?				
MERT	BASE CAMP (BY CDC SLEEPING AREA)	(530) 310-0716	RN & PA				
EXPEDITORS	ANDERSON FAIRGROUNDS (NEAR BRIEFING)	---	NONE				
FRONTLINE MEDICAL	RED BLUFF FAIRGROUNDS	(530) 604-8380	PARAMEDICS				
4. Transportation (indicate air or ground):							
Ambulance Service	Location	Contact Number(s)/Frequency	Level of Service				
AMR MEDIC 145 (GROUND)	DP 55	SHASTA COMMAND	ALS				
MERCY MEDIC 115 (GROUND)	LAKEHEAD	SHASTA COMMAND	ALS				
TRINITY MEDIC 8	FAIRVIEW MARINA, TRINITY COUNTY	SHASTA COMMAND	ALS				
REACH AIRSHIP 5	1524 East St. Redding	(877) 939-6300	RN				
PHI AIR MED	5900 Old Oregon Trail Redding	(800) 597-9571	RN				
CHP 14 & 16 (HOIST)	2651 Gold Street (Benton Airpark), Redding	(530) 225-2040	ALS / HOIST				
CALFIRE COPTER 101 (HOIST)	MOUNTAIN GATE HELIBASE	(530)680-4631	BLS DAY HOIST				
NATIONAL GUARD 841	REDDING MUNI HELIBASE	(805)540-0334	24 HOUR ALS HOIST				
5. Hospitals:							
Hospital Name	Address, Latitude & Longitude if Helipad	Contact Number(s)/ Frequency	Travel Time		Trauma Center	Burn Center	Helipad
			Air	Ground			
SHASTA REG MED CTR MED 2	1100 BUTTE ST, REDDING 40° 35.106'N, 122° 23.268'W	(530) 244-5400 468.025 Tx, 468.025 Rx PL 5	10 MIN	29 MIN	YES LEVEL: 3	NO	YES
MERCY MED CTR MED 4	2175 ROSALINE AVE, REDDING 40° 34.332'N, 122° 23.796'W	(530) 225-7201 468.075 Tx, 463.000 Rx PL 5	10 MIN	29 MIN	YES LEVEL: 2	NO	YES
UC DAVIS MED 8	2315 STOCKTON BLVD SACRAMENTO 38° 33.360'N, 121° 27.330'W	(916) 734-2011 446.525 Tx, 203.5 Rx	1.25 HOUR	3.5 HOUR	YES Level: 1	YES	YES
TRINITY HOSPITAL WEAVERVILLE	60 EASTER AVENUE WEAVERVILLE N40° 44.275' W122°56.359'	(530)623-5541 x1	20 MIN	45 MIN	NO	NO	YES
6. Special Medical Emergency Procedures: <b>LINE EMERGENCY:</b> Crew Supervisor to contact Division Supervisor with patient complaint/condition, location, and resource needs.			<b>BASE CAMP EMERGENCY:</b> <b>CONTACT COMMUNICATIONS UNIT AT: (530) 949-6816</b> report patient complaint/condition and location. Medical Staff will respond to stabilize incident				
<ul style="list-style-type: none"> <li>Division Supervisor contacts and gives report on conditions, complaint/condition, and resource needs to:                             <ol style="list-style-type: none"> <li>Nearest Line FEMT/FEMP</li> <li>Communications Unit</li> </ol> </li> <li>Emergency or Priority traffic received: Communication Unit will clear the command channel for emergency traffic only, for the duration of the MAJOR IWI</li> <li>Communications Unit will make proper notifications</li> <li>OPERATIONS can declare a MAJOR IWI based on the report on conditions from the division supervisor</li> <li>Division Supervisor or designee will serve as point of contact (IWI SUPERVISOR) and run the emergency utilizing the <u>COMMAND CHANNEL</u> and <u>CALCORD</u> for the tac net during the IWI</li> </ul>			<ul style="list-style-type: none"> <li>COMMUNICATIONS Unit contacts:                             <ol style="list-style-type: none"> <li>Operations</li> <li>Medical</li> <li>Safety</li> <li>Logistics</li> </ol> </li> </ul>				
<b>**ALL EMERGENCIES: Secure the area and identify witnesses for later investigation. Keep an accurate log of events**</b>  <b>***START 20 MINUTE TIMER IF IWI***</b>			<b>INJURY REPORTING PROCEDURES</b> CHIEF COMPLAINT _____ LOCATION OF PATIENT _____ TRANSPORT REQUEST BY: AIR ___ GROUND ___ DIVISION _____ CREW _____ POINT OF PICKUP _____ LAT _____ LONG _____ IS EMT WITH THE PATIENT: YES ___ NO ___ AGE _____ SEX: MALE ___ FEMALE ___ **Pre-determined rendezvous location for transfer from rescue helicopter to ground ambulance or air ambulance: Mountain Gate HELIBASE**  <div style="text-align: center;">                     N 40°42.30 W 122°20.46                      14324 Wonderland BLVD.                      REDDING, 96003                 </div>				
7. Prepared by (Medical Unit Leader): Name: JESSE WINNEN			Signature: 				
8. Approved by (Safety Officer): ANTHONY STORNETTA			Signature: 				
ICS 206	IAP Page _____	Date/Time: 08/14/2018 1710					



# STRUCTURE DEFENSE GUIDE

## STRUCTURE TRIAGE DECISION PROCESS (S-FACTS)

### SURVIVAL

- Initial Assessment: can you survive here? **If not, LEAVE NOW!**
- Is there a Safety Zone nearby? **If not, LEAVE NOW!** (IRPG)
- Do you have a viable Escape Route?
- What is the decision point at which you will leave based on fire behavior and rate of spread?
- Is there a Temporary Refuge Area (TRA) on site? **If not, LEAVE NOW!**
  - Preplanned area for immediate, temporary refuge
    - Use of fire shelter should not be necessary
  - Is there a viable Escape Route to the TRA or Safety Zone?
- Is "Prep and Go" tactic an option?
- Do you have communications with your supervisor and adjoining forces?
- If safety issues cannot be mitigated, **LEAVE NOW!**

### FIRE ENVIRONMENT

- Can you survive based on current and expected fire behavior? **If not, LEAVE NOW!**
- Look up, Look Down, Look Around Indicators:
  - Fuels (characteristics, moisture, temperature)
    - What will the intensity of the fire be when it arrives?
    - How long will it take to consume the fuels?
  - Wind
    - Current speed/direction
    - Expect changing winds
  - Terrain
    - Are you in a chute, chimney, or saddle? **If yes, LEAVE NOW!**
    - Is wind in alignment with topography?
    - What is your position relative to topography?
    - Are you mid slope or on top of a ridge?
  - Atmospheric Stability
  - Fire Behavior (requires constant monitoring)
    - Spotting, crowning, sheeting, rate of spread?
    - Flame length and height?
- Other weather considerations:
  - What is the current relative humidity?
    - Is there an expected change?
  - Are thunderstorms forecasted?

### ACCESS

- Is access compatible with time and distance factors necessary to utilize as an Escape Route to a Safety Zone?
  - Road surface adequate for speed necessary?
  - Adequate width?
  - Turnaround/turnouts?
  - Bridges within limits for fire apparatus?
  - Drainage ditches/culverts?
  - Steep grades?
  - Is there a safe place to spot apparatus?

## CONSTRUCTION/CLEARANCE

- Does the structure have adequate defensible space, based on topography, fuels, and current and expected fire behavior?
- Can defensible space problems be mitigated quickly?
- Will building materials and yard clutter compromise safety?
- Is the construction wood siding or shake shingle roof?
- Are there vent openings, open eaves, large glass windows facing fire front, decks with vegetation below?
  - Will ember intrusion through attic or foundation vents be a problem?
- What are the contents in the garage and outbuildings?
- Are there hazardous materials present?
- Are there propane tanks, fuel tanks, or power lines?
- Is there an adequate water supply nearby?
- Are additional resources needed to mitigate issues?
- Consider "Prep and Go" or "Prep and Defend" tactics

## TIME CONSTRAINTS

- Is there time for an adequate size up of the structure defense problem?
- Is there time to mitigate safety concerns?
- Is there time and adequate resources to properly prepare and defend the structure?
- Is there time to escape, utilizing Escape Routes, to a Safety Zone? **If not, LEAVE NOW!**

## STAY OR GO

- Tactical decision based on the S-FACTS
- Is it safe to stay? If no, utilize "Check and Go" tactic
- Is there time to prepare the structure for defense and what will the fire behavior be when the fire gets here?
- "Prep and Go" or "Fire Front Following" tactics should be used when it is not safe to "Prep and Defend"

## STRUCTURE TRIAGE CATEGORIES

### **Not-Threatened**

- Safety Zone nearby and TRA present at structure
- Construction features/defensible space make the structure unlikely to ignite
- Residents may/may not have evacuated

### **Threatened Defensible**

- Safety Zone nearby and TRA present at structure
- Construction features/defensible space require structure defense tactics during fire front impact
- Residents may/may not have evacuated

### **Threatened non-Defensible**

- Lack of adequate Safety Zone nearby
- Structure cannot be safely defended
- Residents must be evacuated

## ENTRAPMENT AVOIDANCE

- Are you adhering to the **10 Standard Firefighting Orders?** (IRPG)
- Have you considered the **18 Situations that Shout Watch Out?**
- Have you considered the **Common Denominators of Fire Behavior on Tragedy Fires?** (IRPG)
- Are you maintaining **LCES?** (IRPG)
- Look Up, Look Down, Look Around (IRPG)
- Have Decision Points ("Trigger Points") been established?
- Conduct Risk Management (IRPG)
  - Situational Awareness – Hazard Assessment – Hazard Control – Decision Point – Evaluate



# FIRING OPERATION CHECKLIST

Location: \_\_\_\_\_

Date: \_\_\_\_\_

Time: \_\_\_\_\_

Firing Supervisor \_\_\_\_\_

## 1. Personnel Briefing

- Objectives
- Conditions (fire environment)
- Resource assignments identified
  - Firing personnel
  - Holding forces
  - Lookouts
- Ignition plan/sequence
- Communication Plan
- Contingency Plan
- Safety issues

## 2. Go / No-Go

- All personnel briefed
- Weather forecast reviewed
- Resources in place
- Lookouts posted as needed
- Anchor and termination firing points identified
- Communications systems in place
- Fire behavior forecast reviewed
- Escape routes and safety zones established and made known
- Adjoining forces/Air Attack notified

## 3. Approval Prior To Firing

- Division Supervisor
- Branch Director
- Operations

## 4. Other Notifications

- Other: \_\_\_\_\_
- Other: \_\_\_\_\_

Attach Firing Operations Checklist to ICS-214

Rev: Ops Group February 8, 2011-43-



# CARR FIRE

CA-SHU-007808

## FINANCE MESSAGE

- Finance Section is located in Fusaro Building
  - Please come by the Time Unit and start your and update your FC-33
  - Vendors please drop off your agreements to the Time Unit
  - Shift Tickets need to be completed by line supervisor and turned in at the end of each shift.
  - All injuries need to be reported to the COMP / CLAIMS Unit
  - All property Damage must be reported and documented
  - Please report any Vehicle Damage this includes Rental Vehicles
  - Local Government please check in with OES
  - Federal Time: Timekeeper on site.
  - **OFF-SITE FEEDING IS NOT APPROVED**
  - Water usage report needs to be turned in daily to the COMP / CLAIMS Unit
- 
- **This fire is under Cost Apportionment**
    - **All DIVS, OPBD, STAM need to debrief with the Cost Apportionment Team Daily**
    - Cost Apportionment is located in the trailer directly across from Fusaro Hall

## **INCIDENT BILLING INFORMATION**

### **CAL FIRE – SHASTA / TRINITY UNIT**

875 CYPRESS AVE.  
Redding Ca. 96001

Index Code: 2400

E-fund Billing Code: 013860

Federal P Cod<sup>-</sup><sub>-44-</sub> PPL1A6 (1502) [P]







# SHIFT TICKET EXAMPLE

EMERGENCY SHIFT TICKET and EVALUATION FORM					Contractor Name H2O DUDE						
Incident or Project Name LILAC INC		Incident Number CAMVU 024612	Request Number E or S # Here		Operator #1 BOB SMITH	Operator #2					
Agreement Number XXX - 000000 - 00					Operator Furnished By: <input checked="" type="checkbox"/> Contractor <input type="checkbox"/> Government						
Equipment Make FREIGHTLINER		Equipment Model / Type WATER TENDER 2500+ TYPE 1			Operating Supplies Furnished By: <input checked="" type="checkbox"/> Contractor <input type="checkbox"/> Government						
Serial Number LAST 8 OF VIN#		Licence Number 55555555			Equipment Status <input checked="" type="checkbox"/> Inspected <input checked="" type="checkbox"/> Under Agreement						
Equipment Use (Circle) <u>Hours</u> Days / Miles					Released by Government Withdrawn by Contractor						
Date Mo / Day	Start	Stop	Work	Assignment	Remarks/Comments **  <b>ONE OPERATOR</b>						
12/8	0001	0700	7	OFF SHIFT							
12/8	0700	1900	12	BASE CAMP							
12/8	1900	2400	5	OFFSHIFT							
Vendor Rating					Govt. Rep. Name and Position - PRINT Mike Weber						
<table border="1"> <tr> <td>Poor*</td> <td>Avg.</td> <td>Good</td> <td>Exc.</td> <td>N/A</td> </tr> </table>					Poor*	Avg.	Good	Exc.	N/A	Govt. Rep. Signature Mike Weber	
Poor*	Avg.	Good	Exc.	N/A							
Met Performance Expectations					Contractor Signature Bob Smith						
Equipment in Safe Working Condition					Date 08/04/15						
Operator Skill Level					Time 0800						
Operates Safely					Date 08/04/15						
Operator's Cooperation Level					Time 0800						
Overall Performance					CALFIRE 297 (Rev 3-2011)						
* NOTE: Any rating of POOR requires an explanation in Comment Section.											
**Final evaluation or for more documentation, use an ICS Form 230 or equivalent.											
Pink - Finance		Blue - Home Unit HE Coordinator		Yellow - Vendor		White - Govt Representative					

EMERGENCY SHIFT TICKET and EVALUATION FORM					Contractor Name WATER GUY						
The responsible Government Officer will complete this form each shift.					Operator #1 BOB SMITH						
Incident or Project Name LILAC INC		Incident Number CAMVU 024612	Request Number E OR S # Here		Operator #2 BILL SMITH						
Agreement Number XXX - 000000 - 00					Operator Furnished By: <input checked="" type="checkbox"/> Contractor <input type="checkbox"/> Government						
Equipment Make PETERBUILT		Equipment Model / Type WATER TENDER 2500 + TYPE 1			Operating Supplies Furnished By: <input checked="" type="checkbox"/> Contractor <input type="checkbox"/> Government						
Serial Number LAST 8 OF VIN#		Licence Number 99999999			Equipment Status <input checked="" type="checkbox"/> Inspected <input checked="" type="checkbox"/> Under Agreement						
Equipment Use (Circle) <u>Hours</u> Days / Miles					Released by Government Withdrawn by Contractor						
Date Mo / Day	Start	Stop	Work	Assignment	Remarks/Comments **  <b>2 OPERATORS</b>						
12/8	0700	2400	17	DIV M							
12/9	0001	0700	7	DIV M							
Vendor Rating					Govt. Rep. Name and Position - PRINT Mike Weber						
<table border="1"> <tr> <td>Poor*</td> <td>Avg.</td> <td>Good</td> <td>Exc.</td> <td>N/A</td> </tr> </table>					Poor*	Avg.	Good	Exc.	N/A	Govt. Rep. Signature Mike Weber	
Poor*	Avg.	Good	Exc.	N/A							
Met Performance Expectations					Contractor Signature Bob Smith						
Equipment in Safe Working Condition					Date 08/04/15						
Operator Skill Level					Time 0800						
Operates Safely					Date 08/04/15						
Operator's Cooperation Level					Time 0800						
Overall Performance					CALFIRE 297 (Rev 3-2011)						
* NOTE: Any rating of POOR requires an explanation in Comment Section.											
**Final evaluation or for more documentation, use an ICS Form 230 or equivalent.											
Pink - Finance		Blue - Home Unit HE Coordinator		Yellow - Vendor		White - Govt Representative					

**Turn shift tickets into Finance.**



# PUBLIC INFORMATION SECTION



Incident Information Line: (530) 225-2510  
Incident Media Line: (530) 448-2466

Email Updates (sign up):  
[www.tinyurl.com/carrfire](http://www.tinyurl.com/carrfire)

STATUS	
Incident Start Date: 7/23/2018	Incident Start Time: 1:15 PM
Cause: Mechanical Failure of Vehicle	Acres:
Containment:	Total Personnel:

**MEDIA** – The California State Penal Code Section 409.5(d) allows the news media to enter scenes of disaster, riot or civil disturbance. Properly identified members of the news media should not be restricted from entering locations specified within the code. However, this does not include crime scenes, private property and does not imply that the news media may interfere with incident operations while they are in the areas of concern. More information can be found [here](#).



**CAL FIRE SOCIAL MEDIA POLICY** – When assigned to a CAL FIRE incident, you will adhere to the CAL FIRE Social Media Policy, Section 0691. You can find further information about the CAL FIRE Social Media Policy [here](#).



**PHOTOGRAPHS AND VIDEOS OF INCIDENT** – We are in a new era of media. Media no longer means news/broadcast industry, but now refers to anyone that has the capability to shoot video, photographs and post them onto social media sites in a matter of minutes. Unfortunately, we have seen some instances of photographs or videos that have depicted unsafe, unprofessional or embarrassing circumstances which are a serious breach of ethics. When this happens, it reflects poorly on all that are attached to this incident. Posting an inappropriate video, photo or blog comment could expose oneself to unwanted ramifications. It may be unsafe to shoot photos or video and a firefighter who is concentrating on a camera loses their situational awareness.

The Public Information Office would like copies of the video and pictures that you safely took while not in an emergency situation, fire suppression activity or in an overhead assignment. Bring your video and pictures to the Public Information trailer; they will be reviewed and possibly uploaded to our many CAL FIRE social media sites. Remember, we don't want photographs or videos that depict unsafe, unprofessional or embarrassing circumstances, which are a serious breach of ethics.

**LOST AND FOUND** – The Information Section will manage lost and found items for the incident. If you have lost an item please leave your contact information and what you have lost at the Information Section. If you have found an item on the incident, bring the item to the Information Section with your contact information as well.

**MAIL SERVICE** – The Information Section can assist you with sending and receiving mail. The address is Shasta District Fairgrounds 1890 Briggs St. Anderson CA. 96007

# DEMOBILIZATION INSTRUCTIONS

## CARR

### CA-SHU-007808

#### DEMOB PROCEDURES

- CHECK THE DEMOB LIST EACH MORNING. YOU CAN FIND THE DEMOB LIST THROUGH THE “QR” CODE ON THE I.A.P. COVER OR ON LISTS POSTED THROUGHOUT CAMP. **ONLY REPORT TO DEMOB AT YOUR SCHEDULED TIME.** EARLY ADMITTANCE WILL NOT BE ALLOWED.
- **FLIGHT ARRANGEMENTS MUST BE MADE 48HRS PRIOR TO RELEASE.**
- REPORT TO DEMOB AT APPOINTMENT TIME TO RECEIVE A CHECKOUT FORM (ICS-221), THEN GO TO THE FOLLOWING UNITS TO OBTAIN THE NECESSARY SIGNATURES:
  - ✓ SUPPLY UNIT
  - ✓ COMMUNICATIONS UNIT
  - ✓ GROUND SUPPORT/VEHICLE INSPECTION\*\*\*
  - ✓ DOCUMENTATION UNIT
  - ✓ TIME UNIT
  - ✓ TRAINING UNIT (IF APPLICABLE)
  - ✓ ACCOMMODATIONS (IF APPLICABLE)

#### \*\*\*VEHICLE INSPECTION:

- THE DEMOB UNIT WILL INFORM YOU IF THE VEHICLE NEEDS TO BE INSPECTED.
- YOU MUST HAVE THE ICS-221 DEMOB FORM WITH YOU AT VEHICLE INSPECTION.
- A VEHICLE INSPECTION TIME WILL BE PROVIDED WHEN YOU INITIALLY ARRIVE TO THE DEMOBILIZATION UNIT.
- **DO NOT REPORT FOR VEHICLE INSPECTION PRIOR TO YOUR APPOINTMENT**

**HAVE YOUR EQUIPMENT INVENTORY CARD READY WHEN HEADING TO VEHICLE INSPECTION.**

RETURN THE COMPLETED ICS-221 FORM TO THE DEMOB UNIT AND TRAVEL HOME SAFE!







# **TRAINING** **SPECIALIST MESSAGE**

OFFICE LOCATION IS IN THE FUSARO BUILDING

**TRAINEE'S:** PLEASE CLOSE OUT YOUR TRAINING PACKAGE **PRIOR** TO STARTING DEMOB. WHEN YOU COME TO THE **TRAINING SPECIALIST** TO **CLOSE** A FILE, YOU MUST BRING THE FOLLOWING ITEMS:

- TRAINER (EVALUATOR)
- YOUR **INITIATED** POSITION TASK BOOK IN FOR REVIEW. THE PTB MUST BE COMPLETED BY THE TRAINER (EVALUATOR)
- COMPLETED EVALUATION RECORD
- COMPLETED INDIVIDUAL PERFORMANCE EVALUATION (ICS 225).  
Please be specific to documenting tasks in the narrative section. This would include tasks such as: developing hoselays, handline construction, structure defense, briefings, logistical support, speaking with aircraft.

TNSP – Dave Randolph (805) 857-4820

## Peer Support Team Message:

CARR INCIDENT PEER SUPPORT: (916) 591-9004

The gravity of this event is large. Many of us have been impacted by the events that have occurred as well as past incidents.

A peer support team has been assembled and Peers are available at the ICP. The Peer Support contact number is (916)-591-9004, which is available 24/7.

Some of the signs and symptoms you may be experiencing include, but are not limited to:

Irritability, lack of sleep, quick to anger, withdrawal, above average tobacco use, an increase in negative coping mechanisms such as excessive alcohol and/or substance abuse. You might experience lack of appetite, isolate yourself, and various other unexplained responses to normal every day events.

You may not be experiencing these symptoms now or during this fire incident. However, you may find yourself experiencing them when you return to your home or unit. You may find yourself being triggered by a past event that has impacted you, while assigned to future incidents. A sight, sound, smell, or touch could trigger a memory that previously existed, but you may not have been aware of.

If you find yourself in this situation and need to talk to someone contact your Employee Assistance Program (EAP). EAP programs are here to help. It is important to be able to talk to someone and get stuff off your chest vs carrying this around for your career.

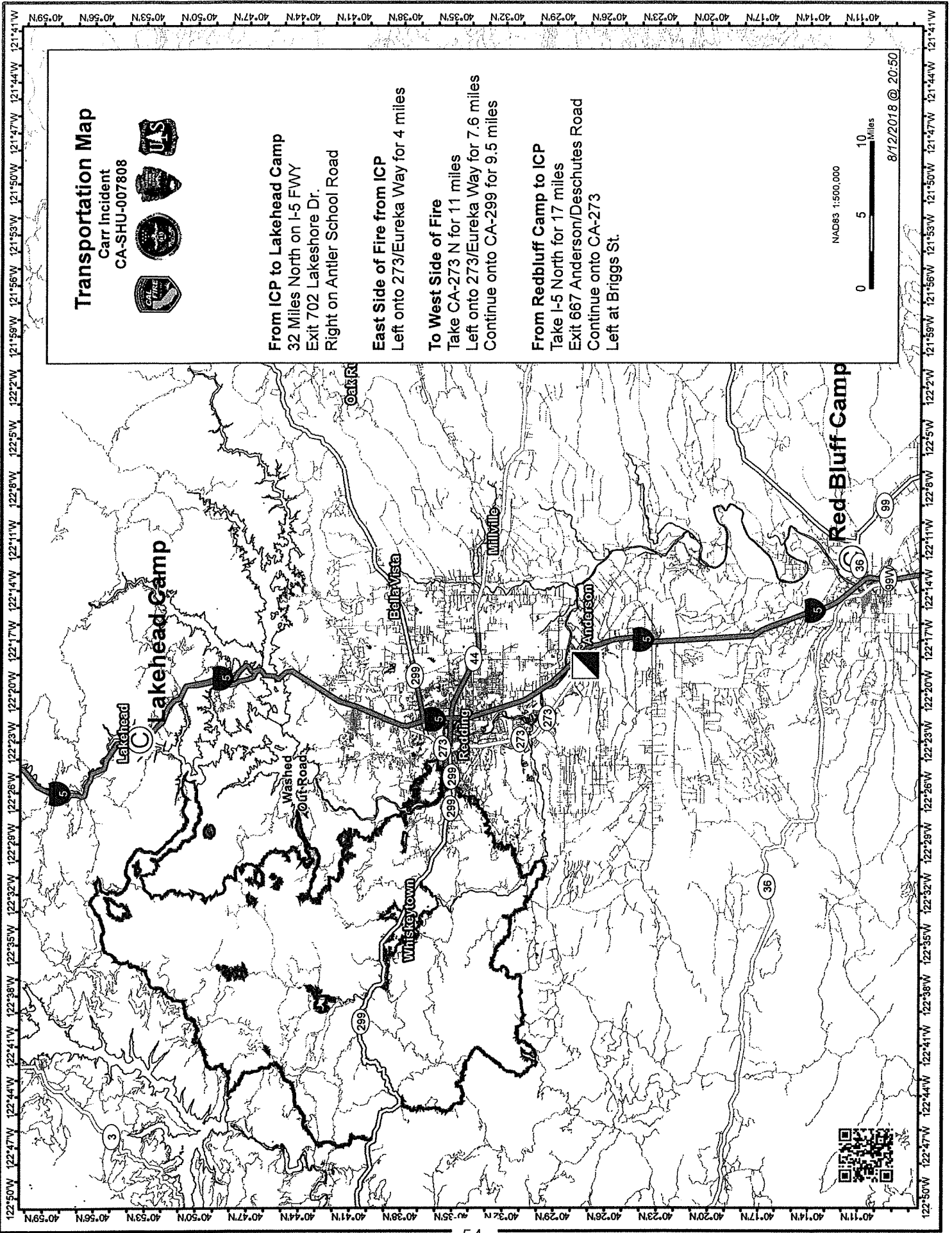
## **Cultural and Historic Properties: Fireline Guidance for the Carr Fire Shasta and Trinity Counties, CA**

**Do not compromise safety for the protection and preservation of archaeological and historic properties. When possible however:**

1. Be on the lookout for prehistoric and historic archaeological sites. These sites typically occur adjacent to springs, streams, and rivers but can occur in other areas as well. Prehistoric sites in this area include scatters of chipped stone flakes, circular depressions in the ground, and/or localized areas of dark soil. Gold Rush era historic mining sites include shallow test pits, horizontal adits, and vertical shafts, rock tailing piles, and/or water ditches. Late 19<sup>th</sup> century copper mining sites in the NE incident area include mine adits on the mountain sides, smelter-remains and home/cabin sites for workers near the Sacramento River, and aerial tramway towers (and cable) in between. Historic homestead sites marked by stone foundations, rock chimneys, wells, ditches, and/or old fruit trees can be found throughout the incident area. Several historic cemeteries are present as well.
2. Known sites will be flagged with pink and black striped or red and white striped plastic flagging tape. Note that much of the area has never been surveyed for archaeological resources and many sites out there have yet to be discovered or flagged.
3. If you observe archaeological resources, flagged or unflagged, attempt to avoid with ground disturbing activities altogether.
4. If avoidance is not possible, minimize ground disturbance. Use a hand crew rather than a dozer to remove fuels from control lines that must cross site areas if possible.
5. Leave all artifacts in place as they may have been intentionally placed there for religious or ceremonial reasons.
5. Note locations of discovered resources on a map. Better yet take site coordinates with a GPS. Leave information for the archaeologist with the Plans Unit so that the sites can be relocated and protected during Fire Suppression Repair. Use flagging to mark site.
6. If you encounter a burial or other human remains, cease ground disturbing work in the area and contact the archaeologist immediately.

Your help preserving California's non-renewable cultural resources is appreciated.

Richard Jenkins  
CAL FIRE Northern Region Archaeologist  
rich.jenkins@fire.ca.gov  
Cell: (530) 949-8822



# Transportation Map

Carr Incident  
CA-SHU-007808



**From ICP to Lakehead Camp**  
32 Miles North on I-5 FWY  
Exit 702 Lakeshore Dr.  
Right on Antler School Road

**East Side of Fire from ICP**  
Left onto 273/Eureka Way for 4 miles

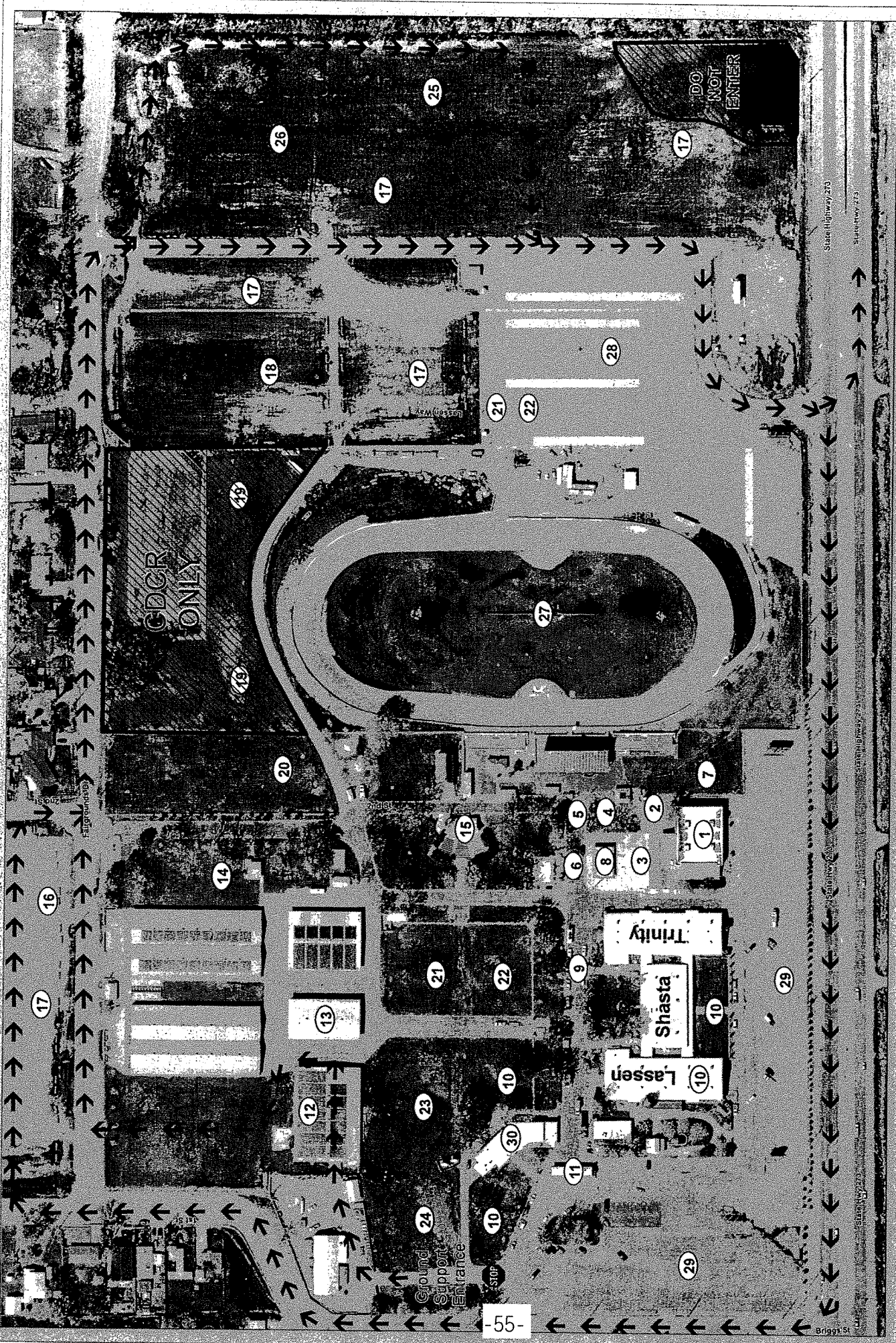
**To West Side of Fire**  
Take CA-273 N for 11 miles  
Left onto 273/Eureka Way for 7.6 miles  
Continue onto CA-299 for 9.5 miles

**From Redbluff Camp to ICP**  
Take I-5 North for 17 miles  
Exit 667 Anderson/Descutes Road  
Continue onto CA-273  
Left at Briggs St.

NAD83 1:500,000



8/12/2018 @ 20:50



NAD 1983 2011 California Teale Allens

# Facilities Map CARR INCIDENT CA-SHU-7808

- |                          |                   |                    |                       |                     |                       |
|--------------------------|-------------------|--------------------|-----------------------|---------------------|-----------------------|
| 1. Check-in/Finance      | 6. IC             | 11. PIO            | 16. Lunches/Water/Ice | 21. Laundry         | 26. Transport Parking |
| 2. Logistics- Facilities | 7. GIS            | 12. Ground Support | 17. Engine Parking    | 22. Showers         | 27. Crew Sleeping     |
| 3. Communications        | 8. Accomadations  | 13. Supply         | 18. CDCR Parking      | 23. Mobile Sleepers | 28. Crew Parking      |
| 4. Safety/OPS            | 9. OBS            | 14. Kitchen        | 19. CDCR              | 24. CCC Sleeping    | 29. Overhead Parking  |
| 5. Uason                 | 10. Crew Sleeping | 15. Briefing       | 20. MERT              | 25. Fuel            | 30. Rehab Lounge      |



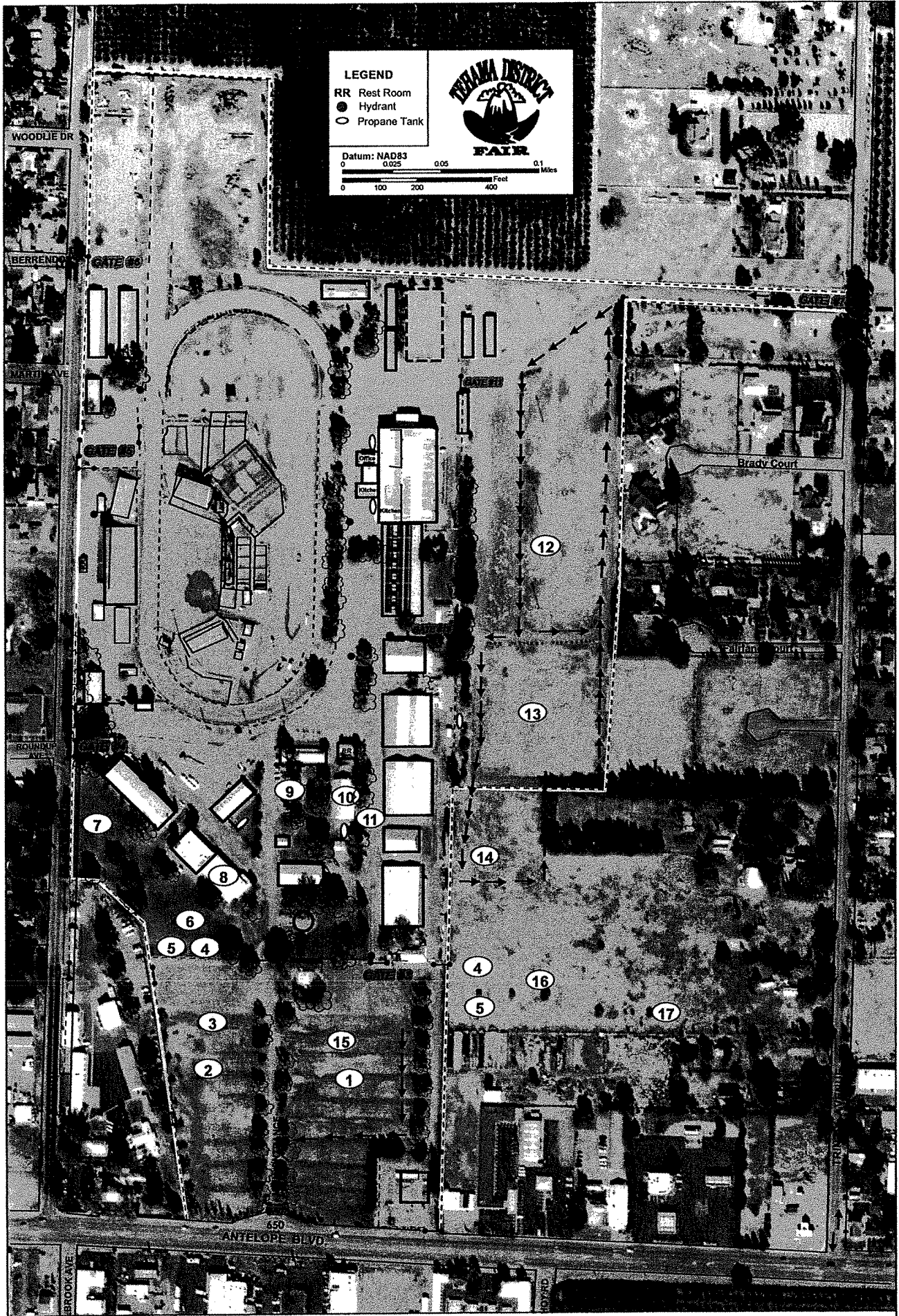


**LEGEND**

- RR Rest Room
- Hydrant
- Propane Tank

**TRIANA DISTRICT**  
**FAIR**

Datum: NAD83  
0 0.025 0.05 0.1  
0 100 200 400 Feet  
0 0.1 Miles



- 1. Engine Fuel
- 2. Engine Overhead Parking
- 3. Ice/Water/Lunches
- 4. Laundry
- 5. Showers
- 6. Tent W/AC Sleeping
- 7. Personnel Tents
- 8. LOGS
- 9. Food
- 10. Supply
- 11. Medical
- 12. National Guard Fuel
- 13. National Guard Parking
- 14. Kitchen
- 15. Engine Parking
- 16. Tents
- 17. Smaller Trailers
- \*Laundry/Showers Available to All

**Facilities Map**  
CJ-56-NCIDENT  
CA-SHU-7808





- |             |                |                        |
|-------------|----------------|------------------------|
| 1. Parking  | 5. Facilities  | 9. Lunch/Ice/Water     |
| 2. Laundry  | 6. Kitchen     | 10. Additional Parking |
| 3. Showers  | 7. Dining Hall | 11. Fuel               |
| 4. Sleeping | 8. Supply      | 12. Tent Sleeping      |

-57-

Facilities Map  
 Lakehead Camp  
 CARR INCIDENT  
 CA-SHU-7808



NAD 1983 3011 California Truck Alerts



# CARR INCIDENT LOGISTICS MESSAGE



## SERVICES SCHEDULE

Breakfast:	0500-1000
Dinner:	1700-2200
Sack Lunch Distribution:	0500-2100
Laundry Service:	0500-2300
Supply:	0600-2200
Saw Shop:	0600-2200
Showers:	0600-2300
Fuel:	24hr Service

## FUEL TRUCK LOCATIONS

Interstate Oil:	Incident Base
Cross Petroleum:	Incident Base
Mean Gene Gas:	Red Bluff
Redding Oil:	Lewiston, DP 24
SST Oil Truck #2:	French Gulch, DP 30
Ed Staubs and Son:	Lakehead

## REFRIDGERATION TRUCKS and HYDRATION STATIONS (ICE, WATER and GATORADE)

- DP 17, Igo Ono Elementary School
- DP 24, Lewiston
- DP 30, French Gulch
- DP 55, Division "C"



# ACTIVITY LOG (ICS 214)

1. Incident Name:

2. Operational Period: Date From:  
Time From:

Date To:  
Time To:

7. Activity Log (continuation):

Date/Time

Notable Activities

8. Prepared by: Name: \_\_\_\_\_

Position/Title: \_\_\_\_\_

Signature: \_\_\_\_\_

ICS 214, Page 2

Date/Time: \_\_\_\_\_

