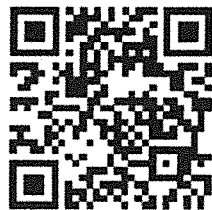


Carr
INCIDENT
#CA-SHU-007808
INCIDENT ACTION PLAN



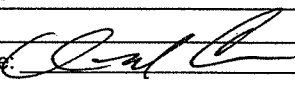
OPERATIONAL PERIOD

8/16/2018

to

8/17/2018

ORGANIZATION ASSIGNMENT LIST (ICS 203)

1. Incident Name: Carr		2. Operational Period: Date From: 8/16/2018 Time From: 0700		Date To: 8/17/2018 Time To: 0700	
3. Incident Commander(s) and Command Staff:			7. Operation Section:		
IC/UC's	B.Gouvea/ G. Bertelli (T)		Chief	T. Brownell/ A. McBeth (T) Day	
Deputy	M. Van Loben Sels/ S.Spinharney (T)/ B. Newburn (T)		Deputy	S. Crawford	
Safety Officer	B. Carter/ A. Stornetta (T)		Night Ops	F. Berbena	
Information Officer	E. Smith/ B. Mercado (T)				
	J. Clingingsmith (T)		Branch	I	E. Darnall
Liaison Officer	T.Crawford/ C. Dugger/		Division/Group	T/U/N/X/Y	L. Moore (Day)/ Segura (Night) (9331C)
	D. Pender/ B.Smith (T)		Division/Group		
4. Agency/Organization Representatives:			Branch	II	E. Darnall
Agency	Name		Division/Group	A	K. Harrison
Sierra Pacific Industries	N.Kroncki		Division/Group	B/C	J. Stone (9260C)
Shasta County SO	A.Bertain		Division/Group		
County Roads Dept.	(530) 225-5661		Branch	III	S. Ward
Cal OES AREP	P.Titus/ D. Franklin		Division/Group	D/F	J. Finney (9212C)
PG&E	M. Weaver		Division/Group	H//M	J. Fitzgerald
CDCR	M.Ahlin		Division/Group		
CCC	K. McDonald/ S. Borowski		Division/Group		
State Parks	A. Wright		Branch	IV	J. Campbell
CHP	S. Fredrick		Division/Group	N	K. Swope
Red Cross	R. Yoder		Division/Group	O	J. Hannan
WAPA	B. Adams		Division/Group	HERO Group	D. Sykes
BLM	J. Mata		Branch	V	S. Lauderdale
NPS	B. Love		Division/Group	P/S	L. Turman
5. Planning Section:			Division/Group		
Chief	M. Petro		Branch	Supp Repair	B. Rowe (12Hr)
Deputy	C. Carrera		Division/Group	Redding Group	M. Rosan (12Hr)
Resource Unit	Carlos/Corey/Reneau/Weber(T)		Division/Group	Lakehead Group	J. McElroy (12Hr)
Situation Unit	R. DeCamp/ J. Henderson		Division/Group	Shasta Group	T. Lucas (12Hr)
Documentation Unit	J.Patterson		Division/Group	Trinity Group	B. Rodgers (12Hr)
Demobilization Unit	T. Shevenell/ A. Klem		Division/Group	Ono Group	D. Dresselhaus (12Hr)
GISS	T. Werte/ E. Tumbleson (T)/ K. Towers		Division/Group	Baer Group	D. Havlina(12Hr)
FBAN	D.Boursier		Division/Group	Buckhorn Group	J. Washburn (12Hr)
IMET	R. Walbrun/ S. Nelaimischkies (T)		Branch		
Training Tech Spec	D. Randolph		Staging Area	Anderson	S.Bidwell (T)
Hired Equipment Tech	D. Grandbois		Staging Area	Lakehead	J. Price (T)
6. Logistics Section			Air Operations Branch		Director: T. Stepanovich
Chief	J. Morris		Air Support Grp Sup		M.Hill/ T. Smith (T)
Deputy	C. White		Helibase Manager		P. York
Supply Unit	L. Sroy/ M. Brabo (T)				
Facilities Unit	J. Guerra/ B. Little (T)				
			8. Finance/Administration Section:		
Ground Support Unit	P. Mock/ J. Wilson		Chief	J. Franklin	
Communications Unit	T. Webb		Deputy	B. Counts	
Medical Unit	J. Winnen		Time Unit	S.Thompson	
Motel Tech Spec	M. Aldrich/ S. Vaquero		Procurement Unit	C. Craig/ T. Meyers	
Ordering Manager	A. Gettman/ J. Tompkins		Comp/Claims Unit	M. Boone	
Food Unit	M. Mondragon		Cost Unit	S. Cain	
Prepared By: Name:	Chris Carrera	Position/Title:	PSC	Signature: 	
ICS 203		Date/Time:	8/15/2018 2216 hrs		



Fire Weather Forecast



FORECAST NO: 22
PREDICTION FOR: DAY/NIGHT SHIFT
SHIFT DATE: August 16, 2018
TIME/DATE ISSUED: August 15, 2018 2000 PDT

Sven Nelaimischkies
NAME OF FIRE: Carr
UNIT: CA-SHU
SIGNED: Sven Nelaimischkies
Incident Meteorologist (t)

WEATHER DISCUSSION:

Smoke will continue to be an inhibiting factor day by day as normal diurnal wind pattern remains. Through the week normal weak afternoon into evening southerly upslope winds will transition overnight into the mornings to northerly down slope/down river drainage flow. The strongest northerly overnight/morning flows will be down the Shasta river into Shasta Lake. A ridge of high pressure will build into the region into the weekend with temperatures increasing itno Saturday

WEATHER FORECAST FOR THURSDAY:

WEATHER: Smoke and Haze, becoming partly cloudy in the afternoon. Continued warm and dry. South winds increasing after 1500 hours.

MAX TEMPERATURES: 91-98°F (32-36°C). (2 degrees warmer.)

MIN HUMIDITY: 14-22%. (Neutral trend.)

20-FOOT WIND:

VALLEY - Downslope/down valley 2-5mph (3-8 km/h) early becoming upslope/upvalley 2-4 mph with gusts to 8 mph (3-6 km/h gust 13 km/h) after 1200.

MIDSLOPES/RIDGETOP- North winds 3-6 gust 8 mph (5-10 gust 13 km/h) before 1100 Becoming south to 3-7 gust 11 mph (5-19 gust 20km/h) after 1400.

HAINES INDEX: 4 **INVERSION:** Weak to moderate inversion breaking after 1300

THURSDAY NIGHT:

WEATHER: Increasing smoke otherwise clear with moderate RH recovery.

MIN TEMPERATURES: 57-67°F (14-19°C). (Neutral Trend)

MAX HUMIDITY: 40-60% (Neutral Trend)

20-FOOT WIND:

SLOPE/VALLEY - Downslope/down valley 2-5 mph (3-8 km/h) after 2200.

RIDGETOP - North 2-4 mph.

EXTENDED FORECAST:

FRIDAY: Mostly sunny. Haze and smoke. Max temps...92-99°F (31-36°C). Min RH 12-22%. Diurnal terrain driven winds for midslopes and valleys. South winds during the afternoons with night time north/northwest drainage winds remaining fairly light, and slightly stronger in the Shasta river/Lake Shasta drainage. Winds will be slightly stronger Thursday afternoon ahead of an approaching trough.

SATURDAY THROUGH MONDAY: Mostly sunny. Haze and smoke. Max temps...93-100°F (33-38°C). Min RH 10-20%. Diurnal terrain driven winds for midslopes and valleys. South winds during the afternoons with night time north/northwest drainage winds remaining fairly light, and slightly stronger in the Shasta river/Lake Shasta drainage. Haines indices will be stable as well with a more stable upper pattern over the region, becoming more unstable towards mid week.

SAFETY THOUGHT: Increased down river flow onto Shasta Lake will cause variable winds late nights into the mornings, especially on Div P by the lake. Increasing smoke in the lighter diurnal winds will decrease visibility into the week.

FIRE BEHAVIOR FORECAST

FORECAST NUMBER: 22	TYPE OF FIRE: Wildland Fire
FIRE NAME: CARR	OPERATIONAL PERIOD: 24hr 8/16 (0700-0700)
DATE ISSUED: 08/15	TIME ISSUED: 2100
UNIT: SHU	SIGNED: D. Boursier FBAN/LTAN

INPUTS

WEATHER SUMMARY

****Hot and Dry with light and variable winds****
See Weather Forecast in IAP.

OUTPUTS

GENERAL: Transition to fuels and topography driven activity.

Hazards throughout the fire area include: interior green islands and slopes, ash pits, fire weakened trees, dust devils, and roll-out.

New starts will see rapid growth and establishment. Smoke columns will contribute to long range spotting.

In the absence of weather conditions outside the forecast or extreme fire behavior conditions expect:

	Max. Flame Length	Max. Rate of Spread	Spotting	Probability of Ignition
Grass	< 5' (1.5m)	40 ch/hr (1.2 km/hr)	< ½ mile (.8 km)	89%
Grass/Shrub Mix	< 5' (1.5m)	20 ch/hr (.6 km/hr)	< ½ mile (.8 km)	89%
Timber Understory	< 8' (2.5m)	10 ch/hr (.2 km/hr)	< ¼ mile (1.2 km)	89%
Timber Litter	< 3' (1m)	5 ch/hr (.1 km/hr)	< ¼ mile (.4 km)	89%

****minimum safety zone size for brush fuels is ¼ acre (.3 Ha) for a Strike Team of Engines.**

SPECIFIC:

Branch I, II & III

Smoldering activity. Dormant heat areas may flare with air movement. Interior islands and green slopes with Southwest wind exposure alignment may see activity. Torching and short crown runs may occur with preheating or steeper terrain. Expect most activity to occur as afternoon winds increase. Roll-out and spotting potential across established lines. Keep alert to unburned islands, fire weakened trees, ash pits, and dust devils.

Branch IV and V

Predominately surface fire spread. Expect areas with understory preheating via slash piles, fuel jackpots or topography to transition into canopy. Interior Torching and short crown runs possible. Smoke shading may temper fire behavior. Look for areas of fuels treatment, timber harvest or previous fire activity for safety or control objectives. Roll-out and spotting potential across established lines. Anticipate locations above drainages to be susceptible spotting areas. Overnight inversion locations above 3,500' will see fire activity continue with lower humidity and warmer temperatures.

AIR OPERATIONS:

I-5 Corridor should remain smoked in for majority of burn period (Div. O and P).
Mixing height: 8,000 ft. AGL, Transport winds: SW 10 mph, Sunrise 0621, Sunset 2019.

SAFETY

The high operational tempo of a PL5 (planning level 5) requires heightened awareness of Fire Order #3:
Base all actions on current and expected behavior of the fire.

SAFETY MESSAGE/PLAN (ICS 208)

INCIDENT NAME:
CARR FIRE CA-SHU-007808

Operational Period: Date From: 8/16/18 Date to: 8/17/18
Time From: 0700 Time to: 0700

MAJOR HAZARDS AND RISKS

Driving

Drive defensively!!! Steep, narrow, dusty roads throughout fire area. Maintain safe following distances and appropriate speed when traversing roads. Roads are being heavily impacted by fire suppression, recovery, and the repopulation. Work with Division Supervisors to mark intersections, dead end roads, and speed limitations. Communicate on tactical channels when driving on one lane roads. HWY 299 AND LOCAL SCHOOLS OPEN

Fatigue/Complacency

Stay alert and engaged to maintain situational awareness. Focus on process instead of outcome.

Continuously learn and adapt to new challenges. Recognize your blind spots and look for vulnerabilities. Be alert for signs of fatigue and take breaks as necessary.

SNAGS

HAZARD TREE INDICATORS: Trees have been burning for an extended period of time. High risk tree species (rot and shallow root system). Numerous down trees. Dead or broken tops and limbs overhead. Accumulation of down limbs. Absence of needles, bark or limbs. Leaning or hung-up trees. Water or retardant drops in the area have broken or weakened limbs in the canopy.

Hydration/Nutrition

Drink plenty of fluids throughout the day and eat accordingly. Balance electrolyte drinks at a 3:1 water to sport drink ratio. Address dehydration concerns immediately upon symptom onset. Keep up on personal hygiene. After strenuous work, continue drinking to replace fluid losses.

Communications

Confirm all personnel have latest clone, test prior to going to line. Utilize human repeaters as necessary. Use proper terminology. Avoid using squirrel channels.

Stump Holes/Ash Pits

Ash pits are an inherent and hidden risk to firefighters that can cause serious burns and injuries. Wear all PPE. Flag hazardous areas and watch for stumps that have been smoldering for multiple days.

Accountability

Be responsible for your personal and resource accountability. Maintain proper communications with your forces, your supervisor and adjoining forces. Give clear instructions and ensure they are understood. Make sure Safety Zones are known for work areas.

Boat/Water Safety: A briefing on the watercraft shall occur prior to departure. PFD's will be worn within 10' of the water line. Watercraft transportation is available after dark for emergencies only. A weather forecast shall be obtained prior to launching. Follow manufacturer recommendations for safe operation

Powerline Safety: Treat all powerlines as energized. Follow *Power Line Safety* guidelines (IRPG pg. 24)

Prepared By: Anthony Stornetta

Position/Title: SOF1(T)

Signature:



-5-

ICS 208

IAP Page

Date/Time: 8/15/18 1820

LINE EMERGENCY REPORTING PROCEDURES

- Declare a "LINE EMERGENCY" on the COMMAND CHANNEL.

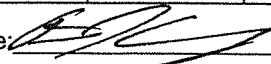
- Identify:
 - TYPE _____
 - SEVERITY _____
 - POINT OF CONTACT _____

- Identify resource needs, i.e., ambulance, hoist, REMS, Law Enforcement, etc.

- Provide COMMUNITIONS the following information:
 - CHIEF COMPLAINT: _____
 - LOCATION OF PATIENT: _____
 - TRANSPORTATION REQUEST BY: AIR ____ GROUND ____
 - DIVISION _____ CREW _____
 - POINT OF PICKUP _____
 - LAT _____ LONG _____
 - IS EMT WITH THE PATIENT: YES ____ NO ____
 - AGE _____
 - SEX: MALE ____ FEMALE ____

****ALL EMERGENCIES: Secure the area and identify witnesses for later investigation. Keep an accurate log of events****


ASSIGNMENT LIST (ICS 204)

1. Incident Name: <p style="text-align: center;">Carr</p>		2. Operational Period: Date From: 08/16/18 Date To: 08/17/18 Time From: 0700 Time To: 0700			3. Branch: II Div/Group: B/C Bravo		
4. Operations Personnel: Operations Section Chief: T. Brownell/ A. McBath (T) Day Night Ops: F. Berbena Branch Director: E. Darnall Branch Safety: J. Gillette / T. Becerra (T) Division/Group Supervisor: J. Stone (9260C)							
5. Resources Assigned:		** Resources Below in Bold are 12 Hour **			Reporting Location, Special Equipment, Remarks, Notes, and Information Time Location		
Resource Identifier	ALS	Leader	Personnel	Request #			
STC SKU 9260C		Stone, Jason	17	E-17	0700-0700	DP 55	
T/F XMN 6180		Nalder, Rich	15	E-604	0700-0700	DP 55	
W/T PVT E-136		Torres, Bill	2	E-136	0700-0700	DP 55	
W/T PVT E-353		Douglas, Jason	2	E-353	0700-0700	DP 55	
W/T PVT E-391		Hasanbasic, Dino	2	E-391	0700-0700	DP 55	
W/T PVT E-392		Funes, Anthony	2	E-392	0700-0700	DP 55	
W/T PVT E-396		Dee Holmes	2	E-396	0700-0700	DP 55	
W/T PVT E-1115		Clark, Steve	2	E-1115	0700-0700	DP 55	
W/T PVT E-1166		Dempsey, Mike	2	E-1166	0700-0700	DP 55	
W/T PVT E-1187		Kandarian, Mike	2	E-1187	0700-0700	DP 55	
EXC PVT E-1254		Williams, Brandon	1	E-1254	0700-1900	DP 55	
HEQB (T) WELCH O-660		Welch, Anthony	1	O-660	0700-0700	DP 55	
FEMP DAVIS O-1083	ALS	Davis, Joel	1		0700-1900	DP 55	
FEMT STRATTON					0700-1900	DP 55	
6. Work Assignments: Fall hazard trees that will threaten control lines. Hold fire in planned lines. Improve and hold control lines. Mop up 300 feet or 100%. Backhaul garbage, hose, and water.							
7. Special Instructions: Identify for backhaul any hose and equipment in the fire perimeter.							
8. Communications (radio and/or phone contact numbers needed for this assignment):							
Name	Ch	Function	Rx Freq	Rx Tone	Tx Freq	Tx Tone	Notes
SHA CMD	1	COMMAND	154.4300	136.5	159.0150	123.0 (T2)	(T2) BASS MTN
CDF T30	11	TACTICAL	151.3925	192.8 (T16)	151.3925	192.8 (T16)	
CALCORD	15	MEDICAL	156.0750	156.7 (T6)	156.0750	156.7 (T6)	MEDICAL
A-G CDF T17	6	A-G	159.3150	192.8	159.3150	192.8	A-G CDF TAC 17
GUARD	16	EMERGENCY	168.6250	0	168.6250	110.9	EMERGENCY USE ONLY
9. Prepared by: Name: B.J. Corey Pos/Title: RESL Signature: 							
ICS 204		Date/Time: 8/15/2018		2216 hrs			

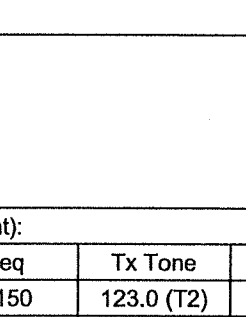
ASSIGNMENT LIST (ICS 204)

1. Incident Name: Carr		2. Operational Period: Date From: 08/16/18 Date To: 08/17/18 Time From: 0700 Time To: 0700				3. Branch: III Div/Group: H/I/M Hotel Page 1 of 2	
4. Operations Personnel: Operations Section Chief: T. Brownell/ A. McBath (T) Day Night Ops: F. Berbena Branch Director: S. Ward Branch Safety: D. Glenn / M. Weidner (T) (12HR) Division/Group Supervisor: J. Fitzgerald							
5. Resources Assigned:		** Resources Below in Bold are 12 Hour **				Reporting Location, Special Equipment, Remarks, Notes, and Information Time Location	
Resource Identifier	ALS	Leader	Personnel	Request #			
STC SHU 9244C		Gyves, Dusty	21	E-437	0700-0700	DP 32	
STC TGU 9251C		Magana, Gerry	17	E-1	0700-0700	DP 32	
CRW SHF 15B		Fields, Dwayne	20	C-200012	0700-1900	DP 32	
CRW CNA TFA		Schlickheiser, John	109	C-9027	0700-1900	DP 32	
CRW CNA TFB		Orton, Mike	118	C-9028	0700-1900	DP 32	
CRW CNA TFC		Ruiz, Jennifer	118		0700-1900	DP 32	
DOZ PVT E-52		Cattaneo, Angelo	2	E-52	0700-0700	DP 32	
DOZ PVT E-56		Caton, Jamie	2	E-56	0700-0700	DP 32	
DOZ PVT E-409		Morrison, Matthew	2	E-409	0700-0700	DP 32	
W/T PVT E-127		Mayberry, Steve	2	E-127	0700-0700	DP 32	
W/T PVT E-128		Korbly, Eric	2	E-128	0700-0700	DP 32	
W/T PVT E-129		Dunne, Nick	2	E-129	0700-0700	DP 32	
W/T PVT E-130		Scovil, Peter	2	E-130	0700-0700	DP 32	
W/T PVT E-131		Stanford, Brad	2	E-131	0700-0700	DP 32	
W/T PVT E-134		Anderson, Sandra	2	E-134	0700-0700	DP 32	
W/T PVT E-150		Pini, Tony	2	E-150	0700-0700	DP 32	
W/T PVT E-355		Shephard, Mitch	2	E-355	0700-0700	DP 32	
W/T PVT E-356		Miller, Tony	2	E-356	0700-0700	DP 32	
6. Work Assignments: Fall hazard trees. Mop up 500 feet or 100%. Backhaul garbage, hose, and water.							
7. Special Instructions: Identify for backhaul any hose and equipment in the fire perimeter.							
8. Communications (radio and/or phone contact numbers needed for this assignment):							
Name	Ch	Function	Rx Freq	Rx Tone	Tx Freq	Tx Tone	Notes
SHA CMD	1	COMMAND	154.4300	136.5	159.0150	123.0 (T2)	(T2) BASS MTN
CDF T26	7	TACTICAL	159.2925	192.8 (T16)	159.2925	192.8 (T16)	
CALCORD	15	MEDICAL	156.0750	156.7 (T6)	156.0750	156.7 (T6)	MEDICAL
A-G CDF T17	6	A-G	159.3150	192.8	159.3150	192.8	A-G CDF TAC 17
GUARD	16	EMERGENCY	168.6250	0	168.6250	110.9	EMERGENCY USE ONLY
9. Prepared by: Name: B.J. Corey		Pos/Title: RESL		Signature:			
ICS 204		Date/Time: 8/15/2018 2216 hrs					

ASSIGNMENT LIST (ICS 204)

1. Incident Name: Carr		2. Operational Period: Date From: 08/16/18 Date To: 08/17/18 Time From: 0700 Time To: 0700				3. Branch: IV Div/Group: N November **24 Hour**	
4. Operations Personnel: Operations Section Chief: T. Brownell/ A. McBath (T) Day Night Ops: F. Berbena Branch Director: J. Campbell Branch Safety: M. Urquides / A. Fast (T) Division/Group Supervisor: K. Swope							
5. Resources Assigned:		***Resources below are 24 Hour resources***				Reporting Location, Special Equipment, Remarks, Notes, and Information Time Location	
Resource Identifier	ALS	Leader	Personnel	Request #			
STC SKU 9262C		Hood, Patty	22	E-255	0700-0700	DP 33	
STG MEU 9115G					0700-0700	DP 33	
DOZ PVT E-55		Schnetzer, Donald	2	E-55	0700-0700	DP 33	
W/T PVT E-202		Gold, Rich	2	E-202	0700-0700	DP 33	
W/T PVT E-203		Kiser, Kyle	2	E-203	0700-0700	DP 33	
W/T PVT E-890		Kotterman, Dustin	2	E-890	0700-0700	DP 33	
W/T PVT E-1114		Mori, Nathan	2	E-1114	0700-0700	DP 33	
W/T PVT E-1116		Esry, Jim	2	E-1116	0700-0700	DP 33	
W/T PVT E-1119		Carr, David	2	E-1119	0700-0700	DP 33	
W/T PVT E-1157		Anderson, Michelle	2	E-1157	0700-0700	DP 33	
W/T PVT E-1161		Johnson, Matt	2	E-1161	0700-0700	DP 33	
W/T PVT E-1162		Labow, Ron	2	E-1162	0700-0700	DP 33	
W/T PVT E-1163		Rotea, Andy	2	E-1163	0700-0700	DP 33	
HEQB TRIGGS O-552		Triggs, Clayton	1	O-552	0700-0700	DP 33	
HEQB JOHNSON O-862		Johnson, Gary	1	O-862	0700-0700	DP 33	
FEMP MENDOZA O-334	ALS	Mendoza, Joshua	1	O-334	0700-0700	DP 33	
FEMP SPELLMAN O-200033	ALS	Spellman, Ron Duane	1	O-200033	0700-0700	DP 33	
REMS XSCC REMS 4		Perez, George	4	O-802	0700-0700	DP 33	
6. Work Assignments: Hold fire in planned lines. Improve and hold control lines. Mop up 300 feet or 100%. Backhaul garbage, hose, and water.							
7. Special Instructions: ***BR IV reasource will be supported out of Lakehead Camp following shift*** Identify for backhaul any hose and equipment in the fire perimeter.							
8. Communications (radio and/or phone contact numbers needed for this assignment):							
Name	Ch	Function	Rx Freq	Rx Tone	Tx Freq	Tx Tone	Notes
SHA CMD	1	COMMAND	154.4300	136.5	159.0150	123.0 (T2)	(T2) BASS MTN
VFIRE 24	8	TACTICAL	154.2725	156.7 (T6)	154.2725	156.7 (T6)	
CALCORD	15	MEDICAL	156.0750	156.7 (T6)	156.0750	156.7 (T6)	MEDICAL
A-G CDF T17	6	A-G	159.3150	192.8	159.3150	192.8	A-G CDF TAC 17
GUARD	16	EMERGENCY	168.6250	0	168.6250	110.9	EMERGENCY USE ONLY
9. Prepared by: Name: B.J. Corey Pos/Title: RESL Signature: 							
ICS 204		Date/Time: 8/15/2018		2216 hrs			

ASSIGNMENT LIST (ICS 204)

1. Incident Name: Carr		2. Operational Period: Date From: 08/16/18 Date To: 08/17/18 Time From: 0700 Time To: 0700				3. Branch: IV Div/Group: N November **Day**	
4. Operations Personnel: Operations Section Chief: T. Brownell/ A. McBath (T) Day Night Ops: F. Berbena Branch Director: J. Campbell Branch Safety: M. Urquides / A. Fast (T) Division/Group Supervisor: K. Swope							
5. Resources Assigned:		***Resources below are 12 Hour Day resources***				Reporting Location, Special Equipment, Remarks, Notes, and Information Time Location	
Resource Identifier	ALS	Leader	Personnel	Request #			
STC SHF 3676C		Zaharris, Adam	26	E-1219	0700-1900	DP 33	
ENG T6 WAX WORLAND 64		Nelson, Troy	3	E-234	0700-1900	DP 33	
ENG T6 GAR BRUSH 114		Baxley, Ashley	3	E-814	0700-1900	DP 33	
CRW CNF DESCANSO CREW 5		Healy, Patrick	21	C-200014	0700-1900	DP 33	
CRW PVT C-200000		Campbell, Brandon	20	C-200000	0700-1900	DP 33	
CRW PVT C-200001		Campbell, Jason	20	C-200001	0700-1900	DP 33	
DOZ PVT E-200006		Warner, Gary	3	E-200006	0700-1900	DP 33	
DOZ PVT E-200018		Sale, Ben	2	E-200018	0700-1900	DP 33	
W/T PVT E-1158		Hodgson, Carrie	1	E-1158	0700-1900	DP 33	
W/T PVT E-1159		Dahl, Mark	1	E-1159	0700-1900	DP 33	
W/T PVT E-1183		Virag, Wayne	1	E-1183	0700-1900	DP 33	
W/T PVT E-1184		Darger, Steve	1	E-1184	0700-1900	DP 33	
W/T PVT E-1185		Williams, Wayne	1	E-1185	0700-1900	DP 33	
W/T PVT E-200013		Jungwirth, Jerry	1	E-200013	0700-1900	DP 33	
FALM O-96		Derek, Jacob	2	O-96	0700-1900	DP 33	
FALM O-667		McDaniel	2	O-667	0700-1900	DP 33	
FALM O-669		Garwood, Lance	2	O-669	0700-1900	DP 33	
FALB WACHHOLZ O-200175		Wachholz, Michael	1	O-200175	0700-1900	DP 33	
TFLD MEYER O-580		Meyer, Paul	1	O-580	0700-1900	DP 33	
ATVO RUNDQUIST O-910		Rundquist, Rachel	1	O-910	0700-1900	DP 33	
6. Work Assignments: Hold fire in planned lines. Improve and hold control lines. Mop up 300 feet or 100%. Backhaul garbage, hose, and water.							
7. Special Instructions: ***BR IV resource will be supported out of Lakehead Camp following shift*** Identify for backhaul any hose and equipment in the fire perimeter.							
8. Communications (radio and/or phone contact numbers needed for this assignment):							
Name	Ch	Function	Rx Freq	Rx Tone	Tx Freq	Tx Tone	Notes
SHA CMD	1	COMMAND	154.4300	136.5	159.0150	123.0 (T2)	(T2) BASS MTN
VFIRE 24	8	TACTICAL	154.2725	156.7 (T6)	154.2725	156.7 (T6)	
CALCORD	15	MEDICAL	156.0750	156.7 (T6)	156.0750	156.7 (T6)	MEDICAL
A-G CDF T17	6	A-G	159.3150	192.8	159.3150	192.8	A-G CDF TAC 17
GUARD	16	EMERGENCY	168.6250	0	168.6250	110.9	EMERGENCY USE ONLY
9. Prepared by: Name: B.J. Corey		Pos/Title: RESL		Signature: 			
ICS 204		Date/Time: 8/15/2018 2216 hrs					

ASSIGNMENT LIST (ICS 204)

1. Incident Name: Carr		2. Operational Period: Date From: 08/16/18 Date To: 08/17/18 Time From: 0700 Time To: 0700				3. Branch: IV Div/Group: O Oscar **Day**	
4. Operations Personnel: Operations Section Chief: T. Brownell/ A. McBath (T) Day Night Ops: F. Berbena Branch Director: J. Campbell Branch Safety: M. Urquides / A. Fast (T) Division/Group Supervisor: J. Hannan							
5. Resources Assigned:		***Resources below are 12 Hour Day resources***				Reporting Location, Special Equipment, Remarks, Notes, and Information Time Location	
Resource Identifier	ALS	Leader	Personnel	Request #			
CRW ENF IRON MOUNTAIN		Potter, Eric	22	C-200011	0700-1900	DP 33	
CRW BDF 2		Gillespie, Robert	20	C-122	0700-1900	DP 33	
CRW CNF TRABUCO		Reyes, Steve	21	C-200013	0700-1900	DP 33	
CRW SQF 5		Sartin, jason	21	C-120	0700-1900	DP 33	
W/T PVT E-1173		Becker, Clark	1	E-1173	0700-1900	DP 33	
W/T PVT E-1176		Sperberck, Bill	1	E-1176	0700-1900	DP 33	
GRD PVT E-200012		Janc, Richard	1	E-200012	0700-1900	DP 33	
FALM O-94		Hodgecon, Russell	2	O-94	0700-1900	DP 33	
TFLD GUTIERREZ O-200181		Gutierrez, Luis Allen	1	O-200181	0700-1900	DP 33	
TFLD HAMPTON O-200161		Hampton, Bruce	1	O-200161	0700-1900	DP 33	
HEQB TAVERNER O-200165		Taverner, Dyson Matthew	1	O-200165	0700-1900	DP 33	
SHASTA BOAT T/F		Sgt. Gee			0700-1900	DP 33	
FEMP LAROWE O-1071	ALS	Larowe, Ryan	1	O-1071	0700-1900	DP 33	
SOFR BOOKER JR O-896		Booker Jr, Ronald Mark	1	O-896	0700-1900	DP 33	
6. Work Assignments: Hold fire in planned lines. Improve and hold control lines. Mop up 300 feet or 100%. Backhaul garbage, hose, and water.							
7. Special Instructions: ***BR IV resource will be supported out of Lakehead Camp following shift*** Identify for backhaul any hose and equipment in the fire perimeter.							
8. Communications (radio and/or phone contact numbers needed for this assignment):							
Name	Ch	Function	Rx Freq	Rx Tone	Tx Freq	Tx Tone	Notes
SHA CMD	1	COMMAND	154.4300	136.5	159.0150	123.0 (T2)	(T2) BASS MTN
VFIRE 25	9	TACTICAL	154.2875	156.7 (T6)	154.2875	156.7 (T6)	
CALCORD	15	MEDICAL	156.0750	156.7 (T6)	156.0750	156.7 (T6)	MEDICAL
A-G CDF T17	6	A-G	159.3150	192.8	159.3150	192.8	A-G CDF TAC 17
GUARD	16	EMERGENCY	168.6250	0	168.6250	110.9	EMERGENCY USE ONLY
9. Prepared by: Name: B.J. Corey		Pos/Title: RESL		Signature:			
ICS 204		Date/Time: 8/15/2018 2216 hrs					

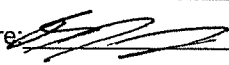
ASSIGNMENT LIST (ICS 204)

1. Incident Name: Carr		2. Operational Period: Date From: 08/16/18 Date To: 08/17/18 Time From: 0700 Time To: 0700				3. Branch: V Div/Group: P/S Papa Page 1 of 2	
4. Operations Personnel: Operations Section Chief: T. Brownell/ A. McBath (T) Day Night Ops: F. Berbena Branch Director: S. Lauderdale Branch Safety: G. Powell / C. Gerking (T) Division/Group Supervisor: L. Turman							
5. Resources Assigned:		** Resources Below in Bold are 12 Hour **					
Resource Identifier	ALS	Leader	Personnel	Request #			
STC AEU 9270C		Brunton, Mark	17	E-256	0700-0700	DP 47	
T/F CARR #20		Brady/M.Lilienthal/C.Egge	20		0700-1900	DP 47	
T/F CARR #25		M. Bertrand/J. Rhodes	23		0700-1900	DP 47	
STG LMU 9224G		Steele, Mark	33	C-46	0700-0700	DP 47	
STG NEU 9234G		Nelson, Todd	33	C-21	0700-0700	DP 47	
STG TGU 9255G		Smith, Phillip	33	C-45	0700-0700	DP 47	
STG TGU 9258G		Pederson, Travis	35	C-19	0700-0700	DP 47	
DOZ PVT E-92		Rhoades, Steven	2	E-92	0700-0700	DP 47	
DOZ PVT E-94		Bruce Miller	2	E-94	0700-0700	DP 47	
DOZ PVT E-242		Drue, Gangbin	2	E-242	0700-0700	DP 47	
W/T PVT E-352		Andrews, Tammy	2	E-352	0700-0700	DP 47	
W/T PVT E-354		Matteroli, Clay	2	E-354	0700-0700	DP 47	
W/T PVT E-397		Lopez, Frankie	2	E-397	0700-0700	DP 47	
W/T PVT E-398		Craig, Davis	2	E-398	0700-0700	DP 47	
W/T PVT E-758		Jones, Ernest	2	E-758	0700-0700	DP 47	
W/T PVT E-887		Tallon, Lowell	2	E-887	0700-0700	DP 47	
EXC PVT E-1189		Smith, Kenny	1	E-1189	0700-1900	DP 47	
HEQB ROBISON O-200176		Robison, Bruce	1	O-200176	0700-1900	DP 47	
6. Work Assignments: Construct control lines as direct as possible. Fall hazard trees, and trees that will threaten control lines. Hold fire in planned lines. Improve and hold control lines. Mop up 300 feet or 100%. Backhaul garbage, hose, and water.							
7. Special Instructions: Identify for backhaul any hose and equipment in the fire perimeter.							
8. Communications (radio and/or phone contact numbers needed for this assignment):							
Name	Ch	Function	Rx Freq	Rx Tone	Tx Freq	Tx Tone	Notes
SHA CMD	1	COMMAND	154.4300	136.5	159.0150	123.0 (T2)	(T2) BASS MTN
VFIRE 26	10	TACTICAL	154.3025	156.7 (T6)	154.3025	156.7 (T6)	
CALCORD	15	MEDICAL	156.0750	156.7 (T6)	156.0750	156.7 (T6)	MEDICAL
A-G CDF T17	6	A-G	159.3150	192.8	159.3150	192.8	A-G CDF TAC 17
GUARD	16	EMERGENCY	168.6250	0	168.6250	110.9	EMERGENCY USE ONLY
9. Prepared by: Name: B.J. Corey		Pos/Title: RESL		Signature:			
ICS 204		Date/Time: 8/15/2018 2216 hrs					

ASSIGNMENT LIST (ICS 204)

1. Incident Name: Carr		2. Operational Period: Date From: 08/16/18 Date To: 08/17/18 Time From: 0700 Time To: 0700			3. Branch: Supp Repair Div/Group: Trinity Group		
4. Operations Personnel: Operations Section Chief: T. Brownell/ A. McBath (T) Day Night Ops: F. Berbena Branch Director: B. Rowe (12Hr) Division/Group Supervisor: B. Rodgers (12Hr)					Page 1 of 3		
5. Resources Assigned:		** Resources Below in Bold are 12 Hour **			Reporting Location, Special Equipment, Remarks, Notes, and Information		
Resource Identifier	ALS	Leader	Personnel	Request #	Time	Location	
DOZ PVT E-51		Cattaneo, Angelo	1	E-51	0700-1900	DP 37	
DOZ PVT E-88		Obrien, Mike	1	E-88	0700-1900	DP 37	
DOZ PVT E-341		Carter, Kevin	1	E-341	0700-1900	DP 37	
DOZ PVT E-343		Wolfe, Larry	1	E-343	0700-1900	DP 37	
DOZ PVT E-407		Ingram, Brad	1	E-407	0700-1900	DP 37	
DOZ PVT E-419		Waterman, Tim	1	E-419	0700-1900	DP 37	
DOZ PVT E-755		Ray, Clant	1	E-755	0700-1900	DP 37	
W/T PVT E-394		Troedel, Bryan	1	E-394	0700-1900	DP 37	
W/T PVT E-886		Newberry, Scott	1	E-886	0700-1900	DP 37	
W/T PVT E-892		Bales, Cody	1	E-892	0700-1900	DP 37	
W/T PVT E-1107		Hizey, Blake	1	E-1107	0700-1900	DP 37	
W/T PVT E-1110		Crownover, Wes	1	E-1110	0700-1900	DP 37	
W/T PVT E-1117		Vieirs, Brandon	1	E-1117	0700-1900	DP 37	
W/T PVT E-1156		Wooten, William	1	E-1156	0700-1900	DP 37	
W/T PVT E-1169		Leaverton, Ryan	1	E-1169	0700-1900	DP 37	
W/T PVT E-1174		Johnson, Dave	1	E-1174	0700-1900	DP 37	
W/T PVT E-1178		Olson, Ryan	1	E-1178	0700-1900	DP 37	
MAS PVT E-764		Grass, Kelvin	1	E-764	0700-1900	DP 37	
6. Work Assignments: Grade roads. Repair fire lines, spread berms and slash piles.							
7. Special Instructions: Identify for backhaul any hose and equipment in the fire perimeter.							
8. Communications (radio and/or phone contact numbers needed for this assignment):							
Name	Ch	Function	Rx Freq	Rx Tone	Tx Freq	Tx Tone	Notes
SHA CMD	1	COMMAND	154.4300	136.5	159.0150	123.0 (T2)	(T2) BASS MTN
VTAC13	14	TACTICAL	158.7375	156.7 (T6)	158.7375	156.7 (T6)	
CALCORD	15	MEDICAL	156.0750	156.7 (T6)	156.0750	156.7 (T6)	MEDICAL
A-G CDF T17	6	A-G	159.3150	192.8	159.3150	192.8	A-G CDF TAC 17
GUARD	16	EMERGENCY	168.6250	0	168.6250	110.9	EMERGENCY USE ONLY
9. Prepared by: Name: B.J. Corey		Pos/Title: RESL		Signature:			
ICS 204		Date/Time: 8/15/2018 2216 hrs					


ASSIGNMENT LIST (ICS 204)

1. Incident Name: Carr		2. Operational Period: Date From: 08/16/18 Date To: 08/17/18 Time From: 0700 Time To: 0700				3. Branch: Supp Repair Div/Group: Buckhorn Group	
4. Operations Personnel: Operations Section Chief: T. Brownell/ A. McBath (T) Day Night Ops: F. Berbena Branch Director: B. Rowe (12Hr) Division/Group Supervisor: J. Washburn (12Hr)							
5. Resources Assigned:		** Resources Below in Bold are 12 Hour **				Page 1 of 2	
Resource Identifier	ALS	Leader	Personnel	Request #	Reporting Location, Special Equipment, Remarks, Notes, and Information Time Location		
CRW NPX SAMOA 61		Lee, Andrew	21	C-123	0700-1900	DP 37	
DOZ PVT E-243		Darr, Chris	1	E-243	0700-1900	DP 37	
DOZ PVT E-403		Smith, Dade	1	E-403	0700-1900	DP 37	
DOZ PVT E-406		Shankles, Daryl	1	E-406	0700-1900	DP 37	
DOZ PVT E-855		Parlet, Frank	1	E-855	0700-1900	DP 37	
W/T PVT E-142		Jones, Randy	1	E-142	0700-1900	DP 37	
W/T PVT E-308		Wharff, Steve	1	E-308	0700-1900	DP 37	
W/T PVT E-359		Hinkle, John	1	E-359	0700-1900	DP 37	
W/T PVT E-799		Prince, John	1	E-799	0700-1900	DP 37	
W/T PVT E-1112		Lemos, Darrel	1	E-1112	0700-1900	DP 37	
W/T PVT E-1113		Braziel, Mel	1	E-1113	0700-1900	DP 37	
W/T PVT E-1168		Foster, Justin	1	E-1168	0700-1900	DP 37	
W/T PVT E-1170		Roth, Bryan	1	E-1170	0700-1900	DP 37	
W/T PVT E-1171		Mcgarr, Dennis	1	E-1171	0700-1900	DP 37	
W/T PVT E-1175		Zabel, Frank	1	E-1175	0700-1900	DP 37	
W/T PVT E-1179		Negranti, James	1	E-1179	0700-1900	DP 37	
W/T PVT E-1180		Hove, Ken	1	E-1180	0700-1900	DP 37	
W/T PVT E-1182		Leguellec, Michael	1	E-1182	0700-1900	DP 37	
6. Work Assignments: Grade roads. Repair fire lines, spread berms and slash piles.							
7. Special Instructions: Identify for backhaul any hose and equipment in the fire perimeter.							
8. Communications (radio and/or phone contact numbers needed for this assignment):							
Name	Ch	Function	Rx Freq	Rx Tone	Tx Freq	Tx Tone	Notes
SHA CMD	1	COMMAND	154.4300	136.5	159.0150	123.0 (T2)	(T2) BASS MTN
VTAC13	14	TACTICAL	158.7375	156.7 (T6)	158.7375	156.7 (T6)	
CALCORD	15	MEDICAL	156.0750	156.7 (T6)	156.0750	156.7 (T6)	MEDICAL
A-G CDF T17	6	A-G	159.3150	192.8	159.3150	192.8	A-G CDF TAC 17
GUARD	16	EMERGENCY	168.6250	0	168.6250	110.9	EMERGENCY USE ONLY
9. Prepared by: Name:		B.J. Corey		Pos/Title: RESL		Signature: 	
ICS 204		Date/Time: 8/15/2018		2216 hrs			

ASSIGNMENT LIST (ICS 204)

1. Incident Name: Carr		2. Operational Period: Date From: 08/16/18 Date To: 08/17/18 Time From: 0700 Time To: 0700				3. Branch: Supp Repair Div/Group: Ono Group	
4. Operations Personnel: Operations Section Chief: T. Brownell/ A. McBath (T) Day Night Ops: F. Berbena Branch Director: B. Rowe (12Hr) Division/Group Supervisor: D. Dresselhaus (12Hr)						Page 1 of 2	
5. Resources Assigned:		** Resources Below in Bold are 12 Hour **				Reporting Location, Special Equipment, Remarks, Notes, and Information Time Location	
Resource Identifier	ALS	Leader	Personnel	Request #			
DOZ PVT E-340		Oilar, Pat	1	E-340	0700-1900	South Fork Rd.	
DOZ PVT E-346		Looper, John	1	E-346	0700-1900	South Fork Rd.	
DOZ PVT E-405		Gill, Levi	1	E-405	0700-1900	South Fork Rd.	
DOZ PVT E-843		Olivolo, Chris	1	E-843	0700-1900	South Fork Rd.	
DOZ PVT E-881		Miles, Daniel	1	E-881	0700-1900	South Fork Rd.	
DOZ PVT E-882		Keyes, Josh	1	E-882	0700-1900	South Fork Rd.	
DOZ PVT E-200002		Cross, Chris	1	E-200002	0700-1900	South Fork Rd.	
DOZ PVT E-200003		Lindauer, Howie	1	E-200003	0700-1900	South Fork Rd.	
W/T PVT E-133		Trumbly, Wayne	1	E-133	0700-1900	South Fork Rd.	
W/T PVT E-393		Troedel, Bryan	1	E-393	0700-1900	South Fork Rd.	
W/T PVT E-759		Cleer, Dana	1	E-759	0700-1900	South Fork Rd.	
W/T PVT E-798		Horn, Kevin	1	E-798	0700-1900	South Fork Rd.	
W/T PVT E-800		Vest, Scott	1	E-800	0700-1900	South Fork Rd.	
W/T PVT E-885		Gassaway, Norm	1	E-885	0700-1900	South Fork Rd.	
W/T PVT E-1102		Baron, Frank	1	E-1102	0700-1900	South Fork Rd.	
W/T PVT E-1103		Harp, Gloria	1	E-1103	0700-1900	South Fork Rd.	
W/T PVT E-1111		Franklin, Clyde	1	E-1111	0700-1900	South Fork Rd.	
W/T PVT E-1164		Adair, Ernie	1	E-1164	0700-1900	South Fork Rd.	
6. Work Assignments: Grade roads. Repair fire lines, spread berms and slash piles.							
7. Special Instructions: Identify for backhaul any hose and equipment in the fire perimeter.							
8. Communications (radio and/or phone contact numbers needed for this assignment):							
Name	Ch	Function	Rx Freq	Rx Tone	Tx Freq	Tx Tone	Notes
SHA CMD	1	COMMAND	154.4300	136.5	159.0150	123.0 (T2)	(T2) BASS MTN
VTAC13	14	TACTICAL	158.7375	156.7 (T6)	158.7375	156.7 (T6)	
CALCORD	15	MEDICAL	156.0750	156.7 (T6)	156.0750	156.7 (T6)	MEDICAL
A-G CDF T17	6	A-G	159.3150	192.8	159.3150	192.8	A-G CDF TAC 17
GUARD	16	EMERGENCY	168.6250	0	168.6250	110.9	EMERGENCY USE ONLY
9. Prepared by: Name:		B.J. Corey		Pos/Title: RESL		Signature:	
ICS 204		Date/Time: 8/15/2018		2216 hrs			

ICS 205 - INCIDENT RADIO COMMUNICATIONS PLAN

1. Incident Name: Carr Branches I, IV, AND IV		2. Date/Time Prepared Date: 08/15/2018 Time: 1830		3. Operational Period: Date From: 08/16/18 Time From: 0700		Date To: 08/17/18 Time To: 0700		
4. Communications								
Ch#	Function	Name	Assigned To	Rx Freq	Rx Tone	Tx Freq	Tx Tone	Notes
1	COMMAND	SHA CMD	ALL DIVISIONS	154.4300	136.5	159.0150	123.0 (T2)	(T2) BASS MTN
2	COMMAND	SHA CMD T4	ALL DIVISIONS	154.4300	136.5	159.0150	136.5 (T4)	(T4) INSKIP MTN
3	COMMAND	SHA CMD T14	ALL DIVISIONS	154.4300	136.5	159.0150	151.4 (T14)	(T14) HOADLEY MTN
4	COMMAND	SHA CMD T15	ALL DIVISIONS	154.4300	136.5	159.0150	162.2 (T15)	(T15) SUGARLOAF MTN
5	COMMAND	SHA CMD T9	ALL DIVISIONS	154.4300	136.5	159.0150	100.0 (T9)	(T9) BULLY CHOOP MTN
6	A-G	A-G CDF T17	ALL DIVISIONS	159.3150	192.8	159.3150	192.8	A-G CDF TAC 17
7	TACTICAL	VFIRE 23	DIV T/U/V/XY	154.2950	156.7 (T6)	154.2950	156.7 (T6)	
8	TACTICAL	VFIRE 24	DIV N	154.2725	156.7 (T6)	154.2725	156.7 (T6)	
9	TACTICAL	VFIRE 25	DIV O	154.2875	156.7 (T6)	154.2875	156.7 (T6)	
10	TACTICAL	VFIRE 26	DIV P/S	154.3025	156.7 (T6)	154.3025	156.7 (T6)	
11	TACTICAL	NIFC T5	UNASSIGNED	166.7250	131.8 (T3)	166.7250	131.8 (T3)	NOT ASSIGNEED
12	TACTICAL	NIFC T6	UNASSIGNED	166.7750	131.8 (T3)	166.7750	131.8 (T3)	NOT ASSIGNEED
13	TACTICAL	NIFC T7	UNASSIGNED	168.2500	131.8 (T3)	168.2500	131.8 (T3)	NOT ASSIGNEED
14	TACTICAL	CDF T32	HERO GRP	151.2425	192.8 (T16)	151.2425	192.8 (T16)	
15	MEDICAL	CALCORD	ALL DIVISIONS	156.0750	156.7 (T6)	156.0750	156.7 (T6)	MEDICAL
16	EMERGENCY	GUARD	ALL DIVISIONS	168.6250	0	168.6250	110.9	EMERGENCY USE ONLY
17								
18								
19								
20	EMERGENCY	GUARD	ALL DIVISIONS	168.6250	0	168.6250	110.9	EMERGENCY USE ONLY
5. Special Instructions								
6. Prepared by (Communications Unit Leader): Name: Tom Webb			Signature: 		Date/Time: 08/15/18 1830			
ICS 205 - CONTROLLED UNCLASSIFIED INFORMATION//BASIC								

ICS 205 - INCIDENT RADIO COMMUNICATIONS PLAN

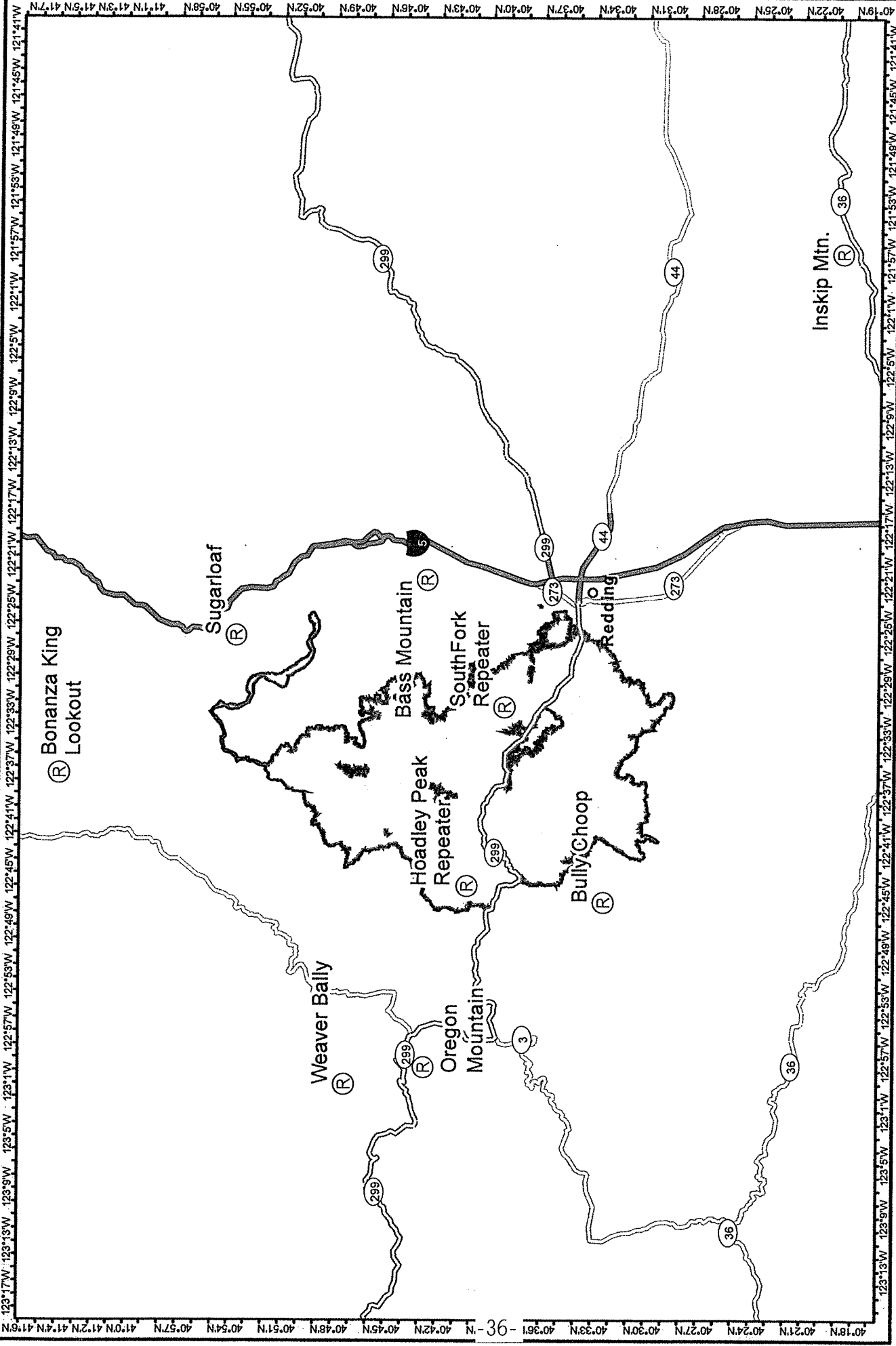
CONTROLLED UNCLASSIFIED
INFORMATION/BASIC

1. Incident Name: Carr Branches II, III, and Supp Repair	2. Date/Time Prepared Date: 08/15/2018 Time: 1830	3. Operational Period: Date From: 08/16/18 Date To: 08/17/18 Time From: 0700 Time To: 0700
---	--	---

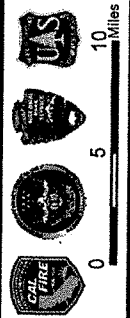
4. Communications									
Ch#	Function	Name	Assigned To	Rx Freq	Rx Tone	Tx Freq	Tx Tone	Notes	
1	COMMAND	SHA CMD	ALL DIVISIONS	154.4300	136.5	159.0150	123.0 (T2)	(T2) BASS MTN	
2	COMMAND	SHA CMD T4	ALL DIVISIONS	154.4300	136.5	159.0150	136.5 (T4)	(T4) INSKIP MTN	
3	COMMAND	SHA CMD T14	ALL DIVISIONS	154.4300	136.5	159.0150	151.4 (T14)	(T14) HOADLEY MTN	
4	COMMAND	SHA CMD T15	ALL DIVISIONS	154.4300	136.5	159.0150	162.2 (T15)	(T15) SUGARLOAF MTN	
5	COMMAND	SHA CMD T9	ALL DIVISIONS	154.4300	136.5	159.0150	100.0 (T9)	(T9) BULLY CHOOP MTN	
6	A-G	A/G CDF T17	ALL DIVISIONS	159.3150	192.8	159.3150	192.8	A-G CDF TAC 17	
7	TACTICAL	CDF T26	DIV H / I / M	159.2925	192.8 (T16)	159.2925	192.8 (T16)		
8	TACTICAL	CDF T27	DIV D / F	159.3075	192.8 (T16)	159.3075	192.8 (T16)		
9	TACTICAL	CDF T28	FIRING GRP	151.1825	192.8 (T16)	151.1825	192.8 (T16)		
10	TACTICAL	CDF T29	UNASSIGNED	151.3475	192.8 (T16)	151.3475	192.8 (T16)		
11	TACTICAL	CDF T30	DIV B / C	151.3925	192.8 (T16)	151.3925	192.8 (T16)		
12	TACTICAL	VTAC11	UNASSIGNED	151.1375	156.7 (T6)	151.1375	156.7 (T6)		
13	TACTICAL	VTAC12	DIV A	154.4525	156.7 (T6)	154.4525	156.7 (T6)		
14	TACTICAL	VTAC13	SUP. REPAIR	158.7375	156.7 (T6)	158.7375	156.7 (T6)		
15	MEDICAL	CALCORD	ALL DIVISIONS	156.0750	156.7 (T6)	156.0750	156.7 (T6)	MEDICAL	
16	EMERGENCY	GUARD	ALL DIVISIONS	168.6250		168.6250	110.9	EMERGENCY USE ONLY	
17									
18									
19									
20	EMERGENCY	GUARD	ALL DIVISIONS	168.6250		168.6250	110.9	EMERGENCY USE ONLY	

5. Special Instructions


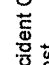
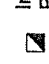
6. Prepared by (Communications Unit Leader): Name: Tom Webb	Signature:
ICS 205 - CONTROLLED UNCLASSIFIED INFORMATION/BASIC	
Date/Time: 08/15/18 1830	Date/Time: 08/15/18 1830



 Carr Fire
 CA-SHU-007808
 COMMS



Communication Map
Carr Fire
 CA-SHU-007808

 Camp
 Incident Command Post
 Drop Point
 NAD83 1:525,000



MEDICAL PLAN (ICS 206)

1. Incident Name: CARR INCIDENT	2. Operational Period: Date From: 08/16/2018 Time From: 07:00	Date To: 08/17/2018 Time To: 07:00
---	--	---

3. Medical Aid Stations: MEDICAL UNIT LEADER: (408) 710-7196 COMMUNICATIONS UNIT: (530) 949-6816			
Name	Location	Contact Number(s)/Frequency	Paramedics on Site?
MERT	BASE CAMP (BY CDC SLEEPING AREA)	(530) 310-0716	RN & PA
EXPEDITORS	ANDERSON FAIRGROUNDS (NEAR BRIEFING)	---	NONE
FRONTLINE MEDICAL	RED BLUFF FAIRGROUNDS	(530) 604-8380	PARAMEDICS

4. Transportation (indicate air or ground):			
Ambulance Service	Location	Contact Number(s)/Frequency	Level of Service
AMR MEDIC 145 (GROUND)	DP 55	SHASTA COMMAND	ALS
MERCY MEDIC 115 (GROUND)	LAKEHEAD	SHASTA COMMAND	ALS
TRINITY MEDIC 8	FAIRVIEW MARINA, TRINITY COUNTY	SHASTA COMMAND	ALS
REACH AIRSHIP 5	1524 East St. Redding	(877) 939-6300	RN
PHI AIR MED	5900 Old Oregon Trail Redding	(800) 597-9571	RN
CHP 14 & 16 (HOIST)	2651 Gold Street (Benton Airpark), Redding	(530) 225-2040	ALS / HOIST
CALFIRE COPTER 101 (HOIST)	MOUNTAIN GATE HELIBASE	(530)680-4631	BLS DAY HOIST
NATIONAL GUARD 841	REDDING MUNI HELIBASE	(805)540-0334	24 HOUR ALS HOIST

5. Hospitals:							
Hospital Name	Address, Latitude & Longitude if Helipad	Contact Number(s)/ Frequency	Travel Time		Trauma Center	Burn Center	Helipad
			Air	Ground			
SHASTA REG MED CTR MED 2	1100 BUTTE ST, REDDING 40° 35.106'N, 122° 23.268'W	(530) 244-5400 468.025 Tx, 468.025 Rx PL 5	10 MIN	29 MIN	YES LEVEL: 3	NO	YES
MERCY MED CTR MED 4	2175 ROSALINE AVE, REDDING 40° 34.332'N, 122° 23.796'W	(530) 225-7201 468.075 Tx, 463.000 Rx PL 5	10 MIN	29 MIN	YES LEVEL: 2	NO	YES
UC DAVIS MED 8	2315 STOCKTON BLVD SACRAMENTO 38° 33.360'N, 121° 27.330'W	(916) 734-2011 446.525 Tx, 203.5 Rx	1.25 HOUR	3.5 HOUR	YES Level: 1	YES	YES
TRINITY HOSPITAL WEAVERVILLE	60 EASTER AVENUE WEAVERVILLE N40° 44.275' W122°56.359'	(530)623-5541 x1	20 MIN	45 MIN	NO	NO	YES

6. Special Medical Emergency Procedures:
LINE EMERGENCY:
Crew Supervisor to contact Division Supervisor with patient complaint/condition, location, and resource needs.

- Division Supervisor contacts and gives report on conditions, complaint/condition, and resource needs to:
 1. Nearest Line FEMT/FEMP
 2. Communications Unit
- Emergency or Priority traffic received: Communication Unit will clear the command channel for emergency traffic only, for the duration of the MAJOR IWI
- Communications Unit will make proper notifications
- OPERATIONS can declare a MAJOR IWI based on the report on conditions from the division supervisor
- Division Supervisor or designee will serve as point of contact (IWI SUPERVISOR) and run the emergency utilizing the COMMAND CHANNEL and CALCORD for the tac net during the IWI

****ALL EMERGENCIES: Secure the area and identify witnesses for later investigation. Keep an accurate log of events****

*****START 20 MINUTE TIMER IF IWI*****

BASE CAMP EMERGENCY:
CONTACT COMMUNICATIONS UNIT AT: (530) 949-6816 report patient complaint/condition and location. Medical Staff will respond to stabilize incident

- COMMUNICATIONS Unit contacts:
 1. Operations
 2. Medical
 3. Safety
 4. Logistics

INJURY REPORTING PROCEDURES
 CHIEF COMPLAINT _____
 LOCATION OF PATIENT _____
 TRANSPORT REQUEST BY: AIR _____ GROUND _____
 DIVISION _____ CREW _____
 POINT OF PICKUP _____
 LAT _____ LONG _____
 IS EMT WITH THE PATIENT: YES _____ NO _____
 AGE _____
 SEX: MALE _____ FEMALE _____
****Pre-determined rendezvous location for transfer from rescue helicopter to ground ambulance or air ambulance: Mountain Gate HELIBASE****

N 40°42.30 W 122°20.46
 14324 Wonderland BLVD.
 REDDING, 96003

7. Prepared by (Medical Unit Leader): Name: JESSE WINNEN	Signature:
8. Approved by (Safety Officer): ANTHONY STORNETTA	Signature:
ICS 206	IAP Page _____ Date/Time: 08/15/2018 1710



STRUCTURE DEFENSE GUIDE

STRUCTURE TRIAGE DECISION PROCESS (S-FACTS)

SURVIVAL

- Initial Assessment: can you survive here? **If not, LEAVE NOW!**
- Is there a Safety Zone nearby? **If not, LEAVE NOW! (IRPG)**
- Do you have a viable Escape Route?
- What is the decision point at which you will leave based on fire behavior and rate of spread?
- Is there a Temporary Refuge Area (TRA) on site? **If not, LEAVE NOW!**
 - Preplanned area for immediate, temporary refuge
 - Use of fire shelter should not be necessary
 - Is there a viable Escape Route to the TRA or Safety Zone?
- Is "Prep and Go" tactic an option?
- Do you have communications with your supervisor and adjoining forces?
- If safety issues cannot be mitigated, **LEAVE NOW!**

FIRE ENVIRONMENT

- Can you survive based on current and expected fire behavior? **If not, LEAVE NOW!**
- Look up, Look Down, Look Around Indicators:
 - Fuels (characteristics, moisture, temperature)
 - What will the intensity of the fire be when it arrives?
 - How long will it take to consume the fuels?
 - Wind
 - Current speed/direction
 - Expect changing winds
 - Terrain
 - Are you in a chute, chimney, or saddle? **If yes, LEAVE NOW!**
 - Is wind in alignment with topography?
 - What is your position relative to topography?
 - Are you mid slope or on top of a ridge?
 - Atmospheric Stability
 - Fire Behavior (requires constant monitoring)
 - Spotting, crowning, sheeting, rate of spread?
 - Flame length and height?
- Other weather considerations:
 - What is the current relative humidity?
 - Is there an expected change?
 - Are thunderstorms forecasted?

ACCESS

- Is access compatible with time and distance factors necessary to utilize as an Escape Route to a Safety Zone?
 - Road surface adequate for speed necessary?
 - Adequate width?
 - Turnaround/turnouts?
 - Bridges within limits for fire apparatus?
 - Drainage ditches/culverts?
 - Steep grades?
 - Is there a safe place to spot appar. **39**

CONSTRUCTION/CLEARANCE

- Does the structure have adequate defensible space, based on topography, fuels, and current and expected fire behavior?
- Can defensible space problems be mitigated quickly?
- Will building materials and yard clutter compromise safety?
- Is the construction wood siding or shake shingle roof?
- Are there vent openings, open eaves, large glass windows facing fire front, decks with vegetation below?
 - Will ember intrusion through attic or foundation vents be a problem?
- What are the contents in the garage and outbuildings?
- Are there hazardous materials present?
- Are there propane tanks, fuel tanks, or power lines?
- Is there an adequate water supply nearby?
- Are additional resources needed to mitigate issues?
- Consider "Prep and Go" or "Prep and Defend" tactics

TIME CONSTRAINTS

- Is there time for an adequate size up of the structure defense problem?
- Is there time to mitigate safety concerns?
- Is there time and adequate resources to properly prepare and defend the structure?
- Is there time to escape, utilizing Escape Routes, to a Safety Zone? **If not, LEAVE NOW!**

STAY OR GO

- Tactical decision based on the S-FACTS
- Is it safe to stay? If no, utilize "Check and Go" tactic
- Is there time to prepare the structure for defense and what will the fire behavior be when the fire gets here?
- "Prep and Go" or "Fire Front Following" tactics should be used when it is not safe to "Prep and Defend"

STRUCTURE TRIAGE CATEGORIES

Not-Threatened

- Safety Zone nearby and TRA present at structure
- Construction features/defensible space make the structure unlikely to ignite
- Residents may/may not have evacuated

Threatened Defensible

- Safety Zone nearby and TRA present at structure
- Construction features/defensible space require structure defense tactics during fire front impact
- Residents may/may not have evacuated

Threatened non-Defensible

- Lack of adequate Safety Zone nearby
- Structure cannot be safely defended
- Residents must be evacuated

ENTRAPMENT AVOIDANCE

- Are you adhering to the **10 Standard Firefighting Orders?** (IRPG)
- Have you considered the **18 Situations that Shout Watch Out?**
- Have you considered the **Common Denominators of Fire Behavior on Tragedy Fires?** (IRPG)
- Are you maintaining **LCES?** (IRPG)
- Look Up, Look Down, Look Around (IRPG)
- Have Decision Points ("Trigger Points") been established?
- Conduct Risk Management (IRPG)
 - Situational Awareness – Hazard Assessment – Hazard Control – Decision Point – Evaluate

FIRING OPERATION CHECKLIST

Location: _____

Date: _____ Time: _____

Firing Supervisor _____

1. Personnel Briefing

- Objectives
- Conditions (fire environment)
- Resource assignments identified
 - Firing personnel
 - Holding forces
 - Lookouts
- Ignition plan/sequence
- Communication Plan
- Contingency Plan
- Safety issues

2. Go / No-Go

- All personnel briefed
- Weather forecast reviewed
- Resources in place
- Lookouts posted as needed
- Anchor and termination firing points identified
- Communications systems in place
- Fire behavior forecast reviewed
- Escape routes and safety zones established and made known
- Adjoining forces/Air Attack notified

3. Approval Prior To Firing

- Division Supervisor
- Branch Director
- Operations

4. Other Notifications

- Other: _____
- Other: _____

Attach Firing Operations Checklist to ICS-214



CARR FIRE

CA-SHU-007808

FINANCE MESSAGE

- Finance Section is located in Fusaro Building
 - Please come by the Time Unit and start your and update your FC-33
 - Vendors please drop off your agreements to the Time Unit
 - Shift Tickets need to be completed by line supervisor and turned and the end of each shift.
 - All injuries need to be reported to the COMP / CLAIMS Unit
 - All property Damage must be reported and documented
 - Please report any Vehicle Damage this includes Rental Vehicles
 - Local Government please check in with OES
 - Federal Time: Timekeeper on site.
 - **OFF-SITE FEEDING IS NOT APPROVED**
 - Water usage report needs to be turned in daily to the COMP / CLAIMS Unit
-
- **This fire is under Cost Apportionment**
 - **All DIVS, OPBD, STAM need to debrief with the Cost Apportionment Team Daily**
 - Cost Apportionment is located in the trailer directly across from Fusaro Hall

INCIDENT BILLING INFORMATION

CAL FIRE – SHASTA / TRINITY UNIT

875 CYPRESS AVE.
Redding Ca. 96001

Index Code: 2400

E-fund Billing Code: 013860

Federal P Cod⁻⁴²⁻PL1A6 (1502) [P]

SHIFT TICKET EXAMPLE

EMERGENCY SHIFT TICKET and EVALUATION FORM					Contractor Name		
Incident or Project Name LILAC INC		Incident Number CAMVU024612	Request Number E#		DOZER DUDE		
Agreement Number XXX - 000000 - 00					Operator #1 BOB SMITH		
					Operator #2 TOM SMITH		
Equipment Make CAT		Equipment Model / Type D6XM			Operator Furnished By: <input checked="" type="checkbox"/> Contractor <input type="checkbox"/> Government		
Serial Number FULL VIN#		Licence Number 1234567			Operating Supplies Furnished By: <input checked="" type="checkbox"/> Contractor <input type="checkbox"/> Government		
					Equipment Status		
					<input checked="" type="checkbox"/> Inspected <input checked="" type="checkbox"/> Under Agreement		
					<input type="checkbox"/> Released by Government		
					<input type="checkbox"/> Withdrawn by Contractor		
Date					Remarks/Comments **		
Mo / Day	Start	Stop	Work	(Circle) Hours	Days / Miles		
12/8	0700	2400	17		DIV M		
12/9	0001	0700	7		DIV M		
Vendor Rating					Govt. Rep. Name and Position - PRINT		
					Mike Weber		
Met Performance Expectations					Govt. Rep. Signature		
Equipment in Safe Working Condition					Mike Weber		
Operator Skill Level					Contractor Signature		
Operates Safely					Bob Smith		
Operator's Cooperation Level					Date		
Overall Performance					Time		
					08/04/15 0800		
* NOTE: Any rating of POOR requires an explanation in Comment Section.					CALFIRE 297		
**Final evaluation or for more documentation, use an ICS Form 230 or equivalent.					(Rev 3-2011)		
Pink - Finance		Blue - Home Unit HE Coordinator		Yellow - Vendor		White - Govt Representative	

EMERGENCY SHIFT TICKET and EVALUATION FORM					Contractor Name		
The responsible Government Officer will complete this form each shift					DUDE TRANSPORT		
Incident or Project Name LILAC INC		Incident Number CAMVU 024612	Request Number E #		Operator #1 BOB SMITH		
Agreement Number XXX - 000000 - 00					Operator #2 TOM SMITH		
Equipment Make TRANSPORT/ KENWORTH		Equipment Model / Type COZAD TRAILER /26 WHEELS			Operator Furnished By: <input checked="" type="checkbox"/> Contractor <input type="checkbox"/> Government		
Serial Number 1XP3ESMP14239012		Licence Number 9999999			Operating Supplies Furnished By: <input checked="" type="checkbox"/> Contractor <input type="checkbox"/> Government		
					Equipment Status		
					<input checked="" type="checkbox"/> Inspected <input checked="" type="checkbox"/> Under Agreement		
					<input type="checkbox"/> Released by Government		
					<input type="checkbox"/> Withdrawn by Contractor		
Date					Remarks/Comments **		
Mo / Day	Start	Stop	Work	(Circle) Hours	Days / Miles		
12/8	0700	2400	17		DIV M		
12/9	0001	0700	7		DIV M		
Vendor Rating					Govt. Rep. Name and Position - PRINT		
					Mike Weber		
Met Performance Expectations					Govt. Rep. Signature		
Equipment in Safe Working Condition					Mike Weber		
Operator Skill Level					Contractor Signature		
Operates Safely					Bob Smith		
Operator's Cooperation Level					Date		
Overall Performance					Time		
					08/04/15 0800		
* NOTE: Any rating of POOR requires an explanation in Comment Section.					CALFIRE 297		
**Final evaluation or for more documentation, use an ICS Form 230 or equivalent.					(Rev 3-2011)		
Pink - Finance		Blue - Home Unit HE Coordinator		Yellow - Vendor		White - Govt Representative	

Turn shift tickets into Finance.

SHIFT TICKET EXAMPLE

EMERGENCY SHIFT TICKET and EVALUATION FORM					Contractor Name												
Incident or Project Name LILAC INC			Incident Number CAMVU 024612		Request Number E or S # Here												
Agreement Number XXX - 000000 - 00					Operator #1 BOB SMITH												
Equipment Make FREIGHTLINER			Equipment Model / Type WATER TENDER 2500+ TYPE 1			Operator #2 Operator Furnished By: <input checked="" type="checkbox"/> Contractor <input type="checkbox"/> Government											
Serial Number LAST 8 OF VIN#			Licence Number 55555555			Operating Supplies Furnished By: <input checked="" type="checkbox"/> Contractor <input type="checkbox"/> Government											
Equipment Use (Circle) Hours Days / Miles					Equipment Status												
Date Mo / Day	Start	Stop	Work	Assignment		<input checked="" type="checkbox"/> Inspected <input type="checkbox"/> Under Agreement <input type="checkbox"/> Released by Government <input type="checkbox"/> Withdrawn by Contractor											
12/8	0001	0700	7	OFF SHIFT		Remarks/Comments ** ONE OPERATOR											
12/8	0700	1900	12	BASE CAMP													
12/8	1900	2400	5	OFFSHIFT													
Vendor Rating					Govt. Rep. Name and Position - PRINT												
<table border="1"> <tr> <th>Poor*</th> <th>Avg.</th> <th>Good</th> <th>Exc.</th> <th>N/A</th> </tr> <tr> <td></td> <td></td> <td></td> <td></td> <td></td> </tr> </table>					Poor*	Avg.	Good	Exc.	N/A						Mike Weber		
Poor*	Avg.	Good	Exc.	N/A													
Met Performance Expectations					Govt. Rep. Signature												
Equipment in Safe Working Condition					Mike Weber												
Operator Skill Level					Contractor Signature												
Operates Safely					Bob Smith												
Operator's Cooperation Level					Date												
Overall Performance					Time												
					08/04/15		0800										
* NOTE: Any rating of POOR requires an explanation in Comment Section.					CALFIRE 297												
**Final evaluation or for more documentation, use an ICS Form 230 or equivalent.					(Rev 3-2011)												
Pink - Finance		Blue - Home Unit HE Coordinator		Yellow - Vendor		White - Govt Representative											

EMERGENCY SHIFT TICKET and EVALUATION FORM					Contractor Name												
The responsible Government Officer will complete this form each shift																	
Incident or Project Name LILAC INC			Incident Number CAMVU 024612		Request Number E OR S # Here												
Agreement Number XXX - 000000 - 00					Operator #1 BOB SMITH												
Equipment Make PETERBUILT			Equipment Model / Type WATER TENDER 2500 + TYPE 1			Operator #2 BILL SMITH											
Serial Number LAST 8 OF VIN#			Licence Number 9999999			Operator Furnished By: <input checked="" type="checkbox"/> Contractor <input type="checkbox"/> Government											
Equipment Use (Circle) Hours Days / Miles					Operating Supplies Furnished By: <input checked="" type="checkbox"/> Contractor <input type="checkbox"/> Government												
Date Mo / Day	Start	Stop	Work	Assignment		Equipment Status											
12/8	0700	2400	17	DIV M		<input checked="" type="checkbox"/> Inspected <input type="checkbox"/> Under Agreement <input type="checkbox"/> Released by Government <input type="checkbox"/> Withdrawn by Contractor											
12/9	0001	0700	7	DIV M		Remarks/Comments ** 2 OPERATORS											
Vendor Rating					Govt. Rep. Name and Position - PRINT												
<table border="1"> <tr> <th>Poor*</th> <th>Avg.</th> <th>Good</th> <th>Exc.</th> <th>N/A</th> </tr> <tr> <td></td> <td></td> <td></td> <td></td> <td></td> </tr> </table>					Poor*	Avg.	Good	Exc.	N/A						Mike Weber		
Poor*	Avg.	Good	Exc.	N/A													
Met Performance Expectations					Govt. Rep. Signature												
Equipment in Safe Working Condition					Mike Weber												
Operator Skill Level					Contractor Signature												
Operates Safely					Bob Smith												
Operator's Cooperation Level					Date												
Overall Performance					Time												
					08/04/15		0800										
* NOTE: Any rating of POOR requires an explanation in Comment Section.					CALFIRE 297												
**Final evaluation or for more documentation, use an ICS Form 230 or equivalent.					(Rev 3-2011)												
Pink - Finance		Blue - Home Unit HE Coordinator		Yellow - Vendor		White - Govt Representative											

Turn shift tickets into Finance.



PUBLIC INFORMATION SECTION



Incident Information Line: (530) 225-2510
Incident Media Line: (530) 448-2466

Email Updates (sign up):
www.tinyurl.com/carrfire

STATUS	
Incident Start Date: 7/23/2018	Incident Start Time: 1:15 PM
Cause: Mechanical Failure of Vehicle	Acres:
Containment:	Total Personnel:

MEDIA – The California State Penal Code Section 409.5(d) allows the news media to enter scenes of disaster, riot or civil disturbance. Properly identified members of the news media should not be restricted from entering locations specified within the code. However, this does not include crime scenes, private property and does not imply that the news media may interfere with incident operations while they are in the areas of concern. More information can be found [here](#).



CAL FIRE SOCIAL MEDIA POLICY – When assigned to a CAL FIRE incident, you will adhere to the CAL FIRE Social Media Policy, Section 0691. You can find further information about the CAL FIRE Social Media Policy [here](#).



PHOTOGRAPHS AND VIDEOS OF INCIDENT – We are in a new era of media. Media no longer means news/broadcast industry, but now refers to anyone that has the capability to shoot video, photographs and post them onto social media sites in a matter of minutes. Unfortunately, we have seen some instances of photographs or videos that have depicted unsafe, unprofessional or embarrassing circumstances which are a serious breach of ethics. When this happens, it reflects poorly on all that are attached to this incident. Posting an inappropriate video, photo or blog comment could expose oneself to unwanted ramifications. It may be unsafe to shoot photos or video and a firefighter who is concentrating on a camera loses their situational awareness.

The Public Information Office would like copies of the video and pictures that you safely took while not in an emergency situation, fire suppression activity or in an overhead assignment. Bring your video and pictures to the Public Information trailer; they will be reviewed and possibly uploaded to our many CAL FIRE social media sites. Remember, we don't want photographs or videos that depict unsafe, unprofessional or embarrassing circumstances, which are a serious breach of ethics.

LOST AND FOUND – The Information Section will manage lost and found items for the incident. If you have lost an item please leave your contact information and what you have lost at the Information Section. If you have found an item on the incident, bring the item to the Information Section with your contact information as well.

MAIL SERVICE – The Information Section can assist you with sending and receiving mail. The address is Shasta District Fairgrounds 1890 Briggs St. Anderson CA. 96007

DEMOBILIZATION INSTRUCTIONS

CARR

CA-SHU-007808

DEMOB PROCEDURES

- CHECK THE DEMOB LIST EACH MORNING. YOU CAN FIND THE DEMOB LIST THROUGH THE “QR” CODE ON THE I.A.P. COVER OR ON LISTS POSTED THROUGHOUT CAMP. **ONLY REPORT TO DEMOB AT YOUR SCHEDULED TIME.** EARLY ADMITTANCE WILL NOT BE ALLOWED.
- **FLIGHT ARRANGEMENTS MUST BE MADE 48HRS PRIOR TO RELEASE.**
- REPORT TO DEMOB AT APPOINTMENT TIME TO RECEIVE A CHECKOUT FORM (ICS-221), THEN GO TO THE FOLLOWING UNITS TO OBTAIN THE NECESSARY SIGNATURES:
 - ✓ SUPPLY UNIT
 - ✓ COMMUNICATIONS UNIT
 - ✓ GROUND SUPPORT/VEHICLE INSPECTION***
 - ✓ DOCUMENTATION UNIT
 - ✓ TIME UNIT
 - ✓ TRAINING UNIT (IF APPLICABLE)
 - ✓ ACCOMMODATIONS (IF APPLICABLE)

***VEHICLE INSPECTION:

- THE DEMOB UNIT WILL INFORM YOU IF THE VEHICLE NEEDS TO BE INSPECTED.
- YOU MUST HAVE THE ICS-221 DEMOB FORM WITH YOU AT VEHICLE INSPECTION.
- A VEHICLE INSPECTION TIME WILL BE PROVIDED WHEN YOU INITIALLY ARRIVE TO THE DEMOBILIZATION UNIT.
- **DO NOT REPORT FOR VEHICLE INSPECTION PRIOR TO YOUR APPOINTMENT**

HAVE YOUR EQUIPMENT INVENTORY CARD READY WHEN HEADING TO VEHICLE INSPECTION.

RETURN THE COMPLETED ICS-221 FORM TO THE DEMOB UNIT AND TRAVEL HOME SAFE!





TRAINING

SPECIALIST MESSAGE

OFFICE LOCATION IS IN THE FUSARO BUILDING

TRAINEE'S: PLEASE CLOSE OUT YOUR TRAINING PACKAGE **PRIOR** TO STARTING DEMOB. WHEN YOU COME TO THE **TRAINING SPECIALIST** TO **CLOSE** A FILE, YOU MUST BRING THE FOLLOWING ITEMS:

- TRAINER (EVALUATOR)
- YOUR **INITIATED** POSITION TASK BOOK IN FOR REVIEW. THE PTB MUST BE COMPLETED BY THE TRAINER (EVALUATOR)
- COMPLETED EVALUATION RECORD
- COMPLETED INDIVIDUAL PERFORMANCE EVALUATION (ICS 225).
Please be specific to documenting tasks in the narrative section. This would include tasks such as: developing hoselays, handline construction, structure defense, briefings, logistical support, speaking with aircraft.

TNSP – Dave Randolph (805) 857-4820

Peer Support Team Message:

CARR INCIDENT PEER SUPPORT: (916) 591-9004

The gravity of this event is large. Many of us have been impacted by the events that have occurred as well as past incidents.

A peer support team has been assembled and Peers are available at the ICP. The Peer Support contact number is (916)-591-9004, which is available 24/7.

Some of the signs and symptoms you may be experiencing include, but are not limited to:

Irritability, lack of sleep, quick to anger, withdrawal, above average tobacco use, an increase in negative coping mechanisms such as excessive alcohol and/or substance abuse. You might experience lack of appetite, isolate yourself, and various other unexplained responses to normal every day events.

You may not be experiencing these symptoms now or during this fire incident. However, you may find yourself experiencing them when you return to your home or unit. You may find yourself being triggered by a past event that has impacted you, while assigned to future incidents. A sight, sound, smell, or touch could trigger a memory that previously existed, but you may not have been aware of.

If you find yourself in this situation and need to talk to someone contact your Employee Assistance Program (EAP). EAP programs are here to help. It is important to be able to talk to someone and get stuff off your chest vs carrying this around for your career.

Transportation Map

Carr Incident
CA-SHU-007808



From ICP to Lakehead Camp
32 Miles North on I-5 FWY
Exit 702 Lakeshore Dr.
Right on Antler School Road

East Side of Fire from ICP
Left onto 273/Eureka Way for 4 miles

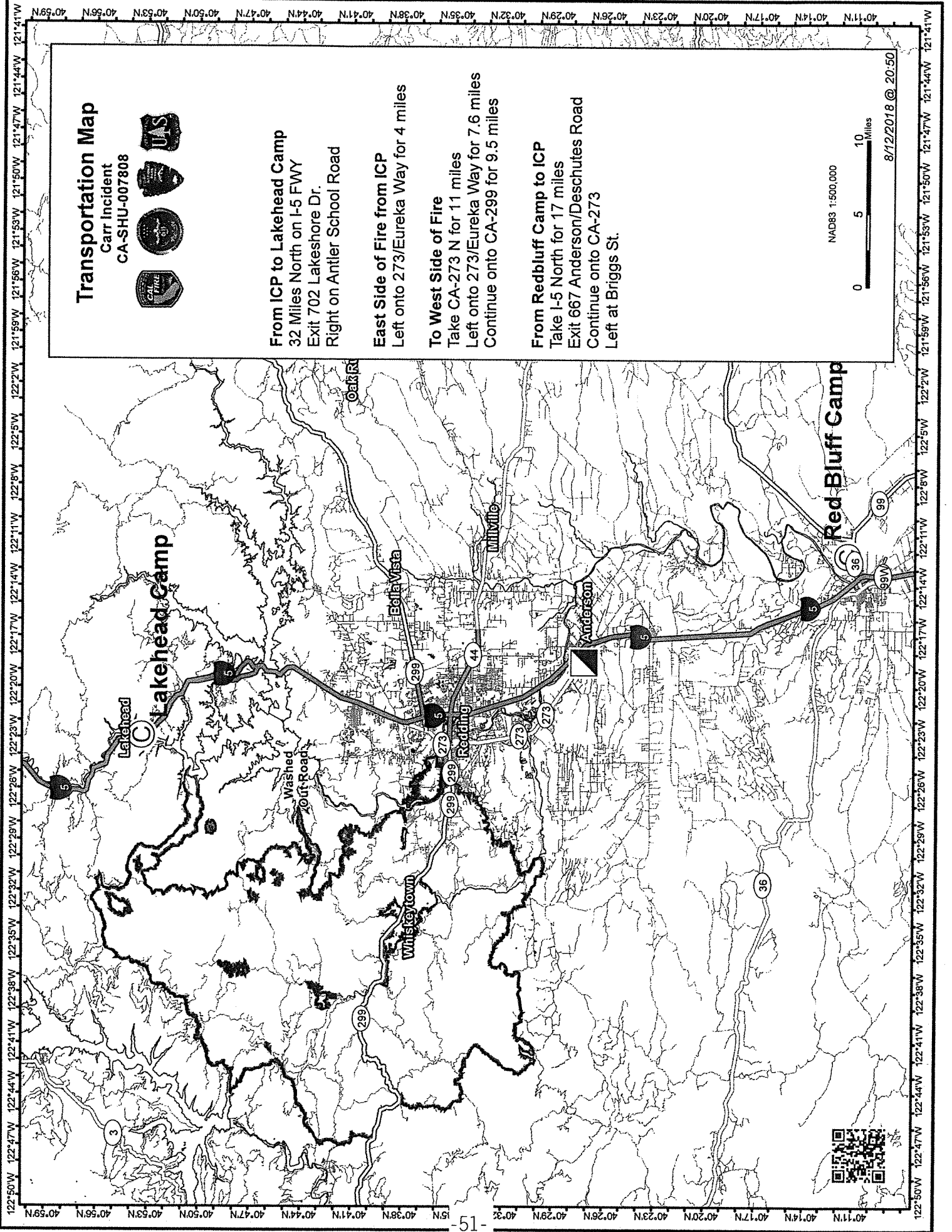
To West Side of Fire
Take CA-273 N for 11 miles
Left onto 273/Eureka Way for 7.6 miles
Continue onto CA-299 for 9.5 miles

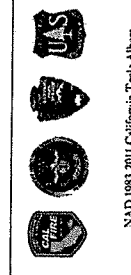
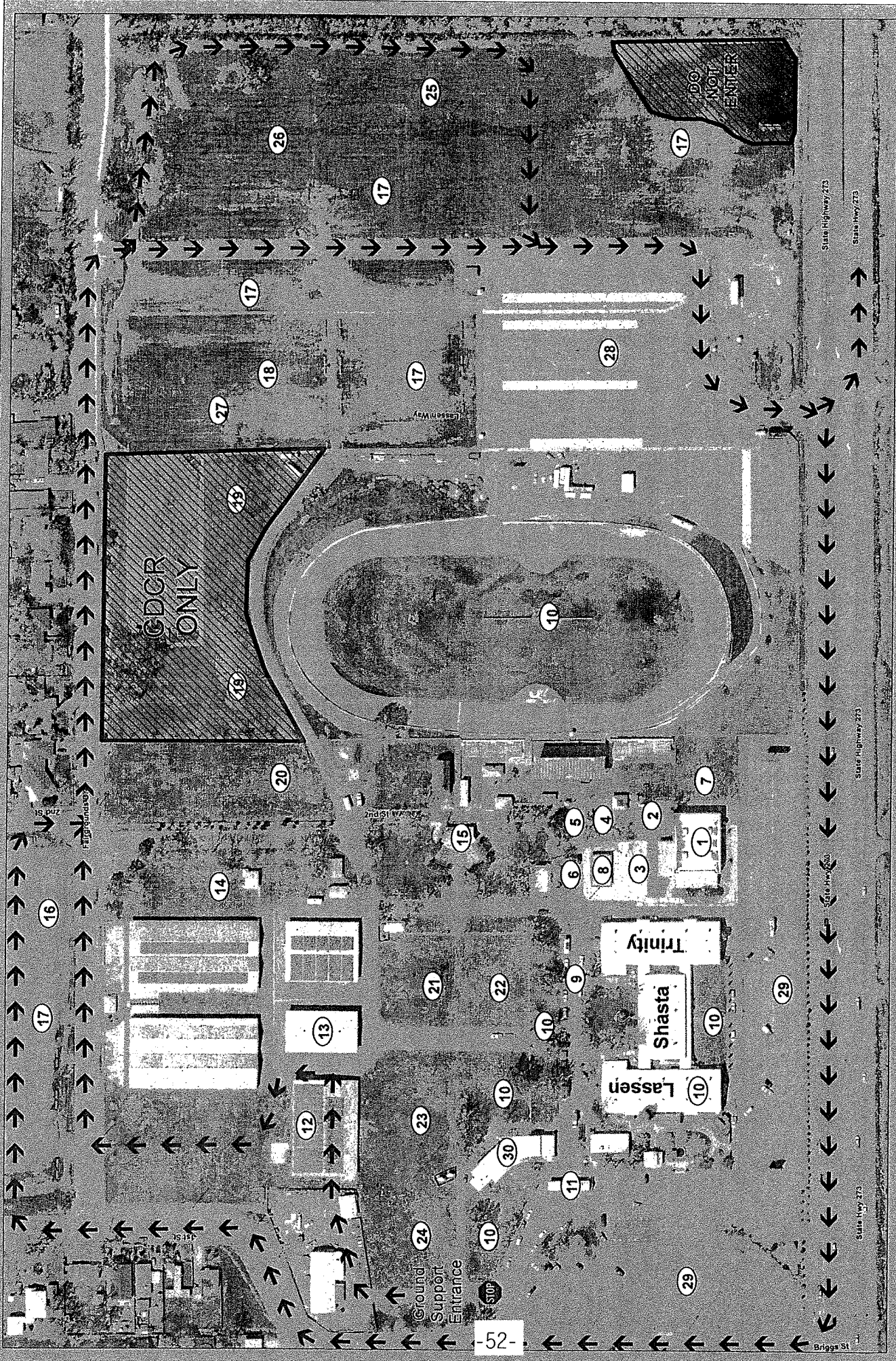
From Redbluff Camp to ICP
Take I-5 North for 17 miles
Exit 667 Anderson/Descutes Road
Continue onto CA-273
Left at Briggs St.

NAD83 1:500,000



8/12/2018 @ 20:50





Facilities Map CARR INCIDENT CA-SHU-7808

- 1. Check-in/Finance
- 2. Logistics-Facilities
- 3. Communications
- 4. Safety/OPS
- 5. Liaison
- 6. IC
- 7. GIS
- 8. Accommodations
- 9. OES
- 10. Crew Sleeping
- 11. PIO
- 12. Ground Support
- 13. Supply
- 14. Kitchen
- 15. Briefing
- 16. Lunches/Water/Ice
- 17. Engine Parking
- 18. CDCR Parking
- 19. CDCR
- 20. MERT
- 21. Laundry
- 22. Showers
- 23. Mobile Sleepers
- 24. CCC Sleeping
- 25. Fuel
- 26. Transport Parking
- 27. Weed Wash
- 28. Crew Parking
- 29. Overhead Parking
- 30. Rehab Lounge

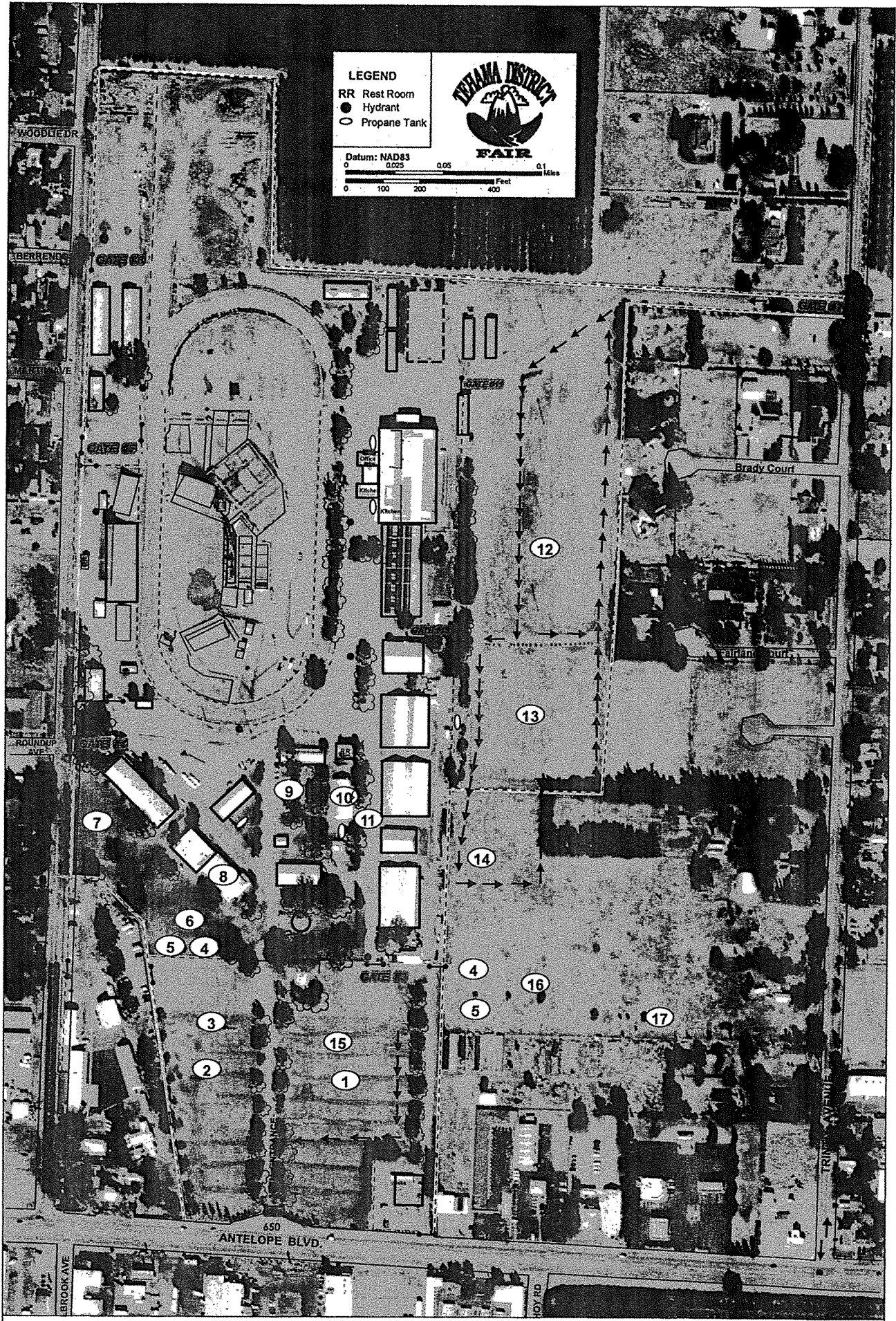


LEGEND

RR Rest Room
 ● Hydrant
 ○ Propane Tank

**TEHAMA DISTRICT
FAIR**

Datum: NAD83
 0 0.05 0.1 Miles
 0 100 200 400 Feet






- 1. Engine Fuel
 - 2. Engine/Overhead Parking
 - 3. Ice/Water/Lunches
 - 4. Laundry
 - 5. Showers
 - 6. Tent W/AC Sleeping
 - 7. Personnel Tents
 - 8. LOGS
 - 9. Food
 - 10. Supply
 - 11. Medical
 - 12. National Guard Fuel
 - 13. National Guard Parking
 - 14. Kitchen
 - 15. Engine Parking
 - 16. Tents
 - 17. Smaller Trailers
- *Laundry/Showers Available to All

Facilities Map
 CA-53-NCIDENT
 CASHU-7808





		<table border="0"> <tr> <td>1. Parking</td> <td>5. Facilities</td> <td>9. Lunch/Ice/Water</td> </tr> <tr> <td>2. Laundry</td> <td>6. Kitchen</td> <td>10. Additional Parking</td> </tr> <tr> <td>3. Showers</td> <td>7. Dining Hall</td> <td>11. Fuel</td> </tr> <tr> <td>4. Sleeping</td> <td>8. Supply</td> <td>12. Tent Sleeping</td> </tr> </table>	1. Parking	5. Facilities	9. Lunch/Ice/Water	2. Laundry	6. Kitchen	10. Additional Parking	3. Showers	7. Dining Hall	11. Fuel	4. Sleeping	8. Supply	12. Tent Sleeping	<p>Facilities Map Lakehead Camp CARR INCIDENT CA-SHU-7808</p>	 <p><small>NAD 1983 2011 California Trade Show</small></p>
1. Parking	5. Facilities	9. Lunch/Ice/Water														
2. Laundry	6. Kitchen	10. Additional Parking														
3. Showers	7. Dining Hall	11. Fuel														
4. Sleeping	8. Supply	12. Tent Sleeping														



CARR INCIDENT LOGISTICS MESSAGE



SERVICES SCHEDULE

Breakfast:	0500-1000
Dinner:	1700-2200
Sack Lunch Distribution:	0500-2100
Laundry Service:	0500-2300
Supply:	0600-2200
Saw Shop:	0600-2200
Showers:	0600-2300
Fuel:	24hr Service

FUEL TRUCK LOCATIONS

Interstate Oil:	Incident Base
Cross Petroleum:	Incident Base
SST Oil Truck #1:	Red Bluff
Mean Gene Gas:	Red Bluff
SST Oil Truck #2:	French Gulch, DP 30
Ed Staubs and Son:	Dog Creek, DP 33

REFRIDGERATION TRUCKS and HYDRATION STATIONS (ICE, WATER and GATORADE)

- DP 30, French Gulch

**THIS PAGE
INTENTIONALLY LEFT
BLANK**

