

Carr
INCIDENT
#CA-SHU-007808
INCIDENT ACTION PLAN



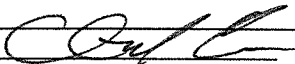
OPERATIONAL PERIOD

8/17/2018

to

8/18/2018

ORGANIZATION ASSIGNMENT LIST (ICS 203)

1. Incident Name: Carr		2. Operational Period: Date From: 8/17/2018 Time From: 0700		Date To: 8/18/2018 Time To: 0700	
3. Incident Commander(s) and Command Staff:			7. Operation Section:		
IC/UC's	B.Gouvea/ G. Bertelli (T)		Chief	T. Brownell/ A. McBath (T) Day	
Deputy	M. Van Loben Sels/ S.Spinharney (T)/ B. Newburn (T)		Deputy	S. Crawford/ M. Wink (T)	
Safety Officer	B. Carter/ A. Stornetta (T)		Night Ops	F. Berbena	
Information Officer	E. Smith/ B. Mercado (T)				
	J. Clingsmith (T)		Branch	I	E. Darnall (12Hr)
Liaison Officer	T.Crawford/ D. Pender/ B.Smith (T)		Division/Group	T/U/V/X/Y	L. Moore (12Hr)/ A. Sanchez (T)
			Division/Group		
4. Agency/Organization Representatives:			Branch	II	E. Darnall (12Hr)
Agency	Name		Division/Group	A	R. Valles
Sierra Pacific Industries	N.Kroncki		Division/Group	B/C	J. Peter
Shasta County SO	A.Bertain		Division/Group		
County Roads Dept.	(530) 225-5661		Branch	III	L. Turman
Cal OES AREP	P.Titus/ D. Franklin		Division/Group	D/F/H	M. Wallen (9230C)
PG&E	M. Weaver		Division/Group	I/M	C. Swensen/ M. Bertrand (T)
CDCR	M.Ahlin		Division/Group		
CCC	K. McDonald/ S. Borowski		Division/Group		
State Parks	A. Wright		Branch	IV	M. Fields
CHP	S. Fredrick		Division/Group	N	C. Martinelli
Red Cross	R. Yoder		Division/Group	O	J. Keown
WAPA	B. Adams		Division/Group	HERO Group	D. Sykes
BLM	J. Mata		Branch	V	A. Latta
NPS	B. Love		Division/Group	P/S	B. Lanning
5. Planning Section:			Division/Group		
Chief	M. Petro		Branch	Supp Repair	B. Rowe (12Hr)
Deputy	C. Carrera		Division/Group	Redding Group	M. Rosan (12Hr)
Resource Unit	Carlos/Tucker/Corey/Reneau		Division/Group	Lakehead Group	J. McElroy (12Hr)
Situation Unit	R. DeCamp/ J. Henderson		Division/Group	Shasta Group	S. Larsen (12Hr)
Documentation Unit	J.Patterson		Division/Group	Trinity Group	B. Rodgers (12Hr)
Demobilization Unit	T. Shevenell/ A. Klem		Division/Group	Ono Group	D. Dresselhaus (12Hr)
GISS	T. Werle/ E. Tumbleson (T)/ K. Towers		Division/Group	Buckhorn Group	J. Washburn (12Hr)
FBAN	D.Boursier		Division/Group	Baer Group	D. Havlina (12Hr)
IMET	R. Walbrun/ S. Nelaimischkies (T)		Branch		
Training Tech Spec	D. Randolph		Staging Area	Anderson	S.Bidwell (T)
Hired Equipment Tech	D. Grandbois		Staging Area		
6. Logistics Section			Air Operations Branch		Director: T. Stepanovich
Chief	J. Morris		Air Support Grp Sup		M.Hill/ T. Smith (T)
Deputy	C. White		Helibase Manager		P. York
Supply Unit	L. Sroly/ M. Brabo (T)				
Facilities Unit	J. Guerra/ B. Little (T)				
8. Finance/Administration Section:					
Ground Support Unit	P. Mock/ J. Wilson		Chief	J. Franklin	
Communications Unit	T. Webb		Deputy	B. Counts	
Medical Unit	J. Winnen		Time Unit	S.Thompson	
Motel Tech Spec	M. Aldrich/ S. Vaquero		Procurement Unit	C. Craig/ T. Meyers	
Ordering Manager	A. Gettman/ J. Tompkins		Comp/Claims Unit	M. Boone	
Food Unit	M. Mondragon		Cost Unit	S. Cain	
Prepared By: Name:	Chris Carrera	Position/Title:	PSC	Signature: 	
ICS 203		Date/Time:	8/16/2018 2216 hrs		



Fire Weather Forecast

FORECAST NO: 23
PREDICTION FOR: DAY/NIGHT SHIFT
SHIFT DATE: August 17, 2018
TIME/DATE ISSUED: August 16, 2018 2000 PDT

NAME OF FIRE: Carr
UNIT: CA-SHU
SIGNED: Ryan Walbrun
Incident Meteorologist

WEATHER DISCUSSION: Weather changes remain subtle today as an upper level trough will pass over the region. This feature may bring some more instability aloft which could translate to Haines indices of 5 during the afternoon burn period. Otherwise southerly upcanyon winds will continue across most of the fire area and especially in Branch IV and V. Humidity values will trend drier this afternoon behind the trough passage with readings to 15% or less. There will likely be abundant smoke over Branch IV and V this morning but the inversion should begin to lift by 1400 hours which may lead to increased fire behavior. Humidity recovery will be poor tonight for any burn operations. Seasonably hot and dry conditions continue into the weekend.

WEATHER FORECAST FOR FRIDAY:

WEATHER: Smoke and Haze. Continued hot and dry. Southerly winds increasing after 1500 hours.

MAX TEMPERATURES: 89-97°F. Trend of 1-4 degrees warmer.

MIN HUMIDITY: 12-20%. Little change or slightly drier.

20-FOOT WIND:

VALLEY - Downslope/downvalley 2-5mph early becoming upslope/upvalley 3-5 mph with gusts to 10 mph after 1300.

MIDSLOPES/RIDGETOP- Northerly winds 3-6 gust 8 mph before 1100 becoming south 5-8 gusts 12-15 mph after 1400.

HAINES INDEX: 5 if smoke free

INVERSION: Weak to moderate inversion breaking after 1400

FRIDAY NIGHT:

WEATHER: Smoke settling over Branch IV and V. Otherwise clear with poor RH recovery.

MIN TEMPERATURES: 59-68°F. Little change

MAX HUMIDITY: 30-40% Trend of 10-15% drier!

20-FOOT WIND:

SLOPE/VALLEY - Downslope/downvalley 2-5 mph after 2200. Then light North overnight.

RIDGETOP - Southwest 4-8 gust 12 mph through sunset. Turning Northerly 3-6 gust 8-10 mph late.

EXTENDED FORECAST:

SATURDAY THROUGH WEDNESDAY: Building high pressure will bring a warming trend this weekend as temperatures climb above 100 for lower elevations. Humidity values will be low with 9-19% days and poor recovery only around 30% at night. This will bring long burn periods with high probability of ignition for any spots over the line or new starts. Skies will be sunny except lingering smoke northern branches as well as close to the Hirz Fire.

SAFETY MESSAGE: Warmer and drier is a Watchout Situation. Monitor humidity trends, especially afternoon and overnight. There is also a Fuels and Fire Behavior Advisory in effect for the region. Avoid complacency and monitor for changes in the inversion as skies turn sunny. Heat related issues haven't been talked about but as work duties change continue to focus on hydration.

FIRE BEHAVIOR FORECAST

FORECAST NUMBER: 23	TYPE OF FIRE: Wildland Fire
FIRE NAME: CARR	OPERATIONAL PERIOD: 24hr 8/17 (0700-0700)
DATE ISSUED: 08/16	TIME ISSUED: 2100
UNIT: SHU	SIGNED: D. Boursier FBAN/LTAN

INPUTS

WEATHER SUMMARY

****Hot and Dry with light and variable winds****
See Weather Forecast in IAP.

OUTPUTS

GENERAL: Transition to fuels and topography driven activity.

Hazards throughout the fire area include: interior green islands and slopes, ash pits, fire weakened trees, dust devils, and roll-out.

New starts will see rapid growth and establishment. Smoke columns will contribute to long range spotting.

In the absence of weather conditions outside the forecast or extreme fire behavior conditions expect:

	Max. Flame Length	Max. Rate of Spread	Spotting	Probability of Ignition
Grass	< 5' (1.5m)	40 ch/hr (1.2 km/hr)	< ½ mile (.8 km)	89%
Grass/Shrub Mix	< 5' (1.5m)	20 ch/hr (.6 km/hr)	< ½ mile (.8 km)	89%
Timber Understory	< 8' (2.5m)	10 ch/hr (.2 km/hr)	< ¾ mile (1.2 km)	89%
Timber Litter	< 3' (1m)	5 ch/hr (.1 km/hr)	< ¼ mile (.4 km)	89%

****minimum safety zone size for brush fuels is ¾ acre (.3 Ha) for a Strike Team of Engines.**

SPECIFIC:

Branch I, II & III

Smoldering activity. Dormant heat areas may flare with air movement. Interior islands and green slopes with wind exposure alignment may see activity. Torching and short crown runs may occur with preheating or steeper terrain. Expect most activity to occur as afternoon winds increase and smoke clears. Roll-out and spotting potential across established lines. Keep alert to unburned islands, fire weakened trees, ash pits, and dust devils.

Branch IV and V

Predominately surface fire spread. Expect areas with understory preheating via slash piles, fuel jackpots or topography to transition into canopy. Interior Torching and short crown runs possible. Smoke shading may temper fire behavior. Look for areas of fuels treatment, timber harvest or previous fire activity for safety or control objectives. Roll-out and spotting potential across established lines. Anticipate locations above drainages to be susceptible spotting areas.

AIR OPERATIONS:

I-5 Corridor should remain smoked in for majority of burn period (Div. O and P).
Mixing height: 8,000 ft. AGL, Transport winds: SW 10 mph, Sunrise 0622, Sunset 2007.

SAFETY

The high operational tempo of a PL5 (planning level 5) requires heightened awareness of Fire Order #3:
Base all actions on current and expected behavior of the fire.

SAFETY MESSAGE/PLAN (ICS 208)

INCIDENT NAME:
CARR FIRE CA-SHU-007808

Operational Period: Date From: 8/17/18 Date to: 8/18/18
Time From: 0700 Time to: 0700

MAJOR HAZARDS AND RISKS

Driving

Drive defensively!!! Steep, narrow, dusty roads throughout fire area. Maintain safe following distances and appropriate speed when traversing roads. Roads are being heavily impacted by fire suppression, recovery, and the repopulation. Work with Division Supervisors to mark intersections, dead end roads, and speed limitations. Communicate on tactical channels when driving on one lane roads. HWY 299 AND LOCAL SCHOOLS OPEN

Fatigue/Complacency

Stay alert and engaged to maintain situational awareness. Focus on process instead of outcome.

Continuously learn and adapt to new challenges. Recognize your blind spots and look for vulnerabilities. Be alert for signs of fatigue and take breaks as necessary.

SNAGS

HAZARD TREE INDICATORS: Trees have been burning for an extended period of time. High risk tree species (rot and shallow root system). Numerous down trees. Dead or broken tops and limbs overhead. Accumulation of down limbs. Absence of needles, bark or limbs. Leaning or hung-up trees. Water or retardant drops in the area have broken or weakened limbs in the canopy.

Hydration/Nutrition

Drink plenty of fluids throughout the day and eat accordingly. Balance electrolyte drinks at a 3:1 water to sport drink ratio. Address dehydration concerns immediately upon symptom onset. Keep up on personal hygiene. After strenuous work, continue drinking to replace fluid losses.

Communications

Confirm all personnel have latest clone, test prior to going to line. Utilize human repeaters as necessary. Use proper terminology. Avoid using squirrel channels.

Stump Holes/Ash Pits

Ash pits are an inherent and hidden risk to firefighters that can cause serious burns and injuries. Wear all PPE. Flag hazardous areas and watch for stumps that have been smoldering for multiple days.

Accountability

Be responsible for your personal and resource accountability. Maintain proper communications with your forces, your supervisor and adjoining forces. Give clear instructions and ensure they are understood. Make sure Safety Zones are known for work areas.

Boat/Water Safety: A briefing on the watercraft shall occur prior to departure. PFD's will be worn within 10' of the water line. Watercraft transportation is available after dark for emergencies only. A weather forecast shall be obtained prior to launching. Follow manufacturer recommendations for safe operation

Powerline Safety: Treat all powerlines as energized. Follow *Power Line Safety* guidelines (IRPG pg. 24)

Prepared By: Anthony Stornetta

Position/Title: SOF1(T)

Signature: 

-5-

LINE EMERGENCY REPORTING PROCEDURES

- Declare a "LINE EMERGENCY" on the COMMAND CHANNEL.

- Identify:
 - TYPE _____
 - SEVERITY _____
 - POINT OF CONTACT _____

- Identify resource needs, i.e., ambulance, hoist, REMS, Law Enforcement, etc.


- Provide COMMUNITIONS the following information:
 - CHIEF COMPLAINT: _____
 - LOCATION OF PATIENT: _____
 - TRANSPORTATION REQUEST BY: AIR ____ GROUND ____
 - DIVISION _____ CREW _____
 - POINT OF PICKUP _____
 - LAT _____ LONG _____
 - IS EMT WITH THE PATIENT: YES ____ NO ____
 - AGE _____
 - SEX: MALE ____ FEMALE ____

****ALL EMERGENCIES: Secure the area and identify witnesses for later investigation. Keep an accurate log of events****

ASSIGNMENT LIST (ICS 204)

1. Incident Name: <p style="text-align: center;">Carr</p>		2. Operational Period: Date From: 08/17/18 Date To: 08/18/18 Time From: 0700 Time To: 0700			3. Branch: II Div/Group: A Alpha		
4. Operations Personnel: Operations Section Chief: T. Brownell/ A. McBath (T) Day Night Ops: F. Berbena Branch Director: E. Darnall (12Hr) Branch Safety: R. Diaz Division/Group Supervisor: R. Valles							
5. Resources Assigned:		** Resources Below in Bold are 12 Hour **				Reporting Location, Special Equipment, Remarks, Notes, and Information Time Location	
Resource Identifier	ALS	Leader	Personnel	Request #			
STC XSB 1521C		Widling, Alan	22	E-427	0700-0700	DP 27 / 18	
T/F CARR #20		Brady/M.Lilienthal/C.Egge	20		0700-1900	DP 27 / 18	
T/F CARR #23		R.Seymour/A.Madden	19		0700-1900	DP 27 / 18	
STG SHU 9246G		Davis, Jim	33	C-116	0700-0700	DP 27 / 18	
STG TGU 9252G		Brown, Matt	35	C-7	0700-0700	DP 27 / 18	
CRW CNA TFD		Rodney, Jared	85		0700-1900	DP 27 / 18	
W/T PVT E-206		Holden, Jesse	2	E-206	0700-0700	DP 27 / 18	
W/T PVT E-356		Miller, Tony	2	E-356	0700-0700	DP 27 / 18	
W/T PVT E-399		Hubbard, Warren	2	E-399	0700-0700	DP 27 / 18	
W/T PVT E-642		Kelly, Tom	2	E-642	0700-0700	DP 27 / 18	
W/T PVT E-643		Hughes, David	2	E-643	0700-0700	DP 27 / 18	
FALM O-671		Carter, Zack	2	O-671	0700-1900	DP 27 / 18	
FEMP SALAZAR O-994	ALS	Salazar, Daniel	1	O-994	0700-0700	DP 27 / 18	
6. Work Assignments: Fall hazard trees, and trees that will threaten control lines. Mop up 500 feet or 100%. Pull hose lays. Backhaul garbage, hose, and water. Patrol.							
7. Special Instructions: Identify for backhaul any hose and equipment in the fire perimeter.							
8. Communications (radio and/or phone contact numbers needed for this assignment):							
Name	Ch	Function	Rx Freq	Rx Tone	Tx Freq	Tx Tone	Notes
SHA CMD	1	COMMAND	154.4300	136.5	159.0150	123.0 (T2)	(T2) BASS MTN
VTAC12	13	TACTICAL	154.4525	156.7 (T6)	154.4525	156.7 (T6)	
CALCORD	15	MEDICAL	156.0750	156.7 (T6)	156.0750	156.7 (T6)	MEDICAL
A-G CDF T17	6	A-G	159.3150	192.8	159.3150	192.8	A-G CDF TAC 17
GUARD	16	EMERGENCY	168.6250	0	168.6250	110.9	EMERGENCY USE ONLY
9. Prepared by: Name: B.J. Corey		Pos/Title: RESL		Signature:			
ICS 204		Date/Time: 8/16/2018		2216 hrs			

ASSIGNMENT LIST (ICS 204)

1. Incident Name: Carr		2. Operational Period: Date From: 08/17/18 Date To: 08/18/18 Time From: 0700 Time To: 0700				3. Branch: III Div/Group: I/M India	
4. Operations Personnel: Operations Section Chief: T. Brownell/ A. McBath (T) Day Night Ops: F. Berbena Branch Director: L. Turman Branch Safety: N. Martino Division/Group Supervisor: C. Swensen/ M. Bertrand (T)							
5. Resources Assigned:		** Resources Below in Bold are 12 Hour **				Reporting Location, Special Equipment, Remarks, Notes, and Information Time Location	
Resource Identifier	ALS	Leader	Personnel	Request #			
STC HUU 9121C		Murphy, Allison	17	E-681	0700-0700	DP 32	
STC CZU 9171C		Dellamonica, Jake	16	E-305	0700-0700	DP 32	
T/F TX TF 1		Byers, David	17	E-1223	0700-0700	DP 32	
T/F TX TF 2		Denzer, Randy	20	E-1224	0700-1900	DP 32	
T/F TX TF 4		Brinkkoeter, Darren	18	E-1226	0700-1900	DP 32	
CRW CNA TFA		Schlickheiser, John	109	C-9027	0700-1900	DP 32	
CRW CNA TFC		Ruiz, Jennifer	118		0700-1900	DP 32	
DOZ PVT E-52		Cattaneo, Angelo	2	E-52	0700-0700	DP 32	
DOZ PVT E-56		Caton, Jamie	2	E-56	0700-0700	DP 32	
DOZ PVT E-409		Morrison, Matthew	2	E-409	0700-0700	DP 32	
W/T PVT E-127		Mayberry, Steve	2	E-127	0700-0700	DP 32	
W/T PVT E-640		Bendall, John	2	E-640	0700-0700	DP 32	
EXC PVT E-1257		Pereira, Kyle	1	E-1257	0700-1900	DP 32	
GRD PVT E-1297		Helie, Brian	1	E-1297	0700-1900	DP 32	
TFLD SHEARS O-200163		Shears, Mark	1	O-200163	0700-1900	DP 32	
HEQB PRIDEMORE (T) O-559		Pridemore, Travis	1	O-559	0700-0700	DP 32	
FEMP LAROWE O-1071	ALS	Larowe, Ryan	1	O-1071	0700-0700	DP 32	
FEMT ADAMS O-951		Adams, Greg	1	O-951	0700-0700	DP 32	
6. Work Assignments: Hold fire in planned lines. Mop up 500 feet or 100%. Backhaul garbage, hose, and water.							
7. Special Instructions: Identify for backhaul any hose and equipment in the fire perimeter.							
8. Communications (radio and/or phone contact numbers needed for this assignment):							
Name	Ch	Function	Rx Freq	Rx Tone	Tx Freq	Tx Tone	Notes
SHA CMD	1	COMMAND	154.4300	136.5	159.0150	123.0 (T2)	(T2) BASS MTN
CDF T26	7	TACTICAL	159.2925	192.8 (T16)	159.2925	192.8 (T16)	
CALCORD	15	MEDICAL	156.0750	156.7 (T6)	156.0750	156.7 (T6)	MEDICAL
A-G CDF T17	6	A-G	159.3150	192.8	159.3150	192.8	A-G CDF TAC 17
GUARD	16	EMERGENCY	168.6250	0	168.6250	110.9	EMERGENCY USE ONLY
9. Prepared by: Name: B.J. Corey Pos/Title: RESL Signature: 							
ICS 204		Date/Time: 8/16/2018		2216 hrs			

ASSIGNMENT LIST (ICS 204)

1. Incident Name: Carr		2. Operational Period: Date From: 08/17/18 Date To: 08/18/18 Time From: 0700 Time To: 0700				3. Branch: IV Div/Group: N November **Day**	
4. Operations Personnel: Operations Section Chief: T. Brownell/ A. McBath (T) Day Night Ops: F. Berbena Branch Director: M. Fields Branch Safety: R. Fisher/ M. Cobb (T) Division/Group Supervisor: C. Martinelli							
5. Resources Assigned:		**Resources below are 12 Hour Day resources**				Reporting Location, Special Equipment, Remarks, Notes, and Information Time Location	
Resource Identifier	ALS	Leader	Personnel	Request #			
STC SHF 3676C		Zaharris, Adam	26	E-1219	0700-1900	Lakehead Camp	
ENG T6 WAX WORLAND 64		Nelson, Troy	3	E-234	0700-1900	Lakehead Camp	
CRW CNF DESCANSO CREW 5		Healy, Patrick	21	C-200014	0700-1900	Lakehead Camp	
CRW PVT C-200000		Campbell, Brandon	20	C-200000	0700-1900	Lakehead Camp	
CRW PVT C-200001		Campbell, Jason	20	C-200001	0700-1900	Lakehead Camp	
DOZ PVT E-200006		Warner, Gary	3	E-200006	0700-1900	Lakehead Camp	
DOZ PVT E-200018		Sale, Ben	2	E-200018	0700-1900	Lakehead Camp	
W/T PVT E-1158		Hodgson, Carrie	1	E-1158	0700-1900	Lakehead Camp	
W/T PVT E-1159		Dahl, Mark	1	E-1159	0700-1900	Lakehead Camp	
EXC PVT E-958		Hackworth, Doug	1	E-958	0700-1900	Lakehead Camp	
GRD PVT E-200012		Janc, Richard	1	E-200012	0700-1900	Lakehead Camp	
TFLD RHODES O-200159		Rhodes, Jamie	1	O-200159	0700-1900	Lakehead Camp	
6. Work Assignments: Hold fire in planned lines. Improve and hold control lines. Mop up 300 feet or 100%. Backhaul garbage, hose, and water.							
7. Special Instructions: ***BR IV resources are to return to Anderson Camp following shift.*** Identify for backhaul any hose and equipment in the fire perimeter.							
8. Communications (radio and/or phone contact numbers needed for this assignment):							
Name	Ch	Function	Rx Freq	Rx Tone	Tx Freq	Tx Tone	Notes
SHA CMD	1	COMMAND	154.4300	136.5	159.0150	123.0 (T2)	(T2) BASS MTN
VFIRE 24	8	TACTICAL	154.2725	156.7 (T6)	154.2725	156.7 (T6)	
CALCORD	15	MEDICAL	156.0750	156.7 (T6)	156.0750	156.7 (T6)	MEDICAL
A-G CDF T17	6	A-G	159.3150	192.8	159.3150	192.8	A-G CDF TAC 17
GUARD	16	EMERGENCY	168.6250	0	168.6250	110.9	EMERGENCY USE ONLY
9. Prepared by: Name: B.J. Corey Pos/Title: RESL ICS 204 Date/Time: 8/16/2018 2216 hrs Signature:							

ASSIGNMENT LIST (ICS 204)

1. Incident Name: Carr		2. Operational Period: Date From: 08/17/18 Date To: 08/18/18 Time From: 0700 Time To: 0700			3. Branch: Supp Repair Div/Group: Redding Group		
4. Operations Personnel: Operations Section Chief: T. Brownell/ A. McBath (T) Day Night Ops: F. Berbena Branch Director: B. Rowe (12Hr) Division/Group Supervisor: M. Rosan (12Hr)							
5. Resources Assigned:		** Resources Below in Bold are 12 Hour **			Reporting Location, Special Equipment, Remarks, Notes, and Information Time Location		
Resource Identifier	ALS	Leader	Personnel	Request #			
CRW BLM WHISKEYTOWN WFM		Preston, Robert	5	O-1065	0700-1900	L. Springs Rd.	
DOZ PVT E-87		White, Dusty	1	E-87	0700-1900	L. Springs Rd.	
DOZ PVT E-858		Sanders, Danny	1	E-858	0700-1900	L. Springs Rd.	
DOZ PVT E-879		Klauer, Jim	1	E-879	0700-1900	L. Springs Rd.	
W/T PVT E-1181		Baldwin, Crystal	1	E-1181	0700-1900	L. Springs Rd.	
EXC PVT E-1143		Mcbride, Andrew	1	E-1143	0700-1900	L. Springs Rd.	
EXC PVT E-1144		Anderson, Todd	1	E-1144	0700-1900	L. Springs Rd.	
EXC PVT E-1190		Ingram, Brad	1	E-1190	0700-1900	L. Springs Rd.	
EXC PVT E-1200		White, Bill	1	E-1200	0700-1900	L. Springs Rd.	
EXC PVT E-1255		Williams, john	1	E-1255	0700-1900	L. Springs Rd.	
FALM O-852		Mills, Shane	2	O-852	0700-1900	L. Springs Rd.	
READ KAWAHARA O-200183		Kawahara, Monte	1	O-200183	0700-1900	L. Springs Rd.	
FOBS (T) SHEW O-492		Shew, Nicholas	1	O-492	0700-1900	L. Springs Rd.	
DPRO (T) BUTCHER		Butcher, Jason	1	O-635	0700-1900	L. Springs Rd.	
HEQB SILVA O-282		Silva, Joey	1	O-282	0700-1900	L. Springs Rd.	
HEQB (T) FARNSWORTH O-281		Farnsworth, Joe	1	O-281	0700-1900	L. Springs Rd.	
6. Work Assignments: Repair fire lines, spread berms and slash piles. Repair fence. Identify suppresions repair activities.							
7. Special Instructions: Identify for backhaul any hose and equipment in the fire perimeter.							
8. Communications (radio and/or phone contact numbers needed for this assignment):							
Name	Ch	Function	Rx Freq	Rx Tone	Tx Freq	Tx Tone	Notes
SHA CMD	1	COMMAND	154.4300	136.5	159.0150	123.0 (T2)	(T2) BASS MTN
VTAC13	14	TACTICAL	158.7375	156.7 (T6)	158.7375	156.7 (T6)	
CALCORD	15	MEDICAL	156.0750	156.7 (T6)	156.0750	156.7 (T6)	MEDICAL
A-G CDF T17	6	A-G	159.3150	192.8	159.3150	192.8	A-G CDF TAC 17
GUARD	16	EMERGENCY	168.6250	0	168.6250	110.9	EMERGENCY USE ONLY
9. Prepared by: Name: B.J. Corey		Pos/Title: RESL		Signature:			
ICS 204		Date/Time: 8/16/2018		2216 hrs			

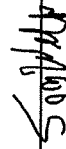
ICS 205 - INCIDENT RADIO COMMUNICATIONS PLAN

CONTROLLED UNCLASSIFIED
INFORMATION//BASIC

1. Incident Name: <p style="text-align: center;">Carr</p> Branches II, III, and Supp Repair	2. Date/Time Prepared Date: 08/16/2018 Time: 1830	3. Operational Period: Date From: 08/17/18 Date To: 08/18/18 Time From: 0700 Time To: 0700
---	--	---

4. Communications								
Ch#	Function	Name	Assigned To	Rx Freq	Rx Tone	Tx Freq	Tx Tone	Notes
1	COMMAND	SHA CMD	ALL DIVISIONS	154.4300	136.5	159.0150	123.0 (T2)	(T2) BASS MTN
2	COMMAND	SHA CMD T4	ALL DIVISIONS	154.4300	136.5	159.0150	136.5 (T4)	(T4) INSKIP MTN
3	COMMAND	SHA CMD T14	ALL DIVISIONS	154.4300	136.5	159.0150	151.4 (T14)	(T14) HOADLEY MTN
4	COMMAND	SHA CMD T15	ALL DIVISIONS	154.4300	136.5	159.0150	162.2 (T15)	(T15) SUGARLOAF MTN
5	COMMAND	SHA CMD T9	ALL DIVISIONS	154.4300	136.5	159.0150	100.0 (T9)	(T9) BULLY CHOOP MTN
6	A-G	A/G CDF T17	ALL DIVISIONS	159.3150	192.8	159.3150	192.8	A-G CDF TAC 17
7	TACTICAL	CDF T26	DIV I / M	159.2925	192.8 (T16)	159.2925	192.8 (T16)	
8	TACTICAL	CDF T27	DIV D / F / H	159.3075	192.8 (T16)	159.3075	192.8 (T16)	
9	TACTICAL	CDF T28	FIRING GRP	151.1825	192.8 (T16)	151.1825	192.8 (T16)	
10	TACTICAL	CDF T29	UNASSIGNED	151.3475	192.8 (T16)	151.3475	192.8 (T16)	
11	TACTICAL	CDF T30	DIV B / C	151.3925	192.8 (T16)	151.3925	192.8 (T16)	
12	TACTICAL	VTAC11	UNASSIGNED	151.1375	156.7 (T6)	151.1375	156.7 (T6)	
13	TACTICAL	VTAC12	DIV A	154.4525	156.7 (T6)	154.4525	156.7 (T6)	
14	TACTICAL	VTAC13	SUP. REPAIR	158.7375	156.7 (T6)	158.7375	156.7 (T6)	
15	MEDICAL	CALCORD	ALL DIVISIONS	156.0750	156.7 (T6)	156.0750	156.7 (T6)	MEDICAL
16	EMERGENCY	GUARD	ALL DIVISIONS	168.6250		168.6250	110.9	EMERGENCY USE ONLY
17								
18								
19								
20	EMERGENCY	GUARD	ALL DIVISIONS	168.6250		168.6250	110.9	EMERGENCY USE ONLY

5. Special Instructions

6. Prepared by (Communications Unit Leader): Name: Tom Webb
 Signature: 
 Date/Time: 08/16/18 1830

ICS 205 - INCIDENT RADIO COMMUNICATIONS PLAN

1. Incident Name: Carr SHU/SHF IA

2. Date/Time Prepared Date: 08/16/2018 Time: 1830

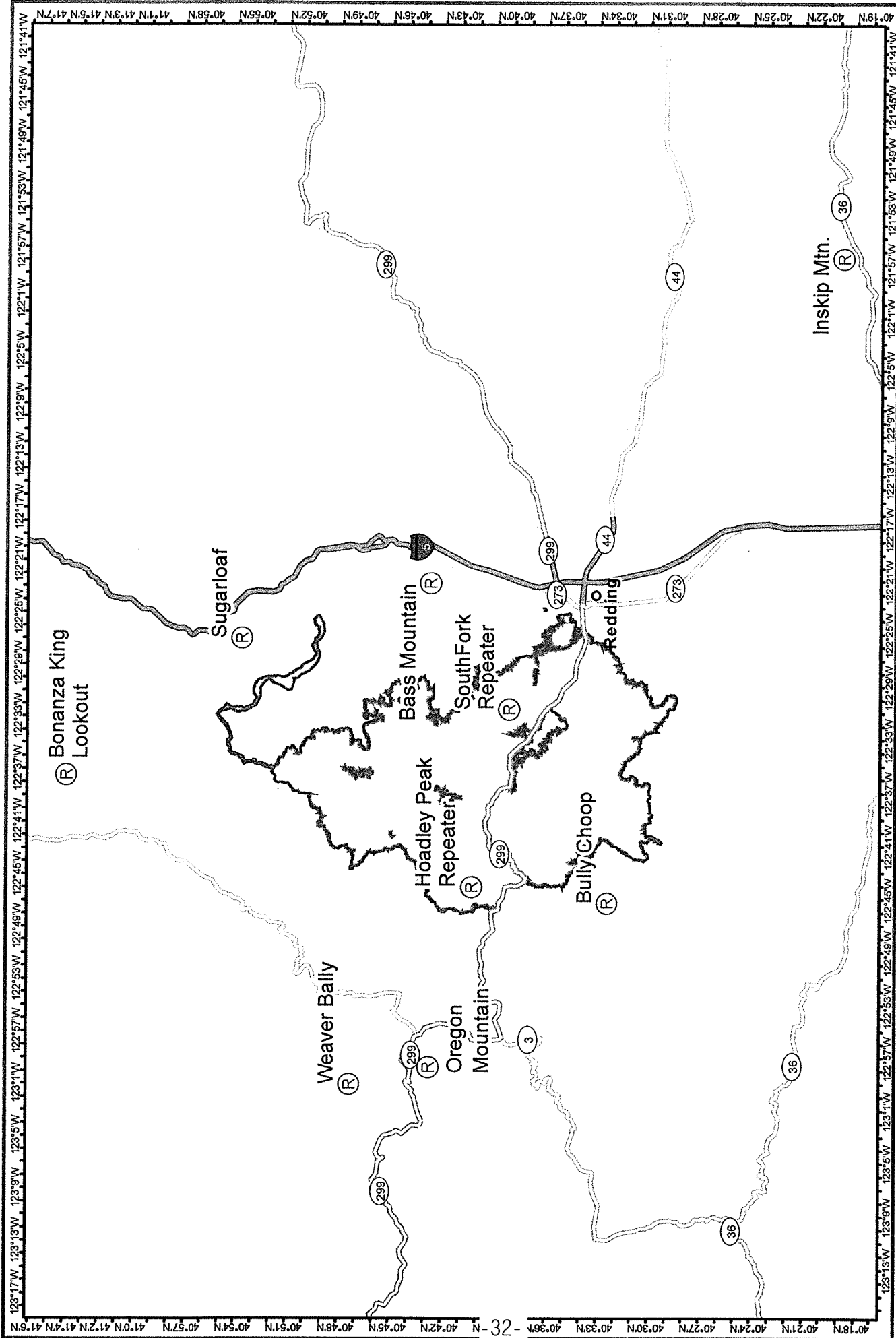
3. Operational Period: Date From: 08/17/18 Date To: 08/18/18
Time From: 0700 Time To: 0700

4. Communications

Ch#	Function	Name	Assigned To	Rx Freq	Rx Tone	Tx Freq	Tx Tone	Notes
1	SHU L	SHU L T1	CALFIRE SHU	151.1600	136.5	159.2700	110.9	(T1) BUNCHGRASS
2	SHU L	SHU L T2	CALFIRE SHU	151.1600	136.5	159.2700	123.0	(T2) SOUTH FORK
3	SHU L	SHU L T3	CALFIRE SHU	151.1600	136.5	159.2700	131.8	(T3) HOADLEY
4	SHU L	SHU L T4	CALFIRE SHU	151.1600	136.5	159.2700	136.5	(T4) LATOUR
5	SHF	SHF T1	SHF	171.5750	0	165.0125	110.9	(T1) BONANZA KING
6	SHF	SHF T7	SHF	171.5750	0	165.0125	167.9	(T7) BULLY CHOOP
7	SHF	SHF T10	SHF	171.5750	0	165.0125	107.2	(T10) SUGAR LOAF
8	RDN F-1	RDN F1	REDDING CITY	154.3250	0	153.7700	136.5	
9	RDN TAC 1	RDN T1	REDDING TAC	154.2050	0	154.2050	0	
10	TACTICAL	CDF A/G 2	AIR TO GRND	159.2625	192.8 (T16)	159.2625	192.8 (T16)	
11	TACTICAL	CDF T9	TAC	151.3850	192.8 (T16)	151.3850	192.8 (T16)	
12	TACTICAL	CDF T1	TAC	151.2575	192.8 (T16)	151.2575	192.8 (T16)	
13	TACTICAL	CDF T11	TAC	151.4450	192.8 (T16)	151.4450	192.8 (T16)	EMERGENCY USE ONLY
14	TACTICAL	CDF T12	TAC	151.4600	192.8 (T16)	151.4600	192.8 (T16)	
15	MEDICAL	CALCORD	MEDICAL	156.0750	156.7 (T6)	156.0750	156.7 (T6)	
16	EMERGENCY	GUARD	EMERGENCY	168.6250	0	168.6250	110.9	
17								
18								
19								
20	EMERGENCY	GUARD	EMERGENCY	168.6250	0	168.6250	110.9	

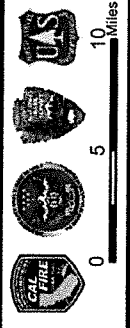
5. Special Instructions

6. Prepared by (Communications Unit Leader): Name: Tom Webb
Signature: 
Date/Time: 08/16/18 1830



- Camp
- ▲ Incident Command Post
- Drop Point

NAD83 1:525,000



0 5 10 Miles

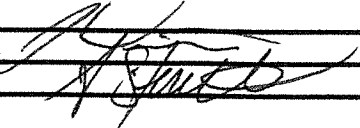
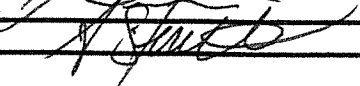
Communication Map

Carr Fire

CA-SHU-007808

Carr Fire
CA-SHU-007808
COMMS

MEDICAL PLAN (ICS 206)

1. Incident Name: CARR INCIDENT		2. Operational Period: Date From: 08/17/2018 Time From: 07:00		Date To: 08/18/2018 Time To: 07:00			
3. Medical Aid Stations:		MEDICAL UNIT LEADER: (408) 710-7196		COMMUNICATIONS UNIT: (530) 949-6816			
Name	Location	Contact Number(s)/Frequency	Paramedics on Site?				
MERT	BASE CAMP (BY CDC SLEEPING AREA)	(530) 310-0716	RN & PA				
EXPEDITORS	ANDERSON FAIRGROUNDS (NEAR BRIEFING)	---	NONE				
FRONTLINE MEDICAL	RED BLUFF FAIRGROUNDS	(530) 604-8380	PARAMEDICS				
4. Transportation (indicate air or ground):							
Ambulance Service	Location	Contact Number(s)/Frequency	Level of Service				
AMR MEDIC 145 (GROUND)	DP 55	SHASTA COMMAND	ALS				
MERCY MEDIC 115 (GROUND)	LAKEHEAD	SHASTA COMMAND	ALS				
TRINITY MEDIC 8	FAIRVIEW MARINA, TRINITY COUNTY	SHASTA COMMAND	ALS				
REACH AIRSHIP 5	1524 East St. Redding	(877) 939-6300	RN				
PHI AIR MED	5900 Old Oregon Trail Redding	(800) 597-9571	RN				
CHP 14 & 16 (HOIST)	2651 Gold Street (Benton Airpark), Redding	(530) 225-2040	ALS / HOIST				
CALFIRE COPTER 101 (HOIST)	MOUNTAIN GATE HELIBASE	(530)680-4631	BLS DAY HOIST				
NATIONAL GUARD 841	REDDING MUNI HELIBASE	(805)540-0334	24 HOUR ALS HOIST				
5. Hospitals:							
Hospital Name	Address, Latitude & Longitude if Helipad	Contact Number(s)/ Frequency	Travel Time		Trauma Center	Burn Center	Helipad
			Air	Ground			
SHASTA REG MED CTR MED 2	1100 BUTTE ST, REDDING 40° 35.106'N, 122° 23.268'W	(530) 244-5400 468.025 Tx, 468.025 Rx PL 5	10 MIN	29 MIN	YES LEVEL: 3	NO	YES
MERCY MED CTR MED 4	2175 ROSALINE AVE, REDDING 40° 34.332'N, 122° 23.796'W	(530) 225-7201 468.075 Tx, 463.000 Rx PL 5	10 MIN	29 MIN	YES LEVEL: 2	NO	YES
UC DAVIS MED 8	2315 STOCKTON BLVD SACRAMENTO 38° 33.360'N, 121° 27.330'W	(916) 734-2011 446.525 Tx, 203.5 Rx	1.25 HOUR	3.5 HOUR	YES Level: 1	YES	YES
TRINITY HOSPITAL WEAVERVILLE	60 EASTER AVENUE WEAVERVILLE N40° 44.275' W122° 56.359'	(530)623-5541 x1	20 MIN	45 MIN	NO	NO	YES
6. Special Medical Emergency Procedures:			BASE CAMP EMERGENCY: CONTACT COMMUNICATIONS UNIT AT: (530) 949-6816 report patient complaint/condition and location. Medical Staff will respond to stabilize incident			<ul style="list-style-type: none"> • COMMUNICATIONS Unit contacts: <ol style="list-style-type: none"> 1. Operations 2. Medical 3. Safety 4. Logistics 	
LINE EMERGENCY: Crew Supervisor to contact Division Supervisor with patient complaint/condition, location, and resource needs. <ul style="list-style-type: none"> • Division Supervisor contacts and gives report on conditions, complaint/condition, and resource needs to: <ol style="list-style-type: none"> 1. Nearest Line FEMT/FEMP 2. Communications Unit • Emergency or Priority traffic received: Communication Unit will clear the command channel for emergency traffic only, for the duration of the MAJOR IWI • Communications Unit will make proper notifications • OPERATIONS can declare a MAJOR IWI based on the report on conditions from the division supervisor • Division Supervisor or designee will serve as point of contact (IWI SUPERVISOR) and run the emergency utilizing the <u>COMMAND CHANNEL</u> and <u>CALCORD</u> for the tac net during the IWI **ALL EMERGENCIES: Secure the area and identify witnesses for later investigation. Keep an accurate log of events** ***START 20 MINUTE TIMER IF IWI***							
7. Prepared by (Medical Unit Leader): Name: JESSE WINNEN			Signature: 				
8. Approved by (Safety Officer): ANTHONY STORNETTA			Signature: 				
ICS 206	IAP Page _____	Date/Time: 08/18/2018 1500					



STRUCTURE DEFENSE GUIDE

STRUCTURE TRIAGE DECISION PROCESS (S-FACTS)

SURVIVAL

- Initial Assessment: can you survive here? *If not, LEAVE NOW!*
- Is there a Safety Zone nearby? *If not, LEAVE NOW! (IRPG)*
- Do you have a viable Escape Route?
- What is the decision point at which you will leave based on fire behavior and rate of spread?
- Is there a Temporary Refuge Area (TRA) on site? *If not, LEAVE NOW!*
 - Preplanned area for immediate, temporary refuge
 - Use of fire shelter should not be necessary
 - Is there a viable Escape Route to the TRA or Safety Zone?
- Is "Prep and Go" tactic an option?
- Do you have communications with your supervisor and adjoining forces?
- If safety issues cannot be mitigated, **LEAVE NOW!**

FIRE ENVIRONMENT

- Can you survive based on current and expected fire behavior? *If not, LEAVE NOW!*
- Look up, Look Down, Look Around Indicators:
 - Fuels (characteristics, moisture, temperature)
 - What will the intensity of the fire be when it arrives?
 - How long will it take to consume the fuels?
 - Wind
 - Current speed/direction
 - Expect changing winds
 - Terrain
 - Are you in a chute, chimney, or saddle? *If yes, LEAVE NOW!*
 - Is wind in alignment with topography?
 - What is your position relative to topography?
 - Are you mid slope or on top of a ridge?
 - Atmospheric Stability
 - Fire Behavior (requires constant monitoring)
 - Spotting, crowning, sheeting, rate of spread?
 - Flame length and height?
- Other weather considerations:
 - What is the current relative humidity?
 - Is there an expected change?
 - Are thunderstorms forecasted?

ACCESS

- Is access compatible with time and distance factors necessary to utilize as an Escape Route to a Safety Zone?
 - Road surface adequate for speed necessary?
 - Adequate width?
 - Turnaround/turnouts?
 - Bridges within limits for fire apparatus?
 - Drainage ditches/culverts?
 - Steep grades?
 - Is there a safe place to spot appar. - 35 -

CONSTRUCTION/CLEARANCE

- Does the structure have adequate defensible space, based on topography, fuels, and current and expected fire behavior?
- Can defensible space problems be mitigated quickly?
- Will building materials and yard clutter compromise safety?
- Is the construction wood siding or shake shingle roof?
- Are there vent openings, open eaves, large glass windows facing fire front, decks with vegetation below?
 - Will ember intrusion through attic or foundation vents be a problem?
- What are the contents in the garage and outbuildings?
- Are there hazardous materials present?
- Are there propane tanks, fuel tanks, or power lines?
- Is there an adequate water supply nearby?
- Are additional resources needed to mitigate issues?
- Consider "Prep and Go" or "Prep and Defend" tactics

TIME CONSTRAINTS

- Is there time for an adequate size up of the structure defense problem?
- Is there time to mitigate safety concerns?
- Is there time and adequate resources to properly prepare and defend the structure?
- Is there time to escape, utilizing Escape Routes, to a Safety Zone? **If not, LEAVE NOW!**

STAY OR GO

- Tactical decision based on the S-FACTS
- Is it safe to stay? If no, utilize "Check and Go" tactic
- Is there time to prepare the structure for defense and what will the fire behavior be when the fire gets here?
- "Prep and Go" or "Fire Front Following" tactics should be used when it is not safe to "Prep and Defend"

STRUCTURE TRIAGE CATEGORIES

Not-Threatened

- Safety Zone nearby and TRA present at structure
- Construction features/defensible space make the structure unlikely to ignite
- Residents may/may not have evacuated

Threatened Defensible

- Safety Zone nearby and TRA present at structure
- Construction features/defensible space require structure defense tactics during fire front impact
- Residents may/may not have evacuated

Threatened non-Defensible

- Lack of adequate Safety Zone nearby
- Structure cannot be safely defended
- Residents must be evacuated

ENTRAPMENT AVOIDANCE

- Are you adhering to the **10 Standard Firefighting Orders?** (IRPG)
- Have you considered the **18 Situations that Shout Watch Out?**
- Have you considered the **Common Denominators of Fire Behavior on Tragedy Fires?** (IRPG)
- Are you maintaining **LCES?** (IRPG)
- Look Up, Look Down, Look Around (IRPG)
- Have Decision Points ("Trigger Points") been established?
- Conduct Risk Management (IRPG)
 - Situational Awareness – Hazard Assessment – Hazard Control – Decision Point – Evaluate

FIRING OPERATION CHECKLIST

Location: _____

Date: _____ Time: _____

Firing Supervisor _____

1. Personnel Briefing

- Objectives
- Conditions (fire environment)
- Resource assignments identified
 - Firing personnel
 - Holding forces
 - Lookouts
- Ignition plan/sequence
- Communication Plan
- Contingency Plan
- Safety issues

2. Go / No-Go

- All personnel briefed
- Weather forecast reviewed
- Resources in place
- Lookouts posted as needed
- Anchor and termination firing points identified
- Communications systems in place
- Fire behavior forecast reviewed
- Escape routes and safety zones established and made known
- Adjoining forces/Air Attack notified

3. Approval Prior To Firing

- Division Supervisor
- Branch Director
- Operations

4. Other Notifications

- Other: _____
- Other: _____

Attach Firing Operations Checklist to ICS-214



CARR FIRE

CA-SHU-007808

FINANCE MESSAGE

- Finance Section is located in Fusaro Building
 - Please come by the Time Unit and start your and update your FC-33
 - Vendors please drop off your agreements to the Time Unit
 - Shift Tickets need to be completed by line supervisor and turned in at the end of each shift.
 - All injuries need to be reported to the COMP / CLAIMS Unit
 - All property Damage must be reported and documented
 - Please report any Vehicle Damage this includes Rental Vehicles
 - Local Government please check in with OES
 - Federal Time: Timekeeper on site.
 - **OFF-SITE FEEDING IS NOT APPROVED**
 - Water usage report needs to be turned in daily to the COMP / CLAIMS Unit
-
- **This fire is under Cost Apportionment**
 - **All DIVS, OPBD, STAM need to debrief with the Cost Apportionment Team Daily**
 - Cost Apportionment is located in the trailer directly across from Fusaro Hall

INCIDENT BILLING INFORMATION

CAL FIRE – SHASTA / TRINITY UNIT

875 CYPRESS AVE.
Redding Ca. 96001

Index Code: 2400

E-fund Billing Code: 013860

Federal P Code: 38-9PL1A6 (1502) [P]

SHIFT TICKET EXAMPLE

EMERGENCY SHIFT TICKET and EVALUATION FORM					Contractor Name		
Incident or Project Name LILAC INC		Incident Number CAMVU024612	Request Number E#		DOZER DUDE		
Agreement Number XXX - 000000 - 00					Operator #1 BOB SMITH		
Equipment Make CAT					Operator #2 TOM SMITH		
Equipment Model / Type D6XM			Operator Furnished By: <input checked="" type="checkbox"/> Contractor <input type="checkbox"/> Government				
Serial Number FULL VIN#			Licence Number 1234567				
Equipment Use (Circle) Hours Days / Miles			Operating Supplies Furnished By: <input checked="" type="checkbox"/> Contractor <input type="checkbox"/> Government				
Date Mo / Day			Equipment Status <input checked="" type="checkbox"/> Inspected <input checked="" type="checkbox"/> Under Agreement				
Start			Released by Government				
Stop			Withdrawn by Contractor				
Work			Remarks/Comments **				
Assignment			2 OPERATORS				
12/8 0700 2400 17							
12/9 0001 0700 7							
Vendor Rating					Govt. Rep. Name and Position - PRINT		
Poor* Avg. Good Exc. N/A					Mike Weber		
Met Performance Expectations					Govt. Rep. Signature		
Equipment in Safe Working Condition					<i>Mike Weber</i>		
Operator Skill Level					Contractor Signature		
Operates Safely					<i>Bob Smith</i>		
Operator's Cooperation Level					Date		
Overall Performance					Time		
					08/04/15 0800		
* NOTE: Any rating of POOR requires an explanation in Comment Section.					CALFIRE 297		
**Final evaluation or for more documentation, use an ICS Form 230 or equivalent.					(Rev 3-2011)		
Pink - Finance		Blue - Home Unit HE Coordinator		Yellow - Vendor		White - Govt Representative	

EMERGENCY SHIFT TICKET and EVALUATION FORM					Contractor Name		
The responsible Government Officer will complete this form each shift					DUDE TRANSPORT		
Incident or Project Name LILAC INC		Incident Number CAMVU 024612	Request Number E #		Operator #1 BOB SMITH		
Agreement Number XXX - 000000 - 00					Operator #2 TOM SMITH		
Equipment Make TRANSPORT/ KENWORTH			Operator Furnished By: <input checked="" type="checkbox"/> Contractor <input type="checkbox"/> Government				
Equipment Model / Type COZAD TRAILER /26 WHEELS			Operating Supplies Furnished By: <input checked="" type="checkbox"/> Contractor <input type="checkbox"/> Government				
Serial Number 1XP3ESMP14239012			Licence Number 9999999				
Equipment Use (Circle) Hours Days / Miles			Equipment Status <input checked="" type="checkbox"/> Inspected <input checked="" type="checkbox"/> Under Agreement				
Date Mo / Day			Released by Government				
Start			Withdrawn by Contractor				
Stop			Remarks/Comments **				
Work			2 OPERATORS				
Assignment							
12/8 0700 2400 17							
12/9 0001 0700 7							
Vendor Rating					Govt. Rep. Name and Position - PRINT		
Poor* Avg. Good Exc. N/A					Mike Weber		
Met Performance Expectations					Govt. Rep. Signature		
Equipment in Safe Working Condition					<i>Mike Weber</i>		
Operator Skill Level					Contractor Signature		
Operates Safely					<i>Bob Smith</i>		
Operator's Cooperation Level					Date		
Overall Performance					Time		
					08/04/15 0800		
* NOTE: Any rating of POOR requires an explanation in Comment Section.					CALFIRE 297		
**Final evaluation or for more documentation, use an ICS Form 230 or equivalent.					(Rev 3-2011)		
Pink - Finance		Blue - Home Unit HE Coordinator		Yellow - Vendor		White - Govt Representative	

Turn shift tickets to Finance.

SHIFT TICKET EXAMPLE

EMERGENCY SHIFT TICKET and EVALUATION FORM						Contractor Name H2O DUDE								
Incident or Project Name LILAC INC		Incident Number CAMVU 024612		Request Number E or S # Here		Operator #1 BOB SMITH		Operator #2						
Agreement Number XXX - 000000 - 00						Operator Furnished By: <input checked="" type="checkbox"/> Contractor <input type="checkbox"/> Government								
Equipment Make FREIGHTLINER			Equipment Model / Type WATER TENDER 2500+ TYPE 1			Operating Supplies Furnished By: <input checked="" type="checkbox"/> Contractor <input type="checkbox"/> Government								
Serial Number LAST 8 OF VIN#			Licence Number 55555555			Equipment Status <input checked="" type="checkbox"/> Inspected <input checked="" type="checkbox"/> Under Agreement								
Equipment Use (Circle) Hours Days / Miles						Released by Government Withdrawn by Contractor								
Date Mo / Day	Start	Stop	Work	Assignment										
12/8	0001	0700	7	OFF SHIFT										
12/8	0700	1900	12	BASE CAMP										
12/8	1900	2400	5	OFFSHIFT										
Vendor Rating						Govt. Rep. Name and Position - PRINT Mike Weber								
<table border="1"> <tr> <td>Poor*</td> <td>Avg.</td> <td>Good</td> <td>Exc.</td> <td>N/A</td> </tr> </table>						Poor*	Avg.	Good	Exc.	N/A	Govt. Rep. Signature Mike Weber			
Poor*	Avg.	Good	Exc.	N/A										
Met Performance Expectations						Contractor Signature Bob Smith								
Equipment in Safe Working Condition						Date 08/04/15								
Operator Skill Level						Time 0800								
Operates Safely						Remarks/Comments ** ONE OPERATOR								
Operator's Cooperation Level						<p>* NOTE: Any rating of POOR requires an explanation in Comment Section.</p> <p>**Final evaluation or for more documentation, use an ICS Form 230 or equivalent.</p>								
Overall Performance						CALFIRE 297 (Rev 3-2011)								
Pink - Finance		Blue - Home Unit HE Coordinator		Yellow - Vendor		White - Govt Representative								

EMERGENCY SHIFT TICKET and EVALUATION FORM						Contractor Name WATER GUY								
The responsible Government Officer will complete this form each shift						Operator #1 BOB SMITH		Operator #2 BILL SMITH						
Incident or Project Name LILAC INC		Incident Number CAMVU 024612		Request Number E OR S # Here		Operator Furnished By: <input checked="" type="checkbox"/> Contractor <input type="checkbox"/> Government								
Agreement Number XXX - 000000 - 00						Operating Supplies Furnished By: <input checked="" type="checkbox"/> Contractor <input type="checkbox"/> Government								
Equipment Make PETERBUILT			Equipment Model / Type WATER TENDER 2500 + TYPE 1			Equipment Status <input checked="" type="checkbox"/> Inspected <input checked="" type="checkbox"/> Under Agreement								
Serial Number LAST 8 OF VIN#			Licence Number 99999999			Released by Government Withdrawn by Contractor								
Equipment Use (Circle) Hours Days / Miles						Remarks/Comments ** 2 OPERATORS								
Date Mo / Day	Start	Stop	Work	Assignment										
12/8	0700	2400	17	DIV M										
12/9	0001	0700	7	DIV M										
Vendor Rating						Govt. Rep. Name and Position - PRINT Mike Weber								
<table border="1"> <tr> <td>Poor*</td> <td>Avg.</td> <td>Good</td> <td>Exc.</td> <td>N/A</td> </tr> </table>						Poor*	Avg.	Good	Exc.	N/A	Govt. Rep. Signature Mike Weber			
Poor*	Avg.	Good	Exc.	N/A										
Met Performance Expectations						Contractor Signature Bob Smith								
Equipment in Safe Working Condition						Date 08/04/15								
Operator Skill Level						Time 0800								
Operates Safely						Remarks/Comments ** 2 OPERATORS								
Operator's Cooperation Level						<p>* NOTE: Any rating of POOR requires an explanation in Comment Section.</p> <p>**Final evaluation or for more documentation, use an ICS Form 230 or equivalent.</p>								
Overall Performance						CALFIRE 297 (Rev 3-2011)								
Pink - Finance		Blue - Home Unit HE Coordinator		Yellow - Vendor		White - Govt Representative								

Turn shift tickets into Finance.



PUBLIC INFORMATION SECTION



Incident Information Line: (530) 225-2510
Incident Media Line: (530) 448-2466

Email Updates (sign up):
www.tinyurl.com/carrfire

STATUS	
Incident Start Date: 7/23/2018	Incident Start Time: 1:15 PM
Cause: Mechanical Failure of Vehicle	Acres:
Containment:	Total Personnel:

MEDIA – The California State Penal Code Section 409.5(d) allows the news media to enter scenes of disaster, riot or civil disturbance. Properly identified members of the news media should not be restricted from entering locations specified within the code. However, this does not include crime scenes, private property and does not imply that the news media may interfere with incident operations while they are in the areas of concern. More information can be found [here](#).



CAL FIRE SOCIAL MEDIA POLICY – When assigned to a CAL FIRE incident, you will adhere to the CAL FIRE Social Media Policy, Section 0691. You can find further information about the CAL FIRE Social Media Policy [here](#).



PHOTOGRAPHS AND VIDEOS OF INCIDENT – We are in a new era of media. Media no longer means news/broadcast industry, but now refers to anyone that has the capability to shoot video, photographs and post them onto social media sites in a matter of minutes. Unfortunately, we have seen some instances of photographs or videos that have depicted unsafe, unprofessional or embarrassing circumstances which are a serious breach of ethics. When this happens, it reflects poorly on all that are attached to this incident. Posting an inappropriate video, photo or blog comment could expose oneself to unwanted ramifications. It may be unsafe to shoot photos or video and a firefighter who is concentrating on a camera loses their situational awareness.

The Public Information Office would like copies of the video and pictures that you safely took while not in an emergency situation, fire suppression activity or in an overhead assignment. Bring your video and pictures to the Public Information trailer; they will be reviewed and possibly uploaded to our many CAL FIRE social media sites. Remember, we don't want photographs or videos that depict unsafe, unprofessional or embarrassing circumstances, which are a serious breach of ethics.

LOST AND FOUND – The Information Section will manage lost and found items for the incident. If you have lost an item please leave your contact information and what you have lost at the Information Section. If you have found an item on the incident, bring the item to the Information Section with your contact information as well.

MAIL SERVICE – The Information Section can assist you with sending and receiving mail. The address is Shasta District Fairgrounds 1890 Briggs St. Anderson CA. 96007

DEMOBILIZATION INSTRUCTIONS

CARR

CA-SHU-007808

DEMOB PROCEDURES

- CHECK THE DEMOB LIST EACH MORNING. YOU CAN FIND THE DEMOB LIST THROUGH THE “QR” CODE ON THE I.A.P. COVER OR ON LISTS POSTED THROUGHOUT CAMP. **ONLY REPORT TO DEMOB AT YOUR SCHEDULED TIME.** EARLY ADMITTANCE WILL NOT BE ALLOWED.
- **FLIGHT ARRANGEMENTS MUST BE MADE 48HRS PRIOR TO RELEASE.**
- REPORT TO DEMOB AT APPOINTMENT TIME TO RECEIVE A CHECKOUT FORM (ICS-221), THEN GO TO THE FOLLOWING UNITS TO OBTAIN THE NECESSARY SIGNATURES:
 - ✓ SUPPLY UNIT
 - ✓ COMMUNICATIONS UNIT
 - ✓ GROUND SUPPORT/VEHICLE INSPECTION***
 - ✓ DOCUMENTATION UNIT
 - ✓ TIME UNIT
 - ✓ TRAINING UNIT (IF APPLICABLE)
 - ✓ ACCOMMODATIONS (IF APPLICABLE)

***VEHICLE INSPECTION:

- THE DEMOB UNIT WILL INFORM YOU IF THE VEHICLE NEEDS TO BE INSPECTED.
- YOU MUST HAVE THE ICS-221 DEMOB FORM WITH YOU AT VEHICLE INSPECTION.
- A VEHICLE INSPECTION TIME WILL BE PROVIDED WHEN YOU INITIALLY ARRIVE TO THE DEMOBILIZATION UNIT.
- **DO NOT REPORT FOR VEHICLE INSPECTION PRIOR TO YOUR APPOINTMENT**

HAVE YOUR EQUIPMENT INVENTORY CARD READY WHEN HEADING TO VEHICLE INSPECTION.

RETURN THE COMPLETED ICS-221 FORM TO THE DEMOB UNIT AND TRAVEL HOME SAFE!





TRAINING

SPECIALIST MESSAGE

OFFICE LOCATION IS IN THE FUSARO BUILDING

TRAINEE'S: PLEASE CLOSE OUT YOUR TRAINING PACKAGE **PRIOR** TO STARTING DEMOB. WHEN YOU COME TO THE **TRAINING SPECIALIST** TO **CLOSE** A FILE, YOU MUST BRING THE FOLLOWING ITEMS:

- TRAINER (EVALUATOR)
- YOUR **INITIATED** POSITION TASK BOOK IN FOR REVIEW. THE PTB MUST BE COMPLETED BY THE TRAINER (EVALUATOR)
- COMPLETED EVALUATION RECORD
- COMPLETED INDIVIDUAL PERFORMANCE EVALUATION (ICS 225). Please be specific to documenting tasks in the narrative section. This would include tasks such as: developing hoselays, handline construction, structure defense, briefings, logistical support, speaking with aircraft.

TNSP – Dave Randolph (805) 857-4820

Peer Support Team Message:

CARR INCIDENT PEER SUPPORT: (916) 591-9004

The gravity of this event is large. Many of us have been impacted by the events that have occurred as well as past incidents.

A peer support team has been assembled and Peers are available at the ICP. The Peer Support contact number is (916)-591-9004, which is available 24/7.

Some of the signs and symptoms you may be experiencing include, but are not limited to:

Irritability, lack of sleep, quick to anger, withdrawal, above average tobacco use, an increase in negative coping mechanisms such as excessive alcohol and/or substance abuse. You might experience lack of appetite, isolate yourself, and various other unexplained responses to normal every day events.

You may not be experiencing these symptoms now or during this fire incident. However, you may find yourself experiencing them when you return to your home or unit. You may find yourself being triggered by a past event that has impacted you, while assigned to future incidents. A sight, sound, smell, or touch could trigger a memory that previously existed, but you may not have been aware of.

If you find yourself in this situation and need to talk to someone contact your Employee Assistance Program (EAP). EAP programs are here to help. It is important to be able to talk to someone and get stuff off your chest vs carrying this around for your career.

Transportation Map

Carr Incident
CA-SHU-007808



From ICP to Lakehead Camp
32 Miles North on I-5 FWY
Exit 702 Lakeshore Dr.
Right on Antler School Road

East Side of Fire from ICP
Left onto 273/Eureka Way for 4 miles

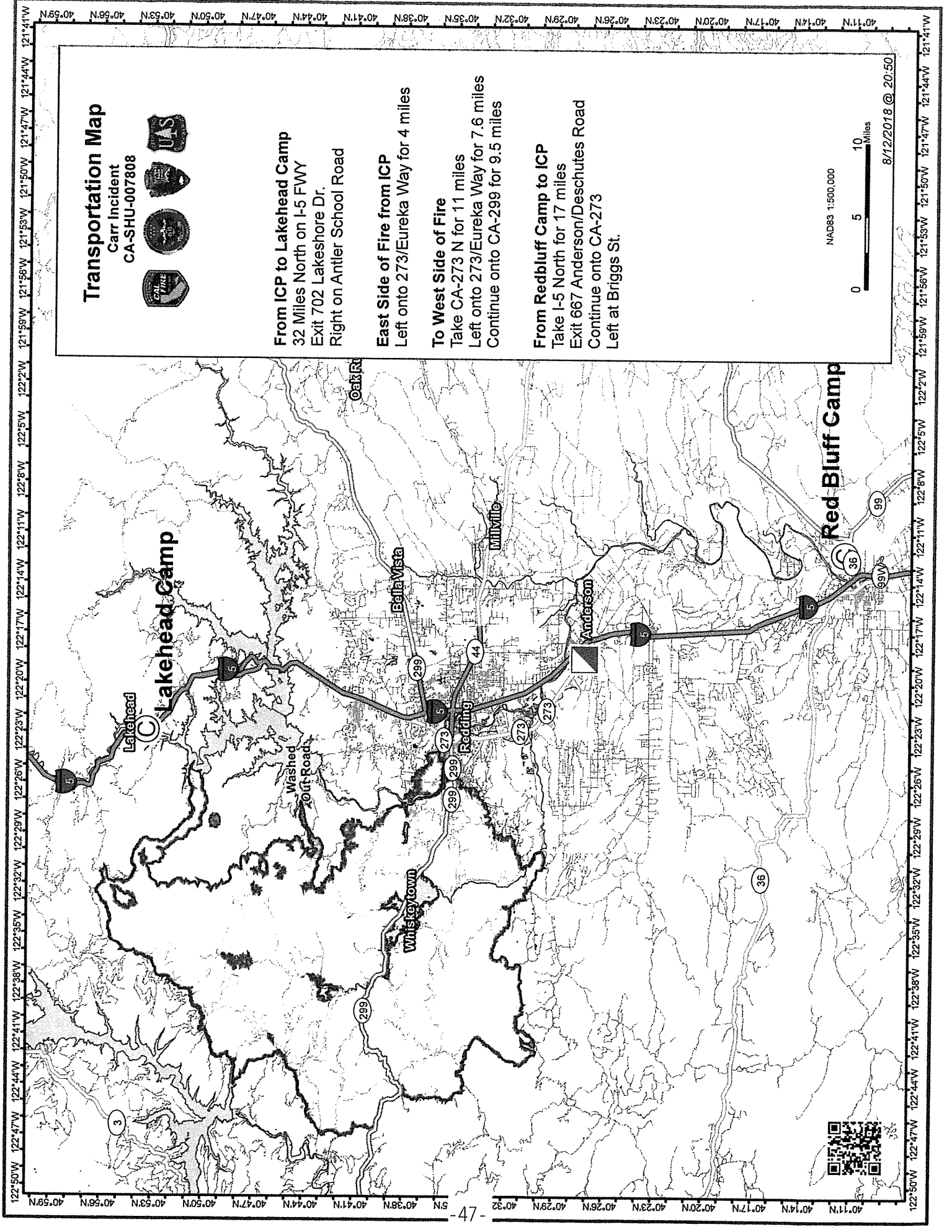
To West Side of Fire
Take CA-273 N for 11 miles
Left onto 273/Eureka Way for 7.6 miles
Continue onto CA-299 for 9.5 miles

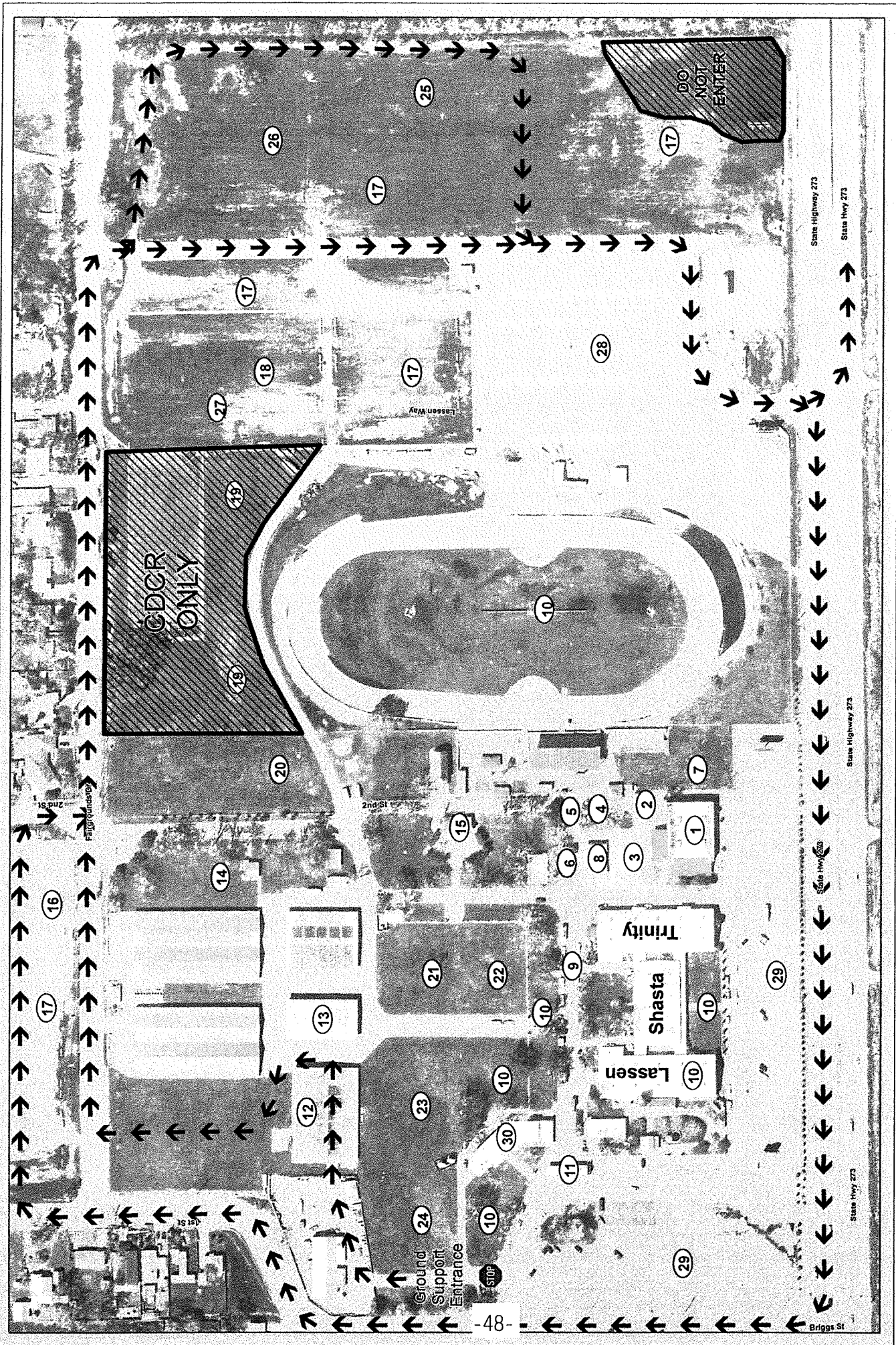
From Redbluff Camp to ICP
Take I-5 North for 17 miles
Exit 667 Anderson/Deschutes Road
Continue onto CA-273
Left at Briggs St.

NAD83 1:500,000



8/12/2018 @ 20:50





NAD 1983 2011 California State Abers

Facilities Map CARR INCIDENT CA-SHU-7808


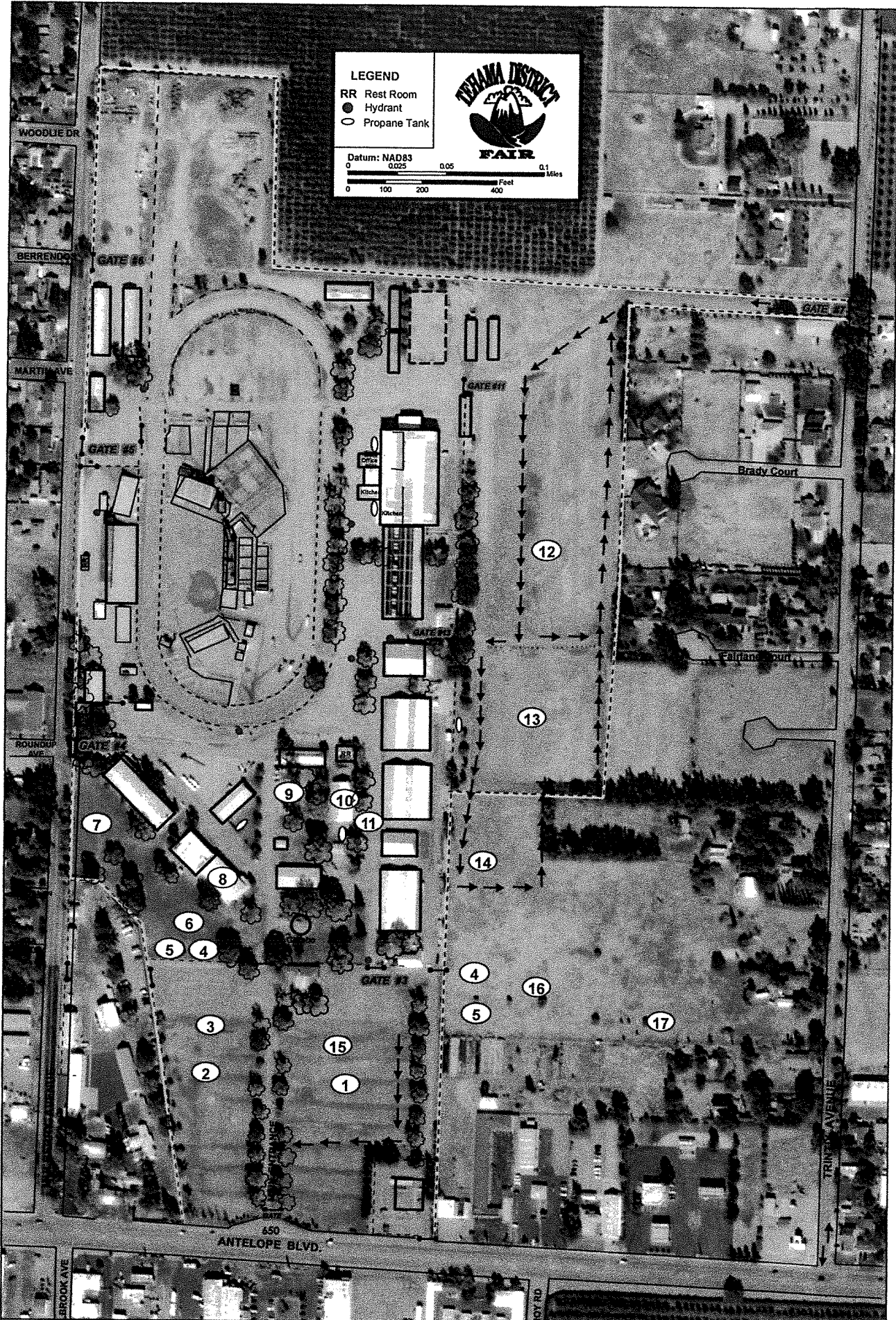
- 1. Check-in/Finance
- 2. Logistics-Facilities
- 3. Communications
- 4. Safety/OPS
- 5. Liaison
- 6. IC
- 7. GIS
- 8. Accommodations
- 9. OES
- 10. Crew Sleeping
- 11. PIO
- 12. Ground Support
- 13. Supply
- 14. Kitchen
- 15. Briefing
- 16. Lunches/Water/Ice
- 17. Engine Parking
- 18. CDCR Parking
- 19. CDCR
- 20. MERT
- 21. Laundry
- 22. Showers
- 23. Mobile Sleepers
- 24. CCC Sleeping
- 25. Fuel
- 26. Transport Parking
- 27. Weed Wash
- 28. Crew Parking
- 29. Overhead Parking
- 30. Rehab Lounge



LEGEND

- RR Rest Room
- Hydrant
- Propane Tank

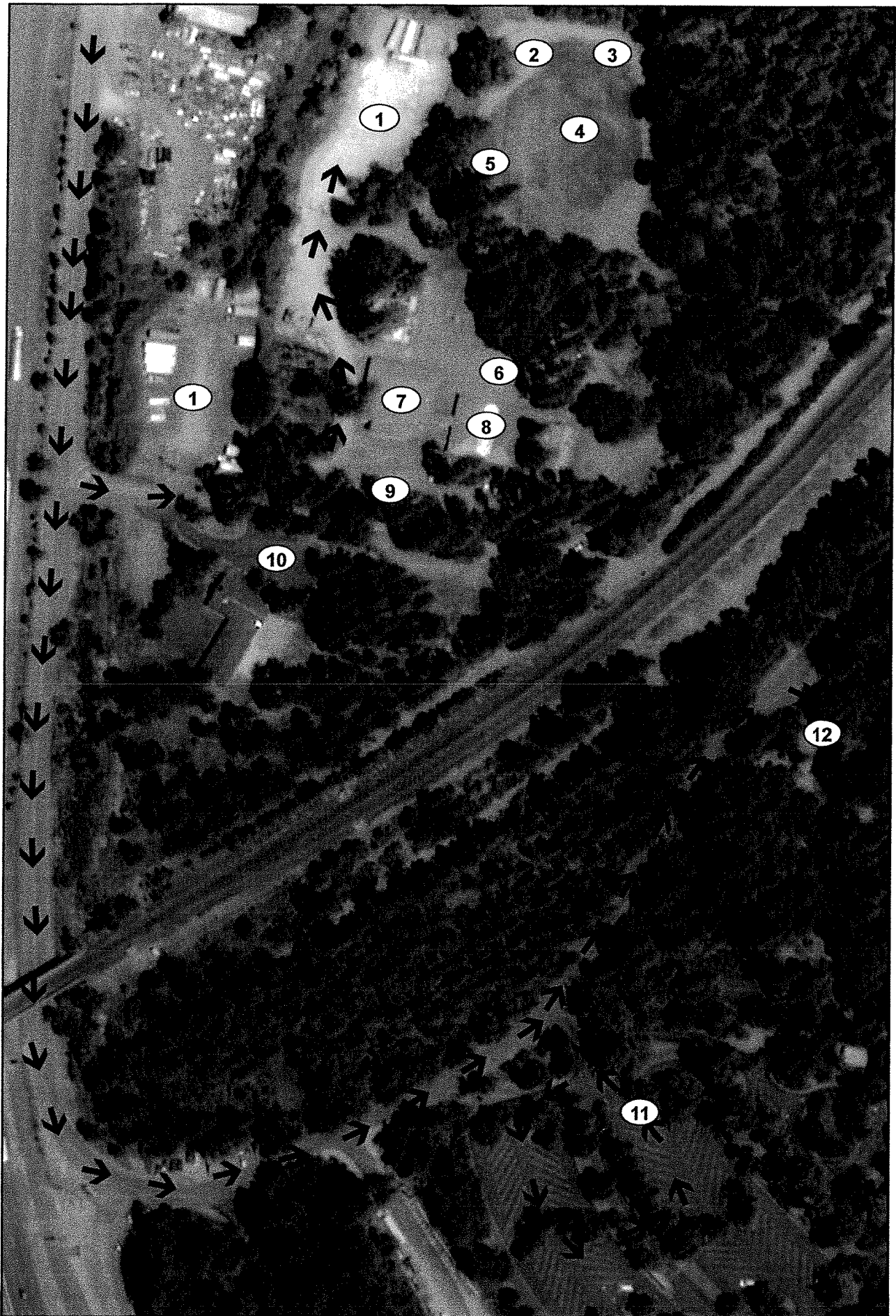
Datum: NAD83
0 0.05 0.1 Miles
0 100 200 400 Feet

- 1. Engine Fuel
 - 2. Engine Overhead Parking
 - 3. Ice/Water/Lunches
 - 4. Laundry
 - 5. Showers
 - 6. Tent W/AC Sleeping
 - 7. Personnel Tents
 - 8. LOGS
 - 9. Food
 - 10. Supply
 - 11. Medical
 - 12. National Guard Fuel
 - 13. National Guard Parking
 - 14. Kitchen
 - 15. Engine Parking
 - 16. Tents
 - 17. Smaller Trailers
- *Laundry/Showers Available to All

Facilities Map
 C-49-NCIDENT
 -49-HU-7808





- | | | |
|-------------|----------------|------------------------|
| 1. Parking | 5. Facilities | 9. Lunch/Ice/Water |
| 2. Laundry | 6. Kitchen | 10. Additional Parking |
| 3. Showers | 7. Dining Hall | 11. Fuel |
| 4. Sleeping | 8. Supply | 12. Tent Sleeping |

Facilities Map
Lakehead Camp
CARR INCIDENT
CA-SHU-7808





CARR INCIDENT LOGISTICS MESSAGE



SERVICES SCHEDULE

Breakfast:	0500-1000
Dinner:	1700-2200
Sack Lunch Distribution:	0500-2100
Laundry Service:	0500-2300
Supply:	0600-2200
Saw Shop:	0600-2200
Showers:	0600-2300
Fuel:	24hr Service

FUEL TRUCK LOCATIONS

Interstate Oil:	Incident Base
Cross Petroleum:	Incident Base
Mean Gene Gas:	Red Bluff
SST Oil Truck #2:	French Gulch, DP 30
Ed Staubs and Son:	Lakehead, DP 31

REFRIDGERATION TRUCKS and HYDRATION STATIONS (ICE, WATER and GATORADE)

- DP 30, French Gulch
- DP 31, Lakehead

**THIS PAGE
INTENTIONALLY
LEFT BLANK**

