

Carr

INCIDENT

#CA-SHU-007808

INCIDENT ACTION PLAN



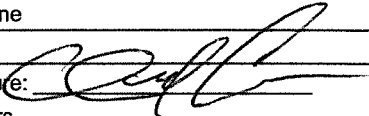
OPERATIONAL PERIOD

8/20/2018

to

8/21/2018

ORGANIZATION ASSIGNMENT LIST (ICS 203)

1. Incident Name: Carr		2. Operational Period: Date From: 8/20/2018 Time From: 0700		Date To: 8/21/2018 Time To: 0700	
3. Incident Commander(s) and Command Staff:			7. Operation Section:		
IC/UC's	B.Gouvea/ G. Bertelli (T)		Chief	T. Brownell	
Deputy	M. Van Loben Sels/ S.Spinharney (T)/ B. Newburn (T)		Deputy	S. Crawford/ M. Wink (T)	
Safety Officer	B. Carter/ A. Stornetta (T)		Night Ops	F. Berbena	
Information Officer	E. Smith/ B. Mercado (T)				
Liaison Officer	D. Schloss/ T.Crawford/ B.Smith (T)		Branch	I	E. Darnall (12 Hr)
			Division/Group	T/U/V/XY	L. Moore(12Hr)
			Division/Group		
4. Agency/Organization Representatives:			Branch	II	E. Darnall (12 Hr)
Agency	Name		Division/Group	A/B/C	J. Stone (9260C)
Shasta County SO	A.Bertain		Division/Group		
Cal OES AREP	P.Titus/ D. Franklin		Division/Group		
PG&E	M. Weaver		Branch	III	A. Latta
CDCR	M.Ahlin		Division/Group	D/F/H	D. Privett (9251C)
CCC	K. McDonald/ S. Borowski		Division/Group	I/M	A. Hernandez (9244C)
BLM	J. Mata		Division/Group		
NPS	C. Letz		Division/Group		
			Branch	IV	J. Campbell (12 Hr)
			Division/Group	N/O	B. Fabbri (12Hr)
			Division/Group		
			Division/Group		
			Branch	V	J. Campbell (12 Hr)
			Division/Group	P/S	S. Hawkins (9210C)
5. Planning Section:			Division/Group		
Chief	M. Petro		Branch	Supp Repair	B. Rowe (12Hr)
Deputy	C. Carrera		Division/Group	Lakehead Group	E. Cordtz (12Hr)
Resource Unit	Carlos/Tucker/Corey/Reneau		Division/Group	Shasta Group	S. Larsen (12Hr)
Situation Unit	R. DeCamp/ E. Scovel/ J. Henderson		Division/Group	Trinity Group	B. Rodgers (12Hr)
Documentation Unit	J.Patterson		Division/Group	Ono Group	D. Dresselhaus (12Hr)
Demobilization Unit	T. Shevenell/ A. Klem		Division/Group	Buckhorn Group	J. Washburn (12Hr)
GISS	T. Werle/ E. Tumbleson (T)		Division/Group	Baer Group	D. Havlina (12Hr)
FBAN	D.Boursier		Division/Group		
IMET	R. Walbrun		Branch		
Training Tech Spec	D. Randolph/ J. Heald (T)		Division/Group		
Hired Equipment Tech	D. Grandbois		Division/Group		
6. Logistics Section			Air Operations Branch		Director: T. Stepanovich
Chief	J. Morris			Air Support Grp Sup	M.Hill/ T. Smith (T)
Deputy	C. White			Helibase Manager	G. Bell (T)
Supply Unit	L. Srory/ M. Brabo (T)				
Facilities Unit	J. Guerra/ B. Little (T)		8. Finance/Administration Section:		
Ground Support Unit	P. Mock/ J. Wilson		Chief	J. Franklin	
Communications Unit	T. Webb		Deputy	B. Counts	
Medical Unit	J. Winnen		Time Unit	S.Thompson	
Motel Tech Spec	M. Aldrich/ S. Vaquero		Procurement Unit	C. Craig/ T. Meyers	
Ordering Manager	A. Gettman/ J. Tompkins		Comp/Claims Unit	M. Boone	
Food Unit	M. Mondragon		Cost Unit	S. Cain	
Prepared By: Name:	Chris Carrera	Position/Title:	PSC	Signature:	
ICS 203		Date/Time:	8/19/2018 2216 hrs		



Fire Weather Forecast

FORECAST NO: 26
PREDICTION FOR: DAY/NIGHT SHIFT
SHIFT DATE: August 20, 2018
TIME/DATE ISSUED: August 19, 2018 1900 PDT

NAME OF FIRE: Carr
UNIT: CA-SHU
SIGNED: Ryan Walbrun
Incident Meteorologist

WEATHER DISCUSSION: The pattern will turn more seasonable today as a weather system lingers over Oregon. There will be some north winds this morning but they should subside by about 1000 hours. The incoming weather system will bring subtle cooling and slightly higher humidity today. Winds this afternoon will switch southerly once again but should remain light most divisions. The inversion will be a little weaker but with less fire on the ground we are not expecting the inversion to break. Humidity recovery will be better tonight as slightly cooler and more moist air settles over Northern California.

WEATHER FORECAST FOR MONDAY:

WEATHER: Smoke. Continued warm and dry. Southerly winds developing after 1400 hours.

MAX TEMPERATURES: 85 smokey areas above 3000 ft to 95°F below 1000 ft. 2-4 degrees cooler.

MIN HUMIDITY: 15-22%. Trend of 2-4% wetter.

20-FOOT WIND:

VALLEY - Downslope/downvalley 2-5 mph early becoming upslope/upvalley 3-5 mph with gusts to 10 mph after 1400.

MIDSLOPES/RIDGETOP- Northerly winds 4-8 gust 12 mph before 1000 becoming South 5-8 gusts 12-14 mph after 1400.

HAINES INDEX: 3 **LAL:** 1 **INVERSION:** Moderate inversion slowly lifting after 1400

MONDAY NIGHT:

WEATHER: Smoke settling over the fire area and ICP. Otherwise clear with moderate to good RH recovery.

MIN TEMPERATURES: 59-67°F. 2-4 degrees cooler.

MAX HUMIDITY: 50-65% Trend of 10-15% wetter

20-FOOT WIND:

SLOPE/VALLEY - Downslope/downvalley 2-5 mph after 2200. Then North 2-5 mph overnight.

RIDGETOP - Southwest 4-8 gust 12 mph through sunset. Turning Northerly 3-6 gust 8-10 mph late.

EXTENDED FORECAST:

TUESDAY THROUGH FRIDAY: A more seasonable weather pattern is forecast to develop this week with a weak trough of low pressure over Oregon. This will translate to seasonable daytime highs from the mid 80s higher elevations to mid 90s lower elevations. Afternoon humidity will lower 18-28% with good night time recovery around 50-60%. Winds look to remain fairly light and diurnally driven with afternoon southerly winds turning light northerly drainage at night. Haines indices of 3 anticipated.

SAFETY MESSAGE: Continue to take weather observations and monitor trends in humidity or signs of a breaking inversion. Even as temperatures cool hydration will be key for being ready for your next assignment. A Fire and Fuels Behavior Advisory remains in effect across all of North Ops. Know your expected weather for initial attack or new incidents and given the current fuels plan for rapid rates of spread, even at night.

FIRE BEHAVIOR FORECAST

FORECAST NUMBER: 26	TYPE OF FIRE: Wildland Fire
FIRE NAME: CARR	OPERATIONAL PERIOD: 24hr 8/20 (0700-0700)
DATE ISSUED: 08/19	TIME ISSUED: 2100
UNIT: SHU	SIGNED: D. Boursier FBAN/LTAN

INPUTS

WEATHER SUMMARY

****Returning to Seasonal Norms****
See Weather Forecast in IAP.

OUTPUTS

GENERAL: Fuels and topography driven activity.

Hazards throughout the fire area include: interior green islands and slopes, ash pits, fire weakened trees, dust devils, and roll-out.

New starts will see rapid growth and establishment. Smoke columns will contribute to long range spotting.

In the absence of weather conditions outside the forecast or extreme fire behavior conditions expect:

	Max. Flame Length	Max. Rate of Spread	Spotting	Probability of Ignition
Grass	< 5' (1.5m)	40 ch/hr (1.2 km/hr)	< ½ mile (.8 km)	89%
Grass/Shrub Mix	< 5' (1.5m)	20 ch/hr (.6 km/hr)	< ½ mile (.8 km)	89%
Timber Understory	< 8' (2.5m)	10 ch/hr (.2 km/hr)	< ½ mile (1.2 km)	89%
Timber Litter	< 4' (1m)	5 ch/hr (.1 km/hr)	< ¼ mile (.4 km)	89%

****minimum safety zone size for brush fuels is ¼ acre (.3 Ha) for a Strike Team of Engines.**

SPECIFIC:

Branch I, II & III

Interior smoldering activity. Interior islands and green slopes with wind exposure alignment may see activity. Expect most activity to occur as afternoon winds increase and smoke clears. Roll-out and spotting potential across established lines. Keep alert to unburned islands, fire weakened trees, ash pits, and dust devils.

Branch IV and V

Significant smoke coverage will temper fire behavior. Keep alert to unanticipated smoke clearing that will see increase in fires' activity. Predominately surface fire spread. Expect areas with understory preheating via slash piles, fuel jackpots or topography to possibly transition into canopy. Interior Torching and short crown runs possible. Look for areas of fuels treatment, timber harvest or previous fire activity for safety or control objectives. Roll-out and spotting potential across established lines.

AIR OPERATIONS:

Most of fire area should remain smoked in for majority of burn period. Break in inversion not anticipated. Mixing height: 8,000 ft. AGL, Transport winds: SW 5-10 mph, Sunrise 0625, Sunset 2003.

SAFETY

For new starts, light flashy 1-hour fuels are the primary carrier of fire.
Rapid action is paramount before establishment in heavier fuels.

SAFETY MESSAGE/PLAN (ICS 208)

INCIDENT NAME:
CARR FIRE CA-SHU-007808

Operational Period: Date From: 8/20/18 Date to: 8/21/18
Time From: 0700 Time to: 0700

“Success can lead to complacency, and complacency is the greatest enemy of success”.

MAJOR HAZARDS AND RISKS

Driving

Drive defensively!!! Steep, narrow, dusty roads throughout fire area. Maintain safe following distances and appropriate speed when traversing roads. Roads are being heavily impacted by fire suppression, recovery, and the repopulation. Work with Division Supervisors to mark intersections, dead end roads, and speed limitations. Communicate on tactical channels when driving on one lane roads.

SNAGS

HAZARD TREE INDICATORS: Trees have been burning for an extended period of time. High risk tree species (rot and shallow root systems that continue to burn). Numerous down trees. Dead or broken tops and limbs overhead. Accumulation of down limbs. Absence of needles, bark or limbs. Leaning or hung-up trees. Water or retardant drops in the area have broken or weakened limbs in the canopy.

Fatigue/Complacency

Stay alert and engaged to maintain situational awareness. Focus on process instead of outcome. Continuously learn and adapt to new challenges. Recognize your blind spots and look for vulnerabilities. Be alert for signs of fatigue and take breaks as necessary.

Hydration/Nutrition

Drink plenty of fluids throughout the day and eat accordingly. Balance electrolyte drinks at a 3:1 water to sport drink ratio. Address dehydration concerns immediately upon symptom onset. Keep up on personal hygiene. After strenuous work, continue drinking to replace fluid losses.

Communications

Confirm all personnel have latest clone, test prior to going to line. Utilize human repeaters as necessary. Use proper terminology. Avoid using squirrel channels.

Accountability

Be responsible for your personal and resource accountability. Maintain proper communications with your forces, your supervisor and adjoining forces. Give clear instructions and ensure they are understood. Make sure Safety Zones are known for work areas.

Demob

Complete comprehensive walk arounds of vehicle prior to leaving and periodically during travel.

Prepared By: Anthony Stornetta Position/Title: SOF1(T)

Signature: 

LINE EMERGENCY REPORTING PROCEDURES

- Declare a "LINE EMERGENCY" on the COMMAND CHANNEL.
- Identify:
 - TYPE _____
 - SEVERITY _____
 - POINT OF CONTACT _____
- Identify resource needs, i.e., ambulance, hoist, REMS, Law Enforcement, etc.
- Provide COMMUNITIONS the following information:
 - CHIEF COMPLAINT: _____
 - LOCATION OF PATIENT: _____
 - TRANSPORTATION REQUEST BY: AIR ___ GROUND ___
 - DIVISION _____ CREW _____
 - POINT OF PICKUP _____
 - LAT _____ LONG _____
 - IS EMT WITH THE PATIENT: YES ___ NO ___
 - AGE _____
 - SEX: MALE ___ FEMALE _____

****ALL EMERGENCIES: Secure the area and identify witnesses for later investigation. Keep an accurate log of events****

ASSIGNMENT LIST (ICS 204)

1. Incident Name: Carr		2. Operational Period: Date From: 08/20/18 Date To: 08/21/18 Time From: 0700 Time To: 0700			3. Branch: III Div/Group: D/F/H Delta		
4. Operations Personnel: Operations Section Chief: T. Brownell Night Ops: F. Berbena Branch Director: A. Latta Branch Safety: D. Glenn Division/Group Supervisor: D. Privett (9251C) (12Hr)/ T. Becerra (12Hr)							
5. Resources Assigned:		** Resources Below in Bold are 12 Hour **			Reporting Location, Special Equipment, Remarks, Notes, and Information Time Location		
Resource Identifier	ALS	Leader	Personnel	Request #			
STC TGU 9251C		Magana, Gerry	17	E-1	0700-0700	DP 55 / 52	
T/F TX TF 4		Brinkkoeter, Darren	18	E-1226	0700-1900	DP 55 / 52	
T/F CARR #20		D.Brady/M.Lilienthal	20		0700-1900	DP 55 / 52	
ENG T6 R08 8		Anderson, Larry	3	E-821	0700-1900	DP 55 / 52	
STG TGU 9255G		Smith, Phillip	33	C-45	0700-0700	DP 55 / 52	
CRW CNF DESCANSO CREW 5		Healy, Patrick	21	C-200014	0700-1900	DP 55 / 52	
W/T PVT E-134		Anderson, Sandra	1	E-134	0700-1900	DP 55 / 52	
W/T PVT E-642		Kelly, Tom	1	E-642	0700-1900	DP 55 / 52	
W/T PVT E-1157		Anderson, Michelle	2	E-1157	0700-0700	DP 55 / 52	
FALM O-669		Garwood, Lance	2	O-669	0700-1900	DP 55 / 52	
FALM O-850		Davant, Travis	2	O-850	0700-1900	DP 55 / 52	
FEMP GREEN O-954	ALS	Green, Randolph J	1	O-954	0700-0700	DP 55 / 52	
FEMP MILLER O-995	ALS	Miller, Joshua David	1	O-995	0700-0700	DP 55 / 52	
REMS XSCC REMS 4		Perez, George	4	O-802	0700-0700	DP 55 / 52	
6. Work Assignments: Pull hose lays. Backhaul garbage, hose, and water. Patrol.							
7. Special Instructions: Identify for backhaul any hose and equipment in the fire perimeter. Trinity Dam access road combo is 7808 on each side. FEMPs and REMS are a Branch III resource.							
8. Communications (radio and/or phone contact numbers needed for this assignment):							
Name	Ch	Function	Rx Freq	Rx Tone	Tx Freq	Tx Tone	Notes
SHA CMD	1	COMMAND	154.4300	136.5	159.0150	123.0 (T2)	(T2) BASS MTN
CDF T27	8	TACTICAL	159.3075	192.8 (T16)	159.3075	192.8 (T16)	
CALCORD	15	MEDICAL	156.0750	156.7 (T6)	156.0750	156.7 (T6)	MEDICAL
A-G CDF T17	6	A-G	159.3150	192.8	159.3150	192.8	A-G CDF TAC 17
GUARD	16	EMERGENCY	168.6250	0	168.6250	110.9	EMERGENCY USE ONLY
9. Prepared by: Name: B.J. Corey		Pos/Title: RESL		Signature:			
ICS 204		Date/Time: 8/19/2018 2216 hrs					

ASSIGNMENT LIST (ICS 204)

1. Incident Name: Carr		2. Operational Period: Date From: 08/20/18 Date To: 08/21/18 Time From: 0700 Time To: 0700			3. Branch: Supp Repair Div/Group: Trinity Group		
4. Operations Personnel: Operations Section Chief: T. Brownell Night Ops: F. Berbena Branch Director: B. Rowe (12Hr) Division/Group Supervisor: B. Rodgers (12Hr)					Page 1 of 2		
5. Resources Assigned:		** Resources Below in Bold are 12 Hour **			Reporting Location, Special Equipment, Remarks, Notes, and Information Time Location		
Resource Identifier	ALS	Leader	Personnel	Request #			
DOZ PVT E-51		Cattaneo, Angelo	1	E-51	0700-1900	DP 37	
DOZ PVT E-52		Cattaneo, Angelo	1	E-52	0700-1900	DP 37	
DOZ PVT E-88		Obrien, Mike	1	E-88	0700-1900	DP 37	
DOZ PVT E-341		Carter, Kevin	1	E-341	0700-1900	DP 37	
DOZ PVT E-343		Wolfe, Larry	1	E-343	0700-1900	DP 37	
DOZ PVT E-407		Ingram, Brad	1	E-407	0700-1900	DP 37	
DOZ PVT E-419		Waterman, Tim	1	E-419	0700-1900	DP 37	
DOZ PVT E-755		Ray, Clant	1	E-755	0700-1900	DP 37	
DOZ PVT E-200006		Warner, Gary	1	E-200006	0700-1900	DP 37	
W/T PVT E-394		Troedel, Bryan	1	E-394	0700-1900	DP 37	
W/T PVT E-886		Newberry, Scott	1	E-886	0700-1900	DP 37	
W/T PVT E-1107		Hizey, Blake	1	E-1107	0700-1900	DP 37	
W/T PVT E-1117		Vieirs, Brandon	1	E-1117	0700-1900	DP 37	
W/T PVT E-1156		Wooten, William	1	E-1156	0700-1900	DP 37	
W/T PVT E-1178		Olson, Ryan	1	E-1178	0700-1900	DP 37	
MAS PVT E-764		Grass, Kelvin	1	E-764	0700-1900	DP 37	
FELB PVT E-831		Alcuna, Eddie	1	E-831	0700-1900	DP 37	
FELB PVT E-1317		Warner, Gary	1	E-1317	0700-1900	DP 37	
SKD PVT E-1266		Vaughn, James	1	E-1266	0700-1900	DP 37	
SKD PVT E-1267		Ross, Kolen	1	E-1267	0700-1900	DP 37	
SKD PVT E-1268		Taylor, Andrew	1	E-1268	0700-1900	DP 37	
6. Work Assignments: Grade roads. Repair fire lines, spread berms and slash piles.							
7. Special Instructions:							
8. Communications (radio and/or phone contact numbers needed for this assignment):							
Name	Ch	Function	Rx Freq	Rx Tone	Tx Freq	Tx Tone	Notes
SHA CMD	1	COMMAND	154.4300	136.5	159.0150	123.0 (T2)	(T2) BASS MTN
VTAC13	14	TACTICAL	158.7375	156.7 (T6)	158.7375	156.7 (T6)	
CALCORD	15	MEDICAL	156.0750	156.7 (T6)	156.0750	156.7 (T6)	MEDICAL
A-G CDF T17	6	A-G	159.3150	192.8	159.3150	192.8	A-G CDF TAC 17
GUARD	16	EMERGENCY	168.6250	0	168.6250	110.9	EMERGENCY USE ONLY
9. Prepared by: Name: B.J. Corey		Pos/Title: RESL		Signature:			
ICS 204		Date/Time: 8/19/2018 2216 hrs					

ASSIGNMENT LIST (ICS 204)


1. Incident Name: Carr		2. Operational Period: Date From: 08/20/18 Date To: 08/21/18 Time From: 0700 Time To: 0700			3. Branch: Supp Repair Div/Group: Trinity Group		
4. Operations Personnel: Operations Section Chief: T. Brownell Night Ops: F. Berbena Branch Director: B. Rowe (12Hr) Division/Group Supervisor: B. Rodgers (12Hr)					Page 2 of 2		
5. Resources Assigned:		** Resources Below in Bold are 12 Hour **			Reporting Location, Special Equipment, Remarks, Notes, and Information Time Location		
Resource Identifier	ALS	Leader	Personnel	Request #			
SKD PVT E-1269		Taylor, Ryan E	1	E-1269	0700-1900	DP 37	
FOW PVT E-1274		Allen, Bobby	1	E-1274	0700-1900	DP 37	
FOW PVT E-1280		Ruste, Joe	1	E-1280	0700-1900	DP 37	
LOG PVT E-1244		Ruste, Joe	1	E-1244	0700-1900	DP 37	
LOG PVT E-1276		Taylor, John	1	E-1276	0700-1900	DP 37	
LOG PVT E-1278		Myers, Todd	1	E-1278	0700-1900	DP 37	
LOG PVT E-1282		Taylor, Logan	1	E-1282	0700-1900	DP 37	
LOG PVT E-1319		Taylor, Wes	1	E-1319	0700-1900	DP 37	
GRD PVT E-1292		Coughlin, Steve	1	E-1292	0700-1900	DP 37	
HEQB NELSON O-659		Nelson, Jon	1	O-659	0700-1900	DP 37	
HEQB SIMPSON O-859		Simpson, Edwin	1	O-859	0700-1900	DP 37	
HEQB (T) BLOCK O-220.56		Block, Joshua	1	O-220.56	0700-1900	DP 37	
HEQB PRIDEMORE (T) O-559		Pridemore, Travis	1	O-559	0700-1900	DP 37	
FALM O-668		Bundy	2	O-668	0700-1900	DP 37	
READ MCFADIN O-940		Mcfadin, Michael	1	O-940	0700-1900	DP 37	
READ MORRILL O-973		Morrill, David	1	O-973	0700-1900	DP 37	
READ PEREZ-DELGADO O-1087		Perez-Delgado, Angelica	1	O-1087	0700-1900	DP 37	
READ MONTAGNE O-200203		Montagne, Brenna	1	O-200203	0700-1900	DP 37	
READ (T) MARTINEZ O-905		Martinez, Samnuel	1	O-905	0700-1900	DP 37	
READ (T) PADILLA O-200019		Padilla, Matthew	1	O-200019	0700-1900	DP 37	
READ (T) RANDOLPH O-200205		Randolph, Alex	1	O-200205	0700-1900	DP 37	
6. Work Assignments: Grade roads. Repair fire lines, spread berms and slash piles.							
7. Special Instructions:							
8. Communications (radio and/or phone contact numbers needed for this assignment):							
Name	Ch	Function	Rx Freq	Rx Tone	Tx Freq	Tx Tone	Notes
SHA CMD	1	COMMAND	154.4300	136.5	159.0150	123.0 (T2)	(T2) BASS MTN
VTAC13	14	TACTICAL	158.7375	156.7 (T6)	158.7375	156.7 (T6)	
CALCORD	15	MEDICAL	156.0750	156.7 (T6)	156.0750	156.7 (T6)	MEDICAL
A-G CDF T17	6	A-G	159.3150	192.8	159.3150	192.8	A-G CDF TAC 17
GUARD	16	EMERGENCY	168.6250	0	168.6250	110.9	EMERGENCY USE ONLY
9. Prepared by: Name: B.J. Corey		Pos/Title: RESL		Signature:			
ICS 204		Date/Time: 8/19/2018		2216 hrs			

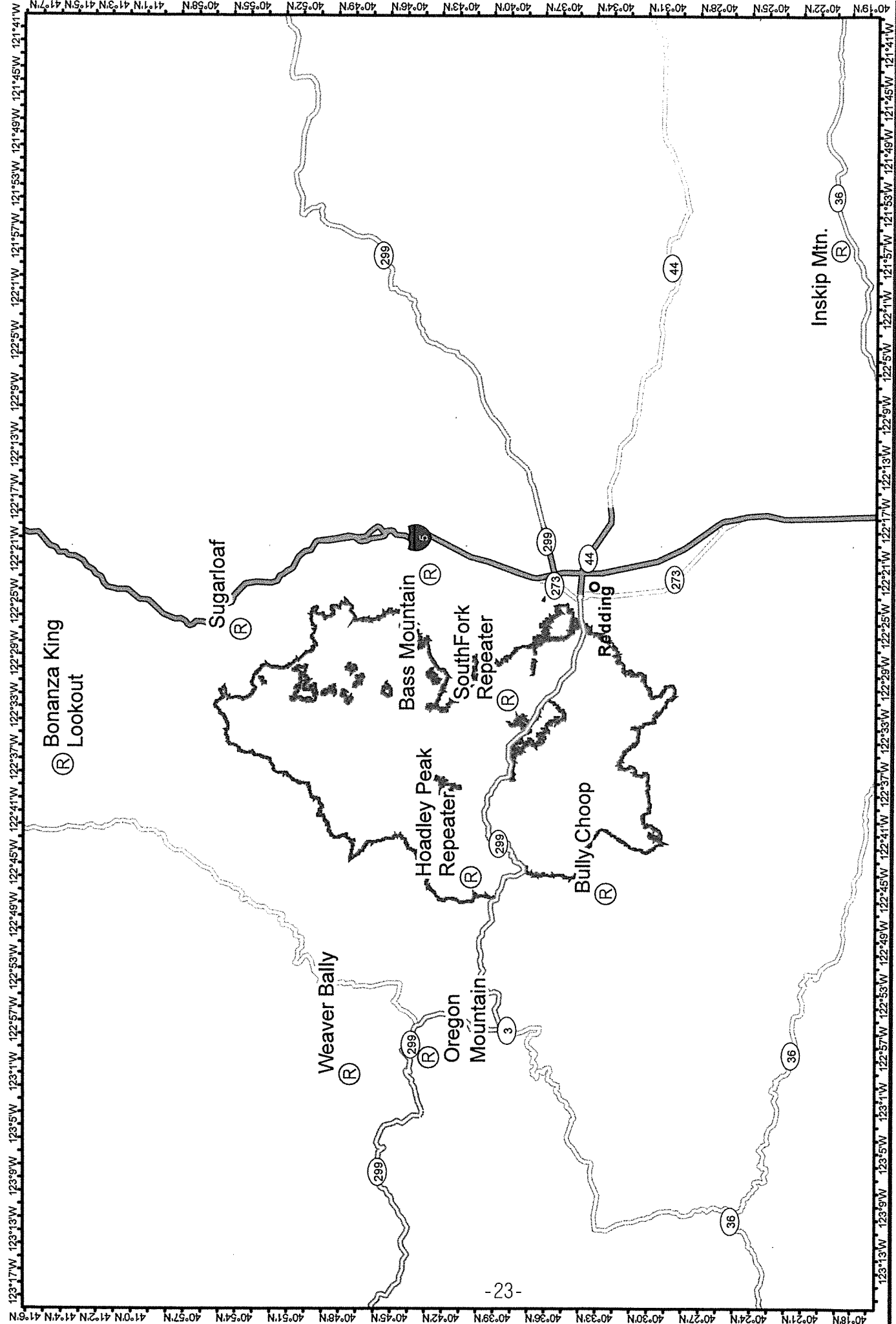
ASSIGNMENT LIST (ICS 204)

1. Incident Name: Carr		2. Operational Period: Date From: 08/20/18 Date To: 08/21/18 Time From: 0700 Time To: 0700				3. Branch: Supp Repair Div/Group: Buckhorn Group Page 2 of 2	
4. Operations Personnel: Operations Section Chief: T. Brownell Night Ops: F. Berbena Branch Director: B. Rowe (12Hr) Division/Group Supervisor: J. Washburn (12Hr)							
5. Resources Assigned:		** Resources Below in Bold are 12 Hour **				Reporting Location, Special Equipment, Remarks, Notes, and Information Time Location	
Resource Identifier	ALS	Leader	Personnel	Request #			
W/T PVT E-1180		Hove, Ken	1	E-1180	0700-1900	DP 55	
W/T PVT E-1182		Leguellec, Michael	1	E-1182	0700-1900	DP 55	
W/T PVT E-1186		Condor, Dave	1	E-1186	0700-1900	DP 55	
W/T PVT E-1243		Mitchell, Shawn	1	E-1243	0700-1900	DP 55	
EXC PVT E-1190		Ingram, Brad	1	E-1190	0700-1900	DP 55	
EXC PVT E-1200		White, Bill	1	E-1200	0700-1900	DP 55	
EXC PVT E-1255		Williams, John	1	E-1255	0700-1900	DP 55	
EXC PVT E-1257		Pereira, Kyle	1	E-1257	0700-1900	DP 55	
EXC PVT E-1309		Johnson, Dave	1	E-1309	0700-1900	DP 55	
EXC PVT E-1311		Hobbs, Anthony	1	E-1311	0700-1900	DP 55	
MAS PVT E-760		Lester, Louis	2	E-760	0700-1900	DP 55	
MAS PVT E-1122		Despars, Dave	1	E-1122	0700-1900	DP 55	
GRD PVT E-192		Stenberg, Mike	1	E-192	0700-1900	DP 55	
GRD PVT E-1297		Helie, Brian	1	E-1297	0700-1900	DP 55	
HEQB SILVA O-282		Silva, Joey	1	O-282	0700-1900	DP 55	
HEQB (T) FARNSWORTH O-281		Farnsworth, Joe	1	O-281	0700-1900	DP 55	
HEQB VERSKA O-566		Verska, Joseph	1	O-566	0700-1900	DP 55	
READ ARCHER O-200184		Archer, Lauren	1	O-200184	0700-1900	DP 55	
READ FARRIS O-200195		Farris, Pat	1	O-200195	0700-1900	DP 55	
FIRS WOESSNER O-920		Woessner, John	1	O-920	0700-1900	DP 55	
RESP FELLER O-183		Feller, Pete	1	O-183	0700-1900	DP 55	
6. Work Assignments: Grade roads. Repair fire lines, spread berms and slash piles.							
7. Special Instructions:							
8. Communications (radio and/or phone contact numbers needed for this assignment):							
Name	Ch	Function	Rx Freq	Rx Tone	Tx Freq	Tx Tone	Notes
SHA CMD	1	COMMAND	154.4300	136.5	159.0150	123.0 (T2)	(T2) BASS MTN
VTAC13	14	TACTICAL	158.7375	156.7 (T6)	158.7375	156.7 (T6)	
CALCORD	15	MEDICAL	156.0750	156.7 (T6)	156.0750	156.7 (T6)	MEDICAL
A-G CDF T17	6	A-G	159.3150	192.8	159.3150	192.8	A-G CDF TAC 17
GUARD	16	EMERGENCY	168.6250	0	168.6250	110.9	EMERGENCY USE ONLY
9. Prepared by: Name:		B.J. Corey		Pos/Title: RESL		Signature:	
ICS 204		Date/Time: 8/19/2018		2216 hrs			

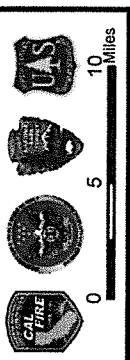
ICS 205 - INCIDENT RADIO COMMUNICATIONS PLAN

CONTROLLED UNCLASSIFIED
INFORMATION//BASIC

1. Incident Name: Carr SHU/SHF IA		2. Date/Time Prepared Date: 08/19/2018 Time: 1830		3. Operational Period: Date To: 08/21/18 Time To: 0700				
4. Communications								
Ch#	Function	Name	Assigned To	Rx Freq	Rx Tone	Tx Freq	Tx Tone	Notes
1	SHU L	SHU L T1	CALFIRE SHU	151.1600	136.5	159.2700	110.9	(T1) BUNCHGRASS
2	SHU L	SHU L T2	CALFIRE SHU	151.1600	136.5	159.2700	123.0	(T2) SOUTH FORK
3	SHU L	SHU L T3	CALFIRE SHU	151.1600	136.5	159.2700	131.8	(T3) HOADLEY
4	SHU L	SHU L T4	CALFIRE SHU	151.1600	136.5	159.2700	136.5	(T4) LATOUR
5	SHF	SHF T1	SHF	171.5750	0	165.0125	110.9	(T1) BONANZA KING
6	SHF	SHF T7	SHF	171.5750	0	165.0125	167.9	(T7) BULLY CHOOP
7	SHF	SHF T10	SHF	171.5750	0	165.0125	107.2	(T10) SUGAR LOAF
8	RDN F-1	RDN F1	REDDING CITY	154.3250	0	153.7700	136.5	
9	RDN TAC 1	RDN T1	REDDING TAC	154.2050	0	154.2050	0	
10	TACTICAL	CDF A/G 2	AIR TO GRND	159.2625	192.8 (T16)	159.2625	192.8 (T16)	
11	TACTICAL	CDF T9	TAC	151.3850	192.8 (T16)	151.3850	192.8 (T16)	
12	TACTICAL	CDF T1	TAC	151.2575	192.8 (T16)	151.2575	192.8 (T16)	
13	TACTICAL	CDF T11	TAC	151.4450	192.8 (T16)	151.4450	192.8 (T16)	EMERGENCY USE ONLY
14	TACTICAL	CDF T12	TAC	151.4600	192.8 (T16)	151.4600	192.8 (T16)	
15	MEDICAL	CALCORD	MEDICAL	156.0750	156.7 (T6)	156.0750	156.7 (T6)	
16	EMERGENCY	GUARD	EMERGENCY	168.6250	0	168.6250	110.9	
17								
18								
19								
20	EMERGENCY	GUARD	EMERGENCY	168.6250	0	168.6250	110.9	
5. Special Instructions								
6. Prepared by (Communications Unit Leader): Name: Tom Webb						Signature: 		
ICS 205 - CONTROLLED UNCLASSIFIED INFORMATION//BASIC						Date/Time: 08/19/18 1830		



Carr Fire
CA-SHU-007808
COMMS
Aug 19, 2018



Communication Map
Carr Fire
CA-SHU-007808

Legend:

- Camp
- Incident Command Post
- Drop Point

NAD83 1:525,000



MEDICAL PLAN (ICS 206)

1. Incident Name: CARR INCIDENT	2. Operational Period: Date From: 08/20/2018 Time From: 07:00	Date To: 08/21/2018 Time To: 07:00
---	--	---

3. Medical Aid Stations:		MEDICAL UNIT LEADER: (408) 710-7196	COMMUNICATIONS UNIT: (530) 949-6816
Name	Location	Contact Number(s)/Frequency	Paramedics on Site?
MERT	BASE CAMP (BY CDC SLEEPING AREA)	(530) 310-0716	RN & PA
EXPEDITORS	ANDERSON FAIRGROUNDS (NEAR BRIEFING)	---	NONE
FRONTLINE MEDICAL	RED BLUFF FAIRGROUNDS	(530) 604-8380	PARAMEDICS

4. Transportation (indicate air or ground):			
Ambulance Service	Location	Contact Number(s)/Frequency	Level of Service
AMR Medic 145 (GROUND)	LAKEHEAD	SHASTA COMMAND	ALS-12hour Day
REACH AIRSHIP 5	1524 East St. Redding	(877) 939-6300	RN
PHI AIR MED	5900 Old Oregon Trail Redding	(800) 597-9571	RN
CHP 14 & 16 (HOIST)	2651 Gold Street (Benton Airpark), Redding	(530) 225-2040	ALS / HOIST
CALFIRE COPTER 901 (HOIST)	MOUNTAIN GATE HELIBASE	(805) 305-0211	BLS DAY HOIST

5. Hospitals:							
Hospital Name	Address, Latitude & Longitude if Helipad	Contact Number(s)/Frequency	Travel Time		Trauma Center	Burn Center	Helipad
			Air	Ground			
SHASTA REG MED CTR MED 2	1100 BUTTE ST, REDDING 40° 35.106'N, 122° 23.268'W	(530) 244-5400 468.025 Tx, 468.025 Rx PL 5	10 MIN	29 MIN	YES LEVEL: 3	NO	YES
MERCY MED CTR MED 4	2175 ROSALINE AVE, REDDING 40° 34.332'N, 122° 23.796'W	(530) 225-7201 468.075 Tx, 468.000 Rx PL 5	10 MIN	29 MIN	YES LEVEL: 2	NO	YES
UC DAVIS MED 8	2315 STOCKTON BLVD SACRAMENTO 38° 33.360'N, 121° 27.330'W	(916) 734-2011 446.525 Tx, 203.5 Rx	1.25 HOUR	3.5 HOUR	YES Level: 1	YES	YES
TRINITY HOSPITAL WEAVERVILLE	60 EASTER AVENUE WEAVERVILLE N40° 44.275' W122°56.359'	(530)623-5541 x1	20 MIN	45 MIN	NO	NO	YES

6. Special Medical Emergency Procedures:
LINE EMERGENCY:
 Crew Supervisor to contact Division Supervisor with patient complaint/condition, location, and resource needs.

- Division Supervisor contacts and gives report on conditions, complaint/condition, and resource needs to:
 1. Nearest Line FEMT/FEMP
 2. Communications Unit
- Emergency or Priority traffic received: Communication Unit will clear the command channel for emergency traffic only, for the duration of the MAJOR IWI
- Communications Unit will make proper notifications
- OPERATIONS can declare a MAJOR IWI based on the report on conditions from the division supervisor
- Division Supervisor or designee will serve as point of contact (IWI SUPERVISOR) and run the emergency utilizing the **COMMAND CHANNEL** and **CALCORD** for the tac net during the IWI

****ALL EMERGENCIES: Secure the area and identify witnesses for later investigation. Keep an accurate log of events****

*****START 20 MINUTE TIMER IF IWI*****

BASE CAMP EMERGENCY:
CONTACT COMMUNICATIONS UNIT AT: (530) 949-6816 report patient complaint/condition and location. Medical Staff will respond to stabilize incident

- COMMUNICATIONS Unit contacts:
 1. Operations
 2. Medical
 3. Safety
 4. Logistics

INJURY REPORTING PROCEDURES
 CHIEF COMPLAINT _____
 LOCATION OF PATIENT _____
 TRANSPORT REQUEST BY: AIR ___ GROUND ___
 DIVISION _____ CREW _____
 POINT OF PICKUP _____
 LAT _____ LONG _____
 IS EMT WITH THE PATIENT: YES ___ NO ___
 AGE _____
 SEX: MALE ___ FEMALE ___
****Pre-determined rendezvous location for transfer from rescue helicopter to ground ambulance or air ambulance: Mountain Gate HELIBASE****

N 40°42.30 W 122°20.46
 14324 Wonderland BLVD.
 REDDING, 96003

7. Prepared by (Medical Unit Leader): Name: JESSE WINNEN	Signature:
---	------------

8. Approved by (Safety Officer): ANTHONY STORNETTA	Signature:
---	------------

ICS 206	IAP Page _____	Date/Time: 08/19/2018 1500
---------	----------------	----------------------------



CARR FIRE

CA-SHU-007808

FINANCE MESSAGE

Finance / Admin Section

- Finance Section is located in Fusaro Building
- Please come by the Time Unit and start your and update your FC-33
- Vendors please drop off your agreements to the Time Unit
- Shift Tickets need to be completed by line supervisor and turned and the end of each shift.
- All injuries need to be reported to the COMP / CLAIMS Unit
- All property Damage must be reported and documented
- Please report any Vehicle Damage this includes Rental Vehicles
- Local Government please check in with OES
- Federal Time: Timekeeper on site.
- **OFF-SITE FEEDING IS NOT APPROVED**
- Water usage report needs to be turned in daily to the COMP / CLAIMS Unit

- ***This fire is a under cost apportionment***
ALL DIVS, OPBD, STAM NEED TO DEBRIEF WITH THE COST APPORTIONMENT TEAM DAILY.
Cost apportionment is located in the trailer directly across from Fusaro Hall.

INCIDENT BILLING INFORMATION

CAL FIRE – SHASTA / TRINITY UNIT

875 CYPRESS AVE.
Redding Ca. 96001

Index Code: 2400

E-fund Billing Code: 013860

Federal P Code: PPL1A6 (1502) [P]

SHIFT TICKET EXAMPLE

EMERGENCY SHIFT TICKET and EVALUATION FORM					Contractor Name																															
Incident or Project Name LILAC INC			Incident Number CAMVU024612	Request Number E#	DOZER DUDE																															
Agreement Number XXX - 000000 - 00					Operator #1 BOB SMITH	Operator #2 TOM SMITH																														
Equipment Make CAT			Equipment Model / Type D6XM		Operator Furnished By: <input checked="" type="checkbox"/> Contractor <input type="checkbox"/> Government																															
Serial Number FULL VIN#			Licence Number 1234567		Operating Supplies Furnished By: <input checked="" type="checkbox"/> Contractor <input type="checkbox"/> Government																															
Equipment Use (Circle) Hours Days / Miles					Equipment Status <input checked="" type="checkbox"/> Inspected <input checked="" type="checkbox"/> Under Agreement																															
Date	Start	Stop	Work	Assignment																																
Mo / Day																																				
12/8	0700	2400	17	DIV M																																
12/9	0001	0700	7	DIV M																																
Vendor Rating					Remarks/Comments **																															
<table border="1"> <tr> <th>Poor*</th> <th>Avg.</th> <th>Good</th> <th>Exc.</th> <th>N/A</th> </tr> <tr> <td></td> <td></td> <td></td> <td></td> <td></td> </tr> </table>					Poor*	Avg.	Good	Exc.	N/A						Govt. Rep. Name and Position - PRINT Mike Weber																					
Poor*	Avg.	Good	Exc.	N/A																																
<table border="1"> <tr> <td>Met Performance Expectations</td> <td></td> <td></td> <td></td> <td></td> </tr> <tr> <td>Equipment in Safe Working Condition</td> <td></td> <td></td> <td></td> <td></td> </tr> <tr> <td>Operator Skill Level</td> <td></td> <td></td> <td></td> <td></td> </tr> <tr> <td>Operates Safely</td> <td></td> <td></td> <td></td> <td></td> </tr> <tr> <td>Operator's Cooperation Level</td> <td></td> <td></td> <td></td> <td></td> </tr> <tr> <td>Overall Performance</td> <td></td> <td></td> <td></td> <td></td> </tr> </table>					Met Performance Expectations					Equipment in Safe Working Condition					Operator Skill Level					Operates Safely					Operator's Cooperation Level					Overall Performance					Govt. Rep. Signature <i>Mike Weber</i>	
Met Performance Expectations																																				
Equipment in Safe Working Condition																																				
Operator Skill Level																																				
Operates Safely																																				
Operator's Cooperation Level																																				
Overall Performance																																				
Vendor Rating must be done.					Contractor Signature <i>Bob Smith</i>																															
					Date 08/04/15 Time 0800																															
* NOTE: Any rating of POOR requires an explanation in Comment Section.					CALFIRE 297 (Rev 3-2011)																															
**Final evaluation or for more documentation, use an ICS Form 230 or equivalent.																																				
Pink - Finance		Blue - Home Unit HE Coordinator		Yellow - Vendor		White - Govt Representative																														

EMERGENCY SHIFT TICKET and EVALUATION FORM					Contractor Name																															
The responsible Government Officer will complete this form each shift																																				
Incident or Project Name LILAC INC			Incident Number CAMVU 024612	Request Number E #	DUDE TRANSPORT																															
Agreement Number XXX - 000000 - 00					Operator #1 BOB SMITH	Operator #2 TOM SMITH																														
Equipment Make TRANSPORT/ KENWORTH			Equipment Model / Type COZAD TRAILER /26 WHEELS		Operator Furnished By: <input checked="" type="checkbox"/> Contractor <input type="checkbox"/> Government																															
Serial Number 1XP3ESMP14239012			Licence Number 9999999		Operating Supplies Furnished By: <input checked="" type="checkbox"/> Contractor <input type="checkbox"/> Government																															
Equipment Use (Circle) Hours Days / Miles					Equipment Status <input checked="" type="checkbox"/> Inspected <input checked="" type="checkbox"/> Under Agreement																															
Date	Start	Stop	Work	Assignment																																
Mo / Day																																				
12/8	0700	2400	17	DIV M																																
12/9	0001	0700	7	DIV M																																
Vendor Rating					Remarks/Comments **																															
<table border="1"> <tr> <th>Poor*</th> <th>Avg.</th> <th>Good</th> <th>Exc.</th> <th>N/A</th> </tr> <tr> <td></td> <td></td> <td></td> <td></td> <td></td> </tr> </table>					Poor*	Avg.	Good	Exc.	N/A						Govt. Rep. Name and Position - PRINT Mike Weber																					
Poor*	Avg.	Good	Exc.	N/A																																
<table border="1"> <tr> <td>Met Performance Expectations</td> <td></td> <td></td> <td></td> <td></td> </tr> <tr> <td>Equipment in Safe Working Condition</td> <td></td> <td></td> <td></td> <td></td> </tr> <tr> <td>Operator Skill Level</td> <td></td> <td></td> <td></td> <td></td> </tr> <tr> <td>Operates Safely</td> <td></td> <td></td> <td></td> <td></td> </tr> <tr> <td>Operator's Cooperation Level</td> <td></td> <td></td> <td></td> <td></td> </tr> <tr> <td>Overall Performance</td> <td></td> <td></td> <td></td> <td></td> </tr> </table>					Met Performance Expectations					Equipment in Safe Working Condition					Operator Skill Level					Operates Safely					Operator's Cooperation Level					Overall Performance					Govt. Rep. Signature <i>Mike Weber</i>	
Met Performance Expectations																																				
Equipment in Safe Working Condition																																				
Operator Skill Level																																				
Operates Safely																																				
Operator's Cooperation Level																																				
Overall Performance																																				
Vendor Rating must be done.					Contractor Signature <i>Bob Smith</i>																															
					Date 08/04/15 Time 0800																															
* NOTE: Any rating of POOR requires an explanation in Comment Section.					CALFIRE 297 (Rev 3-2011)																															
**Final evaluation or for more documentation, use an ICS Form 230 or equivalent.																																				
Pink - Finance		Blue - Home Unit HE Coordinator		Yellow - Vendor		White - Govt Representative																														

Turn shift tickets into Finance.



PUBLIC INFORMATION SECTION



Incident Information Line: (530) 225-2510
Incident Media Line: (530) 448-2466

Email Updates (sign up):
www.tinyurl.com/carrfire

STATUS	
Incident Start Date: 7/23/2018	Incident Start Time: 1:15 PM
Cause: Mechanical Failure of Vehicle	Acres:
Containment:	Total Personnel:

MEDIA – The California State Penal Code Section 409.5(d) allows the news media to enter scenes of disaster, riot or civil disturbance. Properly identified members of the news media should not be restricted from entering locations specified within the code. However, this does not include crime scenes, private property and does not imply that the news media may interfere with incident operations while they are in the areas of concern. More information can be found [here](#).



CAL FIRE SOCIAL MEDIA POLICY – When assigned to a CAL FIRE incident, you will adhere to the CAL FIRE Social Media Policy, Section 0691. You can find further information about the CAL FIRE Social Media Policy [here](#).



PHOTOGRAPHS AND VIDEOS OF INCIDENT – We are in a new era of media. Media no longer means news/broadcast industry, but now refers to anyone that has the capability to shoot video, photographs and post them onto social media sites in a matter of minutes. Unfortunately, we have seen some instances of photographs or videos that have depicted unsafe, unprofessional or embarrassing circumstances which are a serious breach of ethics. When this happens, it reflects poorly on all that are attached to this incident. Posting an inappropriate video, photo or blog comment could expose oneself to unwanted ramifications. It may be unsafe to shoot photos or video and a firefighter who is concentrating on a camera loses their situational awareness.

The Public Information Office would like copies of the video and pictures that you safely took while not in an emergency situation, fire suppression activity or in an overhead assignment. Bring your video and pictures to the Public Information trailer; they will be reviewed and possibly uploaded to our many CAL FIRE social media sites. Remember, we don't want photographs or videos that depict unsafe, unprofessional or embarrassing circumstances, which are a serious breach of ethics.

LOST AND FOUND – The Information Section will manage lost and found items for the incident. If you have lost an item please leave your contact information and what you have lost at the Information Section. If you have found an item on the incident, bring the item to the Information Section with your contact information as well. All items left in Lost and Found will be turned over to the local CAL FIRE Shasta Unit.

MAIL SERVICE – The Information trailer will still be available for outgoing mail, but as we continue to demobilize we urge everybody to stop having packages delivered to the incident.

DEMOBILIZATION INSTRUCTIONS

CARR

CA-SHU-007808

DEMOB PROCEDURES

- CHECK THE DEMOB LIST EACH MORNING. YOU CAN FIND THE DEMOB LIST THROUGH THE “QR” CODE ON THE I.A.P. COVER OR ON LISTS POSTED THROUGHOUT CAMP. **ONLY REPORT TO DEMOB AT YOUR SCHEDULED TIME.** EARLY ADMITTANCE WILL NOT BE ALLOWED.
- **FLIGHT ARRANGEMENTS MUST BE MADE 48HRS PRIOR TO RELEASE.**
- REPORT TO DEMOB AT APPOINTMENT TIME TO RECEIVE A CHECKOUT FORM (ICS-221), THEN GO TO THE FOLLOWING UNITS TO OBTAIN THE NECESSARY SIGNATURES:
 - ✓ SUPPLY UNIT
 - ✓ COMMUNICATIONS UNIT
 - ✓ GROUND SUPPORT/VEHICLE INSPECTION***
 - ✓ DOCUMENTATION UNIT
 - ✓ TIME UNIT
 - ✓ TRAINING UNIT (IF APPLICABLE)
 - ✓ ACCOMMODATIONS (IF APPLICABLE)

***VEHICLE INSPECTION:

- THE DEMOB UNIT WILL INFORM YOU IF THE VEHICLE NEEDS TO BE INSPECTED.
- YOU MUST HAVE THE ICS-221 DEMOB FORM WITH YOU AT VEHICLE INSPECTION.
- A VEHICLE INSPECTION TIME WILL BE PROVIDED WHEN YOU INITIALLY ARRIVE TO THE DEMOBILIZATION UNIT.
- **DO NOT REPORT FOR VEHICLE INSPECTION PRIOR TO YOUR APPOINTMENT**

HAVE YOUR EQUIPMENT INVENTORY CARD READY WHEN HEADING TO VEHICLE INSPECTION.

RETURN THE COMPLETED ICS-221 FORM TO THE DEMOB UNIT AND TRAVEL HOME SAFE!





TRAINING **SPECIALIST MESSAGE**

OFFICE LOCATION IS IN THE FUSARO BUILDING

Tuesday, August 21, 2018 @ 1200 hours is the deadline to close out your training assignment. If you do not close out with the TNSP, you will not receive documented credit for this incident.

Bring the following to the “exit interview”

- Your properly initiated Position Task Book**
- Completed and signed ICS 225 Performance Evaluation**
- Completed and Signed Evaluation Record**

Forms are available at the Training Desk

Remember: No documentation= it didn't happen!

Dave Randolph TNSP (805) 857-4820
Jamie Heald TNSP-T (805) 990-1828

Peer Support Team Message:

CARR INCIDENT PEER SUPPORT: (916) 591-9004

The gravity of this event is large. Many of us have been impacted by the events that have occurred as well as past incidents.

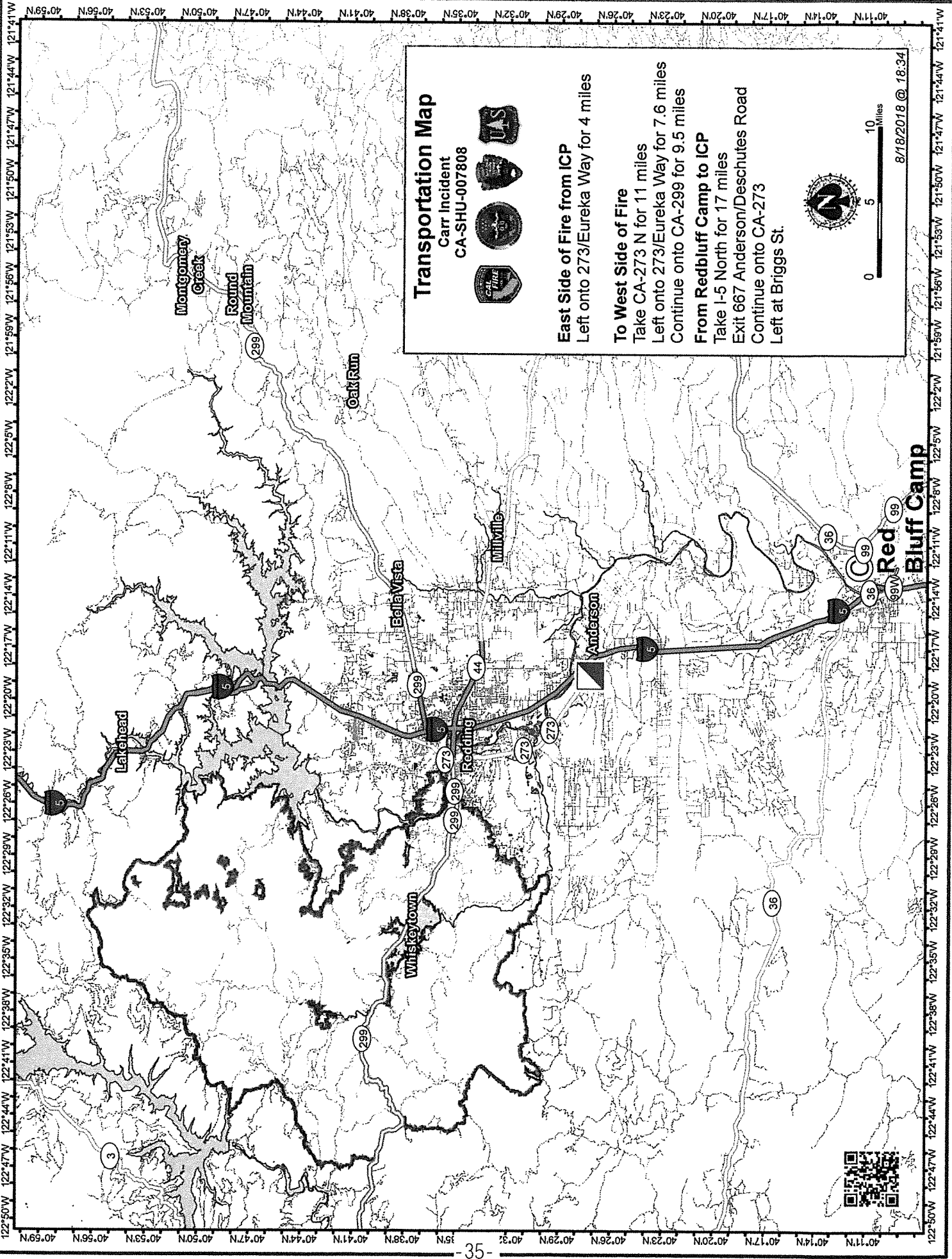
A peer support team has been assembled and Peers are available at the ICP. The Peer Support contact number is (916)-591-9004, which is available 24/7.

Some of the signs and symptoms you may be experiencing include, but are not limited to:

Irritability, lack of sleep, quick to anger, withdrawal, above average tobacco use, an increase in negative coping mechanisms such as excessive alcohol and/or substance abuse. You might experience lack of appetite, isolate yourself, and various other unexplained responses to normal every day events.

You may not be experiencing these symptoms now or during this fire incident. However, you may find yourself experiencing them when you return to your home or unit. You may find yourself being triggered by a past event that has impacted you, while assigned to future incidents. A sight, sound, smell, or touch could trigger a memory that previously existed, but you may not have been aware of.

If you find yourself in this situation and need to talk to someone contact your Employee Assistance Program (EAP). EAP programs are here to help. It is important to be able to talk to someone and get stuff off your chest vs carrying this around for your career.



Transportation Map

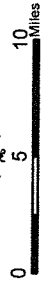
Carr Incident
CA-SHU-007808



East Side of Fire from ICP
Left onto 273/Eureka Way for 4 miles

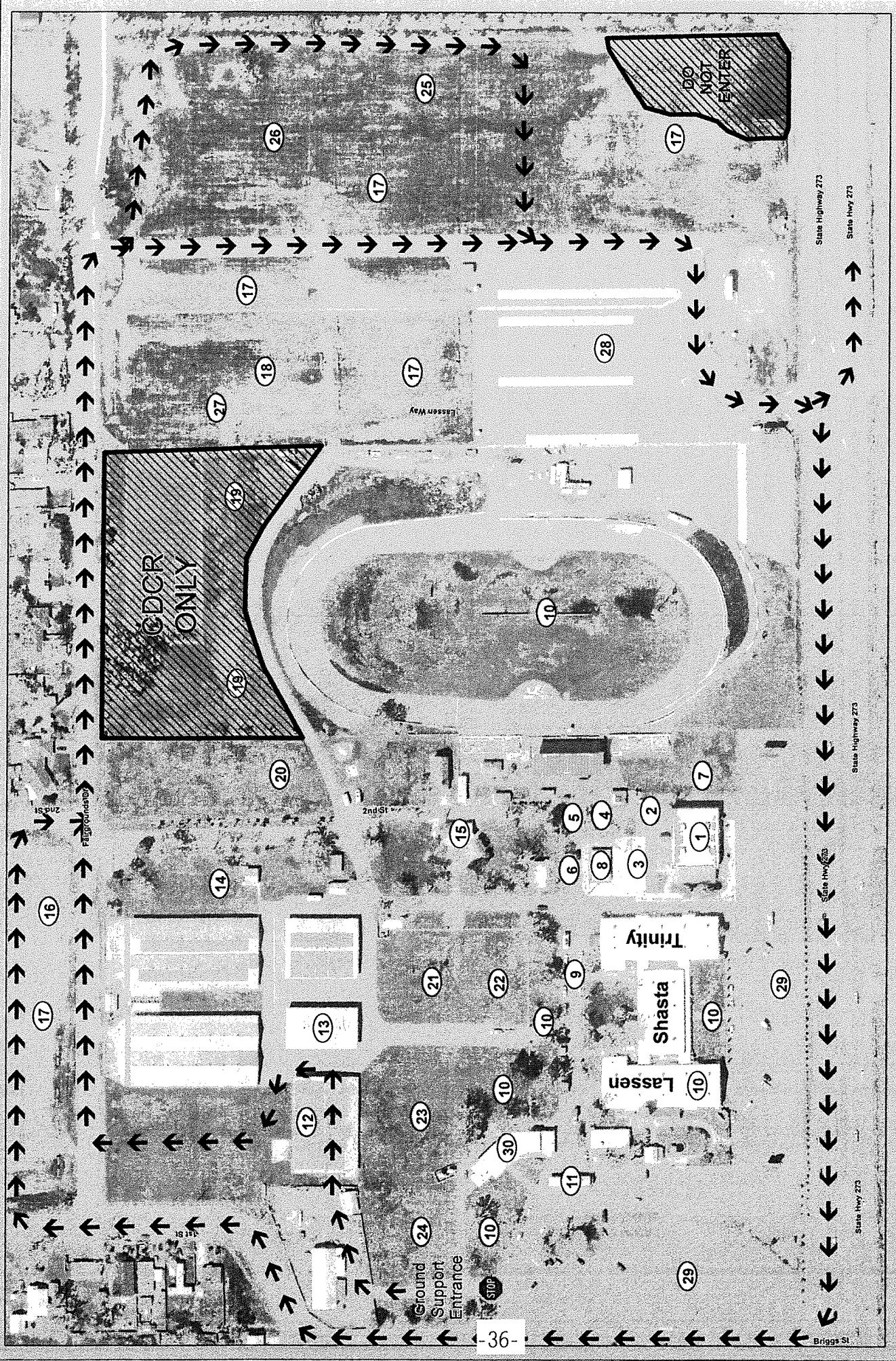
To West Side of Fire
Take CA-273 N for 11 miles
Left onto 273/Eureka Way for 7.6 miles
Continue onto CA-299 for 9.5 miles

From Redbluff Camp to ICP
Take I-5 North for 17 miles
Exit 667 Anderson/Deschutes Road
Continue onto CA-273
Left at Briggs St.



8/18/2018 @ 18:34





NAD 1983 2011 California Teale Albers

Facilities Map CARR INCIDENT CA-SHU-7808


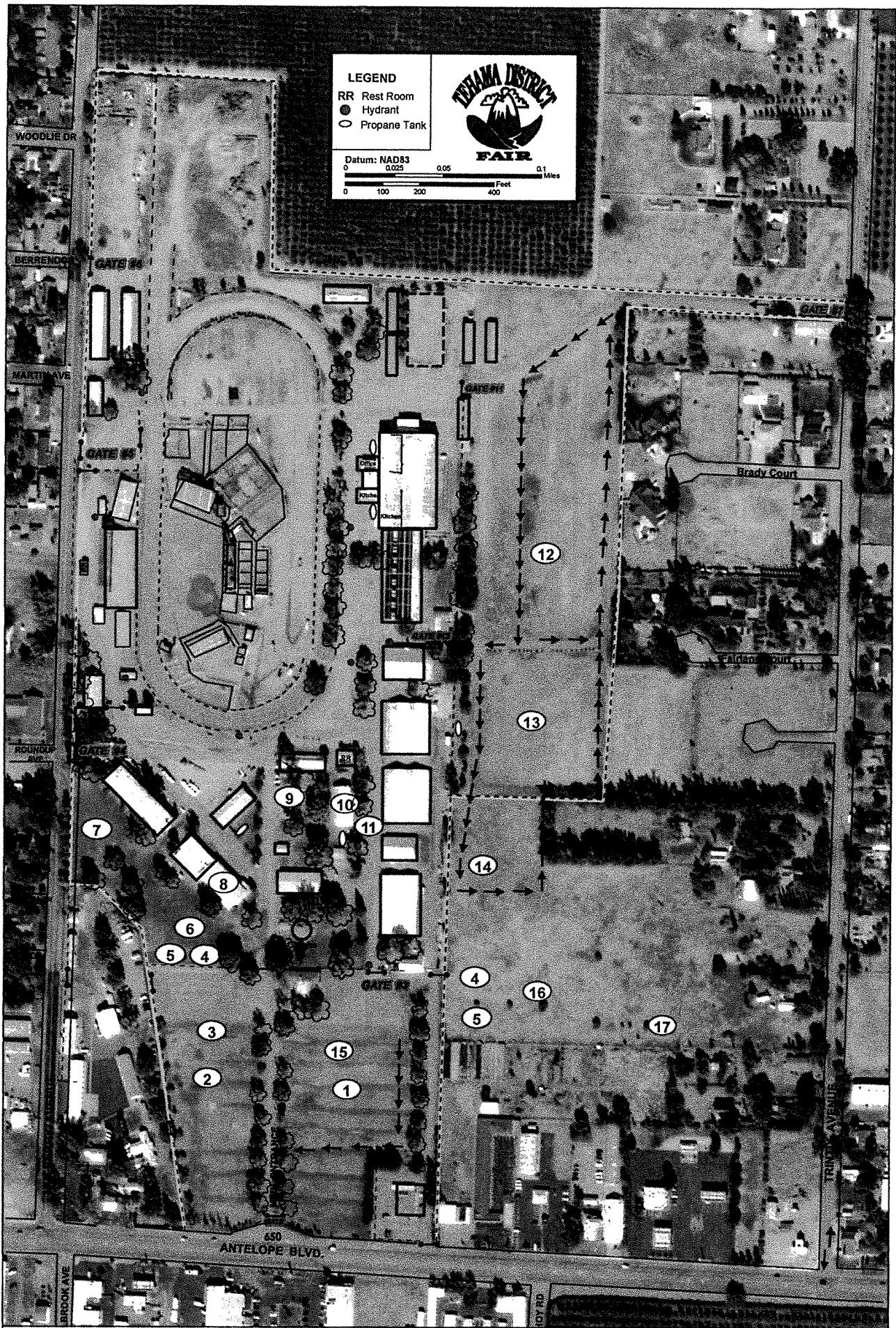
- | | | | | | |
|-------------------------|-------------------|--------------------|-----------------------|---------------------|-----------------------|
| 1. Check-In/Finance | 6. IC | 11. PIO | 16. Lunches/Water/Ice | 21. Laundry | 26. Transport Parking |
| 2. Logistics-Facilities | 7. GIS | 12. Ground Support | 17. Engine Parking | 22. Showers | 27. Weed Wash |
| 3. Communications | 8. Accommodations | 13. Supply | 18. CDCR Parking | 23. Mobile Sleepers | 28. Crew Parking |
| 4. Safety/DPS | 9. OES | 14. Kitchen | 19. CDCR | 24. CCC Sleeping | 29. Overhead Parking |
| 5. Liason | 10. Crew Sleeping | 15. Briefing | 20. MERT | 25. Fuel | 30. Rehab Lounge |



LEGEND

RR Rest Room
 ● Hydrant
 ○ Propane Tank

Datum: NAD83
 0 0.025 0.05 0.1 Miles
 0 100 200 400 Feet

- 1. Engine Fuel
 - 2. Engine Overhead Parking & LOGS
 - 3. Ice/Water/Lunches
 - 4. Laundry
 - 5. Showers
 - 6. Tent W/AC Sleeping
 - 7. Personnel Tents
 - 8. FOOD
 - 9. Food
 - 10. Supply
 - 11. Medical
 - 12. National Guard Fuel
 - 13. National Guard Parking
 - 14. Kitchen
 - 15. Engine Parking
 - 16. Tents
 - 17. Smaller Trailers
- *Laundry/Showers Available to All

Facilities Map
 CI -37- INCIDENT
 -HU-7808





CARR INCIDENT LOGISTICS MESSAGE



SERVICES SCHEDULE

Breakfast:	0500-1000
Dinner:	1700-2200
Sack Lunch Distribution:	0500-2100
Laundry Service:	0500-2300
Supply:	0600-2200
Saw Shop:	0600-2200
Showers:	0600-2300
Fuel:	24hr Service

FUEL TRUCK LOCATIONS

Interstate Oil:	Incident Base
Cross Petroleum:	Incident Base
Mean Gene Gas:	Red Bluff
SST Oil Truck #2:	French Gulch, DP 30
Ed Staubs and Son:	Lakehead, DP 31

REFRIDGERATION TRUCKS and HYDRATION STATIONS (ICE, WATER and GATORADE)

- DP 30, French Gulch
- DP 31, Lakehead

