

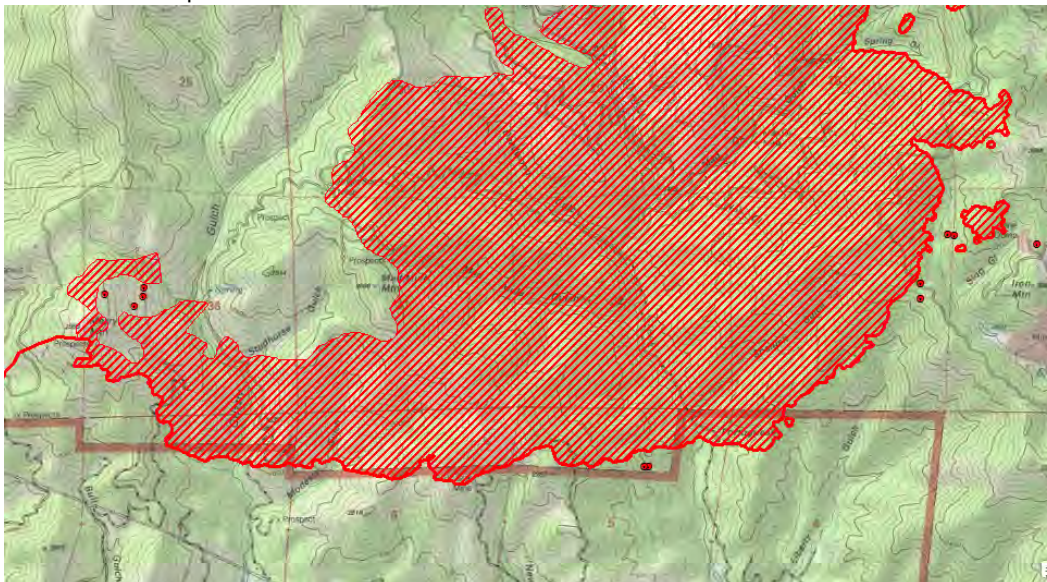
## INFRARED INTERPRETER'S DAILY LOG

<b>Incident Name:</b> Carr CA-SHU-007808	<b>IR Interpreter(s):</b> Tammy Hocut thocut@fs.fed.us	<b>Local Dispatch Phone:</b> 530-225-2411	<b>Interpreted Size:</b> 11,659 Acres <b>Growth:</b> 4,643 Acres
<b>Flight Time:</b> 2334 (MDT) <b>Flight Date:</b> 07/25/2018	<b>Interpreter(s) location:</b> Jasper, AR <b>Interpreter(s) Phone:</b> 870-446-5878 (landline) 870-365-2810 (cell)	<b>GACC IR Liaison:</b> Kyle Felker <b>GACC IR Liaison Phone:</b> 530-251-6112	<b>National Coordinator:</b> Tom Mellin <b>National Coord. Phone:</b> 505-301-8167
<b>Ordered By:</b> Eric Scovel: SITL 707-477-5194 ericscovel@yahoo.com	<b>A Number:</b> A-79	<b>Aircraft/Scanner System:</b> N144Z / Phoenix	<b>Pilots/Techs:</b> Johnson & Netcher / Bob Brantlinger & Mike Mann
<b>IRIN Comments on imagery:</b> 2 pass, Ortho and Color flown in an east-west direction. The most west image strip had a lot of false heat trips.		<b>Weather at time of flight:</b> Clear	<b>Flight Objective:</b> Identify and map Heat perimeter, Scattered Heat and Isolated Heat Sources.
<b>Date and Time Imagery Received by Interpreter:</b> 07/26/2018 – 0028 (MDT)		<b>Type of media for final product:</b> Shape files, KMZ, PDF, and IRIN Log	
<b>Date and Time Products Delivered to Incident:</b> 07/26/2018 – 0230 (MDT)		<b>Digital files sent to: NIFC FTP @</b> <a href="https://ftp.nifc.gov/public/incident_specific_data/calif_n/!CALFIRE/2018_Incidents/CA-SHU-007808_Carr/IR/20180726/">https://ftp.nifc.gov/public/incident_specific_data/calif_n/!CALFIRE/2018_Incidents/CA-SHU-007808_Carr/IR/20180726/</a>	

**Comments /notes on tonight's mission and this interpretation:**

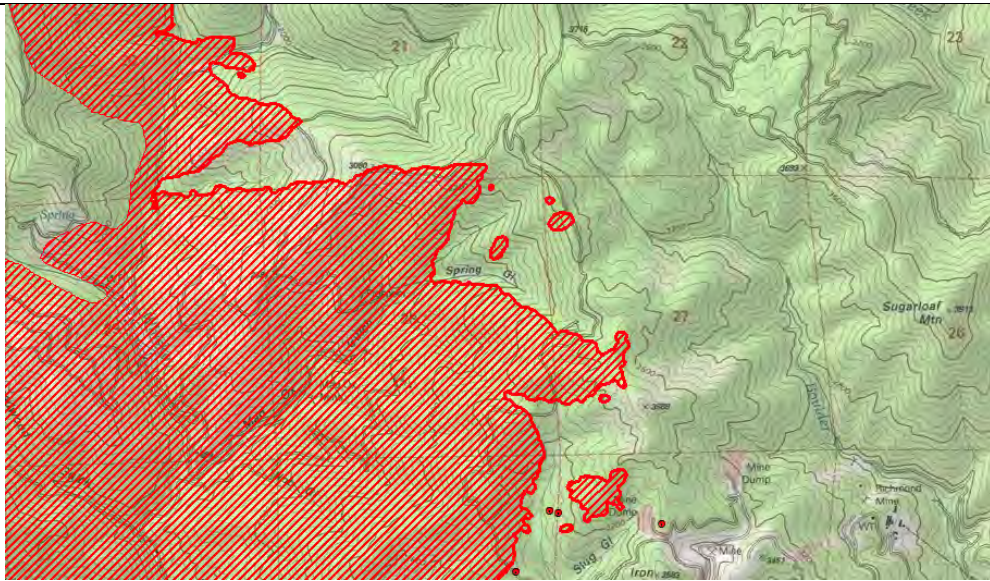
I started with 07/25/2015 incident heat perimeter – 7,016 acres. Fire grew very hot – large heat plume – to the east. Growth was 4,643 acres for a total of 11,659 acres.

Fire great on the east side of the fire with a lot of intense heat which produced a large heat plume. Growth was from Merry Mountain on the south east side of the fire in section 36 then traveling east to section 34 at Iron Mountain where there was a lot of spotting and a few heat polygons outside the main heat perimeter.

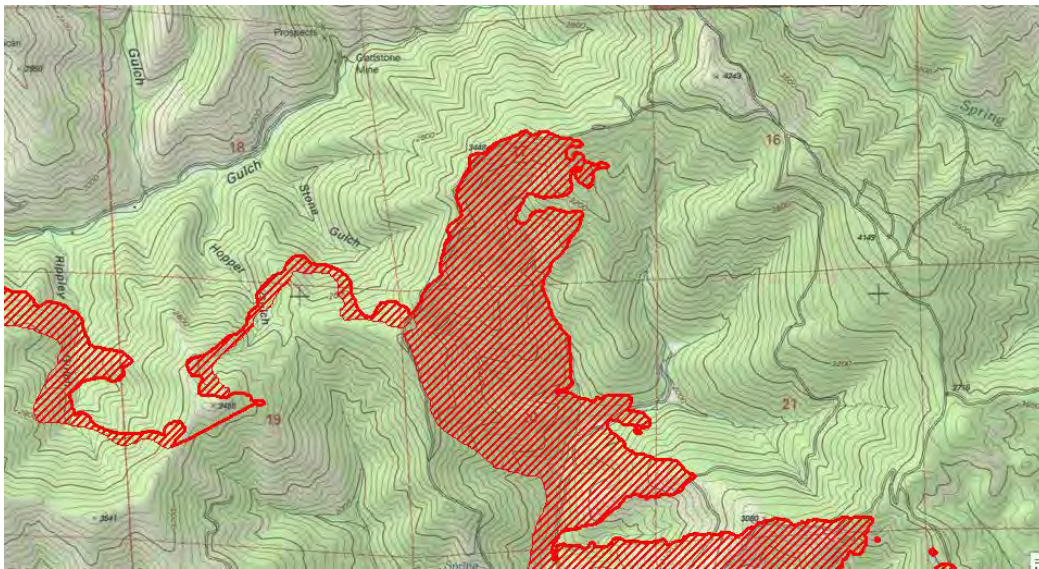


Fire grew intensely to the north of Iron Mountain in the Spring Gulch area with heat polygons and spots outside the main fire perimeter in sections 27 and 28.

# INFRARED INTERPRETER'S DAILY LOG



Fire grew intensely on the north east side staying south of the Gladstone Mine and Cline Gulch.



On the west side of the fire, it great up toward the Brunswick Mine area but stayed between the Brunswick Ridge and the Summit Gulch.

