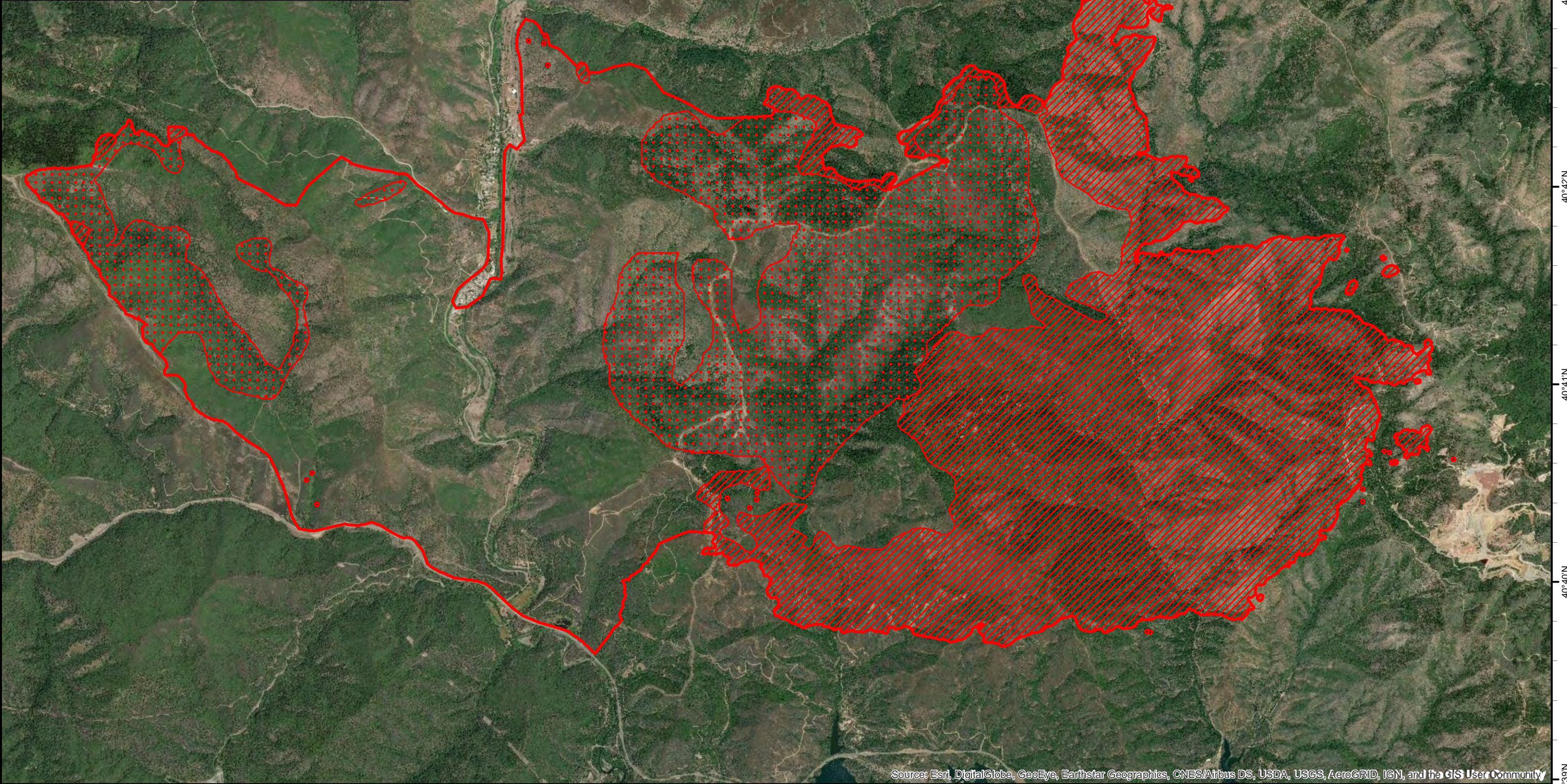

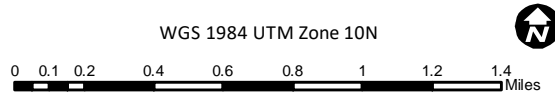


122°41'W 122°40'W 122°39'W 122°38'W 122°37'W 122°36'W 122°35'W 122°34'W 122°33'W 122°32'W

**Infrared Map**  
**Carr (CA-SHU-007808)**  
**Map Date: 07/26/2018**  
**Imagery Date: 07/25/2018**  
**Imagery Time: 2334 MDT**  
**IR Interpreted Acres: 11,659 acres**  
**IRIN: Tammy Hocut**

- Isolated Heat Sources
- Heat Perimeter
- ▨ Intense Heat
- ⋯ Scattered Heat

WGS 1984 UTM Zone 10N



Source: Esri, DigitalGlobe, GeoEye, Earthstar Geographics, CNES/Airbus DS, USDA, USGS, AeroGRID, IGN, and the GIS User Community

122°41'W 122°40'W 122°39'W 122°38'W 122°37'W 122°36'W 122°35'W 122°34'W 122°33'W 122°32'W

40°43'N  
40°42'N  
40°41'N  
40°40'N  
40°39'N

40°43'N  
40°42'N  
40°41'N  
40°40'N  
40°39'N