

INFRARED INTERPRETER'S DAILY LOG

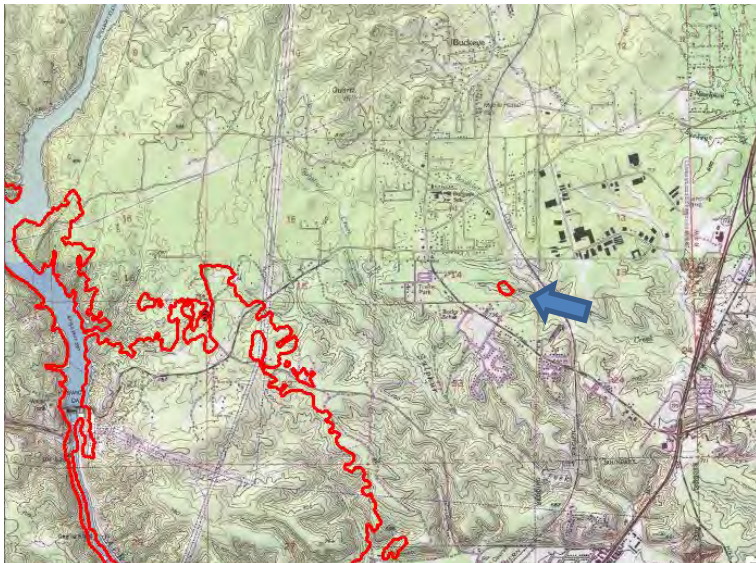
Incident Name: Carr CA-SHU-007808	IR Interpreter(s): Tammy Hocut thocut@fs.fed.us	Local Dispatch Phone: 530-225-2411	Interpreted Size: 44,450 Acres Growth: 32,791 Acres
Flight Time: 0034 (MDT) Flight Date: 07/27/2018	Interpreter(s) location: Jasper, AR Interpreter(s) Phone: 870-446-5878 (landline) 870-365-2810 (cell)	GACC IR Liaison: Kyle Felker GACC IR Liaison Phone: 530-251-6112	National Coordinator: Tom Mellin National Coord. Phone: 505-301-8167
Ordered By: Eric Scovel: SITL 707-477-5194 ericscovel@yahoo.com	A Number: A-106	Aircraft/Scanner System: N144Z / Phoenix	Pilots/Techs: Johnson & Netcher / Mike Mann
IRIN Comments on imagery: 3 passes, Ortho and Color flown in an east-west direction.		Weather at time of flight: Clear	Flight Objective: Identify and map Heat perimeter, Scattered Heat and Isolated Heat Sources.
Date and Time Imagery Received by Interpreter: 07/27/2018 – 0125 (MDT)		Type of media for final product: Shape files, KMZ, PDF, and IRIN Log	
Date and Time Products Delivered to Incident: 07/27/2018 – 0400 (MDT)		Digital files sent to: NIFC FTP @ https://ftp.nifc.gov/public/incident_specific_data/calif_n!/CALF/IRE/2018_Incidents/CA-SHU-007808_Carr/IR/20180727/	

Comments /notes on tonight's mission and this interpretation:

I started with the 07/26/2018 IR heat perimeter which was 11,659 acres. New heat perimeter is 44,450 acres – growth of 32,791 acres.

A lot of growth and intense heat on the east side of the fire with a large area that crossed Lake Redding in the dam location with heat polygons and isolated heat sources spotting outside the main fire perimeter. There was a heat polygon that was near Boulder Creek in section 23.

Where intense heat was not mapped, there was scattered heat throughout heat polygon.



INFRARED INTERPRETER'S DAILY LOG

--