

122°45'W

122°40'W

122°35'W

122°30'W

122°25'W

122°20'W

122°15'W

40°45'N

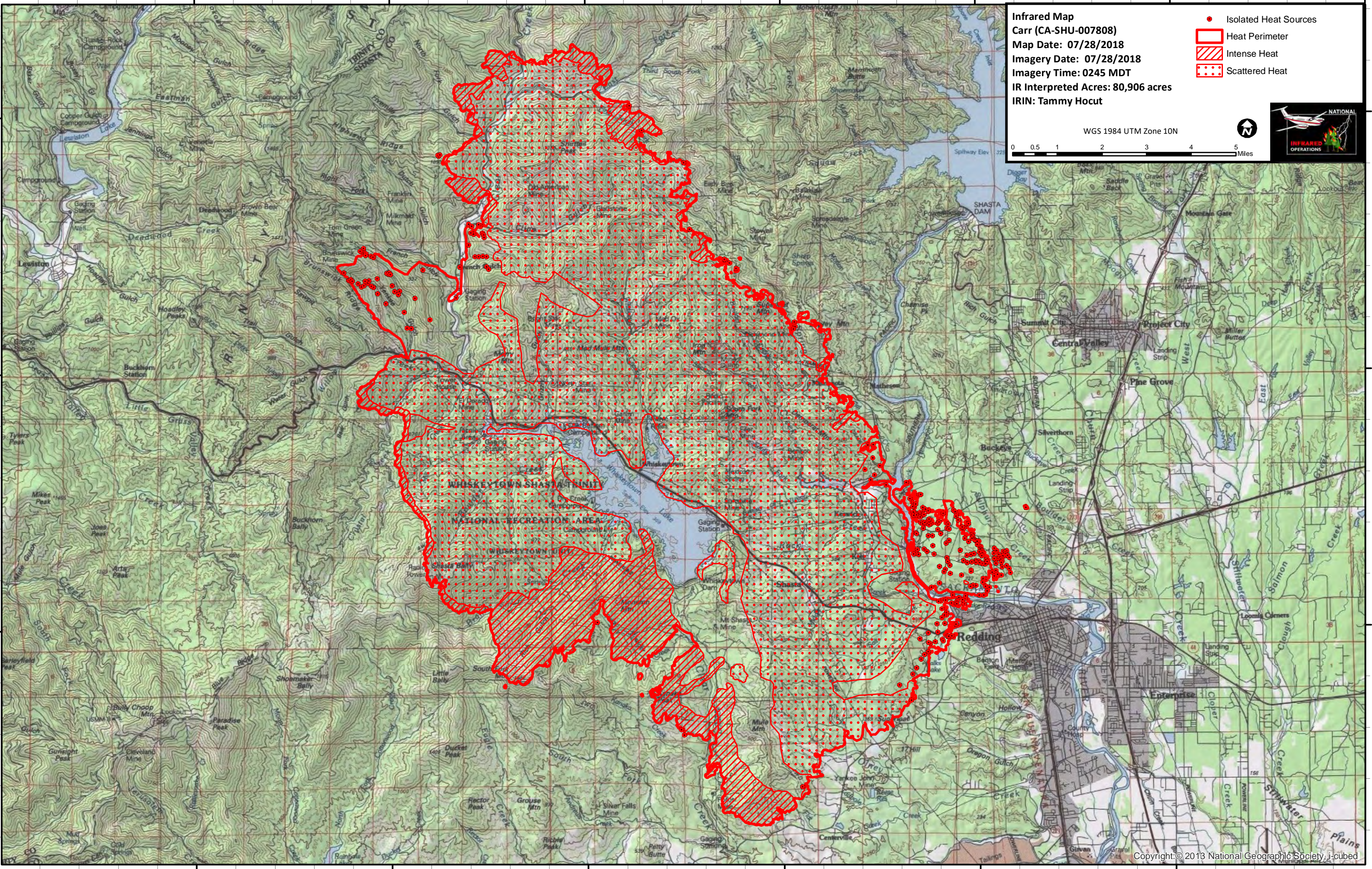
40°40'N

40°35'N

40°45'N

40°40'N

40°35'N



Infrared Map
 Carr (CA-SHU-007808)
 Map Date: 07/28/2018
 Imagery Date: 07/28/2018
 Imagery Time: 0245 MDT
 IR Interpreted Acres: 80,906 acres
 IRIN: Tammy Hocut

- Isolated Heat Sources
- Heat Perimeter
- Intense Heat
- Scattered Heat

WGS 1984 UTM Zone 10N

0 0.5 1 2 3 4 5 Miles

