

INFRARED INTERPRETER'S DAILY LOG

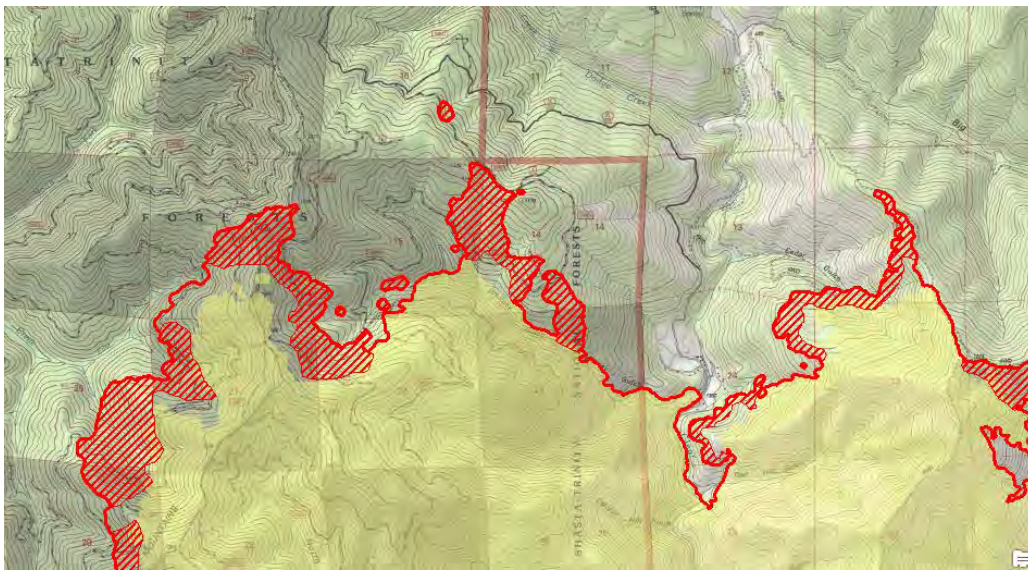
Incident Name: Carr CA-SHU-007808	IR Interpreter(s): Tammy Hocut thocut@fs.fed.us	Local Dispatch Phone: 530-225-2411	Interpreted Size: 112,888 Acres Growth: 9,116 Acres
Flight Time: 2135 (MDT) Flight Date: 07/30/2018	Interpreter(s) location: Jasper, AR Interpreter(s) Phone: 870-446-5878 (landline) 870-365-2810 (cell)	GACC IR Liaison: Kyle Felker GACC IR Liaison Phone: 530-251-6112	National Coordinator: Tom Mellin National Coord. Phone: 505-301-8167
Ordered By: Rob DeCamp: SITL 619-507-7405 Rdecamp@ncfire.org	A Number: A-181	Aircraft/Scanner System: N144Z / Phoenix	Pilots/Techs: Boyce/Johnson/Mike Mann
IRIN Comments on imagery: 3 passes, Ortho and Color flown in a north-south direction.		Weather at time of flight: Clear	Flight Objective: Identify and map Heat perimeter, Scattered Heat and Isolated Heat Sources.
Date and Time Imagery Received by Interpreter: 07/30/2018 – 2242 (MDT)		Type of media for final product: Shape files, KMZ, PDF, and IRIN Log	
Date and Time Products Delivered to Incident: 07/31/2018 – 0045 (MDT)		Digital files sent to: NIFC FTP @ https://ftp.nifc.gov/public/incident_specific_data/calif_n!/CALFIRE/2018_Incidents/CA-SHU-007808_Carr/IR/20180731/	

Comments /notes on tonight's mission and this interpretation:

I started my interpretation with the 07/30/2018 IR heat perimeter. New growth – 9,116 acres. The fire grew both to the north west and to the south. The entire fire had some level of scattered heat.

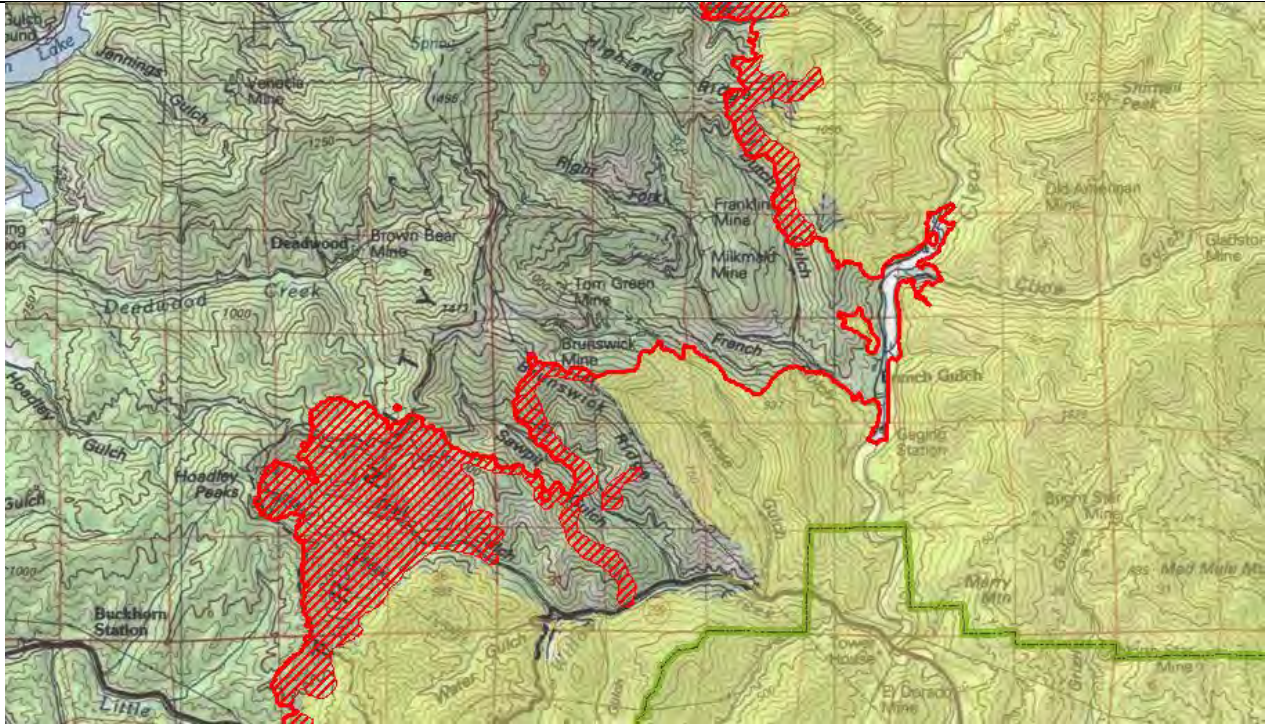
Yellow is 7/30/2018's IR heat perimeter. Red line is current IR heat perimeter.

Northern growth – Fire has intense heat with multiple heat polygons outside the main heat perimeter in sections 10, 14, and 15 with intense heat all along this new growth.

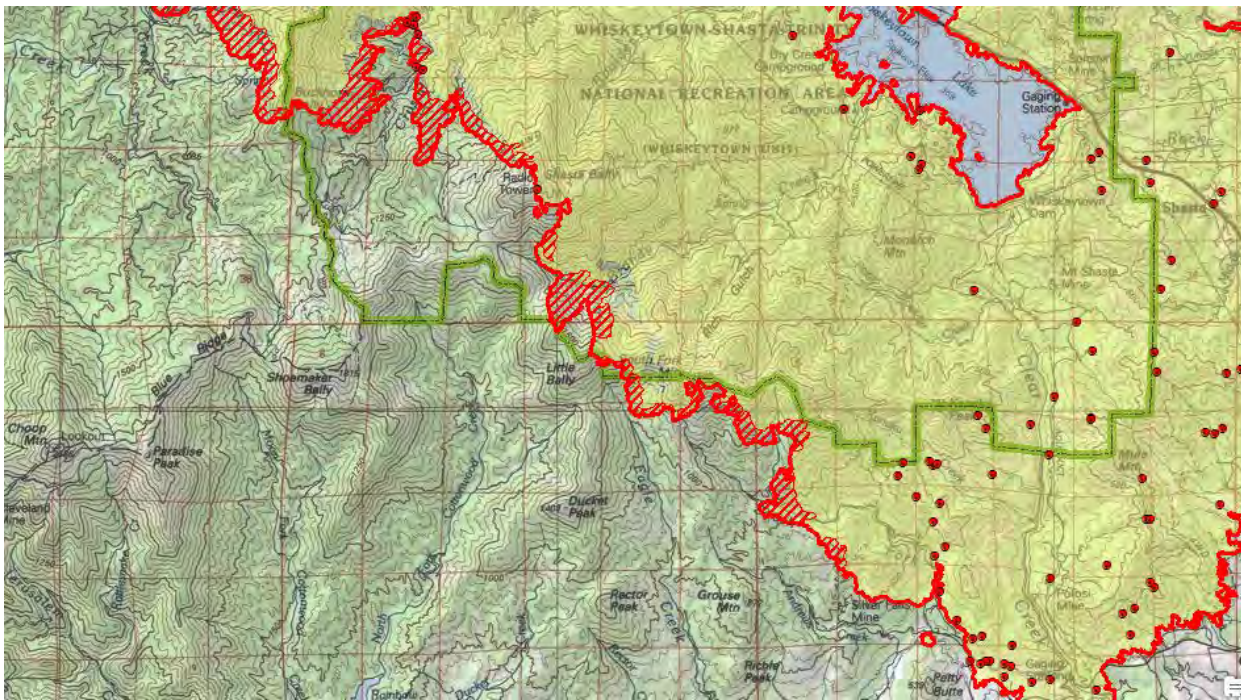


Western growth – New growth with intense heat along Dutch Gulch. Also a larger new intensive heat growth to the west to the Hoadley Peaks area along Sawpit Gulch.

INFRARED INTERPRETER'S DAILY LOG

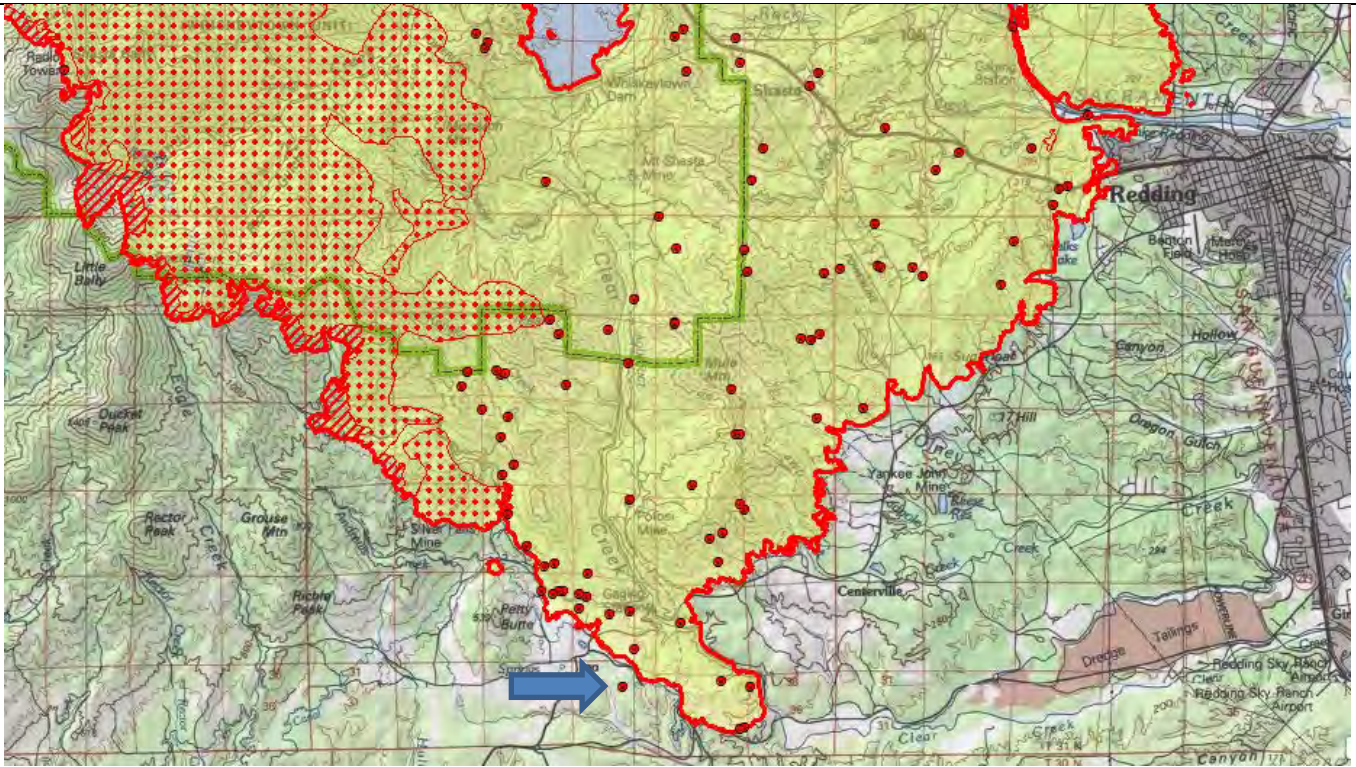


South growth – New growth with a narrow line of intense heat from Little Grass Valley Creek down to the Andrews Creek area to the south and Silver Falls Mine.



Light isolated heat sources mainly on the south part of the fire. One isolated heat source at $122^{\circ}31'55.722''\text{W}$ $40^{\circ}29'57.93''\text{N}$ was outside the main heat perimeter. When looking at it on a photo, it is a residence – I went ahead and mapped this one as a precaution.

INFRARED INTERPRETER'S DAILY LOG



Eastern growth – Light isolated heat sources on the eastern part of the fire with a small amount of growth in the Copley Mtn. area.

INFRARED INTERPRETER'S DAILY LOG

