

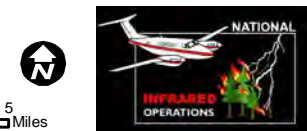
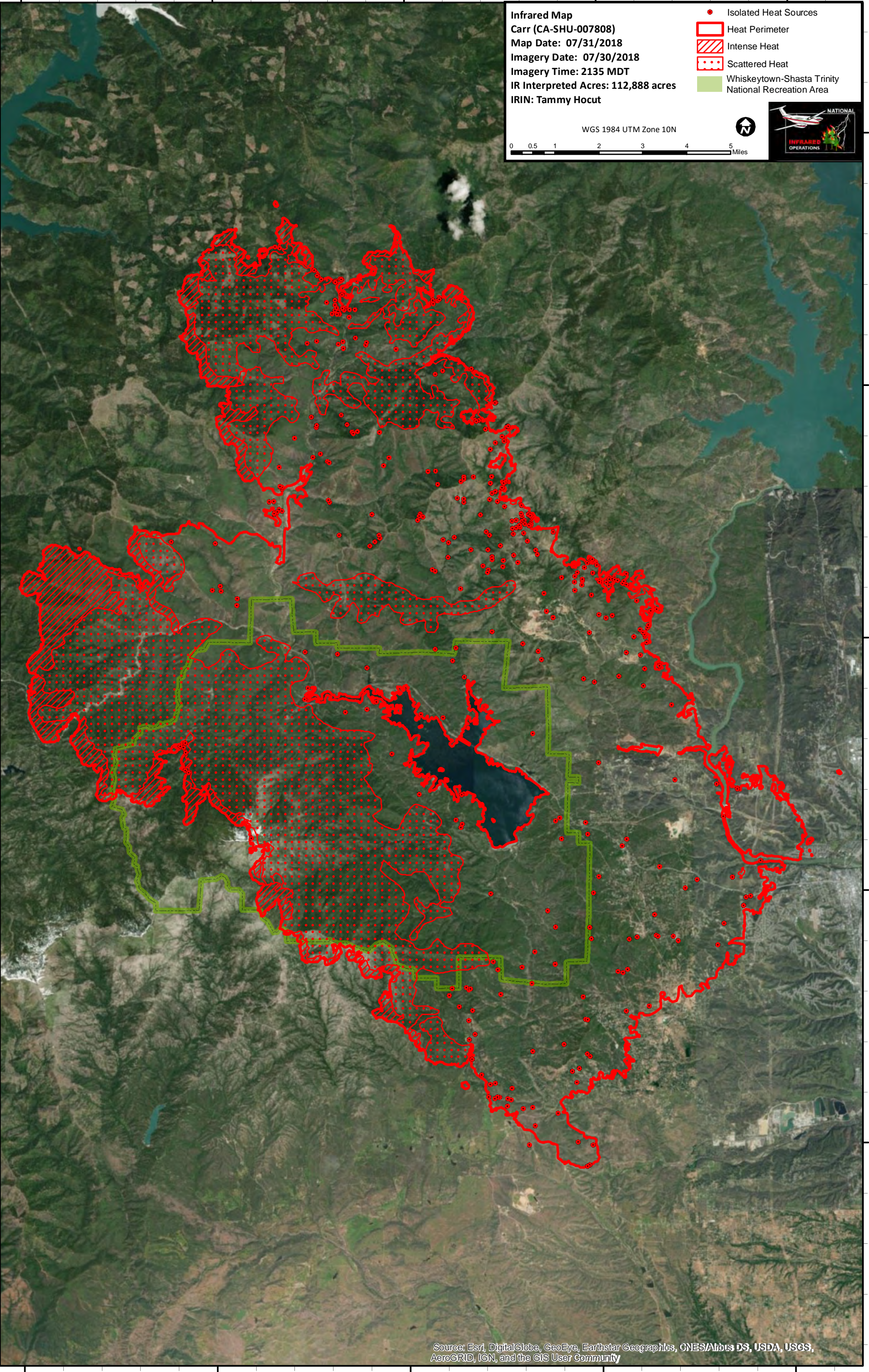
122°45'W 122°40'W 122°35'W 122°30'W 122°25'W

Infrared Map
Carr (CA-SHU-007808)
Map Date: 07/31/2018
Imagery Date: 07/30/2018
Imagery Time: 2135 MDT
IR Interpreted Acres: 112,888 acres
IRIN: Tammy Hocut

- Isolated Heat Sources
- Heat Perimeter
- Intense Heat
- Scattered Heat
- Whiskeytown-Shasta Trinity National Recreation Area

WGS 1984 UTM Zone 10N

0 0.5 1 2 3 4 5 Miles

122°45'W 122°40'W 122°35'W 122°30'W 122°25'W

Source: Esri, DigitalGlobe, GeoEye, Earthstar Geographics, CNES/Airbus DS, USDA, USGS, AeroGRID, IGN, and the GIS User Community