

INFRARED INTERPRETER'S DAILY LOG

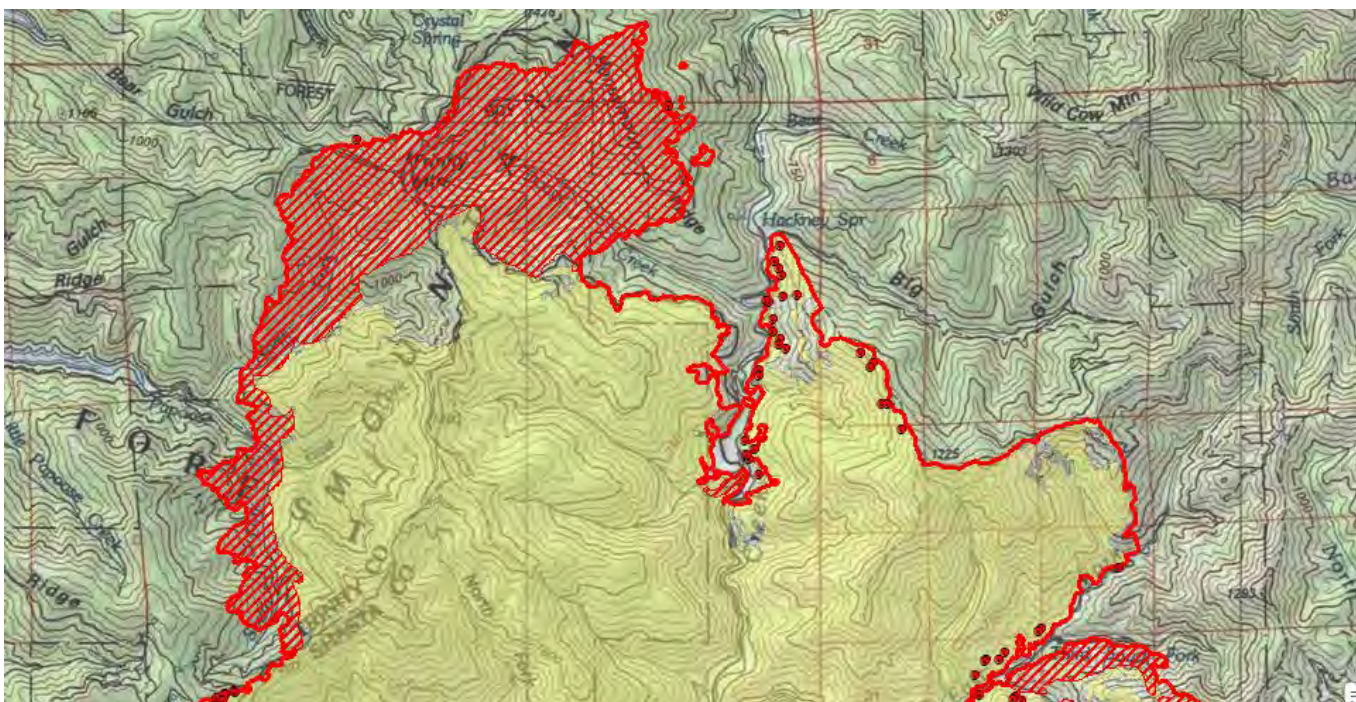
Incident Name: Carr CA-SHU-007808	IR Interpreter(s): Tammy Hocut thocut@fs.fed.us	Local Dispatch Phone: 530-225-2411	Interpreted Size: 145,015 Acres Growth: 13,119 Acres
Flight Time: 2217 (MDT) Flight Date: 08/03/2018	Interpreter(s) location: Jasper, AR Interpreter(s) Phone: 870-446-5878 (landline) 870-365-2810 (cell)	GACC IR Liaison: Kyle Felker GACC IR Liaison Phone: 530-251-6112	National Coordinator: Tom Mellin National Coord. Phone: 505-301-8167
Ordered By: Rob DeCamp: SITL 619-507-7405 Rdecamp@ncfire.org	A Number: A-276	Aircraft/Scanner System: N144Z / Phoenix	Pilots/Techs: Boyce/Netcher/Bayock
IRIN Comments on imagery: 5 passes, Ortho and Color flown in a east-west direction.		Weather at time of flight: Clear	Flight Objective: Identify and map Heat perimeter, Scattered Heat and Isolated Heat Sources.
Date and Time Imagery Received by Interpreter: 08/03/2018 – 2322 (MDT)		Type of media for final product: Shape files, KMZ, PDF, and IRIN Log	
Date and Time Products Delivered to Incident: 08/04/2018 – 0123 (MDT)		Digital files sent to: NIFC FTP @ https://ftp.nifc.gov/public/incident_specific_data/calif_n!/CALF/IRE/2018_Incidents/CA-SHU-007808_Carr/IR/20180804/	

Comments /notes on tonight's mission and this interpretation:

I started my interpretation with the 08/03/2018 fire perimeter provided by the incident. New growth – 13,119 acres. The fire grew mainly to the north, west and south

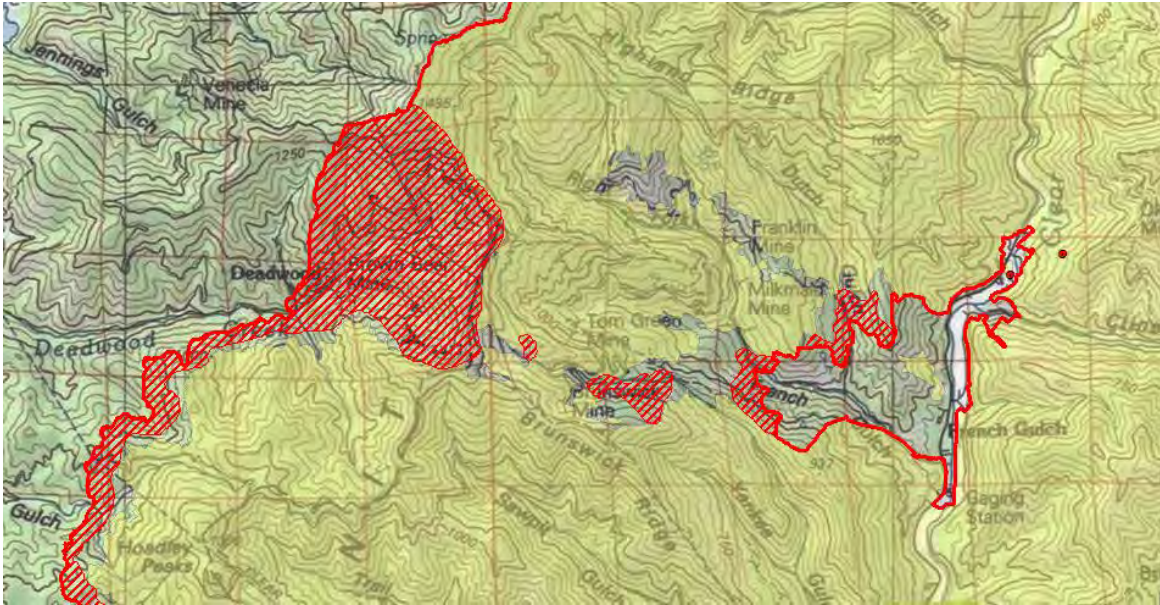
Yellow is 8/03/2018's IR heat perimeter. Red line is current IR heat perimeter.

Northern growth: Intense heat and growth with heat polygons outside the main fire perimeter in the Honeymoon Ridge area and Trinity Mountain on around to the northwest. The fire has now gone west of the North Fork and South Fork.

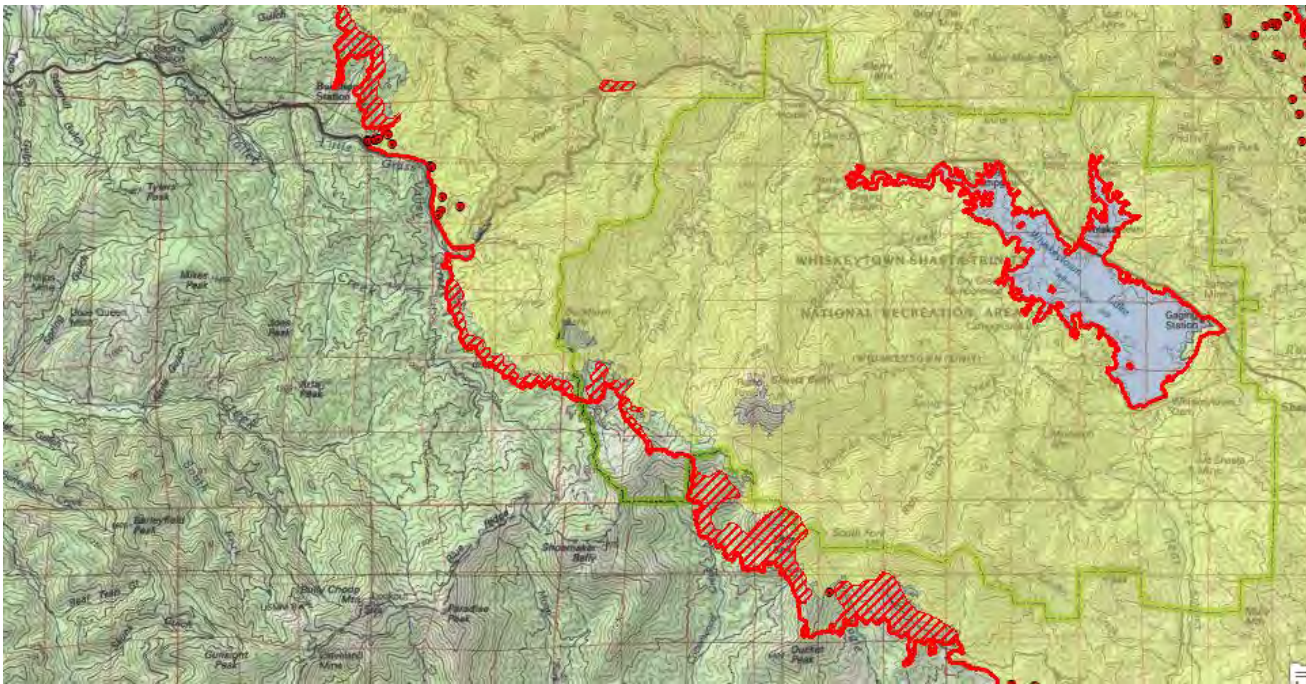


INFRARED INTERPRETER'S DAILY LOG

Western growth – the fire has intense heat and has moved past the Brown Bear Mine area and Deadwood west of Thorne Gulch. The unburned interior island along French Gulch has filled in about half with heat on the west side of the unburned island.

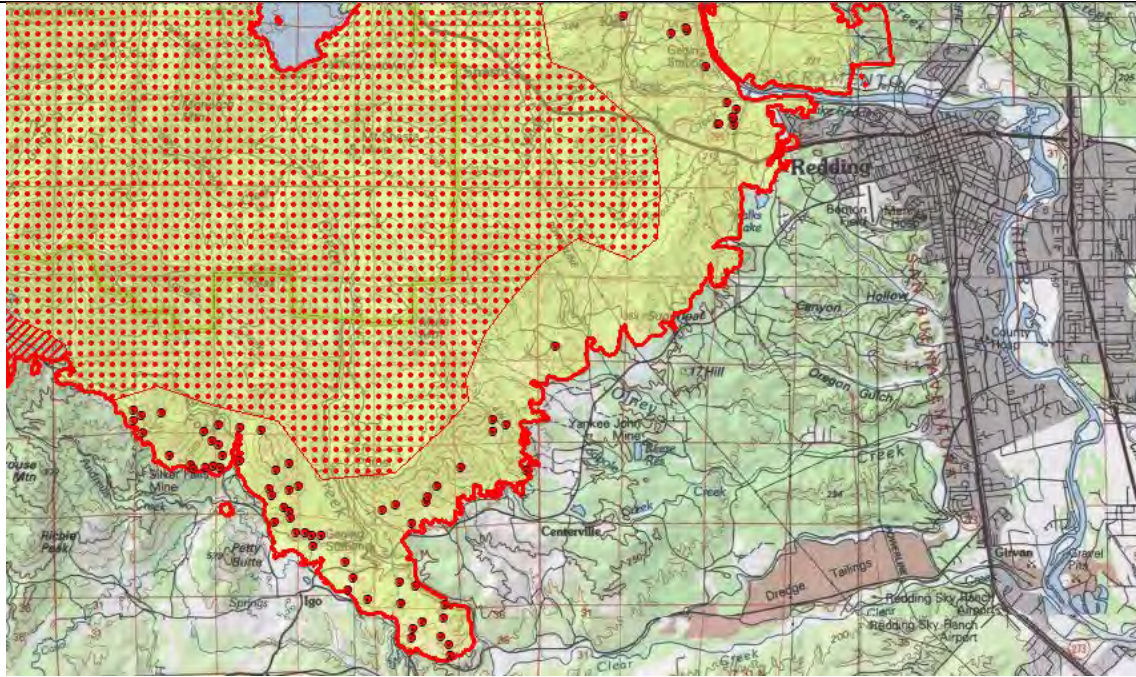


There is growth and intense heat from the Buckhorn Station area south all the way south to the Ducket Peak area.

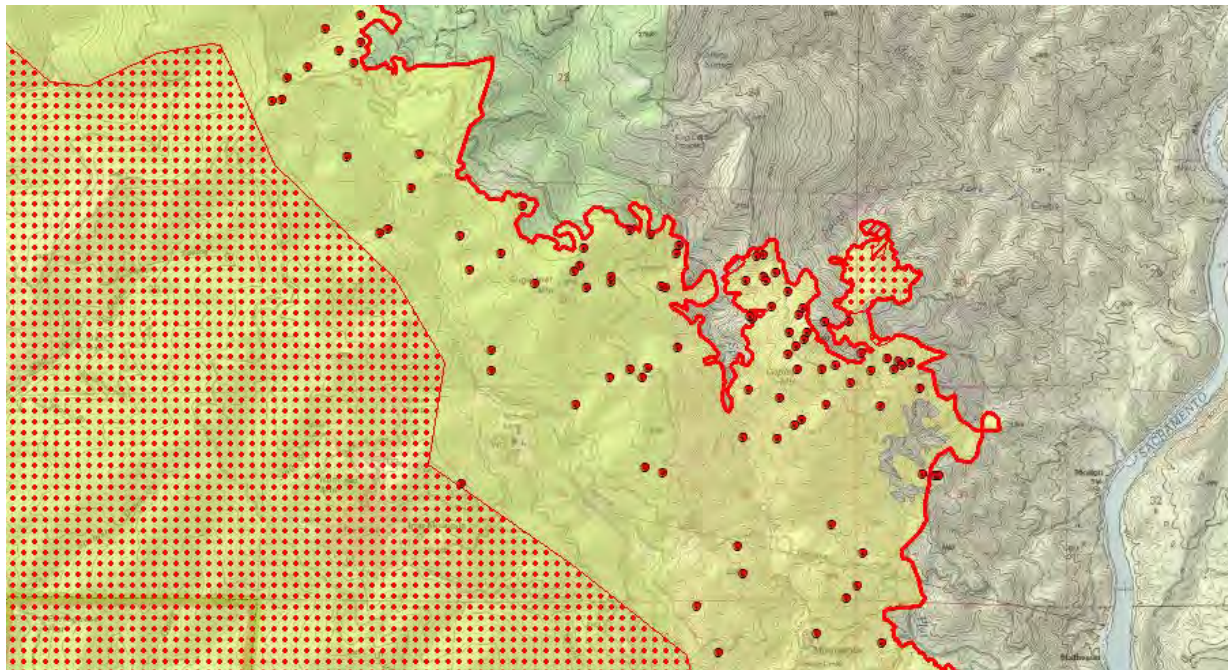


Southern growth – The south end of the fire is mostly light isolated heat sources and scattered heat within the main heat perimeter.

INFRARED INTERPRETER'S DAILY LOG

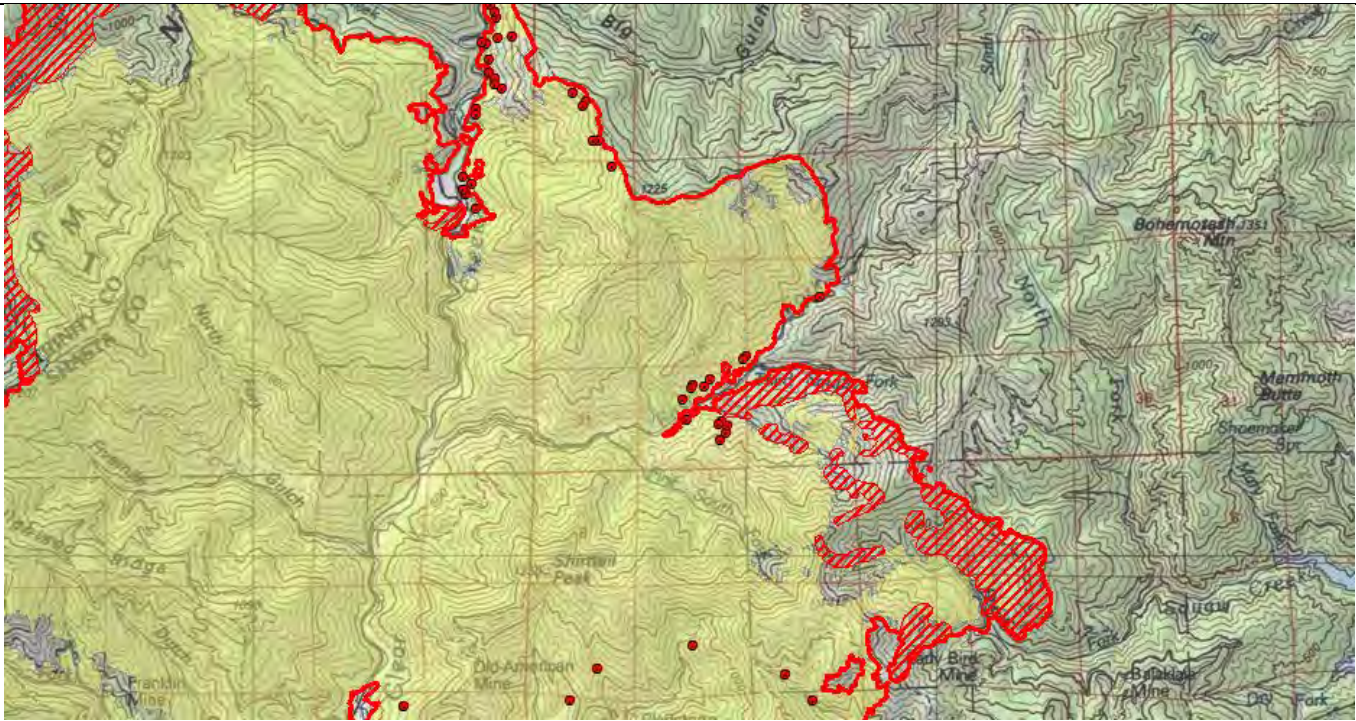


Eastern growth – the east side of the fire is mainly light isolated heat sources and scattered heat within the main heat perimeter. There is a small amount of growth north of Copley Mountain and south of the South Fork Creek



Northeast growth – there is intense heat and growth north of the Early Bird Mine up to the Third South Fork area.

INFRARED INTERPRETER'S DAILY LOG



The interior of the fire is covered mostly with scattered heat.

