

122°45'W

122°40'W

122°35'W

122°30'W

122°25'W

40°55'N

40°55'N

40°50'N

40°50'N

40°45'N

40°45'N

40°40'N

40°40'N

40°35'N

40°35'N

40°30'N

40°30'N

40°25'N

40°25'N

122°45'W

122°40'W

122°35'W

122°30'W

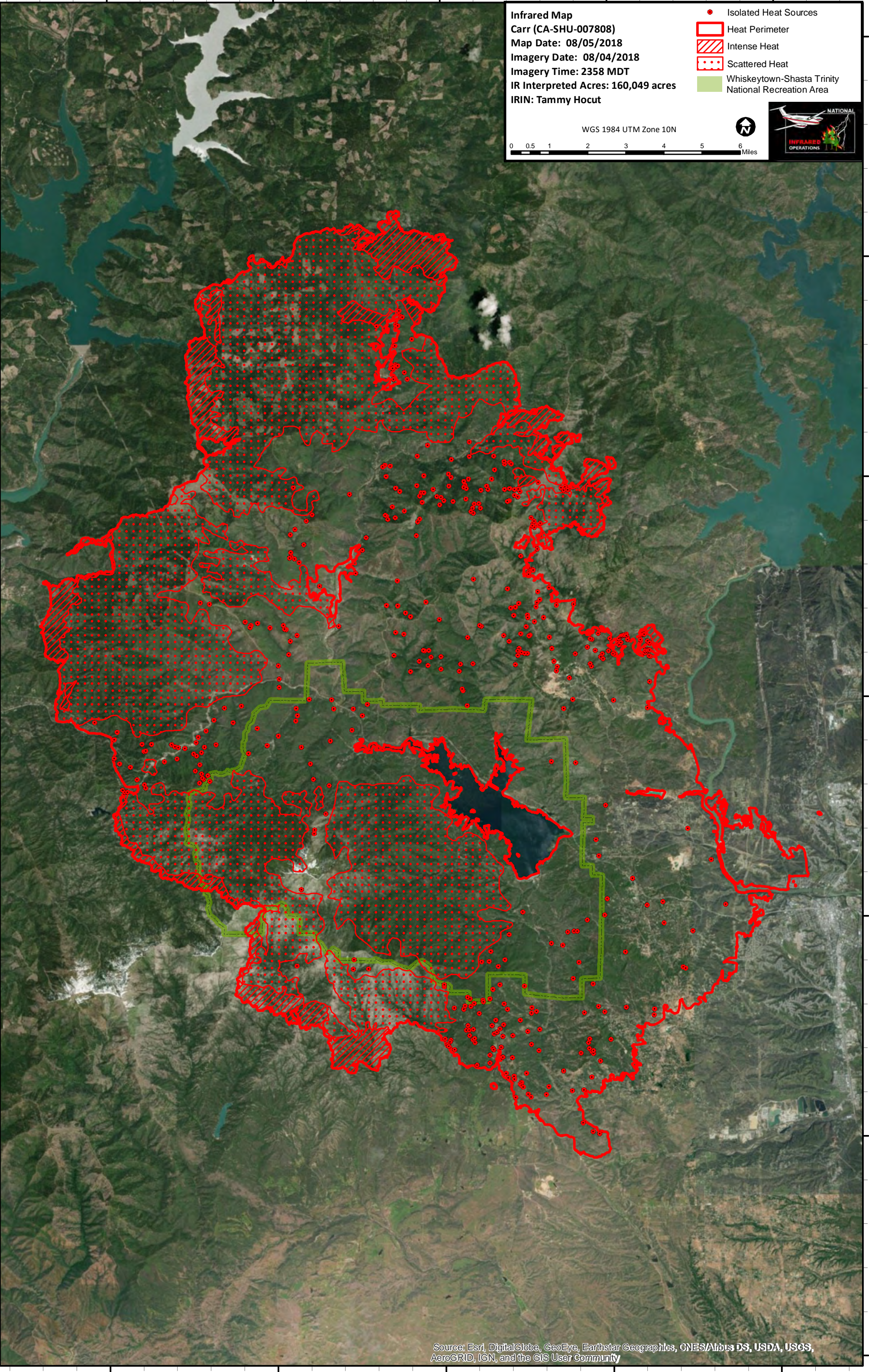
122°25'W

Infrared Map
Carr (CA-SHU-007808)
Map Date: 08/05/2018
Imagery Date: 08/04/2018
Imagery Time: 2358 MDT
IR Interpreted Acres: 160,049 acres
IRIN: Tammy Hocut

- Isolated Heat Sources
- Heat Perimeter
- Intense Heat
- Scattered Heat
- Whiskeytown-Shasta Trinity National Recreation Area

WGS 1984 UTM Zone 10N

0 0.5 1 2 3 4 5 6 Miles



Source: Esri, DigitalGlobe, GeoEye, Earthstar Geographics, CNES/Airbus DS, USDA, USGS, AeroGRID, IGN, and the GIS User Community