

## INFRARED INTERPRETER'S DAILY LOG

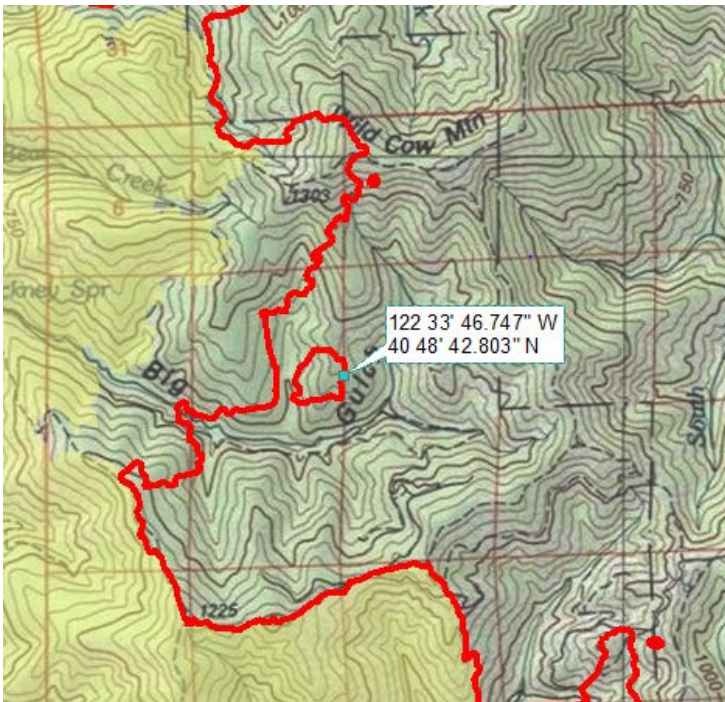
<b>Incident Name:</b> Carr CA-SHU-007808	<b>IR Interpreter(s):</b> Tina Rotenbury trotenbury@fs.fed.us	<b>Local Dispatch Phone:</b> 530-225-2411	<b>Interpreted Size:</b> 172,055 Acres <b>Growth:</b> 7,642 Acres
<b>Flight Time:</b> 0039 (MDT) <b>Flight Date:</b> 08/07/2018	<b>Interpreter(s) location:</b> Russellville, AR <b>Interpreter(s) Phone:</b> 479-967-8681 (landline) 479-886-0878 (cell)	<b>GACC IR Liaison:</b> Kyle Felker <b>GACC IR Liaison Phone:</b> 530-251-6112	<b>National Coordinator:</b> Tom Mellin <b>National Coord. Phone:</b> 505-301-8167
<b>Ordered By:</b> Rob DeCamp: SITL 619-507-7405 Rdecamp@ncfire.org	<b>A Number:</b> A-321	<b>Aircraft/Scanner System:</b> N144Z / Phoenix	<b>Pilots/Techs:</b> Boyce/Netcher/Bayock
<b>IRIN Comments on imagery:</b> 4 passes, Ortho and Color flown in a south-north direction.		<b>Weather at time of flight:</b> Clear	<b>Flight Objective:</b> Identify and map Heat perimeter, Scattered Heat and Isolated Heat Sources.
<b>Date and Time Imagery Received by Interpreter:</b> 08/07/2018 – 0125 (MDT)		<b>Type of media for final product:</b> Shape files, KMZ, PDF, and IRIN Log	
<b>Date and Time Products Delivered to Incident:</b> 08/07/2018 –0525 (MDT)		<b>Digital files sent to: NIFC FTP @</b> <a href="https://ftp.nifc.gov/public/incident_specific_data/calif_n!/CALFIRE/2018_Incidents/CA-SHU-007808_Carr/IR/20180807/">https://ftp.nifc.gov/public/incident_specific_data/calif_n!/CALFIRE/2018_Incidents/CA-SHU-007808_Carr/IR/20180807/</a>	

**Comments /notes on tonight's mission and this interpretation:**

I started my interpretation with the 08/06/2018 fire perimeter provided by incident. New growth – 7,642 acres. The fire grew mainly to the north, northeast, and southwest. There was a small adjustment in the perimeter of ~5 acres from the preliminary perimeter sent earlier.

Yellow is 8/06/2018's IR heat perimeter. Red line is current IR heat perimeter.

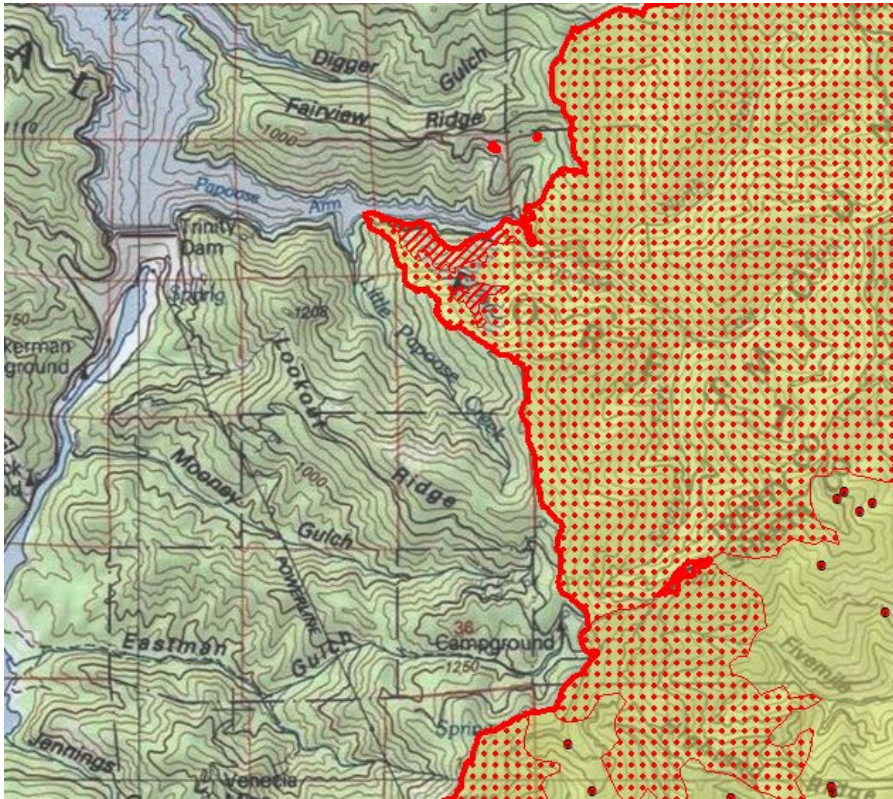
**North and northeast growth:** Fire continues to grow to the north. There is intense heat as well as scattered heat in this area. There is a 50 acre breakout perimeter just south of Wild Cow Mtn with intense heat.



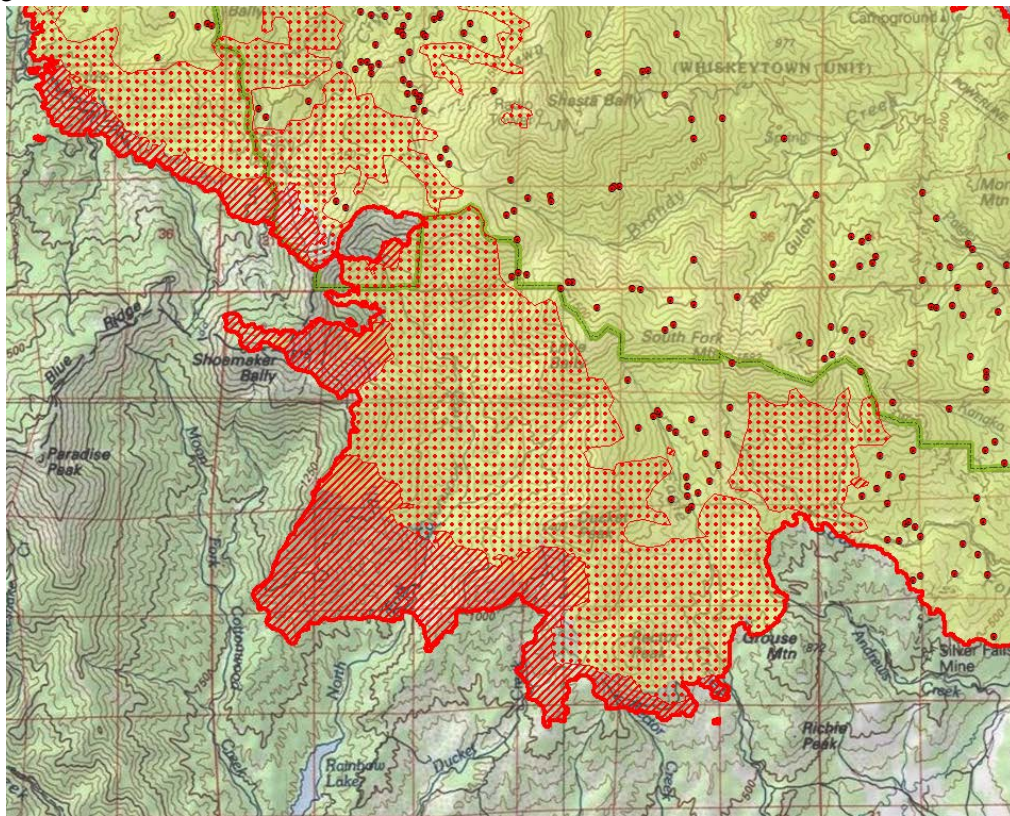


# INFRARED INTERPRETER'S DAILY LOG

**Western growth** – The fire is moving west with growth toward Papoose Arm and Trinity Dam



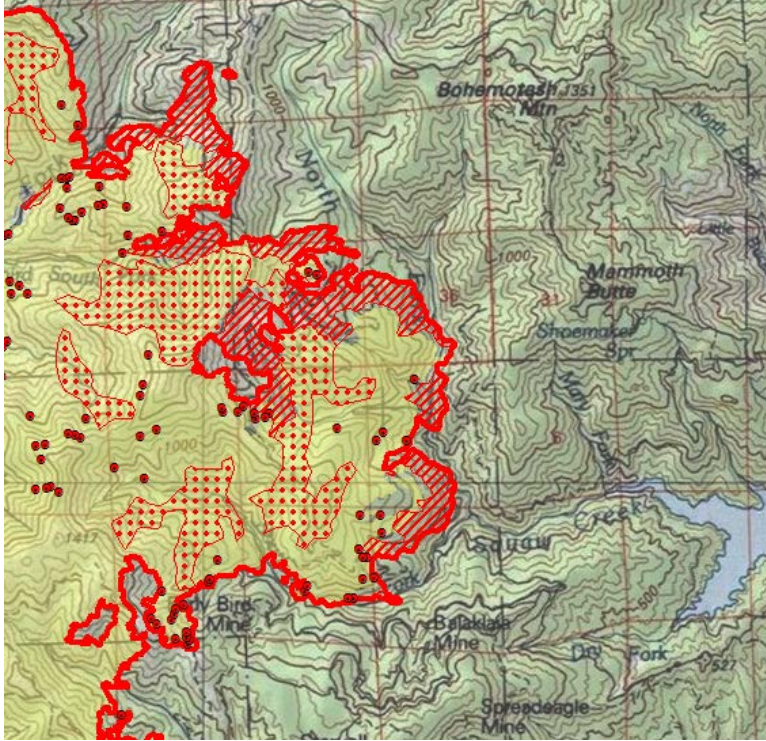
There is additional growth and intense/scattered heat on the Southwest side toward Rainbow Lake and Cottonwood Creek





## INFRARED INTERPRETER'S DAILY LOG

**Eastern Growth:** – The fire is moving east toward Mammoth Butte & north of Squaw Creek with intense heat and scattered heat. South East area of fire only had some isolated heat, no new growth.





# INFRARED INTERPRETER'S DAILY LOG

There is scattered and isolated heat throughout the interior of the fire.

