

INFRARED INTERPRETER'S DAILY LOG

Incident Name: Carr CA-SHU-007808	IR Interpreter(s): Tina Rotenbury trotenbury@fs.fed.us	Local Dispatch Phone: 530-225-2411	Interpreted Size: 176,069 Acres Growth: 4,014 Acres
Flight Time: 2359 (MDT) Flight Date: 08/07/2018	Interpreter(s) location: Russellville, AR Interpreter(s) Phone: 479-967-8681 (landline) 479-886-0878 (cell)	GACC IR Liaison: Kyle Felker GACC IR Liaison Phone: 530-251-6112	National Coordinator: Tom Mellin National Coord. Phone: 505-301-8167
Ordered By: Rob DeCamp: SITL 619-507-7405 Rdecamp@ncfire.org	A Number: A-349	Aircraft/Scanner System: N144Z / Phoenix	Pilots/Techs: Boyce/Netcher/Bayock
IRIN Comments on imagery: 4 passes, Ortho and Color flown in a north-south direction.		Weather at time of flight: Clear	Flight Objective: Identify and map Heat perimeter, Scattered Heat and Isolated Heat Sources.
Date and Time Imagery Received by Interpreter: 08/08/2018 – 0045 (MDT)		Type of media for final product: Shape files, KMZ, PDF, and IRIN Log	
Date and Time Products Delivered to Incident: 08/08/2018 –0530 (MDT)		Digital files sent to: NIFC FTP @ https://ftp.nifc.gov/public/incident_specific_data/calif_n!/CALFIRE/2018_Incidents/CA-SHU-007808_Carr/IR/20180808/	

Comments /notes on tonight's mission and this interpretation:

I started my interpretation with the 08/07/2018 fire perimeter provided by incident. New growth – 4,014 acres. The fire grew mainly to the north, northeast, and southwest.

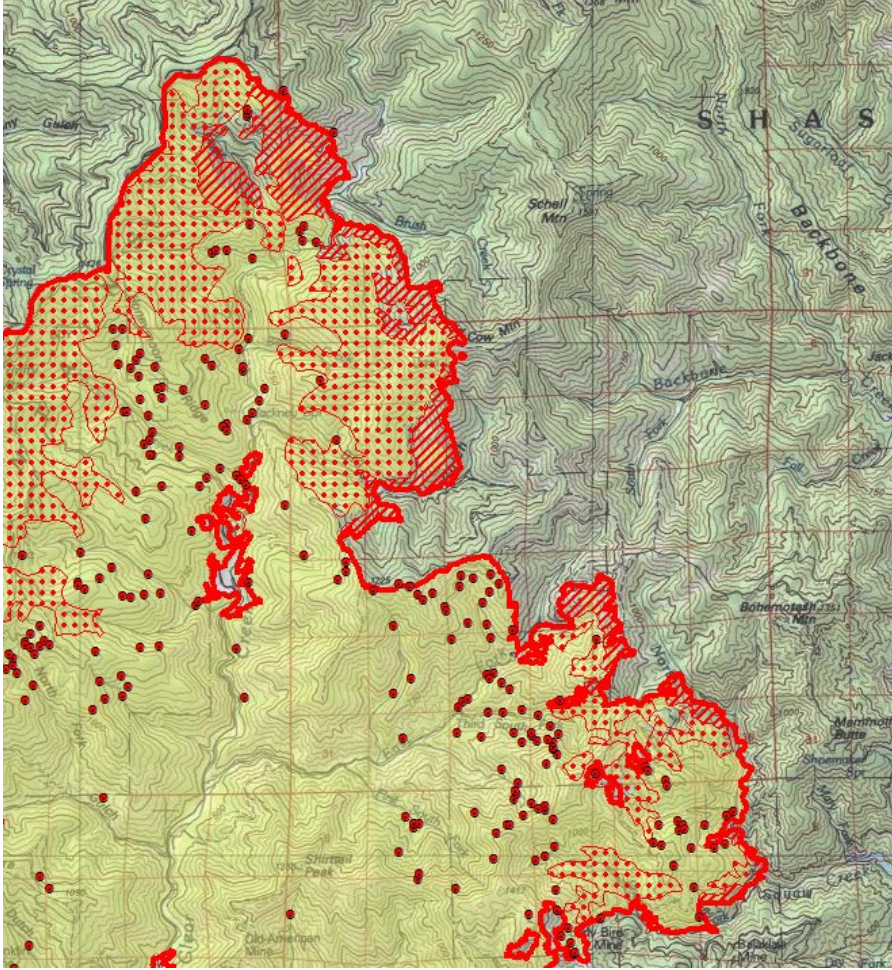
Yellow is 8/07/2018's IR heat perimeter. Red line is current IR heat perimeter.

Suspicious isolated heat sources along HWY 5 and Sacramento River north of Lake Shasta starting @ 122 23' 51.339" W 40 55' 1.503" N



INFRARED INTERPRETER'S DAILY LOG

North and northeast growth; in DIV M,N,O, P Fire continues to grow to the north and east. There is intense heat as well as scattered heat in this area and some isolated heat sources

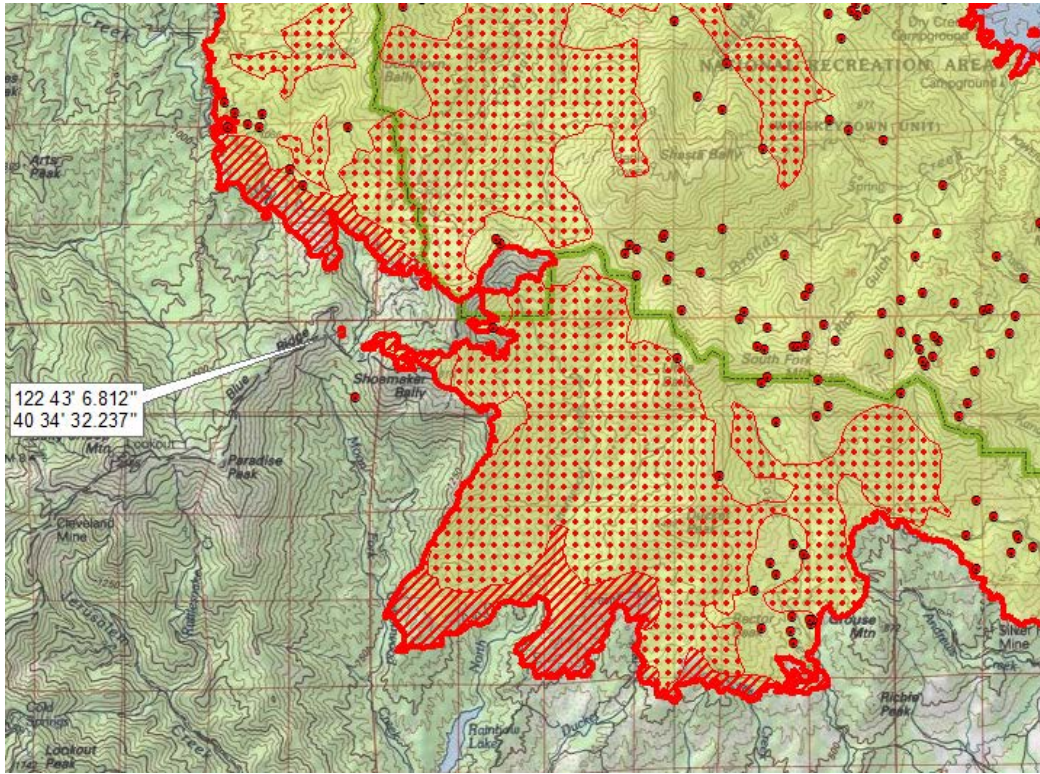


Western Perimeter – The fire is stable along the west with areas of Isolated heat and Scattered heat.

East / South Eastern Perimeter: – The fire has some growth east toward Mammoth Butte & north of Squaw Creek with intense heat and scattered heat. South East area of fire only had some isolated heat, no new growth. There were several isolated heat points in the community near houses/industrial areas of Redding, I did not map these points.

INFRARED INTERPRETER'S DAILY LOG

There is additional growth and intense/scattered heat on the Southwest side toward Rainbow Lake and Cottonwood Creek as expected. There is a small breakout polygon to the west along Blue Ridge see lat/long below.



INFRARED INTERPRETER'S DAILY LOG

There is scattered and isolated heat throughout the interior of the fire.

