

INFRARED INTERPRETER'S DAILY LOG

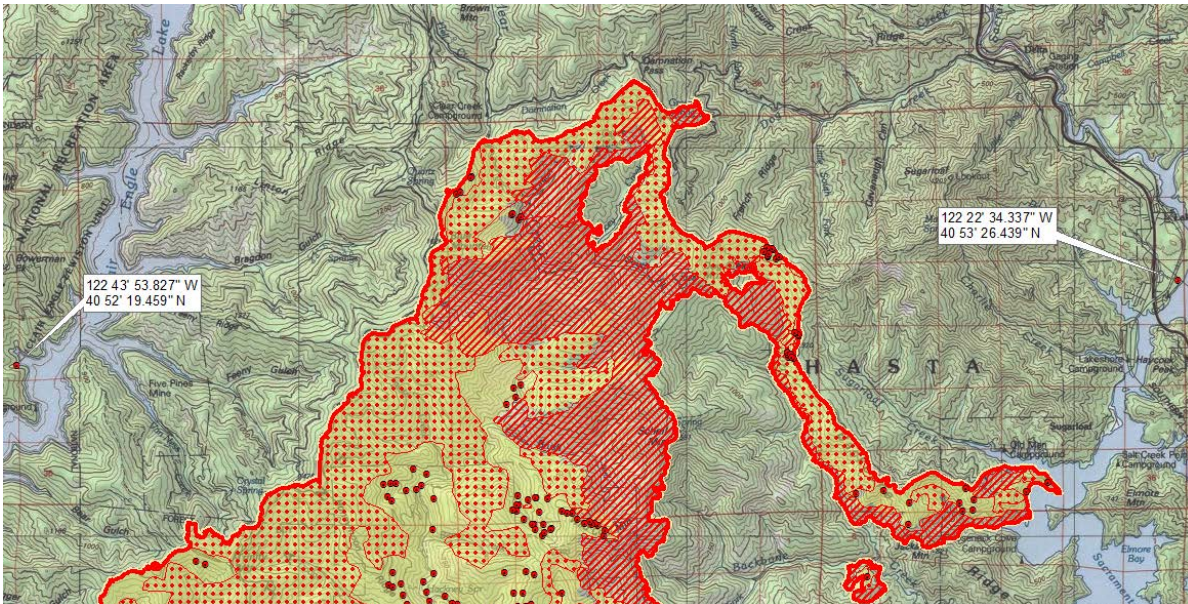
Incident Name: Carr CA-SHU-007808	IR Interpreter(s): Tina Rotenbury trotenbury@fs.fed.us	Local Dispatch Phone: 530-225-2411	Interpreted Size: 201,680 Acres Growth: 10,807 Acres
Flight Time: 2328 (MDT) Flight Date: 08/11/2018	Interpreter(s) location: Russellville, AR Interpreter(s) Phone: 479-967-8681 (landline) 479-886-0878 (cell)	GACC IR Liaison: Kyle Felker GACC IR Liaison Phone: 530-251-6112	National Coordinator: Jan Johnson National Coord. Phone: 208-387-5900 Cell 208-870-5066
Ordered By: Rob DeCamp: SITL 619-507-7405 Rdecamp@ncfire.org	A Number: A-369	Aircraft/Scanner System: N144Z / Phoenix	Pilots/Techs: Boyce/Netcher/Bayock
IRIN Comments on imagery: 4 passes, Ortho and Color flown in a north-south direction.		Weather at time of flight: Clear	Flight Objective: Identify and map Heat perimeter, Scattered Heat and Isolated Heat Sources.
Date and Time Imagery Received by Interpreter: 08/12/2018 – 0023 (MDT)		Type of media for final product: Shape files, KMZ, PDF, and IRIN Log	
Date and Time Products Delivered to Incident: 08/12/2018 – 0435 (MDT)		Digital files sent to: NIFC FTP @ https://ftp.nifc.gov/public/incident_specific_data/calif_n!/CALF/IRE/2018_Incidents/CA-SHU-007808_Carr/IR/20180812/	

Comments /notes on tonight's mission and this interpretation:

I started my interpretation with the 08/11/2018 fire perimeter provided by incident. New growth – 10,807 acres. The fire grew mainly to the north and northeast.

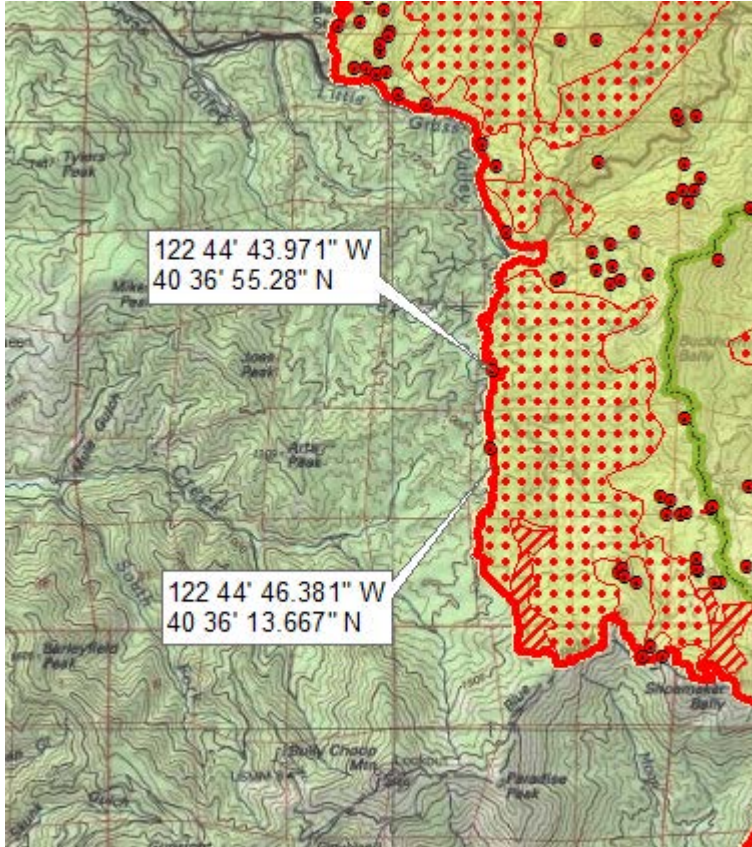
Yellow is 8/11/2018's IR heat perimeter. Red line is current IR heat perimeter.

North and northeast growth; in DIV M,N,O,P Fire continues to grow to the north and east. There is intense heat as well as scattered heat in this area and some isolated heat sources. Interior open polys have now closed up. Couple of isolated heat outside perimeter around the lakes, could be camp fires.



INFRARED INTERPRETER'S DAILY LOG

Western Perimeter – The fire is stable along the west with a lot of Isolated heat and Scattered heat. Two isolated heat sources in the 300' buffer.



East / South Eastern Perimeter: – Fire line was stable along this side. Showing quite a bit of isolated heat on the south again tonight. Seems to be more than last night.

There is a lot of scattered and isolated heat throughout the interior of the fire.

INFRARED INTERPRETER'S DAILY LOG

