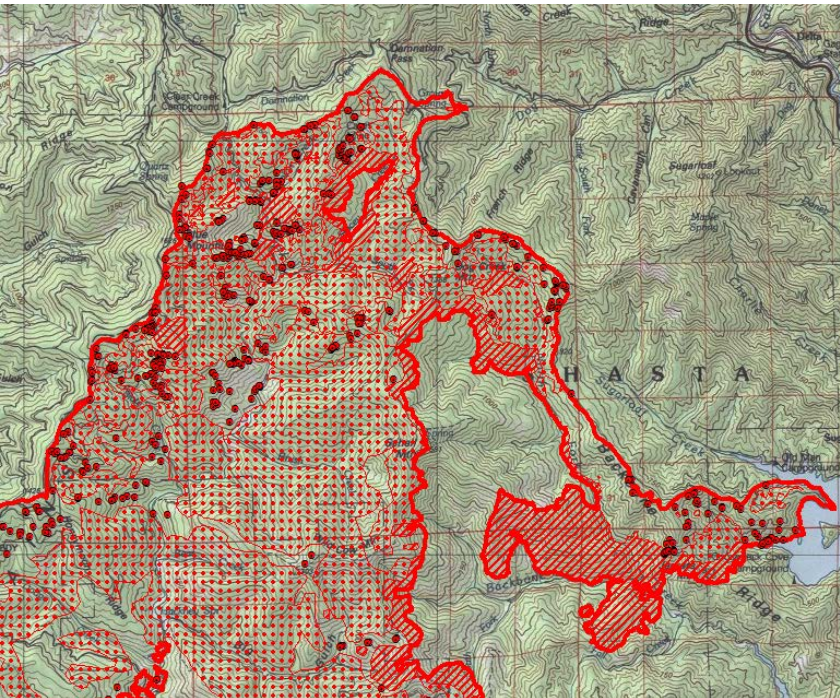
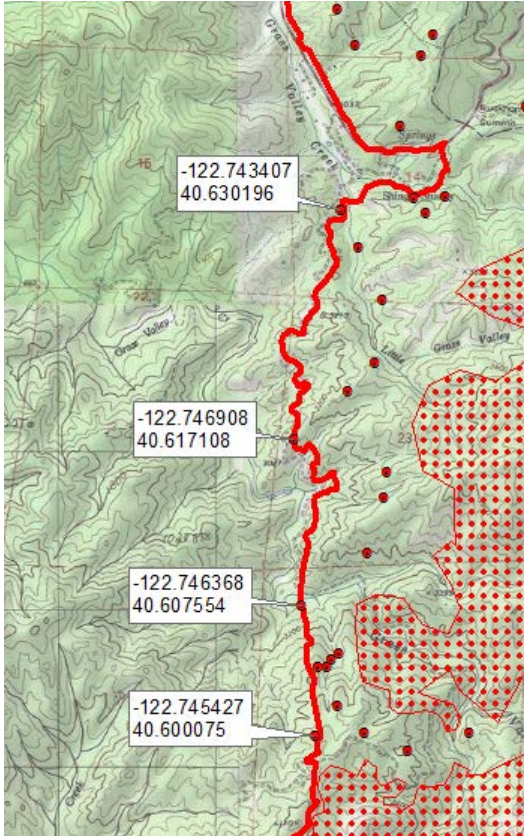


INFRARED INTERPRETER'S DAILY LOG

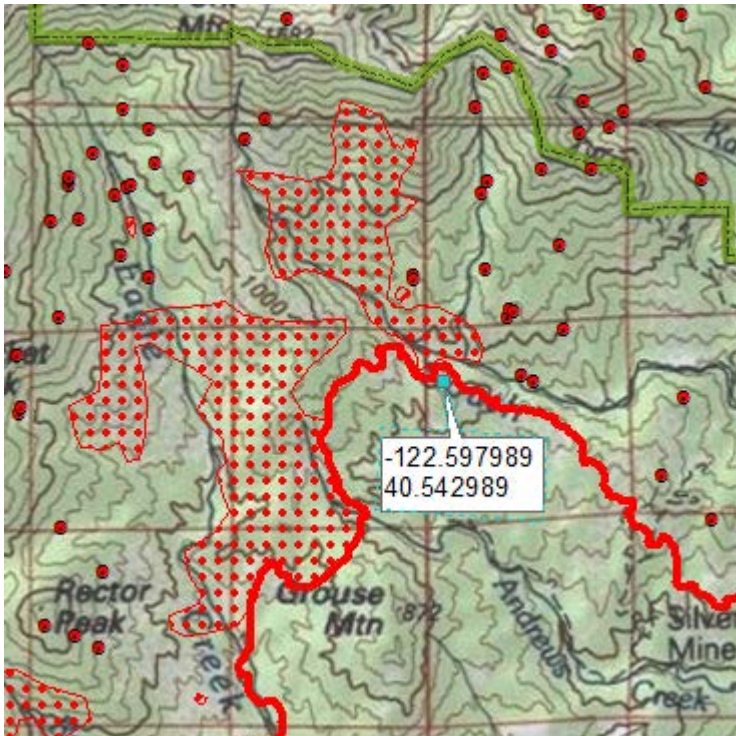
Incident Name: Carr CA-SHU-007808	IR Interpreter(s): Tina Rotenbury trotenbury@fs.fed.us	Local Dispatch Phone: 530-225-2411	Interpreted Size: 206,816 Acres Growth: 5,136 Acres
Flight Time: 2355 (MDT) Flight Date: 08/12/2018	Interpreter(s) location: Russellville, AR Interpreter(s) Phone: 479-967-8681 (landline) 479-886-0878 (cell)	GACC IR Liaison: Kyle Felker GACC IR Liaison Phone: 530-251-6112	National Coordinator: Jan Johnson National Coord. Phone: 208-387-5900 Cell 208-870-5066
Ordered By: Rob DeCamp: SITL 619-507-7405 Rdecamp@ncfire.org	A Number: A-376	Aircraft/Scanner System: N144Z / Phoenix	Pilots/Techs: Johnson/Ramsay/Bayock
IRIN Comments on imagery: 3 passes, Ortho and Color flown in a north-south direction.		Weather at time of flight: Clear	Flight Objective: Identify and map Heat perimeter, Scattered Heat and Isolated Heat Sources.
Date and Time Imagery Received by Interpreter: 08/13/2018 – 0023 (MDT)		Type of media for final product: Shape files, KMZ, PDF, and IRIN Log	
Date and Time Products Delivered to Incident: 08/13/2018 – 0410 (MDT)		Digital files sent to: NIFC FTP @ https://ftp.nifc.gov/public/incident_specific_data/calif_n/!CALF/IRE/2018_Incidents/CA-SHU-007808_Carr/IR/20180813/	
Comments /notes on tonight's mission and this interpretation: I started my interpretation with the 08/12/2018 fire perimeter provided by incident. New growth – 5,136 acres. The fire grew mainly to the north and northeast. Yellow is 8/12/2018's IR heat perimeter. Red line is current IR heat perimeter. North and northeast growth; in DIV M,N,O,P Fire continues to grow to the north and east. There is intense heat as well as scattered heat in this area and some isolated heat sources. Interior open polys have now closed up.			
 <p>The image is a topographic map of a region in California, specifically the Hastata area. It features contour lines indicating elevation. A large, irregular area is outlined in red, representing the current fire perimeter. Within and around this red boundary, there are numerous small red dots and clusters, representing heat sources identified from infrared imagery. The map also shows various geographical features like roads, rivers, and local landmarks. The word 'HASTATA' is printed across the middle of the map.</p>			

INFRARED INTERPRETER'S DAILY LOG

Western Perimeter – The fire is stable along the west with a lot of Isolated heat and Scattered heat. Several isolated heat sources outside perimeter.



East / South Eastern Perimeter: – Fire line was stable along this side. Showing quite a bit of isolated heat on the south again tonight. One isolated heat source outside line.



INFRARED INTERPRETER'S DAILY LOG

There is a lot of scattered and isolated heat throughout the interior of the fire.

