

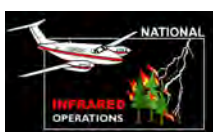
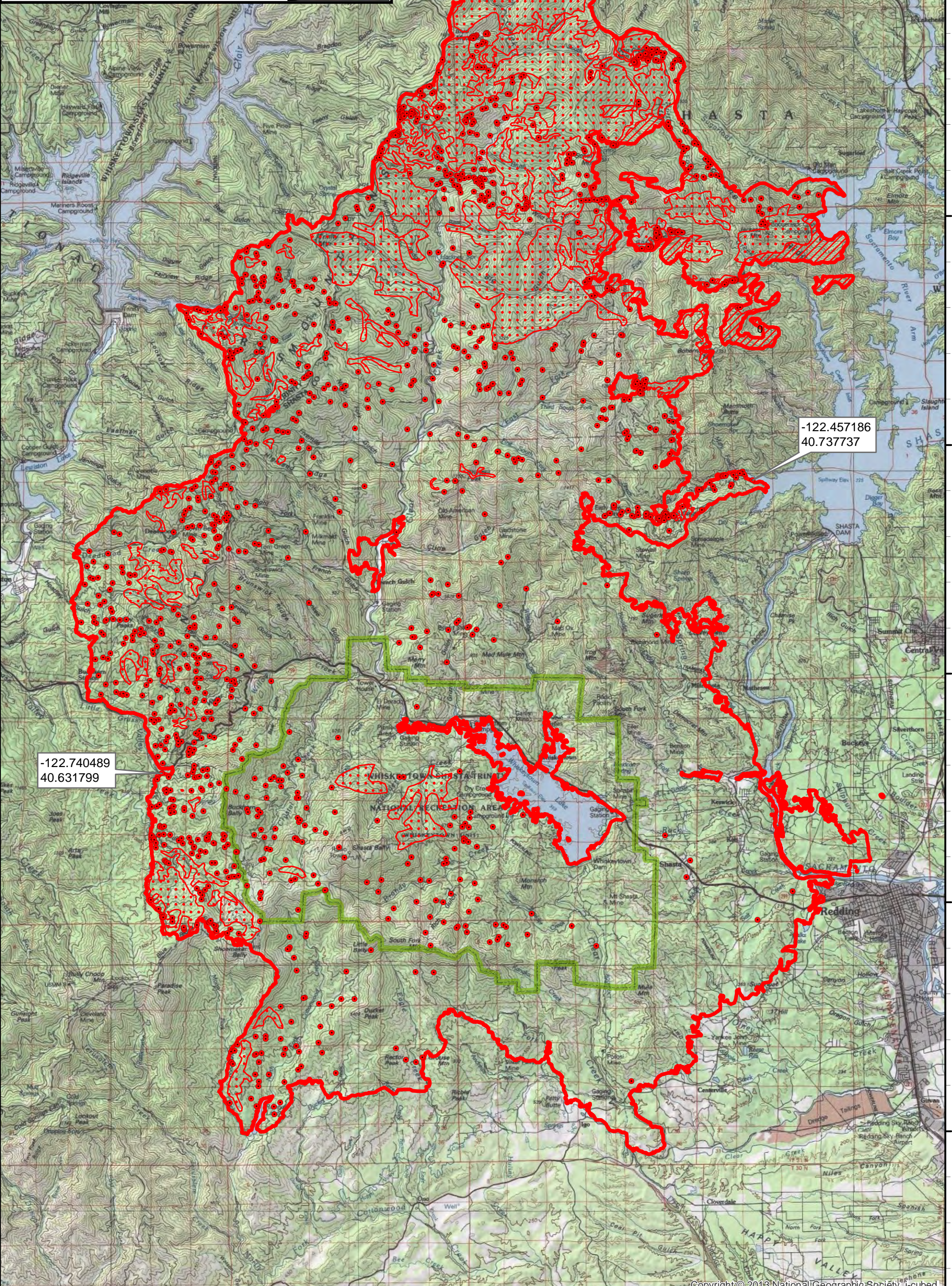
122°45'W 122°40'W 122°35'W 122°30'W 122°25'W

Infrared Map
Carr (CA-SHU-007808)
Map Date: 08/15/2018
Imagery Date: 08/14/2018
Imagery Time: 2235 MDT
IR Interpreted Acres: 214,527 acres
IRIN: Tina Rotenbury

- Isolated Heat Sources
- Heat Perimeter
- Intense Heat
- Scattered Heat
- Whiskeytown-Shasta Trinity National Recreation Area

WGS 1984 UTM Zone 10N

0 0.5 1 2 3 4 5 6 Miles

-122.740489
40.631799

-122.457186
40.737737

122°45'W 122°40'W 122°35'W 122°30'W 122°25'W