

## INFRARED INTERPRETER'S DAILY LOG

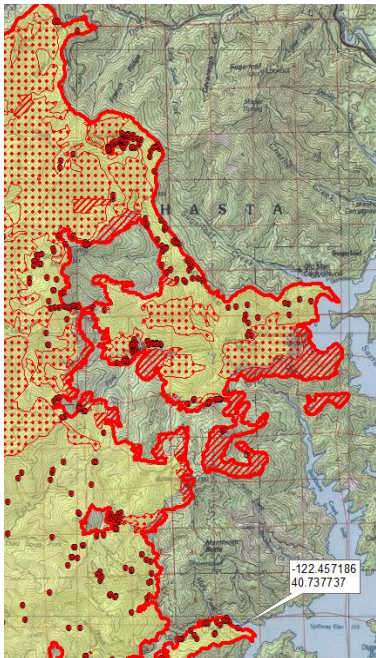
<b>Incident Name:</b> Carr CA-SHU-007808	<b>IR Interpreter(s):</b> Tina Rotenbury trotenbury@fs.fed.us	<b>Local Dispatch Phone:</b> 530-225-2411	<b>Interpreted Size:</b> 214,527 Acres <b>Growth:</b> 3,508 Acres
<b>Flight Time:</b> 2235 (MDT) <b>Flight Date:</b> 08/14/2018	<b>Interpreter(s) location:</b> Russellville, AR <b>Interpreter(s) Phone:</b> 479-967-8681 (landline) 479-886-0878 (cell)	<b>GACC IR Liaison:</b> Kyle Felker <b>GACC IR Liaison Phone:</b> 530-251-6112	<b>National Coordinator:</b> Jan Johnson <b>National Coord. Phone:</b> 208-387-5900 Cell 208-870-5066
<b>Ordered By:</b> Rob DeCamp: SITL 619-507-7405 Rdecamp@ncfire.org	<b>A Number:</b> A-387	<b>Aircraft/Scanner System:</b> N144Z / Phoenix	<b>Pilots/Techs:</b> Johnson/Ramsay/Bayock
<b>IRIN Comments on imagery:</b> 3 passes, Ortho and Color flown in a north-south direction.		<b>Weather at time of flight:</b> Clear over the west Clouds over the NE & South	<b>Flight Objective:</b> Identify and map Heat perimeter, Scattered Heat and Isolated Heat Sources.
<b>Date and Time Imagery Received by Interpreter:</b> 08/14/2018 – 2310 (MDT)		<b>Type of media for final product:</b> Shape files, KMZ, PDF, and IRIN Log	
<b>Date and Time Products Delivered to Incident:</b> 08/15/2018 – 0309 (MDT)		<b>Digital files sent to: NIFC FTP @</b> <a href="https://ftp.nifc.gov/public/incident_specific_data/calif_n/!CALFIRE/2018_Incidents/CA-SHU-007808_Carr/IR/20180815/">https://ftp.nifc.gov/public/incident_specific_data/calif_n/!CALFIRE/2018_Incidents/CA-SHU-007808_Carr/IR/20180815/</a>	

**Comments /notes on tonight's mission and this interpretation:**

I started my interpretation with the 08/14/2018 fire perimeter provided by incident. New growth – 3,508 acres. The fire grew mainly to the north and northeast. Some cloud cover over the northeast and south portions of perimeter. Was able to see some heat in that area and mapped accordingly. Included cloud cover shape in zip.

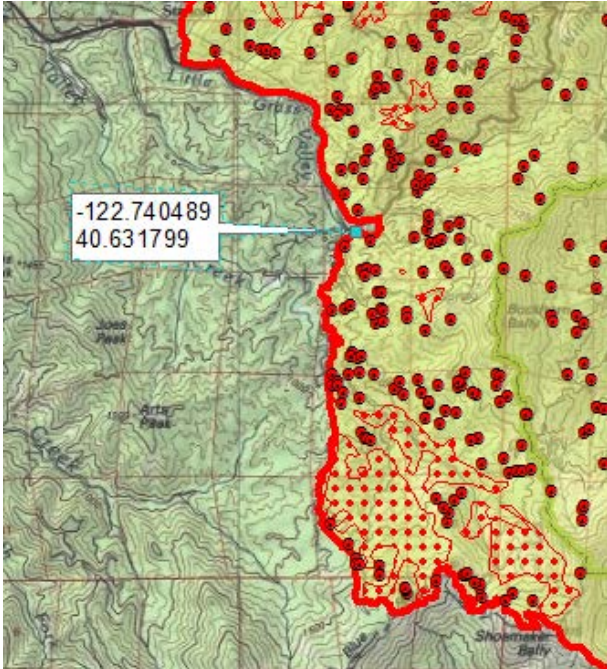
Yellow is 8/14/2018's IR heat perimeter. Red line is current IR heat perimeter.

**North and northeast growth; in DIV M,N,O,P** Fire continues to grow to the east. There is intense heat as well as scattered heat in this area and some isolated heat sources. One isolated heat sources outside perimeter on the east. This is where most of the clouds were for the evening.



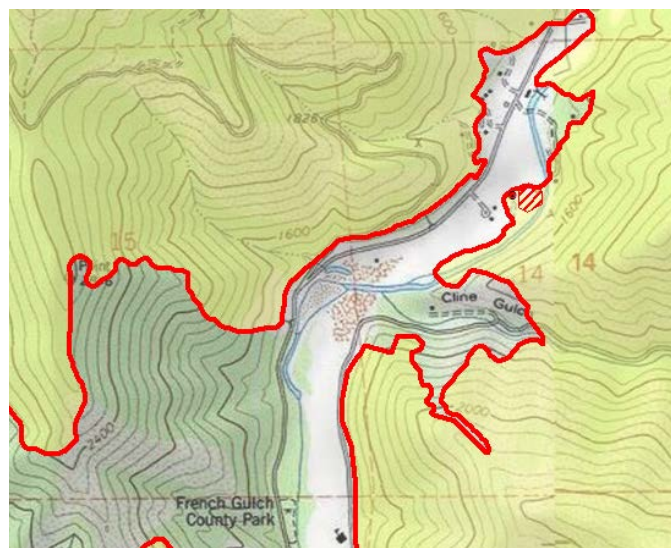
## INFRARED INTERPRETER'S DAILY LOG

**Western Perimeter** – The fire is stable along the west with a lot of Isolated heat and Scattered heat. One isolated heat source outside perimeter.



**East / South Eastern Perimeter:** – Fire line was stable along this side. Showing quite a bit of isolated and scattered heat on the south again tonight. Some cloud cover in this area tonight, but it appears to have cooled down a bit. No intense heat as previous nights.

Interior has small patch of intense heat and isolated heat source near perimeter around French Gulch Community



# INFRARED INTERPRETER'S DAILY LOG

There is a lot of scattered and isolated heat throughout the interior of the fire.

