
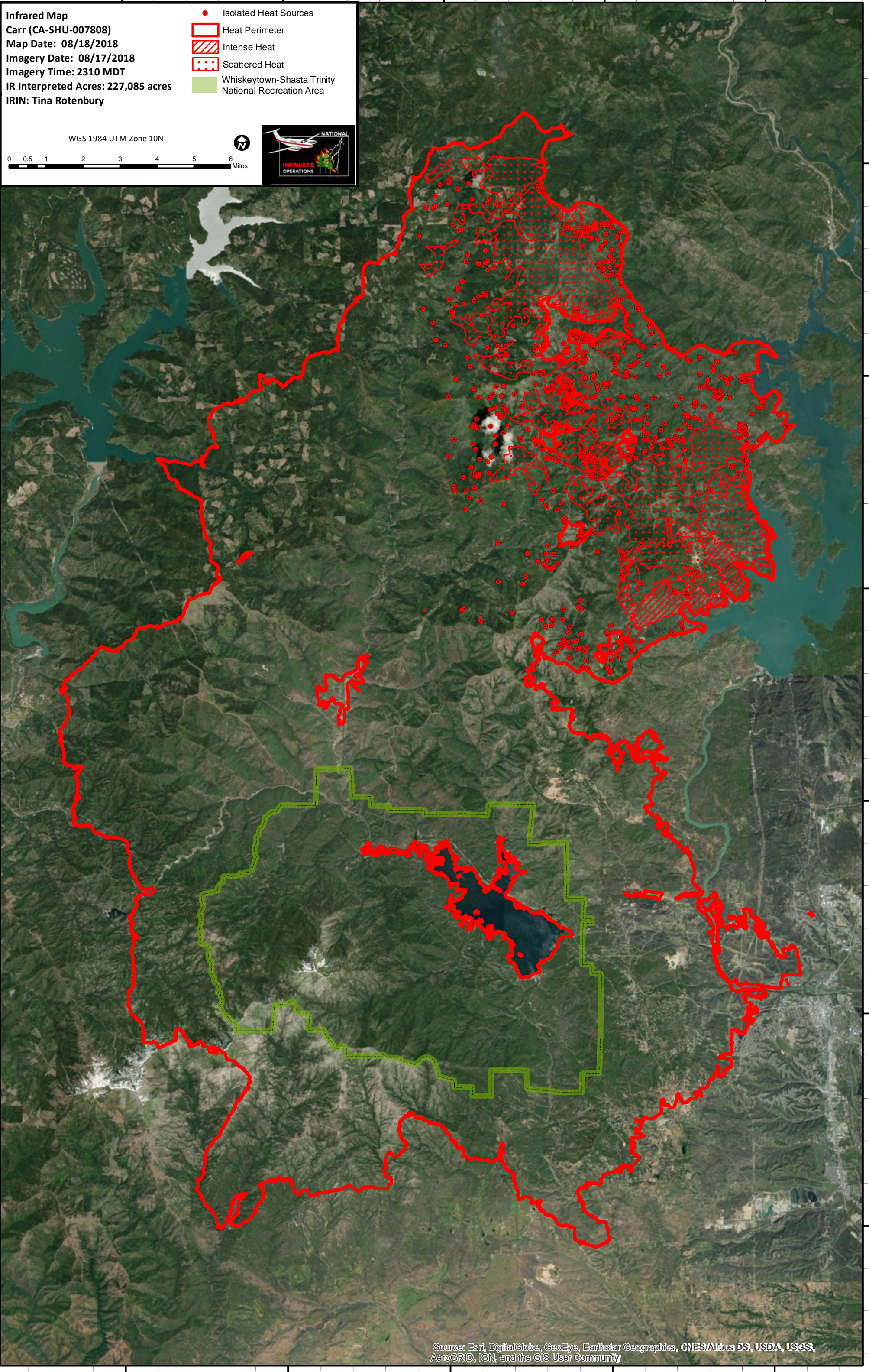


Infrared Map
Carr (CA-SHU-007808)
Map Date: 08/18/2018
Imagery Date: 08/17/2018
Imagery Time: 2310 MDT
IR Interpreted Acres: 227,085 acres
IRIN: Tina Rotenbury

- Isolated Heat Sources
- Heat Perimeter
- Intense Heat
- Scattered Heat
- Whiskeytown-Shasta Trinity National Recreation Area

WGS 1984 UTM Zone 10N

0 0.5 1 2 3 4 5 6 Miles

Source: Esri, DigitalGlobe, GeoEye, Earthstar Geographics, CNES/Airbus DS, USDA, USGS, AeroGRID, IGN, and the GIS User Community