

122°45'W

122°40'W

122°35'W

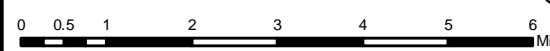
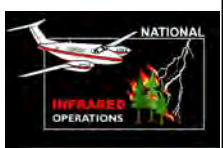
122°30'W

122°25'W

**Infrared Map**  
**Carr (CA-SHU-007808)**  
**Map Date: 08/18/2018**  
**Imagery Date: 08/17/2018**  
**Imagery Time: 2310 MDT**  
**IR Interpreted Acres: 227,085 acres**  
**IRIN: Tina Rotenbury**

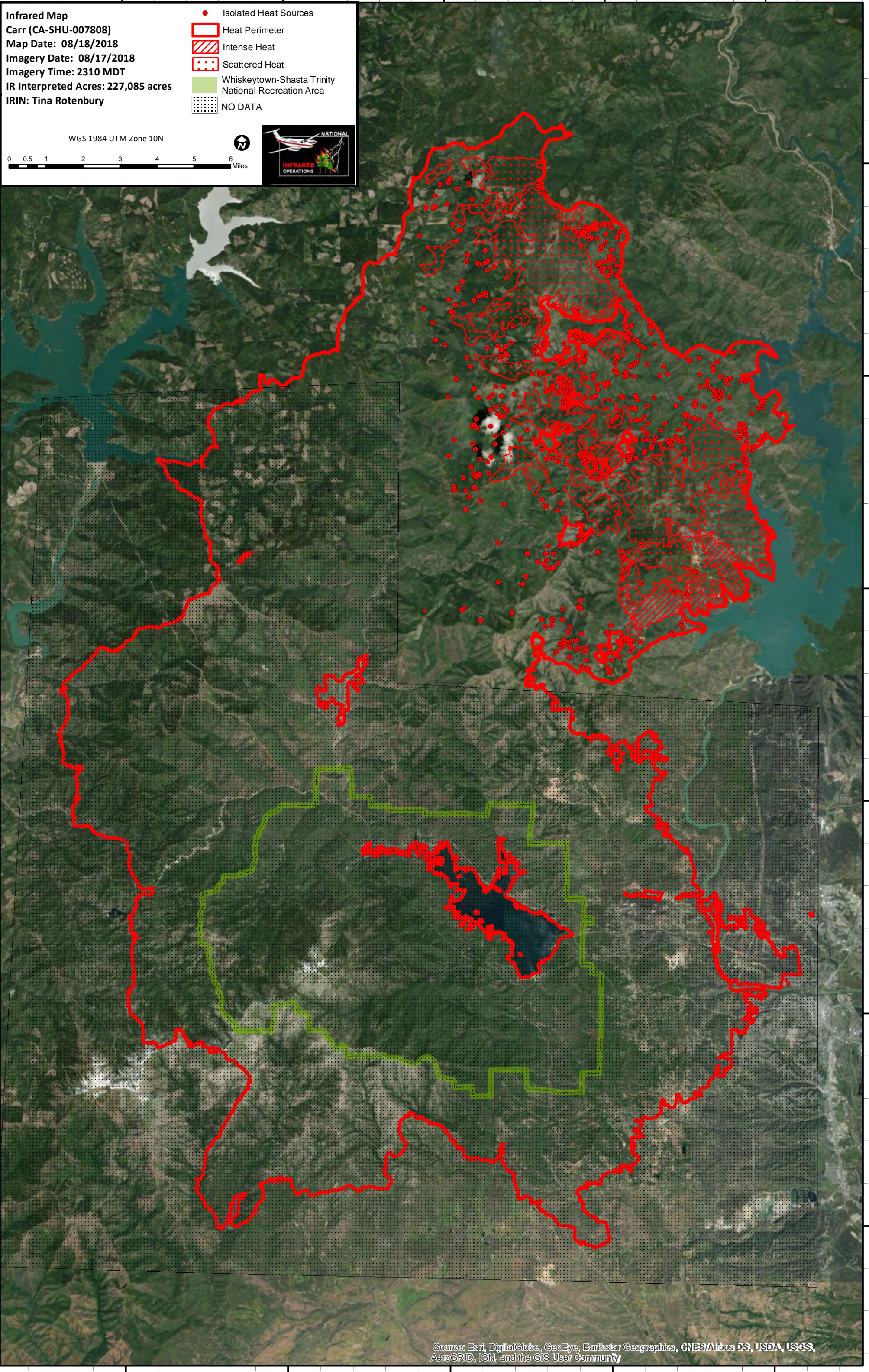
- Isolated Heat Sources
- Heat Perimeter
- Intense Heat
- Scattered Heat
- Whiskeytown-Shasta Trinity National Recreation Area
- NO DATA

WGS 1984 UTM Zone 10N



40°55'N  
40°50'N  
40°45'N  
40°40'N  
40°35'N  
40°30'N

40°55'N  
40°50'N  
40°45'N  
40°40'N  
40°35'N  
40°30'N



Source: Esri, DigitalGlobe, GeoEye, Earthstar Geographics, CNES/Airbus DS, USDA, USGS, AeroGRID, IGN, and the GIS User Community

122°45'W

122°40'W

122°35'W

122°30'W

122°25'W