

INFRARED INTERPRETER'S DAILY LOG

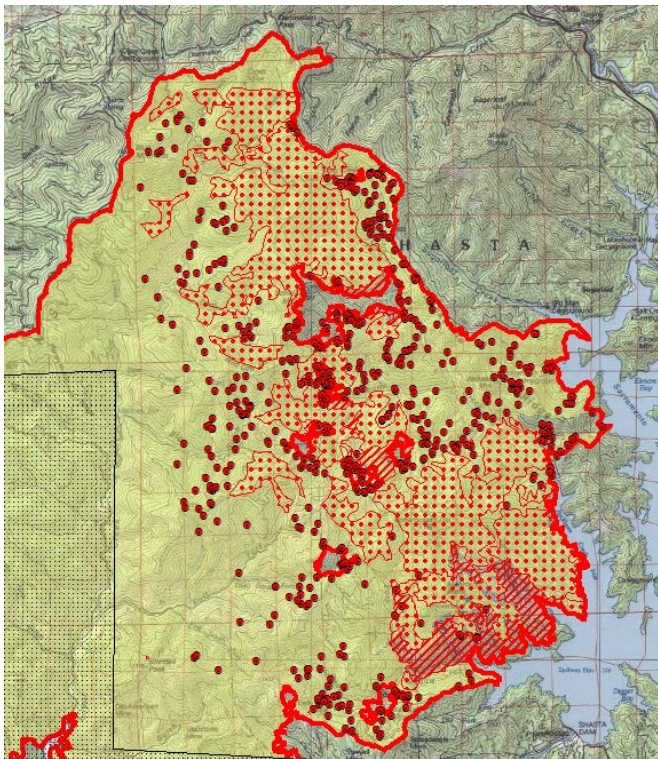
Incident Name: Carr CA-SHU-007808	IR Interpreter(s): Tina Rotenbury trotenbury@fs.fed.us	Local Dispatch Phone: 530-225-2411	Interpreted Size: 227,085 Acres Growth: 3,475 Acres
Flight Time: 2310 (MDT) Flight Date: 08/17/2018	Interpreter(s) location: Russellville, AR Interpreter(s) Phone: 479-967-8681 (landline) 479-886-0878 (cell)	GACC IR Liaison: Kyle Felker GACC IR Liaison Phone: 530-251-6112	National Coordinator: Jan Johnson National Coord. Phone: 208-387-5900 Cell 208-870-5066
Ordered By: Rob DeCamp: SITL 619-507-7405 Rdecamp@ncfire.org	A Number: A-401	Aircraft/Scanner System: N149Z / Phoenix	Pilots/Techs: Netcher/Nelson/Brantlinger
IRIN Comments on imagery: 2 passes, Ortho and Color flown in a north-south direction. Covering the NE corner of fire		Weather at time of flight: Clear	Flight Objective: Identify and map Heat perimeter, Scattered Heat and Isolated Heat Sources.
Date and Time Imagery Received by Interpreter: 08/17/2018 – 2351 (MDT)		Type of media for final product: Shape files, KMZ, PDF, and IRIN Log	
Date and Time Products Delivered to Incident: 08/18/2018 – 0240 (MDT)		Digital files sent to: NIFC FTP @ https://ftp.nifc.gov/public/incident_specific_data/calif_n/!CALFIRE/2018_Incidents/CA-SHU-007808_Carr/IR/20180818/	

Comments /notes on tonight's mission and this interpretation:

I started my interpretation with the 08/17/2018 fire perimeter provided by incident. New growth from previous IR – 3,475 acres. Imagery only covering NE portion of fire where burnout is occurring. No data for the west/south portion of the incident. (NO_Data Shapefile included in zip file)

Yellow is 8/17/2018's IR heat perimeter. Red line is current IR heat perimeter.

North and northeast growth; in DIV M,N,O,P Fire continues to grow to the east and south toward Shasta Lake as burnout continues. There is intense heat as well as scattered heat in this area and isolated heat sources.



INFRARED INTERPRETER'S DAILY LOG

Western Perimeter – NO DATA

East / South Eastern Perimeter: – NO DATA

There is a lot of scattered and isolated heat throughout the interior of the fire.

