

122°45'W

122°40'W

122°35'W

122°30'W

122°25'W

40°55'N

40°50'N

40°45'N

40°40'N

40°35'N

40°30'N

40°55'N

40°50'N

40°45'N

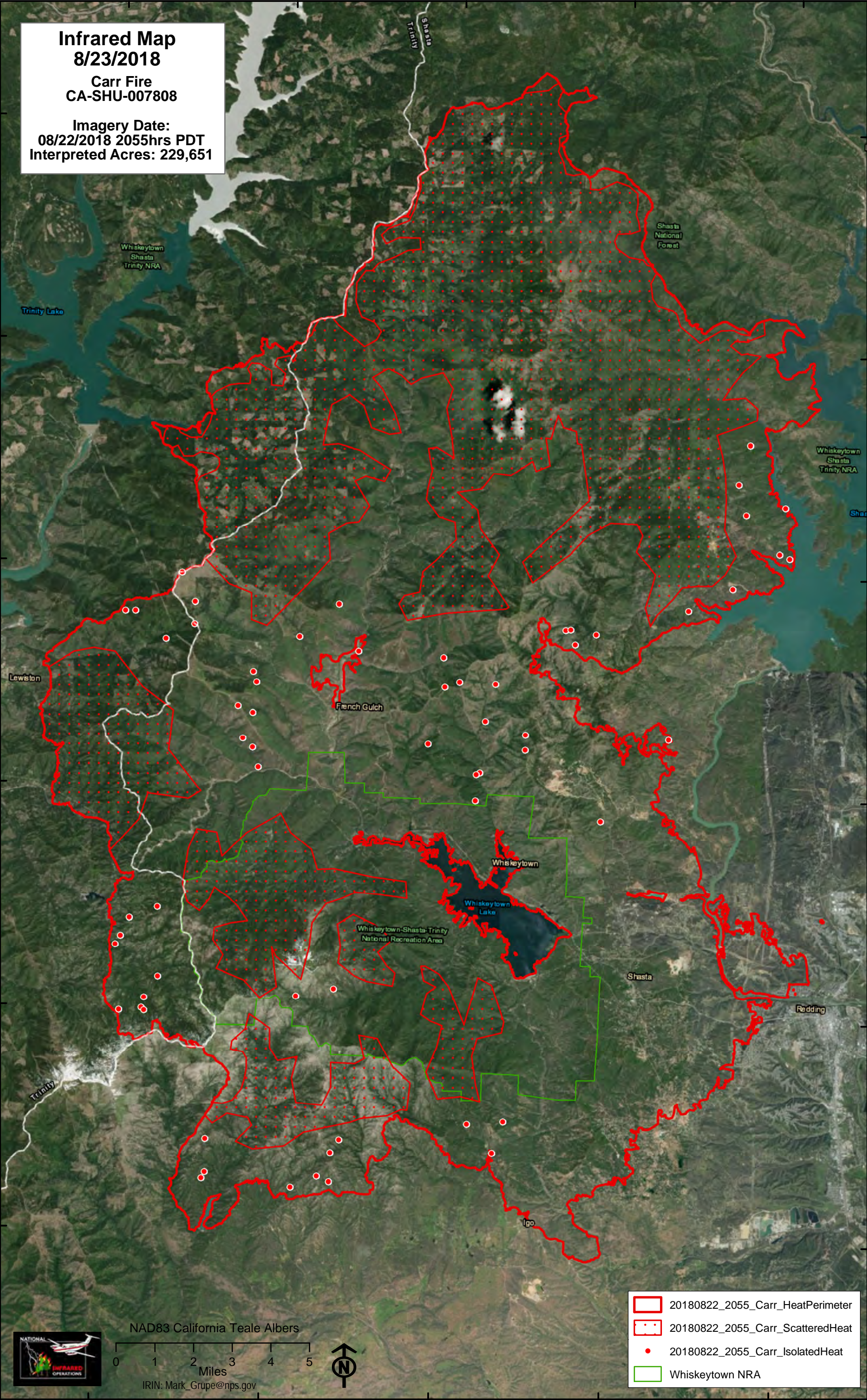
40°40'N

40°35'N

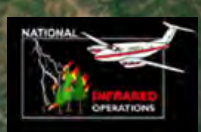
40°30'N

Infrared Map
8/23/2018
Carr Fire
CA-SHU-007808

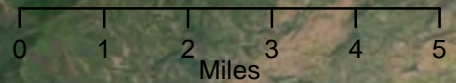
Imagery Date:
08/22/2018 2055hrs PDT
 Interpreted Acres: 229,651



- 20180822_2055_Carr_HeatPerimeter
- 20180822_2055_Carr_ScatteredHeat
- 20180822_2055_Carr_IsolatedHeat
- Whiskeytown NRA



NAD83 California Teale Albers



IRIN: Mark_Grupe@nps.gov

122°45'W

122°40'W

122°35'W

122°30'W

122°25'W