

122°45'W

122°40'W

122°35'W

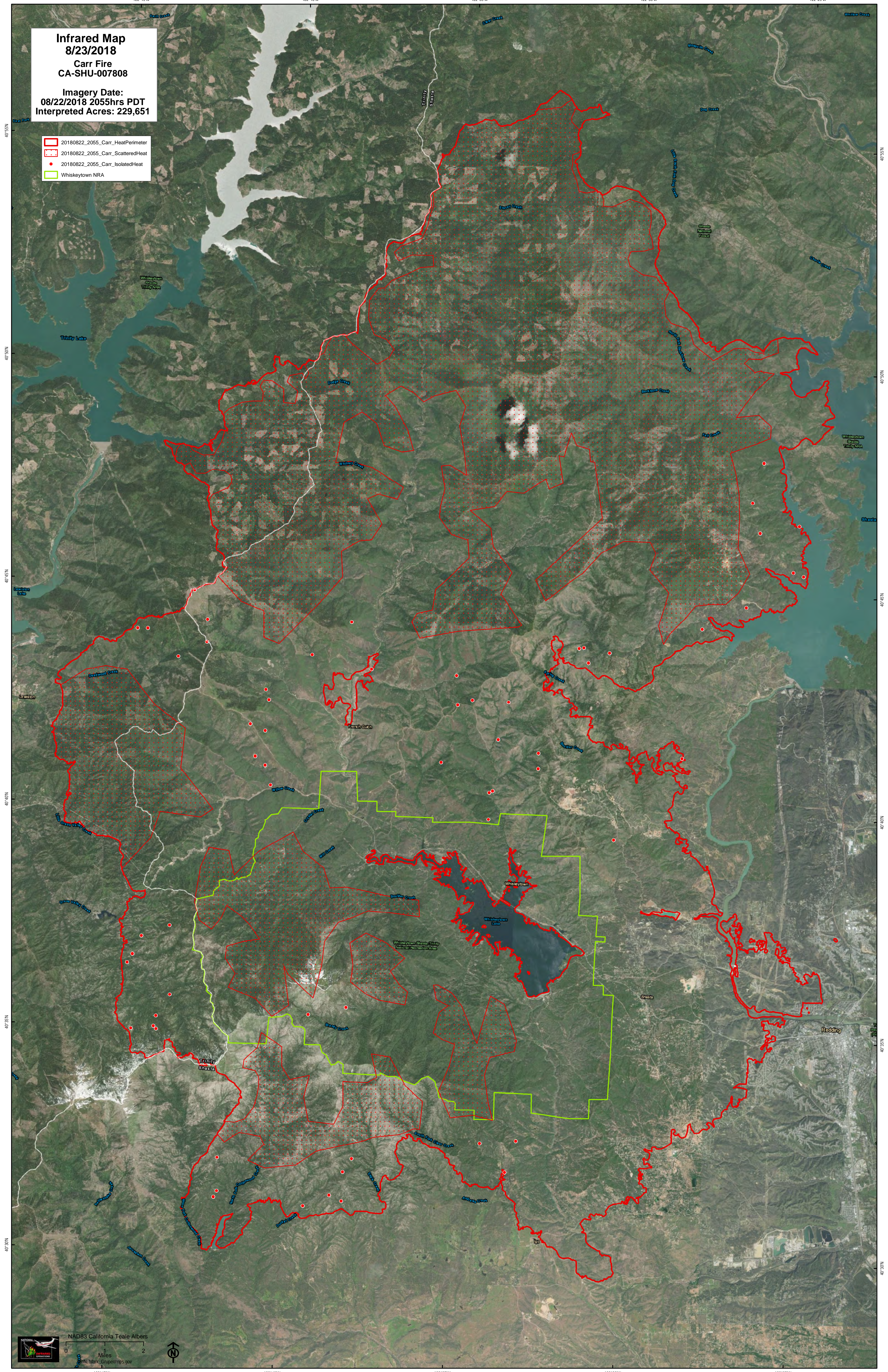
122°30'W

122°25'W

Infrared Map 8/23/2018 Carr Fire CA-SHU-007808

Imagery Date:
08/22/2018 2055hrs PDT
Interpreted Acres: 229,651

- 20180822_2055_Carr_HeatPerimeter
- 20180822_2055_Carr_ScatteredHeat
- 20180822_2055_Carr_IsolatedHeat
- Whiskeytown NRA



40°55'N
40°50'N
40°45'N
40°40'N
40°35'N
40°30'N

40°55'N
40°50'N
40°45'N
40°40'N
40°35'N
40°30'N

122°45'W

122°40'W

122°35'W

122°30'W

122°25'W

NAD83 California Teale Albers

0 1 2 Miles

© 2018 NPS. Mark Grube@nps.gov