

122°45'W

122°40'W

122°35'W

122°30'W

122°25'W

Infrared Map 8/23/2018

Carr Fire CA-SHU-007808

Imagery Date:
08/22/2018 2055hrs PDT
Interpreted Acres: 229,651

40°55'N

40°50'N

40°45'N

40°40'N

40°35'N

40°30'N

40°55'N

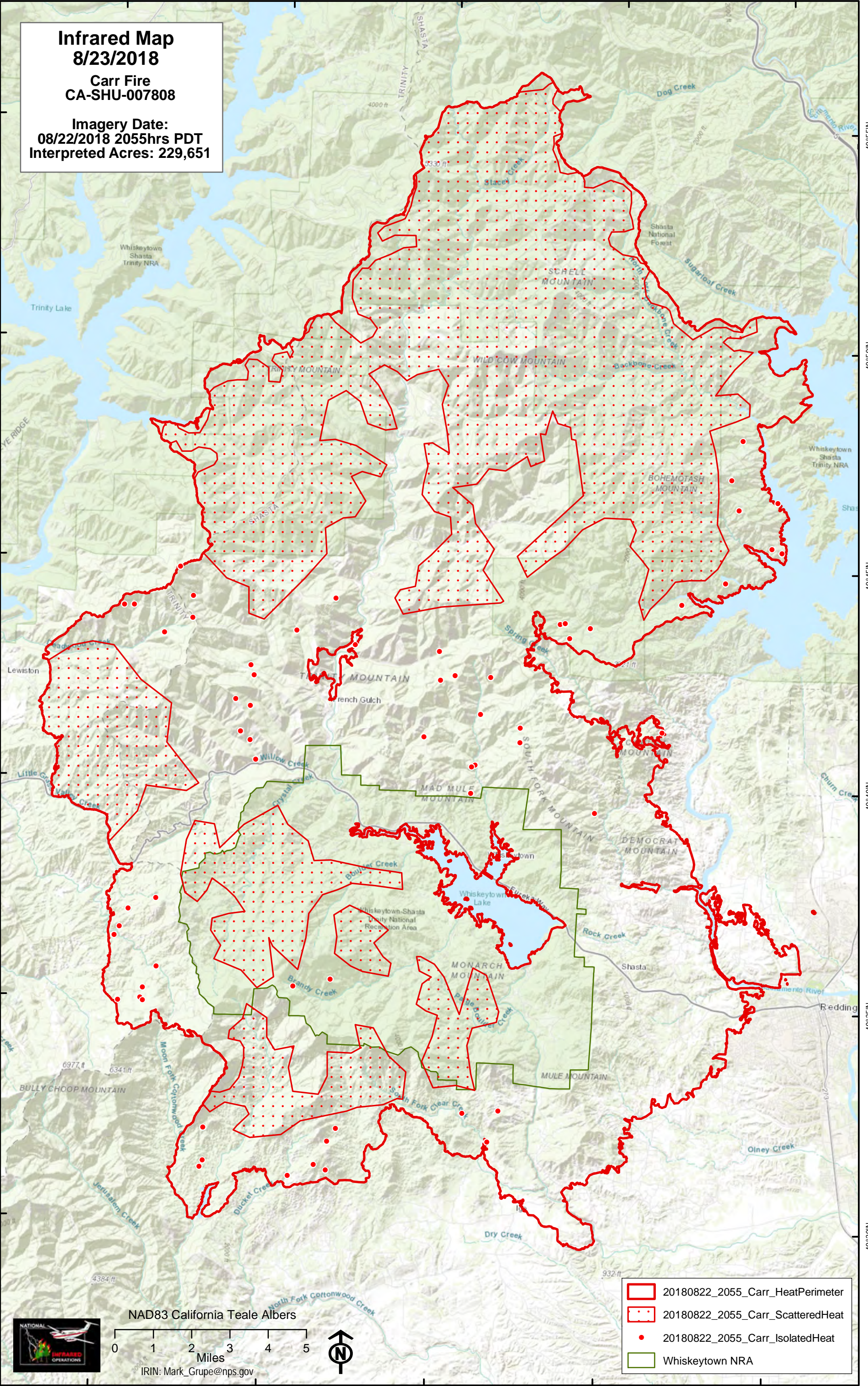
40°50'N

40°45'N

40°40'N

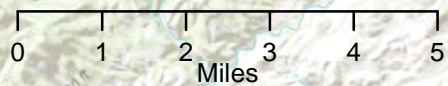
40°35'N

40°30'N

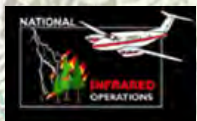


- 20180822_2055_Carr_HeatPerimeter
- 20180822_2055_Carr_ScatteredHeat
- 20180822_2055_Carr_IsolatedHeat
- Whiskeytown NRA

NAD83 California Teale Albers



IRIN: Mark_Grupe@nps.gov



122°45'W

122°40'W

122°35'W

122°30'W

122°25'W