

122°45'W

122°40'W

122°35'W

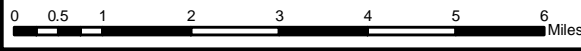
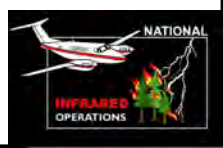
122°30'W

122°25'W

Infrared Map
Carr (CA-SHU-007808)
Map Date: 08/26/2018
Imagery Date: 08/26/2018
Imagery Time: 0102 MDT
IR Interpreted Acres: 229,651 acres
IRIN: Tammy Hocut

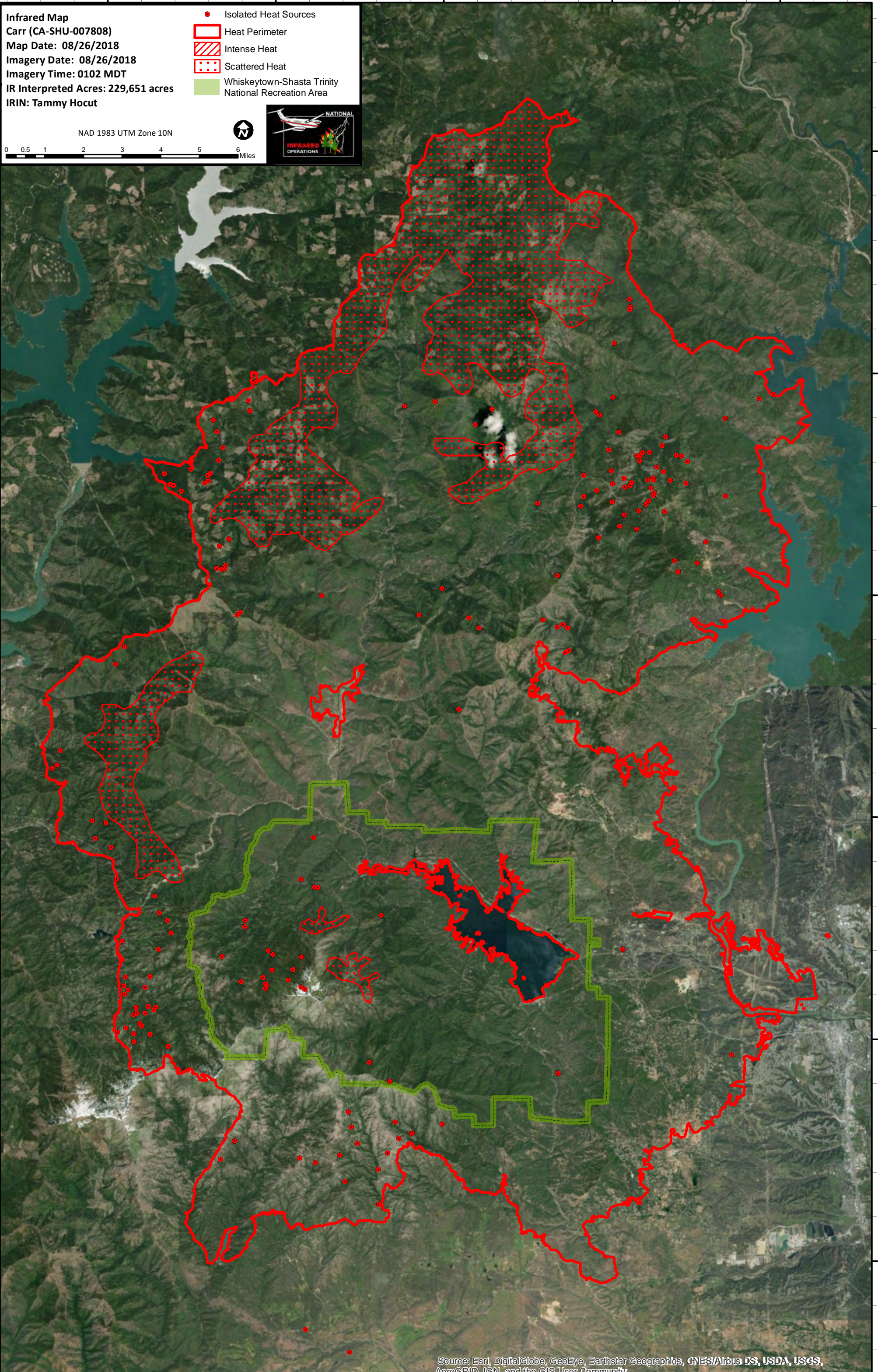
- Isolated Heat Sources
- Heat Perimeter
- Intense Heat
- Scattered Heat
- Whiskeytown-Shasta Trinity National Recreation Area

NAD 1983 UTM Zone 10N



40°55'N
40°50'N
40°45'N
40°40'N
40°35'N
40°30'N

40°55'N
40°50'N
40°45'N
40°40'N
40°35'N
40°30'N



Source: Esri, DigitalGlobe, GeoEye, Earthstar Geographics, CNES/Airbus DS, USDA, USGS, AeroGRID, IGN, and the GIS User Community

122°45'W

122°40'W

122°35'W

122°30'W

122°25'W