

IAP INDEX

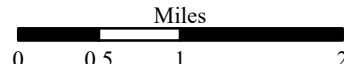
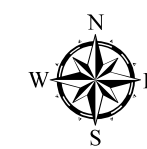
Kincade Incident

CA-LNU-019376

October 25, 2019

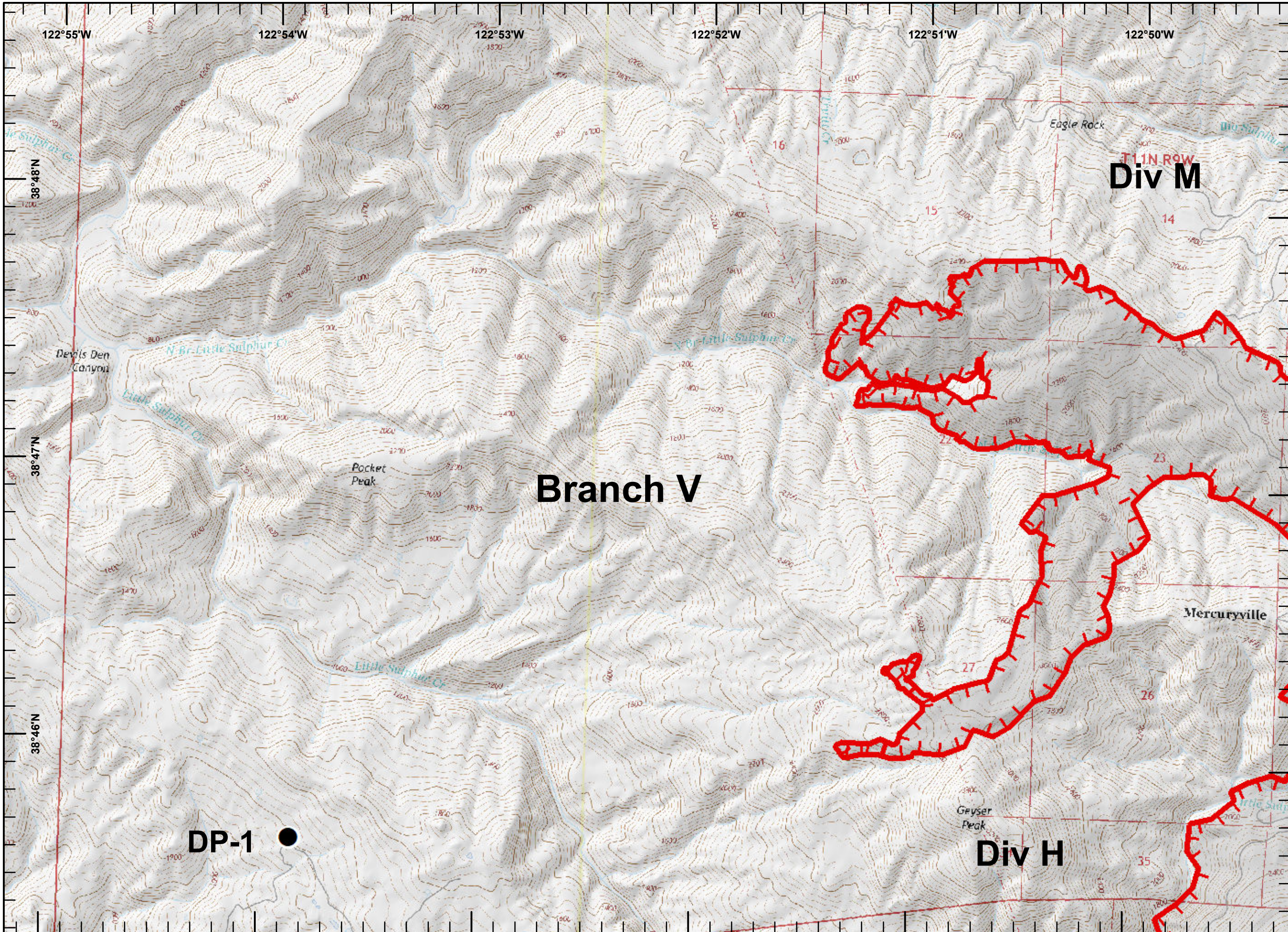
0700 - 0700

NAD 83



1:75,000

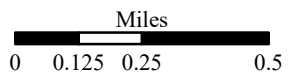
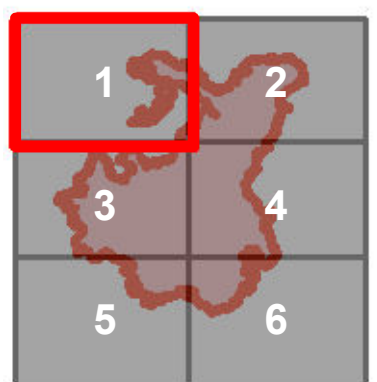
IMT 6 GIS
10/24/2019
23:51 hrs



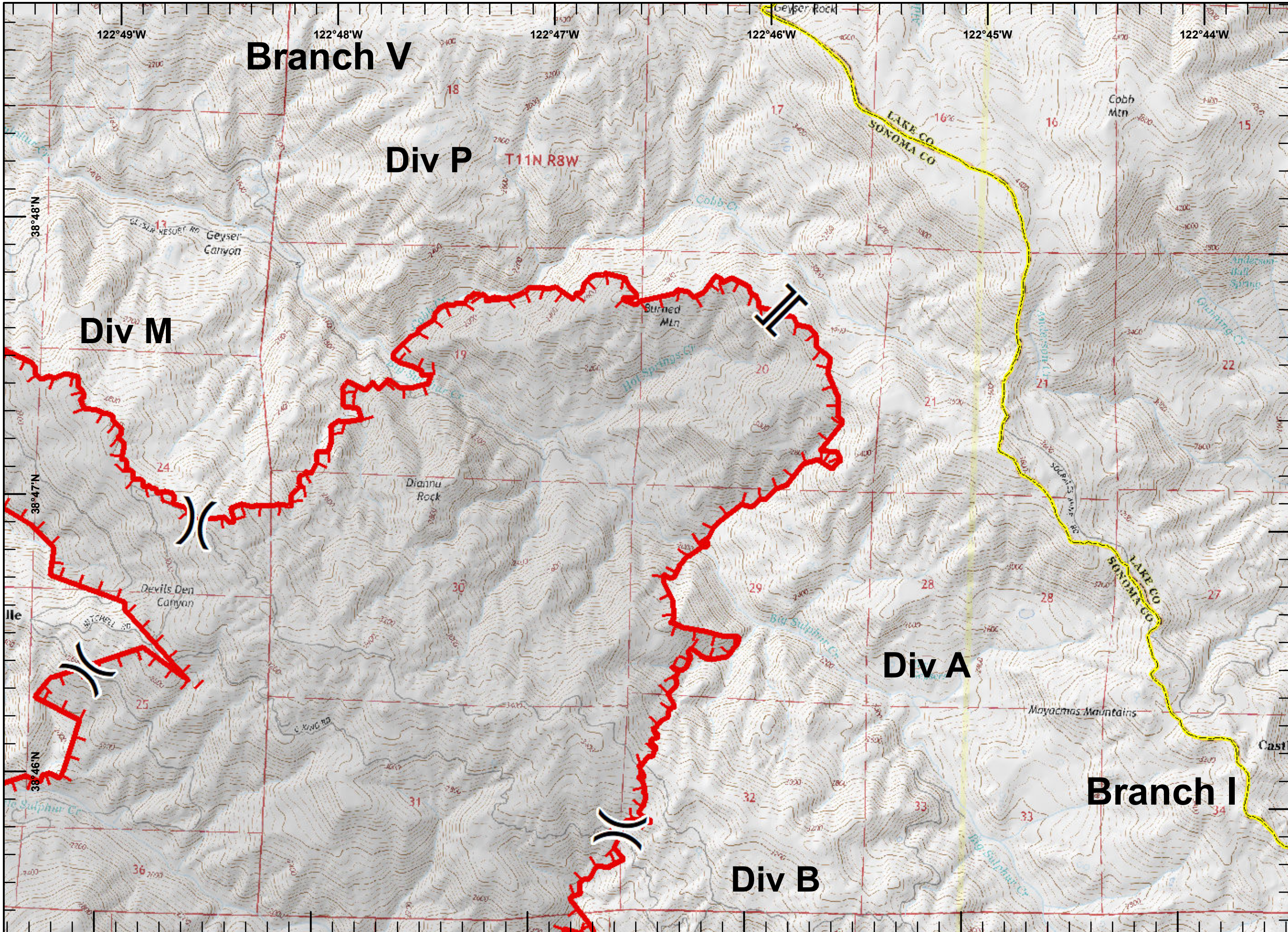
IAP MAP
Kincade Incident

CA-LNU-019376
 October 25, 2019
 0700 - 0700
 NAD 83

- Drop Point
- └─ Uncontrolled Fire Edge

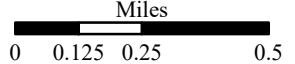
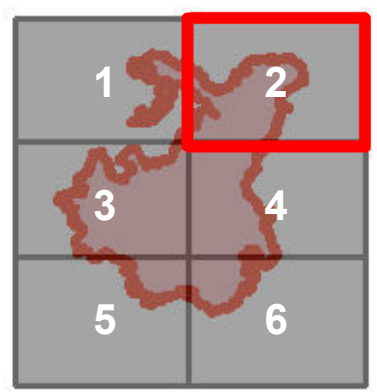
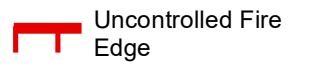


1:24,000
 IMT 6 GIS
 10/24/2019
 23:29 hrs

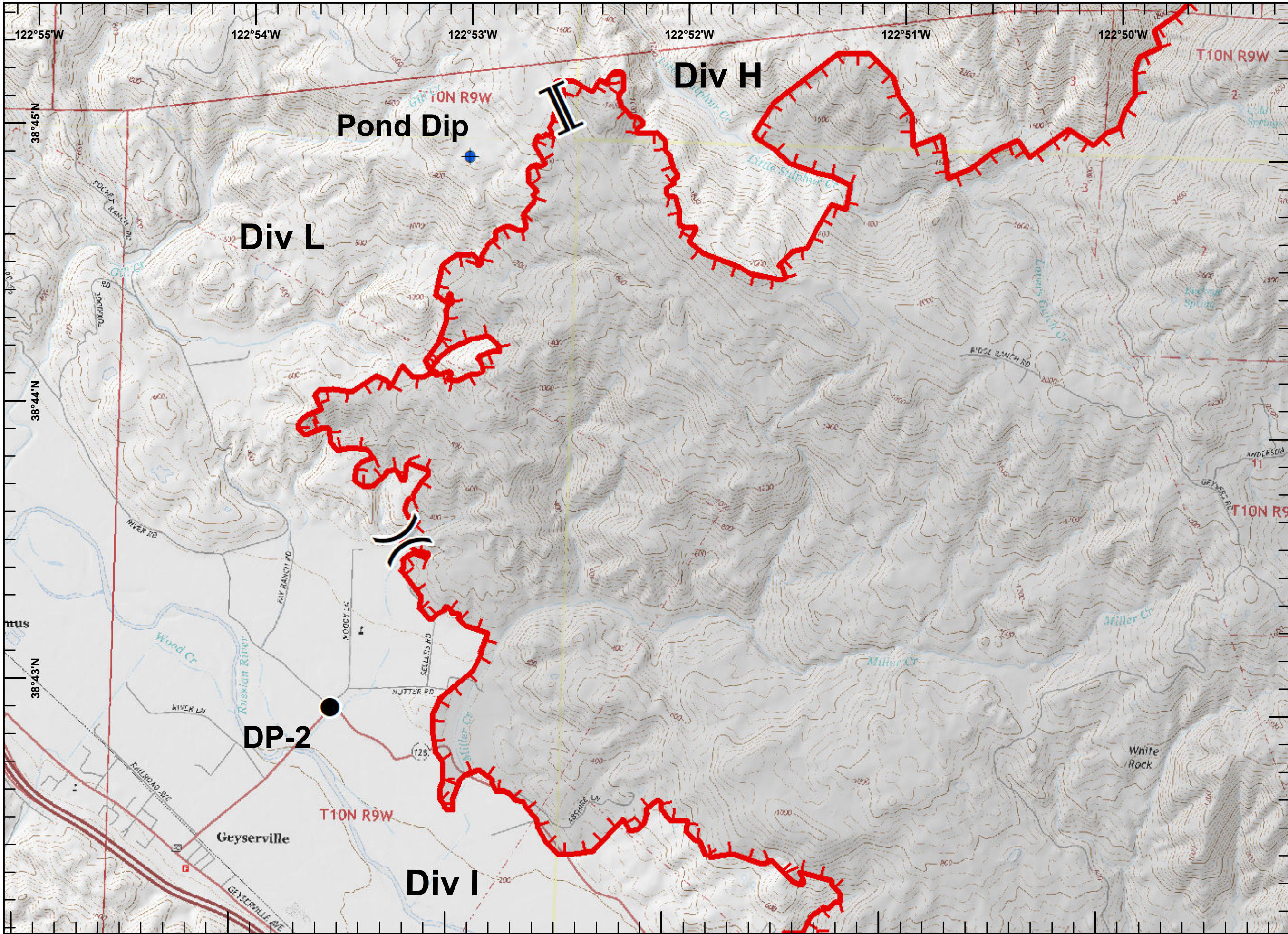


IAP MAP
Kincade Incident

CA-LNU-019376
 October 25, 2019
 0700 - 0700
 NAD 83




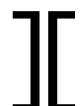



1:24,000
 IMT 6 GIS
 10/24/2019
 23:29 hrs

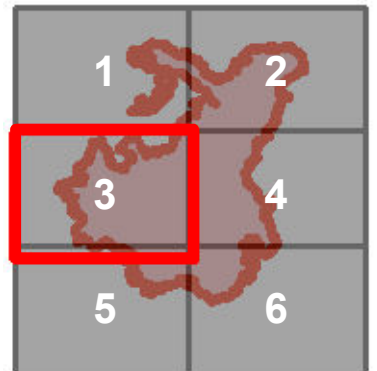


IAP MAP
Kincade Incident

CA-LNU-019376
 October 25, 2019
 0700 - 0700
 NAD 83

-  Dip Site
-  Drop Point
-  Division Break
-  Branch Break

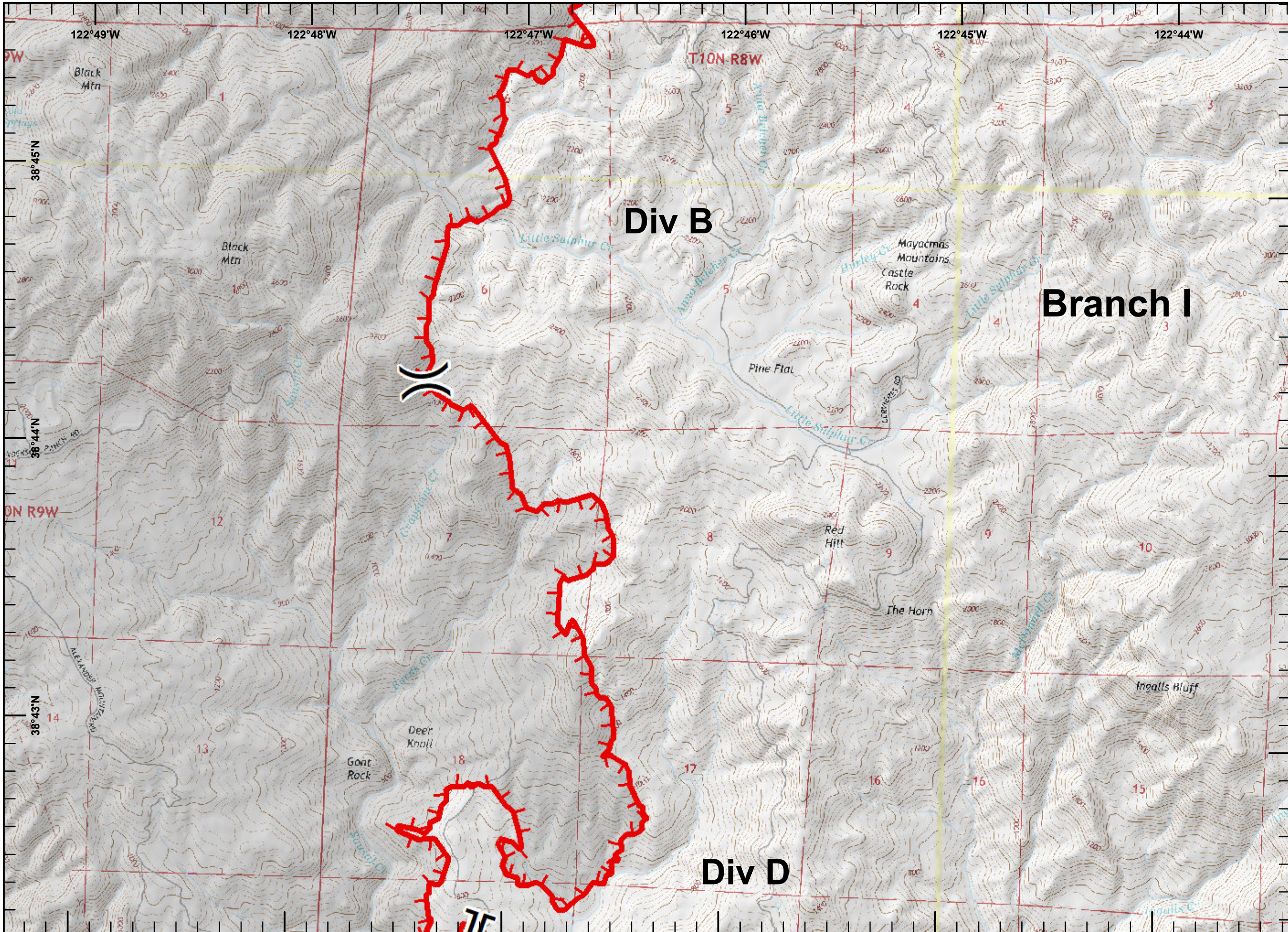
 Uncontrolled Fire Edge



Miles
 0 0.125 0.25 0.5

1:24,000

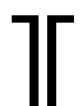
IMT 6 GIS
 10/24/2019
 23:29 hrs




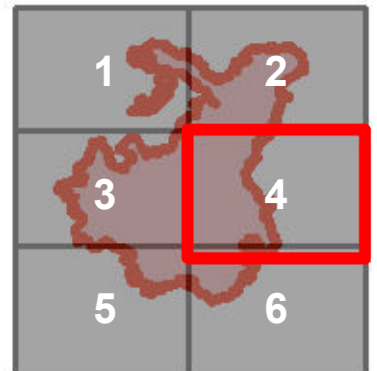
IAP MAP
Kincade Incident

CA-LNU-019376
 October 25, 2019
 0700 - 0700
 NAD 83

 Division Break

 Branch Break

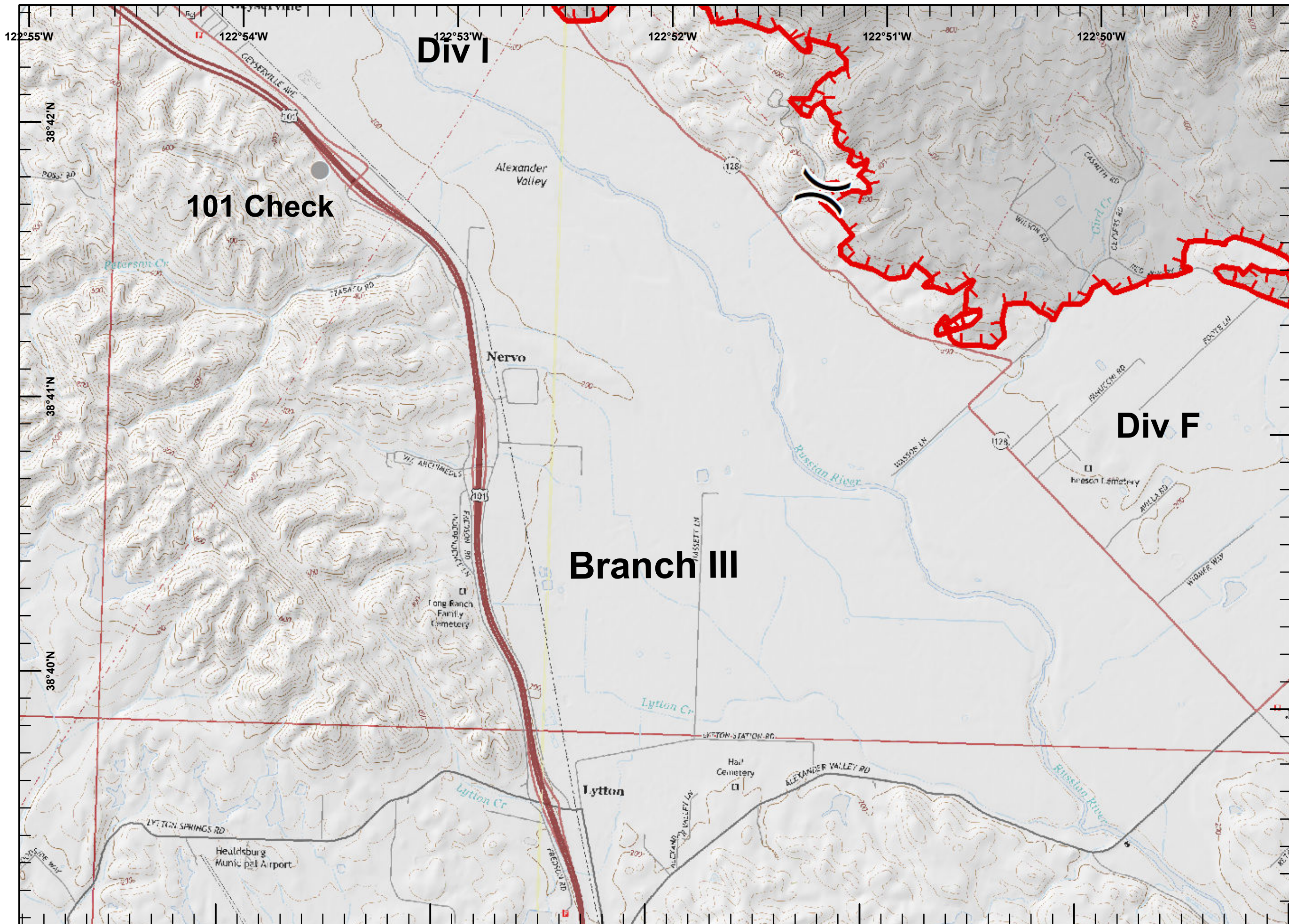
 Uncontrolled Fire Edge



Miles
 0 0.125 0.25 0.5

1:24,000

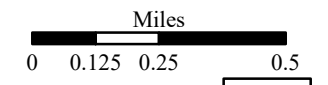
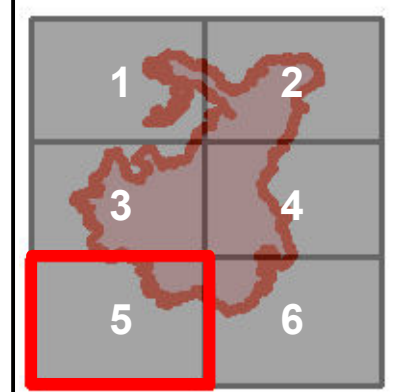
IMT 6 GIS
 10/24/2019
 23:30 hrs



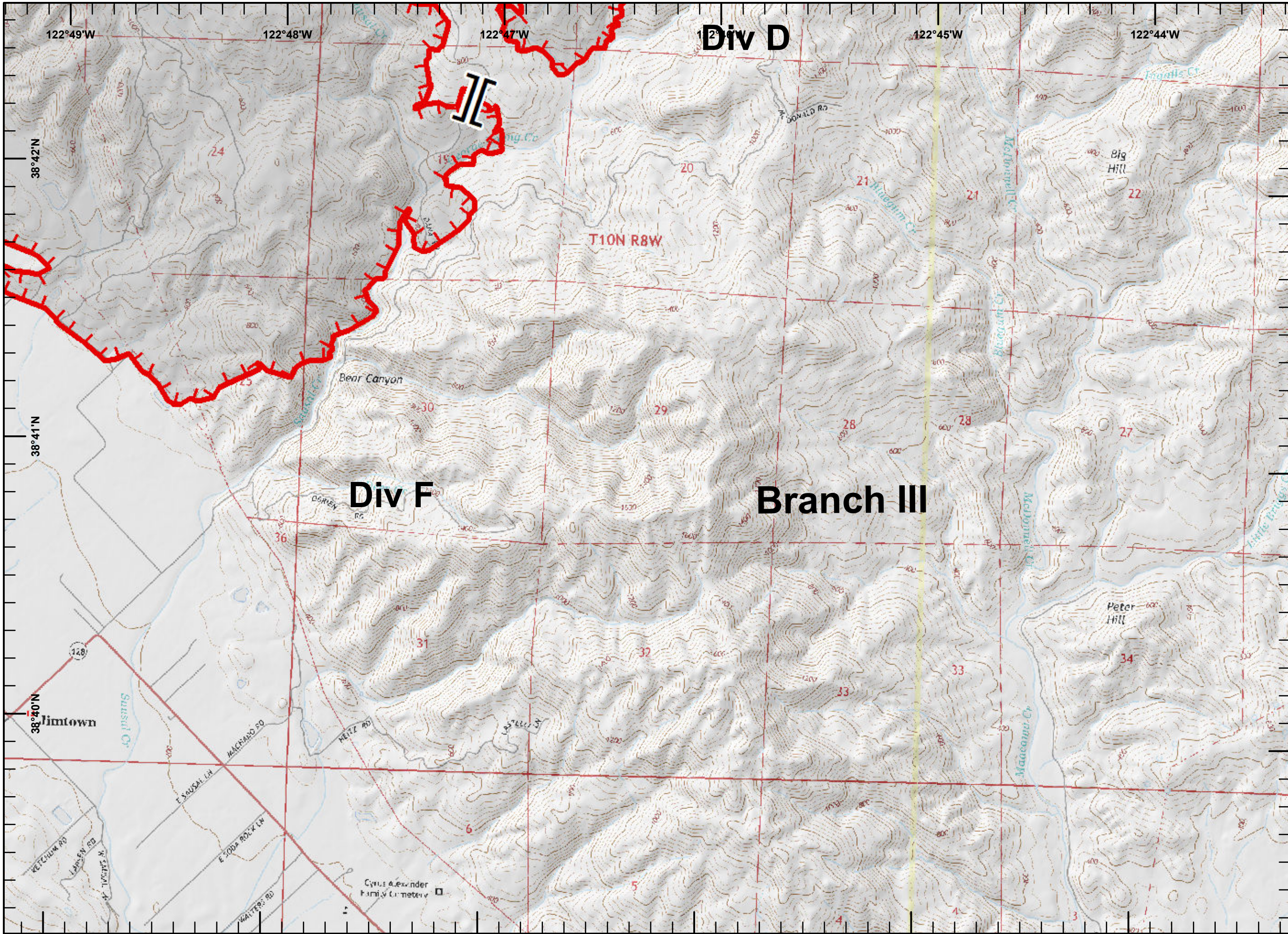
IAP MAP
Kincade Incident

CA-LNU-019376
 October 25, 2019
 0700 - 0700
 NAD 83

- Other
- ⌋ Division Break
- ┌ Uncontrolled Fire Edge



1:24,000
 IMT 6 GIS
 10/24/2019
 23:30 hrs

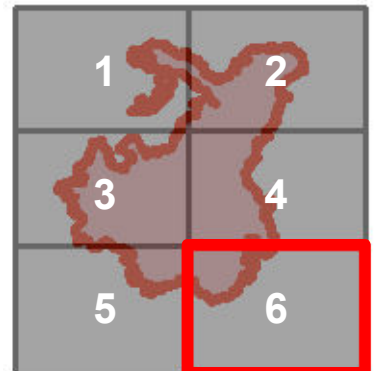


IAP MAP
Kincade Incident

CA-LNU-019376
 October 25, 2019
 0700 - 0700
 NAD 83

Branch Break

Uncontrolled Fire Edge



Miles
 0 0.125 0.25 0.5

1:24,000

IMT 6 GIS
 10/24/2019
 23:30 hrs